



CHALMERS
UNIVERSITY OF TECHNOLOGY

Heterologous Carotenoid-Biosynthetic Enzymes: Functional Complementation and Effects on Carotenoid Profiles in *Escherichia coli*

Downloaded from: <https://research.chalmers.se>, 2026-04-04 20:28 UTC

Citation for the original published paper (version of record):

Song, G., Kim, S., Choi, B. et al (2013). Heterologous Carotenoid-Biosynthetic Enzymes: Functional Complementation and Effects on Carotenoid Profiles in *Escherichia coli*. *Applied and Environmental Microbiology*, 79(2): 610-618. <http://dx.doi.org/10.1128/AEM.02556-12>

N.B. When citing this work, cite the original published paper.

Heterologous Carotenoid-Biosynthetic Enzymes: Functional Complementation and Effects on Carotenoid Profiles in *Escherichia coli*

Gyu Hyeon Song,^a Se Hyeuk Kim,^a Bo Hyun Choi,^a Se Jong Han,^b Pyung Cheon Lee^a

Department of Molecular Science and Technology and Department of Applied Chemistry and Biological Engineering, Ajou University, Woncheon-dong, Yeongtong-gu, Suwon, Republic of Korea^a; Division of Polar life Science, Korea Polar Research Institute, Incheon, Republic of Korea^b

A limited number of carotenoid pathway genes from microbial sources have been studied for analyzing the pathway complementation in the heterologous host *Escherichia coli*. In order to systematically investigate the functionality of carotenoid pathway enzymes in *E. coli*, the pathway genes of carotenogenic microorganisms (*Brevibacterium linens*, *Corynebacterium glutamicum*, *Rhodobacter sphaeroides*, *Rhodobacter capsulatus*, *Rhodospirellula baltica*, and *Pantoea ananatis*) were modified to form synthetic expression modules and then were complemented with *Pantoea agglomerans* pathway enzymes (CrtE, CrtB, CrtI, CrtY, and CrtZ). The carotenogenic pathway enzymes in the synthetic modules showed unusual activities when complemented with *E. coli*. For example, the expression of heterologous CrtEs of *B. linens*, *C. glutamicum*, and *R. baltica* influenced *P. agglomerans* CrtI to convert its substrate phytoene into a rare product—3,4,3',4'-tetrahydrolycopene—along with lycopene, which was an expected product, indicating that CrtE, the first enzyme in the carotenoid biosynthesis pathway, can influence carotenoid profiles. In addition, CrtIs of *R. sphaeroides* and *R. capsulatus* converted phytoene into an unusual lycopene as well as into neurosporene. Thus, this study shows that the functional complementation of pathway enzymes from different sources is a useful methodology for diversifying biosynthesis as nature does.

Carotenoids, which are isoprenoids produced by many microorganisms and plants, belong to a class of pigment chemicals found in nature. These structurally diverse pigments have different biological functions such as coloration, photo protection, light harvesting, and serving as precursors for many hormones (1). Carotenoids are commercially used as food colorants and animal feed supplements, and more recently, they are being used as nutraceuticals and cosmetic and pharmaceutical compounds (2). The increasing industrial importance of carotenoids has led to renewed efforts in developing bioprocesses for large-scale production of a range of carotenoids, including lycopene, β -carotene, and other more structurally diverse carotenoids (3–6).

In addition to *in vitro* evolution (6, 27), combinatorial biosynthesis with carotenoid-modifying enzymes in a heterologous host has often been used to generate structurally diverse carotenoids (7). This combinatorial approach basically relies on the functional coordination/complementation of pathway enzymes from different sources in a heterologous host (2, 8, 9). Among the carotenogenic microorganisms (2, 8), *Pantoea* (formerly *Enterobacter*) is a well-known carotenogenic bacterium that produces zeaxanthin and its derivatives (8). The carotenogenic pathway consists of 6 enzymes: geranylgeranyl diphosphate (GGPP) synthase CrtE, phytoene synthase CrtB, phytoene desaturase CrtI, lycopene cyclase CrtY, β -carotene hydroxylase CrtZ, and the zeaxanthin glucosyltransferase CrtX (Fig. 1). The carotenoid biosynthetic pathways of *Pantoea* have been successfully used as basic pathways for many carotenoid studies (11–13). The pathway enzymes from different sources have occasionally shown unusual activities or substrate affinities in a heterologous host (14–16). Carotenogenic enzymes, especially carotenoid-modifying enzymes, tend to be promiscuous in their substrate specificity (14) and show unexpected/hidden activities (3, 16) when expressed in heterologous host microorganisms. Therefore, the activities of carotenoid-

modifying enzymes (e.g., spheroidene monooxygenase CrtA and CrtZ) or important pathway branch point enzymes (e.g., CrtY) in heterologous hosts have been the focus of study. In contrast, little attention has been paid to carotenoid backbone-generating enzymes such as CrtE, CrtB, and CrtI.

In this study, in order to systematically investigate the activity and functionality of carotenoid-backbone-generating pathway enzymes, as well as important pathway branch point enzymes, the pathway enzymes of carotenogenic microorganisms (*Brevibacterium linens*, *Corynebacterium glutamicum*, *Rhodobacter sphaeroides*, *Rhodobacter capsulatus*, *Rhodospirellula baltica*, and *Pantoea ananatis*) were complemented with the *Pantoea agglomerans* pathway enzymes in synthetic expression modules in *Escherichia coli*. In particular, we showed that CrtE, the first upstream enzyme in the carotenoid biosynthesis pathway, can influence carotenoid profiles in *E. coli*.

MATERIALS AND METHODS

Bacterial strains, plasmids, and growth conditions. The bacterial strains and plasmids used in this study are listed in Table 1. *E. coli* was grown in Luria-Bertani (LB) medium (28) at 37°C for gene cloning and in Terrific broth (TB) medium (28) at 30°C for carotenoid production on a rotary

Received 18 August 2012 Accepted 3 November 2012

Published ahead of print 9 November 2012

Address correspondence to Pyung Cheon Lee, pcheon@ajou.ac.kr.

G.H.S. and S.H.K. contributed equally to this article.

Supplemental material for this article may be found at <http://dx.doi.org/10.1128/AEM.02556-12>.

Copyright © 2013, American Society for Microbiology. All Rights Reserved.
doi:10.1128/AEM.02556-12

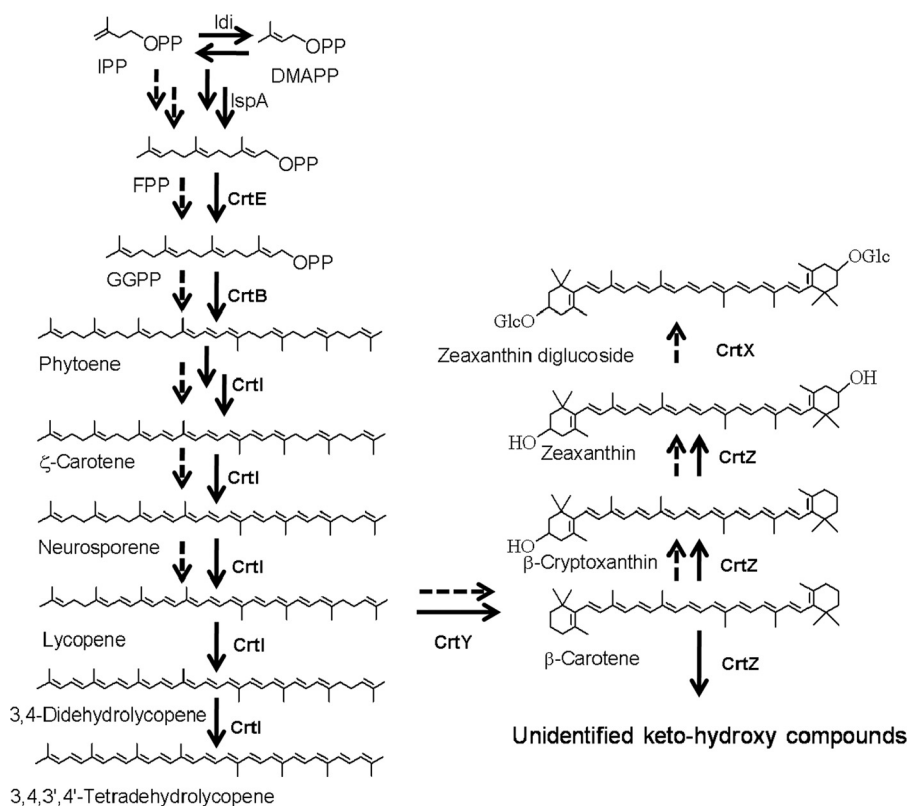


FIG 1 Carotenoid pathways of *Pantoea agglomerans* wild-type and reconstructed pathways in *E. coli*. Carotenogenic enzymes of *P. agglomerans* are indicated by bold letters. Shown are **Idi** (IPP isomerase), **IspA** (FPP synthase), **CrtE** (GGPP synthase), **CrtB** (phytoene synthase), **CrtI** (phytoene desaturase), **CrtI** (lycopene cyclase), **CrtZ** (β -carotene hydroxylase), and **CrtX** (zeaxanthin glucosyltransferase). Solid arrows refer to reconstructed carotenoid pathways in *E. coli*, and dotted arrows refer to wild-type carotenoid pathways in *P. agglomerans*.

shaker at 250 rpm. Chloramphenicol (50 μ g/ml), ampicillin (100 μ g/ml), and/or kanamycin (30 μ g/ml) (Sigma) were added as required. *Pantoea agglomerans* KCTC 2479 was grown in LB medium at 37°C.

Recombinant DNA techniques. Restriction enzymes, polymerase, and DNA ligase were purchased from New England BioLabs, TaKaRa, or Stratagene. Genomic DNA of *P. agglomerans* was isolated using a genomic DNA (gDNA) extraction kit (GeneAll, South Korea). Plasmid DNA was prepared with the DNA-spin Plasmid DNA Purification kit (Intron, South Korea). PCR was carried out using a DNA Engine Thermal Cycler (Bio-Rad) with Vent DNA polymerase or PfuUltra II Fusion HS DNA polymerase, according to the manufacturer's instructions.

Gene cloning. *P. agglomerans* carotenoid pathway genes *crtE*, *crtB*, *crtI*, *crtY*, and *crtZ* were amplified from gDNA of *P. agglomerans* KCTC 2479 by PCR using primers that were designed according to the corresponding gene sequences from *P. agglomerans* pv. *milletiae* (AB076662) and *Pantoea* sp. C1B1Y (AY876938) (see Table S1 in the supplemental material). The PCR products were then cloned into pUCM (15), which has been modified to facilitate the constitutive expression of a cloned gene, resulting in pUCM-X_{PAG} (where X is a pathway gene) (Table 1).

Functional assembly of carotenoid biosynthetic genes. To assemble the carotenogenic pathway genes of *P. agglomerans*, genes together with a modified constitutive *lac*-promoter and a ribosome binding site were sequentially subcloned from pUCM-X (where X is a pathway gene) into pACYC184 vector as described previously (15). Briefly, a *CrtE* expression module was subcloned from pUCM-E_{PAG} into the HindIII site of pACYC184, resulting in pACM-E_{PAG}; a *CrtB* expression module was subcloned from pUCM-B_{PAG} into the SalI site of pACYC184, resulting in pACM-B_{PAG}; and a *CrtI* expression module was subcloned from pUCM-I_{PAG} into the BamHI site of pACYC184, resulting in pACM-

I_{PAG} (Table 1). Next, the *CrtI* expression module was subcloned from pUCM-I_{PAG} into pACM-E_{PAG} to generate the plasmid pACM-E_{PAG}-I_{PAG}, which expresses *CrtE* and *CrtI* together. Similarly, the *CrtE* expression module from pUCM-E_{PAG} and the *CrtB* expression module from pUCM-B_{PAG} were subcloned into pACM-B_{PAG} and pACM-I_{PAG}, respectively, to generate 2 expression plasmids: pACM-E_{PAG}-B_{PAG}, expressing *CrtE* and *CrtB* together, and pACM-B_{PAG}-I_{PAG}, expressing *CrtB* and *CrtI* together. The functionality of the resulting synthetic modules expressing 2 pathway enzymes was confirmed by complementation with a third gene: for example, complementing *CrtB* on pUCM-B_{PAG} with a synthetic module of *CrtE* and *CrtI* on pACM-E_{PAG}-I_{PAG}. Finally, the lycopene expression module was constructed by assembling the *CrtB* expression module into pACM-E_{PAG}-I_{PAG}, resulting in the plasmid pACM-E_{PAG}-B_{PAG}-I_{PAG}. Similarly, to reconstruct the β -carotene biosynthetic pathway, the *CrtY* expression module was subcloned from pUCM-Y_{PAG} into the XmnI site of pACM-E_{PAG}-B_{PAG}-I_{PAG}, resulting in pACM-E_{PAG}-B_{PAG}-I_{PAG}-Y_{PAG}. A zeaxanthin expression module was constructed by assembling a *CrtZ* expression module into pACM-E_{PAG}-B_{PAG}-I_{PAG}-Y_{PAG}, resulting in pACM-E_{PAG}-B_{PAG}-I_{PAG}-Y_{PAG}-Z_{PAG} (Table 1).

Phylogenetic tree. The amino acid sequences of carotenoid genes were aligned using the BioEdit program (20). Phylogenetic and molecular evolutionary analyses were conducted using MEGA version 4 (21).

Extraction of carotenoids from recombinant *E. coli*. For carotenoid production, recombinant *E. coli* cells harboring carotenogenic plasmids were cultivated in 100 ml of TB medium supplemented with the appropriate selective antibiotics for 48 h at 30°C and 250 rpm. The cells were pelleted by centrifugation (4°C, 4,000 rpm) and extracted repeatedly with a total volume of 15 ml acetone until all visible pigments were extracted. After centrifugation (4°C, 4,000 rpm), the colored supernatants were

TABLE 1 Strains and plasmids used in this study

Strains and plasmids	Relevant properties	Source or reference
Strains		
<i>Pantoea agglomerans</i>	C ₄₀ carotenoid pathway	KCTC 2479
<i>Pantoea ananatis</i>	C ₄₀ carotenoid pathway	DSM 30080
<i>Brevibacterium linens</i>	C ₄₀ carotenoid pathway	DSM 20426
<i>Rhodobacter sphaeroides</i>	C ₄₀ carotenoid pathway	KCTC 12085
<i>Rhodobacter capsulatus</i>	C ₄₀ carotenoid pathway	KCTC 2583
<i>Rhodopirellula baltica</i>	C ₄₀ carotenoid pathway	DSM 10527
<i>Corynebacterium glutamicum</i>	C ₅₀ carotenoid pathway	KCTC 1445
<i>E. coli</i> SURE	<i>endA1 glnV44 thi-1 gyrA96 relA1 lac recB recJ sbcC umuC::Tn5 uvrC e14-Δ(mcrCB-hsdSMR-mrr)171 F'[proAB⁺ lacI^q lacZΔM15 Tn10]</i>	Stratagene
<i>E. coli</i> XL1-Blue	<i>endA1 gyrA96(Nal^r) thi-1 recA1 relA1 lac glnV44 F'[:Tn10 proAB⁺ lacI^q Δ(lacZ)M15] hsdR17(r_K⁻ m_K⁺)</i>	Stratagene
Plasmids		
pUC19	Cloning vector, <i>lac</i> promoter, Ap	NEB
pUCM	Cloning vector modified from pUC19; constitutive <i>lac</i> promoter, Ap	15
pACYC184	Expression vector that is compatible with pMB1 or ColE1-related plasmids	NEB
pBBR1MCS-2	Cloning vector, Km	17
pUCM-E _{PAG}	Constitutively expressed <i>crtE</i> gene from <i>P. agglomerans</i>	This study
pUCM-B _{PAG}	Constitutively expressed <i>crtB</i> gene from <i>P. agglomerans</i>	This study
pUCM-I _{PAG}	Constitutively expressed <i>crtI</i> gene from <i>P. agglomerans</i>	This study
pUCM-Y _{PAG}	Constitutively expressed <i>crtY</i> gene from <i>P. agglomerans</i>	This study
pUCM-Z _{PAG}	Constitutively expressed <i>crtZ</i> gene from <i>P. agglomerans</i>	This study
pACM-E _{PAG}	Constitutively expressed <i>crtE</i> gene from <i>P. agglomerans</i>	This study
pACM-B _{PAG}	Constitutively expressed <i>crtB</i> gene from <i>P. agglomerans</i>	This study
pACM-I _{PAG}	Constitutively expressed <i>crtI</i> genes from <i>P. agglomerans</i>	This study
pACM-E _{PAG} -B _{PAG}	Constitutively expressed <i>crtE</i> and <i>crtB</i> genes from <i>P. agglomerans</i>	This study
pACM-E _{PAG} -I _{PAG}	Constitutively expressed <i>crtE</i> and <i>crtI</i> genes from <i>P. agglomerans</i>	This study
pACM-B _{PAG} -I _{PAG}	Constitutively expressed <i>crtB</i> and <i>crtI</i> genes from <i>P. agglomerans</i>	This study
pACM-E _{PAG} -B _{PAG} -I _{PAG}	Constitutively expressed <i>crtE</i> , <i>crtB</i> , and <i>crtI</i> genes from <i>P. agglomerans</i> to produce lycopene	This study
pACM-E _{PAG} -B _{PAG} -I _{PAG} -Y _{PAG}	Constitutively expressed <i>crtE</i> , <i>crtB</i> , <i>crtI</i> , and <i>crtY</i> genes from <i>P. agglomerans</i> to produce β-carotene	This study
pACM-E _{PAG} -B _{PAG} -I _{PAG} -Y _{PAG} -Z _{PAG}	Constitutively expressed <i>crtE</i> , <i>crtB</i> , <i>crtI</i> , <i>crtY</i> , and <i>crtZ</i> genes from <i>P. agglomerans</i> to produce zeaxanthin	This study
pUCM-E _{BL}	Constitutively expressed <i>crtE</i> gene from <i>B. linens</i>	15
pUCM-E _{RB}	Constitutively expressed <i>crtE</i> gene from <i>R. baltica</i>	Unpublished
pUCM-E _{GG}	Constitutively expressed <i>crtE</i> gene from <i>C. glutamicum</i>	Unpublished
pUCM-E _{RS}	Constitutively expressed <i>crtE</i> gene from <i>R. sphaeroides</i>	Unpublished
pUCM-E _{RC}	Constitutively expressed <i>crtE</i> gene from <i>R. capsulatus</i>	Unpublished
pUCM-B _{BL}	Constitutively expressed <i>crtB</i> gene from <i>B. linens</i>	15
pUCM-B _{RB}	Constitutively expressed <i>crtB</i> gene from <i>R. baltica</i>	Unpublished
pUCM-B _{1CG}	Constitutively expressed <i>crtB1</i> gene from <i>C. glutamicum</i>	Unpublished
pUCM-B _{RS}	Constitutively expressed <i>crtB</i> gene from <i>R. sphaeroides</i>	Unpublished
pUCM-B _{RC}	Constitutively expressed <i>crtB</i> gene from <i>R. capsulatus</i>	Unpublished
pUCM-I _{BL}	Constitutively expressed <i>crtI</i> gene from <i>B. linens</i>	15
pUCM-I _{2CG}	Constitutively expressed <i>crtI2</i> gene from <i>C. glutamicum</i>	Unpublished
pUCM-I _{RS}	Constitutively expressed <i>crtI</i> gene from <i>R. sphaeroides</i>	Unpublished
pUCM-I _{RC}	Constitutively expressed <i>crtI</i> gene from <i>R. capsulatus</i>	Unpublished
pUCM-I _{RB}	Constitutively expressed <i>crtI</i> gene from <i>R. baltica</i>	Unpublished
pUCM-Y _{PAN}	Constitutively expressed <i>crtY</i> gene from <i>P. ananatis</i>	18
pUCM-YcYd _{BL}	Constitutively expressed <i>crtYcYd</i> gene from <i>B. linens</i>	15
pUCM-YeYf _{CG}	Constitutively expressed <i>crtYeYf</i> gene from <i>C. glutamicum</i>	Unpublished
pUCM-Z _{PAN}	Constitutively expressed <i>crtZ</i> gene from <i>P. ananatis</i>	4

pooled and reextracted with an equal volume of hexane after the addition of an equal volume of double-distilled water. The collected color fractions were dried completely using an EZ-2 Plus centrifugal evaporator (Genevac Inc., NY), and resuspended in 0.5 ml of acetone. After centrifugation (13,000 rpm, 20 min), the extracts were filtered (0.45-μm GHP membrane; Pall) to remove the fine particles.

Analysis of carotenoids. Thin-layer chromatography (TLC) analysis was performed using a 100% hexane solvent system for the initial analysis (4). High-pressure liquid chromatography (HPLC) analysis was carried out with a Zorbax Eclipse XDB-C18 column (4.6 by 150 mm, 5 μm; Agilent Technologies); the elution was performed under isocratic conditions with a solvent system containing 80% acetonitrile, 15% methanol,

and 5% isopropanol at a flow rate of 1 ml/min by using an Agilent 1200 system equipped with a photodiode array detector. For structural elucidation, carotenoids were identified using a combination of HPLC retention times, UV-visible (UV-Vis) absorption spectra, and mass fragmentation spectra. Mass fragmentation spectra were monitored in the mass range of m/z 300 to 800 on a liquid chromatography-mass spectrometer (LC/MS) (Agilent 6150) equipped with an atmospheric pressure chemical ionization (APCI) or an electrospray ionization (ESI) ion source (Agilent Technologies, CA). For the reduction of carotenoids with NaBH_4 , carotenoids were dried and resuspended in 100% ethanol and then incubated for 1 h in the dark at 30°C after a few crystals of NaBH_4 (22) were added.

In vitro CrtZ activity assay. *In vitro* CrtZ activity was assayed by the method of Hundle et al. (23) with some modifications. *E. coli* cells containing the plasmid pUCM (as the negative control) and pUCM-Z_{PAG} were grown in LB medium (300 ml) at 30°C for 12 h. The cells were pelleted, washed, resuspended in 300 μl sodium phosphate buffer (100 mM, pH 7.0), and incubated for 15 min at 25°C after the addition of 3 μl of lysozyme (100 mg/ml). The cells were then sonicated on ice (65% power with a cycle of 5 s pulse-on and 10 s pulse-off for 75 s), and the cell debris was removed by centrifugation at 13,000 rpm for 30 min at 4°C. The crude protein extracts were collected, quantified using a Bio-Rad protein assay kit (Bio-Rad), and used directly for *in vitro* assays. The reactions were started at 30°C for 14 h by adding 300 μl of protein extract (~5 μg) into a 200- μl mixture of sodium phosphate buffer (100 mM, pH 7.0) containing 3 μl of FeCl_2 (20 mM), 0.3 μl of Tween 80, and 1.2 nmol of β -carotene.

Nucleotide sequence accession numbers. The GenBank accession numbers of carotenogenic enzymes of *P. agglomerans* KCTC 2479 are as follows: CrtE, JX871355; CrtB, JX871356; CrtI, JX871357; CrtY, JX871358; CrtZ, JX871359.

RESULTS AND DISCUSSION

Construction of platform modules expressing *P. agglomerans* carotenoid pathway enzymes. For the construction of basic carotenoid expression modules for functional complementation, *P. agglomerans* carotenoid biosynthetic genes were chosen because these pathway genes have been extensively used as a model system in bacteria and yeasts (8). Unidentified carotenoid pathway genes of yellow *P. agglomerans* KCTC 2479 were obtained by performing PCR on the basis of the corresponding gene sequences of *P. agglomerans* pv. *milletiae* and *Pantoea* sp. C1B1Y (Table 2). In sequence analysis, 5 cloned genes from *P. agglomerans* showed a high homology to those from *P. agglomerans* pv. *milletiae* (97 to 99%), *Pantoea* sp. C1B1Y (98 to 99%), and *P. ananatis* LMG20103 (73 to 87%) (see Table S1 in the supplemental material). Each gene encoding a carotenoid pathway enzyme (CrtE_{PAG}, CrtB_{PAG}, CrtI_{PAG}, CrtY_{PAG}, or CrtZ_{PAG}) was individually modulated and then sequentially assembled into the pACYC184 vector to generate pACM-E_{PAG}-B_{PAG}, pACM-B_{PAG}-I_{PAG}, pACM-E_{PAG}-I_{PAG}, pACM-E_{PAG}-B_{PAG}-I_{PAG}, pACM-E_{PAG}-B_{PAG}-I_{PAG}-Y_{PAG}, and pACM-E_{PAG}-B_{PAG}-I_{PAG}-Y_{PAG}-Z_{PAG}. To investigate the functionality of the heterologous carotenoid biosynthetic enzymes, we selected 15 heterogeneous lycopene biosynthetic enzymes (CrtE, CrtB, and CrtI) from 5 carotenogenic microorganisms (*Brevibacterium linens*, *Corynebacterium glutamicum*, *Rhodobacter sphaeroides*, *Rhodobacter capsulatus*, and *Rhodospirillum rubrum*) and 3 carotene cyclases (CrtYs) from 3 carotenogenic microorganisms (*Brevibacterium linens*, *Corynebacterium glutamicum*, and *P. ananatis*) (Table 1).

Functional complementation of heterogeneous phytoene desaturases (CrtIs) from 5 carotenogenic microorganisms. First, we investigated the heterologous complementations of 5 CrtIs from 5 carotenogenic microorganisms (BLI, CrtI of *B. linens*;

TABLE 2 Primers used for cloning *Pantoea agglomerans* in this study

Gene	Sequence ^a	Enzyme site
<i>crtE</i>	F: 5'-GCTCTAGAAAGGAGGATTACAAAATGATG GTCTGCGCA-3'	XbaI
	R: 5'-CCGGAATTCCTAACTGACGGCAGC-3'	EcoRI
<i>crtB</i>	F: 5'-GCTCTAGAAAGGAGGATTACAAAATG GMGGTKGGMTCG-3'	XbaI
	R: 5'-CCGGAATTCCTTAGATGGGGCGCTG-3'	EcoRI
<i>crtI</i>	F: 5'-GC TCTAGAAAGGAGGATTACAAAAT GAAWMSAACTACR-3'	XbaI
	R: 5'-CCGGAATTCCTCAWRYCAGRTCCYC-3'	EcoRI
<i>crtX</i>	F: 5'-GCTCTAGAAAGGAGGATTACAAAATG AGCCACTTTGCGGTC-3'	XbaI
	R: 5'-CCGGAATTCATACCGCGGCATAGT-3'	EcoRI
<i>crtY</i>	F: 5'-GCTCTAGAAAGGAGGATTACAAAATGC CGCGGTATGATCTG-3'	XbaI
	R: 5'-CCGGAATTCATTGCATCGCCTGTTG-3'	EcoRI
<i>crtZ</i>	F: 5'-GCTCTAGAAAGGAGGATTACAAAATGTT GTGGATTTGGAATGC-3'	XbaI
	R: 5'-CCGGAATTCCTACTTCCCGGGTGGCG-3'	EcoRI

^a Underlining indicates restriction enzyme sites, and bold indicates mixed nucleotides (M = A and C; R = A and G; W = A and T; S = C and G; Y = C and T). F, forward; R, reverse.

CGI, CrtI of *C. glutamicum*; RSI, CrtI of *R. sphaeroides*; RCI, CrtI of *R. capsulatus*; and RBI, CrtI of *R. baltica*) and the homologous complementation of CrtI from *P. agglomerans* (PAI) with the *P. agglomerans* carotenogenic module expressing CrtE_{PAG} + CrtB_{PAG}. Figure 2A shows the phylogenetic distances between the 6 CrtIs (PAI, BLI, CGI, RSI, RCI, and RBI). Coexpression of each CrtI with the module expressing CrtE_{PAG} + CrtB_{PAG} changed the color densities of the recombinant *E. coli* cells (Fig. 2B). HPLC and LC/MS analysis detected carotenoid peaks in the extracts of 5 recombinant *E. coli* cells but not in a complementation of RBI + CrtE_{PAG} + CrtB_{PAG} or in a negative control expressing empty vectors (Fig. 2C). Interestingly, RSI and RCI produced neurosporene and lycopene at a similar ratio in this study (Fig. 2D), a result that conflicts with the reported activity of CrtI (RCI) from *R. capsulatus*, which is known to produce only neurosporene as an end product (29). Unexpectedly, the carotenoids 3,4,3',4'-tetrahydrolycopene and 3,4-didehydrolycopene were detected in the homologous complementation PAI + CrtE_{PAG} + CrtB_{PAG} and the heterologous complementation CGI + CrtE_{PAG} + CrtB_{PAG}, respectively. In other studies, the rare, fully saturated 3,4,3',4'-tetrahydrolycopene was produced when a CrtI generated by directed evolution was involved (18) or wild-type CrtI of *P. ananatis* was expressed at high levels (11). BLI, CGI, and RBI, which belong to an outgroup of the phylogenetic tree, produced a far smaller amount of carotenoids, suggesting that these heterologous complementations were less efficient in converting phytoene into lycopene. This hypothesis is supported by the fact that the 3 enzymes were able to produce more lycopene with their own pathway enzymes (unpublished data for CGI and RBI; see reference 15 for BLI). There were no distinguishable differences in the expression observed by performing SDS-PAGE (see the supplemental material).

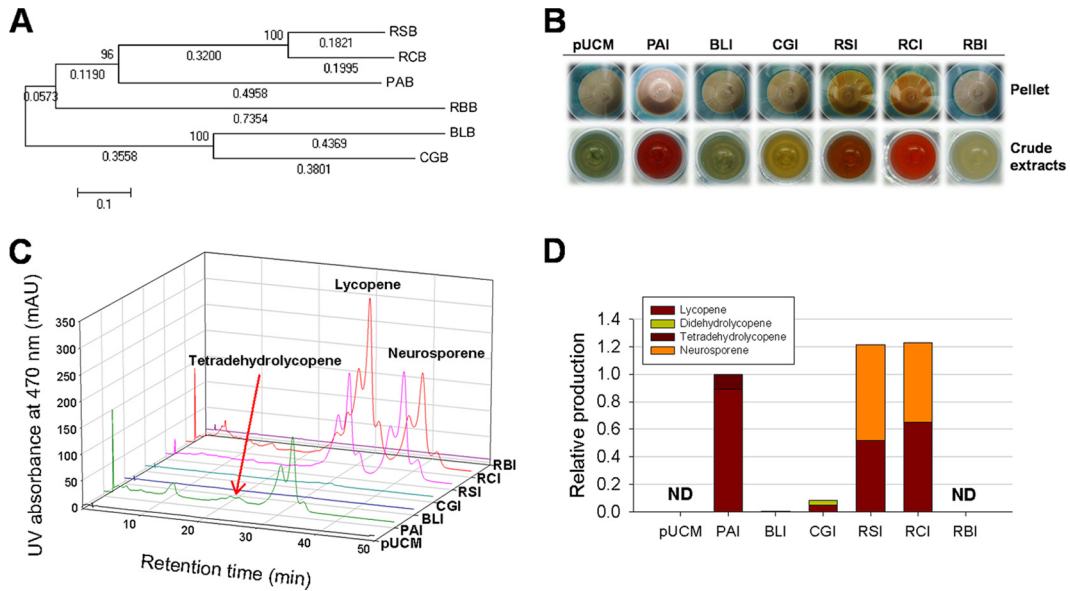


FIG 2 Functional complementations of 6 CrtIs from carotenogenic microorganisms in *E. coli* expressing CrtE and CrtB from *Pantoea agglomerans*. (A) Phylogenetic tree of 6 CrtIs from 6 different carotenogenic microorganisms. The neighbor-joining tree is based on the CrtI protein sequence. Bootstrap values expressed as a percentage of 1,000 replications are shown next to each node. (B) Pellets (upper row) and extracts (lower row) of recombinant *E. coli* expressing lycopene biosynthetic enzymes (CrtE, CrtB, and CrtI). (C) HPLC analysis of the carotenoid profiles of recombinant *E. coli* expressing lycopene biosynthetic enzymes. (D) Relative production of carotenoids in recombinant *E. coli* expressing lycopene biosynthetic enzymes. PAI, CrtI of *P. agglomerans*; BLI, CrtI of *B. linens*; CGI, CrtI of *C. glutamicum*; RSI, CrtI of *R. sphaeroides*; RCI, CrtI of *R. capsulatus*; RBI, CrtI of *R. baltica*. The following carotenoids were identified: 3,4,3',4'-tetradehydrolycopene (λ_{max} 493, 516, and 540); 3,4-didehydrolycopene (λ_{max} 460, 491, and 523); lycopene (λ_{max} 447, 473, and 503); and neurosporene (λ_{max} 419, 442, and 470). ND, not detected.

Functional complementation of heterogeneous phytoene synthases (CrtBs) from 5 carotenogenic microorganisms. Next, the heterologous complementations of 5 CrtBs (BLB, CrtB of *B. linens*; CGB, CrtB of *C. glutamicum*; RSB, CrtB of *R. sphaeroides*;

RCB, CrtB of *R. capsulatus*; and RBB, CrtB of *R. baltica*) and the homologous complementation of CrtB (PAB) were investigated in *E. coli* cells expressing CrtE_{PAG} + CrtI_{PAG}. Phylogenetic distances between the 6 CrtBs (PAB, BLB, CGB, RSB, RCB, and RBB)

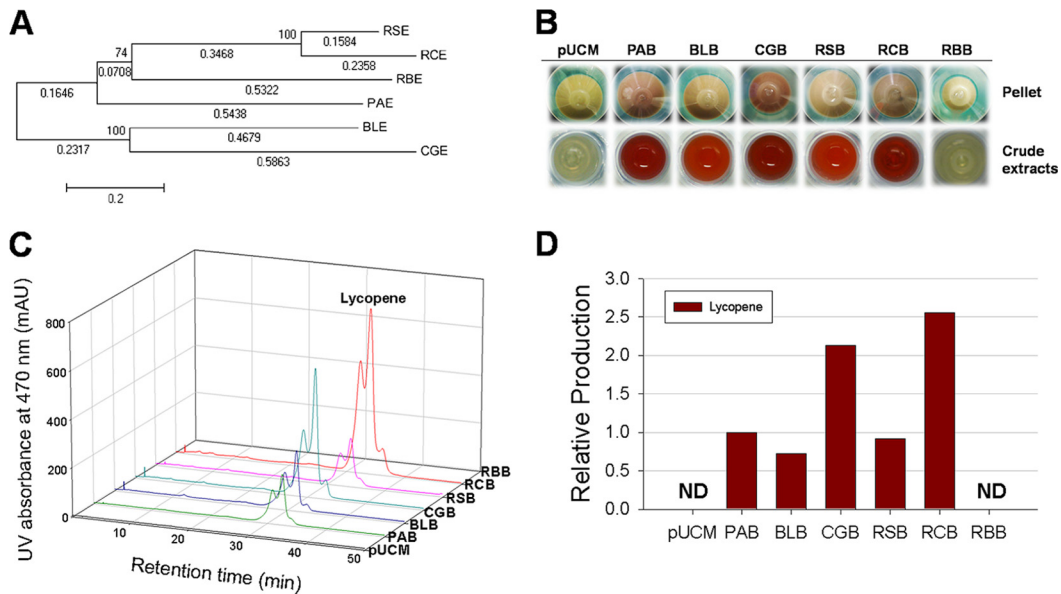


FIG 3 Functional complementations of 6 CrtBs from carotenogenic microorganisms in *E. coli* expressing CrtE and CrtI from *Pantoea agglomerans*. (A) Phylogenetic tree of 6 CrtBs from 6 different carotenogenic microorganisms. The neighbor-joining tree is based on the CrtB protein sequence. Bootstrap values expressed as a percentage of 1,000 replications are shown next to each node. (B) Pellets (upper row) and extracts (lower row) of recombinant *E. coli* expressing lycopene biosynthetic enzymes (CrtE, CrtB, and CrtI). (C) HPLC analysis of the carotenoid profiles of recombinant *E. coli* expressing lycopene biosynthetic enzymes. (D) Relative production of carotenoids in recombinant *E. coli* expressing lycopene biosynthetic enzymes. PAB, CrtB of *P. agglomerans*; BLB, CrtB of *B. linens*; CGB, CrtB of *C. glutamicum*; RSB, CrtB of *R. sphaeroides*; RCB, CrtB of *R. capsulatus*; RBB, CrtB of *R. baltica*. The following carotenoid was identified: lycopene (λ_{max} 447, 473, and 503). ND, not detected.

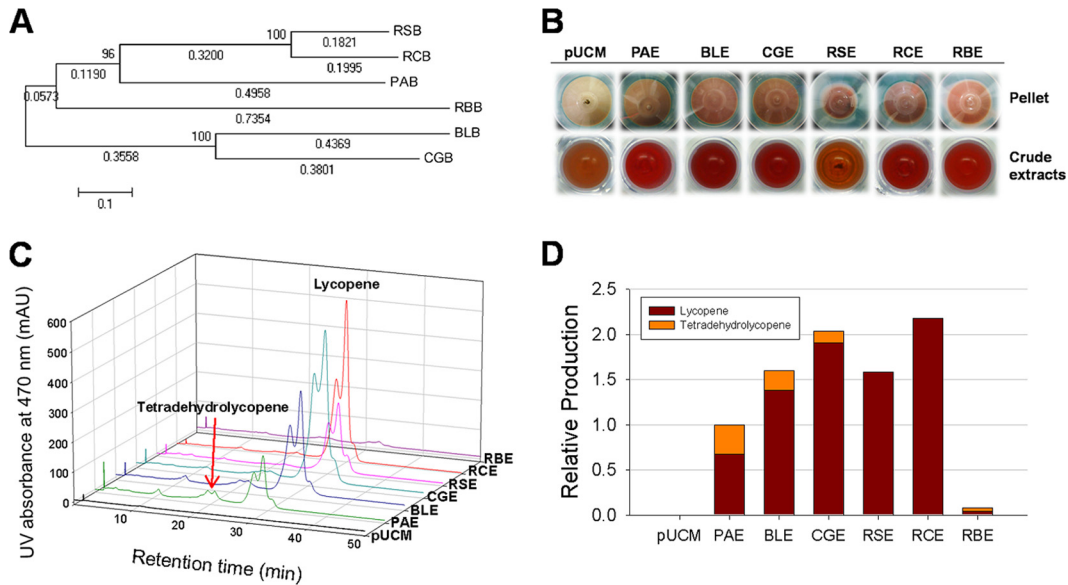


FIG 4 Functional complementations of 6 CrtEs from carotenogenic microorganisms in *E. coli* expressing CrtB and CrtI from *Pantoea agglomerans*. (A) Phylogenetic tree of 6 CrtEs from 6 different carotenogenic microorganisms. The neighbor-joining tree is based on the CrtE protein sequence. Bootstrap values expressed as a percentage of 1,000 replications are shown next to each node. (B) Pellets (upper row) and extracts (lower row) of recombinant *E. coli* expressing lycopene biosynthetic enzymes (CrtE, CrtB, and CrtI). (C) HPLC analysis of the carotenoid profiles of recombinant *E. coli* expressing lycopene biosynthetic enzymes. (D) Relative production of carotenoids in recombinant *E. coli* expressing lycopene biosynthetic enzymes. PAE, CrtE of *P. agglomerans*; BLE, CrtE of *B. linens*; CGE, CrtE of *C. glutamicum*; RSE, CrtE of *R. sphaeroides*; RCE, CrtE of *R. capsulatus*; RBE, CrtE of *R. baltica*. The following carotenoids were identified: 3,4,3',4'-tetradehydrolycopene (λ_{\max} , 493, 516, and 540) and lycopene (λ_{\max} , 447, 473, and 503).

were similar to those between the CrtIs (Fig. 3A). However, when each CrtB was complemented with the module expressing CrtE_{PAG} + CrtI_{PAG}, recombinant *E. coli* cells showed a deeper color (Fig. 3B) than that observed in the case of *E. coli* expressing CrtI from different sources. Unlike the carotenoid profiles observed in the CrtI complementations, only lycopene was detected in 5 of the CrtB complementations. No carotenoids were detected for the RBB complementation (Fig. 3C). Notably, RSB and RCB produced only lycopene without neurosporene (8, 19), unlike RSI and RCI (compare Fig. 2D and Fig. 3D). Furthermore, complementations of BLB and CGB, which belong to an outgroup of the phylogenetic tree, produced more lycopene than the complementations of BLI and CGI did (compare Fig. 2D and 3D). This suggests that BLB and CGB are better fitted than BLI and CGI to assemble the heterologous carotenogenic machinery in *E. coli* (4). The highest production of lycopene was observed with RCB, followed by CGB, PAB, RSB, and BLB. Interestingly, even though RCB and RSB come from the same genus (*Rhodobacter*) and are separated by a short phylogenetic distance (Fig. 3A), they showed a different heterologous complementation pattern in *E. coli*, as seen in a different pattern of carotenogenic enzymes from *P. agglomerans* and *P. ananatis* (24).

Functional complementation of heterogeneous GGPP synthases (CrtYs) from 5 carotenogenic microorganisms. The heterologous complementations of 5 CrtYs (BLE, CrtY of *B. linens*; CGE, CrtY of *C. glutamicum*; RSE, CrtY of *R. sphaeroides*; RCE, CrtY of *R. capsulatus*; and RBE, CrtY of *R. baltica*) and the homologous complementation of CrtY of *P. agglomerans* (PAE) were investigated with a module expressing CrtB_{PAG} + CrtI_{PAG} (Fig. 4A). Unlike the results obtained with CrtI and CrtB complementations, all CrtE complementations, including RBE, turned recombinant *E. coli* cells a deep reddish color (Fig. 4B). HPLC and

LC/MS analysis showed that PAE, BLE, CGE, and RBE produced 3,4,3',4'-tetradehydrolycopene as well as lycopene (Fig. 4C). Detection of 3,4,3',4'-tetradehydrolycopene in CrtE complementations is very unusual because so far only CrtI has been reported to be capable of synthesizing 3,4,3',4'-tetradehydrolycopene or 3,4-didehydrolycopene (2). Therefore, most research has focused on CrtI to understand the desaturation of phytoene (19). It is obvious that, as shown in Fig. 1, CrtE is not directly responsible for the biosynthesis of 3,4,3',4'-tetradehydrolycopene and lycopene. However, for the first time, to our knowledge, our results clearly show that CrtE induces, through an unknown mechanism, the

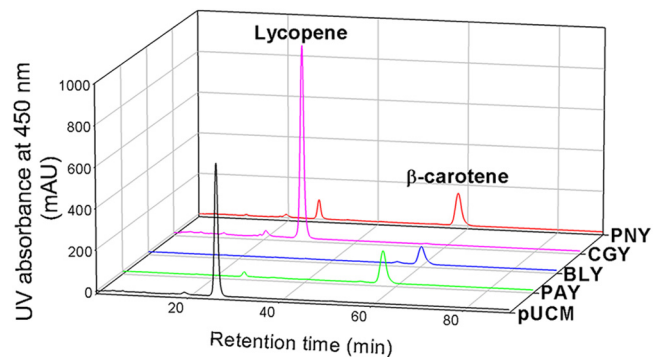


FIG 5 Functional complementations of 4 CrtYs from carotenogenic microorganisms in *E. coli* expressing CrtE, CrtB, and CrtI from *Pantoea agglomerans*. HPLC analysis of the carotenoid profiles of recombinant *E. coli* expressing a lycopene cyclase with the lycopene biosynthetic enzymes. PAY, CrtY of *P. agglomerans*; BLY, CrtY of *B. linens*; CGY, CrtY of *C. glutamicum*; PNY, CrtY of *P. ananatis*. The following carotenoids were identified: β -carotene (λ_{\max} , 427, 453, and 481) and lycopene (λ_{\max} , 447, 473, and 503).

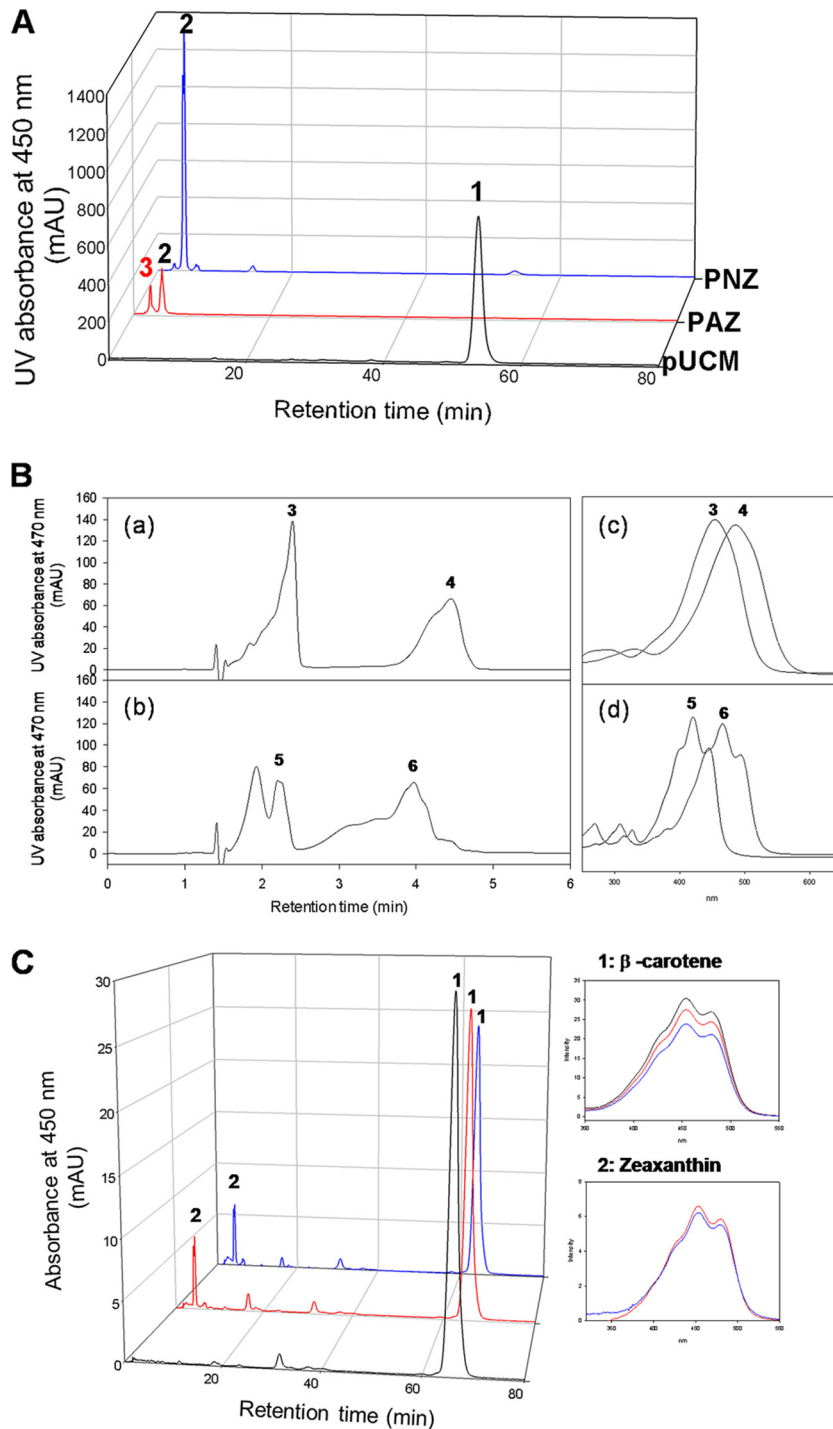


FIG 6 Functional complementations of 2 CrtZs from carotenogenic microorganisms in *E. coli* expressing CrtE, CrtB, CrtI, and CrtY from *Pantoea agglomerans*. (A) HPLC analysis of the carotenoid profiles of recombinant *E. coli* expressing a β -carotene hydroxylase with the β -carotene biosynthetic enzymes. PAZ, CrtZ of *P. agglomerans*; PNZ, CrtZ of *P. ananatis*. The following carotenoids were identified: peak 1, β -carotene (λ_{\max} , 427, 453, and 481); peak 2, zeaxanthin (λ_{\max} , 427, 453, and 481); peak 3, unidentified keto-hydroxy compounds. (B) HPLC analysis of unidentified keto-hydroxy compounds before (a) and after (b) reduction with NaBH_4 . UV-Vis spectra of peaks 3 and 4 (c) and peaks 5 and 6 (d). Peaks 3 and 4, oxidized unidentified keto-hydroxy compounds; peaks 5 and 6, reduced unidentified keto-hydroxy compounds. (C) HPLC analysis of the *in vitro* activity of CrtZ with β -carotene.

carotenogenic machinery to synthesize 3,4,3',4'-tetrahydrolycopene in the heterologous host *E. coli*. Similar to RSB and RCB, RSE and RCE produced only lycopene without neurosporene accumulation (compare Fig. 3D and 4D). Interestingly, with the

exception of RBE, heterologous complementation of CrtE (PAE, BLE, CGE, and RBE) produced more total carotenoid (3,4,3',4'-tetrahydrolycopene + lycopene) than did homologous complementation of PAE (Fig. 4D). CrtE has been considered one of the

rate-limiting enzymes in carotenoid biosynthesis (24). Therefore, the enhancement of carotenoid production can be explained by CrtEs with different affinities for farnesyl pyrophosphate (FPP) having flexibility in the heterologous carotenogenic machinery assembly. How CrtE influenced the activity of CrtI to produce the unusual 3,4,3',4'-tetrahydrolycopene product as well as lycopene, however, remains to be answered.

Functional complementation of heterogeneous lycopene cyclases (CrtYs) from 3 carotenogenic microorganisms. Next, we further extended our complementation study to the β -carotene pathway in *E. coli*. Because the microbial sources for lycopene cyclase CrtY were relatively limited, 3 lycopene cyclases (PNY, CrtY of *P. ananatis*; BLY, CrtY_cY_d of *B. linens*; and PAY, CrtY of *P. agglomerans*) and 1 carotene cyclase (CGY, CrtY_cY_f of *C. glutamicum*) were chosen and then complemented with a lycopene module expressing PAE + PAB + PAI in *E. coli*. Both heterologous BLY and homologous PAY completely converted lycopene into β -carotene, while heterologous PNY did not completely convert lycopene into β -carotene (Fig. 5). As expected, CGY was not functionally complemented with a lycopene module because CGY has a substrate specificity for carotenoid backbones with C₄₅ and C₅₀ rather than C₄₀ lycopene (25). CGY was functionally complemented with homologous upstream pathway enzymes in *E. coli* (data not shown).

Functional complementation of β -carotene hydroxylase CrtZ. Two CrtZ enzymes (PNZ, CrtZ of *P. ananatis*; and PAZ, CrtZ of *P. agglomerans*) were further complemented with a β -carotene module expressing PAE + PAB + PAI + PAY in *E. coli*. Both heterologous PNZ and homologous PAZ produced zeaxanthin without accumulation of an intermediate β -cryptoxanthin derivative (Fig. 6A). However, unlike PNZ, PAZ complementation produced additional polar compounds (Fig. 6A). The polar compound could be a carotenoid with a keto group(s) in its structure, which has been deduced on the basis of the reduction of the new polar compound with NaBH₄ and the UV-Vis spectra of the reduced compounds (Fig. 6B). Interestingly, the conversion of β -carotene to zeaxanthin without formation of polar compounds was observed only *in vitro* (Fig. 6C). Therefore, we assume that a specific *in vivo* environment may account for the unusual activity of PAZ in *E. coli*. It is worth noting that CrtZ has a relatively broad substrate preference (26) and is bifunctional as a hydroxylase/ketolase (9). Detailed structural analysis of these compounds is under way.

In conclusion, microbial carotenogenic pathway enzymes in synthetic expression modules showed unusual activities that differed from those in previous reports when complemented with *P. agglomerans* pathway enzymes in the heterologous host *E. coli*. In particular, the expression of heterologous CrtEs from *B. linens*, *C. glutamicum*, and *R. baltica* and the homologous CrtE from *P. agglomerans* induced, by an unknown mechanism, the *P. agglomerans* CrtI to convert its substrate phytoene into a rare 3,4,3',4'-tetrahydrolycopene as well as the expected lycopene. This indicates that single expression of CrtE, the first upstream enzyme in the carotenoid biosynthesis pathway (Fig. 1), can influence carotenoid profiles in *E. coli*. Additionally, heterologous CrtIs (from *R. sphaeroides*, *R. capsulatus*, and *C. glutamicum*) and homologous CrtI (from *P. agglomerans*) converted phytoene into unusual carotenoids (for example, lycopene by CrtIs from *R. sphaeroides* and *R. capsulatus*) as well as into the expected end product carotenoids. Therefore, the functional complementation of carotenoid path-

way enzymes from different sources is a useful methodology for diversifying biosynthesis as nature does (8).

ACKNOWLEDGMENTS

This work was supported by Polar Academic Program (PAP), KOPRI. This work was also supported by the Priority Research Centers Program through the National Research Foundation of Korea (NRF), funded by the Ministry of Education, Science and Technology (2011-0022978).

REFERENCES

1. Armstrong GA, Hearst JE. 1996. Genetics and molecular biology of carotenoid pigment biosynthesis. *FASEB J.* 10:228–237.
2. Schmidt-Dannert C, Lee PC. 2009. Carotenoids, microbial processes. In Flickinger MC (ed), *Encyclopedia of industrial biotechnology*. John Wiley & Sons, Inc., Hoboken, NJ.
3. Lee PC, Salomon C, Mijts B, Schmidt-Dannert C. 2008. Biosynthesis of ubiquinone compounds with conjugated prenyl side chains. *Appl. Environ. Microbiol.* 74:6908–6917.
4. Lee PC, Momen AZR, Mijts BN, Schmidt-Dannert C. 2003. Biosynthesis of structurally novel carotenoids in *Escherichia coli*. *Chem. Biol.* 10:453–462.
5. Misawa N, Nakagawa M, Kobayashi K, Yamano S, Izawa Y, Nakamura K, Harashina K. 1990. Elucidation of the *Erwinia uredovora* carotenoid biosynthetic pathway by functional analysis of gene products expressed in *Escherichia coli*. *J. Bacteriol.* 172:6704–6712.
6. Umeno D, Tobias AV, Arnold FH. 2005. Diversifying carotenoid biosynthetic pathways by directed evolution. *Microbiol. Mol. Biol. Rev.* 69:51–78.
7. Tobias AV, Arnold FH. 2006. Biosynthesis of novel carotenoid families based on unnatural carbon backbones: a model for diversification of natural product pathways. *Biochim. Biophys. Acta* 761:235–246.
8. Lee PC, Schmidt-Dannert C. 2002. Metabolic engineering towards biotechnological production of carotenoids in microorganisms. *Appl. Microbiol. Biotechnol.* 60:1–11.
9. Ojima K, Breitenbach J, Visser H, Setoguchi Y, Tabata K, Hoshino T, van den Berg J, Sandmann G. 2006. Cloning of the astaxanthin synthase gene from *Xanthophyllomyces dendrorhous* (*Phaffia rhodozyma*) and its assignment as a β -carotene 3-hydroxylase/4-ketolase. *Mol. Genet. Genomics* 275:148–158.
10. Reference deleted.
11. Albermann C. 2011. High versus low level expression of the lycopene biosynthesis genes from *Pantoea ananatis* in *Escherichia coli*. *Biotechnol. Lett.* 33:313–319.
12. Chae HS, Kim KH, Kim SC, Lee PC. 2010. Strain-dependent carotenoid productions in metabolically engineered *Escherichia coli*. *Appl. Biochem. Biotechnol.* 162:2333–2344.
13. Kim JR, Kong MK, Lee SY, Lee PC. 2010. Carbon sources-dependent carotenoid production in metabolically engineered *Escherichia coli*. *World J. Microbiol. Biotechnol.* 26:2231–2239.
14. Kim SH, Lee PC. 2012. Functional expression and extension of staphylococcal staphyloxanthin biosynthetic pathway in *Escherichia coli*. *J. Biol. Chem.* 287:21575–21583.
15. Kim SH, Park YH, Schmidt-Dannert C, Lee PC. 2010. Redesign, reconstruction, and directed extension of the *Brevibacterium linens* C40 carotenoid pathway in *Escherichia coli*. *Appl. Environ. Microbiol.* 76:5199–5206.
16. Lee PC, Holtzapfel E, Schmidt-Dannert C. 2010. Novel activity of *Rhodobacter sphaeroides* spheroidene monooxygenase CrtA expressed in *Escherichia coli*. *Appl. Environ. Microbiol.* 76:7328–7331.
17. Kovach ME, Elzer PH, Hill DS, Robertson GT, Farris MA, Roop RM, II, Peterson KM. 1995. Four new derivatives of the broad-host-range cloning vector pBBR1MCS, carrying different antibiotic-resistance cassettes. *Gene* 166:175–176.
18. Schmidt-Dannert C, Umeno D, Arnold FH. 2000. Molecular breeding of carotenoid biosynthetic pathways. *Nat. Biotechnol.* 18:750–753.
19. Sandmann G. 2009. Evolution of carotene desaturation: the complication of a simple pathway. *Arch. Biochem. Biophys.* 483:169–174.
20. Thomas AH. 1999. BioEdit: a user-friendly biological sequence alignment editor and analysis program for Windows 95/98/NT. *Nucleic Acids Symp. Ser.* 41:95–98.
21. Tamura K, Dudley J, Nei M, Kumar S. 2007. MEGA4: molecular evolutionary genetics analysis (MEGA) software version 4.0. *Mol. Biol. Evol.* 24:1596–1599.

22. Cooney JJ, Marks HW, Smith AM. 1966. Isolation and identification of canthaxanthin from *Micrococcus roseus*. *J. Bacteriol.* **92**:342–345.
23. Hundle B, O'Brien D, Beyer P, Kleing H, Hearst J. 1993. In vitro expression and activity of lycopene cyclase and beta-carotene hydroxylase from *Erwinia herbicola*. *FEBS Lett.* **315**:329–334.
24. Yoon SH, Kim JE, Lee SH, Park HM, Choi MS, Kim JY, Shin YC, Keasling JD, Kim SW. 2007. Engineering the lycopene synthetic pathway in *E. coli* by comparison of the carotenoid genes of *Pantoea agglomerans* and *Pantoea ananatis*. *Appl. Microbiol. Biotechnol.* **74**:131–139.
25. Krubasik P, Kobayashi M, Sandmann G. 2001. Expression and functional analysis of a gene cluster involved in the synthesis of decaprenoxanthin reveals the mechanisms for C50 carotenoid formation. *Eur. J. Biochem.* **268**:3702–3708.
26. Choi S-K, Matsuda S, Hoshino T, Peng X, Misawa N. 2006. Characterization of bacterial β -carotene 3,3'-hydroxylases, CrtZ, and P450 in astaxanthin biosynthetic pathway and adonirubin production by gene combination in *Escherichia coli*. *Appl. Microbiol. Biotechnol.* **72**:1238–1246.
27. Mijts BN, Lee PC, Schmidt-Dannert C. 2005. Identification of a carotenoid oxygenase synthesizing acyclic xanthophylls: combinatorial biosynthesis and directed evolution. *Chem. Biol.* **12**:453–460.
28. Sambrook J, Russell DW. 2001. *Molecular cloning: a laboratory manual*, 3rd ed. Cold Spring Harbor Laboratory Press, New York, NY.
29. Wang CW, Liao JC. 2001. Alteration of product specificity of *Rhodobacter sphaeroides* phytoene desaturase by directed evolution. *J. Biol. Chem.* **276**:41161–41164.