



## **The PARADIGM project I: a multiscale radio morphological analysis of local U/LIRGS**









Downloaded from: <https://research.chalmers.se>, 2026-04-06 08:32 UTC

Citation for the original published paper (version of record):

Lucatelli, G., Beswick, R., Moldon, J. et al (2024). The PARADIGM project I: a multiscale radio morphological analysis of local U/LIRGS. *Monthly Notices of the Royal Astronomical Society*, 529(4): 4468-4499. <http://dx.doi.org/10.1093/mnras/stae744>

N.B. When citing this work, cite the original published paper.

# The PARADIGM project I: a multiscale radio morphological analysis of local U/LIRGs

Geferson Lucatelli <sup>1,★</sup>, Robert J. Beswick,<sup>1</sup> Javier Moldón <sup>1,2</sup>, Miguel A. Pérez-Torres <sup>2,3,4</sup>,  
John E. Conway,<sup>5</sup> Antxon Alberdi,<sup>2</sup> Cristina Romero-Cañizales <sup>6</sup>, Eskil Varenius <sup>5</sup>,  
Hans-Rainer Klöckner <sup>7</sup>, Loreto Barcos-Muñoz,<sup>8,9</sup> Marco Bondi,<sup>10</sup> Simon T. Garrington,<sup>1</sup>  
Susanne Aalto,<sup>11</sup> Willem A. Baan <sup>12,13</sup> and Ylva M. Pihlström <sup>14,†</sup>

*Affiliations are listed at the end of the paper*

Accepted 2024 March 8. Received 2024 February 13; in original form 2023 September 29

## ABSTRACT

Disentangling the radio flux contribution from star formation (SF) and active-galactic-nuclei (AGNs) activity is a long-standing problem in extragalactic astronomy, since at frequencies of  $\lesssim 10$  GHz, both processes emit synchrotron radiation. We present in this work the general objectives of the PARADIGM (PAnchromatic high-Resolution Analysis of DIstant Galaxy Mergers) project, a multi-instrument concept to explore SF and mass assembly of galaxies. We introduce two novel general approaches for a detailed multiscale study of the radio emission in local (ultra) luminous infrared galaxies (U/LIRGs). In this work, we use archival interferometric data from the Very Large Array (VLA) centred at  $\sim 6$  GHz (*C* band) and present new observations from the *e*-Multi-Element Radio-Linked Interferometer Network (*e*-MERLIN) for UGC 5101, VV 705, VV 250, and UGC 8696. Using our image decomposition methods, we robustly disentangle the radio emission into distinct components by combining information from the two interferometric arrays. We use *e*-MERLIN as a probe of the core-compact radio emission (AGN or starburst) at  $\sim 20$  pc scales, and as a probe of nuclear diffuse emission, at scales  $\sim 100$ – $200$  pc. With VLA, we characterize the source morphology and the flux density on scales from  $\sim 200$  pc up to and above 1 kpc. As a result, we find deconvolved and convolved sizes for nuclear regions from  $\sim 10$  to  $\sim 200$  pc. At larger scales, we find sizes of 1.5–2 kpc for diffuse structures (with effective sizes of  $\sim 300$ – $400$  pc). We demonstrate that the radio emission from nuclear extended structures ( $\sim 100$  pc) can dominate over core-compact components, providing a significant fraction of the total multiscale SF output. We establish a multiscale radio tracer for SF by combining information from different instruments. Consequently, this work sets a starting point to potentially correct for overestimations of AGN fractions and underestimates of SF activity.

**Key words:** techniques: image processing – techniques: interferometric – galaxies: nuclei – galaxies: starburst – galaxies: star formation – radio continuum: galaxies.

## 1 INTRODUCTION

Luminous and ultraluminous infrared galaxies (U/LIRGs) are some of the most energetic extragalactic sources in the local Universe, emitting mostly in infrared (IR) wavelengths, with LIRGs having luminosities of  $10^{11} < L_{\text{IR}}[8\text{--}1000\ \mu\text{m}] < 10^{12} L_{\odot}$  and ULIRGs  $L_{\text{IR}}[8\text{--}1000\ \mu\text{m}] > 10^{12} L_{\odot}$  (e.g. Sanders & Mirabel 1996; Lonsdale, Farrah & Smith 2006). The radio emission from these sources originates from distinct physical processes, such as active galactic nuclei (AGNs), jets, intense star formation (SF) at the nuclear regions – starbursts (SB), and SF activity at scales larger than  $\sim 200$  pc. Currently, there is a challenge on how to decompose the radio emission into each individual mechanism. It is unclear how a multiscale tracer of SF can be constructed in order to comprehend

underlying physical processes at all possible scales and frequencies. Having such a metric would be ideal, since SF is one of the most fundamental physical processes that can be used as a proxy for galaxy evolution and mass assembly studies (e.g. Bauer et al. 2013; Ilbert et al. 2013; Madau & Dickinson 2014). SF is responsible for converting interstellar gas clouds into star clusters, characterized by the efficiency and rate at which the gas is converted (Hattori et al. 2004; Shangquan et al. 2019). This acts as a major constituent of the dynamics and evolution of a galaxy. SF is also related to the interaction between gas, dust and ionized gas caused by supernova explosions which keeps inducing energy to form new stars, and enhancing the magnetic field strength (e.g. Thompson et al. 2006; Thompson, Quataert & Murray 2009; Drzazga et al. 2011; Schober, Schleicher & Klessen 2016; Vollmer, Soida & Dallant 2022).

Due to the presence of dust, these nuclear regions are almost completely optically obscured, especially in the most compact regions at the centre of galaxies (e.g. Ricci et al. 2017; Hickox & Alexander 2018; Falstad et al. 2021). IR and radio observations are thus essential because they are able to see through the dust, which

\* E-mail: [geferson.lucatelli@postgrad.manchester.ac.uk](mailto:geferson.lucatelli@postgrad.manchester.ac.uk)

† YMP is also an Adjunct Astronomer at the National Radio Astronomy Observatory.

re-emits the ultraviolet radiation from young stars in the far-IR (FIR). Such observations are, therefore, suitable tracers for SF (e.g. Farrah et al. 2008; Rieke et al. 2009; Tabatabaei et al. 2017; Algera et al. 2022; Arango-Toro et al. 2023) and provide high-angular resolution ( $\lesssim 0.1$  arcmin) imaging reconstruction of these regions. At radio frequencies of  $\lesssim 10$  GHz, the dominating form of radio emission is non-thermal synchrotron radiation, which is produced by both AGN and SF activity (Condon 1992). Non-thermal emission related to SF is produced by core-collapse supernovae from massive stars with  $\gtrsim 8 M_{\odot}$  (Linden et al. 2019), it is optically thin and not affected by dust. At intermediate frequencies,  $\sim 10$ – $100$  GHz, the dominant form of radiation is the free-free bremsstrahlung thermal emission (Burke, Graham-Smith & Wilkinson 2019) produced by ionized gas and photoionization of neutral hydrogen around massive SF regions ( $H_{II}$  regions, Murphy et al. 2011), and at frequencies  $\gtrsim 100$  GHz, thermal dust emission becomes dominant.

Most U/LIRGs in the local Universe ( $z \lesssim 0.3$ ) are mergers ( $\sim 80$  per cent, e.g. Larson et al. 2016) while  $\sim 20$  per cent are spiral galaxies, but these fractions change with redshift (e.g. Hung et al. 2014). Besides these systems being rare in the local Universe, their contribution to the total IR output and SF budget dominate at higher redshift  $z \sim 1$ – $2$  (Floc'h et al. 2005; Magnelli et al. 2009). However, there are notable differences between local U/LIRGs and high- $z$  counterparts (Hernán-Caballero et al. 2009; Rujopakarn et al. 2011; Whitaker et al. 2012; Hung et al. 2014) and it is unclear how these systems evolve in time/redshift (Lonsdale et al. 2006). Merger interactions are also relevant in such scenarios since they are a trigger of enhanced SF (Haan et al. 2013; Larson et al. 2016; Calabrò et al. 2019a), resulting in star formation rates (SFR) from dozens to hundreds of  $M_{\odot} \text{ yr}^{-1}$  at the present time and in the 1–10 Myr range. As a result, U/LIRGs are great laboratories to study in detail their structure and evolution (Farrah et al. 2003; Petric et al. 2011; Chen et al. 2013; Stierwalt et al. 2013; Herrero-Illana et al. 2017).

Since the emission of SF happens to co-exist with AGN on multiple scales, it is relatively significant to understand the structure and the nature of the radio emission at all possible physical scales. By mapping the radio emission from nuclear regions ( $\sim 10$ – $100$  pc) up to galactic-scale structures ( $\gtrsim 1$  kpc), we can determine calibrated fractions of the radio power associated to SF across these scales. Such information is essential for estimating both the recent and historic rate at which stars are born in a galaxy. For that, a non-contaminated and multiscale assessment of the radio emission, by removing all possible contributions from an AGN, would yield corrected fractions of the total SF activity. By combining information from different instruments, we tackle this gap from previous research, introducing a robust multiresolution fitting approach to disentangle the radio emission.

Multiple works attempt to separate spatially and spectrally the radio emission coming purely from an AGN and emission coming from star-forming regions (spectral energy distribution (SED) fitting, Galvin et al. 2018; Dey et al. 2022; Yamada et al. 2023), (using brightness temperatures, Morabito et al. 2022), (using data combination and high-resolution observations, Biggs & Ivison 2008), (integral field spectroscopy, Davies et al. 2016) etc. However, uncertainties are still present, and obtaining unbiased measurements for the AGN/SB–SF contribution is challenging.

The aims of this work, and subsequent ones, are to establish a panoramic view of the structure of radio emission and its constituents in U/LIRGs, and to investigate their connection with SF. Understanding the interplay between these processes with the accretion and feedback mechanisms of supermassive black holes at the centres of these sources is crucial to quantify how galaxies evolves over time.

The technical novelty of this work is based on the combination of information from distinct interferometric arrays. These allow us to investigate the structure of radio emission at different spatial scales simultaneously. The same fitting techniques introduced here can potentially be applied to multifrequency observations (including both radio and optical wavelengths) and multi-instrument observations, thereby providing resolved spatial and spectral information for each emission region of galaxies.

Using the previous techniques, we can study SF and physical processes by characterizing the multiscale nature of the radio emission from U/LIRGs. By having the properties of each diffuse structure, we can establish calibration factors for the conversion of radio and IR emission into SFR estimates. This can be used to explore how the radio–IR correlation (Bell 2003) behaves through a multiscale characterization, and evaluate the physical mechanisms responsible for inducing deviations in the correlation.

In this work, we use high-angular resolution observations (0.05–0.3 arcsec) from the *enhanced*-Multi Element Remotely Linked Interferometer Network (*e*-MERLIN) and from the Karl G. Jansky Very Large Array (VLA). Radio interferometry offers a unique way to reconstruct high-angular resolution images, providing unprecedented parsec-scale details of local galaxies, unravelling the mechanisms responsible for producing the associated IR and radio energies.

To unravel the influence that an AGN/SB have on the kiloparsec regimes and above, where diffuse SF is taking place, it is required to understand the contribution that both processes have over the energy generation and how nuclear structures emerge and evolve in such a way that they can be strong enough to shape the global morphologies of these galaxies. Still, it is factually challenging and an open question to discern the contribution of the radio emission between AGN, SB (nuclear SF), and large-scale SF (Pérez-Torres et al. 2021).

The key questions we start investigating in this work and future ones are: what is the connection between source and component morphologies? How does the location of radio components impact the brightness distribution of a source? How can SF processes solely rule or shape a radio source? What is the behaviour of the radio–IR correlation when AGN contamination is removed, for both thermal and non-thermal processes? How does the radio–IR correlation hold when we break down the radio emission into different structural components and scales? We do not expect to answer these questions in this paper, but we post them as a starting point for a series of future works (see Section 2).

By estimating fractions of the radio emission across different physical scales, this work will provide some immediate contributions. We can obtain corrections to the dominant sizes and flux densities on nuclear regions over the influence of an AGN/SB and disentangle that from any existing nuclear emission due to SF processes. This can pinpoint that the proportions of SF emission can be higher than previously expected, hence probing more massive galaxies constrained on SF activity. As a starting point, we exploit these issues in this work, and our specific steps are:

- (i) Measure the sizes and flux densities of the radio emission at distinct physical scales, from 20 to 100 pc covered by *e*-MERLIN to the large-scale regime of  $\sim 0.5$ – $3$  kpc observed by VLA.
- (ii) Disentangle individual subregions of the radio emission in order to quantify their structural properties and compute their fractions to the total source flux density.
- (iii) Obtain a metric for a multiscale SF tracer: separate the nuclear extended ( $\lesssim 100$  pc) SF from the total SF.

This is the first work of project PARADIGM (PANchromatic high-Resolution Analysis of DIstant Galaxy Mergers, see Section

2), and describes a new analysis technique that can be used to maximize the scientific output of data from radio interferometers with complementary  $uv$  spacing. The first phase of PARADIGM focuses on preparatory science for the Square Kilometre Array (SKA), using a combination of instruments that allows us to probe the sky accessible to the SKA in the future. This allows us to efficiently plan SKA observational campaigns with the aim to quantitatively and qualitatively expand the observed galaxies towards higher redshifts, and use larger statistics to measure differences as a function of galaxy mass, morphology, and luminosity.

This paper is structured as follows: in Section 2, we present a general context for a long-term study of U/LIRGs. In Section 3, we present and discuss the observations from  $e$ -MERLIN and VLA used in this work. We also discuss how the data were analysed, calibrated, combined between  $e$ -MERLIN and VLA. We end that section presenting the main imaging results and justify the needs of disentangling the radio emission. In Section 4, we introduce two novel methodologies to decompose the radio emission into distinct components at different scales and show how integrated fluxes densities and associated sizes are estimated. We start by presenting the main results obtained from our combined data in Section 5, in particular, estimated flux densities and sizes for the nuclear and extended regions, and derived properties such as brightness temperatures and SFRs. Consequently, we discuss the main findings and limitations of this work in Section 6, and we end the paper with final remarks and future plans in Section 7. In the online version of the appendices, we provide extra material such as notes on individual sources, additional figures, and complementary text.

Regarding the calculation of distances, we adopt the lambda-cold dark matter model with the following constant values:  $\Omega_\Lambda = 0.692$ ,  $\Omega_{m0} = 0.308$ , and  $H_0 = 67.8 \text{ km s}^{-1} \text{ Mpc}^{-1}$ .

## 2 CONTEXT OF A LONG-TERM MULTIFREQUENCY STUDY OF U/LIRGS

In this section, we provide a brief overview of the PARADIGM project for a future context, and describe the full LIRGI Sample.

### 2.1 The PARADIGM project

Project PARADIGM is positioned within the overarching framework of exploring the SF and mass assembly history of the Universe, focusing on how the combined effects of black hole activity and SF influence the energetic and chemical evolution of galaxies. Our primary objectives encompass:

- (i) contributing to the calibration of the empirically observed radio-to-IR correlation across a diverse range of galaxy types and redshifts;
- (ii) translating radio and IR luminosities into SFRs and efficiency while characterizing the evolution of the initial mass function as a function of time and environmental factors;
- (iii) disentangle the dominant gas and dust heating mechanism in the nuclear regions of galaxies;
- (iv) characterizing the clumpiness of the interstellar medium as indicated by  $H_{II}$  regions, through the assessment of the free-free emitting medium's smoothness/clumpiness.

By pursuing these objectives across a wide spectrum of systems, encompassing various redshifts and a diverse range of phenomenologies, we aim to gain a deeper understanding of the processes that shape galaxy evolution during the most crucial phases of cosmic history.

As an initial step to achieve these goals, we aim to obtain a comprehensive understanding of the evolutionary phases of nuclear SBs in local interacting galaxies situated within the range of 60–250 Mpc, in particular in U/LIRGs. We aim to establish a phenomenological sequence for the evolution of a nuclear SB combining data spanning FIR, mm, and radio wavelengths. We plan to study a sample U/LIRGs at different merging stages to capture the entire lifecycle of a nuclear SB from its onset to its decay.

The primary focus of PARADIGM's observations at this stage is centred on using high-angular resolution instruments. This enables us to discern various physical phenomena that predominate at different frequencies, while also disentangling the individual contributions of structures from tens to hundreds of pc. For the local systems considered, we need subarcsecond resolution for frequencies ranging from MHz to tens of GHz and extends into the millimetre range. Our analysis will cover both morphological and kinematical information from high spatial and spectral resolution data using radio continuum (RC), polarization, and spectral line modes. Therefore, the core of the observational data comes from the SKA pathfinders, the Low-Frequency ARray (LOFAR), Very Long Baseline Interferometry (VLBI),  $e$ -MERLIN (see the next section), the The European VLBI Network (EVN), the Very Long Baseline Array (VLBA), and the VLA, together with the Atacama Large Millimeter Array (ALMA) and the Northern Extended Millimetre Array (NOEMA) at mm wavelengths, each providing resolutions ranging from subarcseconds to tens of milliarcseconds at their respective wavelengths. These angular scales align seamlessly with the capabilities of *JWST*, Extremely Large Telescope (ELT), and *Hubble* at near-IR and optical wavelengths, underscoring our emphasis on high-resolution panchromatic view of the nuclear regions of U/LIRGs. This will be complemented with the development of data analysis techniques such as the multiscale approach described in this work, as well as other spectral analysis in future works.

Within this scope, this first work of the PARADIGM project describes a new multiscale morphological analysis and applies it to a sample of four U/LIRGs. With this application, we show how the observations from the SKA pathfinders, VLA and  $e$ -MERLIN, are relevant to disentangle different physical components in the nuclear regions of these galaxies.

### 2.2 The LIRGI sample as a case study

As a part of the  $e$ -MERLIN Legacy Project, the LIRG Inventory (LIRGI, Conway & Pérez-Torres 2008) studies a northern subset of the Great Observatories All-sky LIRG Survey sample (Armus et al. 2009) selected from The *Infrared Astronomical Satellite* (IRAS) Revised Bright Galaxy Sample (Sanders et al. 2003). It comprises a representative sample of 33 LIRGs and 9 ULIRGs in the local Universe over a distance range from  $\sim 60$  to  $\sim 260$  Mpc. Most of these sources are merging/interacting systems, ranging from a merger stage of 0 (early stage merger) to 6 (final stage merger, classification of Haan et al. 2011; Kim et al. 2013), but a few are spiral galaxies undergoing high SF activity. SFRs in these systems span a range from 10 up to  $\sim 400 M_\odot \text{ yr}^{-1}$ .

Several sources from the LIRGI sample have been studied individually, such as Arp 299 (Pérez-Torres et al. 2009; Romero-Cañizales et al. 2011; Bondi et al. 2012; Ramírez-Olivencia et al. 2022), Arp 220 (Barcos-Muñoz et al. 2015; Varenus et al. 2016), and additionally UGC 8387 (Modica et al. 2012; Romero-Cañizales et al. 2012b, 2017), IRAS 23365 + 3604 (Romero-Cañizales, Pérez-Torres & Alberdi 2012a), UGC 5101 (Lonsdale et al. 2003), UGC 8696 (Carilli & Taylor 2000; Klöckner & Baan 2004; Bondi et al. 2005), among

**Table 1.** Existing source information from literature.

Source (1)	RA <sup>†</sup> (J2000.0) (2)	Dec. <sup>†</sup> (J2000.0) (3)	log <sub>10</sub> (L <sub>IR</sub> /L <sub>⊙</sub> ) (4)	D <sub>l</sub> [Mpc] (5)	M <sub>s</sub> (6)	n <sub>c</sub> [kpc] (7)	q <sub>IR</sub> (8)	S <sub>ν</sub> <sup>C band</sup> [mJy] (9)	Morphology (10)
UGC 5101	09h35m51.599s	+ 61d21m11.72s	11.97	179.27	5	0.44	1.99	61.5 ~ 79.0	AGN/SB
VV 705 N	15h18m06.115s	+ 42d44m45.06s	11.89	183.12	4	6.26	2.35	19.6 ~ 32.0	AGN/SB
... S	15h18m06.328s	+ 42d44m38.11s					–		?
UGC 8696 N	13h44m42.130s	+ 55d53m13.50s	12.14	169.78	5	0.77	2.27	60.3 ~ 103.0	SB
... SE	13h44m42.179s	+ 55d53m12.79s					–		AGN
VV 250 SE	13h15m34.954s	+ 62d07m28.80s	11.77	140.58	2	42.48	2.39	19.6	HII
... NW	13h15m30.676s	+ 62d07m45.40s					–		?

*Notes.* Column description: (1) system name, with right ascension in (2) and declination in (3). (4) Log of the IR luminosity in terms of solar luminosities. (5) Luminosity distance. (6) Merger stage from Haan et al. (2011) and Kim et al. (2013). (7) Nuclear separation between featured radio sources in each system. (8) Radio to IR  $q$  factor (Yun, Reddy & Condon 2001). (9) The range of total flux densities (for the full system) measured at C band (4–6 GHz) from the NASA/IPAC Extragalactic Database. The exception is VV 250, which contains a single measurement. (10) The radio morphology. <sup>†</sup> Coordinates refers to the peak brightness position in the main component of the source (see Figs 2 and 3).

others (see Pérez-Torres et al. 2021, for a review). These studies show how the central and obscured AGN/SB influences the SF in these galaxies and the possible causes that an AGN is turned on. When it comes to general studies of (massive) SF activity in galaxies, Linden et al. (2017, 2019, 2020) explored the multifrequency nature of the SF in both nuclear and extranuclear regions and Larson et al. (2020) investigate how SF clumps are formed in LIRGs.

The main goals of the Legacy Project focuses on accessing the SF histories and galaxy assembly of local U/LIRGs using high-resolution observations. Equivalent, understand how well the RC emission is converted to SFRs, without the contamination from an AGN. To that end, specific goals are to (i) quantify the morphology and size of radio emission associated to SF, including diffuse and compact nuclear SF (SB); (ii) detect powerful core-collapse radio supernovae (RSNe), used to constrain the high-mass SF; (iii) characterize the existence and morphology of AGNs in these systems; (iv) study the relations between SF, AGN accretion, and feedback mechanisms, quantifying how the energy/material flow at the nuclear regions of U/LIRGs.

### 3 OBSERVATIONS, DATA CALIBRATION, AND IMAGING

In this work, we set up an initial study for a subset of the LIRGI sample (see Table 1) and demonstrate a methodology that will be used later for the entire LIRGI sample, to study the full structure of the radio emission. Our subsample was selected by inspecting existing C-band VLA archival data, allowing immediate combination with recent *e*-MERLIN observations at the same frequency (see Table 2). The systems are, the two LIRGs VV 705 (N and S), VV 250 (SE and NW), and the two U/LIRGs UGC 5101 and UGC 8696 (N and SE). Details of these candidates can be found in Appendix A. We have followed these criteria to select the candidates:

(i) *physical*: these sources show evidence of extreme condition environments in radio and IR, having relatively high SF activity ( $> 50 M_{\odot} \text{ yr}^{-1}$ ) occurring both in the central parts and in their diffuse components;

(ii) *technical*: existing archival data at C band (6 GHz) in the VLA-A configuration ( $\sim 0.3$  arcsec angular resolution) to map the major fraction of their extended emission (when existent) in combination with current *e*-MERLIN observations to resolve their nuclear regions (at  $\sim 0.05$  arcsec).

These sources contain varied radio structural properties, hence we can experiment with how our approach performs in decomposing their radio emission from core-compact (AGN or SB) structures, nuclear diffuse emission at  $\sim 100$  pc scales and emission originated from large-scale extended star-forming regions with scales greater than  $\sim 1$  kpc.

#### 3.1 *e*-MERLIN and VLA observations

We use VLA and *e*-MERLIN observations at  $\sim 6$  GHz (C band) to conduct a multiscale study of the nuclear and diffuse radio emission of four systems from LIRGI. At this frequency, the angular resolutions of the two interferometers are 0.05 and 0.33 arcsec for *e*-MERLIN and VLA, respectively. Equivalently, for a source at 150 Mpc, the physical scales of these angular resolutions would be  $\sim 36$  and  $\sim 240$  pc, respectively. A summary of the observational data and their related projects from VLA and *e*-MERLIN archives is presented in Table 2.

The *e*-MERLIN observations at 6 GHz were observed between 2019 and 2020. They comprise about  $\sim 370$  h in total, for the 42 sources, giving an average time on source of  $\sim 8.8$  h. The total bandwidth is of about 1.5–2.0 GHz, and the average sensitivity provided is  $\sim 10$ – $20 \mu\text{Jy beam}^{-1}$  at C band.

We use VLA archival data on the most extended VLA configuration (A) in order to achieve the highest angular resolution provided by the array (which baseline lengths up to  $\sim 37$  km). We have acquired the data from NRAO archive for our four sources, with observational dates between 2011 and 2019. The average sensitivity of the data is  $10 \mu\text{Jy}$  for a 30-min on-source time. However, the project archive list we are using spans an on-source time between 20 min to 1 h.

#### 3.2 Data calibration

##### 3.2.1 Flagging, calibration, and averaging

We have calibrated VLA data using the CASA software (v6.2, McMullin et al. 2007; The CASA Team et al. 2022), adopting standard procedures from the EVLA pipeline (6.2) guidelines. For the *e*-MERLIN data, the *e*-MERLIN CASA Pipeline (v1.1.19) was used (Moldon 2021),<sup>1</sup> with CASA (v5.7).

<sup>1</sup>See more information on the *e*-MERLIN CASA Pipeline page at [https://github.com/e-merlin/eMERLIN.CASA\\_pipeline](https://github.com/e-merlin/eMERLIN.CASA_pipeline).

**Table 2.** Observational data information for VLA and *e*-MERLIN at C band ( $\sim 6$  GHz).

Source	Project code	Phase/flux and bandpass calibrators	Obs date	Time on source [h]	Central freq. [GHz]	Freq. range [GHz]	SPWs/ Channels
UGC 5101	EVLA 19A-076	J0921 + 6215/3C48	09.16.19–10.20.19	0.7*	5.1	4.1–6.2	19/128
	<i>e</i> -M LE1014-L14	–	10.12.19	8.8	5.1	4.2–6.0	8/512
VV 705	EVLA 19A-277	J1549 + 5038/3C286	10.08.19	1.0	6.0	4.1–7.9	36/64
	<i>e</i> -M LE1014-L26	–	03.15.20	8.8	5.2	4.5–5.8	8/512
UGC 8696	EVLA AL746	J1349 + 5341/3C286	06.21.11–07.01.11	0.4	5.9	4.2–7.6	16/128
	<i>e</i> -M LE1014-L24	J1337 + 5501/3C286	10.07.20–03.13.20	26.4	5.2	4.2–6.2	8/512
VV 250	EVLA AL746	J1339 + 6328/3C286	06.21.11–07.01.11	0.4	5.9	4.2–7.6	16/128
	<i>e</i> -M LE1014-L21	–	12.27.19	8.8	5.2	4.2–6.2	8/512

*Note.* \*Between the nine epochs, only a single one was used.

**Table 3.** Template of solution intervals used during calibration of VLA data using the phase reference sources.

Project	Shorter solint (p)	Solint long (p and ap)
AL746	48 s	60s,inf
19A-277	16 s	60s,inf
19A-076	16 s	60s,inf

The basic steps of the calibration are summarized as:

- (i) Standard pre-flagging of the data (e.g. observational flags, shadowing, clipping, and quack).
- (ii) Visual inspections of each visibility in order to look for bad data, RFIs, antenna issues, and others.
- (iii) Different steps of autoflagging, using `tfcrop` prior to calibration and `rflag` after calibration:
  - (a) A first pass of `tfcrop` was applied after pre-flagging (before any pre-calibration step) since this method is suitable for uncalibrated data.
  - (b) When pre-calibration was established and applied, we performed a first-pass of `rflag` on the pre-calibrated data.
  - (c) After achieving the final calibration tables and applied to the data, we performed another pass of `rflag`, including also the target fields.
- (iv) If new issues or bad data are identified in the final calibrated data, they are appended to the manual flagging file and the calibration is performed again from start.

Since on average VLA observations contain 128 channels, we consider averaging our *e*-MERLIN data in frequency, from 512 channels to 128. We use this averaged data to conduct all phase-referencing calibration through the *e*-MERLIN pipeline. We reserve spectral line analysis for a future work. For the VLA data, we use the native spectral and temporal resolution of each observation to perform phase-referencing calibration. During calibration of VLA data, we considered trying three different shorter solutions intervals to correct the more rapid phase variations, named `solint_short` = 16s, `solint_mid` = 32s, and `solint_long` = 48s. The calibration tables were inspected in order to check which one performed better and flagged fewer data, given that the signal-to-noise ratio in each observation is different. We also combined these solutions with a longer solution interval of 60s and a final `solint_inf` = `inf` solution interval to calibrate scan-related offsets in phase and amplitude. For project AL746, the longer shorter solution interval worked better, while for 19A-076 and 19A-277, the shorter one was more suitable. For reference, see Table 3.

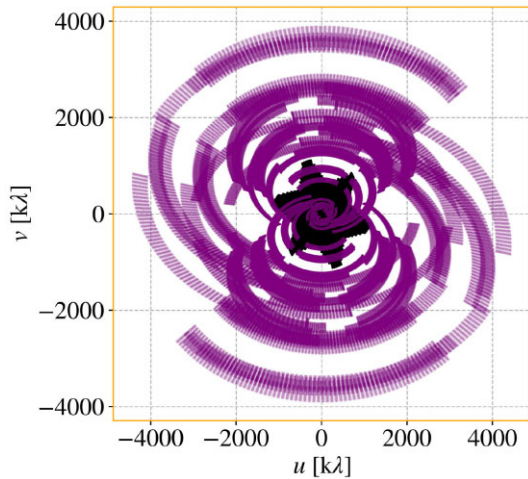
### 3.2.2 Self-calibration

After having achieved the desired calibration of each observation in both instruments, we prepared the data for self-calibration. Further time averaging is done up to a factor of two of the integration time for *e*-MERLIN, down to 8 s. We do this because there are no concerns related to time smearing and frequency aliasing since all our sources are near the phase pointing centre. We also averaged the VLA data in time up to 8 s to match with our *e*-MERLIN observations. A summary of the observation properties is given in Table 2.

We conducted self-calibration individually for VLA, *e*-MERLIN and combined data (see below). Different steps of self-calibration were performed for each source because of the nature of their structures, observational setups, and phase-referencing quality. To image the data, we used the CASA task `TCLEAN`. To account for the intrinsic spectral index, we have used the `mtmfs` deconvolver with three Taylor terms (`nterms` = 3), in combination with the `multiscale` deconvolver (Rau & Cornwell 2011), enabling it by setting different scales, that is, `scales` = [0, 2, 4, 8, 16, 32, 64]. This is required since we consider that, in general, sources have extended emission. The masking during deconvolution was created manually (setting `iterative` = `True` and `usemask` = `'user'` in `TCLEAN`).

We have used a standard initial number of steps for self-calibration: `1:phase` + `2:phase` + `3:phase`. When possible, having enough flux density for an amplitude self-calibration, we applied `1:phase` + `2:phase` + `3:amp/phase`. This is the first attempt to improve data quality. However, for sources UGC 8696 and UGC 5101 involving VLA data, we had to perform additional steps of phase-self-calibration, decreasing the solution interval each time in order to achieve higher image fidelity. Where required, we also considered combining polarizations (in `gaincal`, by setting `gaintype` = `'T'`) to improve the signal-to-noise ratio of the solutions. In each case, in the first self-calibration iteration, we considered a lower Briggs robust parameter (e.g. `-0.5` or `0.0`, depending on how bright the source is), so that only the most compact emission is used in the first loop. In the subsequent iterations, a higher robust parameter was considered (e.g. `0.5`–`2.0`), to account for more diffuse structures.

After the self-calibration step, we estimate the average rms-based value of each visibility weight, labelled  $\mathbf{w}^{\text{VLA}}$  and  $\mathbf{w}^{\text{eM}}$  for VLA and *e*-MERLIN, respectively. We have used the task `statwt` in CASA, with the default parameter options. These weights are used for data combination in Section 3.2.3. Finally, after performing all the data calibration steps, the amount of data flagged for sources within project AL746 was  $\sim 40$  per cent, while for 19A-277 (VV 705) it was  $\sim 37$  per cent and 15 per cent for 19A-076 (UGC 5101). For *e*-



**Figure 1.** Typical  $uv$  coverage (e.g. VV 705) with  $e$ -MERLIN ( $\sim 8.8$  h on source) at longer baselines ( $\sim 4000$  k $\lambda$ ) and VLA ( $\sim 1$  h on source) at shorter baselines ( $\sim 1000$  k $\lambda$ ).

MERLIN, the amount of data flagged was 54 per cent for VV 705, 70 per cent for VV 250, 55 per cent for UGC 5101, and 64 per cent for UGC 8696. We report that for the  $e$ -MERLIN observation of VV 250, the high fraction of data flagged was also due to a period during the observation that the source was above an elevation of  $80^\circ$ , so most of the calibration solutions failed.

### 3.2.3 Data combination: $e$ -MERLIN and VLA

Having  $e$ -MERLIN and VLA observations, we can achieve a suitable balance between sensitivity and resolution by combining data between both interferometers. VLA observations in A configuration enable us to fill the short spacing for longer baseline interferometers (e.g. Muxlow et al. 2005; Muxlow et al. 2020; Williams et al. 2019). An example of the  $uv$  coverage for a particular combined visibility is presented in Fig. 1, with  $e$ -MERLIN in purple and VLA in black. As can be seen, the shorter baselines in  $e$ -MERLIN match the longest baselines in VLA and the combination of both arrays provides a smooth transition between scales. Also, both arrays have matching sensitivity, and because of these two factors, it is possible to compute multiple images with different weighting schemes that recover physical structures from small to large scales continuously.

When concatenating the calibrated visibilities with the CASA task `concat`, weight scaling factors  $v_w$  must be multiplied to each visibility via the argument `visweightscale` with the weights  $\mathbf{w}^{\text{VLA}}$  and  $\mathbf{w}^{\text{eM}}$  previously calculated. In this approach, if we impose that both visibilities have the same weight, we require that  $v_w^{\text{VLA}} \mathbf{w}^{\text{VLA}} = v_w^{\text{eM}} \mathbf{w}^{\text{eM}}$ . We can for simplicity keep the  $e$ -MERLIN scaling factor to unity, that is,  $v_w^{\text{eM}} = 1$ , and change the one for VLA accordingly. Therefore, the VLA scaling factor is chosen to satisfy

$$v_w^{\text{VLA}} \times \left( \frac{\mathbf{w}^{\text{eM}}}{\mathbf{w}^{\text{VLA}}} \right)^{-1} = v_w^{\text{eM}} = 1.0 \quad (\text{balanced visibility}), \quad (1)$$

where  $v_w^{\text{VLA}}$  represents a combined visibility with balanced weights between both arrays.

### 3.2.4 Astrometry check

Prior to concatenating the interferometric data, we performed alignment checks and two assumptions were made. We used  $e$ -MERLIN

as the coordinate reference due to its higher resolution and greater positional accuracy (10–20 mas at C band). Moreover, it is important to note that the peak flux location in  $e$ -MERLIN may not align perfectly with that of VLA, so we can not use the peak brightness position for alignment when sources are not point-like structures.

To align the interferometric images, comparing multiple point-like sources is a common approach. However, in our case, there are very few sources in each field, except for VV 250. Hence, we can utilize the phase reference centre of the  $e$ -MERLIN observation and shift the VLA centre to match  $e$ -MERLIN's centre. Furthermore, we can potentially correct significant errors in the phase shift through self-calibration using the combined data by producing a combined model during cleaning.

### 3.2.5 Relative flux density scaling

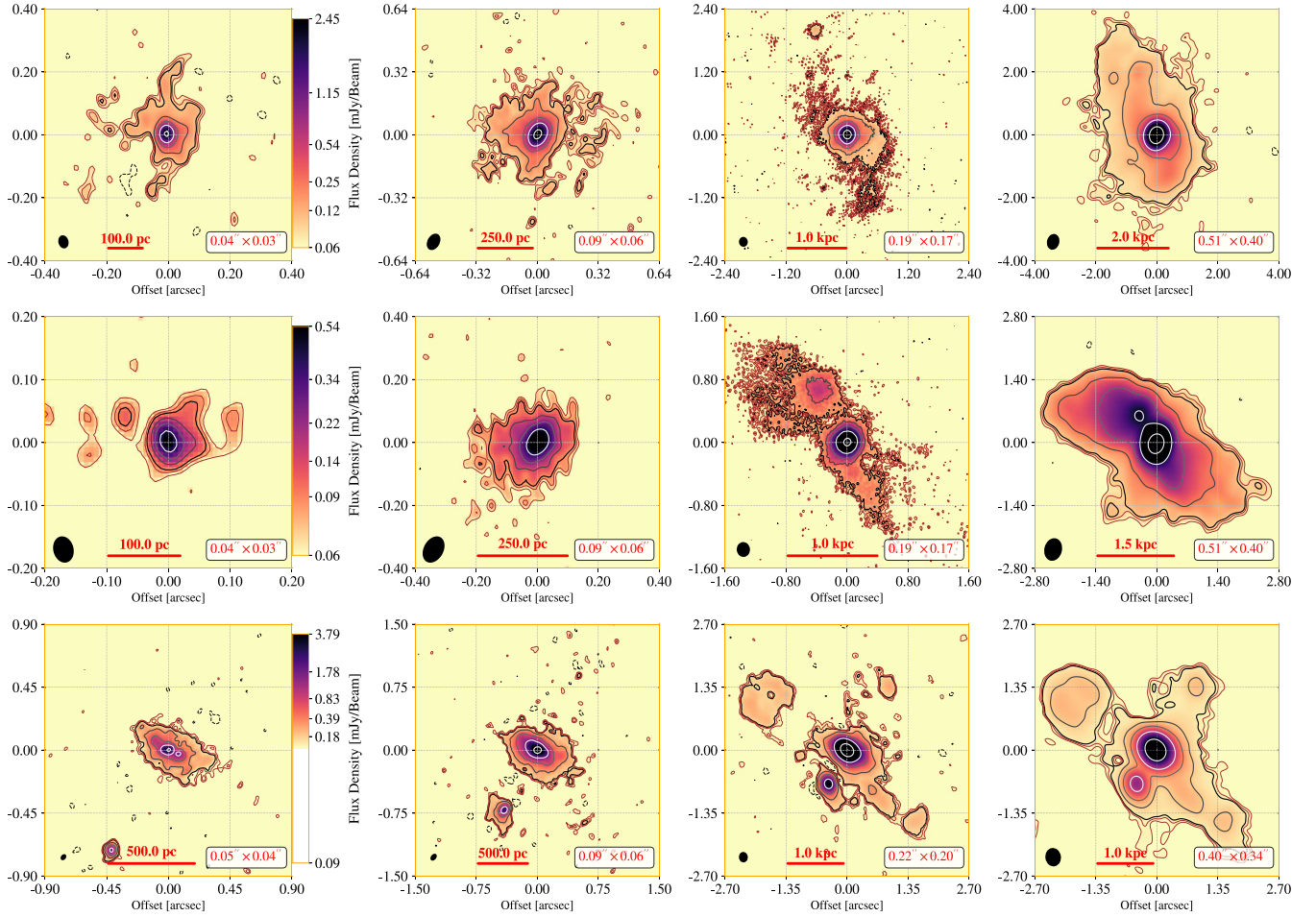
Regarding data combination, additional checks were performed to understand the relative amplitude between  $e$ -MERLIN and VLA. We have plotted the visibilities between both instruments on common baselines in the  $uv$ - $\lambda$  space. The amplitude revealed to be the same. Small corrections were potentially corrected when performing self-calibration in the combined data (usually by an infinite amplitude complex gain correction). If large differences are present (not in our four cases), relative scaling factors must be enforced to the data to correct the differences, since self-calibration will not correct for such large differences.

## 3.3 Imaging and gridding weights

Final image products were produced using the WSCLEAN algorithm (v3.1.0), a  $w$ -stacking fast imager. After combining the data, we used two weighting schemes during imaging, by changing the deconvolution gridding weights or by applying  $uv$  tapering. In the first case, on-the-fly weighting imaging can be changed with the Briggs `robust` parameter (Briggs 1995) in CASA or WSCLEAN. For each combined interferometric data (having similar visibility weights, equation 1), we generated a series of images by varying the Briggs robust parameter between  $-1.5$  and  $2.0$ . Lower values yielded predominantly  $e$ -MERLIN characteristics (compact emission), while values above zero trended towards VLA features (unresolved and extended emission). We also individually imaged pure  $e$ -MERLIN and VLA visibilities with typical robust parameters of  $0.0$ ,  $0.5$  and  $2.0$ .

In order to account for flux density systematics due to the point spread function (PSF) effects during deconvolution of combined interferometric data, we follow the solutions discussed in Radcliffe et al. (2024) and Radcliffe (private communication). With WSCLEAN, we configure the deconvolution by setting the options `-auto-threshold` and `-auto-masking` to values  $0.01$  and  $3.0$ , respectively. In the particular cases of VV 250 and UGC 8696, we also considered the use of  $uv$  tapering, which we discuss individually in Appendix A.

For standard Stoke  $I$  continuum imaging, we have used only RR and LL correlations for imaging the combined data. With WSCLEAN, we have used the multiscale deconvolver (Rau & Cornwell 2011) with scales  $[0, 2, 4, 8, 16, 32, 64]$ , setting both the `--multiscale-gain` and `--gain` parameters to  $0.05$ . In WSCLEAN, the multifrequency synthesis is enabled by cleaning channels jointly, which takes into account the spectral variation of the sky. The arguments for this mode are `-join-channels -channels-out nc`, where `nc` is the number of sub-band images to be used, each one at a different frequency (for more details, see Offringa



**Figure 2.** Radio emission from VV705 (VV 705 N on top row and VV 705 S on middle row) and UGC 8696 (third row) obtained with *e*-MERLIN and VLA interferometric data. The first column on the left is a pure *e*-MERLIN cleaned image, while the last on the right is a pure VLA cleaned image. The two images in between were created by using different weights during deconvolution. The solid grey contours (white to black) are created automatically with a geometric progression in log scale, from the peak to  $5 \times \sigma_{\text{mad}}$ . The brown continuum contours represent the low-level emission, at  $4\sigma_{\text{mad}}$  and  $3\sigma_{\text{mad}}$ , respectively, and the black dashed lines are the negative contours at  $-3\sigma_{\text{mad}}$ . The beam shape is represented by the black ellipse or additionally, in case of being too small, by the label (as  $\theta_{\text{maj}} \times \theta_{\text{min}}$ ) in arcsec.

et al. 2014; Offringa & Smirnov 2017).<sup>2</sup> We do not use these spectral images in this work nor perform spectral index analysis, hence we leave this for a future study. However, the final synthesized image, which is a result of an interpolation between these spectral images, contains the spectral information on it. Furthermore, spectral information was also considered during self-calibration with CASA, when the visibilities were imaged with the *mtmfs* deconvolver (Rau & Cornwell 2011). Additionally, since our systems are near the field pointing centre, no direction-dependent corrections were applied to our data, and also, we did not apply primary beam corrections. The only source that contained a bright outlier source far from the pointing centre, that could affect imaging, was VV 250, about 100 arcsec. We imaged the entire area for this observation.

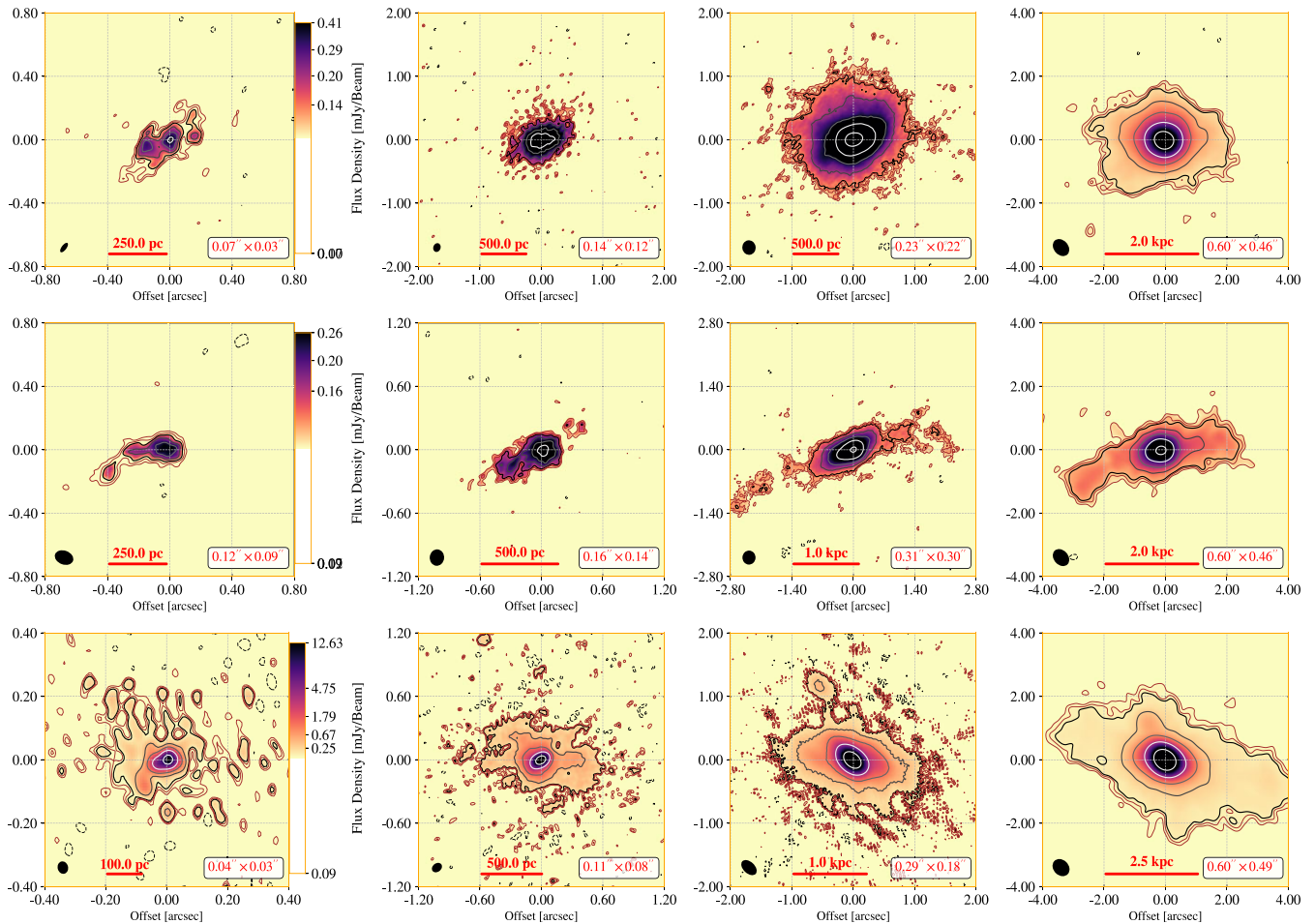
### 3.4 Imaging results: the multiscale structure of radio emission

In Fig. 2, we present a grid of multiscale images of VV 705 (N and S components) and UGC 8696 (all components), and in Fig. 3 of

VV 250 (SE and NW) and UGC 5101. These images were produced by using different weighting schemes on combined interferometric data and also individual *e*-MERLIN and VLA data. The first column on the left side displays the radio emission as seen by *e*-MERLIN, by which we use as a probe of core-compact components and nuclear diffuse emission. On the right side, we have pure VLA images, which are the maps we use to quantify the radio emission that it is extended in nature (after removing the contamination from core-compact structures). The two middle images are the combined images (simply labelled by two different weights,  $w_1$  and  $w_2$ ) representing the radio emission on intermediate angular/linear scales. They capture the variation of the radio emission when balancing sensitivity against resolution.

Each image has a different field of view, we decided to keep in this way for better representation of the radio emission on different scales. Therefore, note that we display distinct angular offsets in each panel, according to coordinates of the peak brightness listed in Table 1. The scale bar also informs the brightness intensity scale of the maps, distinct for each panel. The restoring beam is also indicated in the bottom of each panel (by a black ellipsis alongside of a label). Basic properties of these radio maps are listed in Table 4. In each

<sup>2</sup>See <https://ws-clean.readthedocs.io/en/latest/index.html>.



**Figure 3.** The same as Fig. 2, but for the other sources: from top to bottom rows, VV 250 SE, VV 250 NW, and UGC 5101. Notes: For VV 250 NW, the  $e$ -MERLIN emission was only recovered by using a sky taper of 0.025 arcsec, with a robustness parameter of 2.0.

block property, the quantities are calculated for each image in the same order they appear in Figs 2 and 3: for  $e$ -MERLIN images, combined images  $w_1$ ,  $w_2$ , and VLA images.

The structure of these systems is distinct at every spatial scale, and valuable information can be obtained by using appropriate instruments that both resolve their nuclear regions and are sensitive enough to map the large-scale extended emission. Therefore, it would be essential to have a methodology capable of combining multiscale information to characterise their diversified structures, as illustrated in Figs 2 and 3. Thus, it allows us to connect their physical and morphological properties such as component positions, sizes, associated flux densities and SFRs at each scale.

#### 4 ANALYSING THE MULTISCALE STRUCTURE OF RADIO EMISSION

The structure of the radio emission changes significantly across different linear scales (Figs 2 and 3). A feasible way to differentiate the total radio power of the source in relation to core-compact components (i.e. AGN/SB nuclei) is to combine interferometric data and compare higher resolution images ( $e$ -MERLIN) with lower resolution, sensitive radio maps (e.g. VLA). We see in these maps clearly that, as the sensitivity of large-scale structures increases, the diffuse emission becomes more evident, shaping the radio morphology of the source. Therefore, with combined data, our objectives are to

- (i) disentangle the core-compact flux from the extended flux in order to account for their contributions to the total flux density and SFRs;
- (ii) determine the relative sizes of nuclear regions (core-compact structures, nuclear discs, etc.) and the sizes of large-scale extended components;
- (iii) and analyse the radio emission for each relevant subregion/component individually.

To achieve our goals, we use similar image fitting techniques from optical studies that disentangle structural components from imaging data. However, we recognize that radio emission is complex in nature and presents challenges to be characterized (e.g. Calabrò et al. 2019b; Panessa et al. 2019; Pérez-Torres et al. 2021). Decoupling the fraction of luminosity from core-compact structures such as AGN or SB regions in relation to the diffuse surrounding radiation, generated by intense SF activity or radio jets, is nevertheless challenging (e.g. Barcos-Muñoz et al. 2017; Mancuso et al. 2017; Magliocchetti 2022). However, by successfully doing so, one can characterize the effect and influence that the AGN/SB has over the physics of the source, and hence compute what is the total contribution to the radio power that SF has, from small to large physical scales. Additionally, we reiterate that in this work we do not distinguish AGN from SB components due to data limitation, since these two structures have similar angular

**Table 4.** Basic source and observational RC properties derived from the data.

Source	Image	$S_\nu$ [mJy]	$S_{\text{peak}}$ [ $\mu\text{Jy beam}^{-1}$ ]	$\theta_a \times \theta_b$ [arcsec]	$\sigma_{\text{mad}}$ [ $\mu\text{Jy beam}^{-1}$ ]
(1)	(2)	(3)	(4)	(5)	(6)
VV 705 N	<i>e</i> -MERLIN	$6.0 \pm 1.3$	2.4	$0.04 \times 0.03$	18.6
	$w_1$	$7.5 \pm 1.0$	2.9	$0.09 \times 0.06$	14.9
	$w_2$	$10.2 \pm 0.4$	4.1	$0.19 \times 0.17$	8.1
	VLA	$12.7 \pm 0.2$	6.4	$0.51 \times 0.40$	3.3
VV 705 S	<i>e</i> -MERLIN	$1.2 \pm 0.3$	0.5	$0.04 \times 0.03$	18.4
	$w_1$	$1.8 \pm 0.4$	0.7	$0.09 \times 0.06$	14.9
	$w_2$	$4.5 \pm 0.7$	1.2	$0.19 \times 0.17$	8.0
	VLA	$6.2 \pm 0.2$	2.0	$0.51 \times 0.40$	3.5
UGC 5101	<i>e</i> -MERLIN	$37.3 \pm 5.5$	12.6	$0.04 \times 0.03$	31.6
	$w_1$	$54.9 \pm 3.4$	21.3	$0.11 \times 0.08$	26.2
	$w_2$	$58.5 \pm 1.1$	29.0	$0.29 \times 0.18$	14.2
	VLA	$60.5 \pm 0.5$	41.7	$0.60 \times 0.49$	8.8
UGC 8696	<i>e</i> -MERLIN	$40.9 \pm 7.1$	5.2	$0.05 \times 0.04$	66.0
	$w_1$	$47.2 \pm 2.6$	6.5	$0.09 \times 0.06$	15.4
	$w_2$	$51.4 \pm 1.4$	17.4	$0.22 \times 0.20$	10.1
	VLA	$53.3 \pm 0.8$	26.9	$0.40 \times 0.34$	8.8
VV 250 SE	<i>e</i> -MERLIN	$5.6 \pm 0.9$	0.4	$0.07 \times 0.03$	24.2
	$w_1$	$13.3 \pm 1.7$	1.5	$0.14 \times 0.12$	29.4
	$w_2$	$16.8 \pm 0.9$	3.2	$0.23 \times 0.22$	11.0
	VLA	$17.9 \pm 0.5$	7.5	$0.60 \times 0.46$	7.6
VV 250 NW	<i>e</i> -MERLIN	$1.4 \pm 0.3$	0.2	$0.12 \times 0.09$	24.5
	$w_1$	$1.7 \pm 0.4$	0.4	$0.16 \times 0.14$	22.2
	$w_2$	$2.5 \pm 0.3$	0.8	$0.23 \times 0.22$	7.4
	VLA	$3.3 \pm 0.4$	1.2	$0.60 \times 0.46$	7.1

*Notes.* This table presents: (1) source name. (2) From which image the measurement was made. (3) The total continuum integrated flux density  $S_\nu$  in mJy, here at C band ( $\sim 5\text{--}6$  GHz). For simplicity, we have not corrected  $S_\nu$  for the spectral variation of the flux density from 5 to 6 GHz, given that each observation is centred at a different frequency in that range, see Table 1. (4) The peak brightness flux density  $S_{\text{peak}}$ , in  $\mu\text{Jy beam}^{-1}$ . (5) The restoring beam size, in arcsec. (6) The median absolute standard deviation noise level ( $\sigma_{\text{mad}}$ ), in  $\mu\text{Jy beam}^{-1}$ , measured in each image’s residual map. These values were computed for each source, for four different images (as indicated by column 2). These images are presented in Figs 2 and 3. (i) For UGC 5101 and UGC 8696, since the nuclear separation between the subcomponents are small, we display these flux densities for the total emission. (ii) Errors for  $S_\nu$  are only statistical, computed in the convolved residual map, inside the masked region of the source (see equation 3).

sizes when unresolved, typically on scales  $\lesssim 5\text{--}10$  pc (unresolved by *e*-MERLIN in our sample).

With the novel fitting method presented here (see below), we can uncover physical information from the radio emission that was previously inaccessible. This process can be further refined by utilizing multiwavelength observations in conjunction with complementary  $uv$  coverage. The full scope of our method’s applicability extends beyond the objectives of this paper and will be addressed in future publications.

#### 4.1 Quantifying flux densities estimates

To robustly estimate flux densities, we use a general approach based on a mask dilation technique (morphological transformation, Serra 1984). Consider Fig. D1 as an example. First, only a portion of the emission is selected, above a certain threshold level  $\sigma$ . Secondly, the mask is dilated to account for more low-level emission in the vicinity of that region. This allows to catch the faint diffuse emission encompassing the source. To measure  $\sigma$ , we adopt a robust approach through the standard deviation based on the median absolute deviation (MAD; Astropy Collaboration 2022):

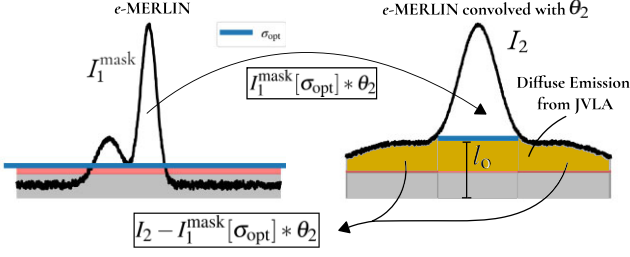
$$\sigma_{\text{mad}} = \frac{\text{MAD}}{\Phi^{-1}(3/4)} \approx 1.48 \text{ MAD}, \quad \text{MAD} = \text{med}\{|h_i - \text{med}(h)|\}, \quad (2)$$

where  $\Phi^{-1}(3/4)$  is the normal inverse cumulative distribution with probability  $3/4$ , and  $h$  is a generic variable with discrete values  $h_i$  and median  $\text{med}(h)$ . We made a number of tests and a suitable mask is achieved when considering emission within  $6 \times \sigma_{\text{mad}}$ . The transformation requires a dilation size which is naturally defined to be half of the averaged size of the restoring beam of the image, that is,  $\sqrt{\theta_{\text{maj}} \times \theta_{\text{min}}}/2$ , in pixels. The total expansion of a region is a unity of the beam size. All contour levels on our images presented in this work are created using multiples of  $\sigma_{\text{mad}}$ .

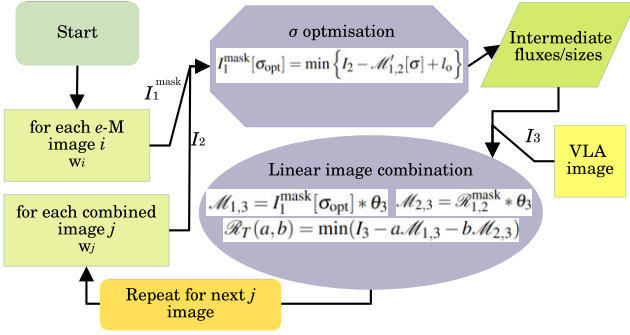
Flux density errors are estimated over the residual maps generated during cleaning with WSCLEAN. The residual flux density is computed using the same mask that was discussed previously, by computing the sum of all pixels inside the mask. The error based on the root mean square of the residual map  $\varepsilon_{\text{rms}}$  within the area of emission is defined as

$$\varepsilon_{\text{rms}} = \sqrt{\sum_{ij} (R_{ij} * \text{mask}_{ij} - \langle R_{\text{mask}} \rangle)^2} \times \frac{\sqrt{\text{mask}_A}}{\mathfrak{B}_A} \quad [\text{Jy}], \quad (3)$$

with:  $\text{mask}_A$  being the total dilated mask area (in pixels square) where the flux is computed;  $R_{ij}$  is the pixel intensity value of the residual map at position  $i, j$ , in units of  $\text{Jy beam}^{-1}$ ;  $\langle R_{\text{mask}} \rangle$  is the mean of the residual inside the mask, in units of  $\text{Jy beam}^{-1}$ ; and  $\mathfrak{B}_A$  is the restoring beam area, in pixel square, used to convert the sum to Jy.



**Figure 4.** A representation of how the interferometric decomposition works. The black line represents the 1D slice of a surface brightness distribution: the left one is a pure *e*-MERLIN and the right one is a combination between *e*-MERLIN and VLA. The grey-shaded area represents the background noise level, and the blue horizontal line is the selection of the optimized threshold. On the right, the offset  $l_0$  is linked to the amount of *e*-MERLIN flux that should be convolved ( $*$ ) with  $\theta_2$  to produce a map having the large-scale diffuse emission only, which is represented by the orange-shaded area. Therefore, the optimization works in the following way: on the left, the blue horizontal line is moved up and down to put the blue horizontal line on the right on the same level (or at least close) to the level of the diffuse emission. The red line on the left highlights the  $5\sigma$  minimum limit that we assume during the minimization so that noise/uncertain flux is not included.



**Figure 5.** Flowchart showing the iterative process of the interferometric decomposition. See also Figs 4 and 6.

Results for flux densities and associated errors for the representative maps presented in Figs 2 and 3 are provided in Table 4. Results are shown separately for pure *e*-MERLIN and VLA images, as well as combined images (denoted by weights  $w_1$  and  $w_2$ ).

## 4.2 Interferometric decomposition

Consider Figs 4–6, and let  $I_1$  be a pure *e*-MERLIN image,  $I_2$  a combined cleaned image between VLA and *e*-MERLIN, and  $I_3$  a pure VLA image. Also, consider that the restoring beams for each image are  $\theta_1$ ,  $\theta_2$ , and  $\theta_3$ , respectively, where  $\theta_1 < \theta_2 < \theta_3$ . Whilst the emission is being observed by a larger beam ( $\theta_2$  or  $\theta_3$ ), we can still simulate how the higher resolution emission ( $\theta_1$ ) downscales by convolving it with  $\theta_2$  (or  $\theta_3$ ). To estimate the fraction of extended emission in a lower resolution map in relation to *e*-MERLIN, one can convolve  $I_1$  with  $\theta_2$  and remove the result from  $I_2$  (see Fig. 4). Mathematically, this is expressed as

$$\mathcal{M}_{1,2} = I_1^{\text{mask}}[\sigma_{\text{opt}}] * \theta_2, \quad (4)$$

$$\mathcal{R}_{1,2} = I_2 - \mathcal{M}_{1,2}. \quad (5)$$

In the above equation, ‘ $*$ ’ stands for a convolution, and  $\mathcal{R}_{1,2}$  is a residual map containing the extended emission on intermediate

scales. The quantity  $\mathcal{M}_{1,2}$  is the convolution result of a masked *e*-MERLIN emission with  $\theta_2$ . This involves an optimization process to select only trusted emission, so that noisy information is not propagated over the convolution:

$$I_1^{\text{mask}}[\sigma_{\text{opt}}] = \min \{ I_2 - \mathcal{M}_{1,2}[\sigma] + l_0 \}. \quad (6)$$

In the above equation,  $\sigma_{\text{opt}}$  is the optimized standard deviation level of the *e*-MERLIN emission that is selected to be convolved with  $\theta_2$  (third upper panel in Fig. 6) and removed from the lower resolution map, minimizing negative residuals (fourth upper panel in Fig. 6) through the offset parameter  $l_0$ . The emission level after subtraction is controlled with  $l_0$  (see Fig. 4), and a good compromise for convergence is  $l_0 = \frac{1}{2} \times \text{std}(I_2^{\text{mask}})$ . For this case, we must use the traditional standard deviation, which takes into account the relative amplitude of the signal. We also impose a minimum limit to  $\sigma$ ,  $\sigma_{\text{min}} = 5.0$ , to avoid including significant low-level emission that is uncertain or noisy. A chart of these steps is presented in Fig. 5. It is an iterative procedure that can be performed, in principle, by any pair of interferometric images with distinct resolutions, matching baselines and sensitivities.

Now, consider the pure VLA image  $I_3$  (where  $\theta_3 > \theta_2$ ) and again the flowchart in Fig. 5. Since  $I_2$  (and  $\mathcal{R}_{1,2}$ ) are at an intermediate resolution, containing partial information of the extended emission, they are not capturing the full size of the emission. We can apply the same procedure as previously but taking  $\mathcal{R}_{1,2}$  as the high-resolution emission to be convolved with the restoring beam of  $I_3$ . This example is given in the lower left panel of Fig. 6.

The simplest case of a composite radio emission is defined by a compact/unresolved and an extended component (in a generic scale). When modelling these, one can assume that the total model is a linear combination between the extended part with the compact/unresolved parts.<sup>3</sup> In this way, we can write

$$\mathcal{R}_T(a, b) = \min(I_3 - a\mathcal{M}_{1,3} - b\mathcal{M}_{2,3}). \quad (7)$$

where  $a$  and  $b$  are the coefficients of the linear combination used to minimize the residual on the pure VLA emission.  $\mathcal{M}_{1,3}$  and  $\mathcal{M}_{2,3}$  have similar definitions as  $\mathcal{M}_{1,2}$ :

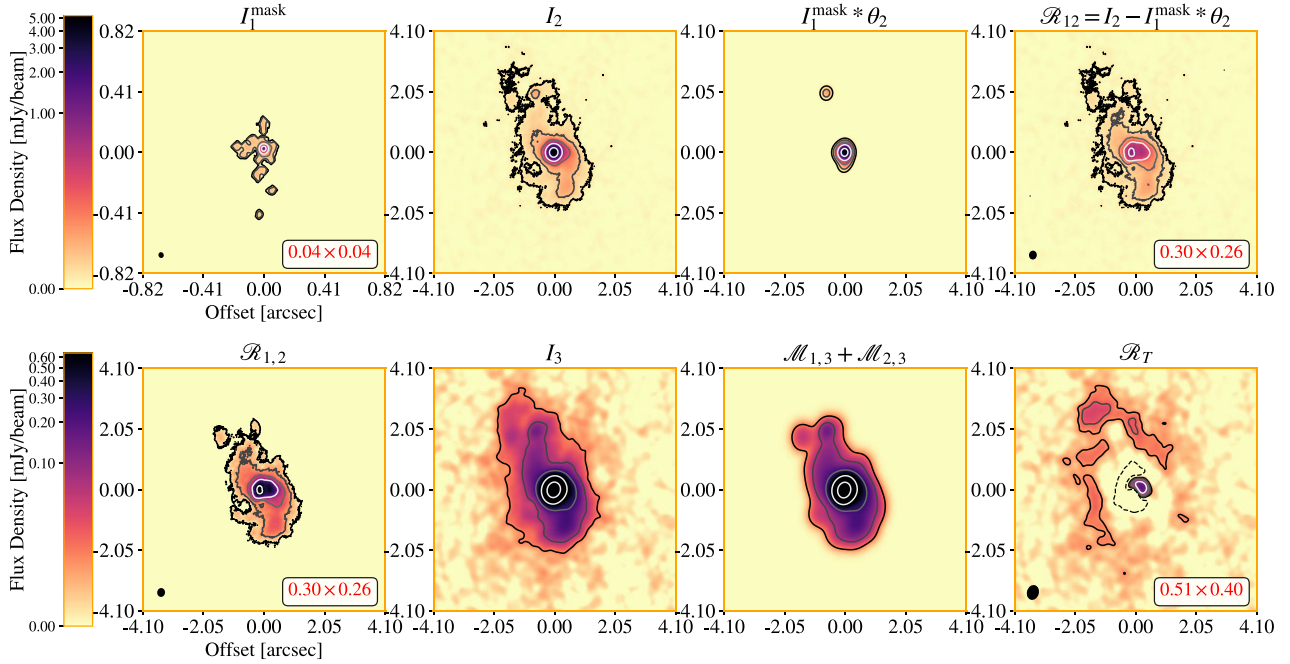
$$\mathcal{M}_{1,3} = I_1^{\text{mask}}[\sigma_{\text{opt}}] * \theta_3, \quad \mathcal{M}_{2,3} = \mathcal{R}_{1,2}^{\text{mask}} * \theta_3. \quad (8)$$

The quantity  $\mathcal{R}_T$  represents the total VLA residual map of the emission, which can still contain significant emission, depending on which previous combined image ( $I_2$ ) was used to perform the decomposition. Still, we can use this extended residual emission to correct for the total flux density which was not printed in  $\mathcal{R}_{1,2}$ , therefore getting the full morphology of the most extended emission (see  $\mathcal{R}_T$  in the lower right panel of Fig. 6). Further, we note that  $\mathcal{R}_T(a, b) \sim 0$  when  $\theta_2 \sim \theta_3$ .

To deal with any bias caused by the choice of which image we use to do this decomposition, we use the continuous set of images between *e*-MERLIN and VLA, balancing the trade-off between angular resolution and sensitivity to diffuse emission.

We do this for each *e*-MERLIN image  $I_1$ , iterating over the combined images  $I_2$  mapping intermediate scales in the diffuse and core-compact parts in comparison with a pure VLA image  $I_3$  (see again Fig. 5). Complementing to Fig. 6, we display in Fig. D2, the associated azimuthally averaged intensity profiles of the previously

<sup>3</sup>The same principle is applied when modelling a complex radio structure with multi-Gaussian or multi-Sérsic fitting. Because the total model is simply the linear combination of all individual model subcomponents, see Section 4.3.



**Figure 6.** Multiscale interferometric decomposition to disentangle the nuclear *e*-MERLIN emission from the VLA extended emission. Top row: we have two main images,  $I_1^{\text{mask}}$  on the left, which is the *e*-MERLIN image of VV 705 N (equation 6) with the optimized threshold, and  $I_2$  which is a combined image between VLA and *e*-MERLIN. Hence, the quantity  $\mathcal{M}_{1,2} = I_1^{\text{mask}} * \theta_2$  (equation 4) is removed from  $I_2$  in order to obtain the extended residual emission  $\mathcal{R}_{1,2}$  (equation 5) on the combined image. See Fig. 4. Bottom row: last step of the method (equation 7), where  $\mathcal{R}_{1,2}$  is taken to be the emission to be convolved with a pure VLA beam  $\theta_3$  from  $I_3$ , which results in the map in the third lower panel. Then,  $I_3$  is subtracted from that map, providing the total residual  $\mathcal{R}_T$ . For this example, the values of the linear combination parameters in equation (7) are:  $a = 0.73$  and  $b = 1.02$ .

discussed images. We discuss the results of this method in Section 5.3.

### 4.3 General Sérsic fitting

Modelling the brightness distribution in galaxy astronomical images in order to characterize individual components is a widely adopted technique: in optical studies (Simard et al. 2002; De Jong et al. 2004; de Souza, Gadotti & dos Anjos 2004; Peng et al. 2010; Ferrari, de Carvalho & Trevisan 2015; Gao & Ho 2017; Lucatelli & Ferrari 2019), IR (Gadotti et al. 2007), X-ray (Iwasawa et al. 2011), and radio (Barcos-Muñoz et al. 2015; Hodge et al. 2019; Song et al. 2021). The number of mathematical models is diversified but usually confined to a group of three main functions: Gaussian (Condon 1997; Condon et al. 1998) and multi-Gaussian fitting (e.g. PYBDSF, Mohan & Rafferty 2015; Calabrò et al. 2019a); exponential functions (describing the brightness distribution of discs of spiral and lenticular galaxies, Freeman 1970); and the Sérsic law (Sérsic 1963; Caon, Capaccioli & D’Onofrio 1993; Ciotti & Bertin 1999), a generalization that can reproduce the first two by introducing the Sérsic index  $n$ .

In the majority of radio sources, the surface brightness distribution of unresolved structures (e.g. nuclear region, blobs of SF, etc.) follow a Gaussian shape, resembling the Gaussian beam shape. Hence, it is common to perform image decomposition with this set of Gaussian basis functions. Additionally, extended emission can be approximated by exponential disc-like distributions (e.g. Murphy et al. 2017). All these cases can be expressed in terms of a combination of Sérsic functions.

#### 4.3.1 Implementation

For simplicity, for a 1D function, the alternative Sérsic law  $\mathfrak{S}$  is given by (e.g. Caon et al. 1993)

$$\mathfrak{S}(n, R) = I_n \exp \left\{ -b_n \left[ \left( \frac{R}{R_n} \right)^{1/n} - 1 \right] \right\}, \quad b_n \approx 2n - \frac{1}{3}, \quad (9)$$

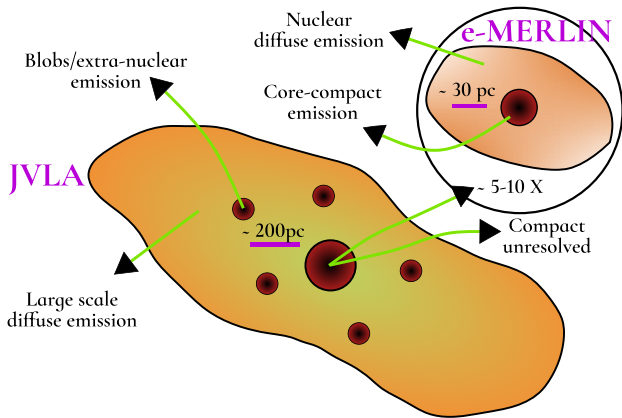
where  $R$  is the projected radius on the image plane;  $R_n$  is known as the effective radius, the radial distance that contains half of the total integrated luminosity or flux density  $S_\nu$ :  $\mathfrak{S}(n, R = R_n) = S_\nu/2$ ; and  $I_n$  is the intensity at  $R = R_n$ , that is,  $I_n = \mathfrak{S}(n, R = R_n)$ .

By using the Sérsic profile, we can robustly model the radio emission with distinct components. We have implemented the minimization in a general way, however we do not force arbitrary Sérsic indexes  $n$  during the fitting. Most radio sources are well described by elliptical Gaussian functions (Condon et al. 1998). With equation (9), a Gaussian distribution is recovered when  $n = 0.5$  and a disc distribution when  $n = 1$ .

For the radial distance in a 2D space, a generalized ellipse is described by a radial geometrical grid of the form (e.g. Peng et al. 2010)

$$R_G = \left( |x - x_0|^{C+2} + \left| \frac{y - y_0}{q} \right|^{C+2} \right)^{\frac{1}{C+2}}, \quad (10)$$

where  $C$  is a parameter that controls how round or boxy the ellipse is. For a usual ellipse,  $C = 0$ , and we use this value in the current work;  $q$  is the factor that deforms the ellipse in relation to its semimajor  $R_a$  and minor  $R_b$  axes (e.g.  $q = R_b/R_a$ ). This parameter is controlled by the aspect ratio of the radial grid;  $x_0$  and  $y_0$  are the origin of the



**Figure 7.** Representation of the structure of a U/LIRG, composed of distinct components on different spatial scales. The objectives are to disentangle the radio emission properties in each individual component. In Tables 7, 8(a), and 9 we present the decomposition results based on this cartoon.

radial grid (which will correspond to the centre of each component). To obtain the position angle, rotations are performed on the radial grid  $R_G$  for each model component. Hence, in equation (9), the 1D radius  $R$  is simply replaced by  $R_G$ .

In Fig. 7, we show a cartoon that clarifies the scales we aim to perform the image decomposition. We use that cartoon as a guide to our ideas for the next sections. More details of how the modelling of the radio emission is performed are given in Appendix B and in the GITHUB repository MORPHEN.<sup>4</sup> We also show a description of how we perform source extraction from the data, using SEP (Bertin & Arnouts 1996; Barbary et al. 2016) and PETROFIT (Geda et al. 2022), so that the initial conditions for each model component during the fitting are constrained with the data itself. An example of the application of this technique is presented in Fig. 8, where we demonstrate the multicomponent detection and image decomposition of the radio emission.

#### 4.4 Image shape analysis

Our primary objectives are to disentangle the properties of the nuclear region in terms of the emission that may be linked to an AGN/SB and the emission that is due to the nuclear diffuse and large-scale extended emission. The latter is interpreted to be related to SF, but we do not distinguish between AGN and SB emission, where SB is also an SF process. To quantify the radio emission, we perform a series of global morphometric measurements on all continuum images, and also quantify properties of each individual model components fitted to our continuum images. The strategy is summarized below:

(i) From the flux growth curve (Fig. D1), we estimate the effective area/region enclosing half of the total flux density,  $A_{50}$ . This is a conservative size (as it is done in Barcos-Muñoz et al. 2017) but provides a ‘safe’ characterization of the source dimension in the most energetic region. However, for sources that have both a diffuse and a core-compact or unresolved components, the  $A_{50}$  region has more intrinsic information about the core-compact part itself. That is why we require an alternative description for the diffuse size (see below).

(ii) We calculate the total area/region of the radio map, which we assume to be the one that encloses 95 per cent of the total integrated flux density,  $A_{95}$ . Since we are using the masking dilation, the 95 per cent area represents a good indicator of the total emission area.

(iii) From these previous areas, we infer the equivalent averaged circular radii using  $A = \pi R^2 \rightarrow R_{50} = \sqrt{A_{50}/\pi}$  and  $R_{95} = \sqrt{A_{95}/\pi}$  (see Section 6.3 for limitations).

(iv) When separating the diffuse emission (nuclear and large-scale) from the core-compact emission using the image fitting approach (see Fig. 8), we recover the convolved and deconvolved model components, see equations (B2) and (B1). From that, we compute  $A_{50}$  and  $A_{95}$  (as well the radii  $R_{50}$  and  $R_{95}$ ) for the deconvolved model components, respectively  $A_{50,d}$ ,  $A_{95,d}$ ,  $R_{50,d}$ , and  $R_{95,d}$ .

(v) Using the deconvolved quantities, brightness temperatures are calculated for the main core-compact structure (see Section 5.4).

(vi) Computation of SFRs and surface density SFRs,  $\Sigma_{\text{SFR}}$ . We measure these quantities in two regions: (1) in the nuclear region (within the extended total nuclear area  $A_{95,d}^{\text{ext-nuc}}$ ) after the AGN/SB contribution is subtracted and (2) the total multiscale SFR and  $\Sigma_{\text{SFR}}$ , which we take as the emission enclosed within the half-flux area  $A_{50}$ . Details of these calculations are given in Section 5.6.

## 5 RESULTS

Throughout the results and discussion sections, we will frequently refer to distances in the image plane between radio components, which are actually projected distances. But for simplicity, we just refer to them as distances, unless said otherwise. We also do not apply corrections factors for estimated sizes due to the inclination of our sources (e.g. Barcos-Muñoz et al. 2015). For simplicity, we assume that the image-projected distances/sizes and areas are a good representation of the source structure.

### 5.1 Global sizes of the radio emission

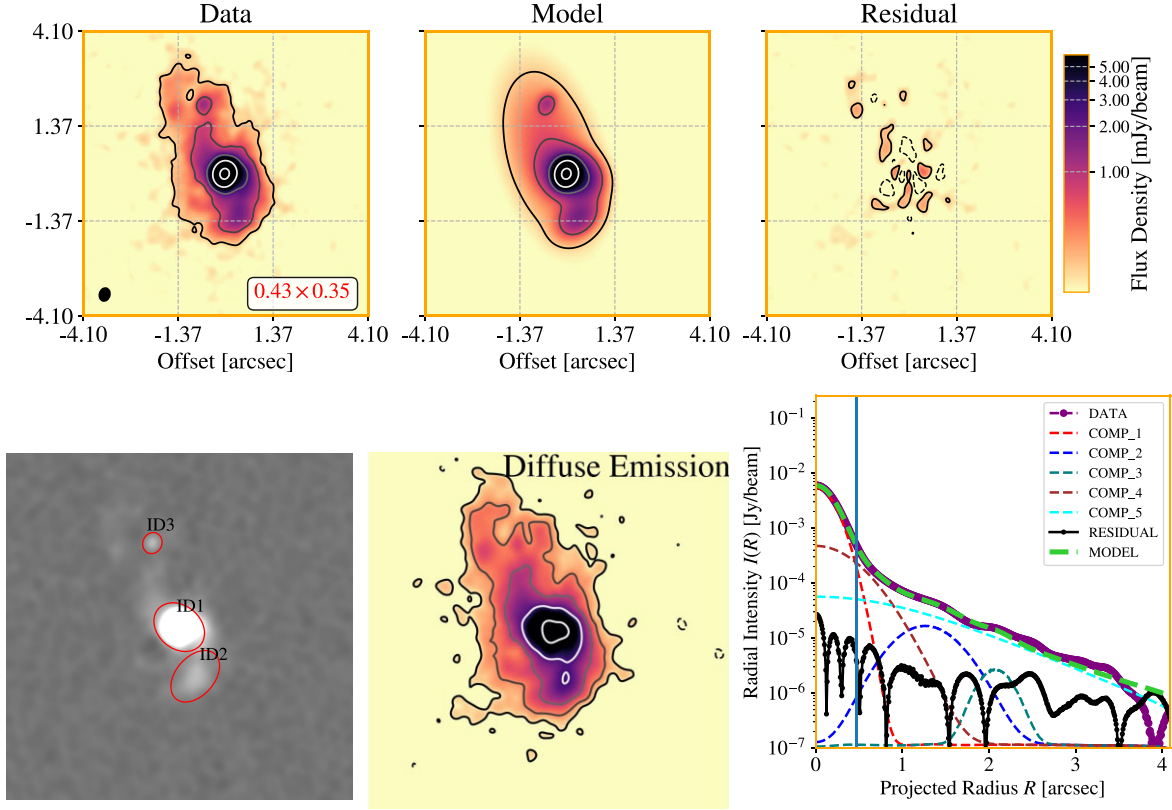
Before applying any decomposition to the radio emission, we summarize in Table 5 the main global properties of our sources derived from all continuum images. To capture the variation of the emission morphology across scales, we measure image properties for three sets of images: combined images, pure *e*-MERLIN and VLA images. To accommodate the value of a generic quantity  $Q$  measured in these set of images with a single notation, we adopt the following format to display the measurements:

$$\text{measured quantity } Q = \langle Q_{\text{VLA+eM}} \rangle_{\langle Q_{\text{eM}} \rangle}^{\langle Q_{\text{VLA}} \rangle}, \quad (11)$$

where  $\langle Q_{\text{VLA}} \rangle$  represents a quantity measured in a set of pure VLA images and  $\langle Q_{\text{eM}} \rangle$  in a set of pure *e*-MERLIN images; and  $\langle Q_{\text{VLA+eM}} \rangle$  is the intermediate (or nominal) value of a quantity measured in a set of combined interferometric images. In the following discussions, we refer to this mixed case as the ‘intermediate’ measurement. By quantifying properties in this way, we avoid image selection bias and also minimize the effects of errors associated with low signal-to-noise images, capturing the variance between common linear scales. We use this notation to display measurements in Tables 5–7.

From Table 5, our estimated global averaged half-flux sizes among all sources is  $\langle R_{50}^{\text{eM}} \rangle \sim 47$  pc for *e*-MERLIN maps and  $\langle R_{50}^{\text{VLA}} \rangle \sim 251$  pc for VLA. At intermediate resolutions, we obtained  $\sim 142$  pc. Comparing the intermediate values with *e*-MERLIN values, these results are consistent with previous studies showing evidence that the radio emission originating in nuclear discs have typical sizes of

<sup>4</sup><https://github.com/lucатели/morphen>.



**Figure 8.** Results on fitting multiple components to VV 705 N. Top row (from left to right, respectively) shows the original pure VLA radio map, the model (sum of all components) and the residual. Lower left: it is demonstrated how individual regions of radio emission are identified with SEP in order to compute basic photometry so that they are used to constrain the non-linear least-squares minimization. Lower centre: diffuse emission with the VLA unresolved component removed (COMP\_1). Lower right: the 1D azimuthally averaged surface brightness profile of the source jointly with all decomposed model components, five in total.

$\sim 100\text{--}200$  pc or less (e.g. Kawakatu & Wada 2008; Herrero-Illana, Pérez-Torres & Alberdi 2012; Song et al. 2021), and the sizes of very compact sources have the typical extent of  $\lesssim 50$  pc. In Sections 5.2 and 5.3, we compare these estimates with the sizes of disentangled core-compact components as well as with the disentangled diffuse emission.

Another critical comparison is the approximated total size of the emission (which we adopt  $R_{95}$ ), particularly in  $e$ -MERLIN images. It is established that if there is ‘missing flux’ between two instruments with distinct resolving power, such as  $e$ -MERLIN and VLA, that is an indication that diffuse emission exists on the intermediate scales (Oriente & Prieto 2010). In higher resolution maps, the average full emission size found is  $\langle R_{95}^M \rangle \sim 125$  pc, indicating that the larger contribution of radio flux density is enclosed in a region smaller than  $\sim 100$  pc. With respect to VLA images, the full extent obtained is  $\langle R_{95}^{\text{VLA}} \rangle \sim 1.5$  kpc. However, since we are using the A-configuration, these sizes can only represent a lower limit. As an illustration, the extent of UGC 8696 at C band using the VLA-D configuration exceeds 50 kpc (e.g. Kukreti et al. 2022). In Appendix A, we provide a detailed discussion with information for every source with our derived results from Tables 5–9.

## 5.2 Sérsic fitting decomposition results

We denote  $e$ -MERLIN flux densities by  $S_v^M$  and the VLA flux densities by  $S_v^{\text{VLA}}$ . Our aim is to identify relevant regions of radio

emission in both instruments, using a source detection algorithm, which it is explained in Appendix B1. Then, we proceed to split the flux density contribution into different components and scales. At the smallest scales, we have the core-compact flux density  $S_v^{\text{core-comp}}$  and the extended nuclear flux density  $S_v^{\text{ext-nuc}}$ , both probed by  $e$ -MERLIN. At the largest scales, we have the core-unresolved flux density  $S_v^{\text{core-unre}}$  (which is basically the ‘compact’ unresolved component by VLA) and the large-scale diffuse flux density  $S_v^{\text{ext}}$ .

For simplicity, Fig. 8 highlights the Sérsic fitting decomposition for a pure VLA image of VV 705 N. Source detected structures are labelled with ‘ID’ and model components with ‘COMP.’. For this source, we have used five model components, three were automatically added from the source detection, COMP\_1, COMP\_2, and COMP\_3, and two were manually added under visual inspection (see Appendix B1). To characterize the diffuse emission around the most compact structure (COMP\_1), we used model component COMP\_4. To model the larger scale ( $>1$  kpc) of the diffuse emission, we used component COMP\_5. Hence, ID1 is the parent structure, having COMP\_4 and COMP\_5 as subcomponents of COMP\_1.

The top panel of Fig. 8 shows the maps related to the data (left), model (centre), and residual (right). The lower panel, display the multicomponent detection (left) (see Appendix B), the diffuse emission after removing the compact components COMP\_1 and COMP\_3 (centre), and the 1D slices of their azimuthally averaged surface brightness profiles (right). These compare individual model components (dashed lines) with data (purple dotted line), residual (black dotted line), and total model (thick dashed lime-green line).

**Table 5.** Derived global source properties from our imaging data. For a given quantity  $Q$ , we express the results as  $\langle Q_{\text{VLA+eM}} \rangle_{(Q_{\text{eM}})}^{(Q_{\text{VLA}})}$ , where upper indices refer to pure VLA images, while lower indices to pure  $e$ -MERLIN images. The intermediate (nominal) value was determined in images from combined interferometric data.

Source (1)	$\langle S_{\text{peak}} \rangle$ [mJy beam $^{-1}$ ] (2)	$\langle R_{50} \rangle$ [pc] (3)	$\langle R_{95} \rangle$ [pc] (4)	$R_{\text{max}}^{\text{VLA}}$ [pc] (5)
VV 705 N	3.7 $^{5.6}_{2.4}$	109 $^{235}_{27}$	450 $^{1147}_{76}$	1805
VV 705 S	1.0 $^{1.7}_{0.5}$	148 $^{384}_{19}$	404 $^{1073}_{39}$	1686
UGC 5101	28.2 $^{37.6}_{14.8}$	132 $^{214}_{41}$	548 $^{801}_{175}$	1775
UGC 8696	17.4 $^{22.4}_{5.9}$	156 $^{180}_{87}$	622 $^{758}_{206}$	1464
UGC 8696 N	17.4 $^{22.4}_{5.9}$	136 $^{155}_{81}$	422 $^{475}_{192}$	905
UGC 8696 SE	3.9 $^{4.4}_{2.5}$	97 $^{119}_{32}$	233 $^{281}_{74}$	518
VV 250 SE	2.9 $^{4.9}_{0.6}$	162 $^{215}_{58}$	475 $^{688}_{103}$	1393
VV 250 NW	0.6 $^{0.9}_{0.2}$	156 $^{197}_{50}$	401 $^{507}_{79}$	1286

*Notes.* Columns – (1): source name, (2): the peak brightness of the source, (3): circular aperture containing half of the total flux (i.e. using  $A_{50} = \pi R_{50}^2$  (convolved quantity), and (4): total estimated size of the source (convolved quantity) for the set of combined images at the discussed threshold level. Note that lower values for  $R_{95}$  are an estimate of the total size of the emission in  $e$ -MERLIN images. (5): The circular size of the source using a pure natural weighted VLA image at  $\sim 6$  GHz. Since this image is the lowest resolution possible and improved sensitivity to large-scale structures, this is the maximum recoverable size of the emission from the available data (see footnote<sup>5</sup>).

<sup>5</sup>Note that this refers to the structure probed by VLA in A-configuration. For some sources, there is a significant fraction of emission coming from scales larger than 10 kpc, as it is the case of UGC 8696 when using the VLA-D configuration (e.g. Kukreti et al. 2022).

**Table 6.** Nuclear and extended sizes estimation using the interferometric decomposition. The two columns on the left side of the table (under ‘Nuclear’) refers to the sizes of the optimized  $e$ -MERLIN emission ( $I_1^{\text{mask}}$ , as exemplified in Fig. 6), while the right side (under ‘Extended’) refers to the size of the large-scale emission characterized by  $\mathcal{R}_{1,2}$  (as exemplified in Fig. 6). Quantities for the extended emission from  $e$ -MERLIN images (lower indices) are not shown because of the limitation of the method.

Interferometric decomposition	Nuclear		Extended	
Source (1)	$\langle R_{50} \rangle$ [pc] (2)	$\langle R_{95} \rangle$ [pc] (3)	$\langle R_{50} \rangle$ [pc] (4)	$\langle R_{95} \rangle$ [pc] (5)
VV705 (N)	107 $^{196}_{34}$	273 $^{471}_{109}$	329 $^{563}_{--}$	748 $^{1669}_{--}$
VV705 (S)	95 $^{186}_{27}$	204 $^{408}_{58}$	337 $^{553}_{--}$	698 $^{1371}_{--}$
UGC 5101	138 $^{235}_{37}$	428 $^{623}_{168}$	255 $^{396}_{--}$	769 $^{1696}_{--}$
UGC 8696	115 $^{170}_{60}$	285 $^{442}_{123}$	207 $^{315}_{--}$	658 $^{1160}_{--}$
VV250 (SE)	118 $^{189}_{74}$	250 $^{420}_{130}$	273 $^{383}_{--}$	615 $^{1091}_{--}$
VV250 (NW)	108 $^{180}_{50}$	210 $^{371}_{79}$	220 $^{465}_{--}$	457 $^{1029}_{--}$

*Notes.* Columns – (1): source name, (2): effective radius of the nuclear components, and (3) total estimated radius. (4): effective radius of the diffuse emission and (5) total estimated radius.

The fitting in pure  $e$ -MERLIN images is more complicated since the signal-to-noise ratio is lower and there are fewer sampling points to provide a statistical good fit. The starting point was an attempt to model the core-compact part with a Sérsic  $n = 0.5$  (Gaussian) – generally good (e.g. Condon 1997; Condon et al. 1998) – plus a second component ( $n = 0.5$  or 1.0) to model the nuclear-diffuse emission. However, the fit was not successful for VV 705 N and S. For these cases, a single function ( $n = 0.5$ )

was used to fit the most compact or blob region. Since we have not modelled the diffuse structure, we have considered that the total extended emission is simply represented by the residual image (subtracting the compact/blob model from the data). In these two cases, deconvolved areas for the nuclear diffuse emission were not established. Nevertheless, for UGC 5101, UGC 8696 (N and SE), and VV 250, a composite fit (compact + extended) was successful and the total nuclear diffuse flux density was considered to be the flux density from the nuclear-extended model component plus the remaining residual emission.

### 5.3 Nuclear versus large-scale emission properties

Using the concepts of Sections 4.2 and 4.3, we describe the disentangled properties from the nuclear radio emission probed by  $e$ -MERLIN (both core-compact and nuclear diffuse structures) and VLA (unresolved compact and large-scale diffuse emission).

With the image fitting decomposition (see Section. 5.2), we can reconstruct the total flux density,<sup>5</sup>  $S_{\nu}^{\text{ext-tot}}$  that originates from any structure that is not powered by (unresolved) core-compact regions by taking

$$S_{\nu}^{\text{ext-tot}} = S_{\nu}^{\text{VLA}} - S_{\nu}^{\text{core-comp}}, \quad S_{\nu}^{\text{ext-nuc}} = S_{\nu}^{\text{eM}} - S_{\nu}^{\text{core-comp}}. \quad (12)$$

With this approach, we probe any significant resolved nuclear diffuse emission recovered by  $e$ -MERLIN, providing a correction for the total multiscale flux density that is not generated by core-compact components, such as nuclear emission from nuclear star-forming regions as well as large-scale SF. Also, we estimate the ratio of core-compact components to the total radio flux density as  $S_{\nu}^{\text{core-comp}}/S_{\nu}^{\text{VLA}}$ . This is the fraction that we compare in Appendix A, individually for each source with values from the literature, when it comes to AGN fractions determinations. For completeness, we also compute the integrated flux density in the unresolved VLA components,  $S_{\nu}^{\text{core-unre}}$ , described by the Gaussian/Sérsic fit at the unresolved parts (e.g. COMP.1 in Fig. 8).

In Table 7, we present the size results for the cases previously discussed. On average, across all sources, the value of the half-light radii for the core-compact components is  $\sim 30$  pc (convolved) and  $\sim 20$  pc (deconvolved). The full sizes are  $\sim 60$  pc (convolved) and  $\sim 40$  pc (deconvolved). The averaged convolved half-light radii for the nuclear diffuse emission among the successful measurements (UGC 8696 N, UGC 5101, and VV 250 SE and NW) is  $\sim 100$  up to  $\sim 200$  pc in total extent. For these decomposed structures, we present the fractional flux densities computed with the Sérsic image fitting method in Table 8(a).

Regarding the total flux densities and fractions calculated with the interferometric decompositions from  $e$ -MERLIN and VLA maps, they are presented in Table 8(b). We quantify the extended flux density in VLA,  $S_{\nu}^{\text{ext}}$  as the sum of the emission from two maps:  $\mathcal{R}_{1,2}$  (equation 5) and  $\mathcal{R}_T$  (equation 7), that is

$$S_{\nu}^{\text{ext}} = \frac{1}{\mathfrak{B}_A} \sum (\mathcal{R}_{1,2} \times \text{mask}_{1,2}) + \frac{1}{\mathfrak{B}_A} \sum (\mathcal{R}_T \times \text{mask}_T), \quad (13)$$

where  $\mathfrak{B}_A$  is the beam area in each iteration image (see Fig. 5).

When comparing fitting results in VLA and  $e$ -MERLIN images, Tables 8(a) and (b), we note a significant difference between fractions of  $e$ -MERLIN to total VLA flux densities  $S_{\nu}^{\text{eM}}/S_{\nu}^{\text{VLA}}$  in comparison with  $S_{\nu}^{\text{core-comp}}/S_{\nu}^{\text{VLA}}$ . These differences arise from the contribution of the nuclear extended emission, which reduces and imposes a limit to the value of  $S_{\nu}^{\text{core-comp}}$ . For the two brightest sources, UGC 5101

**Table 7.** Decomposed properties of the radio emission using Sérsic image fitting approach. The column block in the left ‘Core-compact and unresolved components’ represent the sizes of the modelled core-compact or unresolved structures, while the block column in the right ‘Nuclear and large scale diffuse components’ represent the sizes of the nuclear diffuse (*e*-MERLIN) and large-scale extended (VLA) emission. The sizes are calculated on the resulting deconvolved and convolved images. The notation is the same as discussed in equation (11): the main value is the nominal quantity measured on combined images, lower indices refer to pure *e*-MERLIN images and upper indices to pure VLA images. We refer the reader to Fig. 7 for clarification. Additionally, we also differentiate between the deconvolved quantities as well the convolved quantities with the lower index ‘d’. The brightness temperature is measured on the brightest *e*-MERLIN core-compact deconvolved components.

Source (1)	Core-compact and unresolved components					Nuclear and large-scale diffuse components				
	$\langle R_{50,d} \rangle$ [pc] (2)	$\langle R_{50} \rangle$ [pc] (3)	$\langle R_{95,d} \rangle$ [pc] (4)	$\langle R_{95} \rangle$ [pc] (5)	$\langle T_b \rangle$ $\times 10^5$ [K] (6)	$\langle R_{50,d} \rangle$ [pc] (7)	$\langle R_{50} \rangle$ [pc] (8)	$\langle R_{95,d} \rangle$ [pc] (9)	$\langle R_{95} \rangle$ [pc] (10)	
VV 705 N <sup>a</sup>	44 <sup>56</sup> <sub>12</sub>	106 <sup>153</sup> <sub>18</sub>	114 <sup>140</sup> <sub>26</sub>	269 <sup>516</sup> <sub>41</sub>	3.3 ± 0.9	306 <sup>448</sup> <sub>51</sub>	371 <sup>516</sup> <sub>48</sub>	893 <sup>1336</sup> <sub>126</sub>	1195 <sup>1590</sup> <sub>77</sub>	
VV 705 S <sup>b</sup>	62 <sup>58</sup> <sub>15</sub>	115 <sup>151</sup> <sub>21</sub>	138 <sup>131</sup> <sub>29</sub>	258 <sup>341</sup> <sub>42</sub>	0.4 ± 0.1	429 <sup>513</sup> <sub>53</sub>	504 <sup>583</sup> <sub>53</sub>	781 <sup>1126</sup> <sub>126</sub>	995 <sup>1346</sup> <sub>134</sub>	
UGC 8696 N	81 <sup>76</sup> <sub>22</sub>	119 <sup>138</sup> <sub>27</sub>	162 <sup>153</sup> <sub>44</sub>	239 <sup>278</sup> <sub>53</sub>	7.7 ± 0.8	196 <sup>172</sup> <sub>139</sub>	215 <sup>219</sup> <sub>140</sub>	392 <sup>674</sup> <sub>279</sub>	430 <sup>803</sup> <sub>281</sub>	
UGC 8696 SE	53 <sup>53</sup> <sub>21</sub>	103 <sup>127</sup> <sub>26</sub>	106 <sup>105</sup> <sub>42</sub>	205 <sup>254</sup> <sub>52</sub>	5.1 ± 0.2	–	–	–	–	
UGC 5101	40 <sup>38</sup> <sub>14</sub>	100 <sup>165</sup> <sub>29</sub>	101 <sup>96</sup> <sub>60</sub>	247 <sup>412</sup> <sub>82</sub>	19.1 ± 3.0	235 <sup>267</sup> <sub>101</sub>	267 <sup>324</sup> <sub>130</sub>	691 <sup>1143</sup> <sub>177</sub>	911 <sup>1303</sup> <sub>240</sub>	
VV 250 SE	86 <sup>91</sup> <sub>54</sub>	117 <sup>145</sup> <sub>61</sub>	179 <sup>204</sup> <sub>96</sub>	249 <sup>325</sup> <sub>115</sub>	0.2 ± 0.1	198 <sup>270</sup> <sub>56</sub>	207 <sup>290</sup> <sub>68</sub>	383 <sup>645</sup> <sub>89</sub>	388 <sup>657</sup> <sub>113</sub>	
VV 250 NW	61 <sup>86</sup> <sub>26</sub>	109 <sup>155</sup> <sub>45</sub>	131 <sup>187</sup> <sub>40</sub>	233 <sup>337</sup> <sub>75</sub>	<0.1	281 <sup>380</sup> <sub>46</sub>	298 <sup>407</sup> <sub>58</sub>	490 <sup>638</sup> <sub>73</sub>	526 <sup>697</sup> <sub>98</sub>	

*Notes.* Columns (1): source name, (2): deconvolved effective radius of the core-compact and unresolved components, (3): similarly, but the convolved effective radius, (4): total deconvolved radius of the core-compact and unresolved components, (5): similarly, but the total convolved radius, (6): brightness temperature measured using the core-compact *e*-MERLIN deconvolved sizes, (7): deconvolved effective radius of diffuse components (nuclear diffuse emission and VLA diffuse emission), (8): similarly, but the convolved effective radius, (9): total deconvolved radius of diffuse components (nuclear diffuse emission and VLA diffuse emission), and (10): similarly, but the total convolved radius.

<sup>a</sup>For VV 705 N, the nuclear diffuse emission in *e*-MERLIN was not modelled, hence only its size (convolved) is provided. <sup>b</sup>For VV 705 S, the nuclear diffuse emission in *e*-MERLIN is almost absent, therefore associated sizes are uncertain and we have not shown the lower limits extracted from *e*-MERLIN images.

and UGC 8696, the nuclear emission dominates significantly over the VLA-A large-scale flux density, and for the other sources, the latter dominates over the nuclear flux density probed with *e*-MERLIN, in exception to VV 705 N, which shows equivalent contribution. It is relevant to mention that since the total *e*-MERLIN flux density is not pure core-compact, it is necessary to disentangle that component from any nuclear diffuse portion (see Fig. 7), which can be reported as compact/unresolved in a lower resolution instrument. Thus, we see that the multiscale diffuse flux density, interpreted as a by-product of SF, plays a significant role in the total radio emission. This idea is being discussed in recent studies, mainly in radio-quiet AGNs (Panessa et al. 2019) and radio-quiet quasars (e.g. Condon et al. 2013; Wang et al. 2022, 2023). Accurately measuring these differences is critical when studying high-redshift sources, since there is an instrumental limitation regarding angular resolution to separate such physical structures.

#### 5.4 Brightness temperatures

The brightness temperature  $T_b$  is defined with reference to a blackbody object (Burke et al. 2019). If we consider that the blackbody has a physical temperature  $T_b$ , then we can relate a source with brightness temperature  $T_b$  that will have the same brightness intensity as the blackbody (Morabito et al. 2022). Since most of the sources deviates from a blackbody,  $T_b$  is distinct for different physical processes existent in these sources, such as AGN, SB, and star-forming regions. For star-forming regions,  $T_b$  is capped at a maximum limited value imposed by the physics of the environment (e.g. Walter et al. 2009; Hopkins et al. 2010; Crocker et al. 2018) and also it depends on the frequency of observation. Therefore,  $T_b$  is a good discriminant to distinguish radio components such as AGN, SB, and diffuse SF mechanisms (Morabito et al. 2022). Brightness temperatures that exceed a value of  $\sim 1 \times 10^5$  K at  $\sim 6$  GHz can provide an indication of the existence of extreme compact sources. We use  $T_b$  to compare

our measurements of the nuclear regions with literature and check AGN classification.

The brightness temperature  $T_b$  is defined by (Kovalev et al. 2005; Ulvestad, Antonucci & Barvainis 2005)

$$T_b = \frac{2 \ln 2}{\pi k_B} \frac{c^2 (1+z) S_\nu}{\phi_{\text{maj}} \phi_{\text{min}} \nu^2}, \quad (14)$$

where  $k_B$  is the Boltzmann constant,  $z$  the redshift and  $\phi_{\text{maj}}$ ,  $\phi_{\text{min}}$  are the deconvolved semimajor and minor axes of the source (equations C6 and C7). In our image fitting implementation, recall that radii quantities are converted from half-light radius to FWHM (full width at half-maximum) Gaussian quantities through  $\phi = 2R_n \approx 2R_{50,d}$  (see equation C5).<sup>6</sup>

Results for  $T_b$  are just calculated for *e*-MERLIN images, on the brightest core-compact component. Because of that, the results in Table 7 do not follow the formatting introduced in equation (11). The errors presented are statistical, in terms of the variance of  $T_b$  calculated over multiple *e*-MERLIN images recovered with different weights.

#### 5.5 Morphology of the diffuse radio emission

After minimizing the flux contribution of the nuclear region due to core-compact components, we can explore the properties of the diffuse structures. These are primarily associated with synchrotron emission resulting from SF activity, which extends from the immediate vicinity of the nuclear regions (a few parsecs) to larger scales ( $> 1$  kpc). For each map of the diffuse emission, quantities such as  $R_{50}$  and  $R_{95}$  are re-calculated, since now we do not have the contamination from core-compact structures. The results are presented in Tables 6 and 7 under the label ‘Extended emission’. It should

<sup>6</sup>Therefore,  $\phi_{\text{maj}} = 2R_n$  and  $\phi_{\text{min}} = 2qR_n$  where  $q$  is the fitted axis ratio,  $q = R_b/R_a$ .

**Table 8.** Separation of nuclear or compact fluxes probed by *e*-MERLIN against diffuse emission, comparing two different approaches: (a) image Sérsic and (b) interferometric decomposition.

Sérsic fitting decomposition							
Source	$S_v^{\text{core-comp}}$ [mJy] <i>e</i> -MERLIN	$S_v^{\text{ext-nuc}}$ [mJy] <i>e</i> -MERLIN	$S_v^{\text{core-unre}}$ [mJy] VLA	$S_v^{\text{ext}}$ [mJy] VLA	$S_v^{\text{ext-tot}}$ [mJy] Diffuse total	$\frac{S_v^{\text{ext-tot}}}{S_v^{\text{core-comp}}}$	$\frac{S_v^{\text{core-comp}}}{S_v^{\text{VLA}}}$
VV 705 (N)	$3.7 \pm 0.2$	$2.3 \pm 1.1$	$6.6 \pm 1.0$	$6.1 \pm 0.9$	$9.3 \pm 0.3$	$2.52 \pm 0.16$	$0.28 \pm 0.02$
VV 705 (S)	$0.9 \pm 0.1$	$0.2 \pm 0.1$	$2.4 \pm 0.6$	$3.6 \pm 0.5$	$5.4 \pm 0.2$	$6.00 \pm 0.71$	$0.14 \pm 0.02$
UGC 5101	$23.8 \pm 0.9$	$17.7 \pm 4.0$	$33.0 \pm 2.2$	$26.5 \pm 1.3$	$37.5 \pm 1.0$	$1.57 \pm 0.07$	$0.38 \pm 0.02$
UGC 8696 N	$9.5 \pm 0.1$	$24.5 \pm 6.6$	$22.9 \pm 3.0$	$23.4 \pm 1.9$	$39.4 \pm 0.9$	$4.11 \pm 0.13$	$0.19 \pm 0.01$
UGC 8696 SE	$4.4 \pm 0.4$	$\sim 0$	$5.3 \pm 0.2$	$\sim 0$	$\sim 0$	$\sim 0$	$> 0.83 \pm 0.08$
VV 250 SE	$\lesssim 6.2 \pm 2.2$	$\gtrsim 2.2 \pm 1.8$	$7.9 \pm 0.9$	$10.0 \pm 0.8$	$11.7 \pm 2.3$	$1.89 \pm 0.76$	$< 0.34 \pm 0.12$
VV 250 NW	$\sim 0.5 \pm 0.6$	$\sim 0.9 \pm 0.5$	$1.6 \pm 0.1$	$1.7 \pm 0.4$	$\gtrsim 2.8$	$\gtrsim 5.6$	$\lesssim 0.15$

Interferometric decomposition						
Source	$S_v^{e-M}$ [mJy]	$S_v^{\text{ext}}$ [mJy]	$S_v^{\text{ext}}/S_v^{e-M}$	$S_v^{e-M}/S_v^{\text{VLA}}$	$S_v$ on $\mathcal{R}_T$ [mJy]	$S_v^{\text{VLA}}$ [mJy]
VV705 (N)	$6.0 \pm 1.0$	$6.1 \pm 0.8$	$1.02 \pm 0.21$	$0.46 \pm 0.08$	$1.9 \pm 1.0$	13.0
VV705 (S)	$1.2 \pm 0.3$	$4.5 \pm 0.7$	$3.75 \pm 1.10$	$0.19 \pm 0.04$	$1.2 \pm 0.9$	6.3
UGC 5101	$39.4 \pm 3.0$	$20.6 \pm 0.5$	$0.52 \pm 0.04$	$0.64 \pm 0.05$	$1.5 \pm 0.8$	61.3
UGC 8696	$31.6 \pm 2.7$	$20.6 \pm 1.3$	$0.65 \pm 0.07$	$0.58 \pm 0.05$	$1.5 \pm 3.0$	54.0
VV 250 (SE)	$7.3 \pm 1.0$	$10.2 \pm 0.9$	$1.40 \pm 0.12$	$0.42 \pm 0.06$	$1.4 \pm 1.3$	17.9
VV 250 (NW)	$1.0 \pm 0.4$	$2.2 \pm 0.3$	$2.29 \pm 0.36$	$0.31 \pm 0.14$	$0.7 \pm 0.6$	3.3

*Notes.* Flux densities estimates for the nuclear region, core-compact and nuclear diffuse components, and the VLA extended emission, using the image fitting decomposition.

Columns – (1): source name; (2):  $S_v^{\text{core-comp}}$  – recovered core-compact component flux density from *e*-MERLIN; (3):  $S_v^{\text{ext-nuc}}$  – estimated nuclear diffuse flux density in *e*-MERLIN; (4):  $S_v^{\text{core-unre}}$  – unresolved ‘compact’ flux density in VLA; (5):  $S_v^{\text{ext}}$  – large-scale diffuse flux density in VLA; and (6):  $S_v^{\text{ext-tot}}$  – total estimated diffuse flux density (small scale + large scale), where we assume  $S_v^{\text{ext-tot}} = S_v^{\text{VLA}} - S_v^{\text{core-comp}}$ .

*Notes.* Flux densities estimates for the extended and compact emission, using the interferometric decomposition method. In this table, there is no distinction between compact or non-compact components. The values only refers to *e*-MERLIN emission that is removed from VLA maps. In the general case, this emission can be core-compact (e.g. VV 705) and/or nuclear diffuse emission around those (e.g. UGC 8696) and/or blobs of emission. Columns – (1): source name, (2): the flux density originated from nuclear regions or from blobs probed by *e*-MERLIN, (3): the estimated flux density of the diffuse emission after removing the *e*-MERLIN contribution (see Fig. 4), (4): fraction of VLA extended flux density against *e*-MERLIN flux density, (5): residual flux density on the resulting image after subtraction, and (6): total VLA flux density recovered at  $\sim 6$  GHz. (i) In these two tables, error estimates are statistical, represented by the statistical significance of the variance of measurements that are computed between multiple images. (ii) When computing the fractions, for example,  $\frac{S_v^{\text{ext-tot}}}{S_v^{\text{core-comp}}}$ , we have added in quadrature the errors associated to  $S_v^{\text{ext-tot}}$  and  $S_v^{\text{VLA}}$  in Table 4 so that the errors attributed to the diffuse emission are properly propagated.

be noted that in Table 6, lower indices representing *e*-MERLIN images are omitted, as we cannot probe the nuclear-extended emission in pure *e*-MERLIN images using the method discussed in Section 4.2.

A notable observation from the 50 percent regions is that the sizes increase considerably in maps where the contribution of core-compact emission has been removed, compared to the original maps. This can be seen when comparing with the measurements in Table 5. For instance, in VV 705 N, the intermediate radial size that encloses half of the total flux is approximately 100 pc. None the less, this still incorporates significant information pertaining to the core-compact structure, rather than the diffuse one. After removing its contribution, the intermediate effective convolved size ranges from 329 to  $\sim 372$  pc. This suggests that if this emission is due to pure SF, the majority of the activity is confined in a region within  $\sim 400$  pc, and not within 100 pc. Across all sources, the average effective size  $R_{50}$  of diffuse regions ranges from about  $\sim 300$  to  $\sim 450$  pc, this more indicative of the size of the region dominated by the diffuse component alone. This can be contrasted with the average global effective sizes of  $\sim 250$  pc, as computed in Table 5.

## 5.6 Star formation from the radio continuum emission

To estimate the SFR of our sources, we can assume that all the flux density is non-thermal. However, that is it not completely true since we expect a fraction of thermal contribution at 6 GHz. Adopting the calibration for the SFR from Murphy et al. (2011, 2012) and Tabatabaei et al. (2017), where it is assumed that the non-thermal emission is connected to the SF via SNe rates, the following expression for the SFR combines both thermal and non-thermal contribution from the RC emission:

$$\left(\frac{\text{SFR}_v^{\text{RC}}}{M_\odot \text{yr}^{-1}}\right) = 10^{-27} \left[ 2.18 \left(\frac{T_e}{10^4 \text{K}}\right)^{0.45} \left(\frac{\nu}{\text{GHz}}\right)^{-0.1} + 15.1 \right] \times \left(\frac{\nu}{\text{GHz}}\right)^{-\alpha_{\text{NT}}} \left(\frac{L_\nu}{\text{ergs}^{-1} \text{Hz}^{-1}}\right)^{-1}. \quad (15)$$

Above,  $L_\nu$  is the spectral luminosity at frequency  $\nu$ ,

$$L_\nu = 4\pi D_{L_\nu}^2 S_\nu, \quad (16)$$

with  $S_\nu$  being the total flux density computed from the multiscale diffuse emission, and  $D_{L_\nu}$ , is the luminosity distance of the source

**Table 9.** Representative values of core-compact, nuclear, and large-scale diffuse emission areas, alongside SF and surface density star formation rates, SFR and  $\Sigma$ , respectively. SFRs are calculated using the extended emission only, both nuclear and large scale.

Source	$A_{95,d}^{\text{core-comp}}$ [kpc <sup>2</sup> × 10 <sup>3</sup> ] (2)	$A_{95,d}^{\text{ext-nuc}}$ [kpc <sup>2</sup> × 10 <sup>3</sup> ] (3)	$A_{50,d}^{\text{ext-tot}}$ [kpc <sup>2</sup> ] (4)	$A_{95}^{\text{ext-tot}}$ [kpc <sup>2</sup> ] (5)	SFR <sup>ext-nuc</sup> [M <sub>⊙</sub> yr <sup>-1</sup> ] (6)	SFR <sup>ext-tot</sup> [M <sub>⊙</sub> yr <sup>-1</sup> ] (7)	$\Sigma_{\text{ext-nuc}}^{95}$ [M <sub>⊙</sub> yr <sup>-1</sup> kpc <sup>-2</sup> ] (8)	$\Sigma_{\text{ext-tot}}^{50,d}$ [M <sub>⊙</sub> yr <sup>-1</sup> kpc <sup>-2</sup> ] (9)
VV 705 N <sup>a</sup>	2 ± 1	22 ± 14	0.982	9.099	17.6 ± 8.6	63.2 ± 3.2	454 ± 221	32 ± 3
VV 705 S	3 ± 1	–	1.264	6.029	–	37.0 ± 2.7	–	15 ± 2
UGC 5101	13 ± 13	177 ± 105	0.302	10.295	95.6 ± 31.3	254.6 ± 10.8	227 ± 74	420 ± 12
UGC 8696	15 ± 4	83 ± 29	0.232	4.595	157.7 ± 32.9	251.4 ± 8.4	1046 ± 218	542 ± 23
VV 250 SE	35 ± 23	27 ± 49	0.211	3.895	6.8 ± 4.0	57.5 ± 10.7	154 ± 127	135 ± 10
VV 250 NW	~ 7 ± 6	~ 22 ± 18	1.129	3.390	~ 1.7 ± 1.4	11.0 ± 2.1	~ 51 ± 58	5 ± 1

*Notes.* Columns – (1): source name, (2): deconvolved total area of the core-compact components, (3): total deconvolved area of the nuclear diffuse emission after removing the core-compact structures, and (4): deconvolved half-light area of the large-scale diffuse emission. This is used to compute  $\Sigma_{\text{ext-tot}}^{50,d}$ . (5): Total convolved area of the large-scale diffuse emission, (6): estimated SFR for the nuclear diffuse emission, after removing the core-compact contribution and assuming that the remaining emission is pure synchrotron (see Section 5.6 for details), (7): estimated total SFR for the entire diffuse emission (nuclear and large-scale) assuming that it is pure synchrotron, (8): surface density SFR at the nuclear region without core-compact components, and (9): overall surface density SFR for the total diffuse emission at the half-light area. <sup>a</sup>For VV 705 N, the convolved diffuse nuclear area was used instead, see the text for details.

in Mpc, given by (e.g. Condon & Matthews 2018)

$$D_{L_v} = D_L(1+z)^{-(\alpha+1)/2}, \quad D_L = (1+z)D_C. \quad (17)$$

with  $D_C$  the comoving distance in Mpc.

In equation (15), both thermal and non-thermal radio emission is accounted for Murphy et al. (2012). For our purposes to estimate the SFR, we adopt a non-thermal spectral index of  $\alpha^{\text{NT}} = -0.85$ , an electron temperature of  $T_e = 10^4$  K, and a frequency of  $\sim 6$  GHz.

Two particular SF estimates of interest are: the SFR in nuclear diffuse structures (nuclear SF),  $S_v^{\text{ext-nuc}}$ , and the total multiscale SFR in the lower resolution maps after removing the flux contribution from core-compact components,  $S_v^{\text{ext-tot}}$ . The nuclear diffuse SF is computed in the *e*-MERLIN maps without the contribution from core-compact components. Hence, we have that  $\text{SFR}^{\text{ext-nuc}} = \text{SFR}_{6\text{GHz}}^{\text{RC}}(S_v^{\text{ext-nuc}})$  (see equation 12 and Table 8) and consequently the nuclear surface density SFR is given by  $\Sigma_{\text{ext-nuc}}^{95} = \text{SFR}^{\text{ext-nuc}}/A_{95}^{\text{ext-nuc}}$ . We use the 95 percent area instead of 50 percent in order to capture the full morphology of the nuclear diffuse emission. The total multiscale extended emission SFR is given by  $\text{SFR}^{\text{ext-tot}} = \text{SFR}_{6\text{GHz}}^{\text{RC}}(S_v^{\text{ext-tot}})$  (see equation 12 and Table 8). To compute the total surface density of SF, we use as reference the maximum deconvolved half-light area of the VLA diffuse emission,  $A_{50,d}^{\text{ext}}$ . Then, the 6 GHz radio surface density SFR at the half-light is  $\Sigma_{\text{ext-tot}}^{50} = \text{SFR}^{\text{ext-tot}}/\max(A_{50,d}^{\text{ext}})$ .

To compute these values, the following assumptions are made. In *e*-MERLIN images, the core-compact component does not change significantly in relation to the nuclear diffuse emission when different weighting schemes are used during cleaning (i.e. a `robust` > 0.5). We assume that the total flux density of any nuclear diffuse emission will change more than the core-compact flux density. Hence, we consider the size of the nuclear diffuse emission to be the one related to the more natural image, that is, the one resulting from the larger restoring beam. Therefore, a good representative area for this nuclear diffuse emission can be expressed in terms of the area of this lower resolution *e*-MERLIN image, which is a map with the lowest angular resolution possible. In this context, the area will be maximum. This is a safe way to ensure that all the emission will be enclosed in that area. For completeness, the mean value of these areas and variances in terms of the standard deviation are shown in Table 9 (under  $A_{95,d}^{\text{ext-nuc}}$ ).

The same assumption is used when using VLA images, where we consider that the total area of the large-scale continuum emission is represented by the image restored with the larger beam. Additionally,

for both cases, we use the variance of the flux measurements in the multiscale diffuse emission as an estimate of uncertainties for the SFR as well as the  $\Sigma_{\text{SFR}}$ , which are also presented in Table 9.

## 6 DISCUSSION

### 6.1 Leveraging limited sensitivity to separate the nuclear and large-scale diffuse emission

Interferometers with different resolutions and sensitivities pinpoint unique properties of radio sources. With *e*-MERLIN we lack the necessary large-scale sensitivity to characterize the diffuse emission resulting from SF on scales  $\gtrsim 100$ –200 pc. Nevertheless, we are able to recover the radio flux density from primarily nuclear (mostly compact) regions. In contrast, the VLA is able to only partially resolve inner regions but performs well at mapping the radio emission of the source, encompassing both the diffuse synchrotron radiation from SF and the flux originating from the compact/unresolved parts. Hence, when considering the multiscale PARADIGM, limited sensitivity is not an issue at all, but an advantage. If *e*-MERLIN is detecting the flux mainly from AGN or SB, then it might be possible to subtract that flux density (and structure) from VLA images. Thereby, we can disentangle the radio power arising from different regions, such as circumnuclear SF, AGN, and SB.

Still, further considerations need to be addressed. For example, in UGC 8696, a considerable portion of nuclear diffuse emission exists at scales of about  $\sim 200$  pc. For single-frequency observations, to separate the core-compact flux from the nuclear diffuse flux, alternative methodologies must be employed. One could leverage other higher resolution data, such as VLBI, and implement the technique outlined in Section 4.2, with *e*-MERLIN serving as the lower resolution observation (similar to our use of VLA) or utilize the image fitting on images available at multiple spatial resolutions. With our current data, in Appendix A and Figs D4 and D5, we provide a comprehensive example of how to decompose the nuclear region of UGC 8696.

### 6.2 Comparison between methods

The interferometric decomposition method in Section 4.2 does not disentangle substructures in the higher resolution maps, as both core-compact and nuclear diffuse emission are used in the optimization process. However, we can use the Sérsic fitting from Section 4.3 to

separate fluxes from the core-compact region from that of the rest of the emission.

The residuals provided by the interferometric decomposition approach (Section 4.2) are significant,  $\sim 2$  mJy (Table 8b). This is an indication of relevant diffuse emission in the outskirts of the source, as can be seen in the lower right plot of Fig. 6 (panel showing  $\mathcal{R}_T$ ). The size results for the dominant nuclear regions, which on average have sizes of  $\sim 200$ – $250$  pc, agree with previous studies (e.g. Colina & Pérez-Olea 1992). Song et al. (2021) estimated similar sizes for nuclear ring structures in normal SF galaxies and LIRGs. The extent of the nuclear regions is also compatible with the sizes of nuclear discs studied in Medling et al. (2014).

The fractional fluxes  $S_v^{\text{core-comp}}/S_v^{\text{VLA}}$  are compared individually with literature values for each source in Appendix. A. We observe a significant contribution from emission originating in nuclear diffuse structures ( $S_v^{\text{ext-tot}}/S_v^{\text{core-comp}}$ ), especially pronounced in sources with lower luminosities. This observation aligns with the concept that, within local galaxies, the most luminous U/LIRGs have a higher proportion of their total radio power coming from core-compact components (AGN or SB) rather than diffuse components (e.g. Rujopakarn et al. 2011). However, a substantial portion of this nuclear flux is still situated in dense nuclear regions, which can be strongly influenced by AGN and SB activity. As of now, it remains unclear what fraction of this flux should be attributed to SF processes, including an SB, or solely linked to the AGN. Hence, we require deeper investigations of these radio structures, which can be robustly analysed using our multiscale approach, in combination with multiple observational data.

### 6.3 Limitations

*Size estimates.* The size estimates, converted from pixel area to radii via  $A = \pi R^2$ , are a good discriminant for spherical components, albeit not so appropriate for asymmetrical or elongated ones. For example, in the case of the VLA image of VV 250 NW,  $R_{95}$  is about 1.3 kpc. However, by examining the scale bar on the radio map in Fig. 3, we see that the semimajor and semiminor axes are about  $\sim 2.0$  and  $\sim 0.5$  kpc, respectively. Hence, one dimension of the source is underestimated while the other is overestimated. In a future work, we will adopt a more robust approach to tackle such asymmetries.

*Deconvolved sizes.* Deconvolved sizes are obtained using image fitting based on the parameter  $R_n$ . Furthermore, we have computed values such as  $R_{50,d}$  and  $R_{95,d}$  from individual model images within the deconvolved image space. In an ideal scenario characterized by infinite signal-to-noise ratio, both  $R_n$  and  $R_{50,d}$  would exhibit similarity. However, due to the presence of noise in real data, coupled with statistical errors and convolution effects, a brief examination reveals that  $R_n$  is not necessarily equal to  $R_{50,d}$  for a given fitted component.

Additionally, we note that for complex emission, the fit can only provide an overall representation of the surface brightness distribution. That is also true for poor-quality images. For example, in the case of VV 250 (SE and NW), the emission recovered by *e*-MERLIN contains low signal-to-noise ratio, with unrecovered structures due to the amount of data flagged, incomplete *uv*-coverage, and possible calibration and imaging errors. The model describing those structures is a smooth profile that attempts to fit the overall emission of the source. Hence, the deconvolved size is not accurate and only represents the overall size of the radio structure.

*Data limitation.* Our data are not able to resolve completely core-compact structures ( $\lesssim 20$  pc) and also not able to map very extended structures ( $\gtrsim 5$  kpc) since we are using the VLA-A configuration.

When *e*-MERLIN cannot resolve the most compact structures, no information can be gathered regarding the origin of the radio power for a single frequency. In that case, the core-compact flux  $S_v^{\text{core-comp}}$  will be overestimated. In the VLA end, the A-configuration is less sensitive to extended structures than the D-configuration or a single-dish telescope, for example. When there is more flux from larger scales ( $> 10$  kpc), the total diffuse flux  $S_v^{\text{ext-tot}}$  may be underestimated. One can use complementary data or available literature information to correct this flux density.

By using only single-band observations (6 GHz), we can not conduct studies using spectral index maps in order to obtain better discriminants between AGN and SB. That would provide more accurate SF estimates at the nuclear regions. For now, we are statistically limited in making conclusions on a broader picture of the physical processes in local U/LIRGs. Nevertheless, we focused this paper on introducing a methodology and testing it in a small sample with the available data, so that it will be applied in future work to a larger and multifrequency sample.

## 7 CONCLUSIONS

### 7.1 Summary

We have presented new high-resolution radio observations ( $\sim 50$  mas) using *e*-MERLIN at C band (6.0 GHz) for four merging local U/LIRGs ( $\sim 150$  Mpc). We have combined this data with sensitive archival observations from the VLA at the same frequency using the A-configuration ( $\sim 0.3$  arcsec resolution). Introducing two novel image-based methodologies, we extracted valuable physical insights from the radio maps at both nuclear regions ( $\sim 20$ – $200$  pc) and larger scales ( $\gtrsim 1$  kpc, see Tables 7 and 8). Through this analysis, we robustly measured the sizes of the radio emission and computed fractional fluxes between core-compact structures and diffuse emission regions, interpreted as being associated with SF processes. Consequently, we derived multiscale tracers for the extended flux density,  $S_v^{\text{ext-tot}}$  (refer to Table 8a), and star formation rate,  $\text{SFR}^{\text{ext-tot}}$  (see Table 9).

We present below the key findings of our paper:

(i) We have introduced two novel approaches to characterize the multiscale structure of the radio emission in local U/LIRGs, maximizing the scientific output from interferometric data sensible to different angular scales. Within individual limitations, our results showed that both methods agreed with each other. Our methods are adaptable to other radio frequencies and instruments, making them suitable for the analysis of larger data sets, from both existing and upcoming radio surveys. In particular, our image-fitting approach has potential applications beyond radio astronomy. For instance, in optical studies where Sérsic modelling is extensively used to morphologically quantify the structural properties of elliptical, spiral, and lenticular galaxies.

(ii) The nuclear emission associated with a nuclear disc ( $\sim 50$ – $200$  pc), and excluding the most compact ( $\lesssim 20$  pc) emission from potential AGN/SB, is responsible for a significant fraction of the total radio emission at 6 GHz (Table 8a). Despite not separating the radio emission into AGN and SB components, we robustly determined the sizes and flux densities of the radio emission, providing upper and lower limits through two different ways:

(a) Interferometric decomposition (Section 4.2 and Table 6): for the nuclear regions across all sources, the estimated averaged effective size is  $R_{50} \sim 113$  pc for radio maps with intermediate resolutions (0.10–0.25 arcsec). With *e*-MERLIN, we found a

lower-upper limit of  $\sim 46$  pc, while for VLA, an upper-lower limit of  $\sim 190$  pc. After removing the *e*-MERLIN emission from VLA maps (e.g. Fig. 6), the extended emission in pure VLA maps provided an averaged effective radius across all sources of  $\langle R_{50} \rangle \sim 438$  pc, with a total extent of  $\langle R_{95} \rangle \sim 1326$  pc.

(b) Image decomposition (Section 4.3 and Tables 7 and 8):

(1) Core-compact components: in maps with intermediate resolutions, we obtained deconvolved effective sizes of  $\langle R_{50,d} \rangle \sim 67$  pc for the core-compact components (averaged across all sources). The fitting on pure *e*-MERLIN maps resulted in lower limits of  $\langle R_{50,d} \rangle \sim 20$  pc, and the fitting in pure VLA images gave upper limits of  $\langle R_{50,d} \rangle \sim 72$  pc. In respect to the full extent of these components, we obtained  $\langle R_{95,d} \rangle \sim 143$  pc on intermediate maps, with  $\langle R_{95,d} \rangle \sim 41$  pc in *e*-MERLIN and  $\langle R_{95,d} \rangle \sim 162$  pc in VLA maps.

(2) Extended emission: with *e*-MERLIN maps, after subtracting the contribution of the core-compact components (e.g. Table 7 and Figs D4 and D5), the nuclear extended emission resulted in an averaged effective radius of  $\langle R_{50} \rangle \sim 104$  pc, having a full extent of  $\langle R_{95} \rangle \sim 192$  pc. Alternatively, the large-scale diffuse emission probed by VLA resulted  $R_{50} \sim 447$  pc and  $R_{95} \sim 1.1$  kpc, obtained by subtracting the unresolved components (e.g. Fig. 8).

(iii) In each of the previously characterized regions, we were able to recover fractions of flux densities compatible with previous studies (see Appendix A). Additionally, our method enabled us to investigate how AGN fractions for the same source can exhibit both higher and lower values, biased by limited data. It is also worth mentioning that our results were derived from two interferometers, providing a robust characterization. This serves as preliminary evidence of the new insights our approach can offer when utilizing two or more interferometers.

(iv) From the calculated fractions of flux densities, we found that there is an interplay between the core-compact emission coming from AGN/SB regions in relation to the nuclear diffuse emission. The latter have a significant contribution to the total radio power, which resulted in larger estimates for the total multiscale extended flux density  $S_{\nu}^{\text{ext-tot}}$ . It also brings down the fraction between the core-compact emission in relation to the total radio emission,  $S_{\nu}^{\text{core-comp}}/S_{\nu}^{\text{VLA}}$ . Hence, if not performing the multiscale structural decomposition from high- to low-resolution maps altogether, the contribution from core-compact components can be overestimated. It is noted also that, if we look at the total unresolved flux densities from VLA ( $S_{\nu}^{\text{core-unre}}$ , Table 8), they are higher almost up to a factor two in relation to the flux density from core-compact components probed by *e*-MERLIN. This means that almost half of the total flux density of an unresolved VLA component (at scales of  $\sim 200$ – $400$  pc) is resolved on smaller scales, thus not being morphologically a core-compact structure. The other half, then, is core-compact at scales of  $\lesssim 50$  pc. However, we would require other instruments with higher angular resolutions to further dissect these fractions until we reach the subparsec physical limit regime.

(v) For the broader context of the physics of U/LIRGs, we need to obtain accurate determination of the aforementioned flux densities fractions and associated sizes, understand their connection with radio morphologies (at the local Universe) and related physical mechanisms through spectral analysis. After that, we can study other objects in the distant Universe, where most of their structures will be unresolved, and then infer their properties from multiscale calibrated studies of local systems. Such high-redshift environments may

contain sources with structures that harbour a substantial unresolved portion of their nuclear-diffuse emission. We provided a detailed example of this for the local system UGC 8696 (Figs D4 and D5).

(vi) We conclude that it is required to apply the aforementioned methodologies to the full galaxy sample with a wide range of frequencies in order to properly evaluate the fractions of core-compact fluxes, the multiscale diffuse emission and the fractions of thermal and non-thermal processes across the radio spectrum. We are particularly interested to uncover the origin of the nuclear diffuse emission and how it co-exists with the central energy source. Understanding these factors will be essential on the study of high-redshift objects.

(vii) We have shown that by using combined data with matching baselines and similar sensitivity, we can map the radio emission at different structural scales, therefore obtaining high-resolution images with improved sensitivity. This is true since, with VLA, we considerably reduce the short-spacing issue present in *e*-MERLIN (see Fig. 1). Hence, imaging combined observations with weighting towards *e*-MERLIN will produce images that are not possible to construct when imaging *e*-MERLIN data alone. The same applies to VLA, in respect to resolution.

## 7.2 Future work

Our approach to quantify the sizes of the radio emission, fractions of flux densities and associated morphologies is independent of the instrument and also on the frequency of observation. This strategy can be used to disentangle more radio components, such as SB from AGN, and jets from diffuse emission. We take this opportunity to achieve improvements and turn our methodology completely automated in the near future. This will be essential for the next-generation instruments such as the SKA and the Next Generation VLA, which will provide observations with high-resolution and simultaneously high sensitivity to all compact and diffuse scales.

Follow-up work will consist in the same analysis conducted in this work, for the complete LIRGI sample and in a multifrequency basis. Multifrequency data from VLA from 1.4 to 33 GHz will be combined with existing *e*-MERLIN observations at *L* band (1.4 GHz) and *C* band (6 GHz). This will provide a more complete high-resolution sampling of the *uv*-coverage, as well better resolved spectral information for a multicomponent and multiscale study of the spectral energy distribution. Thus, establishing a comprehensive understanding of the physical processes over the radio spectrum that drives the evolution of local U/LIRGs, and enabling a new framework to explore distant mergers.

## ACKNOWLEDGEMENTS

We acknowledge financial support from grant LINKB20064 (Spanish National Research Council Program of Scientific Cooperation for Development i-LINK + 2020). GL acknowledge financial support for a PhD studentship from Science and Technology Facilities Council (STFC) (grant 2627016). JM, MP-T, and AA acknowledge financial support from the grant CEX2021-001131-S funded by Ministerio de Ciencia e Innovación/Agencia Estatal de Investigación (MCIN/AEI)/ 10.13039/501100011033. JM acknowledges financial support from the grant PID2021-123930OB-C21 funded by MCIN/AEI/ 10.13039/501100011033, by ‘ERDF A way of making Europe’ and by the ‘European Union’ and by the grant TED2021-130231B-I00 funded by MCIN/AEI/ 10.13039/501100011033 and by the ‘European Union NextGenerationEU/PRTR’. MP-T and AA

acknowledge financial support through grant PID2020-117404GB-C21, funded by MCIN/AEI/ 10.13039/501100011033. JM acknowledges the Spanish Prototype of an SRC (SPSRC) service and support funded by the Spanish Ministry of Science, Innovation and Universities, by the Regional Government of Andalusia, by the European Regional Development Funds and by the European Union NextGenerationEU/PRTR. The SPSRC acknowledges financial support from the State Agency for Research of the Spanish MCIU through the ‘Center of Excellence Severo Ochoa’ award to the Instituto de Astrofísica de Andalucía (SEV-2017-0709) and from the grant CEX2021-001131-S funded by MCIN/AEI/ 10.13039/501100011033. This project has received funding from the European Union’s Horizon 2020 research and innovation programme under grant agreement no. 101004719 (ORP). We would like to acknowledge the support of the *e*-MERLIN Legacy project ‘LIRGI’, upon which this study is based. *e*-MERLIN and, formerly, MERLIN, is a National Facility operated by the University of Manchester at Jodrell Bank Observatory on behalf of the STFC. Open access and page charges to this article will be paid by the University of Manchester. We would like to thank the anonymous reviewer for many useful questions and suggestions that helped improve the manuscript. The National Radio Astronomy Observatory is a facility of the National Science Foundation operated under cooperative agreement by Associated Universities, Inc. This research has made use of the NASA/IPAC Extragalactic Database (NED), which is operated by the Jet Propulsion Laboratory, California Institute of Technology, under contract with the National Aeronautics and Space Administration.

## DATA AVAILABILITY

Data used in this work are available under request to the corresponding author, in multiple formats, such as phase-calibrated and self-calibrated visibilities (single and combined) and images. Code documentation, development notes, and JUPYTER notebooks to conduct the analysis are publicly available at the following GitHub repository: <https://github.com/lucattelli/morphen>.

## REFERENCES

- Algera H. S. B. et al., 2022, *ApJ*, 924, 76
- Andrae R., Jahnke K., Melchior P., 2011, *MNRAS*, 411, 385
- Arango-Toro R. C., Ciesla L., Ilbert O., Magnelli B., Jiménez-Andrade E. F., Buat V., 2023, *A&A*, 675, A126
- Armus L. et al., 2009, *PASP*, 121, 559
- Astropy Collaboration, 2022, *ApJ*, 935, 167
- Barbary K., Boone K., McCully C., Craig M., Deil C., Rose B., 2016, *kbarbary/sep: v1.0.0*, Zenodo, available at: <https://doi.org/10.5281/zenodo.159035>
- Barcos-Muñoz L. et al., 2015, *ApJ*, 799, 10
- Barcos-Muñoz L. et al., 2017, *ApJ*, 843, 117
- Bauer A. E. et al., 2013, *MNRAS*, 434, 209
- Bell E. F., 2003, *ApJ*, 586, 794
- Bertin E., Arnouts S., 1996, *A&AS*, 117, 393
- Biggs A. D., Ivison R. J., 2008, *MNRAS*, 385, 893
- Biggs A. D., Younger J. D., Ivison R. J., 2010, *MNRAS*, 408, 342
- Bondi M., Pérez-Torres M. A., Herrero-Illana R., Alberdi A., 2012, *A&A*, 539, A134
- Bondi M., Pérez-Torres M.-A., Dallacasa D., Muxlow T. W. B., 2005, *MNRAS*, 361, 748
- Bradbury J. et al., 2018, JAX: composable transformations of Python + NumPy programs, available at: <http://github.com/google/jax> (accessed March 2024)
- Branch M. A., Coleman T. F., Li Y., 1999, *SIAM J. Sci. Comput.*, 21, 1
- Breda I., Papaderos P., Gomes J. M., Amarantidis S., 2019, *A&A*, 632, A128
- Briggs D. S., 1995, PhD thesis, New Mexico Institute of Mining and Technology
- Burke B. F., Graham-Smith F., Wilkinson P. N., 2019, *An Introduction to Radio Astronomy*. Cambridge Univ. Press, Cambridge
- Calabrò A. et al., 2019a, *A&A*, 623, A64
- Calabrò A. et al., 2019b, *A&A*, 632, A98
- Cao C. et al., 2016, *ApJS*, 222, 16
- Caon N., Capaccioli M., D’Onofrio M., 1993, *MNRAS*, 265, 1013
- Carilli C. L., Taylor G. B., 2000, *ApJ*, 532, L95
- Chen Y. M. et al., 2013, *MNRAS*, 429, 2643
- Ciotti L., Bertin G., 1999, *A&A*, 352, 447
- Colina L., Pérez-Olea D., 1992, *MNRAS*, 259, 709
- Condon J. J., 1992, *ARA&A*, 30, 575
- Condon J. J., 1997, *PASP*, 109, 166
- Condon J. J., Cotton W. D., Greisen E. W., Yin Q. F., Perley R. A., Taylor G. B., Broderick J. J., 1998, *AJ*, 115, 1693
- Condon J. J., Kellermann K. I., Kimball A. E., Ivezić Ž., Perley R. A., 2013, *ApJ*, 768, 37
- Condon J. J., Matthews A. M., 2018, *PASP*, 130, 073001
- Conway J. E., Pérez-Torres M. A., 2008, Luminous Infra-Red Galaxy Inventory (LIRGI), <https://www.e-merlin.ac.uk/legacy/proposals/e-MERLIN.Legacy.LIRGI.pdf> (accessed March 2024)
- Crocker R. M., Krumholz M. R., Thompson T. A., Clutterbuck J., 2018, *MNRAS*, 478, 81
- Davies R. L. et al., 2016, *MNRAS*, 462, 1616
- De Jong R. S., Simard L., Davies R. L., Saglia R. P., Burstein D., Colless M., McMahan R., Wegner G., 2004, *MNRAS*, 355, 1155
- De Looze I. et al., 2014, *A&A*, 568, A62
- de Souza R. E., Gadotti D. A., dos Anjos S., 2004, *ApJS*, 153, 411
- Dey S., Goyal A., Malek K., Galvin T. J., Seymour N., Santos T. D., Piotrowska J., Charmandaris V., 2022, *ApJ*, 938, 152
- Díaz-Santos T. et al., 2017, *ApJ*, 846, 32
- Dietrich J. et al., 2018, *MNRAS*, 480, 3562
- Drzazga R. T., Chyży K. T., Jurusik W., Wiórkiewicz K., 2011, *A&A*, 533, A22
- Dutta R., Srikanth R., Gupta N., 2018, *MNRAS*, 480, 947
- Espósito F., Vallini L., Pozzi F., Casasola V., Mingozzi M., Vignali C., Gruppioni C., Salvestrini F., 2022, *MNRAS*, 512, 686
- Falstad N. et al., 2021, *A&A*, 649, A105
- Farrah D., Afonso J., Efstathiou A., Rowan-Robinson M., Fox M., Clements D., 2003, *MNRAS*, 343, 585
- Farrah D. et al., 2008, *ApJ*, 677, 957
- Ferrari F., de Carvalho R. R., Trevisan M., 2015, *ApJ*, 814, 55
- Floc’h E. L. et al., 2005, *ApJ*, 632, 169
- Freeman K. C., 1970, *ApJ*, 160, 811
- Gadotti D. A., Athanassoula E., Carrasco L., Bosma A., De Souza R. E., Recillas E., 2007, *MNRAS*, 381, 943
- Galvin T. J. et al., 2018, *MNRAS*, 474, 779
- Gao H., Ho L. C., 2017, *ApJ*, 845, 114
- Geda R., Crawford S. M., Hunt L., Bershady M., Tollerud E., Randriamampandry S., 2022, *AJ*, 163, 202
- Grimes J. P., Heckman T., Strickland D., Ptak A., 2005, *ApJ*, 628, 187
- Haan S. et al., 2011, *AJ*, 141, 100
- Haan S. et al., 2013, *MNRAS*, 434, 1264
- Harrison I. et al., 2020, *MNRAS*, 495, 1737
- Hattori T. et al., 2004, *AJ*, 127, 736
- Häussler B. et al., 2007, *ApJS*, 172, 615
- Hernán-Caballero A. et al., 2009, *MNRAS*, 395, 1695
- Herrero-Illana R., Pérez-Torres M. A., Alberdi A., 2012, *A&A*, 540, 1
- Herrero-Illana R. et al., 2014, *ApJ*, 786, 156
- Herrero-Illana R. et al., 2017, *MNRAS*, 471, 1634
- Hickox R. C., Alexander D. M., 2018, *ARA&A*, 56, 625
- Hodge J. A. et al., 2019, *ApJ*, 876, 130
- Hopkins P. F., Murray N., Quataert E., Thompson T. A., 2010, *MNRAS*, 401, L19
- Howell J. H. et al., 2010, *ApJ*, 715, 572
- Hung C. L. et al., 2014, *ApJ*, 791, 63
- Ilbert O. et al., 2013, *A&A*, 556, A55

- Imanishi M., Dudley C. C., Maloney P. R., 2001, *ApJ*, 558, L93
- Iwasawa K. et al., 2011, *A&A*, 529, A106
- Jin J.-J., Zhu Y.-N., Wu H., Lei F.-J., Cao C., Meng X.-M., Zhou Z.-M., Lam M. I., 2019, *ApJS*, 244, 33
- Kawakatu N., & Wada K., 2008, *ApJ*, 681, 73
- Kim D. C. et al., 2013, *ApJ*, 768, 102
- Klöckner H.-R., Baan W. A., 2004, *A&A*, 419, 887
- Kovalev Y. Y. et al., 2005, *AJ*, 130, 2473
- Kukreti P. et al., 2022, *A&A*, 664, A25
- Larson K. L. et al., 2016, *ApJ*, 825, 128
- Larson K. L. et al., 2020, *ApJ*, 888, 92
- Leech J., Isaak K. G., Papadopoulos P. P., Gao Y., Davis G. R., 2010, *MNRAS*, 406, 1364
- Linden S. T. et al., 2017, *ApJ*, 843, 91
- Linden S. T. et al., 2019, *ApJ*, 881, 70
- Linden S. T., Murphy E. J., Dong D., Momjian E., Kennicutt R. C., Meier D. S., Schinnerer E., Turner J. L., 2020, *ApJS*, 248, 25
- Liu W. et al., 2019, *ApJ*, 872, 39
- Lonsdale C. J., Lonsdale C. J., Smith H. E., Diamond P. J., 2003, *ApJ*, 592, 804
- Lonsdale C. J., Farrah D., Smith H. E., 2006, in Mason J. W., ed., *Astrophysics Update 2*. Praxis Publishing Ltd, Chichester, UK, p. 285
- Lucatelli G., Ferrari F., 2019, *MNRAS*, 489, 1161
- Lutz D. et al., 2020, *A&A*, 633, 1
- Madau P., Dickinson M., 2014, *ARA&A*, 52, 415
- Magliocchetti M., 2022, *A&AR*, 30, 6
- Magnelli B., Elbaz D., Chary R. R., Dickinson M., Le Borgne D., Frayer D. T., Willmer C. N. A., 2009, *A&A*, 496, 57
- Mancuso C. et al., 2017, *ApJ*, 842, 95
- McMullin J. P., Waters B., Schiebel D., Young W., Golap K., 2007, in Shaw R. A., Hill F., Bell D. J., eds, *ASP Conf. Ser. Vol. 376, Astronomical Data Analysis Software and Systems XVI*. Astron. Soc. Pac., San Francisco, p. 127
- Medling A. M. et al., 2014, *ApJ*, 784, 70
- Modica F. et al., 2012, *AJ*, 143, 16
- Mohan N., Rafferty D., 2015, *Astrophysics Source Code Library*, record ascl:1502.007
- Moldon J., 2021, *Astrophysics Source Code Library*, record ascl:2109.006
- Morabito L. K. et al., 2022, *MNRAS*, 515, 5758
- Murphy E. J. et al., 2011, *ApJ*, 737, 67
- Murphy E. J. et al., 2012, *ApJ*, 761, 97
- Murphy E. J., Momjian E., Condon J. J., Chary R.-R., Dickinson M., Inami H., Taylor A. R., Weiner B. J., 2017, *ApJ*, 839, 35
- Muxlow T. W. B. et al., 2005, *MNRAS*, 358, 1159
- Muxlow T. W. et al., 2020, *MNRAS*, 495, 1188
- Newville M., Stensitzki T., Allen D. B., Ingargiola A., 2014, *LMFIT: Non-Linear Least-Square Minimization and Curve-Fitting for Python*. Zenodo, available at: <https://doi.org/10.5281/zenodo.7370358>
- Offringa A. R., Smirnov O., 2017, *MNRAS*, 471, 301
- Offringa A. R., et al., 2014, *MNRAS*, 444, 606
- Olsson E., Aalto S., Thomasson M., Beswick R., 2010, *A&A*, 513, A11
- Orienti M., Prieto M. A., 2010, *MNRAS*, 401, 2599
- Panessa F., Baldi R. D., Laor A., Padovani P., Behar E., McHardy I., 2019, *Nat. Astron.*, 3, 387
- Paspaliaris E. D. et al., 2021, *A&A*, 649, A137
- Peng C. Y., Ho L. C., Impy C. D., Rix H.-W., 2010, *AJ*, 139, 2097
- Pérez-Torres M. A., Romero-Cañizales C., Alberdi A., Polatidis A., 2009, *A&A*, 507, L17
- Pérez-Torres M., Mattila S., Alonso-Herrero A., Aalto S., Efstathiou A., 2021, *A&AR*, 29, 2
- Perma M., Cresci G., Brusa M., Lanzuisi G., Concas A., Mainieri V., Mannucci F., Marconi A., 2019, *A&A*, 623, 1
- Petric A. O. et al., 2011, *ApJ*, 730, 1
- Popkov A. V., Kovalev Y. Y., Petrov L. Y., Kovalev Y. A., 2021, *AJ*, 161, 88
- Radcliffe J. F., Beswick R. J., Thomson A. P., Njeri A., Muxlow T. W. B., 2024, *MNRAS*, 527, 942
- Ramírez-Olivencia N., Varenus E., Pérez-Torres M., Alberdi A., Conway J. E., Alonso-Herrero A., Pereira-Santaella M., Herrero-Illana R., 2022, *A&A*, 658, A4
- Rau U., & Cornwell T. J., 2011, *A&A*, 532, A71
- Ricci C. et al., 2017, *MNRAS*, 468, 1273
- Rieke G. H., Alonso-Herrero A., Weiner B. J., Pérez-González P. G., Blaylock M., Donley J. L., Marcillac D., 2009, *ApJ*, 692, 556
- Rodríguez Zaurín J. et al., 2014, *A&A*, 571, A57
- Romero-Cañizales C., Mattila S., Alberdi A., Pérez-Torres M. A., Kankare E., Ryder S. D., 2011, *MNRAS*, 415, 2688
- Romero-Cañizales C., Pérez-Torres M. A., Alberdi A., 2012a, *MNRAS*, 422, 510
- Romero-Cañizales C. et al., 2012b, *A&A*, 543, A72
- Romero-Cañizales C. et al., 2017, *MNRAS*, 467, 2504
- Rujopakarn W., Rieke G. H., Eisenstein D. J., Juneau S., 2011, *ApJ*, 726, 93
- Rupke D. S., Veilleux S., 2013, *ApJ*, 768, 75
- Sanders D. B., Mirabel I. F., 1996, *ARAA*, 34, 749
- Sanders D. B., Mazzarella J. M., Kim D.-C., Surace J. A., Soifer B. T., 2003, *AJ*, 126, 1607
- Schober J., Schleicher D. R. G., Klessen R. S., 2016, *ApJ*, 827, 109
- Serra J., 1984, *Image Analysis and Mathematical Morphology*, Vol. 1. Academic Press, New York
- Sérsic J. L., 1963, *Bol. Asoc. Argentina de Astron. La Plata Argentina*, 6, 41
- Shangguan J., Ho L. C., Li R., Zhuang M.-Y., Xie Y., Li Z., 2019, *ApJ*, 870, 104
- Simard L. et al., 2002, *ApJS*, 142, 1
- Soifer B. T. et al., 2000, *AJ*, 119, 509
- Song Y. et al., 2021, *ApJ*, 916, 73
- Song Y. et al., 2022, *ApJ*, 940, 52
- Stierwalt S. et al., 2013, *ApJS*, 206, 1
- Tabatabaei F. S. et al., 2017, *ApJ*, 836, 185
- Tadhunter C. et al., 2018, *MNRAS*, 478, 1558
- The CASA Team, 2022, *PASP*, 134, 114501
- Thompson A. R., Moran J. M., Swenson G. W. J., 2017, *Interferometry and Synthesis in Radio Astronomy*, 3rd edn, Springer, Berlin
- Thompson T. A., Quataert E., Murray N., 2009, *MNRAS*, 397, 1410
- Thompson T. A., Quataert E., Waxman E., Murray N., Martin C. L., 2006, *ApJ*, 645, 186
- U V., 2022, *Universe*, 8, 392
- U V. et al., 2013, *ApJ*, 775, 115
- U V. et al., 2019, *ApJ*, 871, 166
- Ulvestad J. S., Antonucci R. R. J., Barvainis R., 2005, *ApJ*, 621, 123
- Vardoulaki E. et al., 2015, *A&A*, 574, A4
- Varenus E. et al., 2016, *A&A*, 593, A86
- Veilleux S. et al., 2013, *ApJ*, 776, 27
- Vivian U. et al., 2012, *ApJS*, 203, 9
- Vollmer B., Soida M., Dallant J., 2022, *A&A*, 667, A30
- Walter F., Riechers D., Cox P., Neri R., Carilli C., Bertoldi F., Weiss A., Maiolino R., 2009, *Nature*, 457, 699
- Wang A., An T., Cheng X., Ho L. C., Kellermann K. I., Baan W. A., Yang J., Zhang Y., 2022, *MNRAS*, 518, 39
- Wang A., An T., Zhang Y., Cheng X., Ho L. C., Kellermann K. I., Baan W. A., 2023, *MNRAS*, 525, 6064
- Whitaker K. E., Van Dokkum P. G., Brammer G., Franx M., 2012, *ApJ*, 754, L29
- Williams D. R. et al., 2019, *MNRAS*, 486, 4962
- Yamada S., Ueda Y., Tanimoto A., Imanishi M., Toba Y., Ricci C., Privon G. C., 2021, *ApJS*, 257, 61
- Yamada S. et al., 2023, *ApJS*, 265, 37
- Yuan F.-T., Argudo-Fernández M., Shen S., Hao L., Jiang C., Yin J., Boquien M., Lin L., 2018, *A&A*, 613, A13
- Yuan T. T., Kewley L. J., Sanders D. B., 2010, *ApJ*, 709, 884
- Yun M. S., Reddy N. A., Condon J. J., 2001, *ApJ*, 554, 803
- Zubovas K., Bialopetravičius J., Kazlauskaitė M., 2022, *MNRAS*, 515, 1705

## SUPPORTING INFORMATION

Supplementary data are available at [MNRAS](https://www.mnras.org/online) online.

## supplementary\_online.pdf

Please note: Oxford University Press is not responsible for the content or functionality of any supporting materials supplied by the authors. Any queries (other than missing material) should be directed to the corresponding author for the article.

## APPENDIX A: COMMENTS ON INDIVIDUAL SOURCES

The detailed analysis in the next paragraphs was derived with our multiscale methods using multiresolution radio maps, where some examples are shown in Figs 2 and 3. For reference on derived quantities, see Tables 5–9.

## VV 705

*System description.* This is a binary merger system (classification M3, Rupke & Veilleux 2013; Larson et al. 2016) with a nuclear separation of  $\sim 6$ – $7$  kpc, featuring long tidal tails ( $\sim 40$  arcsec) revealed by *Hubble Space Telescope* data. VV 705 N is brighter than VV 705 S in the IR. Over the past few years, uncertainties about the existence of an AGN remained. As well, the AGN contribution fraction is unclear: using the [N II]/H $\alpha$  diagram, Yuan, Kewley & Sanders (2010) estimated AGN fractions of 0.5 and 0.3 for the north and south components, respectively, while no concrete evidence for an AGN was established by (Rupke & Veilleux 2013), giving a fraction of 10 per cent or less. But more recent studies suggest that this system is facing high SF and AGN activity, multiphase outflows of ionized gas and good evidence of feedback (e.g. Yuan et al. 2018; Perna et al. 2019).

*VV 705 N Global properties.* The higher resolution maps indicate a very core-compact component ( $\lesssim 27$  pc) with some signs of nuclear diffuse emission ( $\sim 76$  pc). More weight towards VLA reveals a prominent and smoothly distributed emission around the unresolved/core-compact component, extending to a radial scale over  $\sim 2$  kpc. From our images, it is also possible to see a faint blob structure at the north region of VV 705 N, located at a distance of  $\sim 1.7$  kpc from the core region (component 3 in Fig. 8), which was not mentioned/identified in previous works [Iwasawa et al. (2011) in X-rays, Barcos-Muñoz et al. (2015) at 33 GHz, and Vardoulaki et al. (2015) at 8 GHz]. For this system (N and S), the 6 GHz images in this work are the highest resolution presented until now in literature. The total recovered flux for this source in *e*-MERLIN is  $\sim 7$  mJy, while in VLA is  $\sim 12.7$  mJy. The half-light global radii are in average  $\sim 109$ – $235$  pc, while the maximum extent is  $\sim 1.8$  kpc.

*Decomposition results.* Half-light sizes for the core-compact component are  $R_{50} \sim 30$  pc ( $R_{50,d} \sim 23$  pc), while the full sizes are  $R_{95} \sim 69$  pc ( $R_{95,d} \sim 52$  pc). This region contains a total integrated flux density of  $\sim 3.7$  mJy. Using  $R_{50,d}$  and equation (14), the estimated brightness temperature is  $3.3 \times 10^5$  K. This is a good indication of an AGN ( $> 10^5$  K) which was identified by recent studies (Yuan et al. 2018; Perna et al. 2019). Regarding the nuclear extended component, the computed sizes are  $R_{50} \sim 48$  pc and  $R_{95} \sim 77$  pc, with a total integrated flux of  $\sim 3.4$  mJy. For VLA images, the unresolved component encloses a total flux of  $\sim 6.1$  mJy, with estimated sizes of  $R_{50,d} \sim 56$  pc and  $R_{50,d} \sim 140$  pc.

By using total nuclear extended emission with the VLA diffuse  $S_v^{\text{ext}}$  the estimated total multiscale extended emission provides a total flux of  $\sim 9.3$  mJy, so the fraction between the core-compact flux to the total radio flux at 6 GHz is  $\sim 0.28$ , while if using the unresolved VLA component, it gives a fraction of 0.48, a factor of almost two.

*SFR results.* In the nuclear region we obtained  $\text{SFR}^{\text{ext-nuc}} \sim 17.6 M_{\odot} \text{ yr}^{-1}$  with a high nuclear surface density SFR of  $\Sigma_{\text{ext-nuc}}^{95} \sim 454 M_{\odot} \text{ yr}^{-1} \text{ kpc}^{-2}$ . The total SFR for this source is  $\sim 63 M_{\odot} \text{ yr}^{-1}$  (which already includes the nuclear contribution). This value agree with previous studies,  $70$ – $80 M_{\odot} \text{ yr}^{-1}$  (Hickox & Alexander 2018; Paspaliaris et al. 2021; Esposito et al. 2022), but we still have to account for the S component below.

*VV 705 S Global properties.* In *e*-MERLIN, the main core-compact component is visible with an emission size of  $R_{50} \sim 19$  pc and  $R_{95} \sim 39$  pc. There are no signs of significant nuclear diffuse emission. Going through the lower resolution maps another structure is visible, at about 0.65 kpc NE of the nuclear region, which significantly contributes to the total flux (e.g. the half-light region encompasses this structure), and this component is not mentioned in previous studies. The total recovered flux for the S source is about 1.0 mJy in *e*-MERLIN and 6.2 mJy in VLA. Half of the total VLA flux is enclosed in a radius of  $R_{50} \sim 148$ – $384$  pc within a total maximum radial size of about 1.7 kpc.

*Decomposition results.* In *e*-MERLIN, the core-compact component has an average half-light of  $R_{50} \sim 21$  pc ( $R_{50,d} \sim 15$  pc) and a full extent of  $R_{95} \sim 42$  pc ( $R_{95,d} \sim 29$  pc) containing  $\sim 1.0$  mJy in flux. For the brightness temperature, this yields  $T_B \sim 0.4 \times 10^5$  K. Additionally, nuclear extended emission is almost absent (or negligible,  $< 0.2$  mJy, within errors).

With combined data, the nuclear region has an average size of  $R_{95} \sim 258$  pc ( $R_{95,d} \sim 138$  pc). On pure VLA images, a significant amount of diffuse emission appears as sensitivity is gained, with sizes of  $R_{50} \sim 583$  pc ( $R_{50,d} \sim 513$ ) up to a full size of  $R_{95} \sim 1.3$  kpc ( $R_{95,d} \sim 1.1$  kpc).

The fraction of core-compact flux density in relation to the multiscale diffuse flux density is 0.14 for VV 705 S. For comparison, when using the total unresolved VLA component, that fraction would be 0.36. Combining the fractions between VV 705 N and S, the total ratio between the flux density of core-compact components in relation to the total radio flux density is 0.24. This value agrees well with the measured fraction of 0.25 by Dietrich et al. (2018) using the IR bolometric luminosity. This result is larger than the 0.1 measured by Rupke & Veilleux (2013). Additionally, if we use the unresolved VLA component as the core-compact structure, the fractions 0.48 and 0.36 agrees with Yuan et al. (2010) using [N II]/H $\alpha$  diagrams, where 0.5 and 0.3 were obtained, respectively for N and S sources.

*SFR results.* The nuclear diffuse flux density is almost negligible, so no attempt was made to compute SFR and  $\Sigma_{\text{SFR}}$ . The total SFR resulted in  $\text{SFR}^{\text{ext-tot}} \sim 37 M_{\odot} \text{ yr}^{-1}$  with a density of  $\Sigma_{\text{ext-tot}}^{50,d} \sim 15 M_{\odot} \text{ yr}^{-1} \text{ kpc}^{-2}$ . The SFR is higher than the value of  $\sim 11 M_{\odot} \text{ yr}^{-1}$  determined by Yuan et al. (2018). Hence, combining the SFR from sources N and S sums to an estimate of  $\sim 100 M_{\odot} \text{ yr}^{-1}$  which is close to values obtained by Rupke & Veilleux (2013), De Looze et al. (2014), and Paspaliaris et al. (2021).

## UGC 5101

*System description.* UGC 5101 is a ULIRG of merger class 5 (Haan et al. 2011; U et al. 2019) and classified as Sy 1.5, LINER. Previous studies pointed out that this source has a compact unresolved core smaller than  $\sim 200$  pc (Soifer et al. 2000), and VLBI observations

show that the nuclear region is composed of three main core-compact components (Lonsdale et al. 2003), with diameters smaller than  $\sim 4$  pc. There are multiple indications that UGC 5101 hosts an AGN (Imanishi, Dudley & Maloney 2001; Lonsdale et al. 2003; Grimes et al. 2005; Iwasawa et al. 2011; Dietrich et al. 2018; U et al. 2019).

*Global properties.* Our *e*-MERLIN images feature two clear components. The main one contains a large fraction of the flux density, while the faint south-east component contains about  $\sim 5$  percent of the total *e*-MERLIN integrated flux density. The main structure is not completely resolved, as can be seen by its asymmetric shape. The reason is that, from the VLBI study, its nature is represented by the two core-compact sources which turns to split into five smaller components. The half-light averaged size of the nuclear region probed by *e*-MERLIN is  $\sim 41$  pc. The faint diffuse blob in the southeast region of the main component seen in our maps is revealed to be a diffuse component by the VLBI study. Additionally, there are some signs of diffuse emission when using a more natural weighting scheme in the higher resolution maps, giving an extent of  $R_{95} \sim 175$  pc. The total integrated flux density recovered in the nuclear region with *e*-MERLIN is  $\sim 37$  mJy.

In the lower resolution maps (VLA), one feature of the emission is that the core region has a different orientation in relation to the diffuse emission, and this orientation is also distinct from the overall orientation of the nuclear region probed by *e*-MERLIN. It is possible also to see a second component in the north direction of the core region, with a total integrated flux density of about  $\sim 1$  mJy. At larger scales, the half-light radius of UGC 5101 is  $R_{50} \sim 132$ – $214$  pc, reaching a full extent of  $R_{95} \sim 1.7$  kpc. The total integrated flux density recovered by VLA is  $\sim 60$  mJy. We additionally report that the full extended emission is only recoverable when using a natural weight during deconvolution (restoring beam of  $0.60$  arcsec  $\times$   $0.49$  arcsec, lower rightmost plot in Fig. 2), and that structure represents a fraction of 0.1 of the total flux density.

*Decomposition results.* From the higher resolution maps, the estimated total size of the core-compact region is  $R_{95} \sim 82$  pc ( $R_{95,d} \sim 60$  pc deconvolved) with a half-light radius of  $R_{50} \sim 29$  pc ( $R_{50,d} \sim 14$  pc deconvolved). This component encloses a total flux density of  $S_{\nu}^{\text{core-comp}} \sim 24$  mJy. Using the deconvolved size for the core-compact component, we obtain a value of  $\sim 19 \times 10^5$  K for the brightness temperature, representing a good indication for an AGN. With respect to the nuclear diffuse emission, the estimated extent is  $R_{95} \sim 240$  pc ( $R_{95,d} \sim 177$  pc deconvolved) with a half-light radius of  $R_{50} \sim 130$  pc ( $R_{50,d} \sim 101$  pc deconvolved). The integrated flux density of the nuclear diffuse emission is  $S_{\nu}^{\text{ext-nuc}} \sim 18$  mJy.

The unresolved component by VLA yields a total flux density of  $\sim 33$  mJy and the VLA extended flux density is around  $\sim 26$  mJy. As before, by removing the core-compact flux, we estimate that the total diffuse flux density (small and large scales) is  $S_{\nu}^{\text{ext-tot}} \sim 37.5$  mJy and the fraction  $S_{\nu}^{\text{core-comp}} / S_{\nu}^{\text{VLA}}$  is 0.38. For comparison, by using the unresolved VLA component, that fraction would be 0.53. Results from literature for this fraction span a wide range of measurements, using different approaches. We just report some of those values: Dietrich et al. (2018) found a value of 0.76, while Díaz-Santos et al. (2017) provided 0.25 using combined diagnostics for the bolometric AGN fraction and a value of 0.41 using combined MIR diagnostics, which is close to our estimate.

*SFR results.* The SFRs for this source is significantly high, in total  $\sim 254 M_{\odot} \text{ yr}^{-1}$  and at the nuclear region, the estimated value is also significant,  $\sim 95 M_{\odot} \text{ yr}^{-1}$ . The total SFR is considerably higher than previous studies, which pointed to:  $\sim 100 M_{\odot} \text{ yr}^{-1}$  (Esposito et al. 2022; Yamada et al. 2023) using X-ray and radio wavelengths; and  $\sim 25 M_{\odot} \text{ yr}^{-1}$  (Dietrich et al. 2018) using IR luminosity. However,

the value found in this work is similar to De Looze et al. (2014), which used an FIR tracer, getting an estimate of  $\sim 223 M_{\odot} \text{ yr}^{-1}$ .

The surface densities of SFR are  $227 M_{\odot} \text{ yr}^{-1} \text{ kpc}^{-2}$  for the nuclear diffuse emission and  $\sim 420 M_{\odot} \text{ yr}^{-1} \text{ kpc}^{-2}$  within the half-light area after minimizing the contribution from the core-compact flux. By observations made by Lonsdale et al. (2003), which point out the possible location of an AGN on smaller scales, we conclude that these high SFRs using radio emission as a tracer are plausible. We have not considered the effects of jets in this computation, as our data are limited to detect any evidence of their presence.

## UGC 8696 N–NE–SW

*System description.* Also known as Mrk 273, it is a late-stage merger and dual-AGN ULIRG and classified as a Seyfer 1 (U et al. 2013; Liu et al. 2019; U 2022). It is also classified as AGN by X-ray observations (Yamada et al. 2021). This is a source that shows significant changes in radio emission across multiple scales. High-resolution observations by Klöckner & Baan (2004) using EVN showed OH maser emission within a circumstellar disc at the N component. Also, Bondi et al. (2005) provided high-resolution observations of a dense nuclear SB at the nuclear region of the N component. Additionally, recent works provided good indications of multiphase outflows (Rodríguez Zaurín et al. 2014; Lutz et al. 2020; Zubovas, Bialopetravičius & Kazlauskaitė 2022) that can extend up to 5 kpc (Tadhunter et al. 2018) as also pinpointed by LOFAR observations (Kukreti et al. 2022). These latter work argues about the possibility that this source harbours three AGNs instead of two.

*Global properties.* The *e*-MERLIN imaging results reveal with enough sensitivity the diffuse emission around the N component as well resolution to partially resolve the inner region into three main components (see Fig. D4) where we see the main component at the centre, one spherical structure in the SW direction at a distance of  $\sim 70$  pc and one elongated structure in the NE direction. The sizes of this region in *e*-MERLIN is  $R_{50} \sim 81$  pc up to  $R_{95} \sim 192$  pc, with a total integrated flux density of  $\sim 40$  mJy.

In the VLA image, on kpc scales, the source becomes more complex, where sensitivity is enough to map more components: NW, NE, and SW (SW1 and SW2). We can clearly see these structures in Vardoulaki et al. (2015) and Kukreti et al. (2022). We report that for this source in particular, it was necessary to perform nine steps of self-calibration [i.e.  $3 \times (\text{phase} + \text{phase} + \text{amplitude})$ ] to be able to recover the extended structures and remove deconvolution artefacts in the NW component.

Since the structure of this source is complex, the sizes are just an estimation of the overall morphology of the radio emission, which in VLA provided an extent of  $\sim 0.9$  kpc. For the total integrated flux density, we were not able to recover from the maps the already reported value of 60 mJy (including the SE component, see below, Barcos-Muñoz et al. 2017). However, inspecting the amplitude versus *uv* distance, the amplitude at the shortest baselines appears to converge to  $\sim 60$  mJy.

*UGC 8696 N Global properties.* By using *e*-MERLIN, we are able to resolve the nuclear region into two main features: a noticeable circumstellar disc of diffuse emission around a small region, which may be the location of at least three core-compact components. These were observed with EVN/VLBI in a much higher resolution (5 mas) in Bondi et al. (2005) where evidence is presented supporting the idea of a high SN rate. These authors also found that the dominating region size where extreme SF is taking place is of about  $\sim 30$  pc. The sizes computed in *e*-MERLIN maps were  $R_{50} \sim 87$  pc and  $R_{95}$

$\sim 206$  pc, with a total flux density of  $\sim 31.6$  mJy. To determine  $T_b$  for this source, we have used only the deconvolved fitted size of the main component, that is, ID<sub>1</sub> in Fig. D4, which provided a value of  $T_b \sim 6.7 \times 10^5$  K.

Moving to the large-scale structure of this source, we notice a very clear relation between the alignment of the nuclear region components with the emission on scales  $> 1$  kpc, where new components are visible – here, we use the same labels as Kukreti et al. (2022) – NE, NW, and SW. The SW region consists of two blobs (SW1 and SW2) with a distance of  $\sim 0.85$  and  $\sim 1.6$  kpc from the N component. On the north-west side,  $\sim 1.2$  kpc apart from N, there is another blob of emission. Each one of these have, roughly, a total integrated flux of  $\sim 1$  mJy. On the NE side of the source, located at  $\sim 1.6$  kpc from N, we see a diffuse component ( $\sim 1$  mJy) that is almost aligned with the N and SW components. We consider components SW2 and NW as part of blob/core-compact emission, while the NE and SW1 as diffuse emission.

**Decomposition results.** For the core-compact region, we obtained half-light radii of  $R_{50} \sim 27$  pc ( $R_{50,d} \sim 22$  pc) and having a full extent of  $R_{95} \sim 53$  pc ( $R_{95,d} \sim 44$  pc). The integrated flux density within these components is about 10 mJy. Strikingly, the component that most contributes to the total flux density is from the diffuse emission (see Appendix A), in total,  $\sim 24$  mJy. Our size estimates gives  $R_{50} \sim 140$  pc and  $R_{95} \sim 281$  pc, with similar deconvolved counterparts.

Taking the total corrected diffuse emission of  $\sim 40$  mJy against the core-compact flux, 14.5 mJy (the sum of both two core-compact regions, see discussion for UGC 8696 SE below), the calculated fraction is 0.36. That is larger than the 0.08 using X-rays studies from Yamada et al. (2023) and similar to 0.34 by Veilleux et al. (2013) in relation to the bolometric luminosity combining different tracers (see their paper for details). Our value is less than half of the one provided by Dietrich et al. (2018), 0.66.

**SFR results.** The complexity of the N component is clear. Taking only the diffuse emission of the circumstellar disc, we estimate a nuclear SFR<sup>ext-nuc</sup> of  $\sim 157 M_{\odot} \text{ yr}^{-1}$ , while the surface density is the highest between our sources,  $\Sigma_{\text{ext-nuc}}^{95} \sim 1000 M_{\odot} \text{ yr}^{-1} \text{ kpc}^{-2}$ . The surface density for the VLA images considering the half-light area resulted in an estimate of  $\Sigma_{\text{ext-tot}}^{50,d} \sim 542 M_{\odot} \text{ yr}^{-1} \text{ kpc}^{-2}$ .

**UGC 8696 SE Global properties.** The SE component of UGC 8696 is a core-compact source. With our *e*-MERLIN observations, we were not able to probe extended emission. In Bondi et al. (2005), with higher resolution observations, there is evidence of diffuse emission around this core-compact component, at scales smaller than 10 pc. This can explain the fact that even unresolved, the SE component is not completely symmetric. In VLA images, we can see a faint diffuse structure ( $< 1$  mJy) towards the SW direction. We also see a connection between the N and SE components, but in this case, it may be due to the fact that both (N and SE) are unresolved and almost blended.

**Decomposition results.** For this source, no decomposition was needed because a single model component was enough to describe the source structure. We obtained a deconvolved half-light radii of  $\sim 21$  pc with a full deconvolved extent of  $R_{95,d} \sim 42$  pc. After removing the core-compact component, which yielded an integrated flux of density of  $\sim 5$  mJy, no significant sign of diffuse emission is present. Using its core-compact flux density and the deconvolved sizes, we obtain a brightness temperature of  $T_b 5.2 \times 10^5$  K, which is enough to support that UGC 8696 SE host an AGN. Also, since that both VLA and *e*-MERLIN can not resolve this component, no SF estimates were attempted.

### Accurately measuring the core-compact nuclear regions of UGC 8696: is it a dual AGN?

When the radio emission from a nuclear region appears to be compact, additional data should be used to verify whether the emission is physically compact (e.g. Biggs, Younger & Ivison 2010) – AGN – or a dense region dominated by pure SF and/or a compact nuclear star cluster and/or an SB. If an AGN is confirmed, it becomes necessary to separate its flux density from the total source flux density to accurately determine SFRs.

We take as an example the case of UGC 8696. Using *e*-MERLIN observations, it is clear that the core region of this source features diffuse emission embedded with the other three components. When using interferometric decomposition for a multifeature source it is almost impracticable to perform the selection of an optimized threshold as both structures co-exist and a significant fraction of the extended emission is added to  $I_1^{\text{mask}}$  (equation 6, see also Fig. 4) to be removed from the VLA image. In this sense, we apply a detailed analysis in the main nuclear region of this source using the image fitting approach in order to disentangle the diffuse flux from these other compact components.

One of the combined images of UGC 8696 N was selected, where the three components are partially resolved (using a robust parameter of  $-1.0$ ). We then performed a minimization in order to recover their deconvolved physical sizes and flux densities. After that, the nuclear diffuse emission was separated and the total integrated flux density obtained for the three compact components was  $\sim 10$  mJy (plus the  $\sim 4.5$  mJy from the SE component), while the flux density on the nuclear extended component resulted in  $\sim 30$  mJy. In Fig. D4, we provide the minimization results alongside a Monte-Carlo simulation for each one of the effective radii (e.g. N source only). We also show the radio maps for the deconvolved and convolved images, as well the resulting nuclear diffuse emission.

From this analysis, we may infer that the contribution to the total flux in the nuclear region is 10 (N) + 4.5 (SE) mJy for the core-compact components, that is, 14.5 mJy (see Fig. D4) and the contribution to nuclear diffuse emission becomes  $\sim 27$  mJy, totalling  $\sim 40$  mJy for the full diffuse emission, small scales, and larger scales. Therefore, the fraction between the compact to full diffuse flux density results in  $S_{\nu}^{\text{core-comp}}/S_{\nu}^{\text{ext-tot}} \sim 0.35$  (see Table 8a) which agrees with Veilleux et al. (2013), Díaz-Santos et al. (2017), and Lutz et al. (2020). Also, the fraction between the core-compact with the nuclear diffuse is 0.48.

There are some debates about UGC 8696 hosting a dual AGN (Iwasawa et al. 2011; U et al. 2013; Liu et al. 2019) (N and SW) and even a triplet adding the SE component (Vardoulaki et al. 2015; Kukreti et al. 2022). Considering the compactness of the SE component, its brightness temperature and observations from Carilli & Taylor (2000) and Bondi et al. (2005) one can possibly point out the existence of an AGN. For the SW component, using X-ray Iwasawa et al. (2011) and Liu et al. (2019) demonstrated evidence of a dusty, buried, and absorbed AGN. However, at 6 GHz, this component is only detected in VLA and is not visible in *e*-MERLIN, which leaves unclear its location. We require using multiwavelength radio data in a future work to pinpoint this.

### VV 250

**System description.** VV250 is a composite early-stage merging system [predecessor–merger (PM), Jin et al. 2019; M2, Larson et al. 2016] with two morphologically similar sources, having a nuclear separation of  $\sim 22$  kpc (Larson et al. 2016). The origin of the radio

emission is yet unclear: H II emission was detected (Leech et al. 2010); Vardoulaki et al. (2015) suggest that the SE source is SB in nature due to its flat spectrum while that characterization is uncertain for the NW source; Hattori et al. (2004) suggest that most of the  $H_{\alpha}$  flux originates by a compact source in the SE source and that the  $H_{\alpha}$  flux in the NW source is extended in nature.

*VV250 SE Global properties.* On our higher resolution maps, this source is faint ( $\sim 1$  mJy) in the shape of a smooth blob. However, flux density estimates are uncertain because of the low signal-to-noise ratio of the resulting map. The overall shape of the emission with a more natural weighting reveals a dense nuclear region with asymmetric structure featuring multiple blobs of emission. For VV 250, deconvolution was performed by using a sky taper function of 0.025 and 0.05 arcsec in order to improve the signal-to-noise ratio of the image in the balance of resolution, which helped to deal with PSF effects caused by *e*-MERLIN (e.g. Harrison et al. 2020; Muxlow et al. 2020). Since the nuclear region features some diffuse structures, the *e*-MERLIN half-light radius is larger than the sizes of the other sources,  $\sim 80$  pc, extending up to 158 pc. The same quantity derived from higher resolution maps provided  $\sim 166$ – $241$  pc, having a maximum extent  $R_{95} \sim 1.3$  kpc on VLA maps. The total flux density recovered by *e*-MERLIN is  $\sim 8.6$  mJy and  $\sim 18$  mJy with VLA.

*Decomposition results.* From the *e*-MERLIN observation, we can infer that the nuclear region is composed by a smooth distribution of flux, but characterized by the presence of two blobs at the centre. We report that the following decomposition results are approximations, since we have poor signal-to-noise ratio in our images. We also had to use tapering to recover the emission of this source, therefore size estimates represent upper limits.

The estimated sizes are  $R_{50} \sim 61$  pc ( $R_{50,d} \sim 64$  pc) and  $R_{95} \sim 115$  pc ( $R_{95,d} \sim 96$  pc). The nuclear diffuse emission has a circular radius of  $R_{95} \sim 113$  pc ( $R_{95,d} \sim 89$  pc deconvolved). The decomposed nuclear emission is highly uncertain. If the two mentioned blobs are considered as core-compact, the total integrated flux density is below  $\sim 6$  mJy, hence the nuclear diffuse flux density is  $\gtrsim 2$  mJy. For this source, the value for  $T_b$  is estimated to be of the order of  $0.2 \times 10^5$  K.

In VLA maps, the extent of the diffuse emission is about 0.8–1.3 kpc, with a total integrated flux density above 11.7 mJy. It was not possible to measure exactly the total extended emission in nuclear regions in combination with the diffuse VLA scales due to uncertainties in quantifying the flux density in *e*-MERLIN. Considering that the core-compact structure is represented by the two main components at the centre, we estimate that its contribution to the flux density is below 0.34. A prediction made by Díaz-Santos et al. (2017) points to a fraction below 0.05.

*SFR results.* The surface density SFR in the nuclear region of this source is lower than the others,  $\Sigma_{\text{ext-tot}}^{95} \sim 154 M_{\odot} \text{ yr}^{-1} \text{ kpc}^{-2}$  and the value for the nuclear SFR is  $\sim 7 M_{\odot} \text{ yr}^{-1}$ . We see, however, that in both these measurements, they contain a large fractional error.

If we consider all the nuclear emission as SF, the density of SF is not that high. Hence, we require additional data to investigate this further, to probe if the most compact emission is actually core-compact or pure SF in origin. We note that the morphology of this source is similar to that of NGC 1614 (e.g. Olsson et al. 2010; Herrero-Illana et al. 2014), that is, the nuclear region is driven by SF processes. Our total SFR estimated for this source is  $\sim 57 M_{\odot} \text{ yr}^{-1}$ . This value is plausible with previous measurements of  $75 M_{\odot} \text{ yr}^{-1}$  (De Looze et al. 2014),  $64 M_{\odot} \text{ yr}^{-1}$  (Vivian et al. 2012), and  $55 M_{\odot} \text{ yr}^{-1}$  (Cao et al. 2016), in contrast to an estimate of  $\sim 110 M_{\odot} \text{ yr}^{-1}$  from Howell et al. (2010) and Paspaliaris et al. (2021).

*VV250 NW Global properties.* Similarly as the SE component, NW is faint with no clear signs of a core-compact region, but in the form of a blob, it shows some evidence of a dense nuclear region. In general, for this source, our *e*-MERLIN observations are not sensitive enough to probe the origin of radio emission at the nuclear region. When using a natural weighting imaging, no emission with reasonable signal-to-noise ratio is visible in *e*-MERLIN. We made images including all the VV 250 components. However, the best images of the NW component were obtained with a combination of *uv*-tapering at 0.025 arcsec, and a Brigg’s weighting tending to natural-like values (using a robustness parameter between 1.0 and 2.0). In the case of combined data, we obtained images with *e*-MERLIN features also using the same sky-taper and a robust of  $\sim -1.0$ , which yielded a slight better image in relation to the previous case. In both cases, we obtained an emission with a smooth distribution of surface brightness, of about  $R_{50} \sim 50$  pc and  $R_{95} \sim 79$  pc, with an approximated integrated flux density of 1.5 mJy. Nevertheless, to unravel the properties of the nuclear region of VV250 NW on parsec scales, we require further observations with better sensitivity.

On larger scales, diffuse emission is clear, extending over an average radial linear distance of 1.3 kpc from the centre (with a semimajor axis of  $\sim 3.0$  kpc). The total flux density recovered by VLA is  $\sim 3.5$ .

*Decomposition results.* Using the images with a restoring beam modified by a *uv* taper of 0.025 arcsec, we were able to fit a two-component model to the *e*-MERLIN image, recovering the sizes of the blob at the nuclear region of  $R_{50} \sim 45$  pc and  $R_{50,d} \sim 26$  pc. Due to the poor signal-to-noise ratio of our images, we only obtained a crude estimate for the most compact region, ranging from  $\sim 0.5$  to  $\sim 1.0$  mJy. The full radial sizes of the nuclear diffuse component resulted in  $R_{95} \sim 98$  pc and  $R_{95,d} \sim 73$  pc, with a flux density of  $\sim 0.9$  mJy. For  $T_b$ , using the previously calculated sizes and using the flux density from the most compact component, we obtained a value smaller than  $\sim 0.1 \times 10^5$  K.

Using VLA images, we recovered the upper limits of the unresolved component to be  $R_{50,d} \sim 86$  pc and  $R_{95,d} \sim 187$  pc, which is a bit larger than the nuclear-diffuse size mapped by *e*-MERLIN. The diffuse component in VLA was modelled with one component, giving a half-light radii of  $\sim 407$  pc and with a full averaged radial extent of  $\sim 697$  pc.

*SFR results.* The nuclear SFR is about  $\sim 1.7 M_{\odot} \text{ yr}^{-1}$ , but highly uncertain. However, considering the same nature of this source as VV 250 SE and NGC 1614, we can compute the nuclear SFR considering the total radio emission, providing  $\sim 4 M_{\odot} \text{ yr}^{-1}$ , with a nuclear surface SF density of  $\sim 51 M_{\odot} \text{ yr}^{-1} \text{ kpc}^{-2}$  (again, likely uncertain). These values are reasonable if we consider that the nuclear region is purely dominated by SF. For the total SFR, considering all scales, we obtain an estimate of  $\sim 11 M_{\odot} \text{ yr}^{-1}$ . Previous calculations of SFR for VV 250 NW resulted in  $\sim 11 M_{\odot} \text{ yr}^{-1}$  (De Looze et al. 2014) and  $\sim 8 M_{\odot} \text{ yr}^{-1}$  (Cao et al. 2016; Dutta, Srianand & Gupta 2018).

## APPENDIX B: MULTI-SÉRSIC DECOMPOSITION

To conduct the analysis of the current work, we started the development of data processing tools combining functionalities with other existing astrophysical packages (e.g. MORFOMETRYKA, PETROFIT, CASA, and PYBDSF). These will facilitate the analysis of radio astronomical images, image structural decomposition, common tasks for radio interferometry (e.g. self-calibration and imaging), and upcoming features that will be implemented as we progress on

this research. Code availability, usage instructions, and additional information can be found at the GITHUB repository called MORPHEN.<sup>7</sup>

### B1 Subcomponent detection of the radio emission

To identify multiple radio components, being core-compact, blobs or extended, we approach the problem by performing a source extraction analysis from the radio emission maps. However, carrying out the identification of multiple components in radio images, especially in wide-field images from radio surveys, still presents challenges, due to the complexity of radio structures (e.g. Song et al. 2022). Additionally, fitting model components to complex or even simple image structures can be problematic if the initial parameters of the model are not well set up (see Häussler et al. 2007; Andrae, Jahnke & Melchior 2011, e.g. in optical studies), or at least, not constrained to an interval of values that represent the actual physical structure of the source.

In this work, we attempt to disentangle the radio emission into different components: core-compact/unresolved; nuclear diffuse; and large-scale diffuse emission. Below, we list the general steps behind this, to construct suitable initial conditions for the minimization, which has proved to be very effective:

(i) First, cutouts are made for all images (*e*-MERLIN, combined, and VLA) around the radio emission and centred in reference to the position of the main *e*-MERLIN component. The image sizes are large enough to enclose all the diffuse VLA emission.

(ii) Secondly, a source finding is applied to a combined image ( $I_2$ ) in order to identify the locations of relevant radio emission. These regions are labelled and sorted by total flux density (see an example in the lower left panel of Fig. 8). In this routine, the minimum subcomponent detection size (or its total number of pixels) is delimited to have the same size as the number of pixels within the restoring beam of that particular image – this helps with issues related to our oversampled VLA images.

(iii) Then, for each one of these regions, relevant structural properties can be extracted via basic photometry, such as the local peak of flux and its position, the local half-light radius  $R_{50}$  and the contour at  $R_{50}$ , which is interpreted as a possible initial guess for  $I_{50}$ . Other critical quantities are also recorded, such as the major and minor semi-axis of the emission,  $R_a$  and  $R_b$ , respectively, and the position angle, PA. To perform these initial measurements, the PYTHON packages PETROFIT (Geda et al. 2022) and SEP (Bertin & Arnouts 1996; Barbary et al. 2016) are used. To maximize run-time efficiency and minimize fitting issues due to the complexity of the mathematical approach and also sources structures, the coordinates  $(x_0, y_0)$  of the detected structures (IDs) are fixed to their detection positions, with a free interval of  $\pm 5$  pixels. Providing these initial conditions to the model-fitting minimization proved critical in the code's performance because we are relying on constraining the parameter space with intrinsic properties computed on the actual emission. This can be generalized and used for any particular astronomical image where the Sérsic model can be used as a proxy (e.g. optical studies). The only parameter that is not initially constrained in this study is the Sérsic index  $n$  (for that, see Andrae et al. 2011; Breda et al. 2019), but we keep it to  $n = 0.5$  or  $1$  in some exceptions when modelling diffuse emission.

(iv) The general case of a core-compact region is that it is surrounded by nuclear diffuse emission, for example, circumstellar

regions of SF and accretion processes. In this case, a single mathematical model may not be able to describe the emission completely. For each detected structure, a single-component fitting is performed, and then we analyse the residuals. Any significant residual flux can be linked to (nuclear) extended emission, therefore careful inspections are conducted to check if another model component must be added to the fitting, with the same coordinates as the parent ID object (see the bottom panel of Fig. 8). If that is deemed true, the minimization is repeated. Since large-scale structures are more asymmetric, the parameter range for the central coordinates of these additional components can be larger than the detected ones, usually  $\pm 30$ – $50$  pixels. Currently, this is done manually by specifying the parent ID where a new component should be added so that the emission can be successfully modelled with two or three components.<sup>8</sup>

(v) Before the fitting, additional options can be changed, such as keeping the Sérsic index fixed or not; as well as the positions of the components and providing the maximum ranges.

After the above steps, we proceed with the minimization. The fitting implementation in this work is performed with the PYTHON package LMFIT,<sup>9</sup> (Newville et al. 2014) using a non-linear least-squares minimization, based on the Levenberg–Marquardt and the Trust Region Reflective (Branch, Coleman & Li 1999) methods. Each optimization is run twice for better convergence of parameters. We use this to compute the standard errors from the covariance matrix. The parameters that can be minimized are those from equations (9) and (10):  $I_n$ ,  $R_n$ ,  $x_0$ ,  $y_0$ ,  $q$ , PA and, when requested,  $n$  and  $C$ .

Due to the complexity of radio emission, this implementation was made available online with examples. For optimization purposes, it is designed to run using standard PYTHON libraries in combination with JAX (Bradbury et al. 2018), which features auto-multiprocessing and/or CUDA GPU acceleration (if present). Comprehensive examples are provided in the online documentation.<sup>10</sup>

### B2 Fitting the deconvolved image plane

Each interferometric data has a different restoring beam, and a combined observation will have one which is intermediate to the two interferometers alone (Muxlow et al. 2005). So, for each image cleaned with different weights will have distinct restoring beam shapes. Their shapes are defined by the averaged distribution of baselines and weights. In the context of image synthesis, the beam size can be thought of as the size of the Gaussian PSF that blurs the real image of the source brightness distribution to produce what we actually see on a radio map – which means, convolution (Thompson, Moran & Swenson 2017). Therefore, accessing information from the deconvolved data would provide closer measurements to the true structure of the source, such as true sizes.

In the context of image fitting, it would be ideal to get the true physical sizes of components, instead of the convolved ones. Consider that  $\mathcal{D}$  is the observed data (radio map) and  $\mathcal{M}$  is the model fitted to it. In the image decomposition approach, one can work the minimization problem  $\min(\mathcal{D} - \mathcal{M})$  in two different ways:

<sup>8</sup>In future versions, this will be done automatically by computing a first-order residual map on the nuclear emission as well others regions. If significant residuals are present, then that is an indication that a diffuse emission component is required to be modelled altogether.

<sup>9</sup>See at <https://lmfit.github.io/lmfit-py/>.

<sup>10</sup>PYTHON notebooks, packages, and documentation are made available online at <https://github.com/lucatelli/morphen> and are expected to receive updates and be maintained in the future.

<sup>7</sup><https://github.com/lucatelli/morphen>.

(i) minimize the parameters of a convolved model such as  
 $\min(\mathfrak{D} - \mathfrak{M}) \sim 0;$  or (B1)

(ii) minimize the parameters of a deconvolved model such as  
 $\min(\mathfrak{D} - \text{PSFBEM} * \mathfrak{M}) \sim 0.$  (B2)

where PSFBEM is the elliptical PSF Gaussian representing the restoring beam of an image. In this work, we use the second approach and for that, we use the CASA function `componentlist` to generate a 2D PSF image with the same size/shape as the restoring beam and this PSF will be used subsequently during the image decomposition implementation.

### B3 Modelling the radio emission

It is known that there are degeneracy issues when fitting multiple Sérsic functions to a common region of an image (e.g De Jong et al. 2004; Andrae et al. 2011). However, multiple functions can be fitted on distinct regions. We model the radio emission of the galaxies in our sample through a combination of Sérsic functions (equation 9). In general, we have

$$\mathfrak{S}^T(R) = \sum_i^N \mathfrak{S}^i(R), \quad (\text{B3})$$

where  $N$  is the total number of model components fitted to the data. The exact  $N$  is determined by performing component extraction (labelled by IDs, lower left panel of Fig. 8) and by inspecting the continuum radio images. Typically,  $N$  is not larger than  $N = 3$ , and in Appendix B4 we further discuss a way to minimize problems associated with multiple components. After that, for each detected structure ID, we have looked into *e*-MERLIN and VLA images to spot how many structures can be characterized with such modelling. This inspection is relevant to conclude when a region can not be modelled by a single Sérsic or Gaussian function (a model component ‘COMP\_’).

When the radio emission is complex, asymmetric, and extended (i.e. not following shapes described by elementary mathematical functions) we do not attempt to achieve an accurate model by fitting multiple components. Instead, we choose to adjust a component that captures the overall shape of the emission. This leaves significant residuals, however, in this work, we analyse and quantify residual properties to understand the total output coming from faint/diffuse residual emission.

The minimization strategy is based on  $\chi^2$  provided by LMFIT in order to match the model  $\mathfrak{M}$  against the data  $\mathfrak{D}$ . To simulate a more robust model, we include in the minimization the residual map  $\mathfrak{R}$  that was generated in the interferometric deconvolution. However, we do not add the actual residual image because it is already a convolved image, and would require to obtain a deconvolved version of the residual map. Hence, we apply a random pixel shuffling transformation to the residual map. This transformation will remove the effect of convolution and therefore simulate a deconvolved background noise image, denoted by  $\mathfrak{N}_{\text{bkg}}$ ,

$$\mathfrak{N}_{\text{bkg}} = S_{\oplus} \mathfrak{R}, \quad (\text{B4})$$

where  $S_{\oplus}$  is a random shuffling operator. The critical point here is that the signal level of this mock residual is exact the same as the original residual image, so that its total flux density is conserved. We also add a flat sky component  $\mathfrak{F}$  to take into account any additional offset. Therefore, the final model image is written as

$$\mathfrak{M} = \mathfrak{S}_v^T + \mathfrak{N} + \mathfrak{F}. \quad (\text{B5})$$

The final metric for the optimization consists of  $\min(\mathfrak{D} - \mathfrak{M})$ . Note that the data image  $\mathfrak{D}$  consisting of radio emission is actually the WSCLEAN (or CASA) model convolved with the restoring beam added to the interferometric residual map, that is

$$\mathfrak{D} = \text{BEAM} * \mathfrak{M}_{\text{clean}} + \mathfrak{R}.$$

Therefore, this ensures that there are no residual flux offsets when  $\mathfrak{D}$  is subtracted from  $\mathfrak{M}$ .

### B4 Solving caveats on Multi-Sérsic image decomposition

Multi-Sérsic decomposition is known for presenting challenges during minimization and by resulting in the degeneracy of parameters (e.g. Andrae et al. 2011). Also, small perturbations of the input of initial conditions can cause large variations in the outcome optimization. To work around this issue, we have found a very suitable way to help with this minimization problem and try to minimize the effects of initial conditions on the outcome. We use basic a priori photometric information computed before the minimization, for example, via a simple Petrosian analysis (Appendix B1 and Fig. 8). In this strategy, the positions of subcomponents and their  $R_{50}$ ,  $I_{50}$ ,  $q = R_b/R_a$  and PA are calculated. This provides good starting points and constraints for the minimization, which is naturally based on intrinsic properties of the source structure. This prevents the algorithm for searching a non-physical parameter space. This is an approach that was never been done before, even in optical image decomposition. We suggest that this approach can be generalized and easily incorporated within other imaging data. We are planning a future work to conduct a deeper analysis on simulated data in order to evaluate the reliability of the method.

## APPENDIX C: SIZE RELATIONS

### C1 Relation between the Sérsic $R_n$ and the Gaussian FWHM

In order to relate the effective radius of a Sérsic function when  $n = 0.5$  (Gaussian equivalent), namely  $R_{n=0.5}$ , and the FWHM of a Gaussian, namely  $\theta$ , we can equal the Sérsic profile  $\mathfrak{S}(n, R)$  with the Gaussian distribution  $G(R)$ ,

$$G(R) = a \exp\left\{-\frac{R^2}{2c^2}\right\}, \quad \text{FWHM} \equiv \theta = 2\sqrt{2 \log 2} c \quad (\text{C1})$$

then, setting  $n = 0.5$  in equation (9), we have

$$\begin{aligned} \mathfrak{S}(n = 0.5, R) &= G(R) a \exp\left\{-\frac{R^2}{2c^2}\right\} \\ &= I_{n=0.5} \exp\left\{-b_{0.5} \left[\left(\frac{R}{R_{n=0.5}}\right)^2 - 1\right]\right\}. \end{aligned} \quad (\text{C2})$$

Since this holds for any  $R > 0$ , we can set by convenience  $R = R_{n=0.5}$ , which simplifies to

$$\frac{a}{I_{n=0.5}} = \exp\left\{\frac{R_{n=0.5}^2}{2c^2}\right\} \Rightarrow R_{n=0.5}^2 = 2c^2 \log\left(\frac{a}{I_{n=0.5}}\right). \quad (\text{C3})$$

The effective intensity  $I_n$  relates to the scaled intensity (or amplitude) of the Gaussian as

$$\begin{aligned} I_n &= I_0 e^{-bn} \quad \text{with} \quad a \equiv I_0 \\ &[\text{because } G(0) = \mathfrak{S}(n = 0.5, 0)], \end{aligned} \quad (\text{C4})$$

therefore, for  $n = 0.5$ , we have  $I_{n=0.5} = ae^{-2/3}$ . Using this and  $c = \text{FWHM}/(2\sqrt{2\log 2})$  in equation (C3), we obtain

$$R_{n=0.5} = \frac{\theta}{\sqrt{6\log 2}} \approx \frac{\theta}{2}. \quad (\text{C5})$$

So, the effective radius of a Sérsic profile with a Sérsic index equal to  $n = 0.5$  is half of the FWHM of an equivalent Gaussian function.

### C2 Deconvolved sizes

We may also express the relation between the convolved and deconvolved sizes for both FWHM and  $R_n(n = 0.5)$ . For a Gaussian-shaped radio source, when observed by a beam having semimajor and minor axes  $\theta_{\text{maj}}$  and  $\theta_{\text{min}}$  (mean beam width of  $\theta_{1/2}$ ), the relation between the true size of its major axis  $\phi_{\text{maj}}$  with its convolved semimajor size  $\varphi_{\text{maj}}$  is (e.g. Condon et al. 1998; Murphy et al. 2017)

$$\phi_{\text{maj}} = \sqrt{\varphi_{\text{maj}}^2 - \theta_{\text{maj}}^2} \quad (\text{C6})$$

and similarly for the minor axis,

$$\phi_{\text{min}} = \sqrt{\varphi_{\text{min}}^2 - \theta_{\text{min}}^2}. \quad (\text{C7})$$

The link between  $R_n$  when  $n = 0.5$ , namely  $R_{n=0.5}$ , and  $\phi$  – the associated Gaussian deconvolved FWHM – is (see equation C5)

$$R_{n=0.5} \approx \frac{\phi}{2}. \quad (\text{C8})$$

Consider now that the convolved effective radius is  $R_{n=0.5}^*$  and its deconvolved counterpart is  $R_{n=0.5}$  (as before), hence

$$R_{n=0.5} = \frac{\sqrt{4(R_{n=0.5}^*)^2 - (\theta_{1/2})^2}}{2}. \quad (\text{C9})$$

This means that  $R_{n=0.5}^* \approx \text{PSFBEAM} * R_{n=0.5}$ . Note that these relations only hold for Gaussian functions and  $n = 0.5$ . In this sense, when the brightness distribution of the radio emission is not Gaussian-shaped, we face challenges in recovering the true physical sizes. We, therefore, propose to optimize a minimization problem considering the convolution with the PSFBEAM in equation (B2) so that the best parameters of the model represents deconvolved quantities.

Usually, single core-compact radio sources follow a Gaussian distribution. Hence, if the half-light radii  $R_{50}$  can be measured in the convolved image plane via simple statistics, a good approximation is to set  $R_{50} \sim R_{n=0.5}^*$  and therefore one can obtain the approximated deconvolved half-light radii  $R_{50,d}$  via

$$R_{50,d} \approx \frac{\sqrt{4R_{50}^2 - \theta_{1/2}^2}}{2}. \quad (\text{C10})$$

This is particularly interesting since we do not require fitting model

components to the image, hence obtaining the deconvolved effective radius is straightforward.

### C3 Limits of resolution

In order to check our limits in estimating sizes, we can make some analysis using the over-resolution power that an interferometer has to resolve compact sources (Kovalev et al. 2005; Popkov et al. 2021)

$$\theta_{\text{lim}} = \theta_{\text{maj}} \sqrt{\frac{4 \ln 2}{\pi} \ln \left( \frac{\text{SNR}}{\text{SNR} - 1} \right)}, \quad \text{SNR} \approx \frac{S_p}{\sigma_{\text{image}} \sqrt{N_A - 3}}, \quad (\text{C11})$$

where  $N_A$  is the number of antennas (i.e. 6 for our  $e$ -MERLIN data<sup>11</sup>) and  $\sigma_{\text{image}}$  is the local standard deviation of the image where the radio component is.

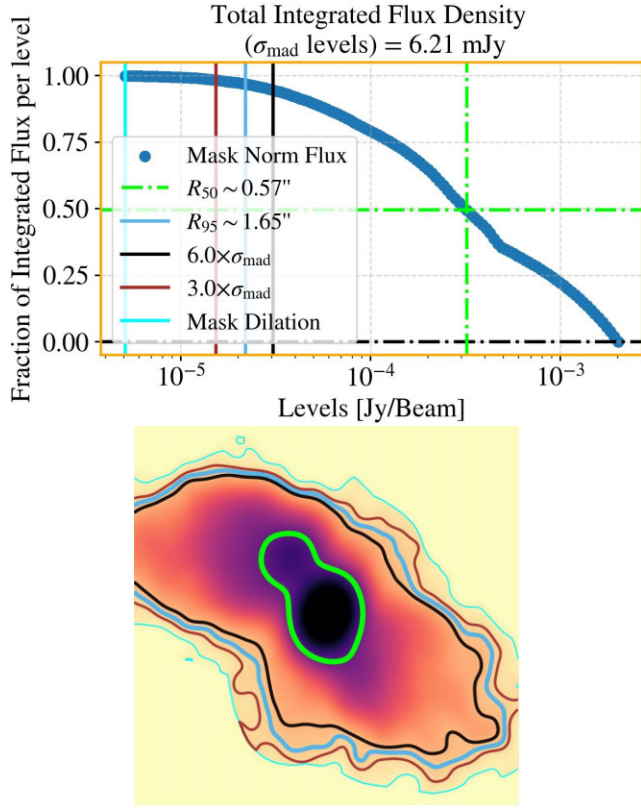
For a particular source, UGC 5101, it features a compact and faint component south-east from the nuclei, see  $e$ -MERLIN map in Fig. 3. This component has a size equal to the restoring beam size and is detectable with enough signal-to-noise ratio. The beam FWHM for this image is 0.03 arcsec (or  $\sim 24$  pc) but using equation (C11), we obtain that  $\theta_{\text{lim}} \approx 0.013$  arcsec or  $\approx 10$  pc, which is particularly the diameter of the component located at the south-east position ( $\sim 30$  pc) from the central core. This tells us that the size of that component is smaller than 10 pc. This is confirmed by the VLBI images shown in Lonsdale et al. (2003), revealing that this structure is completely resolved.

## APPENDIX D: EXTRA MATERIAL

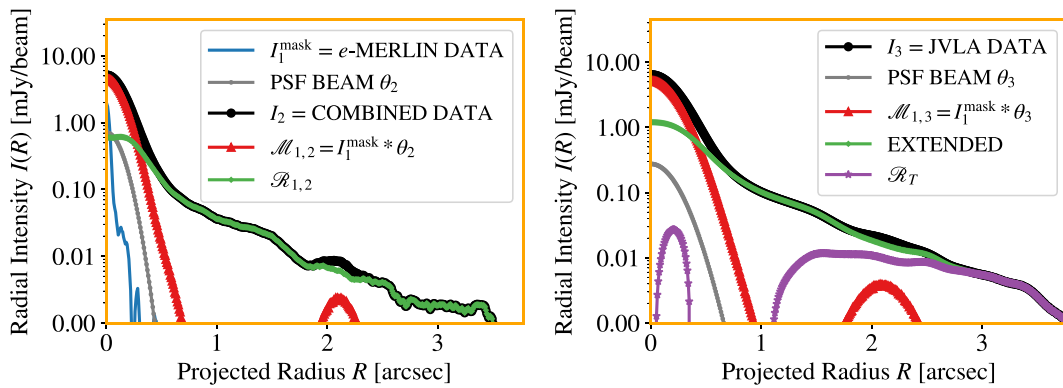
We present here extra figures complementary to the main text discussion. Notes to some figures:

- (i) In Fig. D3, we show Legacy Survey images contoured with our VLA maps, to highlight the associated emission dimensions with the optical.
- (ii) In Fig. D4, the flux densities for the diffuse and core-compact slightly differ from that of Table 8(a) because those values were computed in multiple images, and in Fig. D4, in just one image.
- (iii) In Fig. D5, the south component of UGC 8696 (would be ID.3) is absent in the plots. We just wanted to highlight the N component.

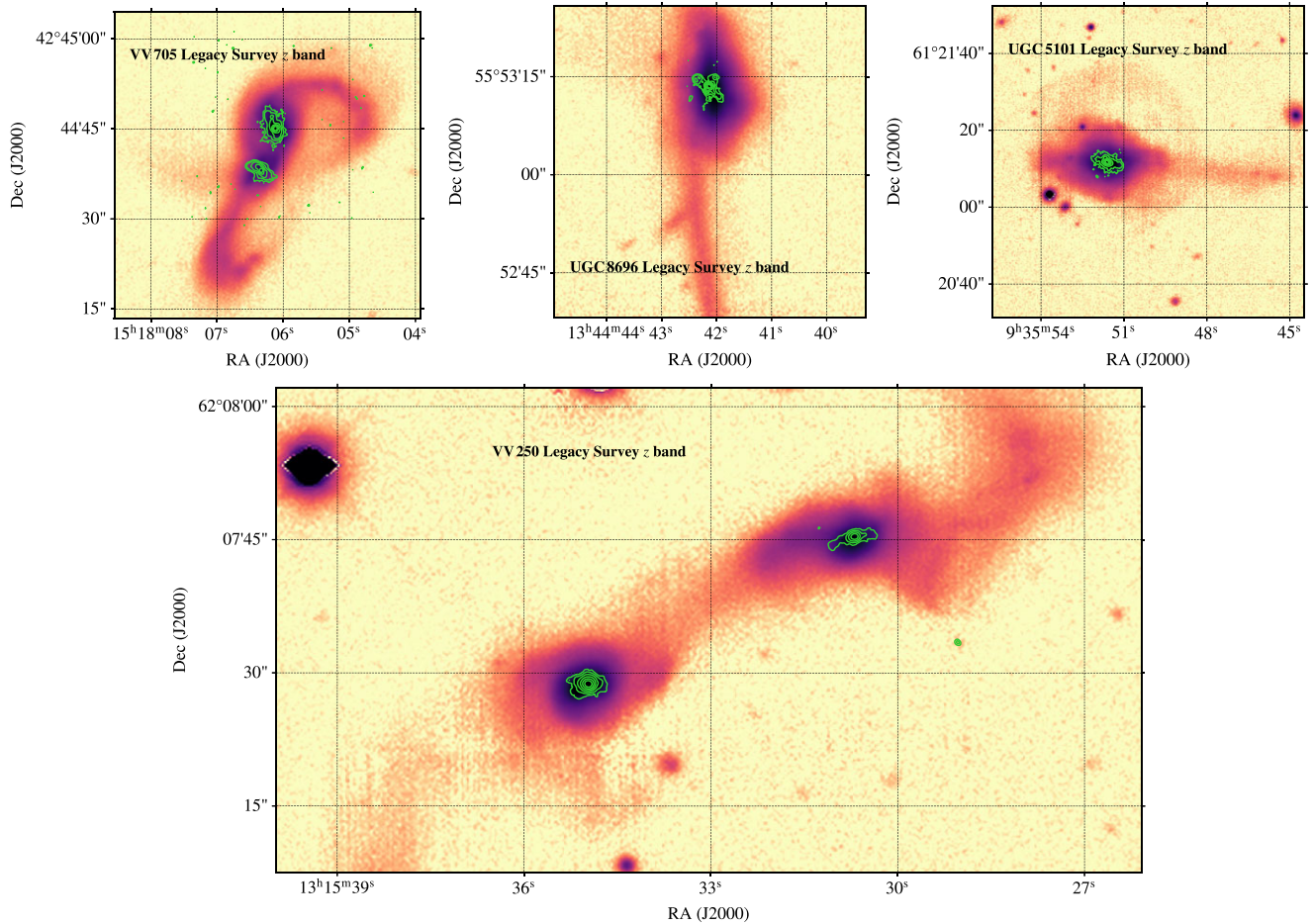
<sup>11</sup>The Lovell Telescope was not used in our observations.



**Figure D1.** Flux density estimation using the mask dilation approach (see Section 4.1). Top: total fraction of integrated flux density per level from the image. Bottom: radio emission with relevant contour levels (see below). First, a mask at  $6\sigma_{\text{mad}}$  is created (black solid contour) and then dilated (cyan solid contour). The value for sigma is taken to be the  $\sigma_{\text{mad}}$  of the cleaned residual image from deconvolution with WSCLEAN (or CASA). The lime green solid line represents the region enclosing half of the total flux density, which is converted to a representative circular radius using  $A = \pi R^2$ . The light-blue solid line represents the region of 95 percent of enclosed flux density (for these sizes, see Section 4.4). The brown line indicates the  $3\sigma_{\text{mad}}$  region.

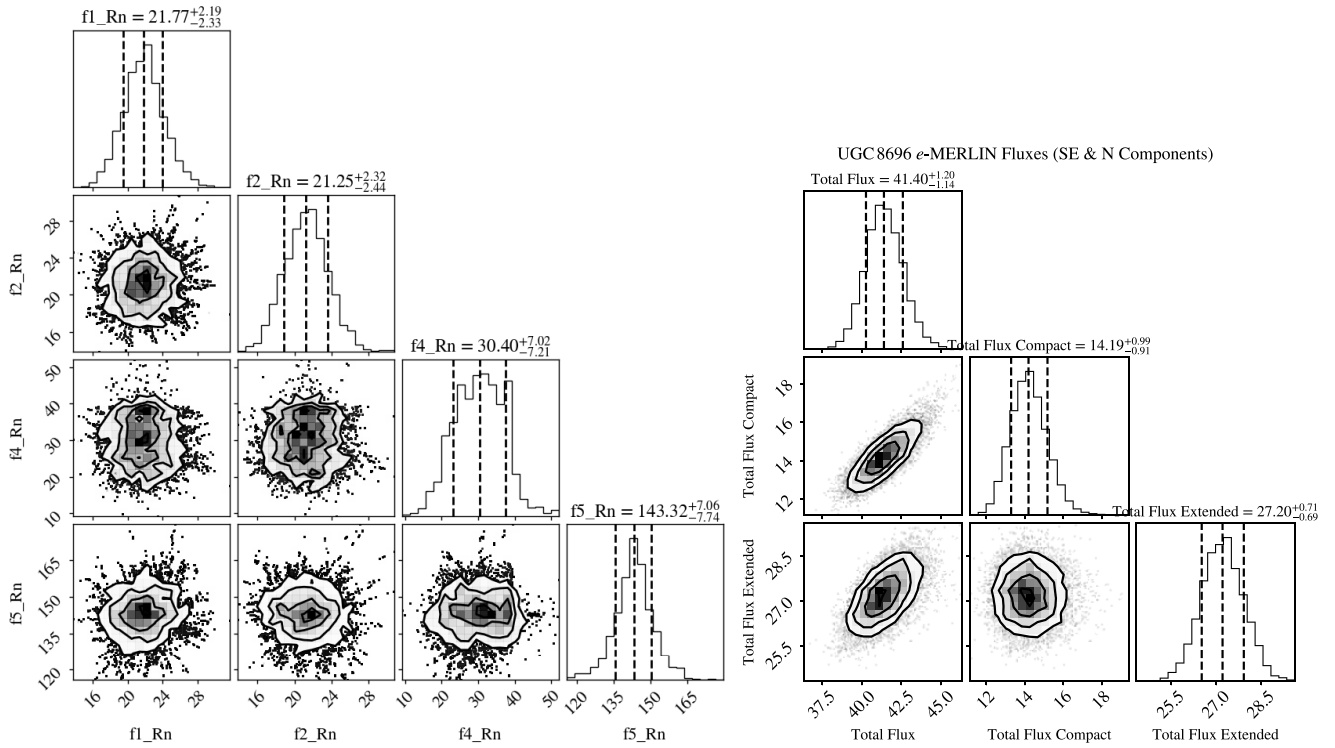


**Figure D2.** Radial profile intensities highlighting the results from equations (5), (4), (8), and (7), and Fig. 6. Each label corresponds to the same labels showed in Fig. 6.

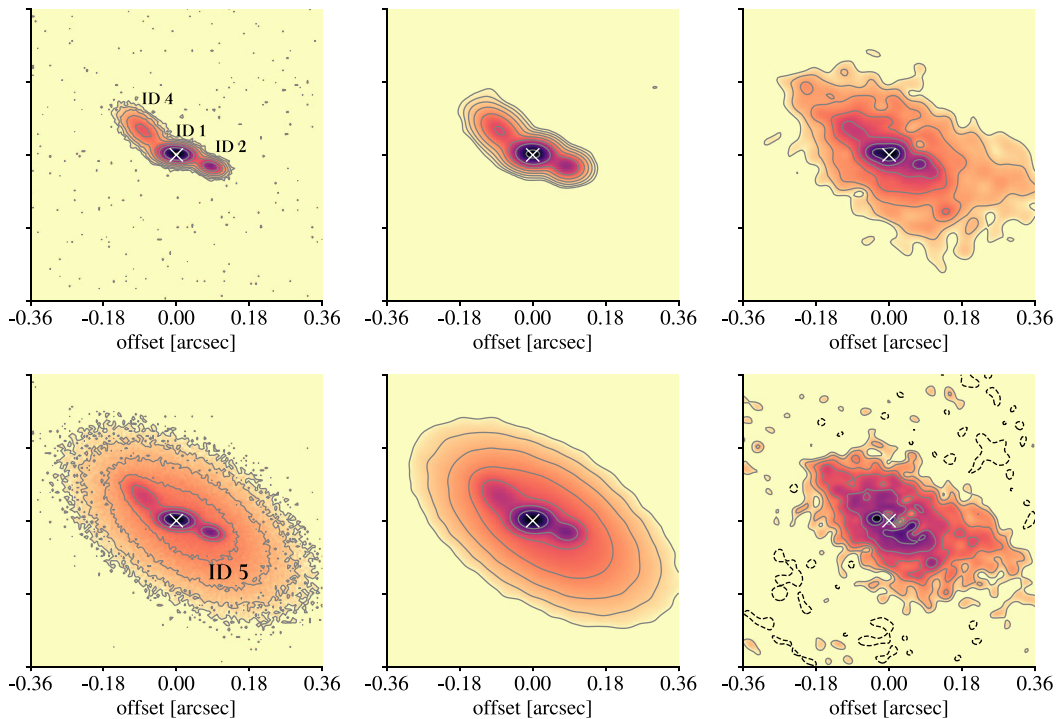


**Figure D3.** Images from the DESI Legacy Imaging Survey<sup>12</sup> at z band (of VV 705, UGC 8696, UGC 5101, and VV 250) with VLA radio contours at 6 GHz.

<sup>12</sup>The Legacy Surveys consist of three individual and complementary projects: the Dark Energy Camera Legacy Survey (DECaLS; Proposal ID no. 2014B-0404; PIs: David Schlegel and Arjun Dey), the Beijing-Arizona Sky Survey (BASS; NOAO Prop. ID no. 2015A-0801; PIs: Zhou Xu and Xiaohui Fan), and the Mayall z-band Legacy Survey (MzLS; Prop. ID no. 2016A-0453; PI: Arjun Dey). DECaLS, BASS, and MzLS together include data obtained, respectively, at the Blanco telescope, Cerro Tololo Inter-American Observatory, NSF's NOIRLab; the Bok telescope, Steward Observatory, University of Arizona; and the Mayall telescope, Kitt Peak National Observatory, NOIRLab. Pipeline processing and analyses of the data were supported by NOIRLab and the Lawrence Berkeley National Laboratory (LBNL). The Legacy Surveys project is honoured to be permitted to conduct astronomical research on Iolkam Du'ag (Kitt Peak), a mountain with particular significance to the Tohono O'odham Nation.



**Figure D4.** The Markov chain Monte Carlo (MCMC) distribution for the size model parameters (left) in terms of  $R_n$  (given in parsec) and disentangled flux densities (right) of the nuclear region of UGC 8696, featuring three core-compact components. Including the SE component of UGC 8696 (not shown in Fig. D5), the total core-compact flux density is  $\sim 14$  mJy. The nuclear diffuse component, containing a major fraction of the total flux density, is  $\sim 27$  mJy in the *e*-MERLIN image. The total multiscale extended flux density sums up to 39.9 mJy when the VLA is taken into account.



**Figure D5.** Top row, from left to right: deconvolved core-compact regions, convolved core-compact regions and the original radio map. Bottom row, from left to right: total deconvolved modelled emission, total convolved model emission, and the recovered nuclear extended emission. Total flux densities for this emission are shown in Fig. D4.

<sup>1</sup>Jodrell Bank Centre for Astrophysics, School of Physics and Astronomy, The University of Manchester, Manchester M13 9PL, UK

<sup>2</sup>Instituto de Astrofísica de Andalucía (IAA-CSIC), Glorieta de la Astronomía s/n, E-18008 Granada, Spain

<sup>3</sup>Facultad de Ciencias, Universidad de Zaragoza, Pedro Cerbuna 12, E-50009 Zaragoza, Spain

<sup>4</sup>School of Sciences, European University Cyprus, Diogenes street, Engomi, 1516 Nicosia, Cyprus

<sup>5</sup>Department of Space, Earth and Environment, Chalmers University of Technology, Onsala Space Observatory, SE-439 92 Onsala, Sweden

<sup>6</sup>Institute of Astronomy and Astrophysics, Academia Sinica, 11F of Astronomy-Mathematics Building, Taiwan, R.O.C.

<sup>7</sup>Max-Planck-Institut für Radioastronomie, Auf dem Hügel 69, D-53121 Bonn, Germany

<sup>8</sup>National Radio Astronomy Observatory, 520 Edgemont Road, Charlottesville, VA 22903, USA

<sup>9</sup>Department of Astronomy, University of Virginia, 530 McCormick Road, Charlottesville, VA 22903, USA

<sup>10</sup>INAF – Istituto di Radio Astronomia, Via P. Gobetti 101, I-40129 Bologna, Italy

<sup>11</sup>Department of Space, Earth and Environment, Chalmers University of Technology, SE-412 96 Gothenburg, Sweden

<sup>12</sup>Netherlands Institute for Radio Astronomy (ASTRON), NL-7991 PD Dwingeloo, the Netherlands

<sup>13</sup>Xinjiang Astronomical Observatory, Chinese Academy of Sciences, 150 Science 1-Street, 830011 Urumqi, China

<sup>14</sup>Department of Physics and Astronomy, University of New Mexico, Albuquerque, NM 87131, USA

This paper has been typeset from a  $\text{\TeX}/\text{\LaTeX}$  file prepared by the author.