



## **HasTEE - Programming Trusted Execution Environments with Haskell**

Downloaded from: <https://research.chalmers.se>, 2026-04-04 01:16 UTC

Citation for the original published paper (version of record):

Sarkar, A., Krook, R., Russo, A. et al (2023). HasTEE - Programming Trusted Execution Environments with Haskell. Haskell 2023 - Proceedings of the 16th ACM SIGPLAN International Symposium on Haskell, Co-located with ICFP 2023: 72-88.  
<http://dx.doi.org/10.1145/3609026.3609731>

N.B. When citing this work, cite the original published paper.



# HasTEE: Programming Trusted Execution Environments with Haskell

Abhiroop Sarkar  
Chalmers University  
Gothenburg, Sweden  
sarkara@chalmers.se

Alejandro Russo  
Chalmers University  
DPella AB  
Gothenburg, Sweden  
russo@chalmers.se

Robert Krook  
Chalmers University  
Gothenburg, Sweden  
krookr@chalmers.se

Koen Claessen  
Chalmers University  
Gothenburg, Sweden  
koen@chalmers.se

## Abstract

Trusted Execution Environments (TEEs) are hardware enforced memory isolation units, emerging as a pivotal security solution for security-critical applications. TEEs, like Intel SGX and ARM TrustZone, allow the isolation of confidential code and data within an untrusted host environment, such as the cloud and IoT. Despite strong security guarantees, TEE adoption has been hindered by an awkward programming model. This model requires manual application partitioning and the use of error-prone, memory-unsafe, and potentially information-leaking low-level C/C++ libraries.

We address the above with *HasTEE*, a domain-specific language (DSL) embedded in Haskell for programming TEE applications. HasTEE includes a port of the GHC runtime for the Intel-SGX TEE. HasTEE uses Haskell’s type system to automatically partition an application and to enforce *Information Flow Control* on confidential data. The DSL, being embedded in Haskell, allows for the usage of higher-order functions, monads, and a restricted set of I/O operations to write any standard Haskell application. Contrary to previous work, HasTEE is lightweight, simple, and is provided as a *simple security library*; thus avoiding any GHC modifications. We show the applicability of HasTEE by implementing case studies on federated learning, an encrypted password wallet, and a differentially-private data clean room.

**CCS Concepts:** • Security and privacy → Trusted computing; Information flow control; Security in hardware; • Software and its engineering → Functional languages; Domain specific languages.



This work is licensed under a Creative Commons Attribution 4.0 International License.

Haskell ’23, September 8–9, 2023, Seattle, WA, USA

© 2023 Copyright held by the owner/author(s).

ACM ISBN 979-8-4007-0298-3/23/09.

<https://doi.org/10.1145/3609026.3609731>

**Keywords:** Trusted Execution Environment, Haskell, Intel SGX, Enclave

## ACM Reference Format:

Abhiroop Sarkar, Robert Krook, Alejandro Russo, and Koen Claessen. 2023. HasTEE: Programming Trusted Execution Environments with Haskell. In *Proceedings of the 16th ACM SIGPLAN International Haskell Symposium (Haskell ’23), September 8–9, 2023, Seattle, WA, USA*. ACM, New York, NY, USA, 17 pages. <https://doi.org/10.1145/3609026.3609731>

## 1 Introduction

Trusted Execution Environments (TEEs) are an emerging design of hardware-enforced memory isolation units that aid in the construction of security-sensitive applications [39, 53]. TEEs have been used to enforce a strong notion of *trust* in areas such as confidential (cloud-)computing [66, 11], IoT [34] and Blockchain [10]. Intel and ARM each have their own TEE implementations known as Intel SGX [29] and ARM TrustZone [4], respectively. Principally, TEEs provide a *disjoint* region of code and data memory that allows for the physical isolation of a program’s execution and state from the underlying operating system, hypervisor, and I/O peripherals. For terminology, we shall use the term *enclave* (adopted from Intel) to refer to the isolated region of code and data and its trusted computing base (TCB).

TEEs, despite their strong security guarantees, have seen limited adoption in software development owing to several challenges. Firstly, TEEs often present an *awkward and low-level programming model* [14]. For instance, Intel provides a C/C++ interface to program SGX that requires *partitioning* the program’s state into trusted and untrusted components and dividing the entire logic into two separate software projects (Section 2)—a complex and error-prone process that could lead to data leakage. From a security perspective, the use of C/C++ APIs can open further opportunities to exploit well-known memory-unsafe vulnerabilities such as return-oriented programming (ROP) [54] in applications running inside TEEs [40]. Secondly, *current TEE programming models are insufficient to enforce security policies*. Applications should

be written in a way such that they do not accidentally reveal confidential information. Furthermore, inputs and outputs to an enclave must be correctly encrypted, signed, decrypted, and verified to protect against malicious hosts. Thirdly, *little support is given to migrate legacy applications inside enclaves*. Applications inside enclaves often rely on their own Operating System (OS) since they cannot trust the one in the host machine. Library OS-based approaches exist to provide this functionality. However, for legacy applications written in high-level languages relying on non-trivial runtimes, the porting of the runtime becomes a challenging task.

Efforts have been made to address these challenges. The work by [21] introduces GoTEE, a modification of the Go programming language with support for *secure routines* that are executed inside enclaves. In GoTEE, the authors heavily modify the Go compiler and extend the language to support new TEE-specific abstractions that helps to automatically partition an application. GoTEE does not provide any control over how sensitive information moves within the application, which could enable accidental data leaks. In a similar spirit, [43] introduce  $J_E$ , a subset of Java with support for enclaves.  $J_E$  focuses on providing information-flow control (IFC) to ensure that the code does not leak sensitive data by accident or by coercion of a malicious host.  $J_E$  uses a sophisticated compilation pipeline to first partition the application and then uses another compiler to check that sensitive information is not leaked. Virtualization-based solutions, such as AMD SEV [2], attempt to alleviate the effort required to port legacy applications. However, the trade-off is that the TCB becomes larger and the granularity to identify sensitive data becomes much coarser.

Our contribution through this paper is *HasTEE*, a domain-specific language (DSL) embedded in Haskell for programming TEE applications. HasTEE integrates TEE-specific abstraction and semantics while hiding low-level hardware intricacies making it hardware neutral! Additionally, HasTEE offers IFC to prevent accidental leakage of sensitive data. Owing to its embedding in Haskell, developers can use familiar abstractions such as high-order functions, monads, and a limited set of I/O operations to write applications in a conventional manner. This design choice enables seamless integration with all of the existing Haskell features. Compared to the previous work, HasTEE is lightweight, simple, and is provided as a *simple security library*; thus avoiding any GHC [31] compiler modifications!

### 1.1 HasTEE by Example

Listing 1 presents a sample password checker application written using HasTEE.

```

1pwdChkr :: Enclave String -> String -> Enclave Bool
2pwdChkr pwd guess = fmap (== guess) pwd
3
4passwordChecker :: App Done
5passwordChecker = do

```

```

6  passwd <- inEnclaveConstant "secret"
7  efunc  <- inEnclave $ pwdChkr passwd
8  runClient $ do -- Client code
9    liftIO $ putStrLn "Enter your password"
10   userInput <- liftIO getLine
11   res      <- gateway (efunc <@> userInput)
12   liftIO $ putStrLn ("Login returned " ++ show res)

```

Listing 1. A password checker written in HasTEE

The distinction between the trusted and untrusted parts of the application is done via the type system that encodes the former as the `Enclave` type (line 1) and the latter as the `Client` type (type inferred in line 8).

The function `pwdChkr` takes a sensitive string located in the enclave (`Enclave String`), a public string from the client host (`String`) and produces a sensitive Boolean in the enclave (`Enclave Bool`). Line 6 holds the secret string that we want to protect (`inEnclaveConstant`). Line 7 uses the `inEnclave` call to obtain a reference to the function `pwdChkr` located in the enclave. The function `gateway` (line 11) is responsible for transmitting the collected arguments to the enclave function, and bringing the result back to the client. The `gateway` function acts as an interface between the enclave and non-enclave environment. The untrusted *host client* is in charge of driving the application, while the *enclave* is assigned the role of a computational and/or storage resource that services the client's requests. HasTEE connects an application (`passwordChecker`) to Haskell's `main` method using the `runApp :: App a -> IO a` function that executes the application. From an IFC perspective, lines 6 and 7 correspond to labelling, i.e., establishing, which inputs are sensitive for the program—an activity that is part of the TCB. In general, HasTEE code starts by labelling the sensitive input with the `inEnclave` primitive. Subsequently, the client code is compelled to manipulate secrets in a *secure* manner. In this setting, *secure* means that no sensitive information in the enclave gets leaked except that it has been obtained via the primitive `gateway`. The HasTEE API is explained in Section 4.2, and the semantics are discussed in Section 4.3.

### 1.2 Contributions

#### *A type-safe, secure, high-level programming model.*

The HasTEE library enables developers to program a TEE environment, such as Intel SGX, using Haskell - a type-safe, memory-managed language whose expressive type system can be leveraged to enforce various security constraints. Additionally, HasTEE allows programming in a familiar client-server style programming model (Section 4.2 and 5.2), an improvement over the low-level Intel SGX APIs.

**Automatic Partitioning.** A key part of programming TEEs, partitioning the trusted and untrusted parts of the program is done automatically using the type system (details in Section 3 and 4.3). Crucially, our approach does not require any modification of the GHC compiler and can be adapted

to other programming languages, as long as their runtime can run on the desired TEE infrastructure.

**Information Flow Control.** Drawing inspiration from restricted IO monad families in Haskell, we designed an Enclave monad that prevents accidental leaks of secret data by TEE programmers (Section 5.3). Hence, our Enclave monad enables writing applications with a relatively low level of trust placed on the enclave programmer.

**Portability of Haskell’s runtime.** We modify the GHC runtime, without modifying the compiler, to run on SGX enclaves. This enables us to host the complete Haskell language, including extensions, supported by GHC 8.8 (Section 5.1).

**Demonstration of expressiveness.** We illustrate the practicality of the HasTEE through three case studies across different domains: (1) a Federated Learning example (Section 6.1), (2) an encrypted password wallet (Section 6.2) and (3) a *differentially-private* data clean room (Section 6.3). The examples also demonstrate the simplicity of TEE development enabled by HasTEE.

## 2 Background

**Intel Software Guard Extensions (SGX).** Intel Software Guard Extensions (SGX) [29] is a set of security-related instructions supported since Intel’s sixth-generation Skylake processor, which can enhance the security of applications by providing a *secure enclave* for processing sensitive data. The enclave is a disjoint portion of memory separate from the DRAM, where sensitive data and code reside, beyond the influence of an untrusted operating system and other low-level software.

Intel offers an SGX SDK for programming enclaves. The SDK requires dividing the application into trusted and untrusted parts, where sensitive data resides in the trusted project. It provides specialized function calls called *ecall* for enclave access and an *ocall* API for communication with the untrusted client. The boundary between the client and enclave is defined using an *Enclave Description Language (EDL)*. The SDK utilizes a tool called *edger8r* to parse EDL files and generate two *bridge* files. These files ensure secure data transfer between projects through *copying* instead of sharing via pointers, preventing potential manipulation of the enclave’s state. Fig 1 shows the SDK’s programming model.

Application developers working with enclaves aim to minimize the Trusted Computing Base (TCB) by keeping the operating system and system software outside the enclave. The SGX SDK offers a restricted C standard library implementation (*tlibc*) for essential system software. Programming SGX enclaves involves understanding the complex control flow between trusted and untrusted components. Enforcing SGX’s programming model on typical software projects can be challenging, and the limited *tlibc* library restricts running applications beyond those written in vanilla C/C++.

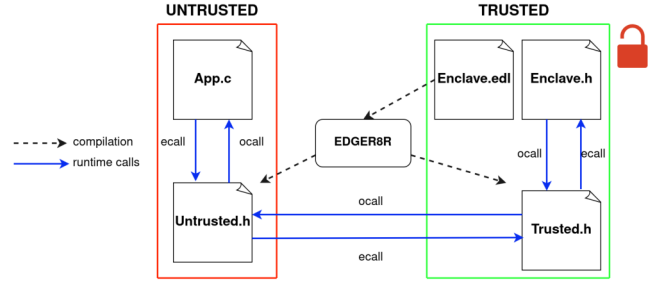


Figure 1. Intel SGX SDK Programming Model

## 3 Key Idea: A Typed DSL for Enclaves

### 3.1 The Programming Model and Partitioning

HasTEE supports the automatic partitioning of programs by utilizing a combination of the type system to identify the enclave and a conditional compilation tactic to provide different semantics to each component. The compilation tactic was first used in *Haste.App* [18], to partition a single program into a Client and Server type. Fig 2 shows the partitioning procedure at a high level.

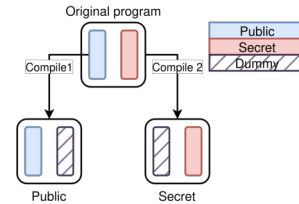


Figure 2. The HasTEE partitioning scheme

Importantly, this approach does not require any compiler extensions or elaborate dependency analysis passes to distinguish between the underlying types. The codebase involved in other complex partitioning approaches [21, 43] becomes part of the Trusted Computing Base (TCB), creating a larger TCB. In contrast, our approach does not add any partitioning code to the TCB. Fig 3 shows the partitioned software stack in the HasTEE approach.

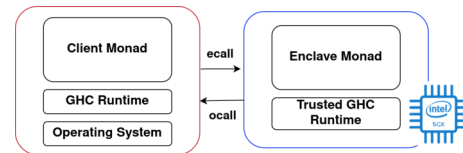


Figure 3. The untrusted (left) and trusted (right) software

Post-partitioning, the client-server-style programming model is used for programming the enclave. In this model, the client takes on the primary role of driving the program and utilizes the enclave as a computational and/or storage resource. The source program, written in Haskell, benefits from

type safety, while HasTEE internally handles the message transfer between the client and enclave memory at runtime.

### 3.2 Information Flow Control on Enclaves

Being a Haskell library enables HasTEE to tap into the library-based Information Flow Control techniques in Haskell [50, 49, 12]. The IFC literature distinguishes between sensitive and non-sensitive computations via monads indexed with security levels [50], e.g., Sec H and Sec L, where security levels H and L are assigned to sensitive and public information, respectively. Public information can flow into sensitive entities but not in the other way around. We have a similar security-level hierarchy between the Enclave and Client monads, respectively. Accordingly, we design the Enclave monad such that it restricts the possible variants of I/O operations. Internally, the Enclave monad constrains the scope of side-effecting operations to protect the confidentiality of data within the enclave (details in Section 5.3). Furthermore, HasTEE demands to explicitly mark where information is being sent back to the client (gateway), thus clearly indicating where to audit and control information leakages. Due to the security-critical nature of the Enclave monad, we include a trust operator, which is similar to the endorse function found in IFC literature.

### 3.3 Trusted GHC Runtime

One of the key challenges in allowing Haskell programs to run on TEE platforms is to provide support for the GHC Haskell Runtime [36] itself. A Haskell program relies on the runtime for essential tasks such as memory allocation, concurrency, I/O management, etc. The GHC runtime heavily depends on well-known C standard libraries, such as `glibc` on Linux [23] and `msvcrt` on Windows [38]. In contrast, the Intel SGX SDK provides a much more restricted `libc` known as `tlibc`.

This results in the fact that several `libc` calls used by the GHC runtime such as `mmap`, `madvise`, `epoll`, `select` and 100+ other functions become unavailable. Even the core threading library used by the GHC runtime, `pthread`, has a much more restricted API on the SGX SDK. To solve this conundrum, we have patched portions of the GHC runtime and used functionalities from a library OS, Gramine [58], to enable the execution of GHC-compiled programs on the enclave.

### 3.4 TEE Independence

Finally, HasTEE provides an abstraction over low-level system APIs offered by TEEs. As a result, the principles applied in programming Intel SGX should translate to the programming of other popular TEEs, such as the ARM TrustZone.

## 4 Design of HasTEE

### 4.1 Threat Model

We begin by discussing the threat model of the HasTEE DSL. HasTEE has the very same threat model as that of Intel SGX. In this model, only the software running inside the enclave memory is trusted. All other application and system software, such as the operating system, hypervisors, driver firmware, etc., are considered compromised by an attacker. A very similar threat model is shared by a number of other work based on Intel SGX [21, 11, 5, 35].

In this work, we enhance the application-level security firstly by using a memory-safe language, Haskell, and secondly use the Enclave monad to introduce information flow control. Our implementation strategy of loading the GHC runtime on the enclave allows us to handle Iago attacks [13] (see Section 5.1). We trust the underlying implementation of the SGX hardware and software stack (such as `tlibc`) as provided by Intel. Known limitations of Intel SGX such as denial-of-service attacks and side-channel attacks [62] are beyond the scope of this paper.

An ideally secure development process should include auditing the code running on the enclave either through static analyses or manual code reviews or both. The conciseness of Haskell codebases should generally facilitate the auditing process. However, the mechanisms for fail-proof audits are beyond the scope of this paper as well.

### 4.2 HasTEE API

We show the core API of HasTEE in Fig 4. The functions presented operate over three principal Haskell data types: (1) Enclave, (2) Client, and (3) App. All three types are instances of the Monad typeclass, which allows for the use of `do` notation when programming with them. One of the key differences in functionality provided by the Client and Enclave monads is that Client allows for arbitrary I/O, whereas Enclave only provides restricted I/O. More on the latter in Section 5.3. The App monad sets up the infrastructure for communication between the Client and Enclave monad. We show a simple secure counter written using most of the API in Listing 2.

Listing 2 internally gets partitioned into the trusted and untrusted components via conditional compilation. In line 3, `liftNewRef` is used to create a secure reference initialised to the value 0. Followed by that, the computation to increment this value inside the enclave is given in lines 4 - 7. Applying `inEnclave` on the enclave computation (line 4) yields the type App (Secure (Enclave Int)). The Secure type is HasTEE's internal representation of a closure. Line 8 uses the critical gateway function to actually execute the enclave computation within the enclave memory and get the result back in the client memory. This resulting value, `v`, is displayed to the user.

```

-- mutable references
liftNewRef :: a → App (Enclave (Ref a))
readRef    :: Ref a → Enclave a
writeRef   :: Ref a → a → Enclave ()

-- get reference to function inside enclave
inEnclave :: Securable a ⇒ a → App (Secure a)

-- runs the Client monad
runClient :: Client () → App Done

-- used for function application on the enclave
gateway :: Binary a ⇒ Secure (Enclave a) → Client a
(<@>) :: Binary a ⇒ Secure (a → b) → a → Secure b

-- call this from `main` to run the App monad
runApp :: App a → IO a

```

Figure 4. The core HasTEE API

```

1 app :: App Done
2 app = do
3   enclaveRef <- liftNewRef 0 :: App (Enclave (Ref Int))
4   count <- inEnclave $ do
5     r <- enclaveRef
6     v <- readRef r
7     writeRef r (v + 1) >> return v :: Enclave Int
8   runClient $ gateway count >>=
9     \v -> liftIO $ print $ "Counter's #" ++ show v
10
11 main = runApp app

```

Listing 2. A secure counter written in HasTEE (types annotated for clarity)

The only function from Fig. 4 not used in Listing 2 is the `<@>` operator, used to collect arguments that are sent to the enclave. For example, an enclave function, `f`, that accepts two arguments, `arg1` and `arg2`, would be executed as `gateway (f <@> arg1 <@> arg2)`. Parameters to secure functions are copied to the enclave before the function is invoked, and results are copied from the enclave to the client before the client resumes execution. To do this copying, `gateway` and `<@>` has a `Binary` constraint on the types involved. This specifies that the values of the types involved have to be serialisable. Listing 1 in Section 1 shows a concrete usage of the operator. We have larger case studies in Section 6.

### 4.3 Operational Semantics of HasTEE

We provide big-step operational semantics of the HasTEE DSL. Note, we illustrate the semantics using an interpreter written in Haskell that shows the transition of the client as well as the enclave memory as each operators gets interpreted. We show our *expression language* and the abstract machine values to which we evaluate below:

```
type Name = String
```

```

data Exp = Lit Int | Var Name | Fun [Name] Exp
         | App Exp [Exp] | Let Name Exp Exp | Plus Exp Exp
         | InEnclave Exp | Gateway Exp | EnclaveApp Exp Exp --HasTEE

```

```

data Value = IntVal Int | Closure [Name] Exp Env
           | SecureClosure Name [Value] | ArgList [Value] | Dummy
           | Err ErrState -- Error conditions

```

The `Exp` language above is a slightly modified version of lambda calculus with the restriction of allowing only fully applied function application. This restriction is done to reflect the nature of the HasTEE API, which through the type system, only permits fully saturated function applications for functions residing in the enclave. The lambda calculus language is then extended with the core HasTEE operators.

In the `Value` type, the `Closure` constructor, owing to saturated function application, captures a list of variable names and the environment. Notable in the `Value` type is the `SecureClosure` constructor that represents a closure residing in the enclave memory. This constructor does not capture the body of the closure as the body could hold any hidden state that lies protected within the enclave memory. The `SecureClosure` value is used by the `Gateway` function to invoke functions residing in the enclave.

The `ArgList` constructor supports the `<@>` operator that collects enclave function arguments. Lastly, the `Dummy` value is used as a placeholder for operators lacking semantics depending on the client or the enclave memory. For instance, the `Gateway` function has no meaning inside the `Enclave` monad, it is only usable from the `Client` monad. The `Dummy` crucially enables the conditional compilation trick in HasTEE by acting as a placeholder for meaningless functions in the respective client and enclave memory.

Our evaluators will show transition relations operating on two distinct memories that maps variable names to values - the enclave memory and the client memory.

```

type ClientEnv = [(Name, Value)]
type EnclaveEnv = [(Name, Value)]

```

Accordingly, we define two evaluators - `evalEnclave` (Fig. 5) and `evalClient` (Fig. 6). The complete evaluator run in two passes. In the first pass, it runs a program and loads up the necessary elements in the enclave memory and then in the second pass, the loaded enclave memory is additionally passed to the client's evaluator.

Two helper functions, `genEncVar` and `evalList` are not shown for concision. They generate unique variable names and fold over a list of expressions respectively. The extended version of the paper [52] contains the complete, typechecked semantics as runnable Haskell code.

We use Listing 3 to illustrate how the enclave, as well as the client memory, evolves as a program gets evaluated. Our semantic evaluator operates in two passes. In the first pass, the `evalEnclave` evaluator from Fig. 5 is run. Fig. 7a shows the state of the enclave environment after the evaluator has completed evaluating Listing 3. Notably, the variable `y` maps

```

1  evalEnclave :: (MonadState StateVar m)
2      => Exp -> EnclaveEnv -> m (Value, EnclaveEnv)
3  evalEnclave (Lit n) env = pure (IntVal n, env)
4  evalEnclave (Var x) env = pure (lookupVar x env, env)
5  evalEnclave (Fun xs e) env =
6      pure (Closure xs e env, env)
7  evalEnclave (Let name e1 e2) env = do
8      (e1', env') <- evalEnclave e1 env
9      evalEnclave e2 ((name,e1'):env')
10 evalEnclave (App f args) env = do
11     (v1, env1) <- evalEnclave f env
12     (vals, env2) <- evalList args env1 []
13     case v1 of
14     Closure xs body ev ->
15         evalEnclave body ((zip xs vals) ++ ev)
16     _ -> pure (Err ENotClosure, env2)
17 evalEnclave (Plus e1 e2) env = do
18     (v1, env1) <- evalEnclave e1 env
19     (v2, env2) <- evalEnclave e2 env1
20     case (v1, v2) of
21     (IntVal a1, IntVal a2) -> pure (IntVal (a1 + a2), env2)
22     _ -> pure (Err ENotIntLit, env2)
23 evalEnclave (InEnclave e) env = do
24     (val, env') <- evalEnclave e env
25     varname <- genEncVar
26     let env'' = (varname, val):env'
27     pure (Dummy, env'')
28 -- the following two are essentially no-ops
29 evalEnclave (Gateway e) env = evalEnclave e env
30 evalEnclave (EnclaveApp e1 e2) env = do
31     (_, env1) <- evalEnclave e1 env
32     (_, env2) <- evalEnclave e2 env1
33     pure (Dummy, env2)

```

Figure 5. Operational Semantics of the Enclave

```

1 testProgram = let m = 3 in
2     let f = λ x -> x + m in
3     let y = inEnclave f in
4     gateway (y <@> 2)

```

Listing 3. A simple program for illustrating the operational semantics of HasTEE

to a value with no semantic meaning, as the evaluator is already running in the secure memory.

In the second pass, the environment from Fig. 7a is additionally passed as a state variable to the evaluator `evalClient` from Fig. 6. Note the different value mapped to the variable `y` in Fig 7b. `EnclaveApp` is evaluated on lines 25-34 in Fig 6. It generates the value `SecureClosure "EncVar0" [Lit 2]`.

Notable is the evaluation of the gateway call on line 4 of Listing 3. The semantics for this evaluation are in lines 12-24 of Fig 6. The evaluator upon finding a reference `EncVar0` with no semantics in the client memory (Fig 7b) looks up `EncVar0` in the enclave environment (Fig 7a) and finds a Closure with a body. Crucially, **it evaluates the Closure by invoking the `evalEnclave` function on line 21 of Fig. 6 using the enclave environment.** This part models

```

1  evalClient :: (MonadState StateVar m)
2      => Exp -> ClientEnv -> m (Value, ClientEnv)
3
4  -- evalClient for Lit, Var, Fun, Let, App, Plus not
5  -- shown as they behave the same as evalEnclave above
6  evalClient (InEnclave e) env = do
7      (_, env') <- evalClient e env
8      varname <- genEncVar
9      let env'' = (varname, Dummy):env'
10     pure (SecureClosure varname [], env'')
11 evalClient (Gateway e) env = do
12     (e', env1) <- evalClient e env
13     case e' of
14     SecureClosure varname vals -> do
15         enclaveEnv <- gets encState
16         let func = lookupVar varname enclaveEnv
17         case func of
18         Closure vars body encEnv -> do
19             (res, enclaveEnv') <-
20                 evalEnclave body ((zip vars vals) ++ encEnv)
21             pure (res, env1)
22         _ -> pure (Err ENotClosure, env1)
23     _ -> pure (Err ENotSecClos, env1)
24 evalClient (EnclaveApp e1 e2) env = do
25     (v1, env1) <- evalClient e1 env
26     (v2, env2) <- evalClient e2 env1
27     case v1 of
28     SecureClosure f args ->
29         case v2 of
30         ArgList vals ->
31             pure (SecureClosure f (args ++ vals), env2)
32         v -> pure (SecureClosure f (args ++ [v]), env2)
33         v -> pure (ArgList [v,v2], env2)

```

Figure 6. Operational Semantics of the Client

$$\begin{array}{l}
 m \mapsto 3 \\
 f \mapsto \text{Closure ["x"]} (x + m) [m \mapsto 3] \\
 \text{EncVar}_0 \mapsto \text{Closure ["x"]} (x + m) [m \mapsto 3] \\
 y \mapsto \text{Dummy}
 \end{array}
 \quad
 \begin{array}{l}
 m \mapsto 3 \\
 f \mapsto \text{Closure ["x"]} (x + m) [m \mapsto 3] \\
 \text{EncVar}_0 \mapsto \text{Dummy} \\
 y \mapsto \text{SecureClosure "EncVar}_0" []
 \end{array}$$

(a) Enclave Environment

(b) Client Environment

Figure 7. (a) gets loaded during the first evaluator pass, and the Client Environment remains empty. In the second pass, (b) gets loaded while having access to the memory (a), as can be seen in Fig 6.

how the SGX hardware switches to the enclave memory when executing the secure function `f` rather than the client memory. An important point is generating an identical fresh variable name, `EncVar0`, that the client uses to identify and call the functions in the enclave memory.

#### 4.4 Practical Security Analysis

In what follows, we perform a security analysis of HasTEE. We start by making explicit that the only communication from the enclave back to the host client is primitive gateway. In this regard, we have the following claim capturing a

(progress-insensitive [7]) non-interference property. Intuitively, this property states that (side-effectful) programs do not leak information except via their termination behavior.

**Proposition 4.1** (Non-interference). *Given a HasTEE program  $p :: \text{Enclave } a \rightarrow \text{App Done}$ , where  $p$  does not use primitive gateway, and two enclave computations  $e1 :: \text{Enclave } a$  and  $e2 :: \text{Enclave } a$ , then  $p \ e1$  and  $p \ e2$  perform the same side-effects in the host client.*

This proposition states that in  $p$  the public effects on the host client cannot depend on the content of the argument of type  $\text{Enclave } a$ . The veracity of this proposition can be proven from the semantics of gateway, which is the only primitive calling `evalEnclave` from `evalClient` Fig. 6. If non-interference does not hold in the context of developing HasTEE, it could indicate the presence of vulnerabilities in the system. For example, it could suggest that data is being leaked into the host environment due to an error in the partitioning process of the HasTEE compiler. Alternatively, it might imply that certain side effects within the enclave are unintentionally revealing data back to the host, contrary to our expectations. Non-interference serves as an important initial security condition in the development of HasTEE as it helps identify and address numerous vulnerabilities that may arise during the process.

When it comes to reason about programs with the primitive gateway, we need to reason about IFC *declassification* primitives (or intended ways to release sensitive information) [51] and how to avoid exploiting it to reveal more information than intended. [25] utilizes *delimited release* as the security policy. This security policy extends information-flow control beyond non-interference. It allows for explicit points of controlled information release, called *escape hatches*, where sensitive information can be sent to public channels. This policy stipulates that information may only be released through escape hatches and no additional information is leaked. The function gateway is our escape hatch. If we apply delimited release to HasTEE, then host clients can always learn what the function gateway  $e$  returns, given that expression  $e$  evaluates to the same value in the initial states  $st1, st2 :: \text{Enclave } a$  given to a program  $p$ —a condition to avoid misusing escape hatches to reveal more information than intended. Our case studies (Section 6) satisfy delimited release.

Automatically enforcing delimited release or robust declassification [42] imposes severe restrictions in either the information being declassified or how declassification primitives are used. Hence, we leave enforcing such security policies as future work. Instead, our DSL explicitly requires marking the points where information is sent back to the client (i.e., gateway), making it clear where to audit and control information leakages.

## 5 Implementation of HasTEE

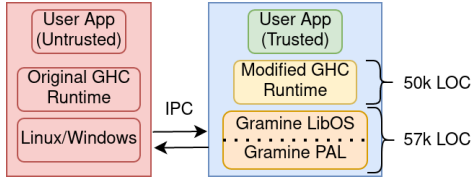
### 5.1 Trusted GHC Runtime

One of the crucial challenges in implementing the HasTEE library is enabling Haskell programs to run within an Intel SGX enclave. All Haskell programs compiled via the Glasgow Haskell Compiler (GHC), rely on the GHC runtime [36] for crucial operations such as memory allocation and management, concurrency, I/O management, etc. As such, it is essential to port the GHC runtime in order to run Haskell programs on the enclave.

The GHC runtime is a complex software that is heavily optimized for specific platforms, such as Linux and Windows, to maximize its performance. For instance, on Linux, the runtime relies on a wide variety of specialised low-level routines from a C standard library, such as `glibc` [23] or `musl` [19], to provide essential facilities like memory allocation, concurrency, and more. The challenge lies in porting the runtime due to the limited and constrained implementation of the C standard library in the SGX SDK, called `tlIBC` [30]. Specifically, `tlIBC` does not support some of the essential APIs required by the GHC runtime, including `mmap`, `madvise`, `munmap`, `select`, `poll`, a number of `pthread` APIs, operations related to timers, file reading, writing, and access control, and 100+ other functions.

Given the magnitude of engineering effort required to port the GHC runtime, we fall back on a library OS called Gramine [58]. Gramine internally intercepts all `libc` system calls within an application binary and maps them to a Platform Abstraction Layer (PAL) that utilizes a smaller ABI. In Gramine’s case, this amounts to only 40 system calls that are executed through dynamic loading and runtime linking of a larger `libc` library, such as `glibc` or `musl`. Importantly, to protect the confidentiality and integrity of the enclave environment, Gramine uses a concept known as *shielded execution*, pioneered by the Haven system [11], where a library is only loaded if its hash values are checked against a measurement taken at the time of initialisation. Shielded execution further protects applications against *Iago attacks* [13] in Gramine.

However, there are additional difficulties in loading the GHC runtime on the SGX enclave via Gramine. Owing to Gramine’s diminished system ABI, it has a dummy or incomplete implementation for several important system calls that the runtime requires. For instance, the absence of the `select`, `pselect`, and `poll` functions, which are used in the GHC IO manager, required us to modify the GHC I/O manager to manually manage the polling behavior through experimental heuristics. Similarly, the critical `mmap` operation in GHC uses specific flags (`MAP_ANONYMOUS`) that require modification. In addition, other calls, such as `madvise`, `getrusage`, and timer-based system calls, also require patching. We hope to quantify these modifications’ performance in the future.



**Figure 8.** The high-level overview of communication between the untrusted and trusted parts of the app

After the GHC runtime is loaded onto an enclave, communication between the untrusted and trusted parts of the application effectively occurs between two disjoint address spaces. Communication between them can happen over any binary interface, emulating a remote procedure call. Our early prototype stage implementation uses an inter-process communication (IPC) call to copy the serialised data (Fig 8). A production implementation should communicate via the C ABI using Haskell’s Foreign Function Interface (FFI), as this would be significantly faster than an IPC.

The Gramine approach requires 57,000 additional lines of code in the Trusted Computing Base (TCB) [58]. However, this is still an improvement over traditional operating systems, like Linux, with a TCB size of 27.8 million lines of code [33].

## 5.2 HasTEE Library

The API of the HasTEE library was already shown (Figure 4) and discussed in Section 4.2. The principal data types, `Enclave` and `Client`, have been implemented as wrappers around the IO monad, as shown below:

```
1 newtype Enclave a = Enclave (IO a) -- data constructor not
  exported
2 type Client = IO
```

A key distinction is that the `Enclave` data type does not instantiate the `MonadIO` typeclass, as a result of which arbitrary IO actions cannot be lifted inside the `Enclave` monad. This is to ensure that the enclave does not perform leaky IO operations such as writing to the terminal. These are effective operations that may leak information, which may not be rolled back. However, the `Enclave` monad does instantiate a `RestrictedIO` typeclass that will be discussed in the following section. The conditional-compilation-based partitioning technique is achieved by having dummy implementations of certain data types in one of the modules, while the concrete implementation of those types is defined in the second module. We give an example of this using two different data types from the API.

<pre>1 -- Enclave.hs 2 data Secure a = SecureDummy 3 4 type Ref a = IORef a</pre>	<pre>1 -- Client.hs 2 data Secure a = 3   Secure CallID [ByteString] 4 type Ref a = RefDummy</pre>
---	--

A notable aspect of the API is the `Securable` typeclass, which constrains the `inEnclave` function and enables it to label functions with any number of arguments as residents of the enclave memory. The `Securable` typeclass accomplishes this using a well-known typeclass trick in Haskell, used to represent statically-typed variadic functions such as `printf` [8]. In general, `Securable` characterises functions of the form  $a_1 \rightarrow \dots \rightarrow a_n \rightarrow \text{Enclave } b$ .

The operational semantics presented in Section 4.3 should provide an intuition for the core implementation techniques used in the library. The complete HasTEE project has been open-sourced<sup>1</sup>. More implementation details can be found in the `Haste.App` paper [18].

## 5.3 Information Flow Control for Enclaves

The HasTEE library, being written in Haskell, allows using language-based Information Flow Control (IFC) techniques available in Haskell [50]. IFC approaches in Haskell aim to protect the confidentiality of data by encapsulating computations within a `Sec` monad. Typically, the monad employs a lattice of *labels* [15] to model various security levels and then enforces policies on how data can flow between the levels. For a two-label lattice, where confidential data is marked with `H` and public data with `L`, a security policy known as *non-interference* is to prevent information flow from the secret to public channels [24]. In other words,  $L \sqsubseteq L, H \sqsubseteq H, L \sqsubseteq H$ , but  $H \not\sqsubseteq L$ , where  $\sqsubseteq$  indicates the *flows to* relation.

A similar scenario arises in HasTEE, where the `Enclave` monad can be compared to a security-critical `Sec H` monad that attempts to prevent information leakage to a public `Sec L` channel represented by the `Client` monad. Enforcing the non-interference policy in this scenario would imply that no data can flow out of the `Enclave` monad to the `Client`, which would make the enclave very restrictive for any real-world use cases. As such, the IFC literature relaxes the non-interference policy by the means of *declassification* [51], to allow controlled data leak from `H` to `L`.

In the HasTEE API, the gateway `:: (Binary a) => Secure (Enclave a) -> (Client a)` function is an *escape hatch* [28] that allows the enclave to leak *any* data to the client. We prioritise the usability of the API and trust that the enclave programmer will make the gateway call when they are certain they want to intentionally leak information to a public channel. However, there is a hidden line of defence in the gateway function. If the programmer wishes to send any user-defined data type to the untrusted client, they need to provide an instance of the `Binary` typeclass. Writing this typeclass instance for some confidential data type, such as a private key, equips the confidential data with the capacity to leave the enclave boundary, which should be done in a highly controlled manner.

<sup>1</sup><https://github.com/Abhiroop/EnclaveIFC>

Besides the gateway function, the Enclave monad has occasional requirements to interact with general I/O facilities like file reading/writing or random number generation. For such operations, the Enclave monad would need a MonadIO instance in Haskell to perform any I/O operations. However, as discussed in the previous section, we do not provide the lenient MonadIO instance to the Enclave monad but instead, use a RestrictedIO typeclass to limit the types of I/O operations that an Enclave monad can do.

RestrictedIO, shown in Listing 4, is a collection of typeclasses that constrains the variants of I/O operations possible inside an Enclave monad. For instance, if a programmer, through the usage of a malicious library, mistakenly attempts to leak confidential data through a network call, the typeclass would not allow this.

```

1 type RestrictedIO m = (EntropyIO m, UnsafeFileIO m) -- other
   typeclasses not shown
2
3 class EntropyIO (m :: Type -> Type) where
4   type Entropy m :: Type
5   genEntropyPool :: m (Entropy m)
6
7 class UnsafeFileIO (m :: Type -> Type) where
8   untrustedReadFile :: FilePath -> m (Untrusted String)
    
```

Listing 4. The Restricted IO typeclass

This approach is invasive in that it restricts how a library (malicious or otherwise) that interacts with a HasTEE program conducts I/O operations. For instance, we had to modify the HsPaillier library [60] that used the genEntropy function for random number generation. Initially, the library could use the Haskell IO monad freely, but to interact with a package written in HasTEE, it had to be modified to use the more restricted type class constraint (EntropyIO) for its *effectful* operations. This limits potential malicious behaviour within the library. Notably, our changes involve only five lines of code that instantiate the type class and generalize the type signature of effectful operations.

Another aspect of IFC captured in our system is the notion of *endorsement* [28], which is the dual of declassification. Endorsement is concerned with the integrity, i.e., trustworthiness, of information. In HasTEE, we utilize endorsement to ensure that the integrity of secrets is not compromised by data being introduced into the enclave.

HasTEE allows file reading operations inside the Enclave monad, which can potentially corrupt the enclave’s data integrity. To control this, HasTEE provides two forms of file reading operation - (1) untrusted file read and (2) trusted encrypted file reads. For (1), data read from untrusted files require manual endorsement via the `trust :: Untrusted a -> a` operator (where `Untrusted a` is a wrapper over the data read). This provides an additional check before untrusted data interacts with the trusted domain.

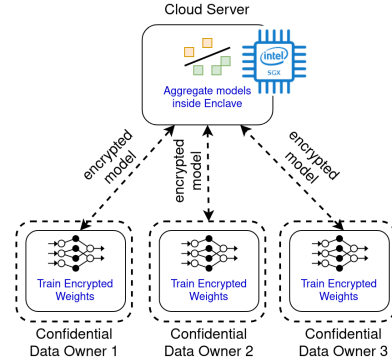


Figure 9. A Federated Learning setup where the data owners are protecting their data and the ML model owner is protecting their model. The training with encrypted weights can be done using homomorphic encryption.

For point (2), HasTEE relies on an Intel SGX feature known as *sealing*. Every Intel SGX chip is embedded with a unique 128 bit key known as the Root Seal Key (RSK). The SGX enclave can use this RSK to encrypt trusted data that it wishes to persist on untrusted media. This process is known as sealing; HasTEE provides a simple interface to seal as well as unseal the trusted data being persisted, as shown below:

```

1 data SecurePath = SecurePath String
2
3 securefile :: FilePath -> SecurePath
4 securefile fp = "/secure_location/" <> fp -- path hidden
5
6 readSecure :: SecurePath -> Enclave String
7 writeSecure :: SecurePath -> String -> Enclave ()
    
```

In the above, the `writeSecure` operation corresponds to *ciphertext declassification* [6], while `readSecure` to an operation that applies automatic endorsement if the file can be decrypted successfully by the enclave RSK. If an attacker were to locate the secure location, the worst possible outcome would be the deletion of the file. However, the contents of the file cannot be read or modified outside the enclave, so the attacker would not be able to access the sensitive information stored within.

## 6 Case Studies

### 6.1 Federated Learning

Federated Learning is an emerging *privacy-preserving* machine learning [1] approach that allows multiple parties to train a model without sharing the raw training data. A typical federated learning setup involves multiple decentralized edge devices holding local datasets, training a model locally and then aggregating the trained model on a cloud server. Fig. 9 shows the desired setup.

```

1 data SrvSt =
2   SrvSt { publicKey :: PubKey, privateKey :: PrvKey
3         , updWts :: Vector Double, numClients :: Int
4         , wtsDict :: Map Epoch [Vector CipherText] }

```

Listing 5. The Federated Learning server state

The setup in Fig. 9 above is facilitated by a combination of TEEs and homomorphic encryption. Homomorphic Encryption (HE) [20] is a form of encryption that enables direct computation on encrypted data, revealing the computation result only to the decryption key owner. We emulate the very same setup for our case study where we have two mutually distrusting parties -

- **Confidential data owner.** This party wants to protect its confidential data. A real-life example would be a hospital containing confidential patient data.
- **ML model owner.** This party wants to protect their intellectual property (the ML model) from the data owners as well as the cloud provider. They encrypt their model when sending it to the data owners and allows them to use only homomorphic encryption for operating on the model.

The above setup only requires the cloud server supporting Intel SGX technology so that even mobile devices can participate in training as a worker role. We can very conveniently model this entire setup as three clients and a server with an enclave in HasTEE. For illustration purposes, we will use GHC's threads to represent the three clients instead of three separate data owner machines.

Listing 5 models the server's state. Note that the weights are kept in plaintext form. The enclave state holds both its public and private keys. However, only the public key should be allowed to move to the client. We enforce this by not providing an instance of the Binary typeclass for the private key. If untrusted modules try to attack such enforcement by adding new instances to Binary, or even providing overlapping ones to override the behaviour of overloaded methods, then Safe Haskell [57] will indicate GHC to not compile the code. Haskell is unique in terms of having an extension like Safe Haskell. Safe Haskell enforces sandboxing for trusted code by banning extensions that introduce *loopholes* and compromise type-safety or module abstraction (often for the sake of performance). As discussed in Section 5.3, the lack of a Binary instance for the privateKey will prevent the enclave programmer from accidentally leaking the security-critical private key.

Listing 6 shows the API exposed to the client machine. Instead of the complex SGX\_ECALL machinery, our API is expressed in idiomatic Haskell. Calling any function *f* from the record *api* with an argument *arg* in this API is expressed simply as `gateway ((f api) <@> arg)`.

```

1 type Accuracy = Double
2 type Loss     = Double

```

```

3 data API = API {
4   aggregateModel :: Secure (Epoch -> Vector CipherText ->
5     Enclave (Maybe (Vector CipherText))),
6   validateModel  :: Secure (Enclave (Accuracy, Loss)),
7   getPublicKey   :: Secure (Enclave PubKey),
8   reEncrypt      :: Secure (CipherText -> Enclave CipherText)}

```

Listing 6. The Federated Learning client API

Listing 7 shows the main ML model training loop. A few functions have been elided for brevity, but the key portions of the client-server interaction in HasTEE should be visible. The Config type holds the state containing encrypted weights sent from the cloud server, the learning rate, the current epoch number and the public key. After each epoch it updates the weights to the new aggregated value (Line 12). The value *x'* is the data set that the data owners are protecting and *y* is the result of the learning algorithm. The `adjustModelWithLearningRate` function (body elided, line 6) takes the computed gradient (line 5) and tries to converge on the desired result.

On line 7 the server is communicated to aggregate models spread across different clients, with the server returning the encrypted updated weights *wt'*. We use a wrapper over gateway, called `retryOnEnclave` (body elided), to allow the server to move in lock step with all the clients. Then in line 8, the server is communicated again to collect the accuracy and loss in the ongoing epoch number, which gets displayed in line 9. Finally, the loop continues in line 10.

```

1 handleSingleEpoch :: API -> CurrentEpochNum -> MaxEpochNum
2   -> Matrix Double -> Vector Int -> Config -> Client
3   Config
4 handleSingleEpoch api n m x' y cfg'
5 | n == m = return cfg'
6 | otherwise = do
7   grad <- computeGradient api cfg' x' y
8   cfgNew <- adjustModelWithLearningRate api
9             (cfg' { iterN = n }) grad
10  wt' <- retryOnEnclave $ (aggregateModel api) <@> n
11             <@> (weights cfgNew)
12  (acc, loss) <- gateway (validateModel api)
13  printClient $ " Iteration no: " <> show n <>
14  " Accuracy: " <> show acc <> " Loss : " <> show loss
15  handleSingleEpoch api (n+1) m x' y
16             (cfgNew { weights = wt' })

```

Listing 7. The key model training loop

Listing 7 above features a complex control flow with at least two interactions visible in the loop itself. Internally, `computeGradient` and `adjustModelWithLearning` both communicate with the enclave, calling the `reEncrypt` function to remove noise from the homomorphic encryption operation. HasTEE can represent a fairly complex, asynchronous control flow as simple Haskell function calls.

In terms of Information Flow Control, there are two important aspects in this case study. Firstly, the `RestrictedIO`

typeclass constrains potentially malicious libraries from misbehaving. For example, consider the library `HsPaillier` [60], which implements the Paillier Cryptosystem [44] for partial homomorphic encryption. All effectful operations from this library, such as `genKey :: Int -> IO (PubKey, PrvKey)`, need to be rewritten for them to be usable within the `Enclave` monad. The following snippet shows our typeclass instantiation and a sample type signature change needed inside the library.

```
1instance (IO ~ m) => EntropyIO m where
2  type Entropy m = EntropyPool
3  genEntropyPool = createEntropyPool
4
5-- genKey :: Int -> IO (PubKey, PrvKey) -- original type
6genKey :: (Monad m, EntropyIO m) => Int -> m (PubKey, PrvKey)
```

The second aspect of IFC arises when the client machine queries the server for accuracy and loss by asking it to validate the model. On the server side, the enclave has to read a file with test data. This test data resides outside of the enclave and is potentially an attack vector. In order to not inadvertently trust such an exposed source, the enclave uses the `untrustedReadFile` function from the `RestrictedIO` typeclass (Listing 4). The file is read as an `Untrusted String` and requires explicit programmer *endorsement* via the `trust` operator for the compiler to typecheck the program.

Overall the case study constitutes only 500 lines of code. It naturally fits into the client-server programming model, and the usage of Haskell provides type safety and enables IFC-based security.

## 6.2 Encrypted Password Wallet

For this case study, we use HasTEE to implement a secure password wallet that stores authentication tokens in encrypted form on the disk. An authentication token can be retrieved from the wallet if the right master password is supplied. The definition of a password wallet used by the case study follows in Listing 8.

```
1-- | A single entry of authentication tokens
2data Item = Item { title :: String, username :: String,
3  password :: Password } deriving (Show, Read)
4-- | The secure wallet
4data Wallet = Wallet { items :: [Item], size :: Int,
5  masterPassword :: Password} deriving (Show, Read)
```

**Listing 8.** The definition of a password wallet as a regular Haskell data type.

The `Show` and `Read` instances are used to convert a wallet to and from a string. This allows us to write the wallet to disk, and by writing to a secure file path we ensure that the stored wallet is encrypted, as described in section 5.3. By omitting a `Binary` instance we ensure that the wallet is not inadvertently leaked to the client directly. The code in Listing 9 implements the functions that store and load the wallet. We emphasize that the code does not need to

```
1-- | Secure file path to the wallet
2wallet :: SecureFilePath
3wallet = secureFile "wallet.seal"
4
5-- | Try to load the secure wallet into the enclave
6loadWallet :: Enclave (Maybe Wallet)
7loadWallet = do b <- doesSecureFileExist wallet
8  if b then do contents <- readSecure wallet
9  return $ readMaybe contents
10 else return Nothing
11
12-- | Store the wallet on disk in encrypted form
13saveWallet :: Wallet -> Enclave ReturnCode
14saveWallet w = writeSecure wallet (show w) >> return Success
```

**Listing 9.** The code that storing and loading the encrypted wallet. Programmer do not need to manage encryption keys.

explicitly reason about encryption and decryption, except for defining the secure file path.

Our password wallet has the following features - (1) adding an authentication token, (2) retrieving a password, (3) deleting a token and (4) changing the master password. It is designed as a command-line utility where the commands are handled by an untrusted client and the passwords are protected by the enclave. The complete implementation is roughly 200 lines of Haskell code.

The hardware-enforced security provided by our secure wallet makes it a natural fit for designing wallets that are protected by biometrics. A similar approach is used on modern iPhones, where passwords are stored in a secure enclave [3] to ensure confidentiality, and the user's biometric data is used as the master password. In our case, the usage of a high-level language like Haskell enables expressing this relatively complex application concisely.

## 6.3 Data Clean Room with Differential Privacy

A *Data Clean Room* (DCR) [9] is a technology that provides aggregated and anonymised user information to protect user privacy while providing advertisers and analytic firms with non-personally identifiable information to target a specific demographic with advertising campaigns and analytics-based services.

DCRs compute and release aggregated results based on the user data. To prevent attackers from compromising individual user information from aggregate data (via statistical techniques), DCRs employ *differential privacy* [16]. Differential privacy adds calibrated noise to the aggregate data making it computationally hard for attackers to compromise individual data. The noise calibration can be adjusted for increased privacy (more noise) or increased accuracy (less noise).

Our third case study implements a *differentially-private* DCR within an SGX enclave using HasTEE. The DCR consists

of record, `User`, containing fields such as `name`, `occupation`, `salary`, `gender`, `age`, etc. The `User` record is encrypted before being provisioned to the DCR, after which we use the *Laplace Mechanism* [17] when performing counting queries to add noise to the result. The mechanism introduces noise by sampling a Laplace distribution. The complete Laplace mechanism code can be found in the extended version of the paper [52].

The DCR does not provide a `Binary` instance for the `User` record to ensure that it is not transferred to the enclave via plain serialisation. Instead, we expose functions that encrypt and decrypt users.

The Laplace Mechanism for adding noise requires a source of randomness. Here, we use Haskell’s `System.Random` package, which internally reads from `/dev/urandom`. For production environments, a more cryptographically secure source of randomness is required. We extend the `RestrictedIO` (Section 5.3) interface to allow this operation as long as the programmer *endorses* the file read.

Consider a sample query to test how many individuals in a data set have a salary within a specific range.

```
1 salaryWithin :: Integer -> Integer -> User -> Bool
2 salaryWithin l h u = 1 <= salary u && salary u <= h
```

The HasTEE code for the DCR executing this query is shown in Listing 10. Lines 3 to 8 specify the API of the data clean room. The DCR’s API supports (1) initialisation, (2) fetching of the public key, (3) provisioning user data to the enclave, and (4) executing the salary query. Line 8 is used to generate some arbitrary users (for testing), after which the client code takes over. The client initializes the DCR and fetches its public key. After this, the users are encrypted and sent to the DCR. On line 15 the salary query is executed in the DCR, and then the result is printed.

Generating arbitrary users to test the setup is done purely for illustration purposes. In a more faithful implementation, the client would relay the public key to data owners that would then send already encrypted user records to the client, which provisions them to the DCR. Owing to HasTEE’s client-server programming model and the use of a high-level language like Haskell, the implementation becomes very compact with roughly 200 LOC.

## 7 Evaluations

### 7.1 Discussion

In contrast to development on the Intel C/C++ SGX SDK, HasTEE’s high-level programming model entirely abstracts away the complexity of dealing with the low-level `edl` files in the SGX SDK. The remote procedure calls that happen between the untrusted client and trusted enclave are typechecked in Haskell, unlike the SGX SDK. The benefits of high-level of abstraction can also be seen in the password wallet example, where functions `readSecure` and `writeSecure` (Listing 9) relieves developers from the burden of key management.

```
1 app :: App Done
2 app = do
3   ref  <- liftNewRef undefined
4   initSt <- inEnclave $ initEnclave ref 0.1
5   pkey  <- inEnclave $ getPublicKey ref
6   prov' <- inEnclave $ provisionUserEnclave ref
7   lm    <- inEnclave $ laplaceMechanism ref $
8         salaryWithin 10000 50000
9   dataset <- liftIO $ sequence $ replicate 500
10              (generate arbitrary)
11   runClient $ do
12     gateway $ initSt    -- initialize enclave state
13     key <- gateway pkey -- enclaves public key
14     mapM_ (\u -> do ct <- encryptUser u key
15              gateway $ prov' <@> ct) dataset
16              -- provision users
17     result <- gateway lm -- run the salary query
18     liftIO $ putStrLn $ concat ["res: ", show result]
```

**Listing 10.** The client running the `salaryWithin` query over the data set in the data clean room.

Furthermore, HasTEE warns a program against accidental data leaks and can enforce stronger compile-time guarantees than Intel C/C++ SGX SDK. For instance, in all three case studies, the lack of the `Binary` type-class constraint would, by construction, prevent accidental leakage of the secret data from the enclave. All three case studies restrict the I/O operations possible in the `Enclave` monad by the type-class `RestrictedIO`. Notably, in the federated learning example, we adapted the homomorphic encryption library to limit the effects possible in the `IO` monad.

### 7.2 Performance Evaluations

Our evaluations were conducted on an Azure Standard DC1s v2 (1 vcpu, 4 GiB memory) SGX machine. We use the password wallet case study as the canonical example to present performance evaluations across different parameters. We chose this example as it covers all the major aspects of the HasTEE API, such as protecting the confidentiality of data across the memory as well as the disk.

**Memory Overhead.** We show the memory consumption of our modified GHC runtime, sampled across 100 runs, where a sample was collected every second.

Memory	RSS	Virtual Size	Disk Swap
At rest	19,132 KB	287,920 KB	0 KB
Peak	20,796 KB	290,032KB	0 KB

Although the memory usage of HasTEE will certainly vary across applications, these numbers provide a general estimate of the trusted GHC runtime’s space usage. The Resident Set Size (RSS) indicates that the application fits within 20 MB at peak usage. RSS is an overestimate of memory usage as it includes the memory occupied by shared libraries as

well. As a result, we can be certain that our application fits within the Enclave Page Cache limit (Section 2) of 93 MB.

**Latency.** We measure the latency and throughput for an instance of password retrieval, that includes - (i) an enclave crossing to call the trusted runtime, (ii) standard GHC execution time, (iii) encrypted file load, (iv) file decryption, (v) file read, and (v) a second enclave crossing to return the result.

Our measurements show that using the Linux `send/recv` call for enclave crossing results in a *60 milliseconds overall latency*. As our current socket-based communication is a proof-of-concept, it incurs a substantial overhead compared to native SGX enclave crossings. As a baseline, we measured the latency of an encrypted password retrieval in unmodified GHC (file encrypted with `gpg` [22]). The baseline number comes out to be 0.6 milliseconds showing an overall 100x slowdown. Note that an average SGX ECALL operation incurs at least a 10x slowdown via the native SDK [21]. We believe switching to native ECALLs has the potential to improve our latencies.

**Throughput.** In terms of throughput, HasTEE is able to handle on average 11 requests for password retrieval per second. Again, this number has the potential for further improvement by switching to native SGX ECALLs.

We currently present coarse-grained measurements of the various metrics but envision future work, where more fine-grained parameters, such as the correlation between the GC pauses across the two runtimes can be presented. Section 7.3 provides a qualitative comparison of HasTEE against GoTEE and  $J_E$ .

### 7.3 Comparing HasTEE to GoTEE and $J_E$

Table 1 presents a comparison between HasTEE and its two closest counterparts - GoTEE [21] and  $J_E$  [43]. While both GoTEE and  $J_E$  had to modify the respective compilers, HasTEE required no modifications to the compiler. The specific runtime used by  $J_E$  is not mentioned in the paper [43]; however, it suggests that no modification of the runtime was required, as it was run on a large virtualized host - SGX-LKL [45]. In contrast, the runtimes for HasTEE and GoTEE required modification. GoTEE required significant modifications to the Golang runtime system to enable communication between the trusted and untrusted memory.

Both GoTEE and  $J_E$  use sophisticated static analysis passes and program transformations to partition a program into its two components. In contrast, HasTEE's conditional compilation-based approach is much simpler, which is beneficial when it comes to security. Having less and simpler code makes it easier to verify for correctness. Notably, the purity of Haskell enables the user to inspect the type of a function and infer that it is naturally confined whenever a function is side-effect free. Inferring the confinement of a pure function is much more challenging in imperative languages like Java and Go.

## 8 Related Work

**Managed programming languages.** While there are imperative and object-oriented languages with TEE support (e.g., Go-based [21], and Java-based [43, 59]), HasTEE is (to the best of our knowledge) the first functional language running on a TEE environment. The Rust-SGX [63] project provides foreign-function interface (FFI) bindings to the C/C++ Intel SGX SDK. Different from HasTEE, Rust-SGX does not aim to introduce any programming model or IFC to protect against leakage of sensitive data. Instead, Rust-SGX's main goal is application-level memory safety when programming with the low-level SGX SDK. HasTEE provides memory safety by the virtue of running Haskell, a memory-safe language, on the enclaves. TrustJS [27] takes a similar FFI-based approach as Rust-SGX for programming enclaves with JavaScript. An important project in this space is the WebAssembly (WASM) initiative [48]. There have been WASM projects, both academic, such as Twine [37], as well as commercial, such as Enarx [46], aimed at allowing WASM runtimes to operate within SGX enclaves. Our initial approach was to use the experimental Haskell WASM backend [61] to run Haskell on SGX enclaves. However, the aforementioned runtimes are not supported by GHC and lack several key features required for loading Haskell onto an enclave.

**Automatic partitioning.** HasTEE has a seamless program partitioning and familiar client-server-based programming model for enclaves. HasTEE's lightweight partitioning approach is inspired by the Haste.App library [18]—a library to write web applications in Haskell and deploy parts of it into JavaScript on the web browser. The most well-known automatic partitioning tool for C programs on an SGX enclave is Glamdring [35]. The general idea of partitioning a single program has been studied as multitier programming [65]. Among the existing approaches to multitier programming, HasTEE provides a lightweight alternative that does not require any compiler modification or elaborate dataflow analysis to partition the program.

**Application development.** There have been attempts to virtualize entire platforms within the enclave memory to reduce the burden of dealing with the two-project programming model of Intel SGX. Haven [11] virtualizes the entire Windows operating system as well as an entire SQL server application running on top of it. SCONE [5] virtualizes a Docker container instance within an SGX enclave. The libraryOS Gramine [58], which is used in this work, is an example of lightweight virtualization.

AMD's TEE system, AMD SEV [2], is a native virtualization based approach. While it eases development, virtualization can result in drastically increasing the size of the TCB. We chose to apply a libraryOS approach for HasTEE in order to have a TCB of 57k lines of code (Gramine). As a future work, we can move away from Gramine and make the GHC runtime a standalone library inside the SGX enclave.

**Table 1.** Comparison of HasTEE, GoTee, and  $J_E$ . We specify the core components involved in the Trusted Computing Base in all three frameworks.

Framework	HasTEE	GoTEE	$J_E$
IFC support	Standard declassification	None	Robust declassification
Partitioning scheme	Type-based	Process-based	Annotation-based
Modified compiler	No	Yes	Yes
Modified runtime system	Yes	Yes	No
Trusted Components	GHC compiler, GHC runtime, Gramine	GoTEE compiler, GoTEE runtime	Java parser and partitioner, Jif compiler, JVM, SGX-LKL[45]
Programming model	Client-server	Synchronous Message-Passing	Using the object-framework provided by Java

**Information Flow Control.** HasTEE draws inspiration from the work on static IFC security libraries (e.g., [12, 50, 49]). Such approaches relies on the purity of Haskell to detect and stop malicious behaviour. HasTEE can support IFC in a dynamic manner [56] by adapting the interpretation of the `Enclave` type to be a runtime monitor rather than just a wrapper for IO, where gateway performs security checks when sending/receiving information—an interesting direction for future work.

The work on  $IMP_E$  [25] studies IFC non-interference for passive and active attackers on the host client. [26] present a calculus for reasoning about IFC for applications distributed across several enclaves.  $J_E$  [43] studies how compromised host clients can abuse gateway (declassification) primitives. Their security property and enforcement is based on the notion of robust declassification [42, 64]. Intuitively, this policy ensures that low-integrity data cannot influence the declassification of secret data. HasTEE enforces a simpler IFC policy for passive attackers—along the lines of [25]—and defer automatic analyses of the use of gateway for future work. Another interesting line of work is Moat [55], which formally verifies enclave programs running on Intel SGX such that data confidentiality is respected. It uses IFC to enforce the policies and automated theorem proving to verify the policy enforcement mechanism.

## 9 Conclusion & Future Work

This paper presents HasTEE, a domain-specific language to write TEE programs while ensuring confidentiality of data by construction. Unlike previous work, HasTEE provides its partitioning of source code and IFC as a library! For HasTEE to work, we ported GHC’s runtime to run within SGX enclaves by using the libraryOS Gramine. We demonstrate through three diverse case studies how HasTEE’s IFC mechanism can help prevent accidental data leakage while producing concise code. We hope HasTEE opens future research avenues at the intersection of TEEs and functional languages.

There are several directions for future work. The IFC scheme we consider operates on two security levels - sensitive (`Enclave`) and public (`Client`) data. A natural extension is to enable multiple security levels [56, 41] to represent the concerns of different principals contributing data to enclaves. TEEs also provide a verifiable launch of the execution environment for the sensitive code and data, enabling a remote entity to ensure that it was set up correctly. *Remote attestation* [32] allows an SGX enclave to prove its identity to a challenger using the private key embedded in the enclave. HasTEE does not capture attestation at the programming language level since it a property of the system components layout. Nevertheless, remote attestation can facilitate secure communication between multiple enclaves, e.g., a distributed-enclave setting; so it would be interesting to incorporate language-level support for remote attestation. Finally, GHC runtime is extensively optimized for performance. Obtaining a more compact and portable runtime, e.g., by using a restricted set of `libc` operations, could result in a considerably smaller TCB. A more portable runtime would facilitate HasTEE experiments on other TEE infrastructures such as ARM TrustZone and RISC-V PMP [47].

## 10 Acknowledgements

This work was funded by the Swedish Foundation for Strategic Research (SSF) under the project Octopi (Ref. RIT17-0023) and VR. Special thanks to Mary Sheeran, Marco Vassena, Bo Joel Svensson, and Claudio Agustin Mista for their initial reviews, and Facundo Dominguez and Michael Sperber for guiding the published draft.

## References

- [1] Mohammad Al-Rubaie and J. Morris Chang. 2019. Privacy-preserving machine learning: threats and solutions. *IEEE Secur. Priv.*, 17, 2, 49–58. <https://doi.org/10.1109/MSEC.2018.2888775>.
- [2] AMD. 2018. AMD. <https://developer.amd.com/sev/>. (accessed: 16.02.2023).

- [3] Apple. 2021. Apple Platform Security. <https://support.apple.com/guide/security/face-id-and-touch-id-security-sec067eb0c9e/web>. (accessed: 16.02.2023).
- [4] ARM. 2004. ARM TrustZone. <https://www.arm.com/technologies/trustzone-for-cortex-a>. (accessed: 16.02.2023).
- [5] Sergei Arnaudov et al. 2016. SCONe: secure linux containers with intel SGX. In *12th USENIX Symposium on Operating Systems Design and Implementation, OSDI 2016, Savannah, GA, USA, November 2-4, 2016*. Kimberly Keeton and Timothy Roscoe, (Eds.) USENIX Association, 689–703. <https://www.usenix.org/conference/osdi16/technical-sessions/presentation/arnaudov>.
- [6] Aslan Askarov, Daniel Hedin, and Andrei Sabelfeld. 2008. Cryptographically-masked flows. *Theor. Comput. Sci.*, 402, 2-3, 82–101. <https://doi.org/10.1016/j.tcs.2008.04.028>.
- [7] Aslan Askarov, Sebastian Hunt, Andrei Sabelfeld, and David Sands. 2008. Termination-insensitive noninterference leaks more than just a bit. In *Computer Security - ESORICS 2008, 13th European Symposium on Research in Computer Security, Málaga, Spain, October 6-8, 2008. Proceedings* (Lecture Notes in Computer Science). Sushil Jajodia and Javier López, (Eds.) Vol. 5283. Springer, 333–348. ISBN: 978-3-540-88312-8. [https://doi.org/10.1007/978-3-540-88313-5\\_22](https://doi.org/10.1007/978-3-540-88313-5_22).
- [8] Lennart Augustsson and Bart Massey. 2013. Text.Printf - printf in Haskell. <https://hackage.haskell.org/package/base-4.17.0.0/docs/Text-Printf.html#:~:PrintfType>. (accessed: 16.02.2023).
- [9] Amazon AWS. 2022. AWS Clean Room. <https://aws.amazon.com/clean-rooms/>. (accessed: 16.02.2023).
- [10] Zijian Bao, Qinghao Wang, Wenbo Shi, Lei Wang, Hong Lei, and Bangdao Chen. 2020. When blockchain meets SGX: an overview, challenges, and open issues. *IEEE Access*, 8, 170404–170420. <https://doi.org/10.1109/ACCESS.2020.3024254>.
- [11] Andrew Baumann, Marcus Peinado, and Galen C. Hunt. 2015. Shielding applications from an untrusted cloud with haven. *ACM Trans. Comput. Syst.*, 33, 3, 8:1–8:26. <https://doi.org/10.1145/2799647>.
- [12] Pablo Buiras, Dimitrios Vytiniotis, and Alejandro Russo. 2015. HLIO: mixing static and dynamic typing for information-flow control in Haskell. In *Proceedings of the 20th ACM SIGPLAN International Conference on Functional Programming, ICFP 2015, Vancouver, BC, Canada, September 1-3, 2015*. Kathleen Fisher and John H. Reppy, (Eds.) ACM, 289–301. <https://doi.org/10.1145/2784731.2784758>.
- [13] Stephen Checkoway and Hovav Shacham. 2013. Iago attacks: why the system call API is a bad untrusted RPC interface. In *Architectural Support for Programming Languages and Operating Systems, ASPLOS 2013, Houston, TX, USA, March 16-20, 2013*. Vivek Sarkar and Rastislav Bodik, (Eds.) ACM, 253–264. <https://doi.org/10.1145/2451116.2451145>.
- [14] Decentriq. 2022. Decentriq. <https://blog-decentriq-com.cdn.ampproject.org/c/s/blog.decentriq.com/swiss-cheese-to-cheddar-securing-amd-sev-snp-early-boot-2>. (accessed: 16.02.2023).
- [15] Dorothy E. Denning. 1976. A lattice model of secure information flow. *Commun. ACM*, 19, 5, 236–243. <https://doi.org/10.1145/360051.360056>.
- [16] Cynthia Dwork. 2006. Differential privacy. In *Automata, Languages and Programming, 33rd International Colloquium, ICALP 2006, Venice, Italy, July 10-14, 2006, Proceedings, Part II* (Lecture Notes in Computer Science). Michele Bugliesi, Bart Preneel, Vladimiro Sassone, and Ingo Wegener, (Eds.) Vol. 4052. Springer, 1–12. [https://doi.org/10.1007/11787006\\_1](https://doi.org/10.1007/11787006_1).
- [17] Cynthia Dwork and Aaron Roth. 2014. The algorithmic foundations of differential privacy. *Found. Trends Theor. Comput. Sci.*, 9, 3-4, 211–407. <https://doi.org/10.1561/04000000042>.
- [18] Anton Ekblad and Koen Claessen. 2014. A seamless, client-centric programming model for type safe web applications. In *Proceedings of the 2014 ACM SIGPLAN symposium on Haskell, Gothenburg, Sweden, September 4-5, 2014*. Wouter Swierstra, (Ed.) ACM, 79–89. <https://doi.org/10.1145/2633357.2633367>.
- [19] Richard Felker. 2005. musl C Library. <https://musl.libc.org/>. (accessed: 16.02.2023).
- [20] Craig Gentry. 2009. Fully homomorphic encryption using ideal lattices. In *Proceedings of the 41st Annual ACM Symposium on Theory of Computing, STOC 2009, Bethesda, MD, USA, May 31 - June 2, 2009*. Michael Mitzenmacher, (Ed.) ACM, 169–178. <https://doi.org/10.1145/1536414.1536440>.
- [21] Adrien Ghosn, James R. Larus, and Edouard Bugnion. 2019. Secured routines: language-based construction of trusted execution environments. In *2019 USENIX Annual Technical Conference, USENIX ATC 2019, Renton, WA, USA, July 10-12, 2019*. Dahlia Malkhi and Dan Tsafir, (Eds.) USENIX Association, 571–586. <https://www.usenix.org/conference/atc19/presentation/ghosn>.
- [22] GNU. 1999. GNU Privacy Guard. <https://gnupg.org/>. (accessed: 16.02.2023).
- [23] GNUDevs. 1991. glibc - The GNU C Library. <https://www.gnu.org/software/libc/>. (accessed: 16.02.2023).
- [24] Joseph A. Goguen and José Meseguer. 1982. Security policies and security models. In *1982 IEEE Symposium on Security and Privacy, Oakland, CA, USA, April 26-28, 1982*. IEEE Computer Society, 11–20. <https://doi.org/10.1109/SP.1982.10014>.
- [25] Anitha Gollamudi and Stephen Chong. 2016. Automatic enforcement of expressive security policies using enclaves. In *Proceedings of the 2016 ACM SIGPLAN International Conference on Object-Oriented Programming, Systems, Languages, and Applications, OOPSLA 2016, part of SPLASH 2016, Amsterdam, The Netherlands, October 30 - November 4, 2016*. Eelco Visser and Yannis Smeragdakis, (Eds.) ACM, 494–513. <https://doi.org/10.1145/2983990.2984002>.
- [26] Anitha Gollamudi, Stephen Chong, and Owen Arden. 2019. Information flow control for distributed trusted execution environments. In *32nd IEEE Computer Security Foundations Symposium, CSF 2019, Hoboken, NJ, USA, June 25-28, 2019*. IEEE, 304–318. ISBN: 978-1-7281-1407-1. <https://doi.org/10.1109/CSF.2019.00028>.
- [27] David Goltzsche, Colin Wulf, Divya Muthukumar, Konrad Rieck, Peter R. Pietzuch, and Rüdiger Kapitza. 2017. Trustjs: trusted client-side execution of javascript. In *Proceedings of the 10th European Workshop on Systems Security, EUROSEC 2017, Belgrade, Serbia, April 23, 2017*. Cristiano Giuffrida and Angelos Stavrou, (Eds.) ACM, 7:1–7:6. <https://doi.org/10.1145/3065913.3065917>.
- [28] Daniel Hedin and Andrei Sabelfeld. 2012. A perspective on information-flow control. In *Software Safety and Security - Tools for Analysis and Verification*. NATO Science for Peace and Security Series - D: Information and Communication Security. Vol. 33. Tobias Nipkow, Orna Grumberg, and Benedikt Hauptmann, (Eds.) IOS Press, 319–347. <https://doi.org/10.3233/978-1-61499-028-4-319>.
- [29] Intel. 2015. Intel Software Guard Extension. <https://www.intel.com/content/www/us/en/developer/tools/software-guard-extensions/overview.html>. (accessed: 16.02.2023).
- [30] Intel. 2018. tlibc - an alternative to glibc. <https://github.com/intel/linux-sgx/tree/master/common/inc/tlibc>. (accessed: 16.02.2023).
- [31] SL Peyton Jones, Cordy Hall, Kevin Hammond, Will Partain, and Philip Wadler. 1993. The Glasgow Haskell Compiler: A Technical Overview. In *Proc. UK Joint Framework for Information Technology (JFIT) Technical Conference*. Vol. 93.
- [32] Thomas Knauth, Michael Steiner, Somnath Chakrabarti, Li Lei, Cedric Xing, and Mona Vij. 2018. Integrating remote attestation with transport layer security. *CoRR*, abs/1801.05863. arXiv: 1801.05863. <https://doi.org/10.48550/arXiv.1801.05863>.
- [33] Michael Larabel. 2020. Linux Stats. <https://www.phoronix.com/news/Linux-Git-Stats-EOY2019>. (accessed: 16.02.2023).
- [34] Christian M. Lesjak, Daniel M. Hein, and Johannes Winter. 2015. Hardware-security technologies for industrial iot: trustzone and

- security controller. In *IECON 2015 - 41st Annual Conference of the IEEE Industrial Electronics Society, Yokohama, Japan, November 9-12, 2015*. IEEE, 2589–2595. <https://doi.org/10.1109/IECON.2015.7392493>.
- [35] Joshua Lind et al. 2017. Glamdring: automatic application partitioning for intel SGX. In *2017 USENIX Annual Technical Conference, USENIX ATC 2017, Santa Clara, CA, USA, July 12-14, 2017*. Dilma Da Silva and Bryan Ford, (Eds.) USENIX Association, 285–298. <https://www.usenix.org/conference/atc17/technical-sessions/presentation/lind>.
- [36] Simon Marlow, Simon L. Peyton Jones, and Satnam Singh. 2009. Runtime support for multicore haskell. In *Proceeding of the 14th ACM SIGPLAN international conference on Functional programming, ICFP 2009, Edinburgh, Scotland, UK, August 31 - September 2, 2009*. Graham Hutton and Andrew P. Tolmach, (Eds.) ACM, 65–78. <https://doi.org/10.1145/1596550.1596563>.
- [37] James Ménétrey, Marcelo Pasin, Pascal Felber, and Valerio Schiavoni. 2021. Twine: an embedded trusted runtime for weassembly. In *37th IEEE International Conference on Data Engineering, ICDE 2021, Chania, Greece, April 19-22, 2021*. IEEE, 205–216. <https://doi.org/10.1109/ICDE51399.2021.00025>.
- [38] Microsoft. 1994. glibc - The GNU C Library. `C %20runtime %20(CRT)%20and%20C++%20standard%20library%20(STL)`. (accessed: 16.02.2023).
- [39] Dominic P. Mulligan, Gustavo Petri, Nick Spinale, Gareth Stockwell, and Hugo J. M. Vincent. 2021. Confidential computing - a brave new world. In *2021 International Symposium on Secure and Private Execution Environment Design (SEED), Washington, DC, USA, September 20-21, 2021*. IEEE, 132–138. <https://doi.org/10.1109/SEED51797.2021.00025>.
- [40] Antonio Muñoz, Ruben Rios, Rodrigo Román, and Javier López. 2023. A survey on the (in)security of trusted execution environments. *Comput. Secur.*, 129, 103180. <https://doi.org/10.1016/j.cose.2023.103180>.
- [41] Andrew C. Myers and Barbara Liskov. 2000. Protecting privacy using the decentralized label model. *ACM Trans. Softw. Eng. Methodol.*, 9, 4, 410–442. <https://doi.org/10.1145/363516.363526>.
- [42] Andrew C. Myers, Andrei Sabelfeld, and Steve Zdancewic. 2004. Enforcing robust declassification. In *17th IEEE Computer Security Foundations Workshop, (CSFW-17 2004), 28-30 June 2004, Pacific Grove, CA, USA*. IEEE Computer Society, 172–186. <https://doi.org/10.1109/CSFW.2004.9>.
- [43] Aditya Oak, Amir M. Ahmadian, Musard Balliu, and Guido Salvaneschi. 2021. Language support for secure software development with enclaves. In *34th IEEE Computer Security Foundations Symposium, CSF 2021, Dubrovnik, Croatia, June 21-25, 2021*. IEEE, 1–16. <https://doi.org/10.1109/CSF51468.2021.00037>.
- [44] Pascal Paillier. 1999. Public-key cryptosystems based on composite degree residuosity classes. In *Advances in Cryptology - EUROCRYPT '99, International Conference on the Theory and Application of Cryptographic Techniques, Prague, Czech Republic, May 2-6, 1999, Proceeding (Lecture Notes in Computer Science)*. Jacques Stern, (Ed.) Vol. 1592. Springer, 223–238. [https://doi.org/10.1007/3-540-48910-X\\_16](https://doi.org/10.1007/3-540-48910-X_16).
- [45] Christian Priebe, Divya Muthukumaran, Joshua Lind, Huanzhou Zhu, Shujie Cui, Vasily A. Sartakov, and Peter R. Pietzuch. 2019. SGX-LKL: securing the host OS interface for trusted execution. *CoRR*, abs/1908.11143. arXiv: 1908.11143. <https://doi.org/10.48550/arXiv.1908.11143>.
- [46] Inc. Red Hat. 2019. Enarx: Confidential Computing with WebAssembly. <https://enarx.dev/>. (accessed: 16.02.2023).
- [47] RISC-V. 2017. RISC-V: Physical Memory Protection. <https://riscv.org/blog/2022/04/xuantie-virtualzone-risc-v-based-security-extension-xuan-jian-alibaba/>. (accessed: 16.02.2023).
- [48] Andreas Rossberg. 2019. WebAssembly Core Specification. W3C, (Dec. 5, 2019). <https://www.w3.org/TR/wasm-core-1/>.
- [49] Alejandro Russo. 2015. Functional pearl: two can keep a secret, if one of them uses haskell. In *Proceedings of the 20th ACM SIGPLAN International Conference on Functional Programming, ICFP 2015, Vancouver, BC, Canada, September 1-3, 2015*. Kathleen Fisher and John H. Reppy, (Eds.) ACM, 280–288. <https://doi.org/10.1145/2784731.2784756>.
- [50] Alejandro Russo, Koen Claessen, and John Hughes. 2008. A library for light-weight information-flow security in haskell. In *Proceedings of the 1st ACM SIGPLAN Symposium on Haskell, Haskell 2008, Victoria, BC, Canada, 25 September 2008*. Andy Gill, (Ed.) ACM, 13–24. <https://doi.org/10.1145/1411286.1411289>.
- [51] Andrei Sabelfeld and David Sands. 2005. Dimensions and principles of declassification. In *18th IEEE Computer Security Foundations Workshop, (CSFW-18 2005), 20-22 June 2005, Aix-en-Provence, France*. IEEE Computer Society, 255–269. <https://doi.org/10.1109/CSFW.2005.15>.
- [52] Abhiroop Sarkar, Robert Krook, Alejandro Russo, and Koen Claessen. 2023. HasTEE: Programming Trusted Execution Environments with Haskell (Extended Version). *arXiv preprint arXiv:2307.13172*. <https://doi.org/10.48550/arXiv.2307.13172>.
- [53] Moritz Schneider, Ramya Jayaram Masti, Shweta Shinde, Srdjan Capkun, and Ronald Perez. 2022. Sok: hardware-supported trusted execution environments. *CoRR*, abs/2205.12742. arXiv: 2205.12742. <https://doi.org/10.48550/arXiv.2205.12742>.
- [54] Hovav Shacham. 2007. The geometry of innocent flesh on the bone: return-into-libc without function calls (on the x86). In *Proceedings of the 2007 ACM Conference on Computer and Communications Security, CCS 2007, Alexandria, Virginia, USA, October 28-31, 2007*. Peng Ning, Sabrina De Capitani di Vimercati, and Paul F. Syverson, (Eds.) ACM, 552–561. <https://doi.org/10.1145/1315245.1315313>.
- [55] Rohit Sinha, Sriram K. Rajamani, Sanjit A. Seshia, and Kapil Vaswani. 2015. Moat: verifying confidentiality of enclave programs. In *Proceedings of the 22nd ACM SIGSAC Conference on Computer and Communications Security, Denver, CO, USA, October 12-16, 2015*. Indrajit Ray, Ninghui Li, and Christopher Kruegel, (Eds.) ACM, 1169–1184. <https://doi.org/10.1145/2810103.2813608>.
- [56] Deian Stefan, Alejandro Russo, John C. Mitchell, and David Mazières. 2011. Flexible dynamic information flow control in haskell. In *Proceedings of the 4th ACM SIGPLAN Symposium on Haskell, Haskell 2011, Tokyo, Japan, 22 September 2011*, 95–106. <https://doi.org/10.1145/2034675.2034688>.
- [57] David Terei, Simon Marlow, Simon L. Peyton Jones, and David Mazières. 2012. Safe haskell. In *Proceedings of the 5th ACM SIGPLAN Symposium on Haskell*, 137–148.
- [58] Chia-che Tsai, Donald E. Porter, and Mona Vij. 2017. Graphene-sgx: A practical library OS for unmodified applications on SGX. In *2017 USENIX Annual Technical Conference, USENIX ATC 2017, Santa Clara, CA, USA, July 12-14, 2017*. Dilma Da Silva and Bryan Ford, (Eds.) USENIX Association, 645–658. <https://www.usenix.org/conference/atc17/technical-sessions/presentation/tsai>.
- [59] Chia-che Tsai, Jeongseok Son, Bhushan Jain, John McAvey, Raluca Ada Popa, and Donald E. Porter. 2020. Civet: an efficient java partitioning framework for hardware enclaves. In *29th USENIX Security Symposium, USENIX Security 2020, August 12-14, 2020*. Srdjan Capkun and Franziska Roesner, (Eds.) USENIX Association, 505–522. <https://www.usenix.org/conference/usenixsecurity20/presentation/tsai>.
- [60] Li-Ting Tsai and Abhiroop Sarkar. 2016. HsPaillier - Partial Homomorphic Encryption in Haskell. <https://hackage.haskell.org/package/ePaillier>. (accessed: 16.02.2023).
- [61] Tweag.io. 2022. Haskell WASM backend. <https://www.tweag.io/blog/2022-11-22-wasm-backend-merged-in-ghc/>. (accessed: 16.02.2023).
- [62] Stephan van Schaik et al. 2022. SoK: SGX.Fail: How Stuff Get eXposed. (2022). <https://sgx.fail>.
- [63] Huibo Wang et al. 2019. Towards memory safe enclave programming with rust-sgx. In *Proceedings of the 2019 ACM SIGSAC Conference on Computer and Communications Security, CCS 2019, London, UK*,

- November 11-15, 2019. Lorenzo Cavallaro, Johannes Kinder, XiaoFeng Wang, and Jonathan Katz, (Eds.) ACM, 2333–2350. <https://doi.org/10.1145/3319535.3354241>.
- [64] Lucas Waye, Pablo Buiras, Dan King, Stephen Chong, and Alejandro Russo. 2015. It’s my privilege: controlling downgrading in dc-labels. In *Security and Trust Management - 11th International Workshop, STM 2015, Vienna, Austria, September 21-22, 2015, Proceedings* (Lecture Notes in Computer Science). Sara Foresti, (Ed.) Vol. 9331. Springer, 203–219. ISBN: 978-3-319-24857-8. [https://doi.org/10.1007/978-3-319-24858-5\\_13](https://doi.org/10.1007/978-3-319-24858-5_13).
- [65] Pascal Weisenburger, Johannes Wirth, and Guido Salvaneschi. 2021. A survey of multitier programming. *ACM Comput. Surv.*, 53, 4, 81:1–81:35. <https://doi.org/10.1145/3397495>.
- [66] Dmitry P. Zegzhda, E. S. Usov, V. A. Nikol’skii, and Evgeny Pavlenko. 2017. Use of intel SGX to ensure the confidentiality of data of cloud users. *Autom. Control. Comput. Sci.*, 51, 8, 848–854. <https://doi.org/10.3103/S0146411617080284>.

Received 2023-06-01; accepted 2023-07-04