



An interferometric SETI observation of Kepler-111 b




Downloaded from: <https://research.chalmers.se>, 2026-04-06 04:31 UTC

Citation for the original published paper (version of record):

Wandia, K., Garrett, M., Radcliffe, J. et al (2023). An interferometric SETI observation of Kepler-111 b. *Monthly Notices of the Royal Astronomical Society*, 522(3): 3784-3794.
<http://dx.doi.org/10.1093/mnras/stad1151>

N.B. When citing this work, cite the original published paper.

An interferometric SETI observation of Kepler-111 b

Kelvin Wandia ¹★, Michael A. Garrett,^{1,2} Jack F. Radcliffe ^{1,3}, Simon T. Garrington,¹ James Fawcett,¹ Vishal Gajjar,⁴ David H. E. MacMahon,⁴ Eskil Varenius,⁵ Robert M. Campbell,⁶ Zsolt Paragi ⁶ and Andrew P. V. Siemion^{1,4,7,8}

¹Jodrell Bank Centre for Astrophysics (JBCA), Department of Physics & Astronomy, Alan Turing Building, The University of Manchester, Manchester, M13 9PL, UK

²Leiden Observatory, Leiden University, PO Box 9513, NL-2300 RA Leiden, The Netherlands

³Department of Physics, University of Pretoria, Lynnwood Road, Hatfield, Pretoria, 0083, South Africa

⁴Breakthrough Listen, University of California, Berkeley, CA 94720, USA

⁵Department of Space, Earth and Environment, Chalmers University of Technology, Onsala Space Observatory, SE-439 92 Onsala, Sweden

⁶Joint Institute for VLBI in Europe, Oude Hoogeveensedijk 4, NL-7991 PD, Dwingeloo, The Netherlands

⁷SETI Institute, Mountain View, CA 94043, USA

⁸Institute of Space Sciences and Astronomy, University of Malta, Msida, MSD2080, Malta

Accepted 2023 April 13. Received 2023 April 12; in original form 2023 February 21

ABSTRACT

The application of very long baseline interferometry (VLBI) to the search for extraterrestrial intelligence (SETI) has been limited to date, despite the technique offering many advantages over traditional single-dish SETI observations. In order to further develop interferometry for SETI, we used the European VLBI network (EVN) at 21 cm to observe potential secondary phase calibrators in the Kepler field. Unfortunately, no secondary calibrators were detected. However, a VLBA primary calibrator in the field, J1926+4441, offset only ~ 1.88 arcmin from a nearby exoplanet Kepler-111 b, was correlated with high temporal (0.25 s) and spectral (16384×488 Hz channels) resolution. During the analysis of the high-resolution data, we identified a spectral feature that was present in both the auto and cross-correlation data with a central frequency of 1420.424 ± 0.0002 MHz and a width of 0.25 MHz. We demonstrate that the feature in the cross-correlations is an artefact in the data, associated with a significant increase in each telescope's noise figure due to the presence of HI in the beam. This would typically go unnoticed in data correlated with standard spectral resolution. We flag (excluded from the subsequent analysis) these channels and phase rotate the data to the location of Kepler-111 b aided by the *Gaia* catalogue and search for signals with $\text{SNR} > 7$. At the time of our observations, we detect no transmitters with an equivalent isotropically radiated power $\gtrsim 4 \times 10^{15}$ W.

Key words: extraterrestrial intelligence – instrumentation: interferometers – proper motions – radio continuum: general – radio lines: general.

1 INTRODUCTION

The origins of the search for extraterrestrial intelligence (SETI) in the radio band can be traced back to Frank Drake (Drake 1961) who made the first targeted SETI searches using the 85-foot Tatel telescope at Greenbank, West Virginia. This groundbreaking work followed a seminal paper by Cocconi & Morrison (1959); they argued that the frequency range centred on the neutral hydrogen (HI) spectral line was an optimal region of the electromagnetic spectrum to search for signals intended for interstellar communications. Even though the original observational setup by Drake (1961) is rudimentary compared to modern standards, the basic tenets of SETI have remained largely unchanged, with large single dishes searching for narrow-band (coherent) radio emission from nearby stars (e.g. Price et al. 2020). Interferometric SETI using relatively short baselines

(< 11 km) has been conducted before, especially using the Very Large Array (VLA) and the Murchison Widefield Array (MWA). For example, Gray & Mooley (2017) searched for signals from M31 and M33 with the VLA and (Tremblay & Tingay 2020) did a survey of the Vela region using the MWA. Until recently, the application of long baseline interferometry to SETI has not been well explored, partly because of the limited capabilities of correlators to generate high spectral resolution data over a wide frequency range. The data rates generated are also large – these scale as $N(N - 1)$ for an array of N antennas compared to just a single dish. As a result, beamforming techniques have been widely used for SETI surveys using telescope arrays, in particular at the Allen Telescope Array (Welch et al. 2009) and more recently using MeerKAT in South Africa (Jonas & MeerKAT Team 2016) by Breakthrough Listen (Czech et al. 2021). The advent of software correlators which are capable of correlating data at very high spectral and temporal resolution such as the EVN software correlator at JIVE, the Super FX Correlator (SFXC; Keimpema et al. 2015) and Distributed FX (DiFX; Deller

* E-mail: kelvin.wandia@manchester.ac.uk

et al. 2007) at the VLBA, now make long baseline (non-beam formed) SETI observations an interesting proposition.

The first Very Long Baseline Interferometry (VLBI) SETI experiment was made by Rampadarath et al. (2012) using the Australian Long Baseline Array (LBA) observing Gliese 581 in the frequency range 1230–1544 MHz. They constrained the power of an isotropic emitter to an upper limit of 7 MW Hz^{-1} and also highlighted the advantages of VLBI SETI. The key advantage they identified was that a VLBI array is less susceptible to the effects of Radio Frequency Interference (RFI), a major source of false positives that can sometimes mimic narrow-band, Doppler drifting SETI signals e.g. Breakthrough Listen candidate 1 (Sheikh et al. 2021; Smith et al. 2021). The advantages of an interferometer are that local sources of RFI do not correlate on long baselines and other mutual sources of RFI (e.g. satellites) decorrelate rapidly if they are located outside the interferometer’s typically narrow field of view. In this respect, longer baselines suppress common RFI sources more than short baselines.

Garrett (2018) presented other advantages of an interferometric approach to SETI. They noted that the independent detection of candidate signals on multiple telescope baselines adds a level of robustness to detecting a signal that is simply not possible using a single dish. This redundancy could be extremely important in terms of the verification of detections associated with faint, transitory signals. In addition, since interferometer data can be transformed to the image domain, the 2D location of a bonafide SETI signal should be invariant with time (unless the signal is located nearby) – this is a fundamental constraint when potentially almost everything else associated with a SETI signal could be changing (e.g. frequency drift due to Doppler accelerations, temporal variability). Related to this is the ability of VLBI to pinpoint the location of an extra-terrestrial signal with (sub-)milliarcsecond precision, and to monitor any motion of the transmitter via multi-epoch observations. This may be crucial in understanding the characteristics of the platform on which the transmitter is fixed (e.g. the orbit determination of any host planet, proper motion of a freeflying platform). We also note that in addition to narrowband signals, a new category of broadband millisecond width transient signals also exists (e.g. Gajjar et al. 2022). The ability to localize these so-called Fast Radio Bursts has recently been demonstrated by VLBI (see Nimmo et al. 2022), and these techniques can also be applied to SETI candidate signals that are also transient in nature. Finally, the requirement from SETI for high time and frequency resolution is also well matched to wide-field VLBI observations that preserve sensitivity to SETI signals across the full telescope primary beam. This is important, as it maximises serendipity in making a possible SETI detection while beam-formed arrays use narrow pencil beams that only cover a fraction of the primary beam of the individual antennas (e.g. Gajjar et al. 2019; Czech et al. 2021).

To further advance the use of VLBI for SETI, we were successful in obtaining observations of the Kepler field (Batalha et al. 2006, 2010) using the European VLBI Network (EVN). The main goals were to identify secondary phase calibrators in the field and also analyse high spectral and time resolution data of the VLBA calibrator J1926+4441. J1926+4441 is a flat-spectrum radio source ($\alpha > -0.5$; Healey et al. 2007). This source lies only 1.88 arcmin from Kepler-111, a star which is orbited by a (possibly rocky) exoplanet, Kepler-111 b (Rowe et al. 2014). *e*-MERLIN observations were also made in order to further understand a narrow-band feature in the EVN auto and cross-correlation data. In Section 2 of this paper, we describe the EVN and *e*-MERLIN observations, and the data analysis. In Section 3 we present our results, including the analysis of the unexpected

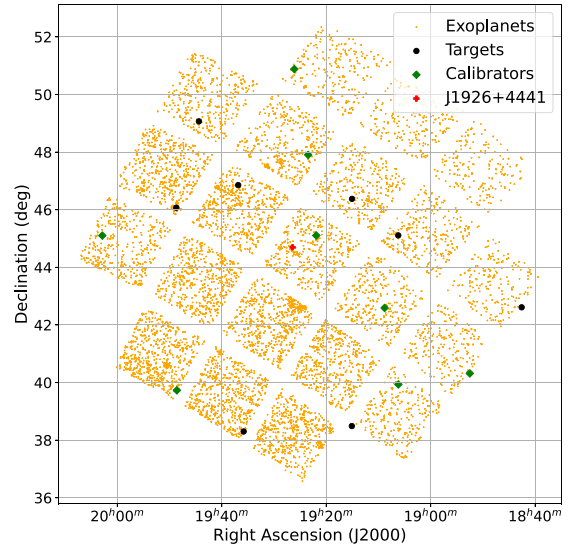


Figure 1. The location of VLBA primary calibrators (green dots) and the secondary targets (blue dots) overlaid on exoplanet detections in the Kepler field. J1926+4441 is shown in red.

spectral feature in the auto and cross-correlation data. In Section 4 we draw our main conclusions.

2 OBSERVATIONS AND DATA ANALYSIS

The original primary goal of the EVN short observations was to detect secondary VLBI phase calibrators in the Kepler field, in order to support follow-up VLBI SETI surveys of this area of sky. The motivation was based on the fact that this field contains many exoplanets of particular interest since they are well characterised in terms of their mass and radius (NASA Exoplanet Science Institute 2020). These and other exoplanet candidates in the field could be interesting targets for VLBI SETI in the future. Secondary calibrators that lie closer to the exoplanet permit better phase corrections to be applied to the VLBI data, substantially improving the coherence of the data compared to that referenced via a more distant (primary) calibrator. Another goal of our observations was to develop and extend the VLBI SETI technique (see Garrett 2018) by correlating a single scan on one of the primary calibrators (J1926+4441) with high spectral and temporal resolution. A known exoplanet, Kepler-111 b lies within the field of view centred on J1926+4441 and this permitted a search for narrow-band signals from this system.

2.1 Phase calibrator target selection

There are nine primary VLBA calibrators located within the Kepler field, including J1926+4441. Unfortunately, the VLA FIRST survey (Becker, White & Helfand 1994) does not cover the area of sky of the Kepler field and we were therefore forced to select our secondary calibrator targets from the lower resolution National Radio Astronomy Observatory Very Large Array Sky Survey (NVSS) catalogue (Condon et al. 1998). Our sample was selected on the basis of angular size ($\theta < 20$ arcsec) and flux density ($S > 40$ mJy). Unfortunately, we had no spectral index information about the sources. Eight sources were identified that matched our constraints (see Fig. 1) and Table 1.

Table 1. Name, coordinates, and flux densities of the secondary targets drawn from NVSS and the primary VLBA calibrators used to phase calibrate the data. These sources were observed in experiment RSG12.

Name	RA (J2000)	Dec. (J2000)	NVSS flux density (mJy)	VLBA calibrator (ICRF)
NVSS 191503+462235	19 15 03.77	+ 46 22 35.70	48.6 ± 1.5	J1921+4506
NVSS 190612+450634	19 06 12.47	+ 45 06 34.80	815.2 ± 28.7	J1908+4235
NVSS 193651+465115	19 36 51.07	+ 46 51 15.60	239.4 ± 8.5	J1923+4754
NVSS 194842+460415	19 48 42.56	+ 46 04 15.50	100.5 ± 3.0	J2002+4506
NVSS 194422+490401	19 44 22.69	+ 49 04 01.30	40.7 ± 1.3	J1926+5052
NVSS 191505+382926	19 15 05.72	+ 38 29 26.80	83.4 ± 2.5	J1906+3956
NVSS 193548+381809	19 35 48.52	+ 38 18 09.10	116.5 ± 3.5	J1948+3943
NVSS 184234+423645	18 42 34.99	+ 42 36 45.60	157.0 ± 4.7	J1852+4019
NVSS 192626+444149	19 26 26.57	+ 44 41 49.23	31.1 ± 1	N/A

2.2 Observations

2.2.1 EVN observations (RSG12)

Observations (experiment code RSG12) were made on 2019 November 6, 1000–1300 UT, using the EVN at L band, with the middle of the observing band centred on the H I line at 1420.4 MHz. A single 8 MHz spectral window was recorded in both right and left-hand circular polarization. The 8 MHz band was chosen as a compromise between sensitivity and spectral resolution. The latter was required in order to further develop the VLBI SETI technique (see Section 3.3).

We employed the technique of phase referencing with a cycle time of 2 + 7 min, cycling between the primary calibrator and secondary candidates. Two of these scans were made for each primary/secondary calibrator pair. Two 10-min scans were made on J1926+4441. A single scan of 5 min was made on the fringe-finder J1800 + 3848.

11 antennas, Jodrell Bank Lovell (Jb1), Westerbork (Wb), Effelsberg (Ef), Medicina (Mc), Noto (Nt), Onsala85 (O8), Torun (Tr), Svetloe (Sv), Zelenchukskayaa (Zc), Badary (Bd), and Sardinia (Sr) participated in the observation.

2.2.2 e-MERLIN follow-up observations

A follow-up observation of the VLBA calibrator J1926+4441 was requested in order to independently analyse a spectral feature first detected in the EVN observations (see Section 3.2 for more details). Observations of J1926+4441, together with a phase referencing calibrator J1923+4754, the standard flux calibrator 3C286 (1331+3030), a bandpass calibrator OQ208 (1407+2827), and a bright calibrator 3C84 (0319+4130) were carried out on 2022 January 11, 1100–2100 UT. The phase referencing cycle time was 10 + 2 min. The observations involved a subset of the e-MERLIN array: Jodrell Bank Mark2 (Mk2), Cambridge (Cm), Pickmere (Pi) Defford (De), and Darnhall (Da). The telescope at Knockin (Kn) failed during our observations.

2.2.3 EVN follow-up observations (RSW02)

A follow-up observation with the EVN (experiment code RSW02) was made on 2022 March 3, 1610–1700 UT. As in the case of the e-MERLIN observations, these were requested in order to further probe the nature of an expected spectral feature detected in the original EVN observations (see again Section 3.2 for more details). A frequency setup similar to that of the earlier experiment was used but this time with two overlapping 8 MHz bands, the first band at a central reference frequency of 1420.4 MHz and the second offset by 1 MHz with a central reference frequency of 1421.4 MHz. Two bands were chosen to ensure that the feature was not an artefact introduced by

Table 2. Name and coordinates for sources observed in experiment RSW02.

Name	RA (J2000)	Dec. (J2000)
3C345	16 42 58.80997043	+ 39 48 36.9939552
J1923+4754	19 23 27.22979949	+ 47 54 16.8181121
J1926+4441	19 26 26.56921500	+ 44 41 49.2311000
J1936+2357	19 36 00.92484600	+ 23 57 31.9758900

correlating a single band. The tuning offset of 1 MHz also ensured that the feature in the second band would also be relatively centred.

Four sources (see Table 2) were observed: 3C345 ($b \sim 40.95^\circ$), a fringe finder located at high Galactic latitude, J1936 + 2357 ($b \sim 1.60^\circ$), a source lying close to the Galactic plane and J1926+4441 observed previously in RSG12, located within the field. A single scan of 3C345 was made at the beginning of the experiment for 5 min with J1926+4441 phase referenced with respect to VLBA calibrator J1923+4752 – a cycle time of 10 + 2 min was employed. Two 10+2 minutes scans were made for J1926+4441/J1923+4752. Finally, a single 10 min scan of J1936 + 2357 was made.

13 EVN antennas were originally scheduled for experiment RSW02 but due to various failures only seven antennas produced useful data: Jb1, Wb, Nt, O8, T6, Ur, Tr, and Ir.

2.2.4 EVN data correlation

The data were correlated using the EVN software correlator at JIVE (i.e. SFXC; Keimpema et al. 2015). The data associated with experiment RSG12 were correlated in two passes. The first and main pass, was applied to all the sources and used 32 frequency channels and 2 s of integration time, giving a channel width of 250 kHz. A second high-resolution correlator pass was made for the scans of J1926+4441. This generated 16 384 frequency channels each with a width of 488 Hz. An integration time of 0.25 s was employed. The output was pipelined into FITS-IDI in two passes with the high-resolution correlation pass of J1926+4441 yielding about ~ 108 GB of data.

Besides the advantage of correlating the data with fine spectral resolution as required by narrow-band SETI searches, this approach also preserves a very large field of view. The limit on the field of view is set by the integration time of 0.25 s – time smearing limits the radial field of view to ~ 4 arcmin for a loss of 10 per cent at the edge of the field. We estimate the theoretical 1σ noise level in a naturally weighted imaged to be 0.13 mJy for the targets observed for 14 min, 0.23 mJy for the VLBA phase referencing calibrators observed for 4 min and 0.11 mJy for J1926+4441 which was observed for 20 min.

All the data from EVN experiment RSW02 were correlated with 16 384 frequency channels matching the channel size of the previous

observation. However, the integration time was increased from 0.25 to 2 s to keep the data rates manageable.

2.2.5 *e*-MERLIN Data correlation

The *e*-MERLIN data were also correlated in two passes; the first was a continuum pass made over 512 MHz, correlated with 4096 frequency channels each of width 0.125 MHz. The second pass involved the correlation of three ‘zoom bands’ each 0.25 MHz wide, resulting in a combined bandwidth of 0.75 MHz and centred on 1420.4 MHz. Each of the zoom bands was correlated in all four Stokes parameters using 512 frequency channels and 4 s integration time, resulting in channel sizes similar to those of the high-resolution EVN data.

2.3 Data analysis

2.3.1 EVN experiment RSG12

The VLBI data analysis was performed in the Common Astronomy Software Applications (CASA; CASA Team et al. 2022; van Bemmél et al. 2022). Custom scripts from JIVE were used to attach the telescope system temperatures and gain curves to the data. The rudimentary Apriori flagging file generated by JIVE was also converted into a format that can be read in CASA. We created two measurement sets, a low spectral resolution data set associated with the eight primary and secondary calibrators and a high spectral resolution data set associated with J1926+441.

We inspected the system temperatures and were required to edit and correct some of the entries, in particular for the Zelenchukskaya and Westerbork antennas. The tables were then used to amplitude calibrate the data. We also flagged the outer and inner channels of the 8 MHz band due to edge effects. For the low-resolution data, we flagged ~ 3 channels at each edge of the band and for the high-resolution data, we flagged ~ 500 channels. A custom flagging file was created to flag known terrestrial RFI. The autocorrelations for the low-resolution data were flagged while those for the high-resolution data were first plotted (see Section 3.2) and then flagged for imaging purposes.

For the low-resolution data (including the J1926+4441 data from the first pass), J1926 + 5052 was used to derive the bandpass calibrations and the solutions (SNR >4) were applied to all sources. The primary phase calibrators were fringe-fitted using the CASA task `fringefit`, and the solutions (SNR > 7) were transferred to the secondary calibrators. Naturally, J1926+4441 was bright enough to fringe fit on itself.

Since the synthesized beam of NVSS is quite large ($\theta \sim 45$ arcsec) it was necessary to make maps that were big enough to encompass possible errors in the NVSS source position. According to Condon et al. (1998) the positional uncertainty errors σ_p are given by:

$$\sigma_p = \left(\frac{\sigma \theta}{2S_p} \right), \quad (1)$$

where θ is the synthesized beam, S_p is the peak intensity in the map and σ is the r.m.s noise. In the case of NVSS with a synthesised beam of 45 arcsec, assuming a detection cutoff of 5σ , the positional uncertainty would be expected to be ~ 4.5 arcsec whereas the VLBA calibrators obtained from the online Radio Fundamental Catalogue¹ (Petrov 2021) have positional uncertainty errors < 1 mas. We, therefore, used the CASA task `tclean` to make large dirty maps

of size 10240×10240 pixels (10×10 arcsec), locating the position of peak intensity, making a 256×256 pixel map and searching for emission with a SNR > 7 . No obvious detections were noted.

In the case of J1926+4441, we produced a clean map from the low-resolution data and then applied one round of phase-only self-calibration using an interval of 3 min, and then a further round of amplitude self-calibration at an interval of 5 min. All the calibration tables from this source were then copied to the high-resolution data set using the CASA task `applycal`. After the calibration tables are copied, small maps were made using the high-resolution data to ensure the calibration tables had been copied and correctly applied. The response of J1926+4441 was subtracted from the high-resolution data set using the CASA task `uvcontsub`. The data were then phase rotated on-the-fly using the `phasecenter` parameter during imaging in `tclean` to the location of Kepler-111 b, taking into account its position and proper motion as determined by *Gaia* (Gaia Collaboration et al. 2016, 2018).

2.3.2 *e*-MERLIN data

The *e*-MERLIN data were not fully analysed, as they were mainly used as a sanity check on the spectral feature observed in the original EVN data, as discussed in the next section. The *e*-MERLIN data had to be reprocessed to include the autocorrelations that were flagged by the automatic calibration pipeline employed by the observatory.

2.3.3 EVN experiment RSW02

The data associated with EVN experiment RSW02 were not calibrated or further processed because we were only interested in the raw auto and cross-correlation data.

3 RESULTS AND DISCUSSION

3.1 NVSS targets and J1926+4441

For EVN experiment RSG12, no detections with a signal-to-noise ratio (SNR) greater than five were obtained for the secondary calibrator targets. A similar result was noted from the independent and automatic JIVE pipeline analysis using AIPS. Previous snapshot surveys of this type, have usually fared better in terms of detection statistics but these have often preferentially selected flat spectrum objects or used higher resolution finding surveys (e.g. Garrington, Garrett & Polatidis 1999; Beasley et al. 2002; Mosoni & Frey 2004; Wrobel et al. 2004). We note that all these targets have now been detected by the Very Large Array Sky Survey (VLASS; Lacy et al. 2020) in the quicklook images (Gordon et al. 2020). Our source selection was made before VLASS data were publicly available and it turns out that our targets all have very steep spectral indices in the range ($S_\nu \propto \nu^\alpha$) $\alpha = -1.67$ to -2.25 . The true spectral indices are probably much less than this but resolution effects are at work here – in particular, the VLASS restoring beam (2.5 arcsec) is more than two orders of magnitude larger in beam area than the EVN restoring beam. It is therefore probably not very surprising that we do not detect any of these sources on VLBI scales.

Naturally weighted dirty and CLEANed images of J1926+4441 were generated from the low spectral resolution data – see Fig. 2. The images presented in Fig. 2(b) were generated from the high-resolution data, after applying the calibration tables from the low-spectral resolution data. This appears to have worked well, and

¹<http://astrogeo.org>

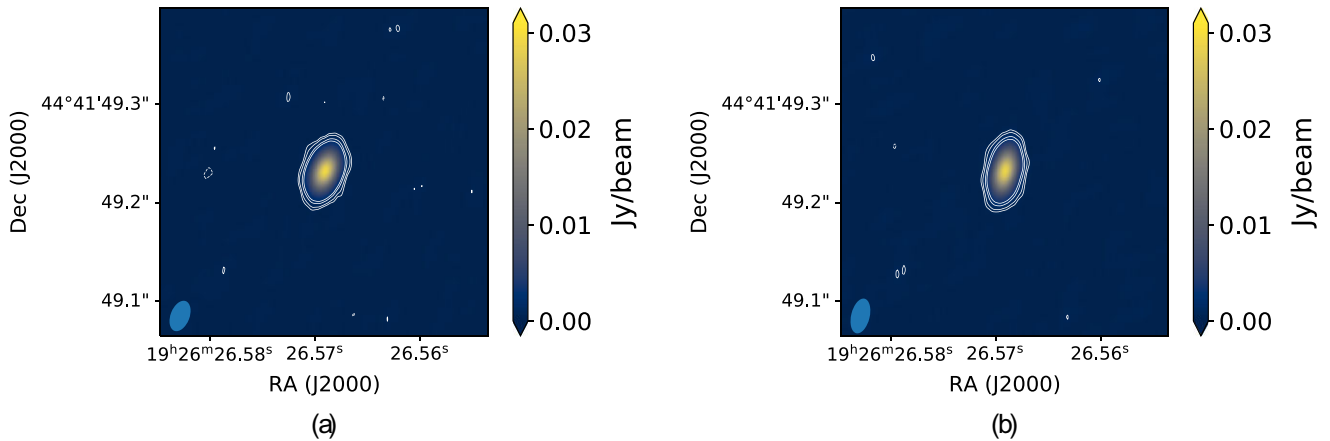


Figure 2. (a) The final CLEAN map has a peak brightness of ~ 29.3 mJy beam $^{-1}$ and an r.m.s. noise of ~ 0.14 mJy beam $^{-1}$, giving a signal-to-noise ratio of ~ 209 . (b) The final CLEAN map after applying the phase and amplitude corrections from the low-resolution data set. The map has peak brightness of ~ 28.9 mJy beam $^{-1}$ and the r.m.s. noise of ~ 0.2 mJy beam $^{-1}$ resulting in a SNR of ~ 145 . The maps are presented with contours drawn at intervals of $(-3, 3, 5, 10, 15)\sigma$. The colour bar is shown to the right of the respective images in units of Jy beam $^{-1}$. The light blue circle in both maps represents the restoring beam.

greatly reduces the computational burden of calibrating the large, high-resolution data set.

3.2 Feature in the data

In the course of visually inspecting the high-resolution data, we noticed a feature in the autocorrelations shown in Fig. 3(a) that peaks at $\sim 1420.424 \pm 0.002$ MHz and is about ~ 0.25 MHz in width from ~ 1420.3 to ~ 1420.55 MHz. It is not uncommon to see such features in VLBI autocorrelations due to the presence of foreground, Galactic neutral hydrogen (H I) and the field with Galactic coordinates $l = 76.35^\circ$, $b = +13.5^\circ$ lies close to the Galactic plane (see Fig. 1).

What was more surprising is that in the high-resolution data we also see the same feature appearing in the cross-correlations, as shown in Figs 3(b) and (c). This feature is very comparable in its characteristics to that seen in the autocorrelations – indeed it is located in the same spectral channel. The feature is ~ 0.25 MHz in width, spanning the same frequency channels (1420.3 to ~ 1420.55 MHz) as in the autocorrelations.

We also see these features in the autocorrelations of the low-resolution data (see Fig. 4a) but they are much more difficult to recognise, and are no longer visible in the cross-correlation data at all (see Fig. 4b). The spectral feature in the low resolution autocorrelation data would almost certainly have gone unnoticed if we had not been prompted to look for it via the earlier discovery of this feature in the high-resolution data.

To test whether the spectral feature was associated with Galactic H I, we performed local standard of rest (LSR) corrections to the EVN autocorrelation data using the CASA task CVEL and compared with the Leiden/Argentine/Bonn (LAB) Survey of Galactic H I (Kalberla et al. 2005) and the Effelsberg-Bonn H I Survey (EBHIS) (Kerp et al. 2011) using H I profiles obtained from AIFA Hi Surveys Data Server². For the EVN data, the local standard of rest kinematic (LSRK) velocity of the feature was found to peak at 2.4 ± 0.1 km s $^{-1}$. After querying the EBHIS (Kerp et al. 2011) and the LAB (Kalberla et al. 2005) using the default beamwidth size of 0.2° , the H I profile shows that the velocity they measure peaks at 2.06 and 2.68 km s $^{-1}$, respectively, strongly suggesting that the feature we see in the EVN autocor-

relations is due, as we suspected, to Galactic H I in emission. Fig. 5 compares the profile we observe with the profile observed by LAB and EBHIS.

The *e*-MERLIN autocorrelations of J1926+4441 also show the same feature peaking at a frequency of about $\sim 1420.462 \pm 0.002$ MHz in the uncorrected geocentric frame (see Fig. 6). Application of LSR corrections and subsequent comparison with velocity profiles from Kalberla et al. 2005 and Kerp et al. 2011, show a similar profile and a peak velocity at a velocity of 2.7 ± 0.1 km s $^{-1}$ (see Fig. 7) conclusively proving that the feature in the autocorrelations is Galactic H I. However, the feature is not detected in the *e*-MERLIN cross-correlation data.

3.2.1 Nature of the feature

The comparison of the velocities measured here and in EBHIS (Kerp et al. 2011) and LAB (Kalberla et al. 2005), clearly demonstrate that the feature in both the EVN and *e*-MERLIN autocorrelations is Galactic H I in emission. Since H I in emission has a brightness temperature $< 10^4$ K (Roy et al. 2013), it is not plausible that it could be detected in the EVN data—for example, even the shortest and most sensitive EVN baseline has a brightness sensitivity $\sim 10^5$ K.

As a further test, we attempted to make EVN images of this feature by making maps that only included those channels with significant emission (channels 8100–8400). No detections of the feature were made in the image plane, also employing very large 10k by 10k images. We also note that the feature persists after the continuum subtraction of J1926+4441 (see Section 3.3.2).

If the feature in the cross-correlations is not a detection of H I in emission, then what can it be? We believe that this is an artefact of the EVN data that is related to the large increase in telescope receiver temperature due to the presence of bright 21 cm emission in the primary beam. Indeed a similar phenomenon was observed by Dickey (1979) in some early VLA H I observations. The data from EBHIS and LAB surveys (Kalberla et al. 2005; Kerp et al. 2011) imply that the peak H I emission in this direction on the sky is ~ 36.6 K. This is comparable to the noise temperatures of the EVN receivers on cold sky.

In order to test this hypothesis, we used the EVN to reobserve J1926+4441 as before but also added in observations of one source

²https://www.astro.uni-bonn.de/hisurvey/AllSky_profiles/index.php

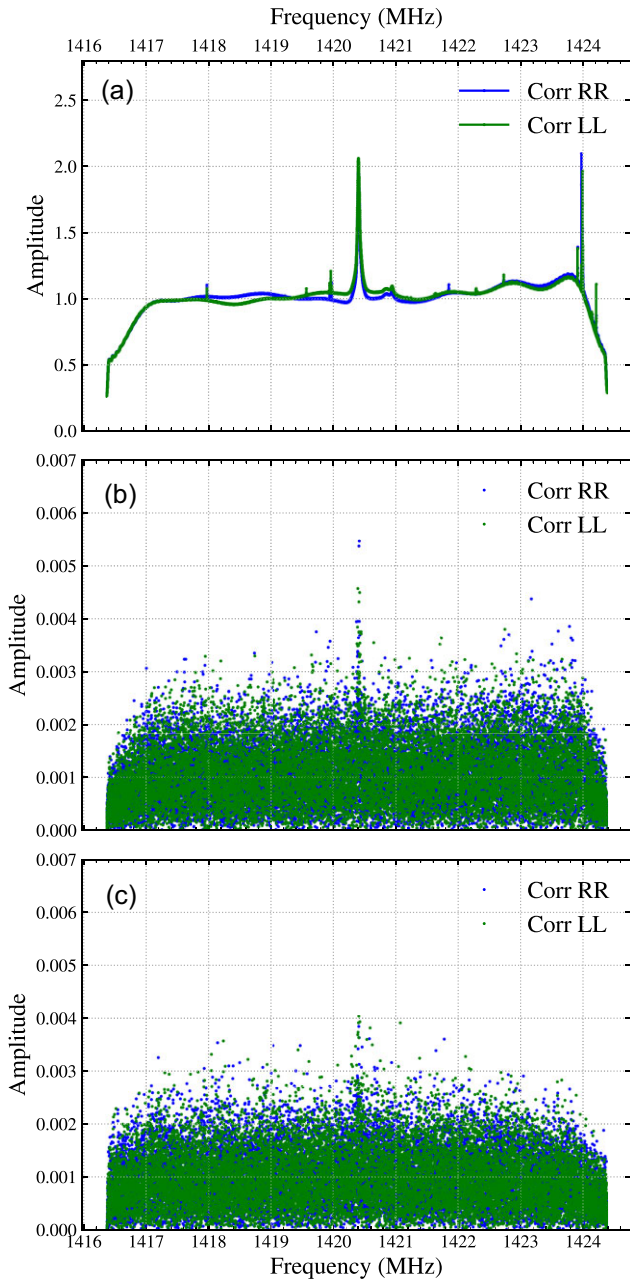


Figure 3. (a) The autocorrelations of antenna Effelsberg showing the right and left circular polarization. (b) The cross-correlations formed by the shortest baseline (~ 267 km) to the most sensitive antenna, Effelsberg paired with the antenna Westerbork. The right and left circular polarization hands are shown in the colours blue and green, respectively. (c) The cross-correlations formed by the longest baseline (~ 5930 km) to the most sensitive antenna, Effelsberg paired with the antenna Badary. The right and left circular polarization hands are shown in the colours blue and green, respectively. All the amplitudes are in arbitrary correlator units and the data are plotted over the entire 8 MHz band ranging from 1416.4 to 1424.4 MHz.

at high Galactic latitude (3C345) and another at very low Galactic latitude (1936 + 2357). This follow up experiment (RSW02) used the same high-resolution set up as that employed in the original EVN experiment RSW02. In the case of 3C345, plots of the autocorrelations and cross-correlations (see Figs 8a and b) show no evidence for any features but for J1936+2357 features are very prominent in both the autocorrelations and cross-correlations – see

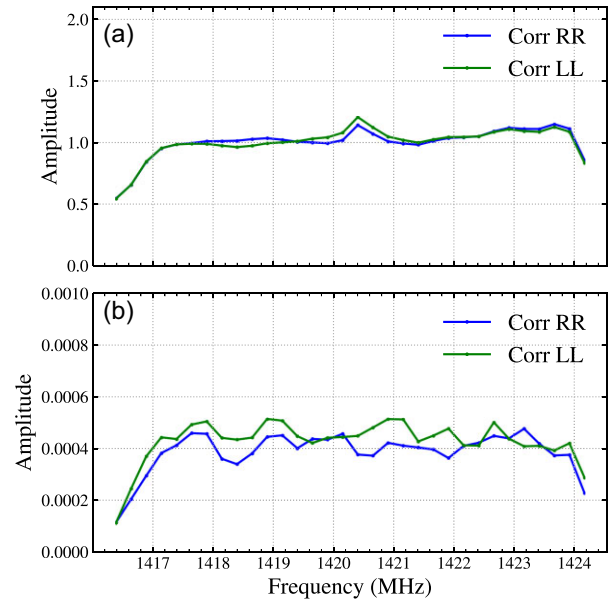


Figure 4. (a) The autocorrelations of antenna Effelsberg from the low-resolution data showing the right and left circularly polarized hands. The spectral feature can still be identified in the plot. (b) The cross-correlations formed by antennas Effelsberg and Westerbork show the two circularly polarized hands. The spectral feature is no longer visible in this plot. All the amplitudes are in arbitrary correlator units and the data are plotted over the entire 8 MHz band ranging from 1416.4 to 1424.4 MHz.

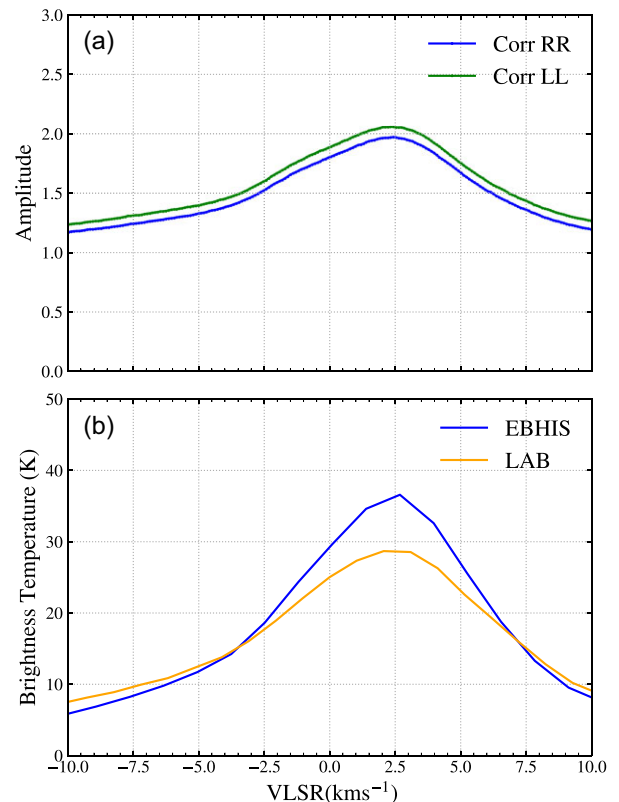


Figure 5. (a) The LSRK velocity for the observed feature in the autocorrelations of antenna Effelsberg showing the right and the left circularly polarized hands (b) The velocity profile of J1926+4441 obtained from the LAB and EBHIS Galactic hydrogen surveys. The data are plotted in the range of -10 – 10 km s $^{-1}$.

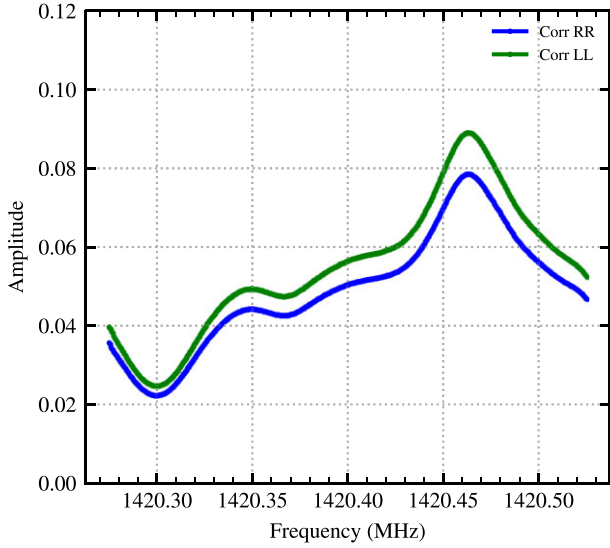


Figure 6. The autocorrelations of antenna Mark 2 showing the right and left circular polarization hands in a 0.25 MHz spectral window centred on 1420.4 MHz. The amplitude is in arbitrary correlator units.

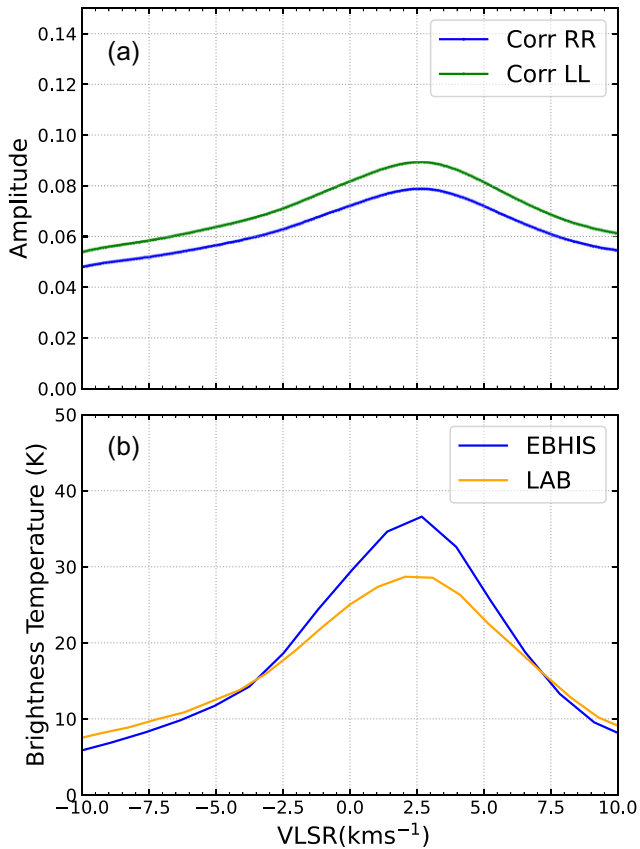


Figure 7. (a) The LSRK velocity for the observed feature in the autocorrelations of antenna Mark 2 showing the right and the left circularly polarized hands (b) The velocity profile of J1926+4441 obtained from the LAB and EHBIS Galactic hydrogen surveys. The data are plotted in the range of -10 – 10 km s^{-1} .

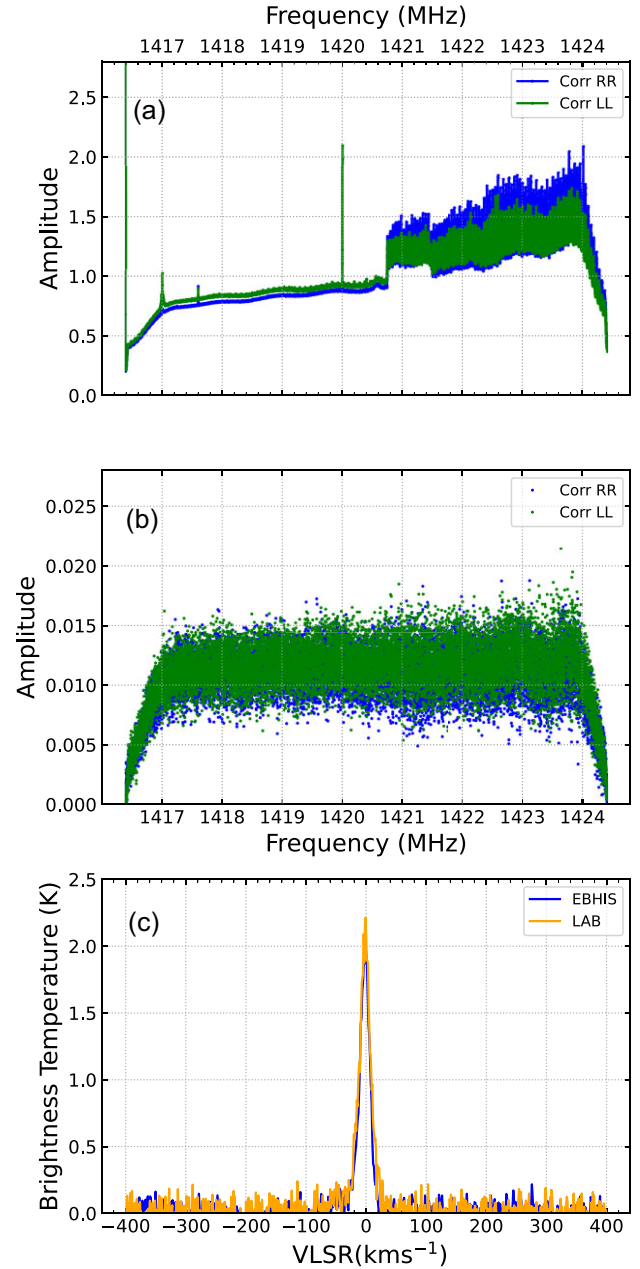


Figure 8. (a) The autocorrelations of antenna Westerbork showing the right and left circular polarization formed from observations of 3C345. (b) The cross-correlations of the baseline formed by antennas Westerbork and Jodrell Bank (~ 597 km) formed from observations of 3C345. The right and left circular polarization hands are shown in the colours blue and green, respectively. (c) The velocity profile of 3C345 obtained from the LAB and EHBIS Galactic hydrogen surveys. The data are plotted in the range of -400 – 400 km s^{-1} .

Figs 9(a) and (b). The original feature seen in J1926+4441 is redetected in these observations too.

From these results, we conclude that the unusual feature in the EVN cross-correlation data is indeed associated with the presence of HI within the telescope beams. The HI brightness temperature in the region of 3C345 peaks at 2.2 K (Kalberla et al. 2005; Kerp et al. 2011) but for J1936+2357 the HI brightness temperature is measured to be significantly larger ~ 96 K (Kalberla et al. 2005; Kerp et al. 2011).

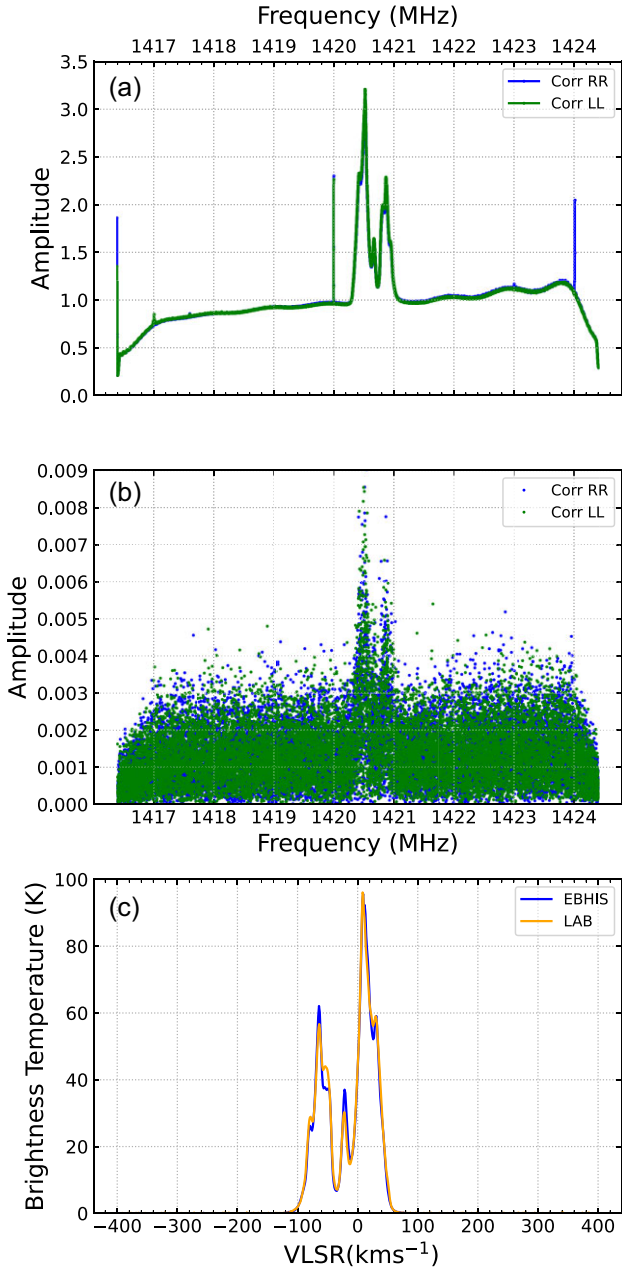


Figure 9. (a) The autocorrelations of antenna Westerbork showing the right and left circular polarization formed from observations of 1936+2357. (b) The cross-correlations of the baseline formed by antennas Westerbork and Jodrell Bank (~ 597 km) formed from observations of 1936+2357. The right and left circular polarization hands are shown in the colours blue and green, respectively. (c) The velocity profile of 1936+2357 obtained from the LAB and EBHIS Galactic hydrogen surveys. The data are plotted in the range of -400 – 400 km s^{-1} .

For J1936+2357, the H I features observed in the autocorrelations and cross-correlations, take the shape of the velocity profile of the H I gas.

We attempted to simulate the effect of this large increase in receiver noise on the cross-correlation data over a relatively distinct part of our 8 MHz band. The measured visibilities \vec{Z} will consist of the true visibility \vec{V} which will be affected by noise $\vec{\epsilon}$ with independent real and imaginary parts both normally distributed with mean $\mu = 0$

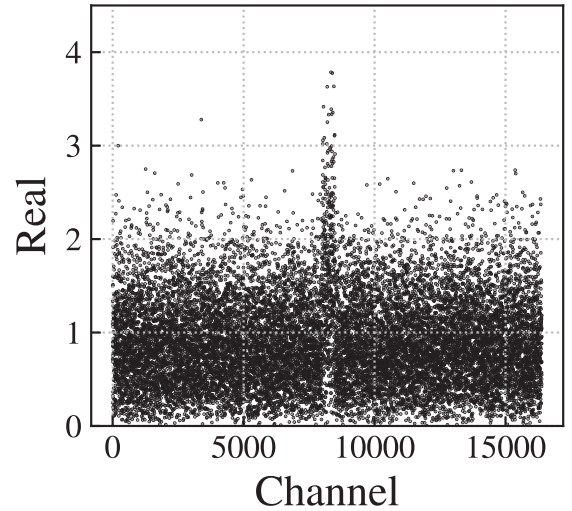


Figure 10. Simulated noise representing the system temperatures with an additional component fitted.

and variance σ^2 (Thompson, Moran & Swenson 2017) resulting in a complex normal random variable of the two components.

To simulate this effect, we generated random noise with a variance of 1 MHz over the entire 8 MHz which is divided into 16 384 channels, then fitting noise with a variance of 0.75 to channels 8000–8500 where the bulk of the feature lies. The resulting plot is shown in Fig. 10 which shows the real component of the noise against the channels which looks similar to the feature seen in the cross-correlations as shown in Figs 3(b) and (c).

We note that the simulated feature is similar to the one present in the EVN data, supporting the hypothesis that the feature is an artefact in the data, associated with the steep rise in the telescopes’ system temperatures associated with bright H I emission filling the primary beams. This artefact is not observed in the *e*-MERLIN cross-correlations. This is likely due to the different normalization processes employed in the EVN and *e*-MERLIN correlators.

3.3 Search for technosignatures in Kepler-111 b

Most cosmic radio sources exhibit a continuous, broad-band, power-law spectrum since the emission is typically dominated by synchrotron radiation. While some sources e.g. masers present relatively narrow spectral-line features, these are always broadened by thermal processes. For example, Cohen et al. (1987) showed that the lower limit of the line widths of OH masers is ~ 500 Hz. Artificial signals generated by technology are typically much narrower than this, and SETI surveys are thus tuned to detect narrow-band signals (\sim a few Hz). The relative accelerations between the receiver and the transmitter introduces a Doppler drift \dot{f} in narrow-band signals given as:

$$\dot{f} = \frac{d\bar{V}}{dt} \frac{f_{\text{rest}}}{c}, \quad (2)$$

where \bar{V} is the velocity along the line of sight relative to the transmitter and receiver, f_{rest} is the rest frequency at which the signals are transmitted and c is the speed of light.

3.3.1 Maximum image integration time

Assuming a typical maximum drift rate of 2 Hz s^{-1} (e.g. Enriquez et al. 2017) a narrow-band technosignature signal will move from

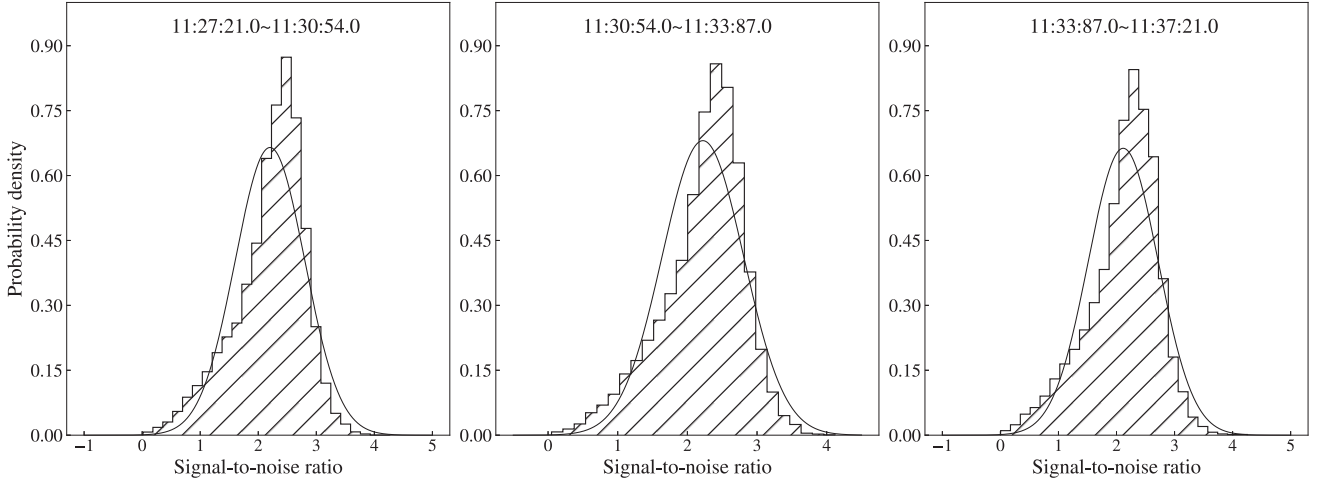


Figure 11. The SNR of the various cubes made using data from the first scan with Gaussians fitted. The first cube spans the time range 11:27:21.0–11:30:54.0 and has a mean SNR of 2.202 and a standard deviation of 0.600, the second cube spans the time range 11:30:54.0–11:33:87.0 and has a mean SNR of 2.223 and a standard deviation of 0.586, and the third cube spans the time range 11:33:87.0–11:37:21.0 and has a mean SNR of 2.115 and a standard deviation of 0.602.

one EVN channel to another in a time Δt_{int} given by:

$$\Delta t_{\text{int}} = \frac{\text{channel width}}{\text{drift rate}} = \frac{488 \text{ Hz}}{2 \text{ Hz s}^{-1}} \sim 240 \text{ s}. \quad (3)$$

This time-scale, therefore, sets a limit on the integration time we can use to produce images of Kepler-111 b – employing longer integration times would wash out the response of Doppler drifting signals with a bandwidth similar to the EVN channel width. For the two 10 min scans of J1926+4441, we thus divide the data into six 200 s chunks resulting in three cubes for each scan, and then made three-dimensional cubes in right ascension, declination, and frequency.

3.3.2 Position of Kepler-111 b

Kepler-111 b is a super-Earth with a radius $\sim 3.12 R_{\oplus}$ in a tight 3.3 d orbit around a G-type star (Kepler-111). Located at a distance of $657.223^{+6.014}_{-5.908}$ pc (Bailer-Jones et al. 2018), we find that the two sources lie within the same EVN image pixel – the maximum angle of separation between the two is indeed only $\phi \sim 0.07$ milliarcsecond. We must also take into account the proper motion of the system obtained from *Gaia* (Gaia Collaboration et al. 2016, 2018). Using these catalogues we calculated the position of Kepler-111 b to the date of the EVN observations.

As noted earlier, we subtracted the radio continuum response of J1926+4441 from the high-resolution data and phase rotated the data to the position of Kepler-111. As expected, the spectral feature described earlier (see Section 3.2) persists – see Figs 3(b) and (c). We, therefore, flagged the associated channels in our subsequent analysis.

3.4 SETI signal data analysis

We flagged channels 7900–8600 (each channel has a width of ~ 488 Hz and the H I line is centred on channel 8192) from the data set as these were dominated by the spectral feature associated with bright H I, in addition to ~ 500 channels at both edges of the 8 MHz band. Image cubes were made using the remaining 14 684 frequency channels. Since the location of Kepler-111 b is well known, we were able to make relatively small (32 x 32) images of the field. For each of the six cubes, the peak flux, r.m.s. noise, and the SNR were computed

for each of the channel maps and the SNR statistics were analysed by Gaussian fitting (see Figs 11, 12). In this analysis, we do not detect any signals in any channel that have a SNR in excess of 7.

We calculated the effective isotropic radiated power (EIRP) our observations are sensitive to using:

$$\text{EIRP} = 4\pi R^2 \sigma_{\text{thresh}} \text{SEFD}_{\text{array}} \left(\frac{\delta\nu}{n_{\text{pol}} t_{\text{int}}} \right)^{\frac{1}{2}}. \quad (4)$$

For the EVN observations presented here, $\text{SEFD}_{\text{RSG12}} \sim 14.4$ Jy and $\delta\nu = 488$ Hz, $t_{\text{int}} = 240$ s and $n_{\text{pol}} = 2$. At a distance of $R \sim 657$ pc, and assuming a detection as $\sigma_{\text{thresh}} > 5$, we estimate the EIRP we are sensitive to for Kepler-111 b is $\sim 4 \times 10^{15}$ W. We detect no sources with an EIRP beyond this limit in our data.

VLBI routinely brings together in the same array some of the most sensitive antennas in the world e.g. the Effelsberg and the Lovell with a system equivalent flux density (SEFD) of 20 and 35 Jy at 21 cm, respectively. This increases the likelihood of a detection on baselines formed by these antennas. However, comparisons of different SETI experiments are difficult since observing setups and instruments will usually vary, and also integration times. These limitations necessitate the use of a common figure of merit such as the continuous wave transmitter figure of merit (CWTFM) defined by Enriquez et al. (2017) as

$$\text{CWTFM} = \zeta_{A0} \frac{\text{EIRP}}{N_{\text{stars}} \nu_{\text{frac}}}, \quad (5)$$

where N_{stars} is the number of stars observed with N pointings, $\nu_{\text{frac}} = \nu_{\text{tot}}/\nu_{\text{mid}}$ is the fractional bandwidth used in the observation and ζ_{A0} is a normalization factor such that $\text{CWTFM} = 1$ when the EIRP is equal to the luminosity of the Arecibo’s planetary radar system $L_{A0} = 10^{13}$, $N_{\text{stars}} = 1000$, and $\nu_{\text{frac}} = 0.5$. We calculate a $\text{CWTFM} \sim 10^7$. This high value is because of the small fractional bandwidth used for this observation, the targeting of a single star using a single pointing and the relatively large distance to Kepler 111-b (657 pc).

4 CONCLUSIONS

VLBI offers many advantages for the detection and follow-up of SETI candidates of interest. The advent of software correlators has

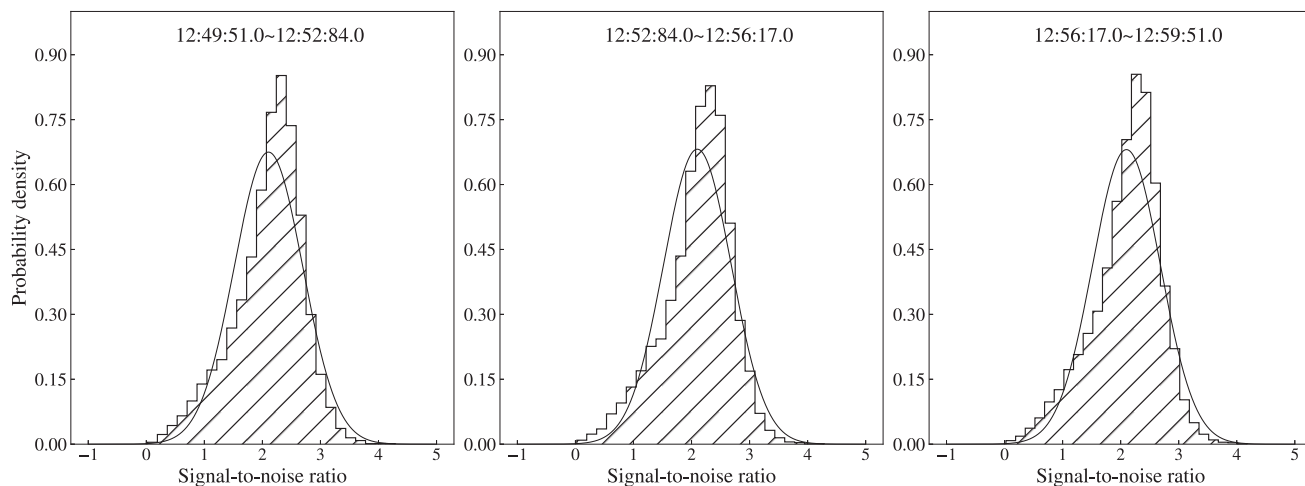


Figure 12. The SNR of the various cubes made using data from the first scan with Gaussians fitted. The first cube spans the time range 12:49:51.0–12:52:84.0 and has a mean SNR of 2.105 and a standard deviation of 0.591, the second cube spans the time range 12:52:84.0–12:56:17.0 and has a mean SNR of 2.100 and a standard deviation of 0.585, and the third cube spans the time range 12:56:17.0–12:59:51.0 and has a mean SNR of 2.100 and a standard deviation of 0.586.

presented us with the opportunity to exploit these advantages that include less susceptibility to terrestrial RFI added redundancy in the case that a SETI signal does not repeat, and the ability to provide precision locations for SETI transmitters in the image domain. To further develop this technique, we have observed sources selected from the NVSS with the EVN and phase referenced them with known VLBA calibrators in the Kepler field with the intention of identifying secondary phase calibrators that would be useful in future VLBI SETI studies of the same field. None of the potential secondary candidates were detected. However, EVN observations of one of the main calibration sources, J1926+4441, lying only 1.88 arcmin from Kepler-111 b, permitted us to place an upper limit on the prevalence of powerful transmitters in this system. We detect no transmitters with an EIRP $\sim 4 \times 10^{15}$ W at the time of our observations. During a careful analysis of this data set, we noticed a persistent spectral feature in the autocorrelation and cross-correlation data. In both cases, this is associated with Galactic HI in the field. For the high-resolution cross-correlation data, we have demonstrated that the feature is an artefact that appears in the data due to a significant increase in the receiver temperatures of the telescope array due to relatively bright HI entering the main beam of the telescopes.

The analysis of these EVN data has permitted us to develop and extend the analysis of VLBI data for the purposes of SETI and the detection of technosignatures. VLBI, and interferometry more generally, offer advantages to SETI that single dishes and beam-formed arrays do not. We have also demonstrated that one must be careful in interpreting narrow-band signals even when they appear in VLBI cross-correlations. However, as the performance of software correlators continues to increase, and our capacity to analyse large data volumes also improves (Xiangyuan Ma et al. 2023), VLBI can be an important technique for future SETI searches and in particular potential follow-up observations of candidate signals.

ACKNOWLEDGEMENTS

Research reported in this publication was supported by a Newton Fund project, DARA (Development in Africa with Radio Astronomy), and awarded by the UK’s Science and Technology Facilities Council (STFC) – grant reference ST/R001103/1. This work made

use of *ASTROPY*:³ a community-developed core PYTHON package and an ecosystem of tools and resources for astronomy (Astropy Collaboration 2013, 2018, 2022). This research has made use of the NASA Exoplanet Archive, which is operated by the California Institute of Technology, under contract with the National Aeronautics and Space Administration under the Exoplanet Exploration Programme. This work has made use of data from the European Space Agency (ESA) mission *Gaia* (<https://www.cosmos.esa.int/gaia>), processed by the *Gaia* Data Processing and Analysis Consortium (DPAC, <https://www.cosmos.esa.int/web/gaia/dpac/consortium>). Funding for the DPAC has been provided by national institutions, in particular, the institutions participating in the *Gaia* Multilateral Agreement. *e*-MERLIN is a National Facility operated by the University of Manchester at Jodrell Bank Observatory on behalf of STFC. The EVN (www.evlbi.org) is a joint facility of independent European, African, Asian, and North American radio astronomy institutes. Scientific results from data presented in this publication are derived from the following EVN project code(s): RSG12. The research leading to these results has received funding from the European Commission Horizon 2020, Research and Innovation Programme under grant agreements no. 730562 (RadioNet) and no. 101004719 (OPTICON RadioNet Pilot).

DATA AVAILABILITY

Data underlying this article are publicly available in the EVN Data Archive at JIVE at www.jive.eu/select-experiment and can be accessed with project codes RSG12 and RSW02. The *e*-MERLIN data and reduced EVN data will be shared on reasonable request to the corresponding author.

REFERENCES

- Astropy Collaboration, 2013, *A&A*, 558, A33
- Astropy Collaboration, 2018, *AJ*, 156, 123
- Astropy Collaboration, 2022, *ApJ*, 935, 167
- Bailer-Jones C. A. L., Rybizki J., Foesneau M., Mantelet G., Andrae R., 2018, *AJ*, 156, 58

³<http://www.astropy.org>

- Batalha N. M. et al., 2010, *ApJ*, 713, L109
- Batalha Natalie M. (Dec 2006) <https://ui.adsabs.harvard.edu/abs/2006AAS...20921008B> Optimization of the Kepler Field of View 2007 AAS/AAPT Joint Meeting, American Astronomical Society Meeting 209, id.210.08
- Beasley A. J., Gordon D., Peck A. B., Petrov L., MacMillan D. S., Fomalont E. B., Ma C., 2002, *ApJS*, 141, 13
- Becker R. H., White R. L., Helfand D. J., 1994, in Crabtree D. R., Hanisch R. J., Barnes J., eds, ASP Conf. Ser. Vol 61, Astronomical Data Analysis Software and Systems III. Astron. Soc. Pac., San Francisco, p. 165
- CASA Team et al., 2022, *PASP*, 134
- Cocconi G., Morrison P., 1959, *Nature*, 184, 844
- Cohen R. J., Downs G., Emerson R., Grimm M., Gulkis S., Stevens G., Tarter J., 1987, *MNRAS*, 225, 491
- Condon J. J., Cotton W. D., Greisen E. W., Yin Q. F., Perley R. A., Taylor G. B., Broderick J. J., 1998, *AJ*, 115, 1693
- Czech D. et al., 2021a, *PASP*, 133, 064502
- Deller A., Tingay S., Bailes M., West C., 2007, *PASP*, 119, 318
- Dickey J. M., 1979, *ApJ*, 233, 558
- Drake F. D., 1961, *Phys. Today*, 14, 40
- Enriquez J. E. et al., 2017, *ApJ*, 849, 104
- Gaia Collaboration, 2016, *A&A*, 595, A1
- Gaia Collaboration, 2018, *A&A*, 616, A1
- Gajjar V. et al., 2019, in The Breakthrough Listen Search for Extraterrestrial Intelligence Bulletin of the AAS 223 <https://baas.aas.org/pub/2020n7i223>
- Gajjar V. et al., 2022, *ApJ*, 932, 81
- Garrett M. A., SETI surveys of the nearby and distant universe employing wide-field radio interferometry techniques 2018, preprint (arXiv:1810.07235)
- Garrington S. T., Garrett M. A., Polatidis A., 1999, *New Astron. Rev.*, 43, 629
- Gordon Y. A. et al., 2020, *Res. Notes Am. Astron. Soc.*, 4, 175
- Gray R. H., Mooley K., 2017, *AJ*, 153, 110
- Healey S. E., Romani R. W., Taylor G. B., Sadler E. M., Ricci R., Murphy T., Ulvestad J. S., Winn J. N., 2007, *ApJS*, 171, 61
- Jonas J., MeerKAT Team, 2016, Proc. Sci., On the Pathway to the SKA. SISSA, Trieste, PoS#1
- Kalberla P. M. W., Burton W. B., Hartmann D., Arnal E. M., Bajaja E., Morras R., Pöppel W. G. L., 2005, *A&A*, 440, 775
- Keimpema A. et al., 2015, *Exp. Astron.*, 39, 259
- Kerp J., Winkel B., Ben Bekhti N., Flöer L., Kalberla P. M. W., 2011, *Astron. Nachr.*, 332, 637
- Lacy M. et al., 2020, *PASP*, 132, 035001
- Mosoni L., Frey S., 2004, Publ. Astron. Dep. Eotvos Lorand Univ., 14, 79
- NASA Exoplanet Science Institute, 2020, Planetary Systems Table, <https://catcopy.ipac.caltech.edu/doi/doi.php?id=10.26133/NEA12>
- Nimmo K. et al., 2022, *ApJ*, 927, L3
- Petrov Leonid (Jan 2021) The Wide-field VLBA Calibrator Survey: WFC5 *The Astronomical Journal*, ,
- Price D. C. et al., 2020, *AJ*, 159, 86
- Rampadarath H., Morgan J. S., Tingay S. J., Trott C. M., 2012, *AJ*, 144, 38
- Rowe J. F. et al., 2014, *ApJ*, 784, 45
- Roy N., Kanekar N., Braun R., Chengalur J. N., 2013, *MNRAS*, 436, 2352
- Sheikh S. Z. et al., 2021, *Nature Astron.*, 5, 1153
- Smith S. et al., 2021, *Nature Astron.*, 5, 1148
- Thompson A. R., Moran J. M., Swenson George W. J., 2017, *Interferometry and Synthesis in Radio Astronomy*, 3rd Edition. Springer Nature
- Tremblay C. D., Tingay S. J., 2020, *PASA*, 37, e035
- van Bemmell I. M. et al., 2022, *PASP*, 134, 114502
- Welch J. et al., 2009, *Proc. IEEE*, 97, 1438
- Wrobel J. M., Garrett M. A., Condon J. J., Morganti R., 2004, *AJ*, 128, 103
- Xiangyuan Ma P. et al. A deep-learning search for technosignatures of 820 nearby stars, 2023, preprint (arXiv:2301.12670)

This paper has been typeset from a \LaTeX file prepared by the author.