



## **Embracing BIM in its totality: a Total BIM case study**

Downloaded from: <https://research.chalmers.se>, 2026-04-06 07:11 UTC

Citation for the original published paper (version of record):

Disney, O., Roupé, M., Johansson, M. et al (2022). Embracing BIM in its totality: a Total BIM case study. Smart and Sustainable Built Environment, In Press.

<http://dx.doi.org/10.1108/SASBE-06-2022-0124>

N.B. When citing this work, cite the original published paper.

# Embracing BIM in its totality: a Total BIM case study

BIM

Oliver Disney, Mattias Roupé and Mikael Johansson

*Department of Architecture and Civil Engineering,*

*Chalmers University of Technology, Gothenburg, Sweden, and*

Alessio Domenico Leto

*Department of Architecture, Built Environment and Construction Engineering,*

*Politecnico di Milano, Milan, Italy*

Received 29 June 2022  
Revised 23 August 2022  
Accepted 24 August 2022

## Abstract

**Purpose** – Building information modeling (BIM) is mostly limited to the design phase where two parallel processes exist, i.e. creating 2D-drawings and BIM. Towards the end of the design process, BIM becomes obsolete as focus shifts to producing static 2D-drawings, which leads to a lack of trust in BIM. In Scandinavia, a concept known as Total BIM has emerged, which is a novel “all-in” approach where BIM is the single source of information throughout the project. This paper’s purpose is to investigate the overall concept and holistic approach of a Total BIM project to support implementation and strategy work connected to BIM.

**Design/methodology/approach** – Qualitative data were collected through eight semi-structured interviews with digitalization leaders from the case study project. Findings were analyzed using a holistic framework to BIM implementation.

**Findings** – The Total BIM concept was contingent on the strong interdependences between commonly found isolated BIM uses. Four main success factors were identified, production-oriented BIM as the main contractual and legally binding construction document, cloud-based model management, user-friendly on-site mobile BIM software and strong leadership.

**Originality/value** – A unique case is studied where BIM is used throughout all project phases as a single source of information and communication platform. No 2D paper drawings were used on-site and the Total BIM case study highlights the importance of a new digitalized construction process.

**Keywords** Building information modeling, Total BIM, Digitalization, BIM, BIM on-site

**Paper type** Research paper

## 1. Introduction

The benefits of using 3D models and BIM (building information modeling) are widely reported in research (Azhar, 2011; Sacks *et al.*, 2018; Volk *et al.*, 2014). Despite this, site work in construction projects is still dominated by paper in the form of 2D drawings and other design information (Davies and Harty, 2013). These 2D drawings are created from BIM at a specific moment in the whole construction process and the information in them remains mostly the same as before BIM existed (van Berlo and Natrop, 2015). For decades drawings have been criticized for containing redundant information, requiring a large effort to produce and maintain changes, having to manually take off construction information and not reflecting

© Oliver Disney, Mattias Roupé, Mikael Johansson and Alessio Domenico Leto. Published by Emerald Publishing Limited. This article is published under the Creative Commons Attribution (CC BY 4.0) licence. Anyone may reproduce, distribute, translate and create derivative works of this article (for both commercial and non-commercial purposes), subject to full attribution to the original publication and authors. The full terms of this licence may be seen at <http://creativecommons.org/licenses/by/4.0/legalcode>

This work is funded and part of the Digital Twin Cities Centre supported by Sweden’s Innovation Agency Vinnova under Grant No. 2019–00041 and by SBUF Grant No. 14063 (Development Fund of the Swedish Construction Industry). An earlier version of this paper was presented at CONVR 2021.



Smart and Sustainable Built  
Environment  
Emerald Publishing Limited  
2046-6099  
DOI 10.1108/SASBE-06-2022-0124

---

the current state of the building (Eastman *et al.*, 1974). Yet they continue to be used during the construction phase as the main source of information.

Previous studies have largely been concerned with BIM in the design phase, which is widely used and the benefits for communication, coordination and clash detection are generally accepted (Davies and Harty, 2013; Zaker and Coloma, 2018). So far little attention has been given to BIM throughout the whole construction process because implementation in the production phase has been limited. The lack of adoption in the production phase has been previously linked to issues surrounding the legal status of BIM in construction projects, cost and technology limitations (Eadie *et al.*, 2013; Englund and Grönlund, 2018). With BIM's unclear legal status, it is common to see conventional 2D drawings applied in parallel to support the construction process, even in so-called "BIM projects" (Davies and Harty, 2013; Calderon-Hernandez and Brioso, 2018; Koseoglu and Nurtan-Gunes, 2018). Two parallel processes exist creating, translating and maintaining both 2D paper documents and BIM, which leads to extra costs, errors and delays (Davies and Harty, 2013). Due to current rules, regulations and contract forms, BIM is far from becoming a standard on its own as 2D drawings are usually legally binding. In this context, BIM becomes obsolete and is not fully trusted or used on construction sites as it becomes a parallel information source often disconnected from the construction documents and drawings. As such, despite significant investment in creating BIM for projects, the potential benefits are not realized due to the simultaneous provision of 2D drawings. Ultimately, this is hindering the leap towards a more digitalized construction process, especially in the construction phase.

Succar (2009, p. 357) defines BIM as "a set of interacting policies, processes and technologies generating a methodology to manage the essential building design and project data in digital format throughout a building's life-cycle." Still, as previously mentioned BIM is often limited to the design phase and the term "BIM" has come to have many different associated meanings (Davies and Harty, 2013). More recently Cousins (2017) discusses an approach known as Total BIM where projects strive to embrace BIM in its totality. Total BIM projects are 100% digital where no paper drawings are produced at any project stage. BIM and its connected databases are the repository and carrier of information along all project phases (planning, design, construction and operation). Traditionally a huge amount of work goes into creating 2D drawings, where many are unused. In Total BIM, information is presented in a different way (directly connected to BIM), which enables designers to focus their time on constructability rather than drawing (Cousins, 2017).

This paper presents and investigates the overall concept and approach of a Total BIM project. This differs compared with traditional and "semi-BIM" projects, since in a Total BIM project no parallel processes exist creating and maintaining both 2D drawings and BIM. The case study is notable for its complexity compared to other advanced BIM projects which are often found in the infrastructure sector, and usually for rebaring work. The case study is a real-world office and laboratory construction project (Celsius in Uppsala, Sweden) where BIM was embraced in its totality – Total BIM. In the Celsius project, the demands and requirements of 2D drawings as legal documentation were superseded and BIM was recognized as the contractual document. BIM was actively used in all phases of the project by every actor, including on-site where workers extracted construction information from mobile BIM software.

This paper is organized as follows. It begins with a brief review of previous attempts at BIM focused projects which highlights common challenges and limitations. This is followed by our research methods. Interview findings are presented in four parts, according to the four main categories of the BIM implementation framework: *ecosystem*, *strategy and innovation*, *organizing and technology*. These findings are discussed in relation to traditional and previous leading BIM projects and the challenges and opportunities of the Total BIM

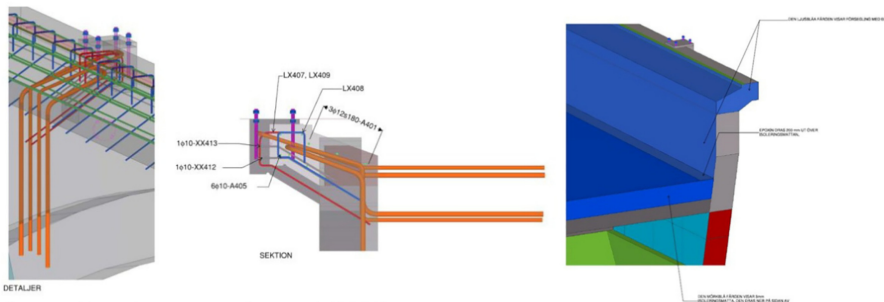
approach are considered. Finally, conclusions are drawn focusing on key success factors with an “all-in” BIM approach with implications for both practitioners and researchers in this area.

## 2. Background and related work

In construction projects, the benefits of using BIM to communicate the designer’s intent are limited when the final stage of information delivery is still dominated by paper drawings (Davies and Harty, 2013). There have been some previous attempts at pushing towards full implementation of BIM in the construction phase. In 2014, Czmoczek and Pękala (2014) reported a case study of an office complex in Warsaw, designed with the help of BIM, while 2D CAD files were secondary. The design process was estimated to be 10% faster and 80% more accurate than traditional methods (Czmoczek and Pękala, 2014). Czmoczek and Pękala (2014) concluded that BIM helps eliminate collisions, manage changes, order accurate quantities of materials, saves time and money. However, the use of BIM was limited to the design stage. 2D paper drawings had to be produced from the model because it was required by Polish law to use these on the construction site.

The designers of the Thames Tideway Tunnel project in 2017 (a large sewage system in London) aspired to eliminate 2D drawings and for all stakeholders to focus on a single source of design truth, the BIM model (Gaunt, 2017). They considered a model-based delivery approach much more efficient than producing 2D drawings but were required to produce them anyway as they were the legally binding construction documents. Therefore, BIM implementation was limited to the design phase. Gaunt (2017) states that savings realized by implementing BIM in the design phase are insignificant to the potential of that in the construction phase. They found that skill levels, engagement and software must improve for a more holistic BIM approach to occur. Even though using BIM in the Thames Tideway Tunnel project created savings in the design phase additional effort and expense were required to produce 2D drawings in parallel for the construction phase, limiting the potential benefits and value of BIM.

In 2013, the Rölfors bridge project in Sweden was realized without using traditional drawings. Agreements were established that gave BIM the same legal status as “construction specifications”, thereby placing them above “drawings” according to the General Conditions of Contract. The model was accessible on-site via tablets. However, due to limitations with BIM-viewer software at the time, site workers were not able to extract accurate measurements and specific information from the model. To solve this issue, the project had a structural engineer on-site to create Production-Oriented Views (POVs) from the model in consultation with the construction workers (Johansson and Roupé, 2019). The views contained measurements, dimensions, sections, object



Source(s): Johansson and Roupé (2019)

**Figure 1.**  
Illustration of  
production oriented  
views (POVs) in the  
Rölforsbron case

---

information and were color-coded, but were essentially just screenshots taken from the BIM and not interactive (Figure 1). These views were uploaded to a shared model repository that could be accessed on tablets to complement BIM. Whilst an innovative concept at the time, creating the POVs required additional resources and workers were not able to extract the information from the model themselves. Therefore, extra demands were placed on the project organization.

For the Norwegian Oslo airport expansion project, completed in 2017, a detailed BIM was created in the design phase. It was estimated that 50,000 paper drawings and documents were needed to carry out the reinforcement work (Mershbock and Nordahl-Rolfsen, 2016). Instead, they decided to adopt an on-site BIM approach using Tekla BIMsight software but only for the placement of the reinforcement, rather than the whole project. As Mershbock and Nordahl-Rolfsen (2016) note the project represents an early implementation of on-site BIM, where practical examples are rare and often limited by IT capabilities and available resources.

Recently in Scandinavia some projects have begun to be realized using the 3D model as the legally binding and contractual document on the construction site (Nohrstedt, 2017). The Slussen project in Stockholm, is the rebuilding of the 1930s junction between Södermalm and Gamla stan. The project started in 2019 and the completion date is scheduled for 2025. It was decided to only use 3D models in the project and not to use 2D paper drawings because the creation and handling of the latter wastes time (Cousins, 2017). The intention was to deploy “BIM kiosks” on-site to access the 3D model and virtual reality to help stakeholders visualize the project (Cousins, 2017). Working digitally was expected to eliminate creating and keeping up to date 15,000 paper drawings (Cousins, 2017). As more than 40 different contractors were involved in the project, working in BIM was identified as an easier and faster method for a common way of working. However, this was not the plan from the start and some early work in the project occurred using 2D printed drawings (Cousins, 2017). In the Slussen project, they used a single source of information and synchronized construction data with design data to reduce the information gaps that often occur in traditional projects.

Construction began on the Smisto Hydropower plant in Norway in 2015. In the project they aimed to only use the 3D model for design and construction as they found “drawingless” execution to be worth pursuing (Gaunt, 2017). A year into the project, by working with Revit, Civil 3D Navisworks and other software they were able to deliver BIM to the contractor without preparing any 2D drawings (Smith and Hansen, 2016). Significant improvements over traditional processes were found including, no need to establish or maintain complete drawings, which reduced possible sources of error (Smith and Hansen, 2016).

The Norwegian Randselva Bridge project was a recent winner of the Tekla Global BIM awards 2020 for best BIM project. It was constructed entirely without drawings where IFC models were predominantly used for construction and is the longest bridge to be built without drawings to date (Rybus, 2022; Ulvestad and Vieira, 2021). Although in its infancy several reasons were given for working with BIM and “drawingless” design. The main ones were that it is easier to understand the scope of the work, solve clashes, parametric design, BIM looks the same in any country, facilitates the procurement process and to prepare for more automation in the future (Ulvestad and Vieira, 2021). Rebars were modeled in Tekla and were directly ordered from the model, eliminating the need for manually made bar bending schedules (Ulvestad and Vieira, 2021). Early in the project they focused on who would use the model and what information they would need to extract from it (Ulvestad and Vieira, 2021). The aim was to be left with an as-built model that can be used as a digital twin. The project showed that it was possible to perform projects in this way, and that it may even be the preferred method in the future for large complex projects (Rybus, 2022). Despite this there were still software challenges, Solibri did not have its own cloud solution and it was difficult

---

to assign data to geometry through simple annotations using the available BIM viewers (Rybus, 2022).

The above examples are some of the current most advanced BIM projects throughout Scandinavia and beyond. Yet the implementation of BIM is often limited. 2D drawings are produced in parallel creating unnecessary work, structural engineers were also needed on-site to create POVs for construction as the software did not support taking measurements. In addition, the examples mostly concern infrastructure projects and the use of Tekla, which is designed to support a 3D model-based approach for rebar and steel structures. For example, the Rölfors bridge project used Tekla and at the time it would likely not have been possible to use alternatives like Revit.

Technology (software, interoperability and standardization) is a limiting factor in the drive towards using BIM in all stages of a construction project because as shown in the cases above additional work methods are required. Other obstacles highlighted by Sundqvist *et al.* (2020) include model quality, on-site education, technical support and user-friendliness of software. The availability of regular 2D drawings introduces another common problem, as workers then tend to fall back on traditional (non-BIM) ways of working during times of high-pressure (Sundqvist *et al.*, 2020). Contractual concerns also exist such as who controls the entry of data into the model, who is responsible for inaccuracies and keeping the BIM up-to-date, licensing issues, model ownership and costs (Azhar, 2011). Costs are often given as a reason for limited BIM use in projects, specifically for training workers in the use of new technology (Czmoch and Pękala, 2014; Eadie *et al.*, 2013). These issues are just some of the reasons why BIM use is limited today. Existing research reflects this where BIM is developed during the design phase and from the model construction drawings are created. The benefits cease to transfer fully over into the construction phase as BIM has limited use, does not have legally binding status and could therefore not be fully trusted as a single source of information. One of the core issues has been the inability for workers to take measurements directly from mobile BIM software on-site, which results in a mixed-mode (digital and paper-based) way of working. Using a BIM based approach can eliminate the use of 2D paper drawings, which are expensive, take a lot of effort to produce, print, maintain, update as well as risk using wrong or out-of-date documents (Koseoglu and Nurtan-Gunes, 2018).

This paper draws on a Total BIM case study to discuss an approach where BIM was embraced in its totality during the entire project from design and construction to the operation of the facility. Unlike the examples outlined above it was unique as it was a complex office and laboratory building rather than an infrastructure project. The infrastructure projects described above have mainly been concrete and rebar structures with limited multidisciplinary construction teams and primarily using a Tekla model-based approach. The case project, on the other hand, had many different disciplines and 40 sub-contractors with more than 300 individuals, which collaborate and coordinate on the construction site using BIM as the single source of information. This created demands on a new novel, innovative and digitalized production-oriented construction process, which is studied in this paper. The paper therefore contributes to the understanding of implementing and embracing BIM in its totality from design and construction to the operation of the facility. In contrast to other case studies and literature (Calderon-Hernandez and Brioso, 2018; Czmoch and Pękala, 2014; Davies and Harty, 2013; Eadie *et al.*, 2013; Englund and Grönlund, 2018; Koseoglu and Nurtan-Gunes, 2018; Sacks *et al.*, 2018), which focus more on a “Hybrid-BIM” approach, i.e.i.e. usage of BIM in order to produce 2D-drawings for construction. This paper focuses on Total BIM or “building-without-traditional-2D-drawings” and how it was implemented and used during the Celsius project. The Celsius case is unique, as it was a true Total BIM project, as BIM became the single source of information during the whole project.

### 3. Method

The following sub-sections introduce the case-study, the Celsius project, and how data were collected and analyzed.

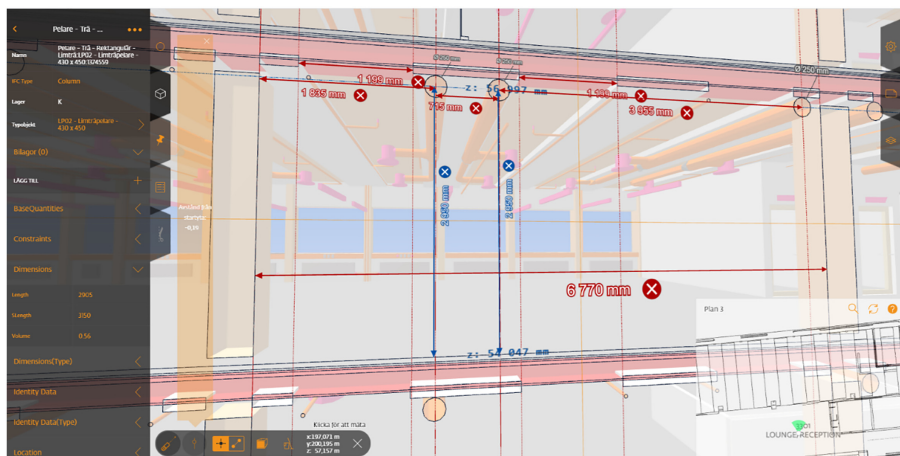
#### 3.1 Case study

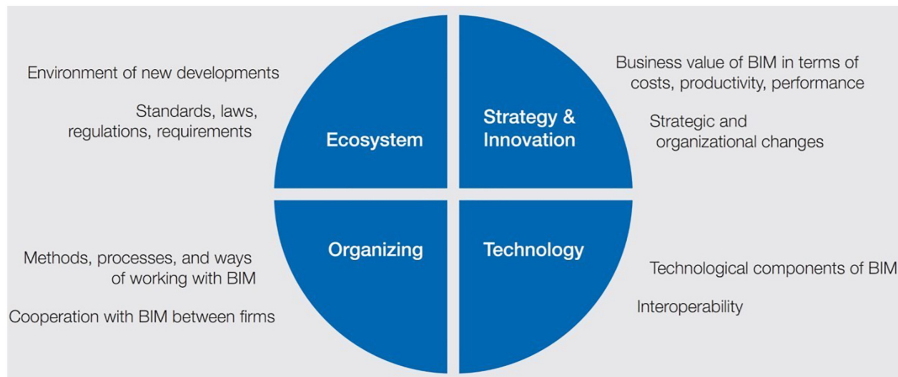
Our approach was to focus on a case study as a “force of example”, drawing on specific lessons learnt from a unique project (Flyvbjerg, 2006). This research investigates a BIM case project that strived to embrace BIM in its totality by implementing BIM technologies in all stages of the project to produce an office and laboratory building in Uppsala Science Park, Sweden. The building covered 12,000 square meters over 6 floors, with a project budget of roughly 45 million Euros, and was certified with LEED Platinum. Design work on the project started in 2017, construction began in 2018 and work was completed in November 2020. The project named Celsius was selected for this research due to the international recognition it received as the winner of the 2020 buildingSMART Award for its innovative and digitalized construction process. Notably, it was also the top-rated construction project in Sweden for project quality based on worker feedback in a survey conducted after the project was complete. The project was unique as BIM was legally binding, production-oriented BIM was created during the design and site workers produced the construction information they needed themselves on-site on mobile devices (Figure 2). The project was also delivered within time and under budget.

#### 3.2 Data collection and analysis

Primary data is gathered from qualitative semi-structured interviews. The interviewees were selected due to their role, knowledge and responsibilities within the project for planning, strategy and implementation of the Total BIM concept, both during design and construction. Additional data was gathered from informal discussions, presentations and question and answer sessions. Prior to commencing the interviews, the virtual design construction (VDC) strategist provided an extensive project presentation, which helped form the initial interview questions. The first interview was with the VDC on-site engineer, which occurred during construction of the project in March 2020 and lasted approximately one hour. After the project was complete six further interviews were held with the VDC strategist totaling eight

**Figure 2.** In the Celsius project the construction workers took their own measurements and extracted information directly from BIM using mobile devices and BIM-viewer software on the construction site





**Source(s):** Bosch *et al.* (2016), Sundquist *et al.* (2020)

**Figure 3.**  
Holistic research  
framework to BIM  
implementation

to ten hours. The VDC strategist was involved in both the design and construction phases of the project. One interview with the VDC strategist focused on the Celsius case in relation to the four main categories of the holistic research framework to BIM implementation (Figure 3) (Bosch *et al.*, 2016; Sundquist *et al.*, 2020). An additional interview was conducted after project completion with the design and construction project management leader, lasting 70 min. A further interview was also conducted with the site manager for the Celsius project, focusing on production planning and scheduling using production-oriented BIM. All interviews were semi-structured with open-ended questions to gather insights from the respondents (DiCiccio-Bloom and Crabtree, 2006; Yin, 2009). In this paper we apply a holistic research framework by Bosch-Sijtsema *et al.* (2016) and Sundquist *et al.* (2020) where the main framework categories are ecosystem, technology, strategy and innovation, and organizing. Analysis of the interviews occurs from a socio-technical point of view and investigates the contributing factors throughout the whole project for the BIM concept used. These results are presented as a loosely guided framework to serve a purpose for discussion. Findings were allocated where the authors deemed most appropriate, but many elements overlap categories and therefore, are not limited to the category that they are presented in.

#### 4. Findings

In the Celsius project, no traditional 2D paper drawings were used on-site. Workers extracted the construction information they needed directly from BIM-viewer software (StreamBIM) on mobile devices. They created their own interactive and dynamic production-oriented views containing the information they needed to conduct and plan their work on the construction site. In this context, they created measurements, sections, and extracted information directly from the BIM using StreamBIM on mobile phones or tablets. Further into the construction project they also started using the phone's camera and StreamBIM as a communication platform for design and construction issues, question handling, "as-is" and "as-built" communication between the design team, construction workers and sub-contractors. To achieve this BIM was embraced in its totality and used as the information source and platform throughout the whole project. To support this new novel innovative and digitalized construction process, many different aspects had to be accounted for and addressed. To present the different interconnected aspects the overall concept and holistic approach of the project are presented in Tables 1–4.

4.1 Ecosystem

The ecosystem category refers to the existing environment where BIM developments were introduced such as, standards, laws, regulations and requirements, which act as boundary conditions for the digital construction process. Additionally, implementing the Total BIM concept affected how the project environment and ecosystem were managed. In Table 1 the most important findings within this category are presented.

4.1.1 Standards. Standardized codes and names were used for objects and object information in BIM. These were added in the design phase and used in both pre-production and production. When standardized information was missing from manufacturers and suppliers, it was manually added whilst focusing on how it would be used later in the process (e.g. weight, responsible sub-contractor, etc.). By eliminating paper drawings, BIM became the carrier of information. All construction information had to be contained in BIM and readily accessible for those carrying out the work. This made it clear how construction should occur, which reduced on-site discussions about how to build. During the design there was also a strong focus on how the information would be used in production.

IFC files were used as standard throughout the project. Designers used them to exchange models, sub-contractors received them as part of the bidding process package, and they were later used in production as the source data for StreamBIM. IFC files were used due to their interoperability between different software.

4.1.2 Laws, regulations, requirements. BIM was the contractual and legally binding construction document and had a higher legal status than drawings throughout the project. Designers worked to produce a high-quality BIM, which was used in the tendering process with sub-contractors as well as during the construction process. It was the main information carrier in the project and no printed drawings were used. The high-quality BIM reflected more accurately what and how construction should occur. All objects in the model had coded information attached, which resulted in the BIM being legally more descriptive than 2D drawings.

Working with BIM and to not revert to using paper drawings were keys requirement of the project. Designers and sub-contractors that refused to use BIM were excluded from the project (which occurred once during design and once during sub-contractor tendering).

Ecosystem\*

Standards	<p><i>Standardized codes/names</i> were added to the model in the design stage (e.g. BIM objects) and used throughout the project</p> <p><i>BIM as the information carrier</i>: all construction information was either contained in or could be extracted from the model</p> <p><i>IFC file format</i>: standardized file format used when working with BIM design, bidding process and the BIM viewer software</p>
Laws, regulations, requirements	<p><i>BIM legally binding</i>: rich source of information which was used during the bidding process for sub-contractors and as the construction document</p> <p><i>Required use of BIM</i>: Designers and sub-contractors were required to use BIM to be part of the project</p> <p><i>Routines and guidelines for constructability</i>: Designers worked with production teams to establish guidelines for efficient levels of detail in BIM</p> <p><i>Responsibility structure</i>: It was clear who was responsible for supporting BIM on-site and the change order process</p> <p><i>Client owns the BIM</i>: As the model was developed for the client it was agreed that they would have ownership rights over the model</p> <p><i>Tracking changes and backups</i>: Structured way of working with changes and backups automatically saved in the cloud</p>

**Table 1.**  
Total BIM case study, celsius: overall concept and holistic approach connected to ecosystem

**Note(s):** \*Ecosystem: Environment of implementation and new developments; standards, laws, regulations; requirements

However, those with weaker BIM competencies but eager to engage in the concept were invited into the project to “fix the problem” together with the construction management (CM) company and to learn the necessary skills.

The high-quality BIM had flexible levels of detail and was developed with site workers in accordance with their needs to carry out construction. In some cases, sub-contractors with specialist knowledge further developed plans (e.g. adding sections for vents, where designers were not sure about the machines the sub-contractors had available). Routines and guidelines were developed to reach efficient levels of design for construction to occur smoothly and accurately.

The CM company was not only responsible for the design and construction process but also responsible for supporting BIM on the construction site and ensuring that workers had sufficient knowledge to use the mobile BIM-viewer software efficiently. The process for change orders was clear. These were also handled through the mobile BIM-viewer software. Changes and backups were automatically logged and saved to the cloud to ensure that data was secure. Any changes made to the BIM in the design phase were communicated during the weekly design meetings.

The CM company pushed the use of BIM throughout the project and managed the bidding process. It was decided that the client would own the BIM as they were the ones paying for it to be developed. This guaranteed them future access for facility management and if the BIM needed to be updated. A few months after the project was complete, final BIM updates occurred and the client received an accurate “as-built” digital twin.

#### 4.2 Technology

The technology category refers to the technological components and interoperability where BIM developments were introduced such as, software, hardware and supporting IT system. In Table 2 the most important technology related findings are presented.

4.2.1 *Technological components.* Cloud-based BIM was used throughout the project providing access to a single source of up-to-date information for both designers and site

---

#### Technology\*

---

Technological components	<p><i>Cloud-based BIM:</i> A single source of up-to-date information, accessible from mobile devices on-site</p> <p><i>Mobile BIM:</i> Full access to the model in BIM viewer software (StreamBIM) on the construction site. In which workers could produce the views, sections and measurements that they needed</p> <p><i>In-app information exchange</i> on the construction site occurred via mobile BIM viewer software</p> <p><i>In-app progress tracking:</i> On-site progress was tracked within the BIM viewer software by taking photo documentation</p> <p><i>Wi-Fi support:</i> Wi-Fi installed across the construction site to access the mobile BIM data</p> <p><i>Automated updates</i> occurred during nights in the design stage, once a week in the construction phase, by using IFC and SimpleBIM</p>
Interoperability	<p><i>Interoperability through cloud-based BIM:</i> Autodesk 360 software used for synchronizing and coordinating design information between the different teams</p> <p><i>Custom filtering:</i> BIM object information was filtered to the sub-contractor's discipline</p> <p><i>Custom reference planes:</i> Custom views and reference planes could be added to aid site workers with dimensioning, which were replicated on-site</p>

**Note(s):** \*Technological components of BIM, interoperability (type of software), technological platform and framework for collaboration, standards (structure info, naming the objects, BIM guidelines)

**Table 2.**  
Total BIM case study, celsius: overall concept and holistic approach connected to technology

---

workers. Designers could be certain that they were always working with an up-to-date version of BIM and avoided having to send or retrieve files from each other. Designers worked to produce a production-oriented BIM that facilitated the needs of site workers. During construction BIM was retrieved from the cloud and accessible on mobile devices by using mobile BIM viewer software (StreamBIM), ensuring that they were always working with the latest version, even after weekly updates occurred.

Site workers had full access to BIM on-site through the StreamBIM software, which had a user-friendly interface for measuring, sectioning and creating 3D views (Figure 2). Workers created the views that they needed to perform their work on-site. iPads were used in teams to provide mobile access to BIM, allowing workers to always have the construction information and views with them. The same device was used for communication, design markups, inspection documentation, as-built documentation and checklists for controls such as safety. It was important that all information was accessible in one application rather than requiring workers to keep switching to different ones. Therefore, the creation of “drawings” was transferred to on-site where construction workers created their own production-oriented views in StreamBIM, rather than designers providing them with 2D drawings. This also helped to ensure that only relevant views were created and 2D drawings were not necessary.

Working digitally and using StreamBIM improved how information was handled. By communicating through StreamBIM information was connected between users and the model. This communication was more transparent than traditional means (e.g. a replacement for emails where information chains are commonly lost and broken or outdated files are shared). User requests were also automatically logged, and users had access to what they needed. By linking information exchange to the model, it was easier to flag any problems by marking areas on the model, attaching photos and adding descriptions. This helped the receiver to quickly decipher the problem and provide quick solutions. Construction progress was monitored by taking photos in StreamBIM using mobile devices, which documented the project whilst it was being built. In this way the design team, construction workers and the different sub-contractors could communicate construction issues, raise questions, create “as-is” and “as-built” documentation and prepare and plan their work before they arrived at the construction site. Wi-Fi was installed across the construction site as it was essential to have fast and reliable Internet connectivity to access data and information in StreamBIM.

During the design phase, data was stored in the cloud by using the Revit plugin RTV Tools to create automatic export schedules (every night) for saving, updating and legally archiving IFC files. SimpleBIM was also scripted to trim, color coordinate and clean IFC files from Revit, Tekla and ArchiCAD. During the construction phase weekly BIM updates occurred and were uploaded to the cloud every Friday. Site workers then had access to them at the start of the following week.

*4.2.2 Interoperability.* To accomplish the CM company’s vision, it was established early in the design phase that a cloud-based design process would be used. Since most of the design team worked and designed in Autodesk Revit, they recognized Autodesk 360 as an interoperability and collaboration platform. Design teams were able to work efficiently together in one place through cloud-based BIM, with automatically synchronized data and information (other software such as Tekla and Solibri was also used where IFC files were exchanged between programs). Work occurred live in BIM, which required good communication and strong project leadership to communicate changes (e.g. if an architect moves a wall, who else is affected).

Instead of having to search through different documents, drawings, applications or menus, site workers were able to quickly access the information they needed for construction with a single press of a button within the StreamBIM application. Object information was custom filtered to the sub-contractor’s discipline and interest, where templates were created to provide them with direct easy access to what they needed. In StreamBIM it was also

possible to create custom reference planes, in custom views. These reference planes could be duplicated on the construction site (e.g. chalk lines on slabs, walls, etc.), enabling and helping workers to accurately measure where to assemble the building components and building parts. Both horizontal and vertical reference planes helped the alignment between the virtual and the real world. Workers were able to fully customize the process to fit their own construction information needs, e.g. dimensions, measurements, product information etc.

### 4.3 Strategy and innovation

The strategy and innovation category refers to the business value of BIM in terms of costs, productivity and performance. The Total BIM concept affected strategy work, cost structures, productivity and performance related to the project. In Table 3, the most important strategy and innovation related findings are presented.

*4.3.1 Costs.* The focus on BIM shifts the cost structure in the project. Extra demands were placed on creating high-quality production-oriented BIM that can be used as a single source of information in the construction phase. This increased design costs from 11% to 13% of the project total. The entire project still came in 2% (€900k) under budget despite additional unexpected costs (€1200k) for piling early in the project.

Most site workers had not worked directly from BIM before so there were additional costs for educating and supporting them. There were also extra costs for IT in the project such as StreamBIM licenses (supporting 300+ users), Wi-Fi across the site, BIM kiosks with large TV screens and shared mobile devices (e.g. iPads). The costs associated with these were absorbed into the budget for construction costs. However, as construction information was delivered digitally, there were no printed documents in the project. This resulted in savings as there were no costs for printing, re-printing or maintaining drawings.

It was easier to make budget adjustments for cost changes in the project as quantity data from BIM was linked to the same Excel sheet that sub-contractors had used to submit their

---

#### Strategy and innovation\*

---

Costs	<p><i>Re-structuring of costs:</i> Increased design cost from 11% to 13% of the project total but the entire project came in 2% (€900k) under budget despite additional unexpected extra piling costs (€1200k)</p> <p><i>BIM education:</i> The costs for educating and supporting site workers/sub-contractors on-site was absorbed into the budget for the construction process</p> <p><i>IT:</i> Costs for StreamBIM licenses, Wi-Fi, BIM kiosks and shared mobile devices connected with implementing the BIM approach were included in the project. (300+ users)</p> <p><i>No drawing costs:</i> No need to print, re-print and maintain paper construction documents</p> <p><i>Cost adaptability:</i> Cost lists could be automatically updated from BIM when change orders occurred</p> <p><i>Logistics costs reduced:</i> 80% fewer deliveries to the construction site compared to a similar project, due to improved early planning</p>
Productivity, performance	<p><i>Quality BIM</i> enabled construction to occur efficiently and eliminated unbudgeted changes. The project was completed 2 months ahead of schedule</p> <p><i>Reduced waste:</i> A single process and high-quality BIM use from design to construction reduced mistakes, guesswork, changes and enables more prefabrication</p> <p><i>Single source of information:</i> BIM replaced drawings and removed duplication work. Construction information was accessible in one place (cloud-based BIM)</p>

**Note(s):** \*Business value of BIM in terms of costs, productivity, performance

**Table 3.**  
Total BIM case study, celsius: overall concept and holistic approach connected to strategy and innovation

---

bids. Therefore, as new project conditions arose, quantity lists were scaled, and cost changes were clear.

Logistics costs in the project decreased due to reducing the number of deliveries to the construction site by 80% compared to a similar project in the same area. This was possible as BIM supported earlier quantity data calculations in the project and therefore facilitated better planning. The CM company implemented a logistics hub where deliveries were sent through before arriving at one of the four designated zones on the construction site.

*4.3.2 Productivity, performance.* An aim the CM company had before the project started was for construction to occur in the way that designers intended and with fewer errors. They were able to achieve this in the Celsius project by developing BIM to the standard that was required for it to be used in the construction process. Eliminating unbudgeted changes was a key factor in completing the project two months ahead of schedule. Since site workers were more accurately able to produce what designers intended, waste was reduced due to less guesswork, mistakes and changes. They also considered prefabrication as a way to further reduce waste in the future, which is made possible by more detailed planning, earlier in the project.

BIM was the single source of information in the project from design to construction. The vision was to work more efficiently by replacing the process of using drawings (e.g. measuring, guesswork, interpretation errors and searching for information) with a single source of information (cloud-based BIM) and eliminating duplication work (producing drawings). BIM was used on-site rather than many versions of different drawings, eliminating “information islands” and disconnected information sources commonly found in traditional projects. For elements that were hard to illustrate using 3D, 2D digital “mega” PDF’s were created which were connected to BIM. This was used for some of the electrical work and some overviews of floorplans in the project.

#### *4.4 Organizing*

The organizing category refers to methods, processes, ways of working with BIM and cooperation with BIM between firms. The Total BIM concept affected business processes and organizational structures. In [Table 4](#) the most important findings within this category are presented.

*4.4.1 Methods and processes.* The CM company was responsible for teaching sub-contractors how to use the BIM viewer software when they arrived at the project. VDC and IT support were on-site to ensure that technical issues were solved, and workers were provided with the knowledge they needed. Site workers were initially introduced to the BIM based work method and tools with an introductory presentation. A self-learning and supportive environment were encouraged when using StreamBIM.

By digitizing construction information, access and user-friendliness were improved over traditional 2D documents. Information, data and requirements were linked to the model, resulting in easier navigation. By working in this way, all information became transparent amongst stakeholders, as everything was derived from the cloud, which improved on-site coordination. There was no conflicting construction information as BIM was the single source of information. Users had access to the cloud, ensuring that they were always working on the latest version, rather than having to deal with multiple versions as commonly found with paper drawings. This was seen by the CM company as an important step forward, which was highlighted with an example from a previous project, where an outdated IFC file had been sent to a manufacturer for a glass façade.

StreamBIM was the single tool for handling production related tasks rather than closed e-mail chains, etc. which increased collaboration between site workers, designers, and management due to a more integrated process. Within StreamBIM workers could raise questions and highlight problems, which were ideally resolved within 24 h. The BIM approach

in this instance also eliminated the need to come up with costly on-site solutions since problems were solved by the design team rather than construction workers. Increased effort spent on design helped to improve work conditions on-site, since at an early stage in the project more focus was put on constructability. Furthermore, the extra effort in the design stage improved data quality, which made it possible to make more informed data-driven decisions.

Celsius was a project where sub-contractors were provided with quantity take-off lists, sub-divided IFC files and technical documents taken from BIM. This shifted costs away from sub-contractors to the project as they saved time by not having to measure details. The result of this was that more bids were received, and they were easier to evaluate as they were more even, which eased concerns that elements had been missed or forgotten about. Fewer questions were also raised during the bidding process. However, some sub-contractors continued trying to take their own measurements from BIM as they did not read or understand the attached documentation, which may lead to losses. If a sub-contractor refused to use BIM, they were excluded from the project.

By not giving the workers the opportunity to use traditional drawings, they were forced to use new digital working methods, which some were reluctant to do at first but positive about by the end of the project (others were happy that a project was finally being done this way). Initially some site workers were hesitant to embrace BIM. However, at the end of the project a survey was conducted, and it was the top-rated construction project in Sweden for project quality based on worker feedback, with many comments directed towards using BIM in production and using StreamBIM as a communication platform. Thus, highlighting the shift in attitude from project start to end.

4.4.2 *Cooperation with BIM between firms.* The CM company was behind the vision to implement BIM throughout the whole project with guidelines and requirements supported by the client. The CM company was also responsible for ensuring the project's success.

---

Organizing\*

---

Methods and processes	<p><i>Education and technical support:</i> The CM company provided on-site education and support for site workers</p> <p><i>User friendliness and access:</i> Working digitally improved access to information</p> <p><i>No conflicting information:</i> One up-to-date centrally located source of information</p> <p><i>Task management:</i> Production tasks were handled through StreamBIM's user interface</p> <p><i>Decision making:</i> The increased effort in the design stage improved data quality, improving data driven decisions</p> <p><i>Work environment:</i> More effort spent on design increased the focus on constructability</p> <p><i>Streamlined bidding process:</i> Bidders were provided with relevant model data and quantities. More bids were received with less variance between them, and fewer questions were raised during the process</p> <p><i>Cultural transformation:</i> There was a positive change in attitude towards the BIM concept. Site workers rated it the top project in Sweden for project quality</p>
Cooperation with BIM between firms	<p><i>Client relationship:</i> The CM company were behind the vision to implement the BIM approach with guidelines and requirements, supported by the client</p> <p><i>Information transparency:</i> During construction, information for the different stakeholders was accessible from cloud-based BIM, which facilitated better coordination</p> <p><i>Weekly co-located design meetings</i> occurred where work was performed live on the model and designers communicated and coordinated (ICE methodology)</p> <p><i>Workshops</i> were used to create engagement with the BIM approach</p> <p><i>Engagement of users:</i> StreamBIM on mobile devices supported users and helped create engagement throughout construction</p>

**Note(s):** \*Methods, processes, and ways of working with BIM; Cooperation with BIM between firms

**Table 4.**  
Total BIM case study, celsius: overall concept and holistic approach connected to organizing

By working with cloud-based BIM information was accessible on demand, provided access had been granted. As StreamBIM contained all information needed for production sub-contractors were able to see what other disciplines were working on, which helped facilitate communication and coordination on-site.

In the design stage, weekly co-located meetings took place. During these meetings work occurred live on the model, issues were resolved, and updates were communicated (integrated concurrent engineering (ICE) methodology). Workshops were also held by the CM company to engage designers early in the project to work with the BIM approach, which was crucial to achieving the goal of production-oriented model-based design. One design company was excluded from the project as they refused to work with BIM based delivery.

Sub-contractors engaged in the BIM approach by using mobile devices and integrated cameras for communication, coordination, administration, information handling, question-answer handling, case/issue management and controls/protocols. Site workers took the initiative to use these tools, which were simple and easy to use in the StreamBIM software.

## 5. Discussion

The Celsius case is an example of a project where BIM was totally embraced throughout the design and construction phase, which after completion provided the client with a digital twin for facility management. What is unique about this case is the extent that BIM was used during production, where site workers were able and required to extract construction information directly from BIM. Establishing BIM as the contractual and legally binding construction document as well as excluding 2D paper drawings was key to achieving this. In this case cloud-based BIM became the single source of information and communication platform for the project. To support this new novel, innovative and digitalized construction process, many different aspects had to be addressed and accounted for during the project. The holistic BIM approach, implemented by the CM company throughout the project united commonly found fragmented BIM uses into an approach where BIM was embraced in its totality, shifting focus towards creating and using production-oriented BIM.

### 5.1 Embracing BIM in its totality “Total BIM”

Although many of the individual BIM elements applied in the Celsius project are exotic, such as having BIM as the legally binding document, no 2D paper drawings, and constructing directly from BIM, they are actually not unique. Instead, what truly sets it apart is using them all together in a single project. There are some previous attempts from practice at using BIM in this way in production, but mainly within Scandinavia and often limited to infrastructure projects. What makes the Celsius case special is the shift towards production-oriented BIM, incorporating all the elements described within a single project, fully embracing BIM. By adopting this approach site workers were able to construct directly from BIM, creating the drawings and views themselves that they needed to conduct the work.

The CM company was behind the “all-in” BIM approach rather than a “half-in” or “mixed-mode” of working. Traditionally it is common that separate parallel processes exist where BIM is developed during the design stage, which is then used to produce 2D drawings. During this traditional process BIM becomes obsolete and replaced by drawings in the last stage of the design process, as they are the common legal and construction document. Trust is lost in BIM as it ceases to be regularly updated and workers lack the confidence to use it on the construction site as a single source of information. Instead, in Celsius they developed a high-quality BIM that could be used for construction. The process was supported by the CM company that was involved both during the design and construction of the project. By going “all-in” on BIM, efforts were focused on a single representation and single process, instead of the extra demands of creating drawings. By having a single representation (BIM), the burden of supporting two representations and processes is lifted

---

and conflicts between them are no longer an issue. Workers were also not able to fall back on traditional methods as 2D paper documents did not exist. This led to new innovative work methods that had previously been attempted in the Røfors bridge project back in 2013, but were not effectively realized until Celsius. It is generally accepted that increasing BIM implementation in projects is an increasingly challenging task for stakeholders (e.g. going from BIM level 2 to 3) (Succar, 2009). But, by focusing on a single representation, we question if the BIM approach in Celsius really is more challenging than current “mixed-mode” projects. It must be easier for both the design and the construction team to have a single source of information and representation that they can fully focus on and trust, rather than having two or more sources, which need to be cross-checked and updated throughout the process. These “mixed-mode” processes could cause expensive mistakes and construction errors, which was one of the main reasons why the CM company wanted to use BIM as the single source of information.

Software was crucial to the success of the Celsius project, most notably the use of StreamBIM on-site. Previous projects have been limited by software, such as the Røfors bridge project where workers could not extract construction information directly from BIM. Functionality and user-friendliness are crucial factors for site workers to be able to engage with BIM. StreamBIM provided this with simple but powerful viewing, sectioning, filtering and measuring functionalities, which enabled production-oriented views to be created on the fly by workers on-site. By having this application available on iPads and mobile phones, workers could take the process a step further by using cameras and software features for issue management and controls, supporting the feedback process. This cloud-based, production-oriented BIM became the communication platform for the project, where design teams, construction workers and the different sub-contractors could communicate construction issues, questions, maintain “as-is” and “as-built” documentation, and plan their work before they arrived at the construction site. Throughout construction, design teams continued to work on the model, reducing the need for on-site solutions. The cloud-based solution also ensured that workers were always using the most up-to-date version.

Site workers could use virtual reference planes in the digital model and compare them with real (physically painted) reference lines on the construction site. Since production-oriented views are created by site workers, they can take the measurements they need and relate them to the current state on the construction site and known reference objects or lines in the real world. They are no longer limited to the dimensioning provided to them by the design team, but instead have the possibility to take more measurements (in all directions) and more accurately. They also have more information available to them by working in 3D rather than with traditional 2D drawings, which may provide a more realistic visualization of the designer’s intent (Ghaffarianhoseini *et al.*, 2017). This enables them to carry out their work more efficiently, by extracting more accurate measurements and information from BIM.

Previous studies and BIM use have mostly been concerned with the design stage and the term BIM has come to have many different meanings (Davies and Harty, 2013). Cousins (2017) discusses the concept known as Total BIM, where BIM is embraced in its totality. BIM is seldom used as the unique source of construction information or legal documentation, yet they were in Celsius. The case study findings further highlight the unique “all-in” BIM approach implemented by the CM company. We find that the Celsius project is one of the first to really embrace BIM in its totality – Total BIM, based on our understanding of Total BIM today. What sets it apart is integrated BIM use in a complex construction, throughout the whole construction process, including its use on-site and legally binding status, e.g. moving from BIM level 2 to level 3 (Succar, 2009). It was also considered successful as the project was delivered within time, under budget, highly rated in worker surveys and BIM adopted in all project stages.

### 5.2 Challenges and competencies

Working with the BIM concept used in Celsius presents challenges. BIM object and product information are imported into BIM, which helps avoid design errors and helps during the

---

bidding process. But sometimes it is difficult to track and make decisions early in the design process before the sub-contractor is decided. Standard, representative components are often available in the BIM authoring software but not always the actual ones that will be used on the construction site, which may affect clash detection due to different dimensions (e.g. this occurred in the Celsius project with sprinkler systems). The CM company stated that there needs to be an increased focus on having the specific product components in BIM that they are going to use and purchase during the construction stage and that is important to develop a standardized object library that can be reused in future projects.

Even if designers can produce a high-quality model there needs to be follow through from production, otherwise the concept fails. In Celsius the CM company was able to achieve this by being involved in all project stages. Additionally, the approach is reliant on the vision of the people involved, their engagement and leadership skills. Clear goals were set early in this project and communicated through workshops to get people onboard. Taking workers out of their comfort zone, getting them to try something new and trusting the vision required strong project management. By not producing paper drawings, workers had little choice but to engage with new technologies (e.g. StreamBIM) and by implementing it in this way the sub-contractors could not fall back on the traditional way of working with printed drawings.

A common concern is that small firms may be excluded from high-end BIM projects due to a lack of competencies and resources (Dainty *et al.*, 2017). However, more bids were received compared to similar projects and Celsius simplified this process by providing firms with quantity data. The bidding process can be costly for small firms due to the time-consuming process of extracting quantities from 2D drawings, but in this case, it was made easier. A recent study has shown that quantity take-off and cost estimation using BIM is often 10 times faster and more accurate than the traditional drawing-based process (Brohn, 2018). In the Celsius case the bidding sub-contractors could put the time and effort into production planning, to work smarter and more efficiently during construction, instead of performing time-consuming quantity take-off tasks. The on-site BIM viewer software with its user-friendly interface, all-in-one approach and filtering template feature aided the learning process of workers that were unfamiliar with BIM. The CM company also provided education and created a supportive learning environment on the construction site. Costs associated with the software licenses and training were included in the project budget, which again shifts the burden away from small firms. By the end of the project feedback was overwhelmingly positive towards the BIM approach. As competencies develop less training will need to be provided and more information can be found by users themselves. However, working in this manner is very dependent on the people involved. It was recognized in this project that they needed to document more and update manuals so that another person could take over if required. User engagement was a vital aspect of the project's success and those who failed to align with this vision were excluded, as was the case with one design company and one of the sub-contractors. Celsius challenges the general understanding of the effects on different stakeholders in high-end BIM projects, and as mentioned extra demands were placed on designers, project management and leadership. Implementing the Total BIM concept may also digitally disrupt the traditional way of working within construction projects as the transformative effects of digital work methods occur. Roles and responsibilities will be affected by using BIM as the contractual document, the single source of information and as a central communication platform. This paper has outlined some examples of this such as sub-contractors that were unwilling or unable to engage with the digital work methods and the added effort for designers to create a high-quality accurate design.

### *5.3 Project structure changes and legal aspects*

Site workers were no longer the consumer of static 2D drawings but instead creators and consumers of information in BIM (drawings, views, sections, product information etc.). They

---

were given the possibility to create 3D views, i.e. Production-Oriented Views (POVs), to display information in the most suitable way for themselves. In the future building design may focus on what is most suitable for the site worker, i.e. enabling seamless switching between interactive 2D and 3D views within BIM-viewer applications on-site. Concerns are often raised about transforming work methods, for example, increased mistakes and responsibility. However, this often assumes that the 2D world with paper drawings is perfect, when in fact many of these challenges already exist (mistakes measuring). One worker reflected on this upon project completion saying, “he had focused too much on what could go wrong instead of what could go right.” This shift from consumer to creator and producer on-site helps save time and expense. Extra effort is spent on creating a high-quality production-oriented BIM but consequently reduces the amount of expensive ad hoc solutions on-site.

The BIM approach used in Celsius places a higher relative cost on the design phase, an increase of 18% (compared with a similar project). The investment was made to create a high-quality production-oriented model. Compared with traditional projects there were additional costs for BIM and IT, but there were no costs for creating or printing paper drawings. The extra demands placed on designers with creating production-oriented BIM may in time be offset by being able to focus on a single representation. Focus can shift away from the parallel processes that exist today, creating both BIM and 2D drawings. In advanced BIM projects a redistribution of costs and resources occurs. Design costs increase but more effort is spent on building smarter, which improves the construction process, reducing the need for last minute changes. As the Celsius project was delivered under budget and on time, it may be worth considering if the Total BIM approach is a suitable path forward for the construction industry to avoid the well-known cost overruns and delays usually associated with projects (Flyvbjerg *et al.*, 2002). In a Total BIM project, the cost structure changes where there are more upfront costs for the design stage, to perform more detailed planning. But this allows for more accurate cost estimation and smarter work methods during the construction phase, reducing costs late on in projects for errors and re-work.

The CM company decided that the client would own the BIM at the end of the project. This is still a much-debated topic as data ownership and access are contentious issues (Ragab and Marzouk, 2021). To realize the full benefit of the Total BIM approach designers must be willing to share information in the model, which can later be handed over to the client for use in facility management. The development of high-quality BIM during the project can also aid the development of digital twins both during construction and for use in facility management.

Perhaps the most daunting aspect employed by the CM company was to use BIM as the contractual and legally binding construction document (IFC file format), completely replacing paper drawings. Although this has been done previously in Scandinavia, there are still no turn-key solutions. Extra resources had to be spent modifying standard contracts to realize this, but by issuing no paper drawings it was impossible for workers to fall back on traditional methods. Therefore, they had to embrace the approach. Due to local regulations, it may not be legally possible to do this in all countries. However, the success of Celsius highlights the need for this issue to be raised and addressed by authorities to take BIM to the next level and fully embrace the Total BIM concept. Furthermore, it was recognized during the Celsius project that BIM in this case was more detailed and legally descriptive than 2D drawings, as it described the quantities and design in 3D (Lindström, 2021).

#### 5.4 Holistic approach

The Celsius project was considered a success, embracing new technology, reduced rework, delivered under budget and ahead of schedule. Based on our understanding today, Celsius was a Total BIM project, where stakeholders embraced BIM in its totality. The overall concept and holistic approach of Total BIM in the Celsius project have been identified and grouped into four main categories and eight sub-categories (Figure 3). As previously mentioned, the categorization serves as a guide for discussion. Some factors may appear more important than others (e.g.

---

production-oriented design, BIM legally binding as the construction document etc.) and they each have their merit. However, it is the overall approach, where all factors are incorporated together and the strong interdependencies between them that enables significant benefits to be realized.

## 6. Conclusion

Until now BIM implementation has mostly been limited to the design phase of construction projects. In the rare cases BIM has been used in production its impact has been limited due to technical limitations and reliance on traditional 2D paper drawings. Issues with parallel construction processes and 2D drawings have been well documented (Davies and Harty, 2013; Eastman *et al.*, 1974; van Berlo and Natrop, 2015). Typically, drawings are created from BIM and once this occurs BIM ceases to be updated, trusted and used. In this paper we have analyzed the unique Celsius case; the construction of an office and laboratory building that embraced the Total BIM approach, with many successful outcomes. High-end BIM use may have placed additional demands on designers and the CM company. However, contrary to common conceptions that small firms might be excluded from high-end BIM projects (Dainty *et al.*, 2017), Celsius has shown that the project structure was actually more inclusive towards them.

By applying the holistic research framework to BIM implementation, strong interdependences between factors relating to the BIM approach in Celsius have been identified in the categories of ecosystem, strategy and innovation, organizing and technology. By taking an “all-in” approach to BIM we found that the CM company embraced BIM in its totality – Total BIM, and achieved several key success factors. These success factors and strength of the approach come from combining all factors together in a single project and are also contingent on the alignment between them. By adopting Total BIM more leverage can be extracted from each factor, than if they were each implemented individually. This paper therefore contributes to the body of knowledge of BIM implementation and strategy work connected to the Total BIM approach.

Crucial to the success of the project, four main success factors have been identified:

- (1) BIM as the contractual and legally binding construction document.
- (2) High-quality, production-oriented, cloud-based BIM used throughout the project.
- (3) Powerful mobile BIM-viewer software that enabled site workers to create the construction information they needed themselves, to perform work on-site.
- (4) Strong leadership and management from the CM company responsible for implementing the Total BIM approach.

This research discusses a unique case where BIM is the primary source of information in all project stages, where a holistic approach is applied that eliminates the production of traditional 2D drawings and associated parallel processes. Information is presented in the most efficient format for construction workers. An all-inclusive BIM approach was used in the project that addressed many commonly found issues in construction projects. A limitation of this study was that only a single project was analyzed. Future research could help our understanding of the Total BIM approach by analyzing similar cases of where BIM is the single source of information and implemented throughout all project stages. The new digital work methods create opportunities to collect and analyze more data regarding the whole construction process, which is something that could also be explored further.

## References

- Azhar, S. (2011), “Building information modeling (BIM): trends, benefits, risks, and challenges for the AEC industry”, *Leadership and Management in Engineering*, Vol. 11 No. 3, pp. 241-252, doi: [10.1061/\(ASCE\)LM.1943-5630.0000127](https://doi.org/10.1061/(ASCE)LM.1943-5630.0000127).

- 
- Bosch-Sijtsema, P.M., Tjell, J., Roupe, M., Johansson, M. and Viklund Tallgren, M. (2016), "Ett Pilotprojekt För Forskning Och Kunskapsutveckling [A pilot project for research and knowledge development]", available at: [https://www.cmb-chalmers.se/wp-content/uploads/2015/10/BIM\\_Management\\_med\\_referenser\\_final.pdf](https://www.cmb-chalmers.se/wp-content/uploads/2015/10/BIM_Management_med_referenser_final.pdf) (accessed 15 August 2022).
- Brohn, C. (2018), "Kalkyl via modell: Pilotprojekt [calculation via model: pilot project]", available at: <https://www.sbuf.se/Projektsida?project=6a07c38c-51fe-48e4-8783-6dd7548a7cf7> (accessed 15 August 2022).
- Calderon-Hernandez, C. and Brioso, X. (2018), "Lean, BIM and augmented reality applied in the design and construction phase: a literature review", *International Journal of Innovation, Management and Technology*, Vol. 9 No. 1, pp. 60-63, doi: [10.18178/ijimt.2018.9.1.788](https://doi.org/10.18178/ijimt.2018.9.1.788).
- Cousins, S. (2017), "Total BIM: how Stockholm's £1bn urban transformation project is going 100% digital", *Construction Research and Innovation*, Vol. 8 No. 2, pp. 34-40, doi: [10.1080/20450249.2017.1334940](https://doi.org/10.1080/20450249.2017.1334940).
- Czmoch, I. and Pēkala, A. (2014), "Traditional design versus BIM based design", *Procedia Engineering*, Vol. 91, pp. 210-215, doi: [10.1016/j.proeng.2014.12.048](https://doi.org/10.1016/j.proeng.2014.12.048).
- Dainty, A., Leiringer, R., Fernie, S. and Harty, C. (2017), "BIM and the small construction firm: a critical perspective", *Building Research and Information*, Vol. 45 No. 6, pp. 696-709, doi: [10.1080/09613218.2017.1293940](https://doi.org/10.1080/09613218.2017.1293940).
- Davies, R. and Harty, C. (2013), "Implementing 'Site BIM': a case study of ICT innovation on a large hospital project", *Automation in Construction*, Vol. 30, pp. 15-24, doi: [10.1016/j.autcon.2012.11.024](https://doi.org/10.1016/j.autcon.2012.11.024).
- DiCicco-Bloom, B. and Crabtree, B.F. (2006), "The qualitative research interview", *Medical Education*, Vol. 40 No. 4, pp. 314-321, doi: [10.1111/j.1365-2929.2006.02418.x](https://doi.org/10.1111/j.1365-2929.2006.02418.x).
- Eadie, R., Browne, M., Odeyinka, H., McKeown, C. and McNiff, S. (2013), "BIM implementation throughout the UK construction project lifecycle: an analysis", *Automation in Construction*, Vol. 36, pp. 145-151, doi: [10.1016/j.autcon.2013.09.001](https://doi.org/10.1016/j.autcon.2013.09.001).
- Eastman, C., Fisher, D., Lafue, G., LividiniStoker, J.D. and Yessios, C. (1974), "An outline of the building description system", Research Rep, 50, available at: <https://files.eric.ed.gov/fulltext/ED113833.pdf> (accessed 15 August 2022).
- Englund, E. and Grönlund, M. (2018), "Current legal problems and risks with BIM in the Swedish AEC industry", available at: <https://www.diva-portal.org/smash/get/diva2:1229505/FULLTEXT02> (accessed 15 August 2022).
- Flyvbjerg, B. (2006), "Five misunderstandings about case-study research", *Qualitative Inquiry*, Vol. 12 No. 2, pp. 219-245, doi: [10.1177/1077800405284363](https://doi.org/10.1177/1077800405284363).
- Flyvbjerg, B., Holm, M.S. and Buhl, S. (2002), "Underestimating costs in public works projects: error or lie?", *Journal of the American Planning Association*, Vol. 68 No. 3, pp. 279-295, doi: [10.1080/01944360208976273](https://doi.org/10.1080/01944360208976273).
- Gaunt, M. (2017), "BIM model-based design delivery: tideway East, England, UK", *Proceedings of the Institution of Civil Engineers-Smart Infrastructure and Construction*, Vol. 170 No. 3, pp. 50-58, doi: [10.1680/jsmic.17.00011](https://doi.org/10.1680/jsmic.17.00011).
- Ghaffarianhoseini, A., Tookey, J., Ghaffarianhoseini, A., Naismith, N., Azhar, S., Efimova, O. and Raahemifar, K. (2017), "Building Information Modelling (BIM) uptake: clear benefits, understanding its implementation, risks and challenges", *Renewable and Sustainable Energy Reviews*, Vol. 75, pp. 1046-1053, doi: [10.1016/j.rser.2016.11.083](https://doi.org/10.1016/j.rser.2016.11.083).
- Johansson, M. and Roupé, M. (2019), "BIM and Virtual Reality (VR) at the construction site", *Proceedings of the 19th International Conference on Construction Applications of Virtual Reality*, Bangkok, Thailand, 2019, available at: [https://research.chalmers.se/publication/513799/file/513799\\_Fulltext.pdf](https://research.chalmers.se/publication/513799/file/513799_Fulltext.pdf) (accessed 15 August 2022).
- Koseoglu, O. and Nurtan-Gunes, E.T. (2018), "Mobile BIM implementation and lean interaction on construction site: a case study of a complex airport project", *Engineering, Construction and Architectural Management*, Vol. 25 No. 10, pp. 1298-1321, doi: [10.1108/ECAM-08-2017-0188](https://doi.org/10.1108/ECAM-08-2017-0188).

- 
- Lindström, M. (2021), "Avtalsjuridik för digitala modeller [Contract law for digital models]", available at: <https://www.sbuf.se/Projektsida?project=d5f638cf-eb1e-4e04-8420-0135712b3686> (accessed 15 August 2022).
- Merschbrock, C. and Rolfsen, C.N. (2016), "BIM technology acceptance among reinforcement workers the case of Oslo airport's terminal 2", *Journal of Information Technology in Construction*, Vol. 21, pp. 1-12, available at: <https://www.itcon.org/2016/1> (accessed 15 August 2022).
- Nohrstedt, L. (2017), "Slussen byggs utan ritningar [Slussen is built without drawings]", available at: <https://www.nyteknik.se/bygg/slussen-byggs-utan-ritningar-6840537> (accessed 15 August 2022).
- Ragab, M.A. and Marzouk, M. (2021), "BIM adoption in construction contracts: content analysis approach", *Journal of Construction Engineering and Management*, Vol. 147 No. 8, doi: [10.1061/\(ASCE\)CO.1943-7862.0002123](https://doi.org/10.1061/(ASCE)CO.1943-7862.0002123).
- Rybus, W. (2022), "Ranselva bridge: construction without drawings", available at: <https://e-brim.com/wp-content/uploads/e-BrIM-February-2022.pdf> (accessed 15 August 2022).
- Sacks, R., Eastman, C., Lee, G. and Teicholz, P. (2018), *BIM Handbook: A Guide to Building Information Modeling for Owners, Designers, Engineers, Contractors, and Facility Managers*, 3rd ed., John Wiley & Sons, New Jersey, ISBN: 9781119287568.
- Smith, H.B. and Hansen, G.A. (2016), "Construction of a hydropower plant with zero drawings – a success story from Norway", available at: <https://www.autodesk.com/autodesk-university/article/Construction-Hydropower-Plant-Zero-Drawings-Success-Story-Norway-2018> (accessed 15 August 2022).
- Succar, B. (2009), "Building information modelling framework: a research and delivery foundation for industry stakeholders", *Automation in Construction*, Vol. 18 No. 3, pp. 357-375, doi: [10.1016/j.autcon.2008.10.003](https://doi.org/10.1016/j.autcon.2008.10.003).
- Sundquist, V., Leto, A.D., Gustafsson, M., Johansson, M. and Roupe, M. (2020), "BIM in construction production: gains and hinders for firms, projects and industry", in Scott, L. and Neilson, C.J. (Eds), *Proceedings of the 36th Annual ARCOM Conference*, 7-8 September 2020, UK, Association of Researchers in Construction Management, Leeds Beckett University, Leeds, pp.505-514, available at: <https://arcom.ac.uk/-/docs/archive/2020-Indexed-Papers.pdf> (accessed 15 August 2022).
- Ulvestad, Ø. and Vieira, T. (2021), "Ranselva Bridge: planning and building a 634m long bridge solely based on BIM models", available at: <https://e-mosty.cz/wp-content/uploads/e-mosty-Sept21.pdf> (accessed 15 August 2022).
- van Berlo, L.A.H.M. and Natrop, M. (2015), "BIM on the construction site: providing hidden information on task specific drawings", *Journal of Information Technology in Construction*, Vol. 20, pp. 97-106, available at: <https://www.itcon.org/paper/2015/7> (accessed 15 August 2022).
- Volk, R., Stengel, J. and Schultmann, F. (2014), "Building Information Modeling (BIM) for existing buildings—literature review and future needs", *Automation in Construction*, Vol. 38, pp. 109-127, doi: [10.1016/j.autcon.2013.10.023](https://doi.org/10.1016/j.autcon.2013.10.023).
- Yin, R.K. (2009), *Case Study Research Design and Methods*, 4th ed., SAGE publications, Thousand Oaks, CA, ISBN: 9781412960991.
- Zaker, R. and Coloma, E. (2018), "Virtual reality-integrated workflow in BIM-enabled projects collaboration and design review: a case study", *Visualization in Engineering*, Vol. 6 No. 4, doi: [10.1186/s40327-018-0065-6](https://doi.org/10.1186/s40327-018-0065-6).

### Corresponding author

Oliver Disney can be contacted at: [oliver.disney@chalmers.se](mailto:oliver.disney@chalmers.se)

---

For instructions on how to order reprints of this article, please visit our website:

[www.emeraldgroupublishing.com/licensing/reprints.htm](http://www.emeraldgroupublishing.com/licensing/reprints.htm)

Or contact us for further details: [permissions@emeraldinsight.com](mailto:permissions@emeraldinsight.com)