



Active learning of driving scenario trajectories

Downloaded from: <https://research.chalmers.se>, 2026-04-05 01:37 UTC

Citation for the original published paper (version of record):

Jarl, S., Aronsson, L., Rahrovani, S. et al (2022). Active learning of driving scenario trajectories. *Engineering Applications of Artificial Intelligence*, 113.
<http://dx.doi.org/10.1016/j.engappai.2022.104972>

N.B. When citing this work, cite the original published paper.



Contents lists available at ScienceDirect

Engineering Applications of Artificial Intelligence

journal homepage: www.elsevier.com/locate/engappai

Active learning of driving scenario trajectories

Sanna Jarl^a, Linus Aronsson^a, Sadegh Rahrovani^b, Morteza Haghir Chehrehgani^{a,*}^a Department of Computer Science and Engineering, Chalmers University of Technology, Sweden^b Volvo Cars Corporation, Sweden

ARTICLE INFO

Keywords:

Active learning
Time series analysis
Latent space representation
Autonomous drive verification
Active safety

ABSTRACT

Annotated driving scenario trajectories are crucial for verification and validation of autonomous vehicles. However, annotation of such trajectories based only on explicit rules (i.e. knowledge-based methods) may be prone to errors, such as false positive/negative classification of scenarios that lie on the border of two scenario classes, missing unknown scenario classes, or even failing to detect anomalies. On the other hand, verification of labels by annotators is not cost-efficient. For this purpose, active learning (AL) could potentially improve the annotation procedure by including an annotator/expert in an efficient way. In this study, we develop a generic active learning framework to annotate driving trajectory time series data. We first compute an embedding of the trajectories into a latent space in order to extract the temporal nature of the data. Given such an embedding, the framework becomes task agnostic since active learning can be performed using any classification method and any query strategy, regardless of the structure of the original time series data. Furthermore, we utilize our active learning framework to discover unknown driving scenario trajectories. This will ensure that previously unknown trajectory types can be effectively detected and included in the labeled dataset. We evaluate our proposed framework in different settings on novel real-world datasets consisting of driving trajectories collected by Volvo Cars Corporation. We observe that active learning constitutes an effective tool for labeling driving trajectories as well as for detecting unknown classes. Expectedly, the quality of the embedding plays an important role in the success of the proposed framework.

1. Introduction

New business models and the digitalization of society has revolutionized the automotive sector, like many other industries. Self-driving vehicles are considered to be one of the new trends that is of high importance for the future of the automotive industry with many social and technological impacts. It, alongside the social aspects, could provide promising solutions to reduce accidents in traffic, ease gridlock issues and allow for more comfortable and productive commutes. In order to comfortably integrate Autonomous Drive (AD) in society, it must be safe and tested properly. One important part of ensuring this is collecting and annotating large amounts of driving scenarios, which can then be used for further verification and validation of autonomous drive functionality in virtual and real test environments.

The importance of obtaining a robust and high quality dataset of driving scenarios can be seen in several steps of AD testing and verification (Hoseini et al., 2021b). However, annotation of driving scenario trajectories could become costly and time-consuming. This is due to the annotation task being heavily dependent on human interaction, either to manually label traffic scenario trajectories or verifying the quality of the labels provided by humans. Furthermore, the data concerning autonomous vehicles comes in the form of time series data, containing

information about the motions of various road objects, such as cars and other types of vehicles. The complicated nature of this data could increase the risk that an automated annotation algorithm misses rare classes or miss-classifies fringe cases. These are some of the issues that need to be addressed in order to provide scenario catalog/database completeness and also in order to better understand the traffic/driving behavior.

In this paper, we investigate the effectiveness of active learning to annotate AD time series trajectory data. Active learning provides solutions for accurate and robust data labeling at a low cost (Cohn et al., 1996; Settles, 2009). In this paradigm, a small dataset is initially annotated. Then, only the most informative trajectories (data points) are queried to be labeled by an expert/human. One can consider active learning as a sequential decision making procedure wherein at every step, two operations are performed: (i) select the next trajectory to be labeled, and (ii) update the classification model using the newly labeled trajectory. Its concept is beyond data labeling and annotation; it is studied for example for decision making in troubleshooting as well (Chen et al., 2017).

Our contribution is multifold. First, we develop a generic active learning framework for time series data. As will be discussed in the

* Corresponding author.

E-mail address: morteza.chehrehgani@chalmers.se (M.H. Chehrehgani).

related work section, previous work on active learning for time series tasks is limited because it is specialized to specific types of sequential and temporal data, or assumes a specific classification method (Peng et al., 2017b; Liang et al., 2020; Gweon and Yu, 2021). Instead, we separate the modeling of temporal aspects of the data from active learning and classification. This enables us to apply a wide range of different active learning and classification paradigms. To achieve this, we first embed the time series into a latent space in order to extract the temporal and sequential nature of the data. In this work, we study different latent space representations including multivariate Time Series t-Distributed Stochastic Neighbor Embedding (mTSNE) (Nguyen et al., 2017; Van der Maaten and Hinton, 2008), Recurrent Auto-Encoder (RAE) (Demetriou et al., 2020) and Variational Recurrent Auto-Encoder (VRAE). To obtain the VRAE embedding, we adapt our developed framework for RAE in Demetriou et al. (2020) to the variational setting. Given such an embedding, any classification method and active learning query strategy can be used. In this work, we investigate Support Vector Machines (SVM) and Neural Networks (NN) in combination with the query strategies entropy, margin and random sampling.

Second, detecting unknown driving behavior is of high importance for autonomous vehicles. Therefore, we extend the active learning framework to unknown class detection, where the driving trajectories to be queried do not necessarily correspond to an a priori known trajectory type. We achieve this by initially querying known classes, such that the model uncertainty of future unknown classes becomes higher than for the known classes. A reasonable querying strategy should then query the unknown classes at a higher rate. The same embeddings, query strategies and classifiers used for trajectory classification are going to be investigated for this purpose as well.

Third, we investigate novel real-world datasets provided by Volvo Cars Corporation. The datasets consist of information about various driving scenario trajectories which can help advance research on AD.

Finally, we evaluate the performance of the framework (both of active classification and unknown class detection) on the previously mentioned datasets, with promising results.

This paper is an extension of our preliminary work presented in Jarl et al. (2021) wherein we briefly introduced the classification of time series trajectory data using active learning. In this work, we additionally, (i) elaborate further on the proposed framework and discuss its generality and different specifications, (ii) perform more investigations on factors that influence the performance of active learning, such as the choice of classifier, class distribution and the allocated budget, (iii) perform additional experimental studies for example on the rate of the improvements by different active learning strategies, and (iv) extend the active learning framework to detect unknown classes.

The rest of the paper is organized as follows. In Section 2, we review the related work on active learning. In Section 3, we describe the data and its preparation used in this study. In Section 4, we introduce the latent space representations and the embedding methods to be employed within the active learning framework. In Section 5, we describe the framework for active learning, including the classification models and the query strategies. In Section 6, we extend the framework to identify the trajectories with unknown class labels. In Section 7, we perform the experimental studies, and finally, in Section 8, we conclude the paper.

2. Related work

Active learning has been well studied in different contexts and domains, where most of the early work can be found in the survey of Settles (2009). It covers, among other methods, uncertainty based query strategies such as entropy and margin sampling, which are utilized in this work.

The study in Houlisby et al. (2011) uses predictive entropy with the Gaussian Process Classifier to yield a Bayesian active learning method called BALD. The method is then investigated for deep learning along

with some approximate methods based on drop-out (Gal et al., 2017; Kirsch et al., 2019). Bossér et al. (2021) have studied several model-centric and data-centric aspects of active learning with deep neural network models. They show that the margin query strategy yields higher performance compared to alternatives on MNIST and CIFAR-10 datasets, which is consistent with the study in Körner and Wrobel (2006). Johansson et al. (2021) investigates active learning with the margin query strategy for drug discovery in particular for reaction yield prediction in order to identify the successful reactions with a minimal experimental cost. Pimentel et al. (2020) studies anomaly detection using active learning.

Active learning can be performed in the form of querying class labels or querying pairwise relations. The former is more common (Cohn et al., 1996; Gal et al., 2017; Hanneke, 2007), and has been widely used in several applications such as robotics, text analysis, image classification, medicine, computer vision, manufacturing and log data analysis (Johansson et al., 2021; Tong, 2001; Yan et al., 2018; Peng et al., 2021, 2017b). Querying pairwise relations, on the other hand, has been mainly studied in the context of semi-supervised learning and interactive clustering (Ashtiani et al., 2016; Awasthi et al., 2017), where some works extend the clustering models on positive and negative edge weights such as correlation clustering and shifted min cut (Bansal et al., 2004; Haghiri Chehreghani, 2017) to (inter)active learning.

Active learning has also been studied for classification of temporal and sequential data. The work in Peng et al. (2017a) develops an informativeness measure for time series classification based on the nearest neighbor classification method, where (Peng et al., 2017b) adapts it for battery event detection. Similarly, the works in Liang et al. (2020), Gweon and Yu (2021) study active learning focused on the nearest neighbor paradigm in different settings such as model selection. The Transfer Active Learning (TAL) method (Kinyua and Jouandeau, 2021) combines active learning with transfer learning especially for deep learning. The work in van Leeuwen et al. (2021) considers the robustness and quality of assigned labels via a zoom-in step. The safe active learning work in Zimmer et al. (2018) models time series by a Gaussian process with a nonlinear exogenous input structure while taking some safety constraints into account. The work in Júnior et al. (2017) studies active learning for animals, vessels, and human movements trajectories, where the extracted features do not represent the full temporal nature of the data. We note that active learning has been used in other contexts than classification as well, for example sampling the time points over time series (Singh et al., 2005).

However, these methods suffer from several limitations such as tuning critical hyper parameters, being specialized to specific types of sequential and temporal data, or assuming a specific classification method (e.g., the nearest neighbor method). Unlike these task/method-specific methods, we develop a generic active learning framework for temporal data (time series) that can employ any active learning strategy (informativeness measure) and can be used with any classification method such as Support Vector Machines and Neural Networks. We achieve this by separating the modeling of temporal aspects of the data from active learning and classification.

3. Data

The datasets used in this work are provided by Volvo Cars Corporation (VCC). They are in time series format and contain information about objects surrounding the ego car. These objects correspond to other vehicles, which we refer to as target cars. We extract and use the lateral and longitudinal road positions of the surrounding vehicles in order to obtain three different kinds of trajectories, namely *target car left drive by*, *target car right drive by* and *target car cut in*. For simplicity, we drop the word 'target' from the scenario names and call them *left drive by*, *right drive by* and *cut in*. Note that the framework we adopt in this study is generic and different types of scenarios could be added for a similar analysis. However, in this work we are particularly interested

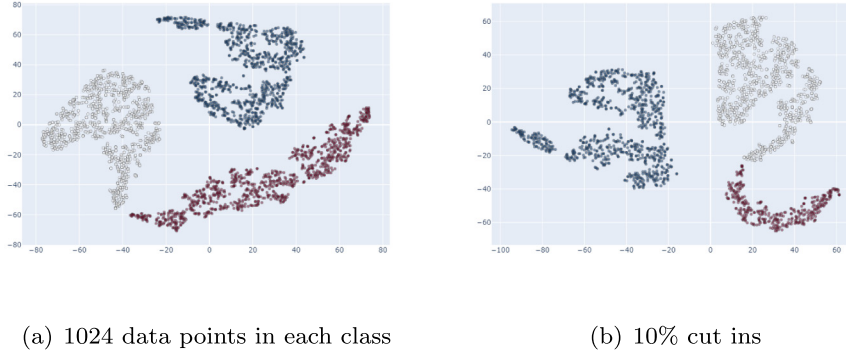


Fig. 1. The latent space representation generated by mTSNE, with (a) 1024 points in each class and (b) 10% cut ins. The colors red, white and blue correspond to the cut in, right drive by and left drive by classes, respectively.

Table 1

The number of data points in the three datasets used in this work, with α being the percentage of cut ins.

Data set	Annotated set	Unlabeled set	Test set
$\alpha = 33$	10	2211	615
$\alpha = 10$	10	1769	492
$\alpha = 5$	10	1563	435

in AD functionality for congested traffic on the highway. Therefore, the previously mentioned trajectory types are of high importance for the test and release of the AD functionality in our case.

We begin by splitting each of the datasets into three parts: a initially annotated set, a unlabeled set and a test set. These sets can then be used to perform active learning experiments, as explained in Section 5. Then, some of the cut ins are removed to achieve the desired class distribution. The next step is to transform the time series trajectories into a latent space, wherein the temporal aspects are taken into account. After such an embedding, we sometimes call a trajectory a data point, as it is then represented by a vector. The number of data points (trajectories) in each set for every class distribution can be seen in Table 1, where α is the percentage of cut ins. Each set contains an equal number of left and right drive by data points. Finally, it should be mentioned that our datasets were already manually labeled by VCC through expert domain knowledge. These ground truth labels allow us to easily evaluate our active learning framework.

4. Latent space representation for active learning

As mentioned, the first step is to model the temporal and sequential order of the trajectories. For this purpose, we embed the trajectories and obtain a data point in a latent space for each trajectory. In this section, we describe the different trajectory embedding methods we investigate in this paper.

4.1. mTSNE with Dynamic Time Warping

One way to embed the trajectories into a latent space, is to use mTSNE together with Dynamic Time Warping (DTW) (Van der Maaten and Hinton, 2008; Hoseini et al., 2021a). It first computes the pairwise distances between trajectories using Dynamic Time Warping, and then applies a combination of stochastic neighbor embedding and t-distributed neighbor embedding. To obtain the distance between two trajectories, DTW matches the indices in these time series with some restrictions on the alignment. For example one index in a shorter trajectory might correspond to several indices in a longer trajectory. This is repeated for all pairs of trajectories in order to obtain the matrix of pairwise distances between trajectories (shown by \mathbf{D}).

High dimensional pairwise distances \mathbf{D}_{ij} are then converted into probabilities of pairwise similarities using an exponential conditional distribution. The conditional probability

$$p_{j|i} = \frac{\exp(-\mathbf{D}_{ij}^2/2\sigma_i^2)}{\sum_{k \neq i} \exp(-\mathbf{D}_{ik}^2/2\sigma_i^2)} \quad (1)$$

is used to imply the probability the i th trajectory (data point) would pick the j th trajectory as its neighbor if both were drawn in proportion to their probability density under a Gaussian distribution centered around the i th one. For the low dimensional embedded data points \mathbf{x}_i and \mathbf{x}_j the low dimensional conditional probability $q_{j|i}$ can be computed in a similar way as shown in Eq. (2).

$$q_{j|i} = \frac{\exp(-\|\mathbf{x}_i - \mathbf{x}_j\|^2/2\sigma_i^2)}{\sum_{k \neq i} \exp(-\|\mathbf{x}_i - \mathbf{x}_k\|^2/2\sigma_i^2)}, \quad (2)$$

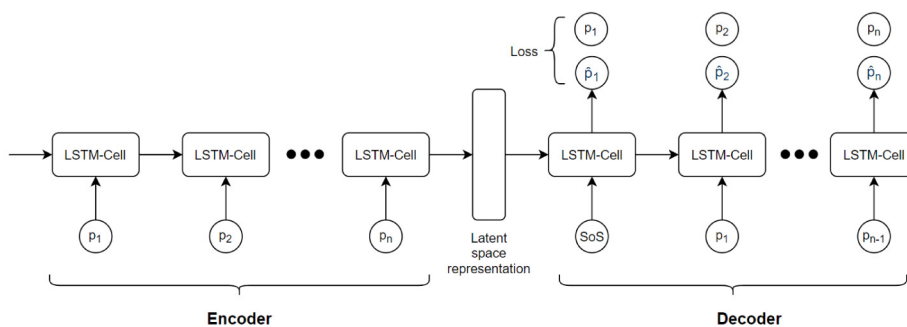
If the low dimensional data points $\{\mathbf{x}_i\}$ correctly model the high dimensional distances between trajectories, $p_{j|i}$ and $q_{j|i}$ will be close to each other. Stochastic neighborhood embedding (SNE) aims to find a low dimensional representation (in the form of a vector \mathbf{x}_i for every i th trajectory) that minimizes the difference between $p_{j|i}$ and $q_{j|i}$.

To demonstrate how mTSNE obtains embeddings for our datasets, in Fig. 1, we illustrate the latent space representation generated by mTSNE, with (a) 1024 data points in each class, and (b) 10% cut ins. The colors red, white and blue respectively correspond to the cut in, right drive by and left drive by classes. Here we set the perplexity to 37.5, and we see that SNE separates the classes well in two dimensions.

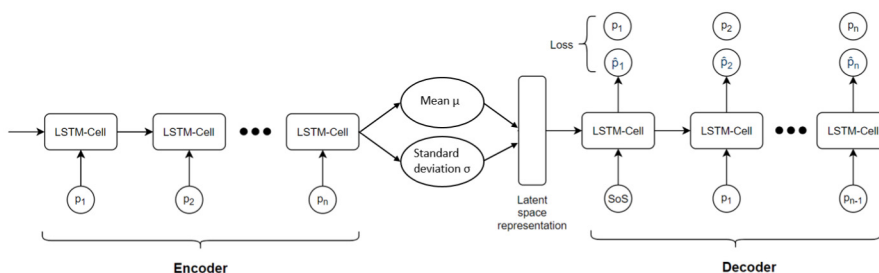
4.2. RAE and VRAE embeddings

An alternative approach to produce the latent space representation is using a combination of Recurrent Neural Networks (to extract the temporal aspects of the trajectories) with (Variational) Auto-Encoders (to yield a latent space representation — an embedding). We investigate such a representation in two settings: (i) Recurrent Auto-Encoder (RAE), and (ii) Variational Recurrent Auto-Encoder (VRAE).

The schematic structure of RAE is shown in Fig. 2(a) adapted from the model we have developed in Demetriou et al. (2020) for trajectory generation. Fig. 2(b) shows the general structure of VRAE, that includes an additional layer mapping each trajectory (data point) to a distribution in the latent space. The Auto-Encoder has two stacked LSTM cells and 64 features in the hidden state as well as in the latent space. To verify the performance of the autoencoder, we have performed a small study with 8, 32, 64 and 128 features in latent space. As seen in Fig. 3, 64 features yield the most stable and accurate results. In Fig. 2, the variables p_1, \dots, p_n represent a sequence of feature vectors that correspond to a driving trajectory, which is input to the autoencoder. In order to address the variable-length problem with the trajectories in our datasets, we group together the trajectories of a certain length to



(a) RAE



(b) VRAE

Fig. 2. The general structure of (a) the Recurrent Auto-Encoder (RAE) and (b) the Variational Recurrent Auto-Encoder (VRAE) we use for embeddings.

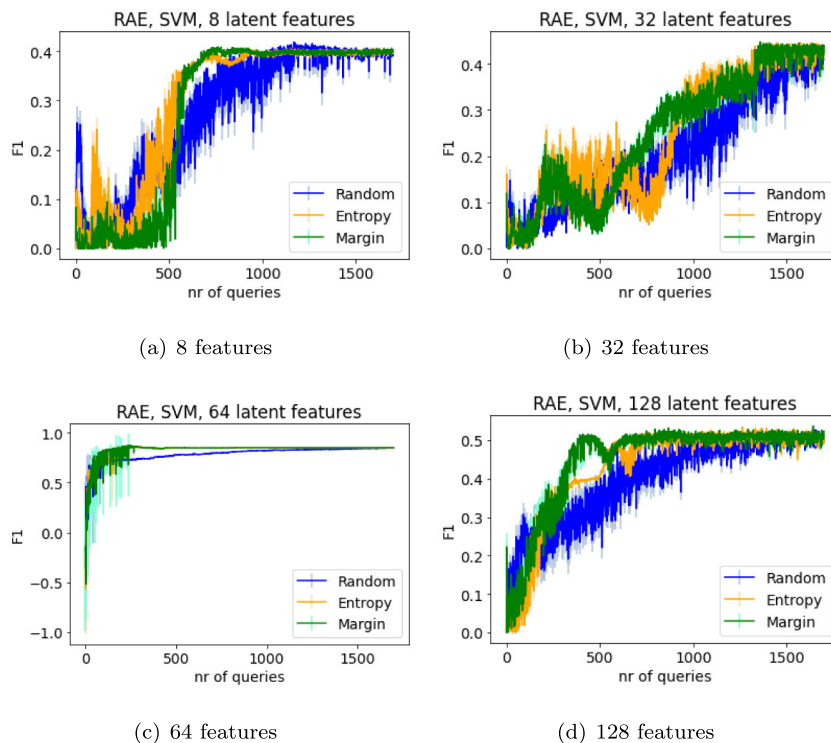


Fig. 3. A comparison of different dimensions of RAE. 64 latent features yields the highest and most stable F1 score.

form a batch, which is then fed as input to the network. In this fashion, all trajectories within a batch have the same length.

VRAE ensures a coherent latent space, which implies the data points in close proximity will be located close to each other even in the latent space. VRAE encodes the data points as distributions rather than explicit points, then a new sample is drawn from these distributions as input to the decoder.

5. The active learning paradigm

The goal of active learning is to label the most informative data points with a minimal number of human interactions. In our framework, the active learning procedure uses the latent representation of the time series data as input. To perform active learning, we follow Algorithm 1, which begins by training the classification model on

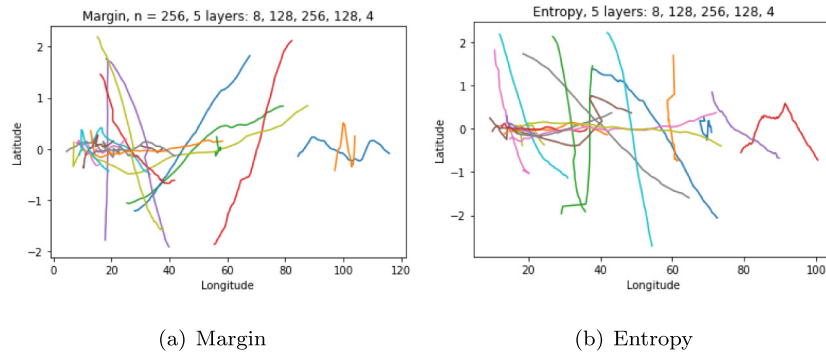


Fig. 4. A subset of queried trajectories using (a) margin and (b) entropy query strategies.

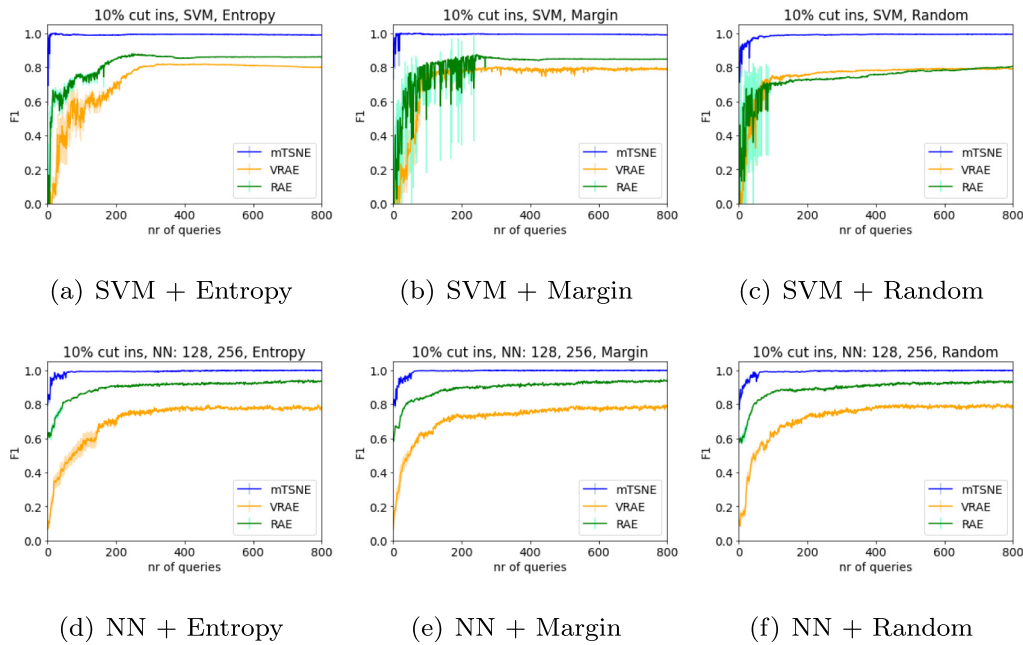


Fig. 5. Comparing the performance of mTSNE, RAE and VRAE in different settings.

a small annotated dataset. Next, we classify the unlabeled data and calculate the informativeness of each data point according to the chosen query strategy. The most informative data point is then queried to be annotated by an expert and is subsequently moved to the annotated set. After every query, the classifier is retrained. This iterative procedure continues until the allocated budget is spent.

Algorithm 1: Active Learning

Result: Labels a number of data points and classifies the rest.
 Train the classifier on a small amount of initially labeled data;
while *budget* > 0 **do**

Classify the unlabeled data points;
 Calculate informativeness for each unlabeled data point;
 Query the most informative data point(s) to an expert;
 Add queried data point(s) to the annotated data set and
 remove them from the unlabeled set;
 Retrain the classifier using the (new) annotated set;

end

5.1. Classification models

In this study, we examine two classification models, SVM and fully connected neural network (NN). For SVM, the radial basis function is used as the kernel. For the parameters c and γ we use the values

suggested by Scikit-Learn. Performing cross-validation by inspection, these parameter values provided good enough results. The NN consists of two hidden layers with respectively 128 and 256 neurons. VRAE seems to require a larger capacity. Thus, we use a larger NN with that, consisting of 5 hidden layers with 64, 128, 256, 128 and 64 neurons. Each layer is batch normed and ReLU is used as the non-linear activation function. To optimize, we use the Adam optimizer applied to the respective cross entropy loss.

5.2. Query strategies

We investigate the three commonly-used query strategies *random*, *margin* and *entropy*. As discussed in Boss er et al. (2021), they represent different aspects of active learning for neural networks. Let U denote the unlabeled set. Random assigns a uniformly distributed informativeness to each data point in U ,

$$I_i^R \sim \text{unif}(0, 1). \quad (3)$$

The second strategy, called margin, computes the informativeness for every unlabeled data point $\mathbf{x}_i \in U$ as

$$I_i^M = -[P_C(\hat{y} = \tilde{c}_1 | \mathbf{x}_i) - P_C(\hat{y} = \tilde{c}_2 | \mathbf{x}_i)], \quad (4)$$

where \mathbf{x}_i is the latent space representation of the data point, C represents a classifier, \hat{y} is a random variable that corresponds to the

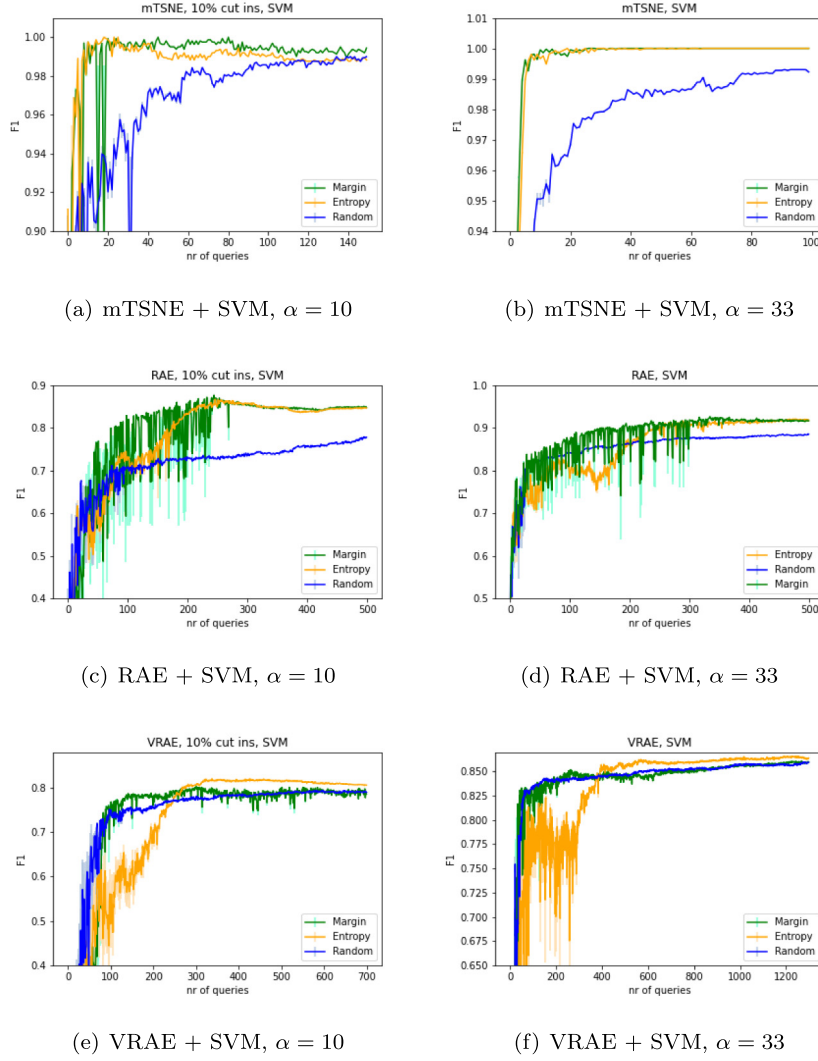


Fig. 6. The F1 score for the three query strategies using datasets with $\alpha = 33, 10$. We illustrate the results for each embedding, mTSNE (a)–(b), RAE (c)–(d) and VRAE (e)–(f).

predicted label by the classifier, P_C is the probability of $\hat{y} = \tilde{c}_j$ given \mathbf{x}_i (here $j = 1, 2$), \tilde{c}_1 and \tilde{c}_2 are respectively the most probable and the second most probable classes for \mathbf{x}_i to belong to predicted by classifier C. The data point with the smallest margin is then queried.

The third query strategy is entropy, which assigns the informativeness based on the entropy of the predictive distribution:

$$I_i^E = - \sum_{\tilde{c}_j} P_C(\hat{y} = \tilde{c}_j | \mathbf{x}_i) \log(P_C(\hat{y} = \tilde{c}_j | \mathbf{x}_i)). \quad (5)$$

We note that here the summation is w.r.t. all class labels $\{\tilde{c}_j\}$. The entropy can be viewed as the total amount of information in the entire distribution. The data point with the highest I_i^E is queried.

6. Discovering unknown classes

In this section, we extend the proposed framework to employ active learning for finding unknown classes. To do so, we assume that the classification model (SVM or NN) is only trained based on two classes, whereas there might exist more classes in the set of unlabeled data which belong to an unknown class. Then, the goal is to identify such data points with unknown class labels. This can potentially be used for anomaly detection as well.

For this purpose, we hypothesize that when performing active learning, after a sufficient number of data points is queried from the existing (known) classes, then a reasonable querying strategy might query

mainly from the unknown classes. The reason is that the classification model then becomes confident about the existing classes and yields the highest uncertainty for the data points with unknown class labels.

Here, we treat the cut in class as the unknown class, where the classification models use only the data points labeled as left and right drive by. Thus, the entire model including the embeddings (e.g., the Auto-Encoders) are trained on only left and right drive by data points. We use the number of queried cut ins w.r.t. the total number of queried data points a measure of performance.

To justify our idea of using active learning for unknown class detection, here we carry out a preliminary study to investigate what type of trajectories the active learning method tends to query. Fig. 4 shows a subset of queried trajectories using the margin (Fig. 4(a)) and entropy (Fig. 4(b)) strategies (note that in our datasets, the velocity is relative to the ego vehicle). With both query strategies we observe that several double cut ins and decelerative cut ins are queried, which are rare forms of cut in trajectories. This discovery indicates the potential for active learning to be used for the purpose of finding unknown classes or even anomalies of a certain class.

7. Experimental studies

In this section, we investigate the different components of the proposed framework for active learning of the AD trajectories: embedding, query strategy, classifier and class distribution. The embeddings used

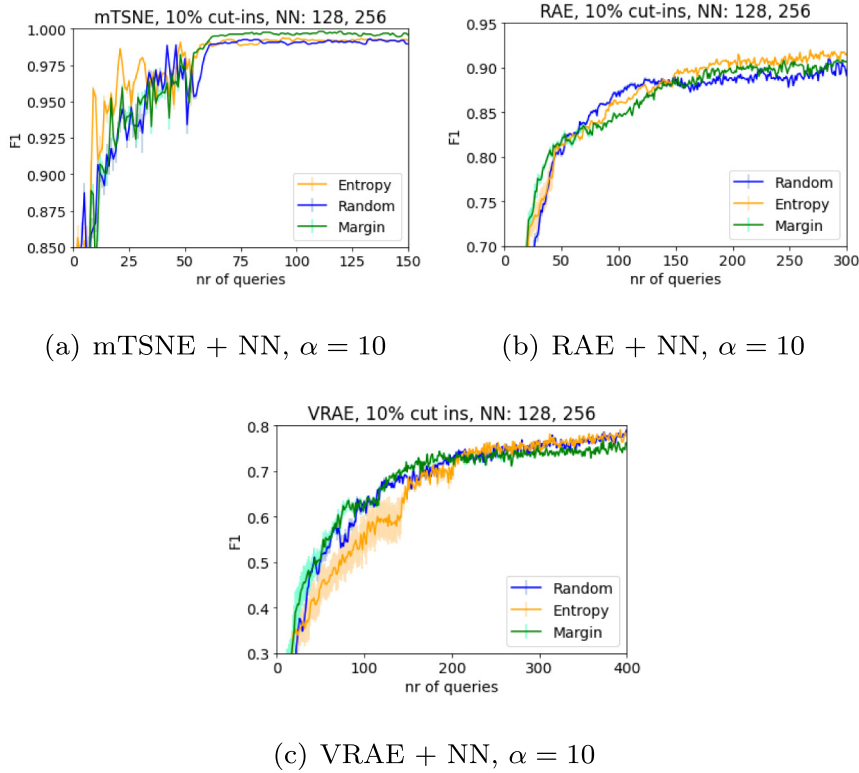


Fig. 7. The F1 score using NN classifier.

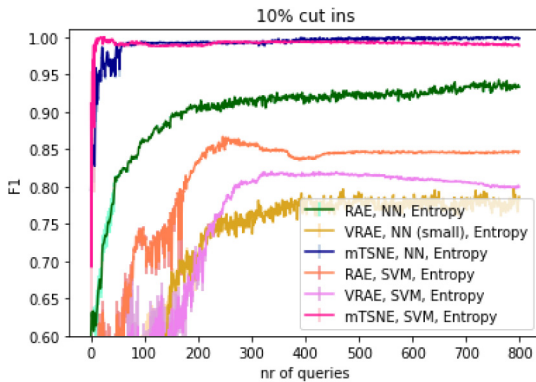


Fig. 8. Comparing the F1 score using SVM and NN for each embedding.

are mTSNE, RAE and VRAE combined with the SVM or NN classification models. We consider three query strategies, random, margin and entropy. The class distributions studied are balanced classes, 10% and 5% cut ins. In order to validate the results, all experiments are averaged over 10 runs and the faded colored lines represent the variance. We use the F1 score as the evaluation metric, since it is suitable for data with imbalanced classes. The F1 score is the harmonic mean between precision and recall, and is one of the most commonly used metrics. Unknown class detection is performed using the dataset with 10% cut ins, regarding the cut in class as the unknown class.

7.1. Investigation of embeddings for active learning

Fig. 5 shows the results when using different embeddings with SVM (first row) and NN (second row) as the classification model. We observe that mTSNE achieves the highest F1 score. RAE also performs well in particular with NN. The VRAE embedding yields less promising

results. The reason for why mTSNE outperforms the other embeddings is probably that its latent space is highly separable (as shown for example in Fig. 1), which makes the classification task easy.

The reason why VRAE performs worse could be explained simply by the nature of VRAE. Each trajectory is mapped to a distribution in the latent space with a larger error margin. This means that the margins between the classes are blurred and these points are a mixture of the two bordering classes. Such points might not give more information compared to a randomly drawn point and hence it becomes difficult to classify. Margin queries data points that have a high likelihood to belong to two different classes, and entropy queries those with the highest uncertainty of belonging to the most certain class. This would indicate that both margin and entropy query the data points that likely fall between the classes.

7.2. Investigation of query strategies

In this section, we study and compare the different query strategies. Fig. 6 illustrates the three query strategies for different embeddings using the SVM classifier. In Figs. 6(a) and 6(b), margin and entropy outperform random achieving a high F1 score much faster, for the datasets with $\alpha = 10, 33$.

Figs. 6(c) and 6(d) show the result for RAE embedded data. A similar behavior to mTSNE is observed, where using SVM the non-random query strategies (entropy and margin) yield better performance for both class distributions. In particular, entropy obtains a stable and high F1 score in this setting. A general trend observed for the mTSNE and RAE embedded data is that SVM in combination with margin query tends to yield larger fluctuations, but with a stable baseline. This behavior is especially visible in Fig. 6(c), where margin fluctuates more than entropy. A possible reason could be that margin, as the name indicates, queries the data points with the smallest margin. This means that SVM is more sensitive w.r.t. the new data points queried by margin, as the separating hyperplane can change its direction rapidly with new data points.

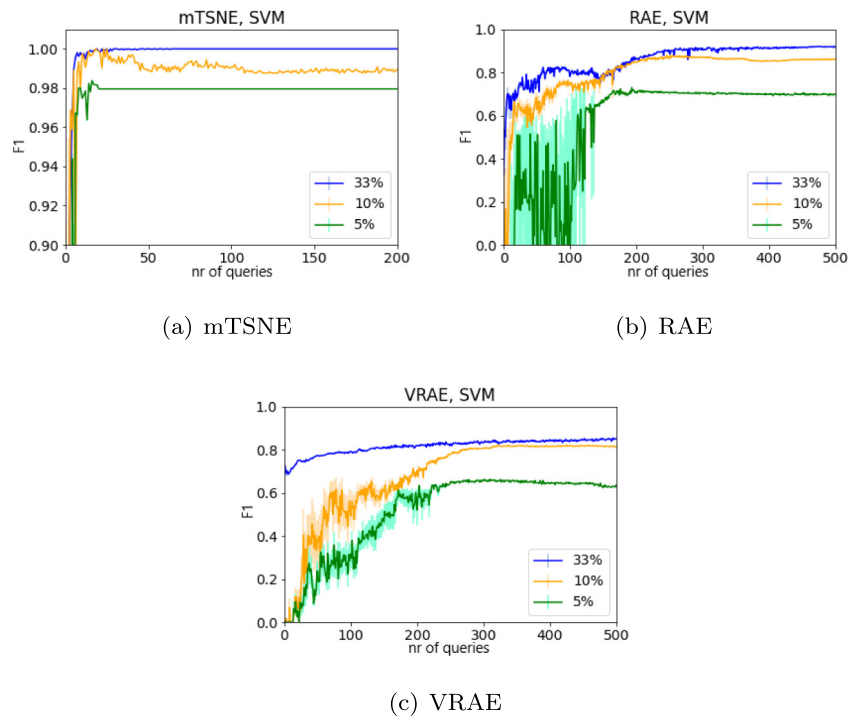


Fig. 9. Comparing the performance of class distributions containing 33%, 10% and 5% cut ins. SVM is used with (a) mTSNE, (b) RAE and (c) VRAE embeddings.

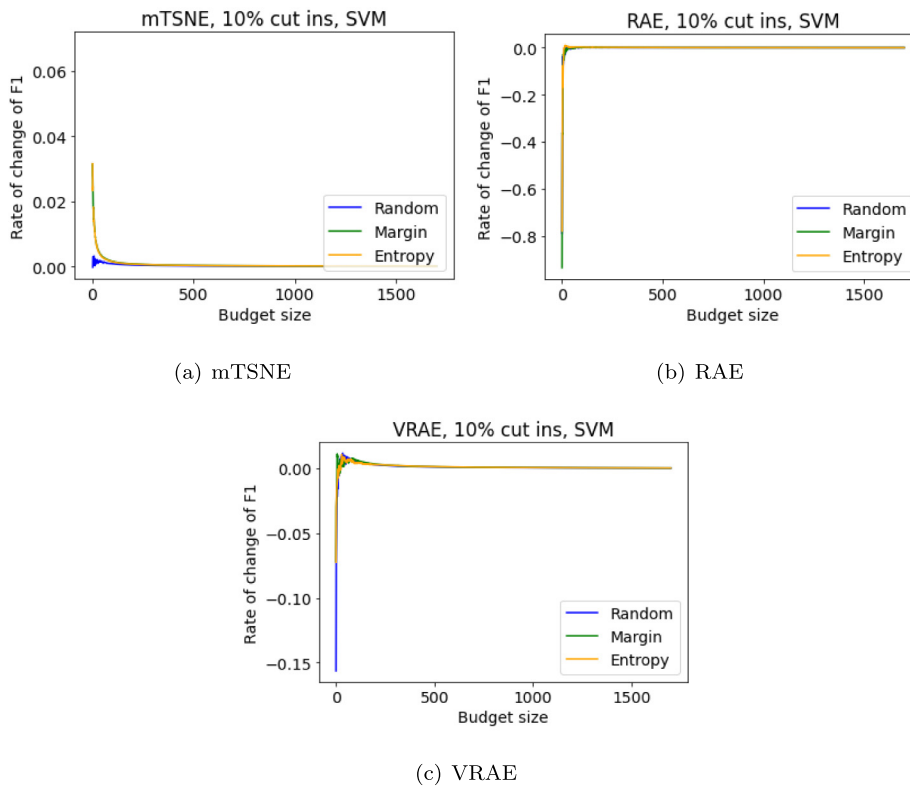


Fig. 10. The rate of change of F1 score for each embedding using the SVM classifier.

Looking at Fig. 6(e), it is clear that entropy does not perform well when using VRAE. We also observe that there is no big difference between margin and random. However, this embedding yields in overall lower performance compared to mTSNE and RAE. As mentioned before, in this case the queried data points probably come from the boundary space between the classes, and do not provide more information than a randomly queried data point.

7.3. Investigation of choice of classifiers

In this study, we investigate the choice of classification model for active learning in our datasets. It has been observed that active learning is more effective in combination with SVM for all embeddings. This trend can be seen when comparing Fig. 7 (which uses NN) to Fig. 6 (which uses SVM), where there is no significant difference in

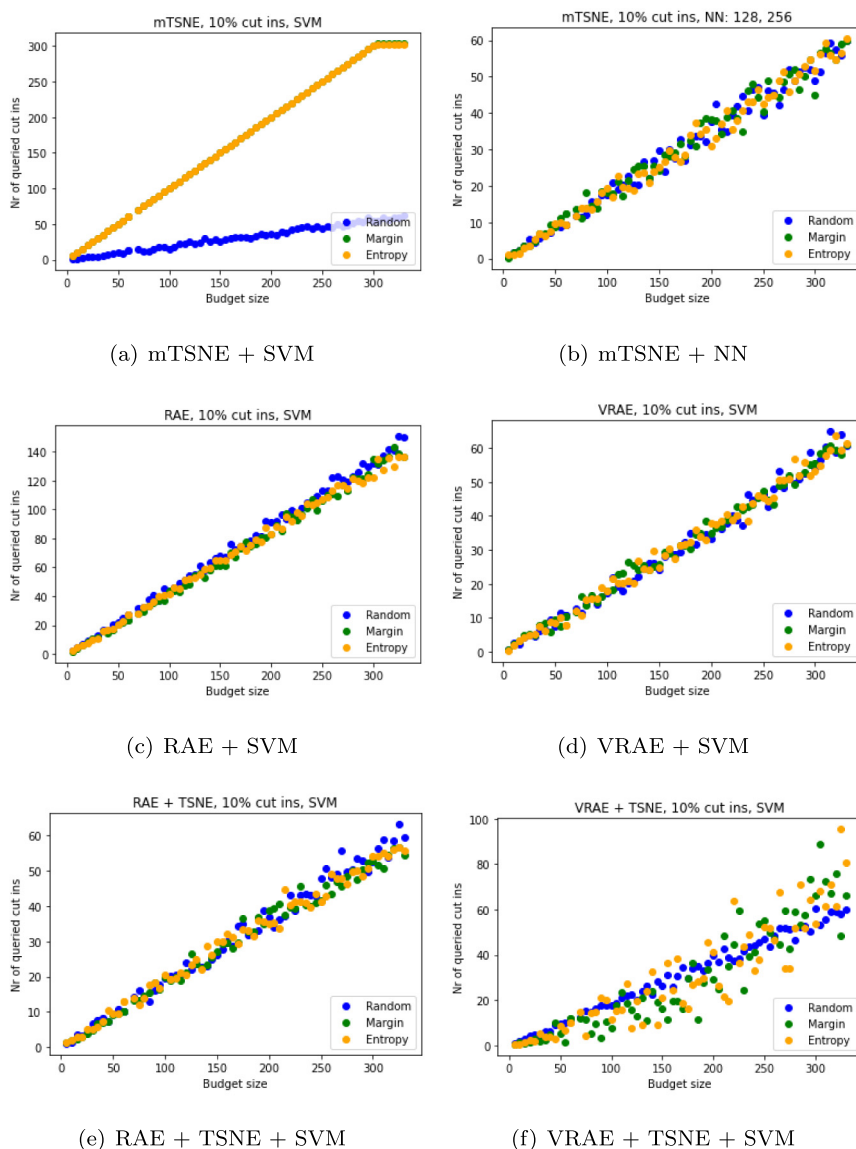


Fig. 11. Number of cut ins queried against budget size during 330 queries.

performance among the query strategies when we use an NN. For RAE, NN gives a higher F1 score than SVM, but for mTSNE and VRAE using SVM yields better performance compared to NN, as seen in Fig. 8. However, SVM tends to show larger fluctuations than NN, because of higher sensitivity to newly queried data points.

The observation that the entropy and margin query strategies do not perform better in the case of using an NN, indicates the benefits from active learning do not contribute to the improved performance. This observation is consistent with the study in Johansson et al. (2021) on active learning for chemical reaction prediction. This behavior seems to be due to the fact that an SVM can recognize general patterns fast, while an NN needs longer time to learn (due to its larger capacity). On the other hand, an NN is capable of learning more complex patterns and features.

Since the VRAE embedding yields overall worse results than the other embeddings, a larger NN consisting of five hidden layers with 64, 128, 256, 128 and 64 neurons is tested. Despite the increased capacity, the performance does not improve. There are several factors that could contribute to the stagnation at 0.8, such as the nature of VRAE and model configurations. In general one can conclude that a simpler model like SVM is sufficient and suitable to be used in combination with active learning for our datasets.

7.4. Investigation of class distributions

In Fig. 9, we investigate different class distributions with 33%, 10% and 5% cut ins, and report the F1 scores for the three embeddings (we use SVM as the classifier). For all embeddings the class distribution with $\alpha = 33$ seems to give the best results, as it saturates the fastest and obtains the highest F1 score. The dataset with $\alpha = 33$ only performs slightly better than the one with $\alpha = 10$ for mTSNE and RAE, while the difference is much larger for the VRAE embedding. Having $\alpha = 5$ yields poor performance in all cases, since the cut in class is under represented.

Even though having an equal number of data points from each class might be expected to yield a better performance by large margins, it is still not a trivial matter. A higher percentage of cut ins leads to a larger variation as well, since cut ins can come in several forms difficult to recognize, such as double cut ins and decelerative cut ins.

7.5. Investigation of budget size

Fig. 9(a) demonstrates that with mTSNE, a high F1 score ≈ 1 can be achieved within 25 queries for the different considered values of α . With RAE and the SVM classifier, for $\alpha = 33$, 10 an F1 score of above

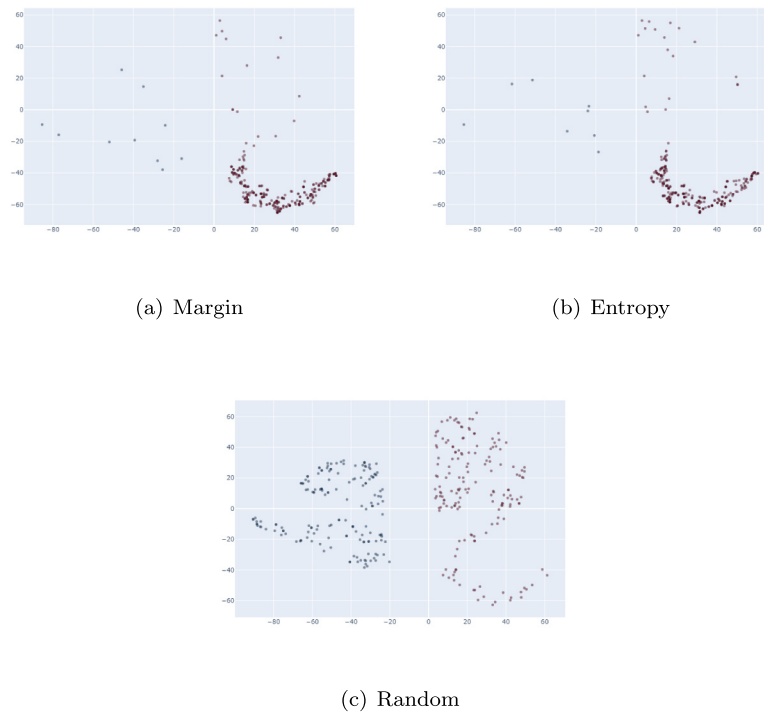


Fig. 12. The queried trajectories in mTSNE latent space after 330 queries, with (a) margin, (b) entropy and (c) random using SVM.

0.8 is achieved after approximately 225 queries, and for $\alpha = 5$ an F1 score of around 0.7 is achieved after 200 queries; see Fig. 9(b). Note that SVM is not the optimal choice of classifier for RAE. Looking at Fig. 7(b), only around 125 queries is required to obtain an F1 score above 0.9 with RAE for $\alpha = 10$. Fig. 9(c) shows that with VRAE, the F1 score plateaus around 0.8 and 0.6 after around 250 queries for $\alpha = 10, 5$ respectively. For $\alpha = 33$, the saturation at 0.8 occurs within 25 queries.

Another way of looking at the optimal budget size is to investigate the rate of change of the F1 score shown in Fig. 10. Consistent with the other results, we observe that mTSNE with SVM is an optimal choice of set up. The rate of change of F1 score reaches its plateau with the smallest budget size and minimal fluctuations. On the other hand, it is the set up that exhibits a meaningful behavior in the sense that the informativeness rate decreases as more data points are queried.

7.6. Investigation of unknown class detection

Finally, we investigate unknown class detection using the proposed active learning framework, where the cut in class is considered as the unknown class. Fig. 11 shows the number of queried cut ins for each embedding over 330 queries, using SVM or NN as the classification models. Figs. 11(a) and 11(b) show the results for the mTSNE embedded data. The results with SVM are more impressive compared to NN (therefore, for the two other embeddings we focus only on SVM). In Fig. 12, we illustrate the queried points displayed in mTSNE latent space. We observe that the entropy and margin strategies query more cut ins using SVM. With the NN classifier, the entropy and margin strategies perform almost as good as the random choice. The reason could be, as mentioned earlier, SVM is a simpler classification model which learns and saturates faster compared to NN (which is a model with a large capacity). Thus, SVM quickly learns the two existing classes (left and right drive by) and then starts querying the unknown class members. On the other hand, NN needs a lot of data for a proper learning and continuously needs data points from left and right drive by classes.

Figs. 11(c) and 11(d) show the unknown class detection results for RAE and VRAE embeddings employed with SVM. Figs. 11(e) and

11(f) show the results for RAE and VRAE embedded with TSNE using SVM, which could improve the results further compared to RAE and VRAE without TSNE. We observe that in both settings the entropy or margin querying strategies can be helpful for identifying the cut ins. This is even more obvious when using the VRAE combined with TSNE embedding.

8. Conclusion

In this study, we investigated the performance of active learning as an effective tool for reliable and cost-efficient labeling of the time series trajectory data collected from Autonomous Drive (AD) application. For this purpose, we developed a framework wherein we first embed the trajectories into a latent space representation (for example using mTSNE, RAE and VRAE) in order to extract the temporal nature of the trajectories. We then apply the active learning paradigms using different querying strategies and classification models in the embedded latent space. We also explored the possibilities for unknown class detection using the proposed active learning framework.

We observe that in many settings, active learning constitutes an effective tool. The positive effect is particularly more obvious with the SVM classifier, for both mTSNE and RAE embeddings. The class distribution yielding the best performance is when $\alpha = 33$, that is only slightly better than $\alpha = 10$. The choice of a proper embedding affects significantly the results. In particular, mTSNE yields consistently the best performance compared to the alternatives. With mTSNE, the entropy querying strategy used with SVM can be seen as the best option due to high performance with a small number of queries, and a higher stability than margin.

RAE still performs well in particular compared to VRAE. With the RAE embedding, using an NN yields better performance than SVM, with no explicitly significant difference in performance among the query strategies. The VRAE embedding does not achieve a particularly high performance regardless of the choice of the classifier. There is no significant difference between random and margin, but entropy performs somewhat worse in this setting.

Regarding unknown class detection, we observe that the proposed active learning framework can be useful for this task as well. In particular, when we use SVM with mTSNE embedding, we see that the entropy or margin query strategies yield identifying more cut ins compared to the random strategy. Due to large capacity, this is less obvious with NN.

Declaration of competing interest

The authors declare that they have no known competing financial interests or personal relationships that could have appeared to influence the work reported in this paper.

Acknowledgments

We would like to acknowledge Volvo Cars Corporation for providing the data and computational resources. The work of Linus Aronsson and Morteza Haghir Chehrehghani was partially supported by the Wallenberg AI, Autonomous Systems and Software Program (WASP) funded by the Knut and Alice Wallenberg Foundation, Sweden.

References

- Ashtiani, H., Kushagra, S., Ben-David, S., 2016. Clustering with same-cluster queries. In: *Advances in Neural Information Processing Systems*. NIPS, pp. 3216–3224.
- Awasthi, P., Balcan, M.F., Voevodski, K., 2017. Local algorithms for interactive clustering. *J. Mach. Learn. Res.* 18 (3), 1–35.
- Bansal, N., Blum, A., Chawla, S., 2004. Correlation clustering. *Mach. Learn.* 56 (1–3), 89–113.
- Bossér, J.D., Sörstadius, E., Haghir Chehrehghani, M., 2021. Model-centric and data-centric aspects of active learning for deep neural networks. In: *2021 IEEE International Conference on Big Data*. IEEE BigData, pp. 5053–5062.
- Chen, Y., Renders, J., Haghir Chehrehghani, M., Krause, A., 2017. Efficient online learning for optimizing value of information: Theory and application to interactive troubleshooting. In: *Thirty-Third Conference on Uncertainty in Artificial Intelligence*. UAI.
- Cohn, D.A., Ghahramani, Z., Jordan, M.I., 1996. Active learning with statistical models. *J. Artificial Intelligence Res.* 4, 129–145.
- Demetriou, A., Alfvåg, H., Rahrovani, S., Haghir Chehrehghani, M., A deep learning framework for generation and analysis of driving scenario trajectories, *CoRR* abs/2007.14524.
- Gal, Y., Islam, R., Ghahramani, Z., 2017. Deep bayesian active learning with image data. In: *Proceedings of the 34th International Conference on Machine Learning*. ICML.
- Gweon, H., Yu, H., 2021. A nearest neighbor-based active learning method and its application to time series classification. *Pattern Recognit. Lett.* 146, 230–236.
- Haghir Chehrehghani, M., 2017. Clustering by shift. In: *IEEE International Conference on Data Mining*. ICDM, pp. 793–798.
- Hanneke, S., 2007. A bound on the label complexity of agnostic active learning. In: *Proceedings of the Twenty-Fourth International Conference on Machine Learning*. ICML, pp. 353–360.
- Hoseini, F.S., Rahrovani, S., Haghir Chehrehghani, M., 2021a. A generic framework for clustering vehicle motion trajectories. In: *IEEE 24th International Conference on Intelligent Transportation Systems*. ITSC.
- Hoseini, F.S., Rahrovani, S., Haghir Chehrehghani, M., 2021b. Vehicle motion trajectories clustering via embedding transitive relations. In: *24th IEEE International Intelligent Transportation Systems Conference*. ITSC, IEEE, pp. 1314–1321.
- Houlsby, N., Huszar, F., Ghahramani, Z., Lengyel, M., Jarl, S., Wennerblom, J., Svedlund, M., Rahrovani, S., Haghir Chehrehghani, M., 2021. Annotation of traffic scenarios for autonomous drive verification using active learning. In: *6th International Symposium on Future Active Safety Technology Toward Zero Traffic Accidents*. FAST-zero.
- Johansson, S.V., Svensson, H.G., Bjerrum, E., Schliep, A., Haghir Chehrehghani, M., Tyrchan, C., Engkvist, O., Using active learning to develop machine learning models for reaction yield prediction, *ChemRxiv*, 10.33774/chemrxiv-2021-bpv0c.
- Júnior, A.S., Renso, C., Matwin, S., 2017. Analytic: An active learning system for trajectory classification. *IEEE Comput. Graph. Appl.* 37 (5), 28–39.
- Kinyua, P., Jouandeau, N., 2021. Sample-label view transfer active learning for time series classification. In: Farkaš, I., Masulli, P., Otte, S., Wermter, S. (Eds.), *Artificial Neural Networks and Machine Learning – ICANN*. Springer International Publishing, pp. 600–611.
- Kirsch, A., van Amersfoort, J., Gal, Y., 2019. Batchald: Efficient and diverse batch acquisition for deep bayesian active learning. In: *Advances in Neural Information Processing Systems 32: Annual Conference on Neural Information Processing Systems*. NeurIPS, pp. 7024–7035.
- Körner, C., Wrobel, S., 2006. Multi-class ensemble-based active learning. In: Fürnkranz, J., Scheffer, T., Spiliopoulou, M. (Eds.), *Machine Learning: ECML 2006*. Springer Berlin Heidelberg, pp. 687–694.
- Liang, S., Zhang, Y., Ma, J., 2020. Active model selection for positive unlabeled time series classification. In: *36th IEEE International Conference on Data Engineering*. ICDE, pp. 361–372.
- Nguyen, M., Purushotham, S., To, H., Shahabi, C., m-tsne: A framework for visualizing high-dimensional multivariate time series, *CoRR* abs/1708.07942.
- Peng, F., Luo, Q., Ni, L.M., 2017a. ACTS: an active learning method for time series classification. In: *33rd IEEE International Conference on Data Engineering*. ICDE, IEEE Computer Society, pp. 175–178.
- Peng, F., Wang, C., Liu, J., Yang, Z., 2021. Active learning for lane detection: A knowledge distillation approach. In: *Proceedings of the IEEE/CVF International Conference on Computer Vision*. ICCV, pp. 15152–15161.
- Peng, F., Zhou, X., Liu, H., Tan, H., Luo, Q., Hu, J., 2017b. A time series classification method for battery event detection. In: *23rd IEEE International Conference on Parallel and Distributed Systems*. ICPADS, pp. 17–24.
- Pimentel, T., Monteiro, M., Veloso, A., Ziviani, N., 2020. Deep active learning for anomaly detection. In: *2020 International Joint Conference on Neural Networks*. IJCNN, IEEE, pp. 1–8.
- Settles, B., 2009. *Active Learning Literature Survey*. Computer Sciences Technical Report 1648, University of Wisconsin–Madison.
- Singh, R., Palmer, N.P., Gifford, D.K., Berger, B., Bar-Joseph, Z., 2005. Active learning for sampling in time-series experiments with application to gene expression analysis. In: *Proceedings of the Twenty-Second International Conference on Machine Learning*. ICML, pp. 832–839.
- Tong, S., 2001. *Active Learning: Theory and Applications*. Stanford University.
- Van der Maaten, L., Hinton, G., 2008. Visualizing data using t-sne. *J. Mach. Learn. Res.* 9 (11).
- van Leeuwen, F., Bosma, B., van den Born, A., Postma, E., 2021. Rtl: A robust time series labeling algorithm. In: *Advances in Intelligent Data Analysis XIX*. pp. 414–425.
- Yan, S., Chaudhuri, K., Javidi, T., 2018. Active learning with logged data. In: *35th International Conference on Machine Learning*. ICML.
- Zimmer, C., Meister, M., Nguyen-Tuong, D., 2018. Safe active learning for time-series modeling with gaussian processes. In: *Advances in Neural Information Processing Systems*. NeurIPS.