



Analysis of Early Science observations with the CHaracterising ExOPlanets Satellite (CHEOPS) using pycheops

Downloaded from: <https://research.chalmers.se>, 2026-04-05 03:18 UTC

Citation for the original published paper (version of record):

Maxted, P., Ehrenreich, D., Wilson, T. et al (2022). Analysis of Early Science observations with the CHaracterising ExOPlanets Satellite (CHEOPS) using pycheops. *Monthly Notices of the Royal Astronomical Society*, 514(1): 77-104.
<http://dx.doi.org/10.1093/mnras/stab3371>

N.B. When citing this work, cite the original published paper.

Analysis of Early Science observations with the CHaracterising ExOPlanets Satellite (*CHEOPS*) using PYCHEOPS

P. F. L. Maxted¹,^{*} D. Ehrenreich,² T. G. Wilson³, Y. Alibert,⁴ A. Collier Cameron³, S. Hoyer⁵, S. G. Sousa⁶, G. Olofsson,⁷ A. Bekkelien,² A. Deline,² L. Delrez^{8,9}, A. Bonfanti,¹⁰ L. Borsato¹¹, R. Alonso,^{12,13} G. Anglada Escudé^{14,15}, D. Barrado,¹⁶ S. C. C. Barros,^{6,17} W. Baumjohann¹⁰, M. Beck,² T. Beck,⁴ W. Benz,^{4,18} N. Billot,² F. Biondi,^{11,19} X. Bonfils,²⁰ A. Brandeker,⁷ C. Broeg,^{4,18} T. B arczy,²¹ J. Cabrera,²² S. Charnoz,²³ C. Corral Van Damme,²⁴ Sz. Csizmadia²², M. B. Davies,²⁵ M. Deleuil,⁵ O. D. S. Demangeon,^{6,17} B.-O. Demory,¹⁸ A. Erikson,²² H. G. Flor en,⁷ A. Fortier,^{4,18} L. Fossati,¹⁰ M. Fridlund^{26,27}, D. Futyan,² D. Gandolfi²⁸, M. Gillon,⁸ M. Guedel,²⁹ P. Guterman,^{5,30} K. Heng,^{18,31} K. G. Isaak,³² L. Kiss,³³ J. Laskar,³⁴ A. Lecavelier des Etangs,³⁵ M. Lendl², C. Lovis,² D. Magrin,¹¹ V. Nascimbeni,¹¹ R. Ottensamer,³⁶ I. Pagano,³⁷ E. Pall e,^{12,13} G. Peter,³⁸ G. Piotto,^{11,39} D. Pollacco,³¹ F. J. Pozuelos,^{8,9} D. Queloz,^{2,40} R. Ragazzoni,^{11,39} N. Rando,²⁴ H. Rauer,^{22,41,42} C. Reimers,³⁶ I. Ribas,^{14,15} S. Salmon,² N. C. Santos,^{6,17} G. Scandariato,³⁷ A. E. Simon,⁴ A. M. S. Smith,²² M. Steller,¹⁰ M. I. Swayne¹, Gy. M. Szab o,^{43,44} D. S egransan,² N. Thomas,⁴ S. Udry,² V. Van Grootel⁹ and N. A. Walton⁴⁵

Affiliations are listed at the end of the paper

Accepted 2021 November 16. Received 2021 November 1; in original form 2021 April 29

ABSTRACT

CHEOPS (CHaracterising ExOPlanet Satellite) is an ESA S-class mission that observes bright stars at high cadence from low-Earth orbit. The main aim of the mission is to characterize exoplanets that transit nearby stars using ultrahigh precision photometry. Here, we report the analysis of transits observed by *CHEOPS* during its Early Science observing programme for four well-known exoplanets: GJ 436 b, HD 106315 b, HD 97658 b, and GJ 1132 b. The analysis is done using PYCHEOPS, an open-source software package we have developed to easily and efficiently analyse *CHEOPS* light-curve data using state-of-the-art techniques that are fully described herein. We show that the precision of the transit parameters measured using *CHEOPS* is comparable to that from larger space telescopes such as *Spitzer* Space Telescope and *Kepler*. We use the updated planet parameters from our analysis to derive new constraints on the internal structure of these four exoplanets.

Key words: methods: data analysis – software: data analysis – planets and satellites: fundamental parameters.

1 INTRODUCTION

The CHaracterising ExOPlanet Satellite (*CHEOPS*) was selected as the first S-class mission in the European Space Agency (ESA) science programme and was successfully launched on 2019 December 18 (Benz et al. 2021). Nominal science operations started on 2020 April 18 after a period of in-orbit commissioning (Rando et al. 2020). *CHEOPS* is a follow-up mission that generates ultrahigh precision photometry for bright stars already known to host exoplanets (Benz, Ehrenreich & Isaak 2018). It has the flexibility to observe stars at specified times over a large fraction of the sky.¹ The observing time is split between the Guaranteed Time Observation (GTO) programme (72 per cent), the Guest Observers (GO) programme (18 per cent), and the Monitoring and Characterisation (M&C)

programme (10 per cent). The *CHEOPS* GTO programme includes observations to search for transits of planets detected in radial velocity surveys (Delrez et al. 2021), to provide precise radius measurements for known transiting exoplanets (Bonfanti et al. 2021; Leleu et al. 2021), to characterize exoplanet atmospheres from measurements of their eclipses (Lendl et al. 2020), to study the dynamics of exoplanet systems using transit time variations (TTVs; Borsato et al. 2021), to search for moons and rings in exoplanets systems (Akınsanmi et al. 2018), to measure the tidal deformation of planets (Akınsanmi et al. 2019), and some stellar science that is relevant to exoplanet studies, e.g. characterization of very low mass stars in eclipsing binary star systems (Swayne et al. 2021).

The *CoRoT* (Baglin et al. 2009) and *Kepler* (Borucki et al. 2010) surveys have provided valuable information on the Galactic exoplanet population based on intensive monitoring of small areas of the sky. However, most of the exoplanets identified from their transits by those surveys are too faint to allow for detailed characterization.

* E-mail: p.maxted@keele.ac.uk

¹ <https://www.cosmos.esa.int/web/cheops/the-cheops-sky>

The best-characterized exoplanets are typically those discovered by radial velocity surveys orbiting bright stars that were subsequently found to be transiting, e.g. HD 209458 b ($V = 7.8$), HD 189733 b ($V = 7.8$), GJ 436 b ($V = 10.2$), or 55 Cancri e ($V = 6.0$). Detailed characterization has also been possible for gas- and ice-giant planets transiting bright stars discovered by ground-based transit surveys such as WASP (Pollacco et al. 2006), HATNet (Bakos et al. 2007), KELT (Pepper, Stassun & Gaudi 2018), and MASCARA (Snellen et al. 2012). Surveys such as Mearth (Charbonneau et al. 2009) and SPECULOOS (Delrez et al. 2018) are able to discover Earth-sized planets by looking for transits around M-dwarf host stars. The *Kepler K2* mission surveyed a larger area of the sky around the ecliptic than the original mission and so increased the number of planets discovered orbiting bright stars with this instrument, e.g. HD 106315 (Barros et al. 2017; Crossfield et al. 2017; Rodriguez et al. 2017). NASA’s Transiting Exoplanet Survey Satellite (*TESS*; Ricker et al. 2014) is an all-sky survey with the aim to discover exoplanets orbiting stars bright enough for detailed characterization with NASA’s James Webb Space Telescope (*JWST*; Gardner et al. 2006). The focus of the *CHEOPS* mission is the characterization of a set of most promising objects for constraining planet formation and evolution theories, and to support spectroscopic studies of these planets’ atmospheres with *JWST*, *Ariel* (Tinetti et al. 2018), and instrumentation on 30-m class telescopes (Marconi et al. 2021). With its unique characteristics, *CHEOPS* is complementary to all other transit survey missions as it provides the agility and the photometric precision necessary to re-visit sufficiently interesting targets for which further measurements are deemed valuable. The *CHEOPS* mission is also providing valuable experience for the European space science community that is feeding into the development of the PLATO mission, an ESA M-class mission with the challenging goal to detect and characterize Earth-sized planets with orbital periods up to one year that transit bright stars (Rauer et al. 2014).

During the first 8 months of science operations, the *CHEOPS* guaranteed-time observing programme (GTO) scheduled and observed over 300 transits and eclipses of known transiting exoplanet and eclipsing binary star systems. Another 24 long-duration observations were obtained for 12 bright stars to search for transits due to exoplanets discovered by radial velocity surveys. In addition, over 600 observations with a duration of 1-3 orbits² each were obtained. These ‘filler’ observations ensure that *CHEOPS* continues to collect useful science observations during short intervals between time-critical observations of transits and eclipses. The filler programmes within the GTO are being used to study the variability of low-mass stars on short time-scales, and to search for remnants of planetary systems around hot subdwarf stars (Van Grootel et al. 2021).

These large data rates, the peculiarities of observing from a nadir-locked orbit with a rotating field of view, and the very high precision of the *CHEOPS* data require specialised software to enable efficient and accurate analysis of the light curves, and timely publication of the results. Very accurate models are needed to precisely match the features visible in these ultrahigh precision light curves. The software should be easy to run and efficient so that everyone on the science team members has the opportunity to contribute to the data analysis effort without requiring access to large computing resources or extensive training. These requirements led us to develop

²The duration of *CHEOPS* observations are measured in orbits of 98.725 min each.

the PYCHEOPS software package, building on previous work to test the power-2 limb-darkening law (Maxted 2018) and the development of the qpower2 algorithm (Maxted 2018).

The PYCHEOPS software package is described fully in Section 2 of this paper. The analysis of the *CHEOPS* light curves for four transiting exoplanets observed during the Early Science observing programme is described in Section 3. Section 4 describes the method we have used to place constraints on the internal structure of these planets. These results are discussed in Section 5 and conclusions are briefly given in Section 6.

2 THE PYCHEOPS SOFTWARE PACKAGE

2.1 Implementation and dependencies

PYCHEOPS is written in PYTHON version 3.7 and makes extensive use of the packages NUMPY (Harris et al. 2020) and SCIPY (Virtanen et al. 2020). MATPLOTLIB (Hunter 2007) is used for data visualization and plotting. Tabular data, celestial coordinates, and time-scales are handled using routines from the ASTROPY³ software package (The Astropy Collaboration 2018). The package LMFIT⁴ (Newville et al. 2020) is used for non-linear least-squares minimization and parameter handling. For Bayesian data analysis techniques, we use the affine-invariant Markov chain Monte Carlo ensemble sampler by Goodman & Weare (2010) implemented in EMCEE⁵ (Foreman-Mackey et al. 2013) to generate samples from the posterior probability distribution. Correlated noise is modelled using Gaussian process (GP) regression in the form of the *celerite* algorithm implemented in software package CELERITE⁶ (Foreman-Mackey et al. 2017; Foreman-Mackey 2018). We use run-time compilation with NUMBA⁷ (Lam, Pitrou & Seibert 2015) to reduce the execution time for a few key subroutines that are called frequently by EMCEE. Parameter correlation plots are generated using the PYTHON module CORNER⁸ (Foreman-Mackey 2016). *CHEOPS* data are archived at the Data & Analysis Center for Exoplanets (DACE) hosted by the University of Geneva. These data can be accessed directly from PYCHEOPS using the PYTHON-DACE-CLIENT PYTHON module available from the DACE website.⁹ This client handles access to both proprietary data for science team members and public data for general users.

We have successfully installed and tested PYCHEOPS on machines running macOS, Windows 10, and Linux operating systems.

2.2 Package structure

Almost all the functionality of PYCHEOPS is implemented as a single PYTHON module of the same name that contains the following sub-modules.

`core` – handles the software configuration, e.g. data locations and user options.

`constants` – contains fundamental constants and nominal values for selected solar and planetary quantities defined by IAU 2015 Resolution B3 (Mamajek et al. 2015). The Newtonian constant

³<https://www.astropy.org/>

⁴<https://lmfit.github.io/lmfit-py/>

⁵<https://github.com/dfm/emcee>

⁶<https://github.com/dfm/celerite2>

⁷<https://numba.pydata.org/>

⁸<https://corner.readthedocs.io>

⁹<https://dace.unige.ch>

is taken to be $G = 6.67408 \times 10^{-11} \text{ m}^3 \text{ kg}^{-1} \text{ s}^{-2}$ (2014 CODATA value). The radius of the Earth is defined to be $R_{\oplus} = 6371 \text{ km}$ so that the volume of a sphere with this radius equals the nominal volume of the Earth defined in IAU 2015 Resolution B3. Similarly, the radius of Jupiter is defined to be $R_{\text{jup}} = 69911 \text{ km}$.

`funcs` – provides functions related to orbits and eclipses of stars and planets in Keplerian orbits, e.g. the solution of Kepler’s equation (Markley 1995) and the time of mid-eclipse in an eccentric orbit using Lacy’s method (Lacy 1992). This sub-module also includes a function to calculate the mass and radius of a planet from the observed parameters of its transit, and to plot the planet in the mass–radius plane compared to various models and/or the parameters of other known exoplanets taken from TEPcat (Southworth 2011).

`instrument` – contains data specific to the *CHEOPS* instrument, e.g. the instrument response function.

`utils` – provides utility functions, e.g. formatting of values with errors for output and light-curve binning.

`ld` – provides the parameters of the power-2 limb darkening as a function of stellar effective temperature (T_{eff}), surface gravity ($\log g$), and metallicity ($[\text{Fe}/\text{H}]$). This sub-module also contains functions to convert between different parametrizations of the power-2 limb-darkening law. Data are included for the *CHEOPS*, *TESS*, *Kepler*, *NGTS*, and *CoRoT* passbands, as well as various filters within the SDSS and Johnson/Cousins photometric systems. The parameters are interpolated from tables generated from synthetic 3D-LTE spectra from the STAGGER-grid calculated by Magic et al. (2015). For stars outside the range covered by the STAGGER-grid we use the coefficients for a 4-parameter limb-darkening law provided by Claret (2019) for the *Gaia* *G* band, which gives a close approximation to the *CHEOPS* passband. The transformation from the coefficients a_1, \dots, a_4 from table 10 of Claret (2019) to the parameters h_1 and h_2 of the power-2 limb-darkening law was done using a least-squares fit to the intensity profile as a function of $r = \sqrt{1 - \mu^2}$ in the region $r < 0.99$.

`models` – provides models for photometric effects observed in transiting exoplanet and eclipsing binary star systems, e.g. transits, eclipses, ellipsoidal effect, etc., and a 2-body Keplerian radial velocity model. These models are provided in the form of LMFIT `Model` classes and so can be easily combined using arithmetic operators. Trends in the data correlated with parameters such as spacecraft roll angle, sky background level, telescope tube temperature, etc. can be modelled using the `FactorModel` class provided by this sub-module.

`DATASET` – provides the `Dataset` class that is used to download, inspect, and analyse a single eclipse or transit observation obtained with *CHEOPS*. The light-curve plots in this paper for observations consisting of a single visit were generated using this class.

`MULTIVISIT` – provides the `MultiVisit` class for the combined analysis of multiple `Dataset` objects. For the analysis of multiple transits it is possible to include parameters `ttv_01`, `ttv_02`, etc. in the model to allow for transit timing variations around a linear ephemeris. Similarly, the depths of the eclipses `L_01`, `L_02`, etc. can be included as free parameters in the analysis of visits obtained during different occultations. `MultiVisit` can be used for the analysis of a single visit. The light-curve plots in this paper for observations composed of multiple visits were generated using this class.

`STARPROPERTIES` – provides the `StarProperties` class for convenient handling of information about the target star. This class will automatically download and extract stellar atmospheric parameters for the target star from the SWEET-Cat catalogue (Santos et al. 2013; Sousa et al. 2018), if available.

`PLANETPROPERTIES` – provides the `PlanetProperties` class for convenient handling of information about planets orbiting the target star. This class will automatically download and extract the properties of the transiting planet from the TEPcat catalogue (Southworth 2011), if available.

In addition to these sub-modules, the package distribution includes a script `MAKE_XML_FILES` as an aid to planning and execution of observing requests, and the script `COMBINE` to calculate the weighted mean of values with error estimates accounting for possible systematic errors using the algorithm described in Appendix A.

Distribution of PYCHEOPS is done via the PYTHON package index website.¹⁰ Bug reports and software development are coordinated using GITHUB.¹¹ Several examples that demonstrate and test the capabilities of PYCHEOPS are included with the software distribution package in the form of Jupyter Notebooks.¹² These include an analysis of the *CHEOPS* data for 4 eclipses of the transiting hot Jupiter WASP-189 b first presented by Lendl et al. (2020) and a tutorial based on the observation of a single transit of KELT-11 b using the same data analysed by Benz et al. (2021). The ‘pycheops cookbook’ included in the distribution provides installation instructions and data analysis recipes.

2.3 Transit and eclipse models

Transit light curves are calculated using the `qpwr2` algorithm (Maxted & Gill 2019). This algorithm uses an analytic approximation to efficiently calculate the flux blocked by a spherical planet of radius R_p orbiting a spherical star of radius R_* with an intensity profile described by the power-2 limb-darkening law $I_{\lambda}(\mu) = 1 - c(1 - \mu^{\alpha})$, where μ is the cosine of the angle between the surface normal and the line of sight. The algorithm is accurate to about 100 ppm for broad-band optical light curves of systems with a star–planet radius ratio $k = R_p/R_* = 0.1$. This is sufficient to recover transit parameters accurate to ± 0.5 per cent or better for planets with $k < 0.15$ (Maxted & Gill 2019).

The parameters of the transit model for a planet with orbital semimajor axis a and orbital inclination i are as follows.

$$\begin{aligned} T_0 &= \text{time of mid-transit} \\ P &= \text{orbital period in days} \\ b &= a \cos(i)/R_* \\ D &= (R_p/R_*)^2 = k^2 \\ W &= (R_*/a) \sqrt{(1+k)^2 - b^2}/\pi \\ f_c &= \sqrt{e} \cos(\omega) \\ f_s &= \sqrt{e} \sin(\omega) \\ h_1 &= I_{\lambda}(\frac{1}{2}) = 1 - c(1 - 2^{-\alpha}) \\ h_2 &= I_{\lambda}(\frac{1}{2}) - I_{\lambda}(0) = c2^{-\alpha}. \end{aligned}$$

For planets in circular orbits (eccentricity $e = 0$), the parameter W is the width of the transit in phase units and b is the transit impact parameter. D is the depth of the transit in the absence of limb darkening. The parameters f_c and f_s are used because they have a uniform prior probability distribution assuming that the eccentricity, e , and the longitude of periastron, ω , both have uniform prior probability distributions (Anderson et al. 2011; Eastman, Gaudi & Agol 2013). The parameters h_1 and h_2 are used because suitable priors can be applied to these parameters independently based on the results from Maxted (2018), at least for inactive solar-type stars –

¹⁰<https://pypi.org/project/pycheops/>

¹¹<https://github.com/pmaxted/pycheops>

¹²<https://jupyter.org/>

see also Short et al. (2019) for the correct calculation of the physical limits on these parameters.

The secondary eclipse model uses the same parametrization for the geometry of the star–planet system. The additional parameters for this model are the planet–star flux ratio, L , and the correction for the light traveltime across the orbit a_c . The eclipse models assumes that the flux distribution across the visible hemisphere of the planet is uniform.

For the sampling of the posterior probability distribution of the model parameters within `Dataset` and `MultiVisit` we assume that $\cos i$, $\log k$, and $\log a/R_\star$ have uniform prior probability distributions. The logarithm of the prior probability distribution for the parameters of the transit model is then

$$\log(P(D, W, b)) = \log(2kW) - \log(k) - \log(a/R_\star),$$

where the factor $2kW$ is the absolute value of the determinant of the Jacobian matrix $\mathbf{J} = d(D, W, b)/d(\cos i, k, a/R_\star)$ (Carter et al. 2008).

2.4 Parameter decorrelation

Trends in a data set due to instrumental noise are often correlated with parameters such as the instrument temperature, the position of the star on the detector, background count rate, etc. Removing these trends is known as *decorrelation* or *detrending* and the coefficient that relates the change in a parameter to the change in count rate is known as a *decorrelation parameter* or *detrending parameter*. Several decorrelation parameters are available for use within `PYCHEOPS`. These decorrelation parameters can be included as free parameters in the analysis of transits and eclipses so that the covariance between the parameters of interest (transit depth, eclipse depth, etc.) and these ‘nuisance parameters’ can be quantified. Of particular relevance to *CHEOPS* are trends in count rate, f , that depend on spacecraft roll-angle, ϕ . *CHEOPS* is nadir-locked, which results in the rotation of the stellar field around the line of sight once per orbit. Stray light from the Earth (an important background contamination in the images) is highly dependent on the roll angle. The decorrelation parameters available to model these trends are $df/d\sin(j\phi)$ and $df/d\cos(j\phi)$. Within the module `Dataset` the decorrelation can be done for these roll-angle decorrelation parameters up to the 2nd harmonic of the roll angle, i.e. $j = 1, 2$, or 3 . Within the module `MultiVisit` the decorrelation against roll angle is done implicitly, i.e. without explicit calculation of the decorrelation parameters, and there is no limit to the number of harmonics that can be used – see Section 2.9 for details.

Since sine and cosine functions have a range from -1 to $+1$, the magnitude of the decorrelation parameters $df/d\sin(j\phi)$ and $df/d\cos(j\phi)$ are approximately equal to the amplitude of the instrumental noise in the light curve due to correlations with each harmonic of ϕ . In a similar way, we shift and scale the variables used for decorrelation so that all the decorrelation parameters are approximately equal to the amplitude of the instrumental noise in the light curve that is correlated with the parameter. For example, decorrelation against the x position of the star on the detector due to the pointing jitter of the spacecraft uses the variable

$$\Delta x = \frac{x - (x_{\max} + x_{\min})/2}{(x_{\max} - x_{\min})/2},$$

where x_{\min} and x_{\max} are the minimum and maximum values of x , and similarly for Δy . The metadata provided with *CHEOPS* light curves includes estimates of the count rate in the photometric aperture due to three effects – the background level in the images, photoelectrons

from nearby stars accumulated during the CCD frame-transfer,¹³ and extra counts accumulated during the exposure due to contamination of the photometric aperture by nearby stars. These are all positive quantities so we scale them between their minimum and maximum values so that the decorrelation is done against the variables `bg`, `smear`, and `contam`, respectively, that range from 0 to 1.

Linear and quadratic trends with time, e.g. due to intrinsic stellar variability, can be accounted from using the decorrelation parameters `dfdt` and `d2fdt2`, respectively. The decorrelation is done against the variable $t - t_{\text{med}}$, where t_{med} is the median observation time of observations for the visit in days.

2.5 Internal reflections (glint)

Bright objects within 24° from the target can cause internal reflections that appear as small peaks in the light curve once per spacecraft rotation cycle. We refer to this phenomenon as ‘glint’. Glint due to moonlight does not occur at exactly the same spacecraft roll angle every cycle because of the motion of the Moon on the sky during the observation. The module `Dataset` includes a function `add_glint` that can be used to create a periodic cubic spline function to model this effect. The cubic spline is calculated using a least-squares fit to the residuals from the previous transit or eclipse fit to the light curve, or to the data either side of the transit or eclipse. The independent variable for this cubic spline is either the spacecraft roll angle, or the position angle of the Moon relative to the spacecraft roll angle on the sky. Once the glint function, $f_{\text{glint}}(t)$ has been created, the light-curve model will include a term `glint_scale` $\times f_{\text{glint}}(t)$. The factor `glint_scale` ≈ 1 can be included in the analysis as a free parameter so that the impact of the uncertainty in correcting for glint can be quantified. The function added to the model to correct for glint also accounts for much of the instrumental noise due to spacecraft roll angle, so this feature can also be used as an alternative to linear decorrelation against $\sin(\phi)$, $\cos(\phi)$, $\sin(2\phi)$, etc.

2.6 Ramp effect

Long-duration observations of bright stars with *CHEOPS* sometimes show changes in the count rate at the start of a visit with an amplitude up to a few hundred parts-per-million (ppm) that decays smoothly over several hours. This is an instrumental effect caused by changes in the instrument point spread function (PSF). The changes in the PSF are correlated with temperature changes recorded at various points on the telescope tube, particularly the value of `thermFront_2` provided in the metadata for each visit. Based on this correlation, the following equation has been developed to correct the measured flux (f_{measured}) for the ‘ramp’ effect:

$$f_{\text{corrected}} = f_{\text{measured}} \times (1 + \beta_r \times (\text{thermFront}_2 + 12^\circ\text{C})).$$

The value of the coefficient β_r varies from $\beta_r = 140 \text{ ppm } ^\circ\text{C}^{-1}$ to $\beta_r = 330 \text{ ppm } ^\circ\text{C}^{-1}$ for photometric aperture radii from 22.5 to 30 pixels, respectively. This ramp correction is not implemented by default in `PYCHEOPS`, but can be easily applied using the function `Dataset.correct_ramp`. This empirical approach to correcting the ramp effect is sufficient for most purposes, but investigations are continuing into more complex methods that may

¹³*CHEOPS* has no shutter so pixels remain exposed during the readout process. During the 25 ms of the frame transfer, each charge well collects light from each pixel crossed on its way to the storage area. This produces vertical ‘smear’ trails on the image from nearby stars.

provide a more accurate correction for this effect (Wilson et al., in preparation).

2.7 Model selection

2.7.1 Akaike and Bayesian information criteria

For a model with k free parameters and maximum likelihood for a fit to n observations, the Akaike and Bayesian information criteria have the following definitions:

$$\begin{aligned} \text{AIC} &= 2k - 2 \ln(\mathcal{L}); \\ \text{BIC} &= k \ln(n) - 2 \ln(\mathcal{L}). \end{aligned}$$

Models with a lower AIC and/or BIC have a better balance between the complexity of the model and the quality of the fit. For a least-squares fit to observations o_i with independent Gaussian standard errors, σ_i , the log-likelihood for a model that predicts values c_i is

$$\ln(\mathcal{L}) = -\frac{\chi^2}{2} - \frac{1}{2} \sum_{i=1}^n \ln(\sigma_i^2) - \frac{n}{2} \ln(2\pi), \quad (1)$$

where

$$\chi^2 = \sum_{i=1}^n \frac{(o_i - c_i)^2}{\sigma_i^2}.$$

The constant $-\frac{n}{2} \ln(2\pi)$ is sometimes dropped from this definition. This is the case for the values of the AIC and BIC returned by functions in LMFIT, but not for the log-likelihood values returned by CELERITE2. For consistency, and to enable like-for-like comparison, we overwrite the values of AIC and BIC returned by LMFIT with values calculated using equation (1) before the values are reported in the output from routines in Dataset and MultiVisit.

2.7.2 Bayes factors

The question of which decorrelation parameters to include in the analysis of a given light curve is a model selection problem. For nested models M_0 and M_1 with parameters $\theta_0 = \{p_1, p_2, \dots, p_n, 0\}$ and $\theta_1 = \{p_1, p_2, \dots, p_n, \psi\}$, given the data \mathcal{D} , the Bayes factor B_{01} is defined by

$$\frac{P(M_0 | \mathcal{D})}{P(M_1 | \mathcal{D})} = \frac{P(M_0) P(\mathcal{D} | M_0)}{P(M_1) P(\mathcal{D} | M_1)} = \frac{P(M_0)}{P(M_1)} B_{01},$$

where $P(\mathcal{D} | M_0) = \int P(\mathcal{D} | \theta_0) P(\theta_0) d^n \theta$ and similarly for $P(\mathcal{D} | M_1)$. $P(\theta_0)$ is the prior probability distribution for the parameters of model M_0 . The prior on the extra parameter ψ is the same for both models so we can use the Savage–Dickey density ratio (Dickey & Lientz 1970; Trotta 2007) to calculate the Bayes factor

$$B_{01} = \frac{P(\psi = 0 | \mathcal{D})}{P(\psi = 0)}.$$

For a parameter assumed to have a normal prior with standard deviation σ_0 , $P(\psi = 0) = 1/\sigma_0\sqrt{2\pi}$.

For the specific case where \mathcal{D} is a CHEOPS light curve, we find that the posterior probability distributions for the decorrelation parameters are usually well-behaved and close to Gaussian, as expected for a linear model. Assuming that they are normally distributed and that the standard deviation is given accurately by the error on the parameter given by LMFIT, and that *a priori* the two models are equally likely, we can calculate the Bayes factor for models with/without a parameter with value $p \pm \sigma_p$ using

$$B_p = e^{-(p/\sigma_p)^2/2} \sigma_0/\sigma_p.$$

These Bayes factors are listed in the output from the `lm_fit_report` method for Dataset objects. Parameters with Bayes factors ≈ 1 are not supported by the data and can be removed from the model. This statistic is only valid for comparison of the models with/without one parameter, so parameters should be added or removed one-by-one and the test repeated for every new pair of models.

2.8 Noise models

The standard error estimates provided with CHEOPS light curves account for the known sources of noise in the data, e.g. photon-counting statistics, detector read-out noise, errors in background subtraction, etc. There will be additional sources of noise that are not accounted for in these error estimates, e.g. undetected cosmic ray hits to the detector, variability of stars that contaminate the photometric aperture, thermal effects, scattered light, intrinsic variability of the target star, etc. The fitting routines in Dataset and MultiVisit include a parameter σ_w that accounts for this additional noise assuming that it is Gaussian white noise, i.e. a process that perturbs each measurement independently by some amount that has a normal distribution. The log-likelihood for the model using the same notation as above is then

$$\ln(\mathcal{L}) = -\frac{\chi^2}{2} - \frac{1}{2} \sum_{i=1}^n \ln(\sigma_i^2 + \sigma_w^2) - \frac{n}{2} \ln(2\pi),$$

where

$$\chi^2 = \sum_{i=1}^n \frac{(o_i - c_i)^2}{\sigma_i^2 + \sigma_w^2}.$$

The fitting routines in Dataset and MultiVisit can use a more sophisticated noise model that accounts for correlated noise assuming that this is described by a Gaussian process. The kernel that describes the correlations between observations obtained at times t_n and t_m is the SHOTerm kernel implemented in CELERITE2, i.e.

$$k_{\text{SHO}}(\tau; S_0, Q, \omega_0) = S_0 \omega_0 Q e^{-\frac{\omega_0 \tau}{2Q}} \times \begin{cases} \cosh(\eta \omega_0 \tau) + \frac{1}{2\eta Q} \sinh(\eta \omega_0 \tau), & 0 < Q < 1/2; \\ 2(1 + \omega_0 \tau), & Q = 1/2; \\ \cos(\eta \omega_0 \tau) + \frac{1}{2\eta Q} \sin(\eta \omega_0 \tau), & 1/2 < Q; \end{cases}$$

where $\eta = |1 - (4Q^2)^{-1}|^{1/2}$ and $\tau_{nm} = |t_n - t_m|$. This kernel represents a stochastically driven, damped harmonic oscillator, and is commonly used with $Q = 1/\sqrt{2}$ to model granulation noise in stars (Foreman-Mackey et al. 2017). The software package CELERITE2 is used to calculate the log-likelihood to observe a light curve for a given model and choice of the hyper-parameters Q , ω_0 and S_0 . The damping time-scale for this process is $\tau = 2Q/\omega_0$ and the standard deviation of the process is $\sigma_{\text{GP}} = \sqrt{S_0 \omega_0 Q}$. The Dataset module includes a function to plot the fast Fourier transform (FFT) of the residuals from the best-fitting transit or eclipse model in log–log space so that the user can look for a slope or peaks in the power spectrum due to stellar granulation or oscillations (Sulis et al. 2020).

2.9 Implicit correction for trends correlated with spacecraft roll angle

The field of view of the CHEOPS instrument rotates at an angular frequency $\Omega \approx 2\pi/98.725$ radians min^{-1} . This rotation introduces instrumental noise at this frequency and its harmonics. The CHEOPS point spread function (PSF) is approximately triangular in shape so to account for instrumental noise not removed by the data

reduction pipeline (DRP) we typically use a linear model of the form $\sum_{j=1}^3 \alpha_j \sin(j \cdot \Omega t) + \beta_j \cos(j \cdot \Omega t)$. Adding the 6 extra coefficients α_j, β_j as free parameters in the analysis of a single observing sequence ('visit') is not generally a problem, but this becomes inconvenient for the analysis of larger data sets because different coefficients are needed for each visit. Instead of explicitly including the nuisance parameters α_1, β_1, \dots in our analysis, we can marginalize over them using the trick described by Luger, Foreman-Mackey & Hogg (2017). This trick (*implicit decorrelation*) requires that we assume Gaussian priors on these nuisance parameters, in which case the likelihood to obtain the observed data \mathbf{y} from a mean model $\boldsymbol{\mu}(\boldsymbol{\theta})$ with parameters $\boldsymbol{\theta}$ is a multivariate normal distribution of the form

$$p(\mathbf{y}|\boldsymbol{\theta}) = \mathcal{N}(\mathbf{y}; \boldsymbol{\mu}, \mathbf{C} + \mathbf{A}\boldsymbol{\Lambda}\mathbf{A}^T), \quad (2)$$

where the columns of the matrix \mathbf{A} are the basis functions of our instrumental linear model, i.e. $\sin(\Omega t)$, $\cos(\Omega t)$, etc., and \mathbf{C} is the covariance matrix that describes the measurement errors on \mathbf{y} . If we assume independent Gaussian priors on the nuisance parameters all with the same standard deviation σ_Ω then $\boldsymbol{\Lambda} = \sigma_\Omega \mathbf{I}$. The term $\sigma_\Omega \mathbf{A}\mathbf{A}^T$ is of the form

$$\sum_{j=1}^{N_{\text{roll}}} a_j e^{-c_j \tau_{nm}} \cos(d_j \tau_{nm}) + b_j e^{-c_j \tau_{nm}} \sin(d_j \tau_{nm}),$$

where $\tau_{nm} = |t_n - t_m|$ for observations obtained at times t_n and t_m . This means we can easily calculate the likelihood $p(\mathbf{y}|\boldsymbol{\theta}, \boldsymbol{\alpha})$ using the CELERITE2 algorithm developed by Foreman-Mackey (2018). Some simple trigonometry is sufficient to show that $b_j = c_j = 0$ and $\boldsymbol{\alpha} = \{a_j = \sigma_\Omega, d_j = j\Omega, j = 1, 2, \dots, N_{\text{roll}}\}$. This instrumental noise model can be combined with both the white noise and the correlated noise models described in Section 2.8.

This implicit roll-angle decorrelation method is implemented in the sub-module `MultiVisit`. The number of harmonic terms N_{roll} can be selected with the keyword option `nroll`. *CHEOPS*' roll-angle rotation rate is not exactly constant, particularly for stars far from the celestial equator, so implicit decorrelation may not be as effective as explicit decorrelation using the parameters $df/d\sin\phi$, etc. This issue can be ignored if the trends with roll angle are weak, or mitigated by using a larger value of N_{roll} . A third option is to use the `unwrap` keyword option to remove the best-fitting roll-angle trend from each data set prior to analysis with `MultiVisit` using implicit roll-angle decorrelation. This is done by dividing the light-curve data from each visit by the values generated by the following function:

$$1 + \sum_j \sin(j\phi(t_i)) df/d\sin(j\phi) + \cos(j\phi(t_i)) df/d\cos(j\phi),$$

where $\phi(t_i)$ is the spacecraft roll angle at observation time t_i . The decorrelation parameters $df/d\sin(j\phi)$ and $df/d\cos(j\phi)$ are the best-fitting values taken from the last fit to the light curve. These best-fitting parameter values are stored together with other details of the fit when the data set is saved to an output file. For trends correlated with parameters other than roll angle, `MultiVisit` automatically selects the same decorrelation parameters that were used in the last fit to the light curve from each visit.

2.10 Analytical maximum-likelihood transit fit

A key part of the science case for the *CHEOPS* mission is to have a facility that can be used to search for transits of small exoplanets orbiting bright stars discovered in radial velocity surveys. The analysis of the long visits used to search for transits benefits

from a method to inject and recover synthetic transits in the light curve. Transit injection and recovery can also be used to characterize the noise in the light curve on different time scales. The method we have developed for this task, described below, is implemented in the `PYCHEOPS` function `scaled_transit_fit`.

We can use a factor s to modify the transit depth in a nominal model \mathbf{m}_0 calculated with approximately the correct depth that is scaled as follows:

$$\mathbf{m}(s) = 1 + s \times (\mathbf{m}_0 - 1).$$

The data are normalized fluxes $\mathbf{f} = f_1, \dots, f_N$ with nominal errors $\boldsymbol{\sigma} = \sigma_1, \dots, \sigma_N$. Assume that the actual standard errors are underestimated by some factor β , and that these are normally distributed and independent, so that the log-likelihood is

$$\ln \mathcal{L} = -\frac{1}{2b^2} \chi^2 - \frac{1}{2} \sum_{i=1}^N \ln \sigma_i^2 - N \ln \beta - \frac{N}{2} \ln(2\pi)$$

where

$$\chi^2 = \sum_i^N \frac{((f_i - 1) - s(m_{0,i} - 1))^2}{\sigma_i^2}.$$

The maximum likelihood occurs for parameter values s , and β such that $\frac{\partial \ln \mathcal{L}}{\partial s} \Big|_{s,\beta} = 0$ and $\frac{\partial \ln \mathcal{L}}{\partial \beta} \Big|_{s,\beta} = 0$, from which we obtain

$$s = \sum_{i=1}^N \frac{(f_i - 1)(m_{0,i} - 1)}{\sigma_i^2} \left[\sum_{i=1}^N \frac{(m_{0,i} - 1)^2}{\sigma_i^2} \right]^{-1},$$

and

$$\beta = \sqrt{\chi^2/N}.$$

For the standard errors on these parameters we use $\sigma_s^{-2} = -\frac{\partial^2 \ln \mathcal{L}}{\partial s^2} \Big|_{s,\beta}$ and $\sigma_\beta^{-2} = -\frac{\partial^2 \ln \mathcal{L}}{\partial \beta^2} \Big|_{s,\beta}$ to derive

$$\sigma_s = \beta \left[\sum_{i=1}^N \frac{(m_{0,i} - 1)^2}{\sigma_i^2} \right]^{-1/2}$$

and

$$\sigma_\beta = [3\chi^2/\beta^4 - N/\beta^2]^{-1/2}.$$

Whether or how much of the data outside transit to include depends on whether these data can be assumed to have the same noise characteristics as the data in transit. Note that including these data has no effect on s or σ_s , because of the factors $(m_{0,i} - 1)$ in their calculation, but will affect the estimates of β and σ_β .

If the noise scaling factor β is large ($\gtrsim 2$) then it may be more appropriate to assume that the nominal errors provided with the data are a lower bound to the true standard errors, e.g. if there is an additional noise source that is not well quantified such as poor cosmic ray rejection. We can assume that actual standard error on observation number k is σ_k with probability distribution

$$P(\sigma_k | \sigma_{0,k}) = \begin{cases} 0 & \sigma_k < \sigma_{0,k} \\ \frac{\sigma_{0,k}}{\sigma_k^2} & \sigma_k \geq \sigma_{0,k} \end{cases}.$$

This is a less informative prior on the standard error distribution than the 'error scaling' method and so the results tend to be more pessimistic. Assuming independent measurements and uniform priors, the posterior probability distribution is then

$$\ln \mathcal{L} = C + \sum_{k=1}^N \ln \left[\frac{1 - \exp(-R_k^2/2)}{R_k^2} \right],$$

where C is a normalizing constant and $R_k = (m_k - f_k)/\sigma_{0,k}$ (Sivia & Skilling 2006, section 8.3.1). This is a function of one parameter only so the minimum can be found efficiently using any suitable numerical algorithm. The standard error on s is then found from the values of s that give a log-likelihood that is 0.5 less than the maximum log-likelihood, i.e. one standard deviation (1σ) assuming a Gaussian distribution.

2.11 Mass and radius calculations for the star and planet

The analysis of the light curve for a transiting exoplanet in a circular orbit provides constraints on three geometrical parameters – the scaled semimajor axis, a/R_* , the planet–star radius ratio, $k = R_p/R_*$, and the impact parameter, $b = a \cos(i)/R_*$ (Seager & Mallén-Ornelas 2003). Kepler’s law can be used to convert the parameter a/R_* to a direct constraint on the mean stellar density

$$\rho_* = \frac{3M_*}{4\pi R_*^3} = \frac{3\pi}{GP^2(1+q)} \left(\frac{a}{R_*} \right)^3. \quad (3)$$

In general, the mass ratio $q = M_p/M_*$ is negligible for transiting exoplanets. The same information is available from the analysis of transits for planets in non-circular orbits provided that independent constraints are available for both the eccentricity, e , and the longitude of periastron, ω (Kipping 2014). These parameters combined with the semi-amplitude of the star’s spectroscopic orbit due to the planet, K , lead directly to a measurement of the planet’s surface gravity,

$$g_p = \frac{2\pi}{P} \frac{(1-e^2)^{1/2} K}{(R_p/a)^2 \sin i} \quad (4)$$

(Southworth, Wheatley & Sams 2007). One more constraint is needed to obtain the mass and radius of the planet. This is typically an estimate for either the mass or radius of the host star. Estimates for both mass and radius will be needed in cases where the stellar density is poorly constrained by the light curve, e.g. if the transits are shallow compared to the noise.

The function `funcs.massradius` within `pycheops` implements these calculations using the nominal solar and planetary constants defined in the module `constants`. Confidence limits and standard errors on parameters are calculated using a Monte Carlo approach with a sample of 100 000 values per parameter. For parameters specified as a mean with standard error the sample of values is generated assuming a normal distribution. For parameters provided as a sample of points from the posterior probability distribution (PPD), e.g. using the output from EMCEE, we select 100 000 values from the sample, with re-selection if required. Where multiple input samples with the same length are provided, e.g. samples generated from EMCEE, values are sampled in a way that preserves correlations between these parameters. Output statistics generated from the Monte Carlo sample include: mean, median, and half-sample mode, standard error, and asymmetric error bars calculated from the 15.9 per cent, median and 84.1 per cent percentile points of the sample. The function `funcs.massradius` accepts input of the parameters M_* , R_* , and a/R_* independently, so it is possible to calculate a value of ρ_* from a/R_* that is inconsistent with the input values of M_* and R_* . This leads to an ambiguity over which values of M_* and R_* to use in the calculation of the planet mass and radius. To resolve this ambiguity, R_p is calculated from k and R_* , and is only calculated if both of these values are provided. Similarly, g_p is only calculated from equation (4). The mean planet density, ρ_p , is calculated from g_p and m_p , i.e. the input value of R_* is not used in the calculation of ρ_p . The sub-modules `MultiVisit` and `Dataset`

both provide `massradius` class methods that use the output from the last fit to the light curve(s) as input to `funcs.massradius`. For these class methods, if only one of the parameters M_* or R_* is provided by the user then the other is calculated from a/R_* using equation (3).

If the width of the transit is not well defined by the light curve itself, e.g. due to gaps in the light curve or if the transit is shallow, then it is very useful to place a prior on the mean stellar density. As can be seen from equation (3), this stellar property is directly related to the parameter R_*/a and this parameter is itself directly related to the transit width, e.g. for circular orbits the transit width in phase units is $W = (R_*/a)\sqrt{(1+k)^2 - b^2}/\pi$. The `StarProperties` class can be used to estimate the mean stellar density, ρ_* , for stars with surface gravities $3.697 < \log g < 4.65$ using a linear relation between $\log(\rho_*)$ and $\log g$ derived using the method and data described in Moya et al. (2018).

3 EARLY SCIENCE PROGRAMME

In this section, we report the results from the first exoplanet transits observed by *CHEOPS* during its Early Science programme for four well-known exoplanets: GJ 436 b, HD 106315 b, HD 97658 b, and GJ 1132 b. These observations are used to assess the in-flight performances of *CHEOPS* for measuring transit parameters, and to compare this performance with the results obtained by reanalysing transit light curves from the *Kepler* K2 mission, *TESS*, and *Spitzer* Space Telescope (*Spitzer*, hereafter). The targets were selected from a list of well-known transiting exoplanets based on their visibility around the dates when *CHEOPS* nominal science operations were due to start. Several targets were selected in order to demonstrate the capabilities of *CHEOPS* for transiting planets over a range of stellar and planetary properties. The Early Science programme also includes observations of the eclipses of WASP-189 b, the orbital phase curve of 55 Cnc b and the transits of v^2 Lupi b. The results from these observations are reported elsewhere (Lendl et al. 2020; Delrez et al. 2021; Morris et al. 2021).

3.1 Observations

The log of *CHEOPS* observations is presented in Table 1. The data set comprises three transits each for GJ 436 b and GJ 1132 b, two transits of HD 106315 b and one transit of HD 97658 b. *CHEOPS* observes from low-Earth orbit so observations are often interrupted because the line of sight to the target is blocked by the Earth or because the satellite is passing through the South Atlantic Anomaly (SAA). The ratio between the uninterrupted observation time and the total duration of the observation sequence (‘visit’) is also noted in Table 1 and is at least 58 per cent for all of the visits analysed here.

3.2 Photometric extraction

All *CHEOPS* data are automatically processed at the *CHEOPS* science operations centre (SOC). The data reduction pipeline (DRP) calibrates the raw images, e.g. it applies bias, gain and non-linearity corrections, subtracts the dark current and scattered light, and applies a flat-field correction. The *CHEOPS* field of view rotates continuously so the photometric aperture used to measure the flux from the target star is periodically contaminated by the read-out trail from other stars on the CCD. This ‘smear’ effect is also corrected for by the DRP. The DRP also simulates the field of view based on the positions and magnitudes of the target and nearby stars as listed in the *Gaia* DR2 catalogue (Gaia Collaboration 2018). The

Table 1. Log of *CHEOPS* observations. Data sets are labelled by the sequence number given in the first column throughout this paper. Eff. is the fraction of the observing interval covered by valid observations of the target. R_{ap} is the aperture radius in pixels used to compute the light curve analysed in this paper. The column T_{exp} gives the exposure time in terms of the integration time per image multiplied by the number of images stacked on-board prior to download.

| # | Target | G (mag) | Start date (UTC) | Duration (s) | T_{exp} | N_{obs} | Eff. (per cent) | File key | R_{ap} |
|---|-----------|--------------|---------------------|-----------------|------------------|------------------|--------------------|----------------------------|-----------------|
| 1 | GJ 436 | 9.57 | 2020-03-27T23:56:16 | 27433 | 1 × 60 s | 340 | 74 | CH_PR100041_TG000302_V0102 | 25.0 |
| 2 | | | 2020-04-02T06:53:35 | 27433 | 1 × 60 s | 334 | 73 | CH_PR100041_TG000303_V0102 | 25.0 |
| 3 | | | 2020-04-23T11:05:36 | 28153 | 1 × 60 s | 300 | 64 | CH_PR100041_TG001301_V0102 | 25.0 |
| 1 | HD 106315 | 8.89 | 2020-04-02T22:43:57 | 87305 | 1 × 41 s | 1954 | 92 | CH_PR100041_TG000802_V0102 | 25.0 |
| 2 | | | 2020-05-01T14:59:19 | 85992 | 1 × 41 s | 1510 | 72 | CH_PR100041_TG001401_V0102 | 25.0 |
| 1 | HD 97658 | 7.51 | 2020-04-22T04:59:16 | 27650 | 3 × 11 s | 607 | 72 | CH_PR100041_TG001201_V0102 | 25.0 |
| 1 | GJ 1132 | 12.14 | 2020-03-26T23:52:36 | 26052 | 1 × 60 s | 301 | 70 | CH_PR100041_TG000401_V0102 | 15.5 |
| 2 | | | 2020-03-28T14:27:57 | 27613 | 1 × 60 s | 269 | 58 | CH_PR100041_TG000402_V0102 | 15.0 |
| 3 | | | 2020-04-04T02:48:40 | 30674 | 1 × 60 s | 314 | 61 | CH_PR100041_TG000403_V0102 | 15.0 |

contamination of the photometric aperture by nearby stars is reported in the DRP data products so that the user has the option to apply or ignore this contamination correction. Light curves are calculated using three pre-defined aperture radii with radii of 22.5, 25, and 30 pixels¹⁴ labelled RINF, DEFAULT, and RSUP, respectively. Light curves labelled OPTIMAL are also provided for a fourth aperture radius calculated to maximize the signal-to-noise ratio for the target while minimizing contamination from other stars in the image. The data files generated by the DRP include a data reduction report that summarizes each data processing step and that provides various data quality metrics. Full details can be found in Hoyer et al. (2020). All light curves in this paper were processed using *CHEOPS* DRP version cn03-20200703T111359.

3.3 Host star characterization

For all targets we determined the stellar radii utilizing a modified version of the infrared flux method (IRFM; Blackwell & Shallis 1977). The method allows for derivation of angular diameters of stars using known relationships between this parameter, stellar effective temperature, and an estimate of the apparent bolometric flux. The angular diameter combined with the parallax can then be used to calculate the stellar radius. In this study, we used a Markov chain Monte Carlo (MCMC) method to compare the synthetic fluxes, determined by attenuating stellar atmospheric models with a galactic extinction law parametrized by the reddening $E(B - V)$. The reddened spectra were convolved with the broad-band response functions for the chosen bandpasses. These were compared to the observed *Gaia* G , G_{BP} , and G_{RP} , 2MASS J , H , and K , and *WISE* $W1$ and $W2$ fluxes and relative uncertainties retrieved from the most recent data releases (Skrutskie et al. 2006; Wright et al. 2010; *Gaia* Collaboration 2021) in order to obtain the apparent bolometric fluxes. The resulting angular diameters are combined with the offset-corrected *Gaia* EDR3 parallaxes (Lindgren et al. 2021) to derive stellar radii.

In this study, we used the ATLAS stellar atmospheric models (Castelli & Kurucz 2003) for HD 106315 and HD 97635, however, for the cooler stars in the sample (GJ 436 and GJ 1132) we adopted the radii derived using PHOENIX models (Allard, Homeier & Freytag 2011) as these spectral energy distributions contain molecular band absorption that can be important in the characterization of M-dwarfs. Atmospheric models for calculation of the synthetic photometry were built from stellar parameters measured from the analysis of the star's

spectrum, as described in the individual subsections on each star below.

For each star the effective temperature, T_{eff} , the metallicity, $[\text{Fe}/\text{H}]$, and the radius, R_{\star} , were used as input parameters to infer the mass M_{\star} and age t_{\star} from two different sets of stellar evolutionary models, namely PARSEC v1.2S (Marigo et al. 2017) and CLES (Scuflaire et al. 2008). The isochronal M_{\star} and t_{\star} from PARSEC v1.2S were derived by applying the grid-based interpolation method known as isochrone placement and described in Bonfanti et al. (2015) and Bonfanti, Ortolani & Nascimbeni (2016). In the case of CLES, instead, a direct computation of the evolutionary track based on the set of input parameters was performed. The consistency of the two pairs was successfully checked following the validation procedure based on the χ^2 test presented in details in Bonfanti et al. (2021), so that we finally merge the two probability distributions of both M_{\star} and t_{\star} and computed their respective medians and standard deviation.

The results and additional details of the analysis are presented separately for each target in the subsection below. Photospheric abundance ratios are quoted relative to the solar composition from Asplund et al. (2009).

3.4 Light-curve analysis

We used PYCHEOPS version 1.0.0 to analyse the data. The photometric aperture was selected based on the lowest point-to-point root mean square (RMS) reported in the data reduction reports. The correction for contamination calculated by the DRP was applied to all light curves. We applied a correction for the ramp effect to all data sets apart from the observations of GJ 1132. This correction is generally very small ($\lesssim 100$ ppm). Observations with high background levels due to observing close to the Earth's limb (>5 per cent above the median background level) were excluded from the analysis. We also excluded data points more than 5 standard deviations from a median-smoothed version of each light curve. Typically, fewer than 5 data points are rejected from the analysis using this criterion.

To select decorrelation parameters we did an initial fit to each light curve with no decorrelation and used the RMS of the residuals from this fit, σ_p , to set the prior on the decorrelation parameters, $\mathcal{N}(0, \sigma_p)$ or, for df/dt , $\mathcal{N}(0, \sigma_p/\Delta t)$ where Δt is the duration of the visit. We then added decorrelation parameters to the fit one-by-one, selecting the parameter with the lowest Bayes factor at each step and stopping when $B_p > 1$ for all remaining parameters. This process sometimes leads to a set of parameters including some that are strongly correlated with one another and so are therefore not well determined, i.e. they have large Bayes factors. We therefore go

¹⁴The image scale for *CHEOPS* is 1 arc second per pixel.

through a process of repeatedly removing the parameter with the largest Bayes factor if any of the parameters have a Bayes factors $B_p > 1$. The second step of this process typically removes no more than 1 or 2 parameters.

Gaussian-process (GP) regression is an effective way to account for the additional uncertainty in the parameters derived from observational data in cases where the time-correlated noise sources (‘systematics’) are present. The use of GP regression is common practice within the exoplanet research community, partly because much of the research into exoplanets for the first two decades of this relatively new branch of astrophysics had to use instrumentation that was never designed to observe the weak signals from exoplanet systems. Time-correlated noise sources may arise within the instrument, the environment (particularly for ground-based observations) or from astrophysical noise sources, e.g. intrinsic variability of the host star. By design, *CHEOPS* has very low levels of instrumental noise. Analysis of long-duration observations of bright stars with *CHEOPS* have demonstrated that instrumental noise is between 15 and 80 ppm on time-scales of a few hours for isolated stars in the magnitude range covered here. These observations also show that the standard error estimates on the count rates provided with the DRP data files are reliable but slightly underestimate the true noise in the light curves by a factor ≈ 1.3 . This may be due to small errors in the calibration of the data, e.g. flat-fielding errors, or weak cosmic ray events that are difficult to identify if they affect pixels near the peaks in the image of the star. To account for this small amount of extra noise we assume that it is Gaussian white noise with standard deviation σ_w . The amplitude of the noise due to stellar granulation and stochastically driven oscillations for late-type star has been characterized in detail using data from the *Kepler* mission (Kallinger et al. 2014). For dwarf stars ($\log g \lesssim 4$), the amplitude of this noise on time scales relevant to the observations presented here ($\sim 10^2$ – 10^3 μHz) is typically no more than 100 ppm. Therefore, there is little justification *a priori* to include a GP in the analysis of a *CHEOPS* light curve for moderately bright dwarf stars. For all the light curves analysed here, we checked that the power spectrum plotted in log–log space is flat, i.e. consistent with white noise, as expected. Consequently, we do not include GPs in the analysis of the light curves analysed here. Note that the same argument does not apply to subgiant stars, e.g. we observed granulation noise in the *CHEOPS* light curve of KELT-11 ($\log g \approx 3.7$) and included a GP in the analysis of that system using *PYCHEOPS* (Benz et al. 2021). Similarly, *CHEOPS* is able to detect and characterize granulation noise and solar-like oscillations for very bright Sun-like stars such as ν^2 Lupi ($V = 5.65$, Delrez et al. 2021).

For all of the visits analysed here, we repeated the analysis using different photometric apertures, or without rejecting data with high background levels, or without the correction for the ramp effect, or (except for GJ 1132) excluding the correction for contaminating background stars. For the analysis with *MultiVisit* we also experimented with different values N_{roll} . In all these cases, the results are negligibly different to the results reported here.

Sampling of the PPD for the model parameters is done with EMCEE using 256 walkers and 512 steps following a ‘burn-in’ phase of 1024 steps to ensure that the sampler has converged. Convergence of the sampler was checked using visual inspection of the parameters values from all the walkers plotted versus step number. These ‘trail plots’ show no trends in mean value or width and all the walkers appeared to be randomly sampling the parameter values in very similar way.

For convenience, the light curves are normalized to their median value prior to analysis. We store the original light curve prior to

normalization and use this *post hoc* to convert the parameter c_i used to model the out-of-transit level for data set i to an observed out-of-transit count rate in photoelectrons per second [$e^- \text{ s}^{-1}$].

3.4.1 GJ 436 b

The warm-Neptune GJ 436 b orbits a moderately bright M2.5 V star ($V = 10.6$, $G = 9.6$) with an orbital period of 2.64 d (Butler et al. 2004). It was the first Neptune-mass exoplanet found to transit its host star (Gillon et al. 2007). Several studies have scrutinized the evaporating atmosphere of this planet using observations from ultraviolet (Kulow et al. 2014; Ehrenreich et al. 2015; Lavie et al. 2017; dos Santos et al. 2019) to infrared wavelengths (Pont et al. 2009; Knutson et al. 2011, 2014; Lanotte et al. 2014). A second planet has been posited to explain the significant orbital eccentricity of GJ 436 b ($e \approx 0.15$; Maness et al. 2007; Ribas, Font-Ribera & Beaulieu 2008) but recent studies based on extensive radial velocity data have not confirmed previous claims for the existence of this second planet (Lanotte et al. 2014; Trifonov et al. 2018). The orbit of GJ 436 b is significantly misaligned with the rotation axis of its host star (Bourrier et al. 2018).

To estimate the mass and mean stellar density of GJ 436 we used the empirical calibrations implemented in the software *KMDWARFPARAM* (Hartman et al. 2015). These empirical relations are well-determined for stars with masses and radii similar to GJ 436. For the input to *KMDWARFPARAM* we used the apparent magnitudes in the V , J , H , and K bands listed on SIMBAD and the parallax from *Gaia* EDR3. The results are summarized in Table 3. The mass and radius obtained from *KMDWARFPARAM* agree very well with our values obtained using the methods described in Section 3.3 ($M = 0.444 \pm 0.034 M_\odot$, $R = 0.444 \pm 0.059 R_\odot$) but are more precise. These radius estimates also agree well with the value $R = 0.455 \pm 0.018 R_\odot$ measured directly using interferometry by von Braun et al. (2012).

We observed three transits of GJ 436 b (Table 1). The transit ingress was observed on all three visits but only the final visit covers the point of mid-transit and the egress was only partly observed during the first visit. We first analysed the transits individually using `Dataset.lmfit.transit` in order to identify which decorrelation parameters are needed for each visit. We fixed the orbital period at the value $P = 2.6438980$ d (Lanotte et al. 2014). We also fixed the limb-darkening parameters at the values inferred from the tables provided by Claret (2019). The results are summarized in Table 2. Between 1 and 3 useful decorrelation parameters were identified per visit, with the highest order term needed for decorrelation against roll angle being $\sin(\phi)$. GJ 436 is moderately bright and there is little contamination of the photometric aperture from other stars. As a result, the instrumental noise trends in the light curves have very low amplitudes ($\lesssim 300$ ppm). A small but significant linear trend with time is seen for all three visits which we ascribe to stellar variability on time scales longer than the visit duration. The power spectral density (PSD) of the residuals from these initial fits are shown in fig. B1 of the supplementary online material. The small amount of power near orbital frequency of the *CHEOPS* spacecraft and its first harmonic for data set 1 is not statistically significant, i.e. the PSDs of the residuals are consistent with the white-noise level expected based on the typical error bar per datum. The trends in the data with spacecraft roll angle and our fit to this trend for data set 3 are shown in fig. C1 of the supplementary online material.

For the combined analysis of the visits using *MultiVisit* we set priors on f_c and f_s based on the values of $e = 0.152 \pm 0.009$

Table 2. Summary of the initial analysis for individual visits for targets with more than one visit using `Dataset.lmfit.transit`. T_c is the time of mid-transit and RMS is the standard deviation of the residuals from the best fit. The numbering of the visits is the same as in Table 1. Note that the standard errors quoted here are based on the estimated covariance matrix, so may be underestimated. Values preceded by = were held fixed in the analysis. Data from the individual visits to GJ 1132 provide no useful constraint on the impact parameter, b . The variables in final column are as follows: time, t ; spacecraft roll angle, ϕ , PSF centroid position, (x, y) ; smear correction, `smear`; aperture contamination, `contam`; image background level, `bg`. Digits in parentheses are standard errors in the final digit of the preceding value.

| # | Target | BJD _{TDB} T_c −2458900 | D (per cent) | W | b | RMS (ppm) | Decorrelation parameters |
|---|-----------|--------------------------------------|-------------------|------------|-----------------|--------------|---|
| 1 | GJ 436 | 36.6865(1) | 0.49(5) | 0.0156(4) | 0.74 ± 0.03 | 262 | t |
| 2 | | 41.975(1) | 0.63(3) | 0.0160(5) | 0.77 ± 0.02 | 265 | $t, \text{contam}, \text{bg}$ |
| 3 | | 63.1321(3) | 0.65(1) | 0.0196(2) | 0.67 ± 0.02 | 266 | $t, \sin(\phi)$ |
| 1 | HD 106315 | 42.944(1) | 0.031(2) | 0.0161(2) | 0.63 ± 0.04 | 238 | $t, x, \text{bg}, \text{smear}, x$ |
| 2 | | 71.592(13) | 0.027(2) | 0.0160(5) | $= 0.63$ | 250 | $\sin(\phi), x$ |
| 1 | GJ 1132 | $=35.6559$ | 0.30(3) | 0.0193(3) | $= 0.77$ | 1262 | <code>contam, smear, t, cos(ϕ), sin(2ϕ), cos(2ϕ),</code> |
| 2 | | $=37.2849$ | 0.22(4) | 0.0118(18) | $= 0.77$ | 1125 | <code>contam, bg, t, x, y, sin(ϕ), cos(2ϕ), sin(2ϕ),</code> |
| 3 | | $=43.8006$ | 0.27(13) | 0.0138(12) | $= 0.77$ | 1408 | <code>contam, bg, t, sin(ϕ), cos(2ϕ)</code> |

Table 3. Results from our analysis of GJ 436 b. Gaussian priors on parameters with mean μ and standard deviation σ are noted using the notation $\mathcal{N}(\mu, \sigma)$. For each data set $i = 1, 2, 3$, c_i is the mean count rate out of eclipse, df_i/dt is the linear trend with time, $df_i/d\text{contam}$ is the correlation of flux with the predicted contamination of the aperture by background stars, and df_i/dbg is the correlation of flux with the estimated background level in the image. The quantities `contam` and `bg` are normalized so that the coefficients give the amplitude of the trend in each light curve. This analysis uses implicit roll-angle decorrelation with $N_{\text{roll}} = 1$.

| Parameter | Value | Notes |
|---------------------------------|-------------------------|-------------------------------|
| Input parameters | | |
| T_{eff} (K) | 3505 ± 51 | 1 |
| $\log g$ (cgs) | 4.91 ± 0.07 | 1 |
| [Fe/H] | -0.04 ± 0.16 | 1 |
| M_* (M_{\odot}) | 0.445 ± 0.018 | |
| P (d) | 2.643898 | 2 |
| K (m s^{-1}) | 17.38 ± 0.17 | 3 |
| Model parameters | | |
| D | 0.00700 ± 0.00018 | |
| W | 0.01593 ± 0.00015 | |
| b | 0.802 ± 0.012 | |
| T_0 | 0.26212 ± 0.00012 | $\mathcal{N}(0.262, 0.01), 4$ |
| h_1 | 0.733 ± 0.051 | $\mathcal{N}(0.73, 0.1)$ |
| h_2 | $=0.633$ | |
| $\ln \sigma_w$ | -12.1 ± 3.3 | $\mathcal{N}(-10, 5)$ |
| c_1 (10^6 e-/s) | 15.36531 ± 0.00045 | |
| df_1/dt (d^{-1}) | 0.00059 ± 0.00017 | |
| c_2 (10^6 e-/s) | 15.40448 ± 0.00082 | |
| df_2/dt (d^{-1}) | 0.00076 ± 0.00016 | |
| df_2/dbg | -0.00036 ± 0.00016 | |
| $df_2/d\text{contam}$ | 0.000373 ± 0.000094 | |
| c_3 (10^6 e-/s) | 15.34905 ± 0.00054 | |
| df_3/dt (d^{-1}) | 0.00034 ± 0.00020 | |
| Derived parameters | | |
| M_p (M_{\oplus}) | 21.72 ± 0.63 | |
| R_p (R_{\oplus}) | 3.85 ± 0.10 | |
| R_* (R_{\odot}) | 0.422 ± 0.010 | |
| R_p/R_* | 0.0837 ± 0.0011 | |
| a/R_* | 14.56 ± 0.30 | |
| i ($^{\circ}$) | 86.84 ± 0.11 | |
| $\log(\rho_*/\rho_{\odot})$ | 0.773 ± 0.027 | $\mathcal{N}(0.724, 0.032)$ |
| g_p (m s^{-2}) | 14.35 ± 0.67 | |
| ρ_p (g cm^{-3}) | 2.09 ± 0.15 | |
| σ (ppm) | 6 ± 29 | |

Notes. 1: Schweitzer et al. (2019). 2: Lanotte et al. (2014). 3: Trifonov et al. (2018). 4: BJD_{TDB} − 2458947.

and $\omega = 325.8^{\circ} \pm 5.7^{\circ}$ from Trifonov et al. (2018). The limb-darkening parameter h_2 has only a subtle effect on the light curve during the ingress and egress phases of the transit so we decided to fix this parameter at the value inferred from the tables provided by Claret (2019). We include h_1 as a free parameter in the analysis with a Gaussian prior centred on the value obtained from the same tables with an arbitrary choice of 0.1 for the standard error. We also imposed a prior on the mean stellar density based on the values obtained from KMDWARFPARAM (Hartman et al. 2015). Based on the results of the analysis for the individual visits we decided to use $N_{\text{roll}} = 1$. Increasing this value by 1 or 2 has a negligible effect on the results. The results from this analysis are given in Table 3 and the fits to the light curves are shown in Fig. 1. Correlations between selected parameters from this analysis are shown in Fig. 2. These results are discussed in the context of previous studies of GJ 436 b in Section 5.1.

3.4.2 HD 106315 b

HD 106315 is a F5 V star with a V-band magnitude of 8.95 that is known to host at least two planets (Crossfield et al. 2017; Rodriguez et al. 2017). The inner planet (b) is a super-Earth with a radius of $2.44 R_{\oplus}$ and an orbital period of 9.55 d; the outer planet (c) is a Neptune-sized planet with a radius of $4.35 R_{\oplus}$ and a period of 21.06 d (Barros et al. 2017). Kosiarek et al. (2021) have measured accurate masses for these planets based on extensive multi-year radial velocity measurements for these planets together with transits observed with *Spitzer*. That study was motivated by on-going and planned observing programmes with *Hubble Space Telescope* (*HST*) and James Webb Space Telescope (*JWST*) to characterize the atmospheres of these planets. These authors find that the orbital eccentricity of these planets is close to $e = 0$ based on their extensive radial velocity data and on stability arguments.

The rotation of HD 106315 measured from spectral line broadening is moderately fast ($v_{\text{rot}} \sin i_* \approx 13 \text{ km s}^{-1}$) but the *K2* light curve and ground-based photometry show that the intrinsic variability of this star is $\lesssim 0.2$ per cent at optical wavelengths (Crossfield et al. 2017; Kosiarek et al. 2021). There are several published estimates for the mass and radius of this star based on a variety of methods – these are summarized in Table 4 together with our own estimates based on the methods described in Section 3.3. We have used these results to estimate the mass of this star and to set a prior on the mean stellar density for the analysis of the light curve. In both cases we have used the weighted mean value and the weighted sample standard

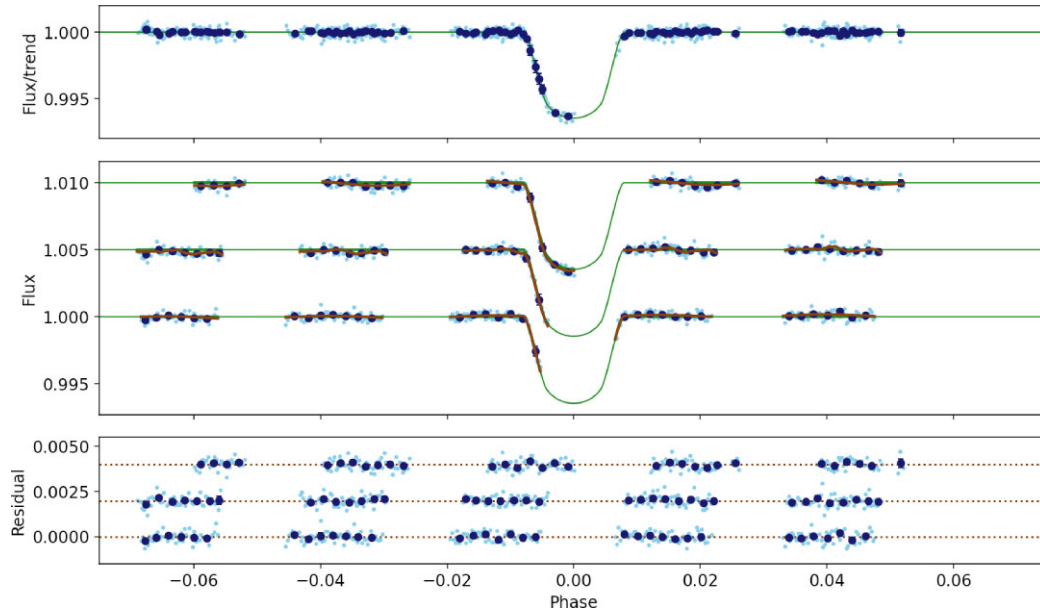


Figure 1. CHEOPS transit light curves of GJ 436 b. *Upper panel:* All data after removing trends. Observed light curves are displayed in cyan. The dark blue points are the data points binned over 0.002 phase units. The best-fitting transit model is shown in green. *Middle panel:* Observed light curves are displayed in cyan offset by multiples of 0.005 units. The dark blue points are the data points binned over 0.002 phase units. The full model including instrumental trends is shown in brown and the transit model without trends is shown in green. *Lower panel:* Residuals obtained after subtraction of the best-fitting model in the same order as the upper plot offset by multiples of 0.002 units.

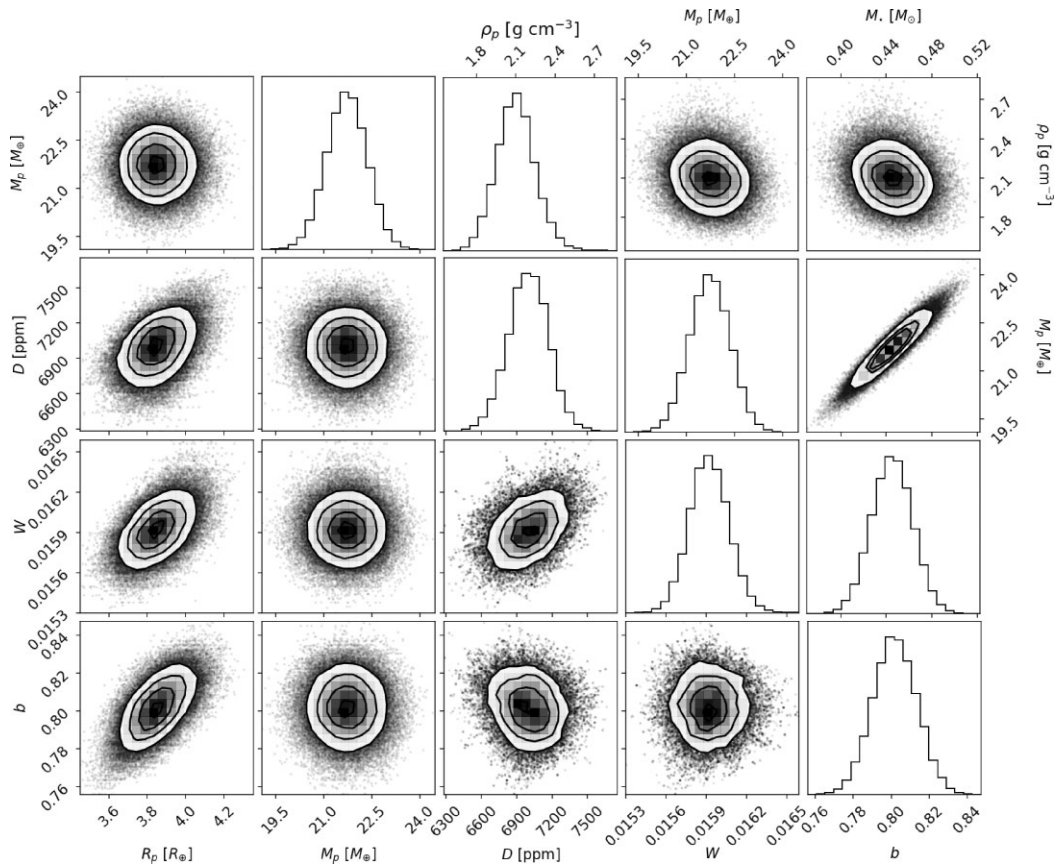


Figure 2. Correlation plot for selected parameters from our analysis of GJ 436.

Table 4. Mass, radius, and mean stellar density estimates for HD 106315.

| M_* (M_\odot) | R_* (R_\odot) | $\log(\rho_*/\rho_\odot)$ | Ref. |
|---------------------|---------------------|---------------------------|------|
| 1.227 ± 0.064 | 1.257 ± 0.014 | -0.209 ± 0.027 | 1 |
| 1.154 ± 0.042 | 1.269 ± 0.024 | -0.248 ± 0.029 | 2 |
| 1.091 ± 0.036 | 1.296 ± 0.058 | -0.300 ± 0.060 | 3 |
| 1.027 ± 0.034 | 1.281 ± 0.058 | -0.311 ± 0.061 | 4 |
| 1.07 ± 0.03 | 1.18 ± 0.03 | -0.186 ± 0.035 | 5 |
| 1.088 ± 0.043 | 1.252 ± 0.041 | -0.229 ± 0.045 | Mean |

Notes. 1. This work. 2. Kosiarek et al. (2021). 3. Barros et al. (2017). 4. Rodriguez et al. (2017). 5. Crossfield et al. (2017).

deviation to set the value and its error. We use the sample standard error rather than the standard error in the mean because the values in Table 4 are not completely independent and the differences between these estimates may reflect systematic sources of uncertainty e.g. the unknown helium abundance for this star.

To derive the stellar atmospheric parameters for HD 106315 in Table 4 we used version 5.22 of the Spectroscopy Made Easy SME package (Piskunov & Valenti 2017) to analyse the spectrum of this star observed with the High Accuracy Radial velocity Planet Searcher (HARPS) spectrograph on the European Southern Observatory (ESO) 3.6-m telescope. All available HARPS spectra were downloaded from the ESO science archive and co-added prior to analysis. In this package synthetic spectra are calculated starting from a first guess of individual stellar parameters and utilizing a grid of stellar models, in this case taken from the ATLAS-12 set (Kurucz 2013). Atomic parameters were downloaded from the VALD data base (Piskunov et al. 1995). Keeping all but one parameter fixed and iterating and minimizing until no further improvement is realized one arrives eventually at a set of stellar parameters (Fridlund et al. 2017).

We observed two transits of HD 106315 b with *CHEOPS* (Table 1). The first transit was observed when the target was close to the anti-Sun direction so the observing efficiency is very high. The data set for the second visit shows spurious jumps in values of the spacecraft roll angle versus time due to a software bug that was fixed in DRP version 13.0. These spurious roll angle values were corrected prior to the analysis presented here. We first analysed both transits individually using `Dataset.lmfit_transit` in order to identify which decorrelation parameters are needed for each visit. We fixed the orbital period at the value $P = 9.552105$ d and assumed that the orbital eccentricity is $e = 0$ (Kosiarek et al. 2021). We also fixed the limb-darkening parameters at the values inferred from the tables provided by Maxted (2018). The second data set does not cover the ingress or egress to the transit so the impact parameter is unconstrained by these data. We fixed the impact parameter to the value determined from the analysis of the first data set for the analysis of the second data set. The results are summarized in Table 2. Between 2 and 4 useful decorrelation parameters were identified per visit, with the highest order term needed for decorrelation against roll angle being $\sin(\phi)$. HD 106315 is bright and there is little contamination of the photometric aperture from other stars. As a result, the instrumental noise trends in the light curves have very low amplitudes ($\lesssim 120$ ppm). A small but significant linear trend with time is seen for the first visit which we ascribe to stellar variability on time-scales longer than the visit duration. The power spectral density (PSD) of the residuals from these initial fits are shown in fig. B2 of the supplementary online material. There is a small excess in power at low frequencies for the second data set that we assume is related to rapid changes in the scattered light level towards the start and end of each visit. This can lead to a gradients in the background level

in some images that is not (yet) accounted for in the data reduction pipeline. The trends in the data with spacecraft roll angle and our fit to this trend for data set 2 are shown in fig C2 of the supplementary online material.

We used the same fixed values of e and P for the combined analysis of the two visits using `MultiVisit`. We set priors on the limb-darkening parameters h_1 and h_2 based on the results from Maxted (2018). We included the small correction to the tabulated values recommended by Maxted (2018) based on the observed offset between these values and the observed values of h_1 and h_2 for stars similar to HD 106315. Based on the results of the analysis for the individual visits we decided to use $N_{\text{roll}} = 1$. Changing this value by ± 1 has a negligible effect on the results. The results from this analysis are given in Table 5. Correlations between selected parameters from this analysis are shown in Fig. 3. The fits to the light curves are shown in Fig. 4.

We also attempted a similar analysis without the prior on the stellar density. The results from that analysis are consistent with the results presented here but with increased uncertainties, particularly for the impact parameter, b ($D = 0.000283 \pm 0.000028$, $W = 0.01647 \pm 0.00043$, $b = 0.54 \pm 0.31$). The mean stellar density obtained from this analysis of the light curve with no prior on ρ_* is $\log(\rho_*/\rho_\odot) = -0.16 \pm 0.26$.

These results are discussed in the context of previous studies of HD 106315 b in Section 5.2. To aid this discussion, we also performed an analysis of the 6 transits of HD 106315 b in the *K2* light curve of HD 106315 (Howell et al. 2014) using very similar assumptions to those used in our analysis of the *CHEOPS* light curve. We used the light curve corrected for instrumental effects using the *KS2C* algorithm (Aigrain et al. 2015) downloaded from the Mikulski Archive for Space Telescopes¹⁵ (MAST). There are clear offsets in the mean flux level either side of each transit in this light curve so we used a smooth function generated with a Gaussian process fit to the data between the transits to put the flux level on to a consistent scale for every transit. We used the same light-curve model from `PYCHEOPS` used for the analysis of the *CHEOPS* light curve and set the same priors on the transit parameters and mean stellar density. The priors on the limb-darkening parameters were similar to those used for the analysis of the *CHEOPS* light curve although the values differ due to the different instrument response functions. We did account for the finite integration time of the *K2* observations but did not include any additional parameters for decorrelation of instrumental noise sources. The results from this analysis are also given in Table 5. These results and the results from previous studies (Barros et al. 2017; Crossfield et al. 2017; Rodriguez et al. 2017) are consistent with one another but the errors on the transit parameters vary by a factor ≈ 2 because of the different assumptions made in each study, e.g. the error on a/R_* is sensitive to the prior used for ρ_* .

3.4.3 HD 97658 b

The super-Earth HD 97658 b orbits a moderately bright K1 V star ($V = 7.7$, $G = 7.5$) with a period of $P = 9.43$ d (Howard et al. 2011). Transits of the host star by this planet were found using ground-based observations (Henry et al. 2011) and confirmed using follow-up observations with *Spitzer* (Van Grootel et al. 2014) and the Microvariability and Oscillations in STars (*MOST*) telescope (Dragomir et al. 2013). Guo et al. (2020) analysed near-infrared spectra of HD 97658 b observed during four transits with the WFC3

¹⁵<https://archive.stsci.edu/>

Table 5. Results from our analysis of the transits for HD 106315 b. Gaussian priors on parameters with mean μ and standard deviation σ are noted using the notation $\mathcal{N}(\mu, \sigma)$. For each data set i , c_i is the mean count rate out of eclipse, df_i/dt is the linear trend with time and $df_i/dsmear$ is the correlation of flux with the smear correction. The quantity $smear$ is normalized so that the coefficient gives the amplitude of the trend in the light curve. This analysis uses implicit roll-angle decorrelation with $N_{roll} = 1$.

| Parameter | Value | Notes |
|---------------------------------|--------------------------|------------------------------|
| Input parameters | | |
| T_{eff} (K) | 6450 ± 105 | |
| $\log g$ (cgs) | 4.28 ± 0.10 | |
| [Fe/H] | -0.09 ± 0.05 | |
| [Mg/H] | -0.09 ± 0.12 | |
| [Si/H] | -0.05 ± 0.06 | |
| M_* (M_{\odot}) | 1.091 ± 0.029 | |
| P (d) | 9.552105 | 1 |
| K (m s^{-1}) | 2.88 ± 0.85 | 1 |
| Model parameters | | |
| D | 0.000284 ± 0.000014 | |
| W | 0.01637 ± 0.00038 | |
| b | 0.601 ± 0.045 | |
| T_0 | 1952.4979 ± 0.0017 | 2 |
| h_1 | 0.777 ± 0.012 | $\mathcal{N}(0.777, 0.012)$ |
| h_2 | 0.419 ± 0.055 | $\mathcal{N}(0.421, 0.055)$ |
| $\ln \sigma_w$ | -9.34 ± 0.10 | $\mathcal{N}(-9.3, 1.0)$ |
| c_1 (10^6 e-/s) | 20.05254 ± 0.00028 | |
| df_1/dt (d^{-1}) | -0.000154 ± 0.000020 | |
| df_1/dbg | 0.000029 ± 0.000037 | |
| $df_1/dsmear$ | 0.000089 ± 0.000030 | |
| c_2 (10^6 e-/s) | 20.02291 ± 0.00024 | |
| Derived parameters | | |
| M_p (M_{\oplus}) | 10.1 ± 3.0 | |
| R_p (R_{\oplus}) | 2.25 ± 0.10 | |
| R_* (R_{\odot}) | 1.222 ± 0.045 | |
| R_p/R_* | 0.01686 ± 0.00041 | |
| a/R_* | 15.95 ± 0.55 | |
| i ($^{\circ}$) | 87.84 ± 0.23 | |
| $\log(\rho_*/\rho_{\odot})$ | -0.224 ± 0.045 | $\mathcal{N}(-0.229, 0.045)$ |
| g_p (m s^{-2}) | 19.5 ± 6.0 | |
| ρ_p (g cm^{-3}) | 4.8 ± 1.6 | |
| σ_w (ppm) | 87 ± 9 | |
| K2 light curve analysis | | |
| D | 0.000277 ± 0.000016 | |
| W | 0.01662 ± 0.00050 | |
| b | 0.586 ± 0.054 | |
| T_0 | 0.2030 ± 0.0020 | 2 |
| h_1 | 0.778 ± 0.012 | $\mathcal{N}(0.78, 0.012)$ |
| h_2 | 0.422 ± 0.054 | $\mathcal{N}(0.419, 0.055)$ |
| $\ln \sigma_w$ | -9.942 ± 0.037 | |
| R_p/R_* | 0.01663 ± 0.00048 | |
| a/R_* | 15.92 ± 0.56 | |
| i ($^{\circ}$) | 87.89 ± 0.25 | |
| $\log(\rho_*/\rho_{\odot})$ | -0.227 ± 0.046 | $\mathcal{N}(-0.229, 0.045)$ |
| σ_w (ppm) | 48 ± 2 | |

Note. 1: Kosiarek et al. (2021). 2: BJD_{TDB} - 2457615.

instrument on *HST*, together with extensive observations of the transit from the STIS instrument on *HST*, *Spitzer*, and *MOST*. Despite this wealth of data their atmospheric modeling results were inconclusive. Guo et al. were able to rule out previous claims of additional planets in the HD 97658 system based on a large set of radial velocity observations obtained over two decades. Their analysis of these radial velocities also shows that the orbit of HD 97658 b is circular or nearly so ($e \lesssim 0.03$). Variability of the activity indicators in the

same spectroscopic data set lead to an estimate of $P_{\text{rot}} \approx 35$ d for the rotation period of this star. They conclude that HD 97658 b is a favourable target for atmospheric characterization through transmission spectroscopy with *JWST*.

The *TESS* light curve of HD 97658 shows very little intrinsic variability in this star ($\lesssim 0.02$ per cent), as is expected for a very slowly rotating K-dwarf. The results from recent studies of the host star properties are summarized in Table 6 together with the results from our own analysis. We have used the weighted mean of these results to calculate the values of the stellar mass and mean density used in this analysis, and the weighted sample standard deviation to estimate the errors on these parameters. We use the sample standard deviation rather than the standard error in the mean because the values in Table 6 are not completely independent and the differences between these estimates may reflect systematic sources of uncertainty, e.g. the unknown helium abundance for this star.

We observed a single transit of HD 97658 b with *CHEOPS* (Table 1). Although the observing efficiency is quite high (72 per cent) the coverage of the ingress to the transit is poor. HD 97658 is a moderately bright and isolated star so the level of instrumental noise in the light curve is very low.

We used an initial analysis of this transit with `Dataset.lmfit.transit` to determine which decorrelation parameters should be used in our final analysis. We fixed the orbital period at the value $P = 9.489295$ d and assumed a circular orbit (Guo et al. 2020). The stellar atmospheric parameters are taken from the SWEET-Cat catalogue (Santos et al. 2013; Sousa et al. 2018). These are a homogeneous set of parameters derived using the ARES + MOOG methodology (Sousa 2014) which were originally presented in Mortier et al. (2013). The limb darkening parameters h_1 and h_2 were included as free parameters in this initial fit. The mean stellar density with its error from Table 6 was included as a constraint in the least-squares analysis. This initial analysis shows that there are weak trends in the data with amplitudes ≈ 100 ppm correlated with $\sin(\phi)$ and the background level in the images. There are no other significant instrumental trends in the light curve. If we include a linear trend with time in the least-squares analysis we find that it has an amplitude $\lesssim 40$ ppm d^{-1} . Based on these results we used `Dataset.emcee.sampler` to sample the joint PPD for the transit model parameters, the two decorrelation parameters, and the hyperparameter $\ln \sigma_w$ for our noise model. The results are given in Table 7. We set priors on the limb-darkening parameters h_1 and h_2 based on the results from Maxted (2018). We included the small correction to the tabulated values recommended in Maxted (2018) based on the observed offset between these values and the observed values of h_1 and h_2 for stars similar to HD 97658. The fit to the light curve is shown in Fig. 5 and correlation plots for selected parameters are shown in Fig. 6. The power spectral density (PSD) of the residuals shown in fig. B3 of the supplementary online material is consistent with the expected white-noise level based on the median error bar per datum. The trends in the data with spacecraft roll angle and our fit to this trend are shown in fig. C3 of the supplementary online material.

These results are discussed in the context of previous studies of HD 97658 b in Section 5.3. To aid this discussion, we also performed an analysis of the 2 transits of HD 97658 b in the *TESS* light curve of HD 97658 using very similar assumptions to those used in our analysis of the *CHEOPS* light curve. We used the light curve PDCSAP.FLUX values provided in the data file downloaded from MAST. Although the variability between the transits in this light curve is very small ($\lesssim 0.02$ per cent) we used a smooth function generated with a Gaussian process fit to the data between the transits

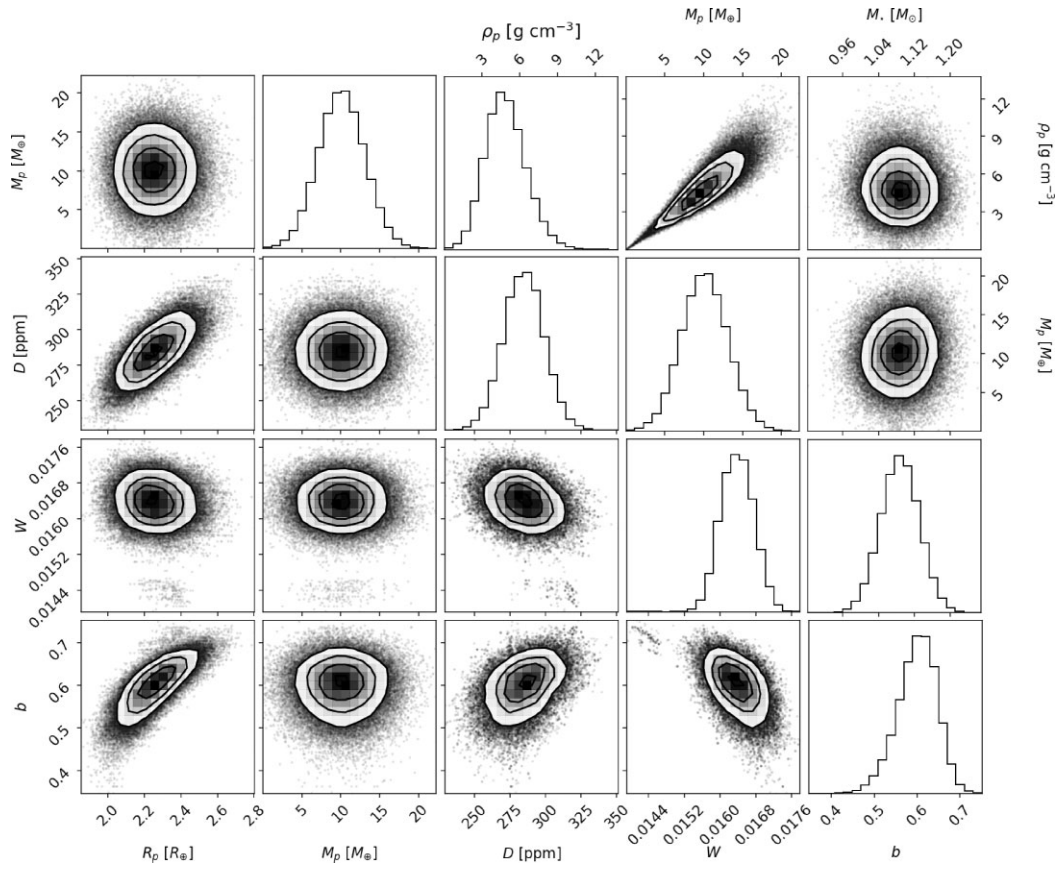


Figure 3. Correlation plot for selected parameters from our analysis of HD 106315.

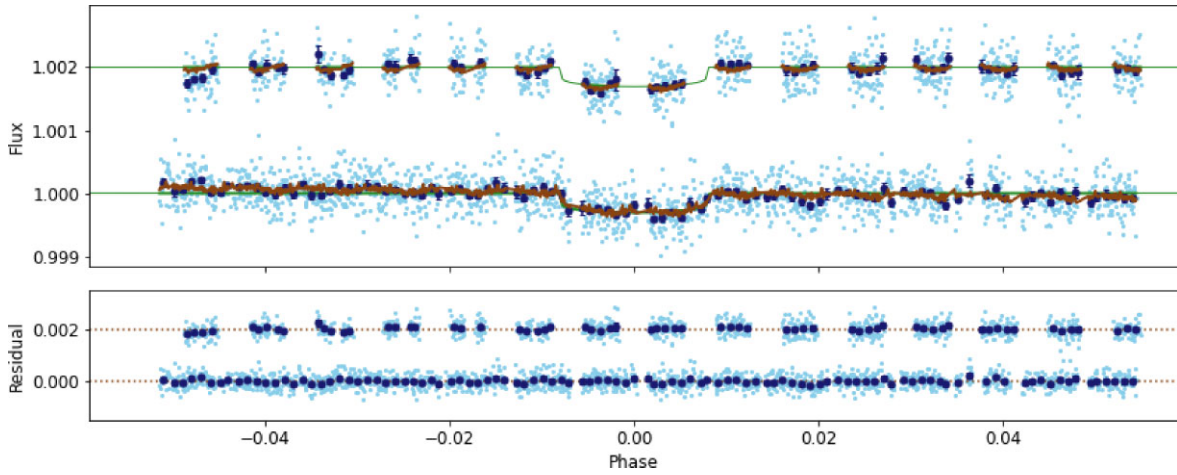


Figure 4. *CHEOPS* transit light curves of HD 106315 b. *Upper panel:* Observed light curves are displayed in cyan offset by multiples of 0.002 units. The dark blue points are the data points binned over 0.001 phase units. The full model including instrumental trends is shown in brown and the transit model without trends is shown in green. *Lower panel:* Residuals obtained after subtraction of the best-fitting model in the same order as the upper plot offset by multiples of 0.002 units.

to ensure that the flux level is on a consistent scale for both transits. We used the same light curve model from *PYCHEOPS* used for the analysis of the *CHEOPS* light curve and set the same priors on the transit parameters and mean stellar density. The priors on the limb-darkening parameters were similar to those used for the analysis of the *CHEOPS* light curve although the values differ due to the different instrument response functions. The results from this analysis are also given in Table 7.

3.4.4 *GJ 1132 b*

GJ 1132 is a nearby M4.5 V star ($d \approx 12$ pc) that was found to host a transiting exoplanet using ground-based photometry from the M_{Earth} project (Berta-Thompson et al. 2015). *GJ 1132 b* is a small rocky planet with a radius of $\sim 2.4 R_{\oplus}$, a mass of $\sim 1.7 M_{\oplus}$, and an orbital period of $P = 1.63$ d. Additional photometry from the M_{Earth}-South telescopes and over 100 h of observations with

Table 6. Mass, radius, and mean stellar density estimates for HD 97658. The error quoted on the mean value is the standard deviation of the sample.

| M_* (M_\odot) | R_* (R_\odot) | $\log(\rho_*/\rho_\odot)$ | Ref. |
|---------------------|---------------------|---------------------------|------|
| 0.758 ± 0.044 | 0.761 ± 0.009 | 0.236 ± 0.030 | 1 |
| 0.74 ± 0.02 | 0.74 ± 0.02 | 0.26 ± 0.04 | 2 |
| 0.74 ± 0.01 | 0.73 ± 0.01 | 0.279 ± 0.019 | 3 |
| 0.77 ± 0.05 | 0.741 ± 0.024 | 0.276 ± 0.053 | 4 |
| 0.752 ± 0.035 | 0.743 ± 0.017 | 0.263 ± 0.037 | Mean |

Notes. 1. This work. 2. Brewer et al. (2016). 3. Bonfanti et al. (2016). 4. Van Grootel et al. (2014).

Table 7. Results from our analysis of HD 97658. Gaussian priors on parameters with mean μ and standard deviation σ are noted using the notation $\mathcal{N}(\mu, \sigma)$. RMS is the standard deviation of the residuals from the best fit.

| Parameter | Value | Notes |
|---------------------------------|------------------------------|-----------------------------|
| Input parameters | | |
| T_{eff} (K) | 5137 ± 36 | 1 |
| $\log g$ (cgs) | 4.47 ± 0.09 | 1 |
| [Fe/H] | -0.35 ± 0.02 | 1 |
| [Mg/H] | -0.25 ± 0.03 | 1 |
| [Si/H] | -0.31 ± 0.04 | 1 |
| M_* (M_\odot) | 0.752 ± 0.035 | |
| P (d) | 9.489 295 | 2 |
| K (m s^{-1}) | 2.81 ± 0.15 | 2 |
| Model parameters | | |
| D | $0.000\,825 \pm 0.000\,017$ | |
| W | $0.0124\,40 \pm 0.000\,051$ | |
| b | 0.475 ± 0.037 | |
| T_0 | $1961.876\,39 \pm 0.000\,23$ | 3 |
| h_1 | 0.715 ± 0.011 | $\mathcal{N}(0.72, 0.012)$ |
| h_2 | 0.406 ± 0.054 | $\mathcal{N}(0.397, 0.055)$ |
| $\ln \sigma_w$ | -10.70 ± 0.64 | |
| c (10^6 e-/s) | $56.550\,66 \pm 0.000\,82$ | |
| $df/d\sin(\phi)$ | $0.000\,110 \pm 0.000\,013$ | $\mathcal{N}(0.0, 0.00015)$ |
| df/dbg | $-0.000\,101 \pm 0.000\,032$ | $\mathcal{N}(0.0, 0.00015)$ |
| Derived parameters | | |
| M_p (M_\oplus) | 7.62 ± 0.42 | |
| R_p (R_\oplus) | 2.293 ± 0.070 | |
| M_* (M_\odot) | 0.741 ± 0.018 | |
| R_p/R_* | $0.028\,72 \pm 0.000\,30$ | |
| a/R_* | 23.35 ± 0.51 | |
| i ($^\circ$) | 88.83 ± 0.12 | |
| $\log(\rho_*/\rho_\odot)$ | 0.278 ± 0.029 | $\mathcal{N}(0.267, 0.029)$ |
| g_p (m s^{-2}) | 14.2 ± 1.1 | |
| ρ_p (g cm^{-3}) | 3.48 ± 0.36 | |
| σ_w (ppm) | 23 ± 14 | |
| RMS (ppm) | 137 | |
| TESS analysis | | |
| T_0 | 0.9407 ± 0.0010 | 4 |
| D | $0.000\,805 \pm 0.000\,039$ | |
| W | $0.012\,35 \pm 0.000\,20$ | |
| b | 0.498 ± 0.046 | |
| h_1 | 0.771 ± 0.012 | $\mathcal{N}(0.773, 0.012)$ |
| h_2 | 0.391 ± 0.056 | $\mathcal{N}(0.39, 0.055)$ |
| $\ln \sigma_w$ | -7.905 ± 0.018 | |
| R_p/R_* | $0.028\,38 \pm 0.000\,68$ | |
| a/R_* | 23.21 ± 0.52 | |
| i ($^\circ$) | 88.77 ± 0.14 | |
| $\log(\rho_*/\rho_\odot)$ | 0.270 ± 0.029 | $\mathcal{N}(0.267, 0.029)$ |
| σ (ppm) | 369 ± 7 | |

Notes. 1. Sousa et al. (2018). 2. (Guo et al. 2020). 3. $\text{BJD}_{\text{TDB}} - 2458961$. 4: $\text{BJD}_{\text{TDB}} - 2458904$.

Spitzer by Dittmann et al. (2017) did not reveal any additional transiting exoplanets in this system. Nevertheless, Bonfils et al. (2018) found evidence for a second non-transiting planet in this system (GJ 1132 c) with an orbital period $P \approx 8.83$ d from extensive radial velocity observations. Southworth et al. (2017) claimed the detection of an extended atmosphere on GJ 1132 b based on an increased transit depth in the z' and K bands relative to other wavelengths. Subsequent spectrophotometric observations with the LDSS3C multi-object spectrograph on the Magellan Clay Telescope by Diamond-Lowe et al. (2018) failed to confirm the anomalous transit depth around wavelengths of $1 \mu\text{m}$ and are consistent with a featureless spectrum, implying that GJ 1132 b has a high mean molecular weight atmosphere or no atmosphere at all. More recently, Swain et al. (2021) have claimed the detection of atmospheric absorption features in the transmission spectrum of GJ 1132 b obtained with the WFC3 instrument on *HST* over the wavelength range $1.13 - 1.64 \mu\text{m}$, but at a much lower level than the broad-band features claimed by Southworth et al. (~ 250 ppm cf. ~ 1500 ppm). Mugnai et al. (2021) found no evidence for molecular absorption in the transmission spectrum of GJ 1132 b from their analysis of the same WFC3 data analysed by Swain et al. (2021).

Based on its V -band magnitude ($V \approx 14.9$, Girard et al. 2011), GJ 1132 lies beyond the faint magnitude limit of *CHEOPS* ($V = 12-13$). However, the high scientific interest of small planets transiting M dwarfs, which are favourable for atmospheric characterization, motivated us to assess the precision that *CHEOPS* can achieve for such faint targets. *CHEOPS* has a very broad spectral response which is very similar to the *Gaia* G band, so the count rate for cool stars like GJ 1132 is equivalent to a Sun-like star with the same G -band magnitude but approximately 1 mag brighter in the V band. Nevertheless, GJ 1132 is a faint star ($G = 12.1$) in a crowded part of the sky (Fig. 7) and the transits due to GJ 1132 b are shallow, so this is a challenging target for observations with *CHEOPS*.

The three transits of GJ 1132 b we observed with *CHEOPS* have an observing efficiency from 58 to 70 per cent. The duration of the transit is approximately half that of a *CHEOPS* orbit but we were unfortunate that the majority of the transit falls in a gap for two of the visits. The light curves are dominated by instrumental noise due to contamination of the aperture by nearby stars. For this reason, the OPTIMAL photometric aperture has a radius ≈ 15 pixels, much smaller than the aperture size typically used for *CHEOPS* observations. In addition to the problems with contamination and unfortunate scheduling, it was found that using the science images to track the star during the visits gives worse performance than using the off-axis star trackers. This mode of operation ('payload in the loop') was disabled for the final visit. The RMS pointing residual was reduced from 2.7 arcsec and 3.8 arcsec for the first two visits to 0.36 arcsec for the final visit.

GJ 1132 shows little intrinsic variability. MEarth photometry of GJ 1132 shows rotational modulation with a period $P_{\text{rot}} \approx 125$ days and an amplitude ≈ 0.1 per cent (Berta-Thompson et al. 2015). To estimate the mass of GJ 1132 we used the mass- M_K relation from Benedict et al. (2016). The absolute K -band magnitude of GJ 1132 based on the parallax from *Gaia* EDR3 ($\pi = 79.321 \pm 0.018$ mas) and the K_s -band magnitude from 2MASS ($K_s = 8.322 \pm 0.027$) is $M_K = 7.819 \pm 0.027$. To estimate the error in this value we used the standard deviation of the residuals from this relation for the 9 stars in Benedict et al. with M_K in the range 7.62–8.02. Including the small additional uncertainty inherited from the error in M_K we estimate that the mass of GJ 1132 is $0.192 \pm 0.022 M_\odot$.

To estimate the mean stellar density of GJ 1132 we compiled a sample of stars with accurate and precise surface gravity

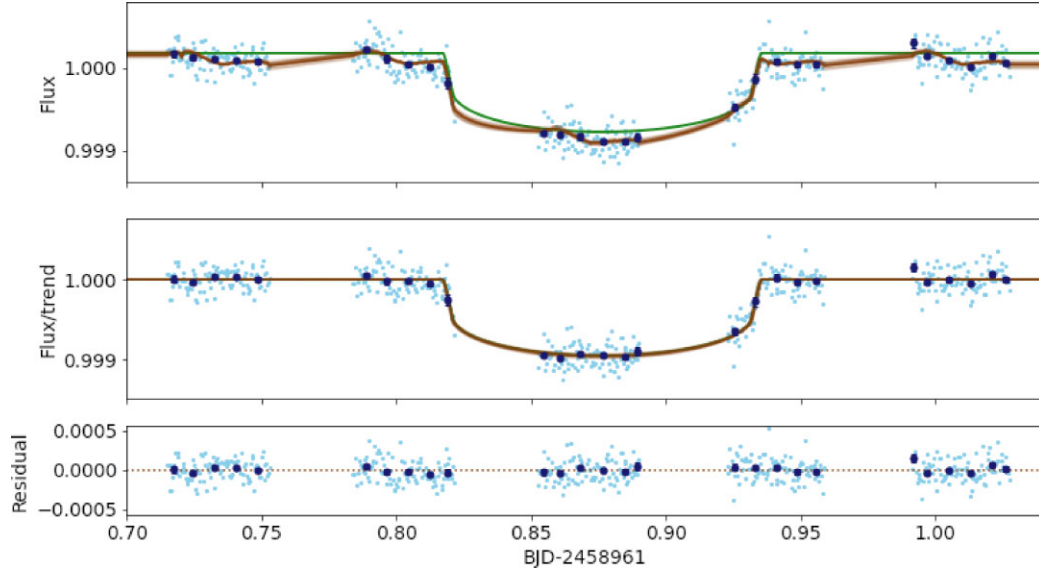


Figure 5. *CHEOPS* transit light curve of HD 97658 b. *Upper panel:* Observed light curve displayed as cyan points. The dark blue points are the data points binned over 11.5 min. The full model including instrumental trends is shown in brown and the transit model without trends is shown in green. Multiple versions of the full model sampled from the PPD are also shown in light brown. *Middle panel:* Same as the upper panel after dividing-out the instrumental trends in the data. *Lower panel:* Residuals from the best-fitting model.

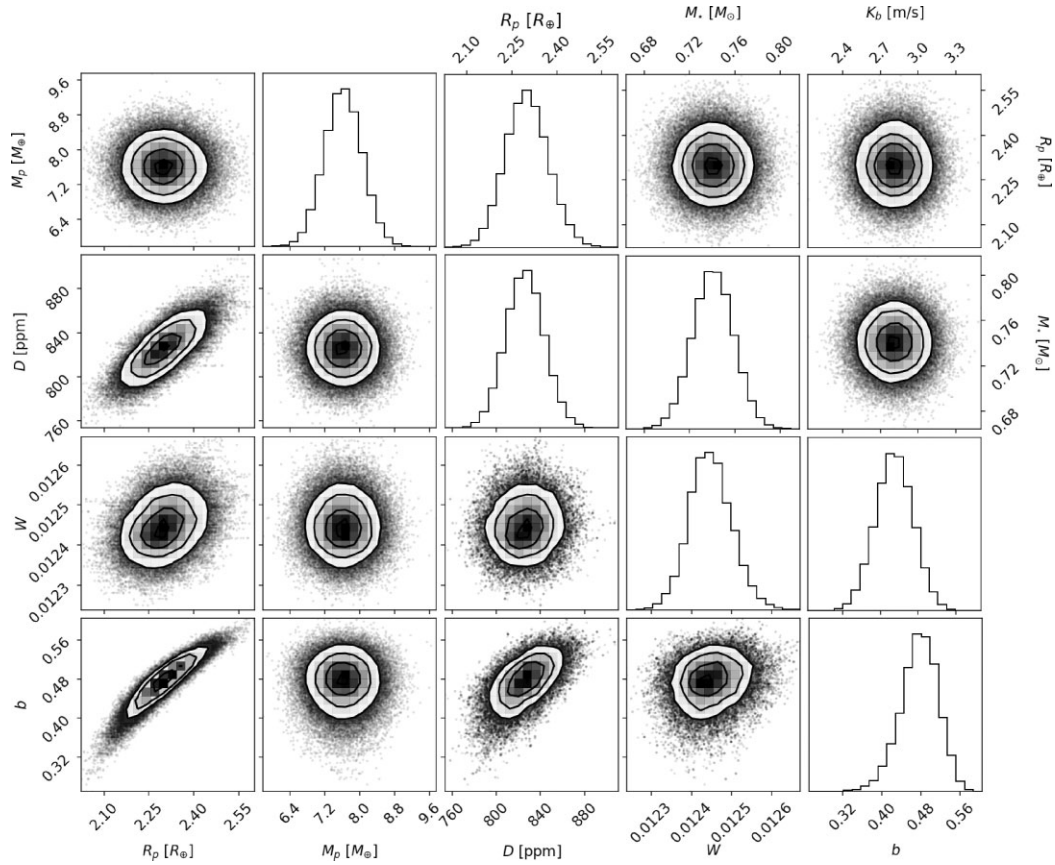


Figure 6. Correlation plot for selected parameters from our analysis of HD 97658.

measurements. We use surface gravity rather than mean stellar density directly because this parameter can be determined independently of any assumptions about the primary star mass for eclipsing binaries where an M-dwarf transits a solar-type star. The properties of these

stars are given in Table 8. Note that the value of $\log g$ quoted in table 4 of Casewell et al. (2018) is incorrect so we have re-calculated this value based on the mass and radius values given in the same table. We found that the 5-Gyr solar-metallicity isochrones from Baraffe

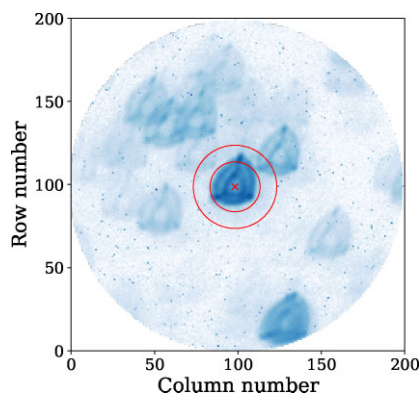


Figure 7. A typical image of GJ 1132 obtained with *CHEOPS* prior to calibration and cosmic ray removal. The blue circles indicate photometric apertures with radii of 15.0 and 22.5 pixels.

Table 8. Low-mass stars with precise $\log g$ measurements. Digits in parentheses are the standard error in the final digit of the preceding value.

| Star | Mass/ M_{\odot} | $\log g$ (cgs) | [Fe/H] | Ref. |
|--------------|-------------------|----------------|--------|------|
| J0543–56 B | 0.1641(59) | 5.09(4) | 0.23 | 1 |
| J1038–37 B | 0.1735(67) | 5.04(4) | 0.31 | 1 |
| J1013+01 B | 0.1773(77) | 5.02(2) | 0.29 | 1 |
| J1115–36 B | 0.1789(61) | 5.12(3) | 0.30 | 1 |
| J0339+03 B | 0.2061(95) | 5.12(5) | –0.25 | 1 |
| J2349–32 B | 0.174(6) | 5.104(14) | –0.28 | 2 |
| SAO 106989 B | 0.256(5) | 4.82(13) | –0.2 | 3 |
| HD 24465 B | 0.233(2) | 05.029(7) | 0.3 | 3 |
| CM Dra A | 0.2310(9) | 4.994(07) | –0.30 | 4, 5 |
| CM Dra B | 0.2396(9) | 05.010(6) | –0.30 | 4, 5 |
| J0522–25 A | 0.1739(13) | 5.057(21) | – | 6 |
| J0522–25 B | 0.2168(48) | 5.007(20) | – | 6 |
| J1934–42 B | 0.1864(55) | 5.045(12) | 0.29 | 7 |
| J2046+06 B | 0.1974(62) | 05.074(8) | 0.00 | 7 |

Notes. 1. von Boetticher et al. (2019). 2. Gill et al. (2019). 3. Chaturvedi et al. (2018). 4. Morales et al. (2009). 5. Terrien et al. (2012). 6. Casewell et al. (2018). 7. Swayne et al. (2021).

et al. (2015) gives a good estimate for the mass – $\log g$ relation in this mass range. There is no clear trend with [Fe/H] in the residuals for these stars so we do not account for [Fe/H] when we estimate $\log g$. Based on this isochrone and the standard error of the residuals, we estimate that the surface gravity of GJ 1132 is $\log g = 5.070 \pm 0.056$. The mean stellar density and radius implied by these values of the mass and $\log g$ are $R = 0.212 \pm 0.018 R_{\odot}$ and $\log(\rho/\rho_{\odot}) = 1.307 \pm 0.089$, respectively. This radius estimate is in very good agreement with the value $R = 0.202 \pm 0.016 R_{\odot}$ inferred from the absolute G -band magnitude using the $M_G - R$ relation from Rabus et al. (2019). Our mass and radius estimates are in good agreement with the values $M = 0.181 \pm 0.019$, $R = 0.207 \pm 0.016 R_{\odot}$ from Berta-Thompson et al. (2015). The slight increase in the mass and radius are a consequence of the slightly smaller parallax for GJ 1132 from *Gaia* EDR3 compared to the value used by Berta-Thompson et al. ($\pi = 83.07 \pm 1.69$ mas).

The T_{eff} and [Fe/H] estimates for GJ 1132 in Table 9 were obtained using ODUSSEAS, a machine learning tool to derive effective temperature and metallicity for M dwarf stars based on the measurement of the pseudo equivalent widths of stellar absorption lines in high-resolution optical spectra (Antoniadis-Karnavas et al. 2020). We applied ODUSSEAS to the spectrum obtained by combining the spectra of GJ 1132 observed with the HARPS

Table 9. Results from our analysis of GJ 1132. Gaussian priors on parameters with mean μ and standard deviation σ are noted using the notation $\mathcal{N}(\mu, \sigma)$. For each data set i , c_i is the mean count rate out of eclipse, df_i/dt is the linear trend with time, $df_i/d\text{contam}$ is the correlation of flux with the predicted contamination of the aperture by background stars, $df_i/d\text{smear}$ is the correlation of flux with the smear correction, and df_i/dbg is the correlation of flux with the estimated background level in the image. The quantities contam , smear , and bg are normalized so that the coefficients give the amplitude of the trend in each light curve. These results were obtained using implicit roll-angle decorrelation with $N_{\text{roll}} = 2$.

| Parameter | Value | Notes |
|-----------------------------------|----------------------------|----------------------------------|
| Input parameters | | |
| T_{eff} (K) | 3090 ± 65 | |
| $\log g$ (cgs) | 5.07 ± 0.06 | |
| [Fe/H] | -0.31 ± 0.10 | |
| M_{\star} (M_{\odot}) | 0.192 ± 0.022 | |
| R_{\star} (R_{\odot}) | 0.207 ± 0.0124 | |
| P (d) | $=1.628\,9287$ | 1 |
| K (m s^{-1}) | 2.85 ± 0.34 | 2 |
| Model parameters | | |
| D | $0.002\,44 \pm 0.000\,20$ | |
| W | $0.018\,76 \pm 0.000\,54$ | |
| b | 0.43 ± 0.16 | |
| T_0 | $0.914\,19 \pm 0.000\,44$ | $\mathcal{N}(0.9138, 0.002)$, 3 |
| h_1 | 0.861 ± 0.069 | $\mathcal{N}(0.75, 0.1)$ |
| h_2 | $=0.753$ | |
| $\ln \sigma_w$ | -7.034 ± 0.056 | $\mathcal{N}(-7.0, 0.5)$ |
| c_1 (10^6 e-/s) | $1.320\,92 \pm 0.000\,74$ | |
| df_1/dt (d^{-1}) | $0.004\,21 \pm 0.000\,91$ | |
| $df_1/d\text{smear}$ | 0.00117 ± 0.00063 | |
| $df_1/d\text{contam}$ | $-0.001\,49 \pm 0.000\,52$ | |
| c_2 (10^6 e-/s) | 1.2976 ± 0.0016 | |
| df_2/dt (d^{-1}) | 0.0041 ± 0.0014 | |
| df_2/dbg | -0.0022 ± 0.0011 | |
| $df_2/d\text{contam}$ | $-0.001\,58 \pm 0.000\,52$ | |
| c_3 (10^6 e-/s) | 1.3038 ± 0.0023 | |
| df_3/dt (d^{-1}) | $0.003\,98 \pm 0.000\,77$ | |
| df_3/dbg | -0.0022 ± 0.0010 | |
| $df_3/d\text{contam}$ | -0.0060 ± 0.0011 | |
| Derived parameters | | |
| M_p (M_{\oplus}) | 1.74 ± 0.25 | |
| R_p (R_{\oplus}) | 1.11 ± 0.10 | |
| R_{\star} (R_{\odot}) | 0.207 ± 0.016 | |
| R_p/R_{\star} | 0.0494 ± 0.0021 | |
| a/R_{\star} | 16.3 ± 1.1 | |
| i ($^{\circ}$) | 88.50 ± 0.66 | |
| $\log(\rho_{\star}/\rho_{\odot})$ | 1.338 ± 0.086 | $\mathcal{N}(1.307, 0.089)$ |
| g_p (m s^{-2}) | 13.7 ± 2.8 | |
| ρ_p (g cm^{-3}) | 7.0 ± 1.9 | |
| σ (ppm) | 881 ± 50 | |

Notes. 1. Southworth et al. (2017). 2. Bonfils et al. (2018). 3. $\text{BJD}_{\text{TDB}} - 2458938$.

spectrograph. This estimate of T_{eff} is in reasonably good agreement with the value $T_{\text{eff}} = 3203 \pm 53$ K based on the star’s absolute G -band magnitude and the $T_{\text{eff}} - M_G$ calibration from Rabus et al. (2019).

We used an initial analysis of each transit with `Dataset.lmfit.transit` to determine which decorrelation parameters should be used in the combined analysis of the three light curves. The correction of the ramp effect has not been calibrated for aperture radii less than 22.5 pixels so we did not apply the ramp correction to the light curves used here calculated with aperture radii ≈ 15 pixels. Extrapolating the ramp correction as a function of

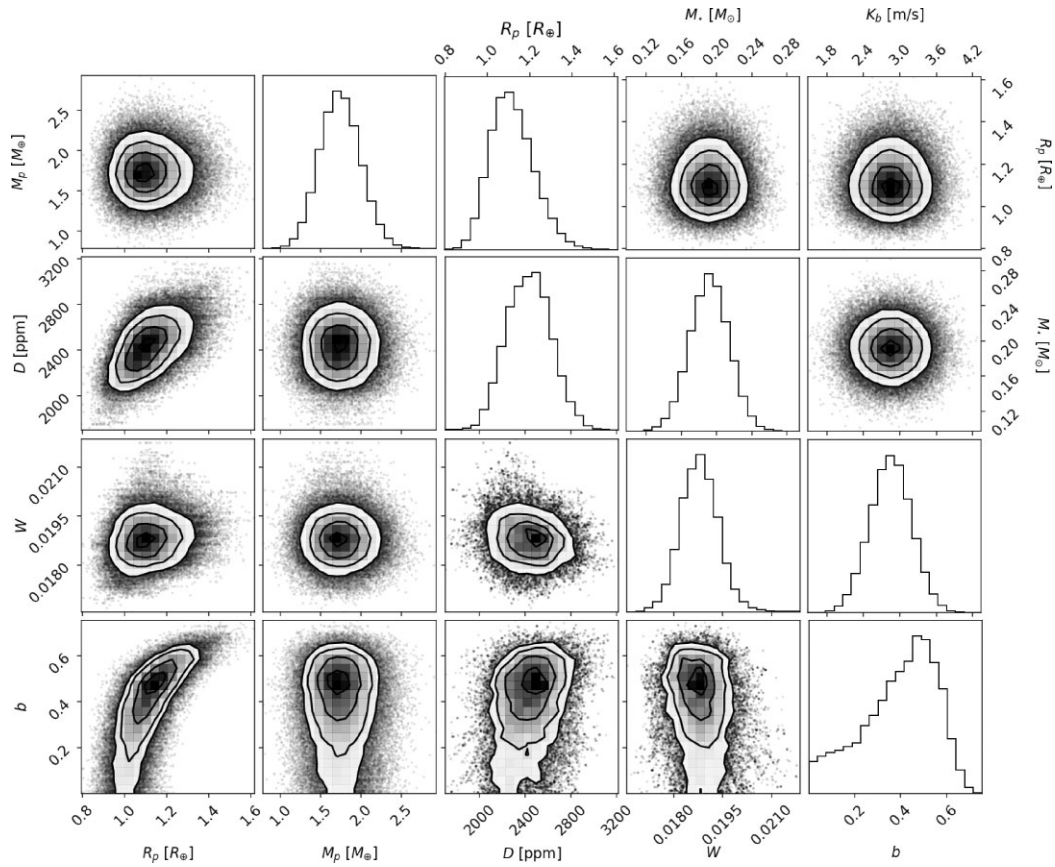


Figure 8. Correlation plot for selected parameters from our analysis of GJ 1132.

aperture radius suggests that this correction is <30 ppm for these light curves. We fixed the orbital period at the value $P = 1.628\,9287$ d (Southworth et al. 2017) and assumed a circular orbit for this initial analysis, and the limb-darkening parameters h_1 and h_2 were fixed at the values determined from table 10 of Claret (2019). We find that the individual transits provide no constraint on the impact parameter so we fixed this parameter at a nominal value $b = 0.77$. The mean stellar density estimate described above ($\log(\rho/\rho_\odot) = 1.307 \pm 0.089$) was included as a constraint in the least-squares analysis. Contamination by background stars is the dominant source of instrumental noise in the light curves so we included `dfdccontam` as a decorrelation parameter in the analysis of all the light curves. Other decorrelation parameters were selected in the usual way based on their Bayes factors using the method described in the introduction to this section. A summary of the results from this initial analysis is given in Table 2. The power spectral density (PSD) of the residuals shown in fig. B4 of the supplementary online material is consistent with the expected white-noise level based on the median error bar per datum for all three data sets. The trends in the data with spacecraft roll angle and our fit to these trends for each data set are shown in fig. C4 of the supplementary online material.

Bonfils et al. (2018) find that the eccentricity of the orbit is $e < 0.22$ at the 95 per cent confidence level so for the combined analysis of the visits using `MultiVisit` we assumed that the orbit is circular. The limb-darkening parameter h_2 has only a subtle effect on the light curve during the ingress and egress phases of the transit so we decided to fix this parameter at the value inferred from the tables provided by Claret (2019). We include h_1 as a free parameter in

the analysis with a Gaussian prior centred on the value obtained from the same tables with an arbitrary choice of 0.1 for the standard error. We imposed the same prior on the mean stellar density as used in the analysis of the individual visits. Based on the results of the analysis for the individual visits we decided to use $N_{\text{roll}} = 2$. The results from this analysis are given in Table 9. Correlations between selected parameters from this analysis are shown in Fig. 8. The fits to the light curves are shown in Fig. 9. The results found for an analysis with $N_{\text{roll}} = 3$ or using the `unwrap` option are almost indistinguishable from those presented here. We also tried an analysis with $N_{\text{roll}} = 1$ but there are clear trends in the residuals related to the roll angle. Even so, the results are consistent with those presented here. Very similar results were also found using the RINF aperture with a radius of 22 pixels. The optimum value of N_{roll} for the RINF aperture data is $N_{\text{roll}} = 3$; the values of D and b obtained are insensitive to the choice of N_{roll} or whether the `unwrap` option is used.

Dittmann et al. (2017) noted that the value of R_p/R_\star that they measured using MEarth data is inconsistent with the value obtained using *Spitzer* photometry at $4.5\,\mu\text{m}$. We have reanalysed the MEarth photometry provided in their table 1 because there is a clear non-linear trend in these data when plotted as a function of airmass. To model these data we use the `qpower2` transit model implemented in `PYCHEOPS` plus a 5th-order polynomial as a function of $\sec z - 1$ to account for trends with airmass (where z is the zenith distance of GJ 1132 at the time of observation) plus a sinusoidal model $a_{\text{rot}}\sin(2\pi t/P_{\text{rot}}) + b_{\text{rot}}\cos(2\pi t/P_{\text{rot}})$ with a period $P_{\text{rot}} = 125$ d to account for stellar variability modulated by the stars rotation period. We did not impose a prior on the mean stellar density for the analysis

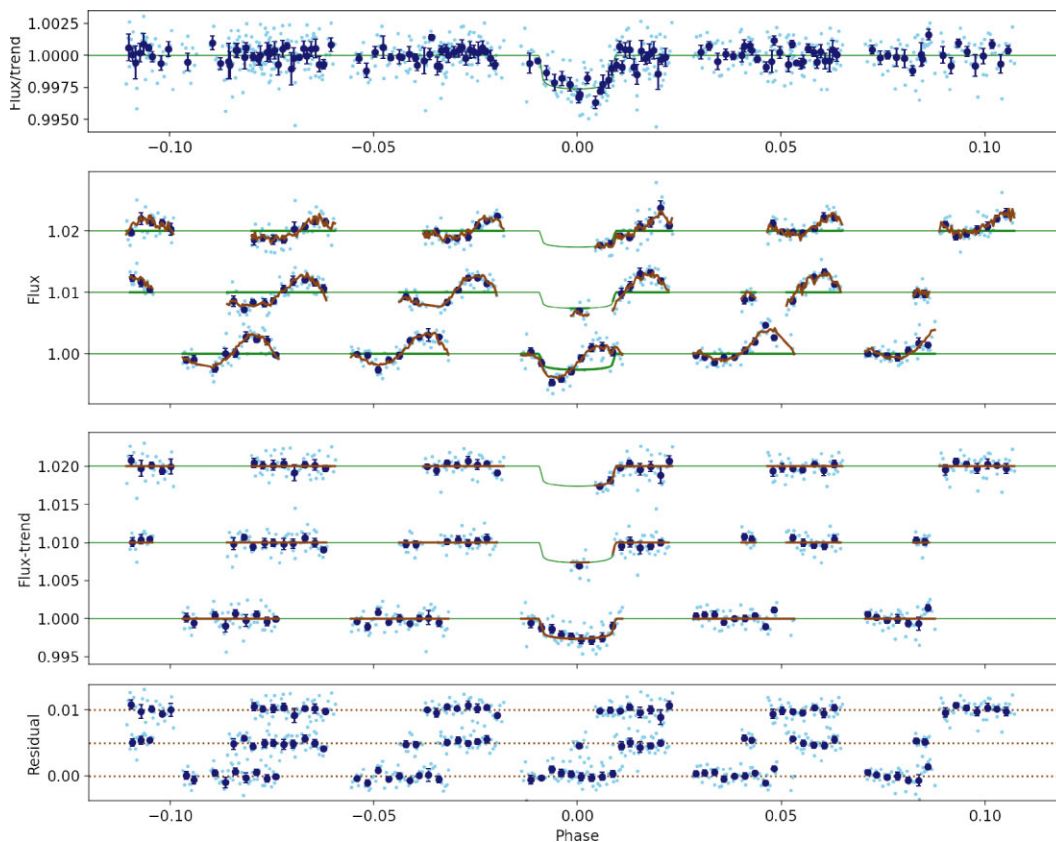


Figure 9. *Top:* CHEOPS observations of 3 transits of GJ 1132 b. *Upper panel:* All data after removing trends. Observed light curves are displayed in cyan. The dark blue points are the data points binned over 0.0025 phase units. The best-fitting transit model is shown in green. *Middle-upper plot* Observed light curves are displayed in cyan offset by multiples of 0.01 units. The full model including instrumental trends is shown in brown and the transit model without trends is shown in green. *Middle-lower panel:* Same as the middle-upper panel after removing trends correlated with space-craft roll angle. *Lower panel:* Residuals obtained after subtraction of the best-fitting model in the same order as the upper plot offset by multiples of 0.005 units.

of the MEarth data and only data within 0.075 phase units of the mid-transit were included in the fit. The results from this reanalysis are also given in Table 10.

These results are discussed in the context of previous studies of GJ 1132 b in Section 5.4.

3.4.5 Accuracy of the qpower2 algorithm

We used the ELLC light-curve model (Maxted 2016) to calculate a transit light curve for each of the 4 planets using direct numerical integration of the power-2 limb-darkening law. We then fit these light curves with light curves calculated using the qpower2 algorithm to measure the systematic error in the parameters R_p/R_* and a/R_* . In all cases, we find that this systematic error is negligible compared to the random error in these quantities.

3.5 Updated transit ephemerides

3.5.1 GJ 436 b

We used a linear fit to the time of mid-transit from Table 3, 8 times of mid-transit from Lanotte et al. (2014), and 4 times of mid-transit from Lothringer et al. (2018) to establish the following linear ephemeris for the times of mid-transit:

$$\text{BJD}_{\text{TDB}}(T_0) = 2455475.82450(3) + 2.64389759(7) \times E.$$

Values in parentheses give the standard error in the final digit of the preceding quantity. There is no evidence for any change in period greater than $\dot{P}/P \approx 6.0 \times 10^{-10}$ from these data.

3.5.2 HD 106315 b

We used a linear fit to the two times of mid-transit from Table 5 to establish the following linear ephemeris for the times of mid-transit for HD 106315 b:

$$\text{BJD}_{\text{TDB}}(T_0) = 2458427.132(1) + 9.55211(2) \times E.$$

3.5.3 HD 97658 b

We used a linear fit to the two times of mid-transit from Table 7, one time of mid-transit from Van Grootel et al. (2014), and 18 times of mid-transit from various instruments from Guo et al. (2020) to establish the following linear ephemeris for the times of mid-transit:

$$\text{BJD}_{\text{TDB}}(T_0) = 2457234.82213(16) + 9.4893072(25) \times E.$$

Values in parentheses are the standard error in the final two digits of the preceding quantity. This is a slight improvement on the value of the orbital period given by Guo et al. (2020) ($P = 9.489295(5)$ d), partly because of the extended baseline including the observation from CHEOPS, but also because we choose our reference time of

Table 10. Results from our reanalysis of the MEarth light curves for GJ 1132. Gaussian priors on parameters with mean μ and standard deviation σ are noted using the notation $\mathcal{N}(\mu, \sigma)$. The parameters $z_0 \dots z_5$ are the coefficients of the polynomial used to model the trend of tabulated flux with airmass. The tabulated flux values are assumed to all have the same standard error, σ_f .

| Parameter | Value | Notes |
|---------------------------|-----------------------------|----------------------------|
| Model parameters | | |
| D | 0.00237 ± 0.00010 | |
| W | 0.01903 ± 0.00033 | |
| b | 0.41 ± 0.23 | |
| T_0 | $2457184.55855 \pm 0.00069$ | BJD _{TDB} |
| P (d) | 1.6289227 ± 0.0000041 | |
| h_1 | 0.805 ± 0.037 | $\mathcal{N}(0.769, 0.15)$ |
| h_2 | $=0.76$ | |
| z_0 | 0.000070 ± 0.000079 | |
| z_1 | 0.0082 ± 0.0012 | |
| z_2 | -0.0423 ± 0.0055 | |
| z_3 | 0.0723 ± 0.0095 | |
| z_4 | -0.0504 ± 0.0069 | |
| z_5 | 0.0125 ± 0.0018 | |
| a_{rot} | -0.000108 ± 0.000034 | |
| b_{rot} | -0.000034 ± 0.000025 | |
| $\ln \sigma_f$ | -5.6410 ± 0.0039 | |
| Derived parameters | | |
| R_p/R_* | 0.0487 ± 0.0010 | |
| a/R_* | 16.2 ± 1.8 | |
| i ($^\circ$) | 88.6 ± 1.0 | |
| $\log(\rho_*/\rho_\odot)$ | 1.33 ± 0.15 | |
| σ_f (ppm) | 3549 ± 14 | |

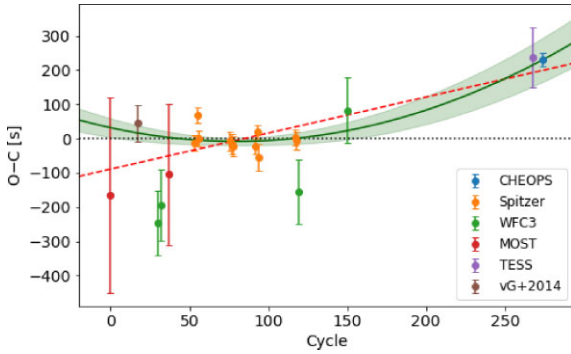


Figure 10. Observed – calculated times of mid-transit for HD 97658 b based on the linear ephemeris from Guo et al. (2020). The dashed line shows our updated linear ephemeris. The solid line with shaded band shows our updated quadratic ephemeris ± 1 standard deviation.

mid-transit (cycle $E = 0$) to minimize the covariance between this value and P .

Using the same data set we find the following quadratic ephemeris for the time of mid-transit:

$$\text{BJD}_{\text{TDB}}(T_0) = 2457234.82195(12) + 9.4892968(38) \times E + 0.5 \times (1.46 \pm 0.48) \times 10^{-7} \times E^2.$$

The Bayesian information criterion for this ephemeris is 37.9 cf. 55.5 for a linear ephemeris, i.e. there is strong evidence from these data that the orbital period of HD 97658 b is not constant. The observed times of mid-transit and our updated ephemerides are shown as residuals from the linear ephemeris from Guo et al. in Fig. 10.

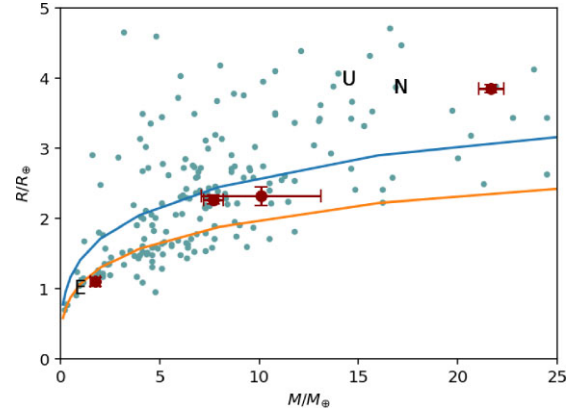


Figure 11. In order of increasing mass – GJ 1132 b, HD 97658 b, HD 106315 b, and GJ 436 b in the mass–radius plane compared to other extrasolar planets with well-determined parameters taken from TEPICat (cyan points) and models from Zeng, Sasselov & Jacobsen (2016) for planets composed of 100 per cent rock (lower line) or water (upper line). The mass and radius of Earth, Uranus and Neptune are also shown using the initial letters of these planets’ names.

3.5.4 GJ 1132 b

We used a linear fit to the times of mid-transit from Table 9, 27 times of mid-transit from Dittmann et al. (2017), 5 times of mid-transit from Mugnai et al. (2021), and 9 times of mid-transit from Southworth et al. (2017) to establish the following linear ephemeris for the times of mid-transit:

$$\text{BJD}_{\text{TDB}}(T_0) = 2457554.32450(9) + 1.6289292(4) \times E.$$

The errors reported on the times of mid-transit in table 3 of Mugnai et al. (2021) are clearly too small. We used the RMS residual from a linear fit to these times of mid-transit to assign a more realistic error of 0.00042 d to these values. There is no evidence for any change in period greater than $\dot{P}/P \approx 3.6 \times 10^{-9}$ from these data.

3.6 Planet mass and radius estimates

The values of the planet mass (M_p) and radius (R_p) given in Tables 3, 5, 7, and 9 are based on the values of a/R_* , i and $k = R_p/R_*$ measured from the *CHEOPS* light curves only. In this section, we make improved estimates for M_p and R_p using all published estimates for these parameters that are of similar precision to the values obtained from the *CHEOPS* data, or better. For all four planets we have used our best estimate for the stellar mass, M_* , together with the mean stellar density, ρ_* derived using Kepler’s law from a/R_* , to infer a value of R_* and, hence, $R_p = k \times R_*$. The masses and radii obtained are shown in Fig. 11.

3.6.1 GJ 436 b

Lothringer et al. (2018) observed two transits of GJ 436 b using the STIS spectrograph on *HST* with the G750L low-resolution grism covering the wavelength range 0.53–1.03 μm . These observations do not cover the egress of the transit so Lothringer et al. used fixed values for a/R_* and i from Morello et al. (2015) in their analysis. The weighted mean transit depth from the values at various wavelengths given in their table 3 using our method described in Appendix A is 6746 ± 30 ppm. Lothringer et al. find that using values of a/R_* and i from different sources introduces an additional uncertainty

≈ 130 ppm in the transit depth. Taking this into account, we find that the planet–star radius ratio from this study is $k = 0.08213 \pm 0.00081$.

Knutson et al. (2014) used the Wide Field Camera 3 (WFC3) instrument on *HST* to observe 4 transits of GJ 436 b over the wavelength range 1.2–1.6 μm . From their Table 1 we use the values $a/R_\star = 14.41 \pm 0.10$ and $i = 86.774^\circ \pm 0.030^\circ$, and the four values of R_p/R_\star from each visit which we combine to obtain the weighted average value $k = 0.08362 \pm 0.00015$.

Transits of GJ 436 b observed several times with *Spitzer* at 3.6, 4.5, and 8.0 μm . Some or all of these data have been analysed by Knutson et al. (2011), Beaulieu et al. (2011), Morello et al. (2015), and Lanotte et al. (2014). These studies use a variety of techniques to account for instrumental noise that is comparable to the transit depth in these light curves. Here, we use the results from Lanotte et al. since this is the only study to use all the available data. From the parameters in their table 3 we obtain the values $k = 0.08258 \pm 0.00017$, $i = 86.858^\circ \pm 0.52$, and $a/R_\star = 14.54 \pm 0.15$.

None of the studies above find any strong evidence for variations in transit depth with wavelength due to opacity sources in an extended atmosphere on GJ 436 b, so we have combined all these estimates of R_p/R_\star irrespective of wavelength. The values of a/R_\star , $\sin i$ and R_p/R_\star obtained by combining the above estimates with the results from Table 3 are given in Table 11, together with the resulting planetary mass and radius estimates.

3.6.2 HD 106315 b

The values of $\sin i$ and R_p/R_\star in Table 11 come from combining our results in Table 5 based on the analysis of the *CHEOPS* and *K2* light curves with those from Kosiarek et al. (2021) based on the analysis of two transits of HD 106315 b observed with *Spitzer* at 4.5 μm . We have not used the values of a/R_\star from Kosiarek et al. because they are either inconsistent with the mean stellar density measured independently by several authors shown in Table 4, or not precise enough to be useful. The values of a/R_\star in Table 5 from the analysis of the *CHEOPS* and *K2* are not independent. They are both strongly constrained by the same prior that we placed on ρ_\star for the analysis of both these light curves, so we only used the value of a/R_\star from the analysis of the *CHEOPS* light curve. Where Kosiarek et al. quote asymmetric error bars on a parameter we use the larger of the two error bars. The values from different sources have been combined using the algorithm described in Appendix A. Kosiarek et al. argued that the orbital eccentricity of HD 106315 b is likely to be small based on the observed radial velocities and on stability arguments for the orbits of the two planets in this system. Based on this analysis we fix $e = 0$ for our calculation of the mass and radius of HD 106315 b.

3.6.3 HD 97658 b

Extensive photometry of the transits of HD 97658 b using *Spitzer* and *HST* has been presented by Guo et al. (2020). Their Table 2 seems to imply that they were able to establish a value of $a/R_\star = 26.7 \pm 0.4$ from the analysis of their *HST* light curves. However, this seems unlikely given that these data have poor coverage of the transit, e.g. the egress was not observed at all, so it is unclear to us where this estimate of a/R_\star comes from. It also appears from their table 2 that they assumed for the analysis of the transits that the orbital eccentricity is $e = 0.078$ and that the longitude of periastron is $\omega = 90^\circ$. Again, it is unclear where these estimates come from – previous estimates of ω have very large uncertainties because the eccentricity

Table 11. Improved planet mass and radius estimates. See Section 3.6 for details of the data sources combined to obtain the input values of R_p/R_\star , a/R_\star , and $\sin i$ used here.

| Parameter | Units | Value | Error | Notes |
|---------------|------------------------|--------------|----------------|-------|
| GJ 436 b | | | | |
| P | (d) | 2.643 897 59 | | |
| M_\star | (M_\odot) | 0.445 | ± 0.018 | |
| K | (m s^{-1}) | 17.38 | ± 0.17 | 1 |
| e | | 0.152 | ± 0.009 | 1 |
| $\sin i$ | | 0.998 43 | ± 0.00004 | |
| R_p/R_\star | | 0.082 61 | ± 0.00022 | |
| a/R_\star | | 14.46 | ± 0.09 | |
| R_\star | (R_\odot) | 0.425 | ± 0.006 | |
| M_p | (M_\oplus) | 21.68 | ± 0.63 | |
| R_p | (R_\oplus) | 3.83 | ± 0.06 | |
| g_p | (m s^{-2}) | 14.50 | ± 0.24 | |
| ρ_p | (g cm^{-3}) | 2.12 | ± 0.06 | |
| HD 106315 b | | | | |
| P | (d) | 9.552 11 | | |
| M_\star | (M_\odot) | 1.088 | ± 0.043 | |
| K | (m s^{-1}) | 2.88 | ± 0.85 | 2 |
| R_p/R_\star | | 0.016 86 | ± 0.00041 | |
| a/R_\star | | 15.95 | ± 0.55 | |
| $\sin i$ | | 0.999 31 | ± 0.00013 | |
| R_\star | (R_\odot) | 1.221 | ± 0.045 | |
| M_p | (M_\oplus) | 10.1 | ± 3.0 | |
| R_p | (R_\oplus) | 2.25 | ± 0.10 | |
| g_p | (m s^{-2}) | 19.6 | ± 6.0 | |
| ρ_p | (g cm^{-3}) | 4.9 | ± 1.6 | |
| HD 97658 b | | | | |
| P | (d) | 9.489 3072 | | |
| M_\star | (M_\odot) | 0.752 | ± 0.035 | |
| K | (m s^{-1}) | 2.81 | ± 0.15 | 3 |
| R_p/R_\star | | 0.028 63 | ± 0.00030 | |
| a/R_\star | | 23.69 | ± 0.49 | |
| $\sin i$ | | 0.999 816 | ± 0.000034 | |
| R_\star | (R_\odot) | 0.724 | ± 0.019 | |
| M_p | (M_\oplus) | 7.69 | ± 0.47 | |
| R_p | (R_\oplus) | 2.26 | ± 0.06 | |
| g_p | (m s^{-2}) | 14.7 | ± 1.0 | |
| ρ_p | (g cm^{-3}) | 3.65 | ± 0.33 | |
| GJ 1132 b | | | | |
| P | (d) | 1.628 9289 | | |
| M_\star | (M_\odot) | 0.192 | ± 0.022 | |
| K | (m s^{-1}) | 2.85 | ± 0.34 | 4 |
| R_p/R_\star | | 0.049 01 | ± 0.00054 | |
| a/R_\star | | 16.38 | ± 0.55 | |
| $\sin i$ | | 0.9997 | ± 0.0001 | |
| R_\star | (R_\odot) | 0.205 | ± 0.010 | |
| M_p | (M_\oplus) | 1.74 | ± 0.25 | |
| R_p | (R_\oplus) | 1.10 | ± 0.06 | |
| g_p | (m s^{-2}) | 14.2 | ± 2.0 | |
| ρ_p | (g cm^{-3}) | 7.2 | ± 1.2 | |

Notes. 1: Trifonov et al. (2018). 2: Kosiarek et al. (2021). 3: Guo et al. (2020). 4: Bonfils et al. (2018).

of the orbit is low.¹⁶ Unfortunately, this value of ω maximizes the difference between the value of the mean stellar density inferred from the transit width via Kepler’s law assuming either a circular or eccentric orbit. The results of their radial velocity analysis presented in their table 7 assume that the orbit is circular. Using equation (34)

¹⁶We attempted to contact Xueying Guo via her co-authors but, at the time of writing, we have not obtained clarification of these points.

Table 12. Planet–star radius ratio as a function of wavelength for GJ 1132 b. The flux-weighted mean photon wavelength for each observation and its standard deviation are indicated in the column headed (λ).

| Bandpass | (λ) (nm) | R_p/R_* | Ref. |
|---------------|--------------------|-----------------|------|
| <i>CHEOPS</i> | 787 ± 126 | 0.0494 ± 0.0021 | 1 |
| MEarth | 842 ± 79 | 0.0487 ± 0.0010 | 1 |
| Spitzer | 4442 ± 284 | 0.0492 ± 0.0008 | 2 |
| LDSS3C | 901 ± 90 | 0.0490 ± 0.0010 | 3 |
| Mean | | 0.0490 ± 0.0005 | |
| MEarth | 842 ± 79 | 0.0455 ± 0.0006 | 2 |
| g' | 482 ± 35 | 0.0493 ± 0.0014 | 4 |
| r' | 626 ± 34 | 0.0519 ± 0.0012 | 4 |
| i' | 764 ± 36 | 0.0498 ± 0.0008 | 4 |
| z' | 900 ± 52 | 0.0575 ± 0.0019 | 4 |
| J | 1235 ± 68 | 0.0457 ± 0.0058 | 4 |
| H | 1648 ± 76 | 0.0418 ± 0.0057 | 4 |
| K | 2166 ± 87 | 0.0610 ± 0.0075 | 4 |
| g' | 482 ± 35 | 0.0565 ± 0.0013 | 5 |
| i' | 482 ± 35 | 0.0511 ± 0.0009 | 5 |
| WFC3 | 1366 ± 146 | 0.0495 ± 0.0010 | 6 |
| <i>TESS</i> | 890 ± 107 | 0.0481 ± 0.0010 | 6 |

Notes. 1. This work. 2. Dittmann et al. (2017). 3. Diamond-Lowe et al. (2018). 4. Southworth et al. (2017), GROND. 5. Southworth et al. (2017), PISCO. 6. Mugnai et al. (2021).

from Kipping (2014), the difference is 26 percent, with the value derived for $e = 0$ being larger than the true value if $e > 0$. A full re-analysis of the data in Guo et al. (2020) is beyond the scope of this study so we have decided not to use the results from the analysis of the *HST* and *Spitzer* light curves by Guo et al. in this analysis. However, the results from the radial velocity analysis by Guo et al. are unambiguous so we have followed them in assuming that the orbit is circular and have used the value of K from their table 7.

Four transits of HD 97658 b observed by Dragomir et al. (2013) with the *MOST* satellite provide the following estimates for the transit parameters: $k = 0.0306 \pm 0.0014$, $a/R_* = 24.36^{+0.97}_{-1.1}$, $i = 89^\circ 45^{+0.37}_{-0.42}$. From the analysis of a single transit observed at $4.5\mu\text{m}$ with *Spitzer* by Van Grootel et al. (2014) we obtain the following values: $k = 0.02780^{+0.00075}_{-0.00077}$, $a/R_* = 24.9 \pm 1.4$, $i = 89^\circ 14^{+0.52}_{-0.36}$, where the value of a/R_* has been calculated from the values of D , W , and b in their table 2. We have combined these estimates with the values of k , a/R_* , and i from Table 7 to obtain the values shown in Table 11 using the algorithm described in Appendix A. Where asymmetric error bars are quoted on values we have used the larger value as the standard error estimate. Similarly to the K2 light curve of HD 106315 b, we have not used the value of a/R_* from the analysis of the *TESS* light curve in this calculation because it is not independent of the value from the analysis of the *CHEOPS* light curve – both values are strongly constrained by the same prior on ρ_* . Guo et al. (2020) did not find any strong evidence for features in the transmission spectrum of HD 97658 b so we have ignored any possible wavelength dependence in the planetary radius for the calculations summarized in Table 11.

3.6.4 GJ 1132 b

Measurements of R_p/R_* for GJ 1132 b from various sources are listed in Table 12. We have not used the estimates from Southworth et al. (2017) in our calculations for reasons that will be discussed in Section 5.4. The values of a/R_* and $\sin i$ in Table 11 are the weighted means of the values from the same sources used to calculate

Table 13. List of equation of state (EoS) used in the forward model.

| Layer | Composition | EoS |
|----------|--|---|
| Core | Fe, FeS | Hakim et al. (2018), Fei et al. (2016) |
| Mantle | [Mg,Fe]SiO ₃ , [Mg,Fe]O, [Mg,Fe] ₂ SiO ₄ , [Mg,Fe] ₂ Si ₂ O ₆ | Sotin et al. (2007) |
| Volatile | H ₂ O | Haldemann et al. (2020) |

k calculated using the algorithm described in Appendix A. We have ignored any possible wavelength dependence in the planetary radius for the calculations summarized in Table 11. This point will also be discussed in Section 5.4.

4 CONSTRAINTS ON THE INTERNAL STRUCTURE

We used the retrieval code already employed in the case of TOI-178 (Leleu et al. 2021) to constrain the planetary internal structure. Here, we briefly recall the ingredients of the model and apply it to three of the exoplanets observed with *CHEOPS* during the Early Science observing programme. More details on the code can be found in Leleu et al. (2021).

We use a global Bayesian model to fit the observed properties of the star and planet. The observed properties of the star are its mass, radius, age, effective temperature, and the photospheric abundances [Si/Fe] and [Mg/Fe]. The observed properties of the planet are the planet–star radius ratio, the radial-velocity semi-amplitude, and the orbital period. The hidden planetary properties are the mass of solids (where ‘solids’ refers to the mass of planet not due to H or He gas), the mass fractions of the core, mantle, and water, the mass of the gas envelope, the Si/Fe and Mg/Fe mole ratios in the planetary mantle, the S/Fe mole ratio in the core, and the equilibrium temperature due to irradiation by the star. Then, for any given combination of hidden planetary properties and stellar properties, one can compute the resulting planet–star radius ratio and the radial-velocity semi-amplitude.

The two important ingredients of such a calculation are the physics included in the forward model that is used to calculate the radius of a planet with a given mass and structure, and the prior distribution on the planetary hidden parameters. We assume in the calculations presented below a fully differentiated planet, consisting of a core composed of Fe and S, a mantle composed of Si, Mg, and Fe, a pure water layer, and a gas layer composed of H and He only. The equations of state used for these calculations (Table 13) are taken from Hakim et al. (2018) and Fei et al. (2016) at pressures below 240 GPa, and from Sotin, Grasset & Mocquet (2007) and Haldemann et al. (2020) at higher pressures. The temperature profile is assumed to be adiabatic. For the gas envelope, we use the semi-analytical model of Lopez & Fortney (2014) which provides the thickness of the gas envelope as a function of the gas mass fraction, the equilibrium temperature, the mass and radius of the solid planet, and the age (assumed to be equal to the stellar age).

We assume that the logarithm of the gas-to-solid ratio in the planet has a uniform distribution. The mass of the planet core, the planet mantle, and the mass of water have uniform priors except that the mass fraction of water in the solid planet is limited to a maximum value of 0.5. We assume that the bulk Si/Fe and Mg/Fe mole ratios in the planet is equal to the one in the star. This assumption will not

be valid for planets that have undergone events such as giant impacts that can strongly affect these mole ratios. From the knowledge of the bulk ratio in the planet as well as the core-to-mantle mass ratio, the Si/Fe and Mg/Fe mole ratios in the mantle can be computed analytically. Importantly, the solid and gas part of the planet are computed independently, which means that we do not include the compression effect of the planetary envelope on its core. Including the feedback from the gas envelope on to the planetary core is left for future work, and is well justified *a posteriori* given the small value of the gas envelope.

5 DISCUSSION

In this section, we compare the results from Section 3 to the results from previous studies of these planets, and discuss the implication of all these results and the analysis in Section 4 for our understanding of these planetary systems and the performance of CHEOPS compared to other instrumentation.

5.1 GJ 436 b

The transit depth for GJ 436 b that we have measured using CHEOPS (7000 ± 180 ppm) is consistent with the weighted mean value 6800 ± 30 ppm from 8 transits observed with *Spitzer* at 3 wavelengths by Lanotte et al. (2014). The results in their table 8 show that this weighted mean is dominated by a single observation at $3.6 \mu\text{m}$ with an uncertainty of 40 ppm cf. a typical uncertainty of 100 ppm for the other transits. Thus, the precision in the transit depth measurement we have achieved from 3 visits covering \sim half of two transits is about half that achieved with a typical observation of a single visit with *Spitzer*. This is a consequence of the larger aperture of the *Spitzer* Space Telescope cf. CHEOPS, the gaps in the CHEOPS observations, and the red colour of this M-type star favouring observations at infrared wavelengths.

Although the precision of the transit depth measurement by Lanotte et al. is 6 times better than our measurement using CHEOPS, the precision in the planet radius measurement using all available data in Table 11 ($3.85 \pm 0.06 R_{\oplus}$) is only a factor of two better than the value based on CHEOPS data only in Table 3 ($4.00 \pm 0.13 R_{\oplus}$). This is because the uncertainty in the stellar radius is now the dominant source of uncertainty in the calculation of the planet's radius. The high cadence of the CHEOPS observations helps to reduce this uncertainty because this allows for an accurate measurement of the transit shape and width, from which we can infer an accurate measurement of the mean stellar density.

GJ 436 is a slowly rotating star ($P_{\text{rot}} \approx 50$ d) that shows little intrinsic variability at optical wavelengths ($\lesssim 0.5$ per cent, Knutson et al. 2011; Lothringer et al. 2018). We might then expect changes in flux at the rate $df/dt \sim 0.0001 \text{ d}^{-1}$ if this intrinsic variability is due to modulation in the visibility of long-lived star-spots by rotation. The observed values of df/dt in Table 3 show variability at a rate several times larger than this estimate over a time-scale ≈ 8 h. If there is variability with an amplitude ≈ 0.002 due to short-lived bright or dark regions in the photosphere of GJ 436 that are not occulted by the planet then there will be a systematic error ≈ 0.1 per cent in R_p/R_* .

Our internal structure models (see fig. D1 of the supplementary online material) suggest that GJ 436b has a significant gas envelope, with a mass between 0.67 and $1.73 M_{\oplus}$ (all given values are the 5 or 95 per cent quantiles). The mass fraction of water in the planet is essentially unconstrained (comprised between 0.08 and 0.41 of the mass of the core).

5.2 HD 106315 b

The value of the orbital period derived in Section 3.5.2 is significantly different from the value given by Kosiarek et al. (2021) based on their analysis of two transits observed with *Spitzer* and the published time of minimum based on *K2* data (9.55287 ± 0.00021 d). The time of conjunction given by Kosiarek et al. for the transit observed with *Spitzer* on the date 2017-09-10 is clearly discrepant by over an hour. This discrepancy introduces a systematic error in the predicted time of mid-transit of almost 7 h using their linear ephemeris for the observing date 2025 discussed by Kosiarek et al.. The uncertainty on the time of mid-transit for observations in 2025 with our updated linear ephemeris is now less than 10 min.

The precision in the planet radius we derive from two transits of HD 106315 b observed with CHEOPS is very similar to that obtained from about 80 d of observations with *K2* covering 6 transits. Although *Kepler* has a larger aperture than CHEOPS and observed more transits during the *K2* mission, 3 of the transits contain only 1 or 2 valid observations and all the transits are affected by missing data points. As a result, there are only 20 valid *K2* observations during the transit of HD 106315 b. These data are also affected by inaccuracies in the correction for spurious flux variations due to the spacecraft motion. There is very good agreement between the transit depth measurements from the two instruments. CHEOPS is very well suited to observations of bright, isolated stars like HD 106315, and the very low levels of instrumental noise for such targets allows for accurate and precise characterization of broad, shallow transits such as those produced by HD 106315 b.

In term of internal structure, the internal structure modelling (see fig. D2 of the supplementary online material) shows that HD 106315b has a gas envelope smaller than $10^{-3} M_{\oplus}$ (all given values are the 5 or 95 per cent quantiles), a large mass fraction of water (comprised between 0.04 and 0.47 of the mass of the core, with some preference for large water fraction), and an iron mass fraction in the planet smaller than for the Earth. Both explains why the density of the planet is smaller than the one of the Earth, and of a pure silicate sphere (see Fig. 11).

5.3 HD 97658 b

HD 97658 is the brightest target observed during the Early Science programme so any systematic noise sources not removed by the DRP or our decorrelation techniques are most likely to be seen in the light curve of this star. We experimented with using a Gaussian process to model correlated noise in the analysis of this visit using the kernel described in Section 2.8. This requires some thought about the use of priors on the hyper-parameters of the noise model to avoid the transit signal being modelled as noise with an amplitude $\approx D$ correlated on a time-scale $\approx W$. To avoid this problem we use an intermediate step where the transit parameters D , W , T_0 , etc. are fixed at the values obtained in the least-squares fit and we use EMCEE to sample the joint PPD of the decorrelation parameters and the hyper-parameters of the GP, S_0 , and ω_0 (Q is fixed at the value $1/\sqrt{2}$). We find that the convergence of the sampler is improved if we also set a prior on the parameter, c , the mean flux level out of transit. We set a Gaussian prior on c with the same mean as the flux values out of transit and a width 4 times the standard error on the mean on these values. Based on the results from this intermediate step, we set Gaussian priors on S_0 and ω_0 centred on the mean of the values sampled from the PPD and with standard deviation equal to twice the standard deviation of the sampled PPD. This enables us explore the correlations between the transit parameters and the hyper-parameters of the noise model

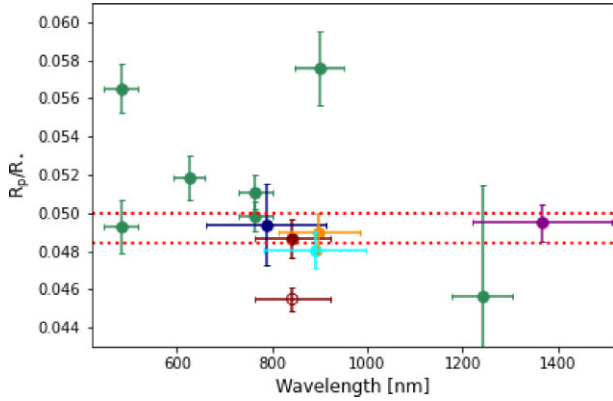


Figure 12. Planet–star radius ratio as a function of wavelength for GJ 1132 b. Points are colour coded as follows: blue – *CHEOPS*, red – M-*Earth*, orange – Diamond-Lowe et al. (2018), green – Southworth et al. (2017), magenta – WFC3, cyan – TESS. The radius ratio obtained from *Spitzer* observations at 4.5 μm is indicated with dotted lines. The planet–star radius ratio measured using M-*Earth* data by Dittmann et al. (2017) is plotted with an open circle symbol.

without exploring unreasonable parts of the parameter space, e.g. solutions where the light curve contains no transit. The results from this analysis are indistinguishable from the results in Table 7, e.g. $D = 0.000\,822 \pm 0.000\,019$, $W = 0.012\,442 \pm 0.000\,054$. The amplitude of correlated noise estimated from the standard deviation of the Gaussian process, $\sigma_{\text{GP}} = \sqrt{S_0 \omega_0 Q}$, is 25 ± 35 ppm based on this analysis. The value of the Bayesian information criterion (BIC) for the best fit including a Gaussian process is slightly lower than that without a GP, but the difference is less than 10 so the evidence that the GP is fitting a real signal is not strong.

The precision of our transit depth measurement from a single visit with *CHEOPS* improves on the measurement based on two transits observed with TESS by a factor 2. There is good agreement in the transit depth measured by the two instruments. The precision of the planet–star radius ratio from the combined measurement is less than 1 per cent. The error in the planet radius, R_p , is now dominated by the uncertainty in the stellar radius (Table 11).

The internal structure of HD 97658b (see fig. D3 of the supplementary online material) is comparable to the one of HD 106315b, with however a larger mass of the gas envelope (smaller than $\sim 10^{-2} M_{\oplus}$), a similar water mass fraction (between 0.06 and 0.48 of the mass of the core), and a similar iron mass fraction in the planet. Interestingly, the posterior distribution of the water mass fraction peaks at large values compared to the two planets discussed above (in particular GJ 436 b).

5.4 GJ 1132 b

Some care is needed when comparing values of R_p/R_* as a function of wavelength for observations obtained through broad-band filters because GJ 1132 is an M4.5V-type star that has a very red spectrum with strong features due to molecular absorption. These features of the stellar spectral energy distribution should be accounted for when calculating the effective wavelength and bandwidth for observations obtained with different instruments. For the results shown in Fig. 12 and given in Table 12 we used a synthetic spectrum from the BT-Settl grid of models (Allard 2014) to calculate the effective wavelength and bandwidth for each observation from the flux-weighted mean photon wavelength and its standard error. The M-*Earth* instrument uses a long-pass filter with a cutoff wavelength of 715 nm. We

assumed that M-*Earth* has the same instrument response as *CHEOPS* for wavelengths redder than this cutoff and 0 response otherwise. For the LDSS3C instrument used by Diamond-Lowe et al. (2018) we assume a uniform response over the wavelength range 710–1030 nm.

From Fig. 12 it is clear that there is significant disagreement between the value of R_p/R_* observed in the z' bandpass by Southworth et al. (2017) and the values obtained using *CHEOPS*, M-*Earth*, TESS, and LDSS3C, despite the substantial overlap in the bandpass for each instrument. Light curves of GJ 1132 from ground-based instruments using broad-band filters will be affected by systematic errors because these observations require the use of nearby stars to monitor the atmospheric transparency and extinction. These comparison stars typically have very different spectra to GJ 1132, so they are not affected by changes in observing conditions in the same way as GJ 1132. This is particularly true for observations at infrared wavelengths that are affected by variable water absorption bands. We conclude that the large radius for GJ 1132 b observed by Southworth et al. in the z' is not strong evidence for an extended atmosphere on this planet.

In the case of the M-*Earth* data we were able to account for the systematic noise correlated with airmass because there is a large amount of data available for this star obtained over many nights. The data from the LDSS3C instrument are not affected by this effect because the extinction correction was done in multiple narrow pass bands. There is excellent agreement between the values of R_p/R_* and other transit parameters measured using these instruments and with the values derived using extensive data from *Spitzer* at 4.5 μm . This gives us some reassurance that *CHEOPS* data analysed using PYCHEOPS can provide accurate and precise measurements for the properties of transiting planets, even in cases such as this where there is poor coverage of the individual transits, the field of observation is crowded, and the target is fainter than the design specification of the instrument. It should be noted that this is partly due to a well-determined mass–density and mass–absolute-magnitude relations for stars with masses $\approx 0.18 M_{\odot}$. This demonstrates the importance of having a good understanding the host star for accurate characterization of exoplanet systems.

The focus of the study by Swain et al. (2021) using observations of GJ 1132 b with the WFC3 instrument on *HST* was the detection and interpretation of subtle features in the transmission spectrum over the wavelength range 1.13–1.64 μm . That study does not report all the transit parameters derived from their analysis of the ‘white light’ light curve produced by combining the data at all observed wavelengths. The time of mid-transit is reported in their table 1 with ‘MJD’ in the units column. The value given has the wrong number of digits for a modified Julian date and is 0.5 d less than the time of mid-transit from Southworth et al. (2017) quoted as a prior in the same table. We assume that this time of mid-transit is actually given as $\text{BJD}_{\text{TDB}} - 0.5$. In that case, the offset of this time of mid-transit from the value predicted by our updated linear ephemeris is -118 ± 18 s, i.e. significantly earlier than expected. There is some ambiguity here as it is unclear what time-scale has been used for the value given in their table 1. Swain et al. state that they derive the key parameter R_p/R_* from the white-light data but do not quote the result. It appears that the value of the parameter R_*/a was fixed in their analysis although the value selected is not given. A fixed value for the orbital semimajor axis, a , is provided in their table 1 but it is unclear why since this parameter has a negligible effect on the shape and depth of the transit, unless it is used indirectly with some other parameter to infer R_*/a . The value of the orbital inclination is quoted in their table 1 as $i = 87:3577$ with upper and lower limits of $0:0430105$ and $0:044457$, respectively. We take this to mean that they

have derived a value $i = 87:358 \pm 0:044$. This value is marginally consistent with the average value $i = 88:62 \pm 0:30$ derived from the four data sets used to determine the mass and radius of the planet in Table 11.

During the preparation of this manuscript, Mugnai et al. (2021) published an analysis of the same *HST* data used by Swain et al. (2021) using two different methods. In contrast to the results from Swain et al. and Mugnai et al. found no evidence for any molecular signatures in the wavelength range covered by the WFC3 instrument. This study was published subsequent to the analysis presented in Sections 3.6 and 4. We have not updated the analysis in those sections because the planet radius derived from their ‘white-light’ light curves is very close to the value used in our analysis. There is also very good agreement between the planet–star radius ratio obtained by Mugnai et al. from their analysis of the *TESS* light curve and the value we have obtained from the analysis of the *CHEOPS* and MEarth light curves, as can be seen from the values listed in Table 12 and from Fig. 12.

The internal structure models (see fig. D4 of the supplementary online material) indicate that the planet is a bare dry core. The gas fraction is negligible and the water mass fraction could be up to 27 per cent. The mass fraction of the iron core ranges between 2 and 35 per cent, with a small fraction of sulphur in it. All these values are similar to some extent to Earth values, so the planet could be pictured as a very hot (massive) Earth analogue. This scenario is consistent with the lack of any detected spectral features in the transmission spectrum of GJ 1132 b.

6 CONCLUSIONS

We have used observations of stars observed during the Early Science programme to demonstrate that *CHEOPS* data can be analysed straightforwardly using PYCHEOPS in order to determine accurate and precise transit parameters for transiting extrasolar planets. The performance of *CHEOPS* is comparable to or better than other space-based instrumentation despite its modest aperture because of the very low levels of instrumental noise by design for this instrument. Compared to *K2*, *MOST* and *Spitzer*, *CHEOPS* also has the distinct advantage that it is currently operational. *CHEOPS* also has the flexibility to schedule observations to coincide with the transits and eclipses of known exoplanets, or to search for suspected transiting exoplanets in multiplanets systems (Bonfanti et al. 2021). PYCHEOPS has already been used for the analysis of *CHEOPS* data in several studies (Lendl et al. 2020; Benz et al. 2021; Bonfanti et al. 2021; Borsato et al. 2021; Leleu et al. 2021; Van Grootel et al. 2021). *CHEOPS* observations are on-going so we can look forward to the publication of many exciting results from the partnership of this unique instrument and the PYCHEOPS software.

ACKNOWLEDGEMENTS

CHEOPS is an ESA mission in partnership with Switzerland with important contributions to the payload and the ground segment from Austria, Belgium, France, Germany, Hungary, Italy, Portugal, Spain, Sweden, and the United Kingdom. The *CHEOPS* Consortium would like to gratefully acknowledge the support received by all the agencies, offices, universities, and industries involved. Their flexibility and willingness to explore new approaches were essential to the success of this mission.

PM acknowledges support from Science and Technology Facilities Council (STFC) research grant number ST/M001040/1. This project has received funding from the European Research Council (ERC)

under the European Union’s Horizon 2020 research and innovation programme (project FOUR ACES; grant agreement No 724427). This project has been carried out in the frame of the National Centre for Competence in Research PlanetS supported by the Swiss National Science Foundation (SNSF). ACC and TW acknowledge support from STFC consolidated grant number ST/R000824/1. YA and MJH acknowledge the support of the Swiss National Fund under grant 200020_172746. SH gratefully acknowledges Centre National d’Études Spatiales (CNES) funding through the grant 837319. SGS acknowledge support from Fundação para a Ciência e a Tecnologia through FCT contract nr. CEECIND/00826/2018 and POPH/FSE (EC). The Belgian participation to *CHEOPS* has been supported by the Belgian Federal Science Policy Office (BELSPO) in the framework of the PRODEX Program, and by the University of Liège through an ARC grant for Concerted Research Actions financed by the Wallonia-Brussels Federation. We acknowledge support from the Spanish Ministry of Science and Innovation and the European Regional Development Fund through grants ESP2016-80435-C2-1-R, ESP2016-80435-C2-2-R, PGC2018-098153-B-C33, PGC2018-098153-B-C31, ESP2017-87676-C5-1-R, MDM-2017-0737 Unidad de Excelencia ‘María de Maeztu’- Centro de Astrobiología (INTA-CSIC), as well as the support of the Generalitat de Catalunya/CERCA programme. The MOC activities have been supported by the European Space Agency (ESA) contract No. 4000124370. SCCB acknowledges support from FCT through FCT contracts nr. IF/01312/2014/CP1215/CT0004. XB, SC, DG, MF, and JL acknowledge their role as ESA-appointed *CHEOPS* science team members. ABr was supported by the SNSA. This project was supported by the CNES. This work was supported by FCT through national funds and by the European Regional Development Fund (FEDER) through COMPETE2020 - Programa Operacional Competitividade e Internacionalização by these grants: UID/FIS/04434/2019; UIDB/04434/2020; UIDP/04434/2020; PTDC/FIS-AST/32113/2017 and POCI-01-0145-FEDER-032113; PTDC/FIS-AST/28953/2017 and POCI-01-0145-FEDER-028953; PTDC/FIS-AST/28987/2017 and POCI-01-0145-FEDER-028987. ODSO is supported in the form of work contract (DL 57/2016/CP1364/CT0004) funded by national funds through FCT. BOD acknowledges support from the Swiss National Science Foundation (PP00P2-190080). MF and CMP gratefully acknowledge the support of the Swedish National Space Agency (DNR 65/19, 174/18). DG gratefully acknowledges financial support from the CRT Foundation under Grant No. 2018.2323 ‘Gaseous rocky? Unveiling the nature of small worlds’. MG is an F.R.S.-FNRS Senior Research Associate. This work was granted access to the HPC resources of MesoPSL financed by the Region Ile de France and the project Equip@Meso (reference ANR-10-EQPX-29-01) of the programme Investissements d’Avenir supervised by the Agence Nationale pour la Recherche. This work was also partially supported by a grant from the Simons Foundation (PI Queloz, grant number 327127). Acknowledges support from the Spanish Ministry of Science and Innovation and the European Regional Development Fund through grant PGC2018-098153-B-C33, as well as the support of the Generalitat de Catalunya/CERCA programme. This project has been supported by the Hungarian National Research, Development and Innovation Office (NKFIH) grants GINOP-2.3.2-15-2016-00003, K-119517, K-125015, and the City of Szombathely under Agreement No. 67.177-21/2016. VVG is an F.R.S.-FNRS Research Associate. This research was supported in part by the National Science Foundation under Grant No. NSF PHY-1748958. MS acknowledges supported from STFC, grant number ST/T506175/1. The authors acknowledge support

from the Swiss NCCR PlanetS and the Swiss National Science Foundation. YA acknowledges the support of the Swiss National Fund under grant 200020_172746. GPI, VNa, GSs, IPa, LBo, and RRa acknowledge the funding support from Italian Space Agency (ASI) regulated by ‘Accordo ASI-INAF n. 2013-016-R.0 del 9 luglio 2013 e integrazione del 9 luglio 2015 CHEOPS Fasi A/B/C’. This publication makes use of data products from the Two Micron All Sky Survey, which is a joint project of the University of Massachusetts and the Infrared Processing and Analysis Center/California Institute of Technology, funded by the National Aeronautics and Space Administration and the National Science Foundation.

This work has made use of data from the European Space Agency (ESA) mission *Gaia* (<https://www.cosmos.esa.int/gaia>), processed by the *Gaia* Data Processing and Analysis Consortium (DPAC, <https://www.cosmos.esa.int/web/gaia/dpac/consortium>). Funding for the DPAC has been provided by national institutions, in particular the institutions participating in the *Gaia* Multilateral Agreement. KGI is the ESA CHEOPS Project Scientist and is responsible for the ESA CHEOPS Guest Observers Programme. She does not participate in, or contribute to, the definition of the Guaranteed Time Programme of the CHEOPS mission through which observations described in this paper have been taken, nor to any aspect of target selection for the programme. This research has made use of the SIMBAD database, operated at CDS, Strasbourg, France Based on observations made with ESO Telescopes at the La Silla Paranal Observatory under programme IDs 191.C-0873 (GJ 1132), 198.C-0838 (GJ 1132), 198.C-0169 (HD 106315), and 098.C-0304 (HD 106315). This publication makes use of The Data & Analysis Center for Exoplanets (DACE), which is a facility based at the University of Geneva (CH) dedicated to extrasolar planets data visualization, exchange and analysis. DACE is a platform of the Swiss National Centre of Competence in Research (NCCR) PlanetS, federating the Swiss expertise in Exoplanet research. The DACE platform is available at <https://dace.unige.ch>. LD is an F.R.S.-FNRS Postdoctoral Researcher. The Belgian participation to CHEOPS has been supported by the Belgian Federal Science Policy Office (BELSPO) in the framework of the PRODEX Program, and by the University of Liège through an ARC grant for Concerted Research Actions financed by the Wallonia-Brussels Federation. A.De. acknowledges support from the European Research Council (ERC) under the European Union’s Horizon 2020 research and innovation programme (project FOUR ACES, grant agreement No. 724427), and from the National Centre for Competence in Research ‘PlanetS’ supported by the Swiss National Science Foundation (SNSF).

DATA AVAILABILITY

The data underlying this article are available in the CHEOPS mission archive (<https://cheops.unige.ch/archive-browser/>) and from the Vizier data base of astronomical catalogues at the Centre de Données astronomiques de Strasbourg (<http://cds.u-strasbg.fr/>).

REFERENCES

- Aigrain S., Hodgkin S. T., Irwin M. J., Lewis J. R., Roberts S. J., 2015, *MNRAS*, 447, 2880
- Akinsanmi B., Oshagh M., Santos N., Barros S., 2018, *A&A*, 609, A21
- Akinsanmi B., Barros S. C. C., Santos N. C., Correia A. C. M., Maxted P. F. L., Boué G., Laskar J., 2019, *A&A*, 621, A117
- Allard F., 2014, in Booth M., Matthews B. C., Graham J. R., eds, Proc. IAU Symp. 299, Exploring the Formation and Evolution of Planetary Systems. Kluwer, Dordrecht, p. 271
- Allard F., Homeier D., Freytag B., 2011, in Johns-Krull C., Browning M. K., West A. A., eds, ASP Conf. Ser. Vol. 448, 16th Cambridge Workshop on Cool Stars, Stellar Systems, and the Sun. p. Astron. Soc. Pac., San Francisco, p. 91
- Anderson D. R. et al., 2011, *ApJ*, 726, L19
- Antoniadis-Karnavas A., Sousa S. G., Delgado-Mena E., Santos N. C., Teixeira G. D. C., Neves V., 2020, *A&A*, 636, A9
- Asplund M., Grevesse N., Sauval A. J., Scott P., 2009, *ARA&A*, 47, 481
- Baglin A., Auvergne M., Barge P., Deleuil M., Michel E., CoRoT Exoplanet Science Team, 2009, , Proc. IAU Symp. 253, Transiting Planets. Cambridge Univ. Press, Cambridge, p.71
- Bakos G. Á. et al., 2007, *ApJ*, 656, 552
- Baraffe I., Homeier D., Allard F., Chabrier G., 2015, *A&A*, 577, A42
- Barros S. C. C. et al., 2017, *A&A*, 608, A25
- Beaulieu J.-P. et al., 2011, *ApJ*, 731, 16
- Benedict G. F. et al., 2016, *AJ*, 152, 141
- Benz W., Ehrenreich D., Isaak K., 2018, Deeg H. J., Belmonte J. A., eds, Handbook of Exoplanets. Springer International Publishing, Cham, p. 84
- Benz W. et al., 2021, *Exp. Astron.*, 51, 109
- Berta-Thompson Z. K. et al., 2015, *Nature*, 527, 204
- Blackwell D. E., Shallis M. J., 1977, *MNRAS*, 180, 177
- Bonfanti A., Ortolani S., Piotto G., Nascimbeni V., 2015, *A&A*, 575, A18
- Bonfanti A., Ortolani S., Nascimbeni V., 2016, *A&A*, 585, A5
- Bonfanti A. et al., 2021, *A&A*, 646, A157
- Bonfils X. et al., 2018, *A&A*, 618, A142
- Borsato L. et al., 2021, *MNRAS*, 506, 3810
- Borucki W. J. et al., 2010, *Science*, 327, 977
- Bourrier V. et al., 2018, *Nature*, 553, 477
- Brewer J. M., Fischer D. A., Valenti J. A., Piskunov N., 2016, *ApJS*, 225, 32
- Butler R. P., Vogt S. S., Marcy G. W., Fischer D. A., Wright J. T., Henry G. W., Laughlin G., Lissauer J. J., 2004, *ApJ*, 617, 580
- Carter J. A., Yee J. C., Eastman J., Gaudi B. S., Winn J. N., 2008, *ApJ*, 689, 499
- Casewell S. L. et al., 2018, *MNRAS*, 481, 1897
- Castelli F., Kurucz R. L., 2003, in Piskunov N., Weiss W. W., Gray D. F., eds, Proc. IAU Symp. 210, Modelling of Stellar Atmospheres. Kluwer, Dordrecht, p. A20
- Charbonneau D. et al., 2009, *Nature*, 462, 891
- Chaturvedi P., Sharma R., Chakraborty A., Anandarao B. G., Prasad N. J. S. S. V., 2018, *AJ*, 156, 27
- Claret A., 2019, *Res. Notes Am. Astron. Soc.*, 3, 17
- Crossfield I. J. M. et al., 2017, *AJ*, 153, 255
- Delrez L. et al., 2018, in Marshall H. K., Spyromilio J., eds, Proc. SPIE Conf. Ser. Vol. 10700, Ground-based and Airborne Telescopes VII. SPIE, Bellingham, p. 107001I
- Delrez L. et al., 2021, *Nat. Astron.*, 5, 775
- Diamond-Lowe H., Berta-Thompson Z., Charbonneau D., Kempton E. M.-R., 2018, *AJ*, 156, 42
- Dickey J. M., Lientz B., 1970, *Ann. Math. Statist.*, 41, 214
- Dittmann J. A., Irwin J. M., Charbonneau D., Berta-Thompson Z. K., Newton E. R., 2017, *AJ*, 154, 142
- dos Santos L. A. et al., 2019, *A&A*, 629, A47
- Dragomir D. et al., 2013, *ApJ*, 772, L2
- Eastman J., Gaudi B. S., Agol E., 2013, *PASP*, 125, 83
- Ehrenreich D. et al., 2015, *Nature*, 522, 459
- Fei Y., Murphy C., Shibasaki Y., Shahar A., Huang H., 2016, *Geophys. Res. Lett.*, 43, 6837
- Foreman-Mackey D., 2016, *J. Open Source Softw.*, 1, 24
- Foreman-Mackey D., 2018, *Res. Notes Am. Astron. Soc.*, 2, 31
- Foreman-Mackey D., Hogg D. W., Lang D., Goodman J., 2013, *PASP*, 125, 306
- Foreman-Mackey D., Agol E., Ambikasaran S., Angus R., 2017, *AJ*, 154, 220
- Fridlund M. et al., 2017, *A&A*, 604, A16
- Gaia Collaboration, 2018, *A&A*, 616, A1
- Gaia Collaboration, 2021, *A&A*, 649, A1

- Gardner J. P. et al., 2006, *Space Sci. Rev.*, 123, 485
- Gill S. et al., 2019, *A&A*, 626, A119
- Gillon M. et al., 2007, *A&A*, 472, L13
- Girard T. M. et al., 2011, *AJ*, 142, 15
- Goodman J., Weare J., 2010, *Commun. Appl. Math. Comput. Sci.*, 5, 65
- Guo X. et al., 2020, *AJ*, 159, 239
- Hakim K., Rivoldini A., Van Hoolst T., Cottenier S., Jaeken J., Chust T., Steinle-Neumann G., 2018, *Icarus*, 313, 61
- Haldemann J., Alibert Y., Mordasini C., Benz W., 2020, *A&A*, 643, A105
- Harris C. R. et al., 2020, *Nature*, 585, 357
- Hartman J. D. et al., 2015, *AJ*, 149, 166
- Henry G. W., Howard A. W., Marcy G. W., Fischer D. A., Johnson J. A., 2011, preprint([arXiv:1109.2549](https://arxiv.org/abs/1109.2549))
- Howard A. W. et al., 2011, *ApJ*, 730, 10
- Howell S. B. et al., 2014, *PASP*, 126, 398
- Hoyer S., Guterman P., Demangeon O., Sousa S. G., Deleuil M., Meunier J. C., Benz W., 2020, *A&A*, 635, A24
- Hunter J. D., 2007, *Comput. Sci. Eng.*, 9, 90
- Kallinger T. et al., 2014, *A&A*, 570, A41
- Kipping D. M., 2014, *MNRAS*, 440, 2164
- Knutson H. A. et al., 2011, *ApJ*, 735, 27
- Knutson H. A., Benneke B., Deming D., Homeier D., 2014, *Nature*, 505, 66
- Kosiarek M. R. et al., 2021, *AJ*, 161, 47
- Kulow J. R., France K., Linsky J., Loyd R. O. P., 2014, *ApJ*, 786, 132
- Kurucz R. L., 2013, Astrophysics Source Code Library, recod (ascl:1303.024)
- Lacy C. H. S., 1992, *AJ*, 104, 2213
- Lam S. K., Pitrou A., Seibert S., 2015, in Proc. 2nd Workshop on the LLVM Compiler Infrastructure in HPC. Association for Computing Machinery, New York, p. 1
- Lanotte A. A. et al., 2014, *A&A*, 572, A73
- Lavie B. et al., 2017, *A&A*, 605, L7
- Leleu A. et al., 2021, *A&A*, 649, A26
- Lendl M. et al., 2020, *A&A*, 643, A94
- Lindegren L. et al., 2021, *A&A*, 649, A4
- Lopez E. D., Fortney J. J., 2014, *ApJ*, 792, 1
- Lothringer J. D. et al., 2018, *AJ*, 155, 66
- Luger R., Foreman-Mackey D., Hogg D. W., 2017, *Res. Notes Am. Astron. Soc.*, 1, 7
- Magic Z., Chiavassa A., Collet R., Asplund M., 2015, *A&A*, 573, A90
- Mamajek E. E. et al., 2015, preprint ([arXiv:1510.07674](https://arxiv.org/abs/1510.07674))
- Maness H. L., Marcy G. W., Ford E. B., Hauschildt P. H., Shreve A. T., Basri G. B., Butler R. P., Vogt S. S., 2007, *PASP*, 119, 90
- Marconi A. et al., 2021, *The Messenger*, 182, 27
- Marigo P. et al., 2017, *ApJ*, 835, 77
- Markley F. L., 1995, *Celest. Mech. Dyn. Astron.*, 63, 101
- Maxted P. F. L., 2016, *A&A*, 591, A111
- Maxted P. F. L., 2018, *A&A*, 616, A39
- Maxted P. F. L., Gill S., 2019, *A&A*, 622, A33
- Morales J. C. et al., 2009, *ApJ*, 691, 1400
- Morello G., Waldmann I. P., Tinetti G., Howarth I. D., Micela G., Allard F., 2015, *ApJ*, 802, 117
- Morris B. M. et al., 2021, *A&A*, 653, A173
- Mortier A., Santos N. C., Sousa S. G., Fernandes J. M., Adibekyan V. Z., Delgado Mena E., Montalto M., Israelian G., 2013, *A&A*, 558, A106
- Moya A., Zuccarino F., Chaplin W. J., Davies G. R., 2018, *ApJS*, 237, 21
- Mugnai L. V. et al., 2021, *AJ*, 161, 284
- Newville M. et al., 2020, *lmfit/lmfit-py* 1.0.1. Zenodo, available at <https://doi.org/10.5281/zenodo.3814709>
- Pepper J., Stassun K. G., Gaudi B. S., 2018, KELT: The Kilodegree Extremely Little Telescope, a Survey for Exoplanets Transiting Bright, Hot Stars. Springer Science and Business Media LLC, p. 128
- Piskunov N. E., Kupka F., Ryabchikova T. A., Weiss W. W., Jeffery C. S., 1995, *A&AS*, 112, 525
- Piskunov N., Valenti J. A., 2017, *A&A*, 597, A16
- Pollacco D. L. et al., 2006, *PASP*, 118, 1407
- Pont F., Gilliland R. L., Knutson H., Holman M., Charbonneau D., 2009, *MNRAS*, 393, L6
- Rabus M. et al., 2019, *MNRAS*, 484, 2674
- Rando N. et al., 2020, in Lystrup M., Perrin M. D., eds, Proc. SPIE Conf. Ser. Vol. 11443, Space Telescopes and Instrumentation 2020: Optical, Infrared, and Millimeter Wave. SPIE, Bellingham, p. 1144314
- Rauer H. et al., 2014, *Exp. Astron.*, 38, 249
- Ribas I., Font-Ribera A., Beaulieu J.-P., 2008, *ApJ*, 677, L59
- Ricker G. R. et al., 2014, in Oschmann J. M., Jr., Clampin M., Fazio G. G., MacEwen H. A., eds, Proc. SPIE Conf. Ser. Vol. 9143, Space Telescopes and Instrumentation 2014: Optical, Infrared, and Millimeter Wave. SPIE, Bellingham, p. 914320
- Rodriguez J. E. et al., 2017, *AJ*, 153, 256
- Santos N. C. et al., 2013, *A&A*, 556, A150
- Schweitzer A. et al., 2019, *A&A*, 625, A68
- Scuflaire R., Théado S., Montalbán J., Miglio A., Bourge P.-O., Godart M., Thoul A., Noels A., 2008, *Ap&SS*, 316, 83
- Seager S., Mallén-Ornelas G., 2003, *ApJ*, 585, 1038
- Short D. R., Welsh W. F., Orosz J. A., Windmiller G., Maxted P. F. L., 2019, *Res. Notes Am. Astron. Soc.*, 3, 117
- Sivia D. S., Skilling J., 2006, Data Analysis - A Bayesian Tutorial, 2nd edn. Oxford Science Publications, Oxford Univ. Press, Oxford
- Skrutskie M. F. et al., 2006, *AJ*, 131, 1163
- Snellen I. A. G. et al., 2012, in Stepp L. M., Gilmozzi R., Hall J. H., eds, Proc. SPIE Conf. Ser. Vol. 8444, Ground-based and Airborne Telescopes IV. SPIE, Bellingham, p. 84440I
- Sotin C., Grasset O., Mocquet A., 2007, *Icarus*, 191, 337
- Sousa S. G. et al., 2018, *A&A*, 620, A58
- Sousa S. G., 2014, ARES + MOOG: A Practical Overview of an Equivalent Width (EW) Method to Derive Stellar Parameters. Springer International Publishing, Cham, p. 297
- Southworth J., 2011, *MNRAS*, 417, 2166
- Southworth J., Wheatley P. J., Sams G., 2007, *MNRAS*, 379, L11
- Southworth J., Mancini L., Madhusudhan N., Mollière P., Ciceri S., Henning T., 2017, *AJ*, 153, 191
- Sulis S., Lendl M., Hofmeister S., Veronig A., Fossati L., Cubillos P., Van Grootel V., 2020, *A&A*, 636, A70
- Swain M. R. et al., 2021, *AJ*, 161, 213
- Swayne M. I. et al., 2021, *MNRAS*, 506, 306
- Terrier R. C., Fleming S. W., Mahadevan S., Deshpande R., Feiden G. A., Bender C. F., Ramsey L. W., 2012, *ApJ*, 760, L9
- The Astropy Collaboration, 2018, *AJ*, 156, 123
- Tinetti G. et al., 2018, *Exp. Astron.*, 46, 135
- Trifonov T. et al., 2018, *A&A*, 609, A117
- Trotta R., 2007, *MNRAS*, 378, 72
- Van Grootel V. et al., 2014, *ApJ*, 786, 2
- Van Grootel V. et al., 2021, *A&A*, 650, A205
- Virtanen P. et al., 2020, *Nat. Methods*, 17, 261
- von Boetticher A. et al., 2019, *A&A*, 625, A150
- von Braun K. et al., 2012, *ApJ*, 753, 171
- Wright E. L. et al., 2010, *AJ*, 140, 1868
- Zeng L., Sasselov D. D., Jacobsen S. B., 2016, *ApJ*, 819, 127

SUPPORTING INFORMATION

Supplementary data are available at [MNRAS](https://www.mnras.org) online.

Appendix B. Power Spectral Density of the Residuals.

Appendix C. Trends in the Cheops Data as a Function of Spacecraft Roll Angle.

Appendix D. Internal Structure Parameters.

Please note: Oxford University Press is not responsible for the content or functionality of any supporting materials supplied by the authors. Any queries (other than missing material) should be directed to the corresponding author for the article.

APPENDIX A: MEAN AND ERROR ESTIMATES FOR QUANTITIES THAT MAY BE AFFECTED BY SYSTEMATIC ERRORS

Where we have multiple estimates for a stellar or planetary parameter that may be affected by systematic errors, we assume that the systematic error on all these estimates has the same value, σ_{sys} . Note that σ_{sys} may also be used to characterize the variance due to interesting astrophysical signals, e.g. changes in planet radius with wavelength or transit timing variations. The log-likelihood to obtain the observed measurements $\mathbf{y} = \{y_i \pm \sigma_i, i = 1, \dots, N\}$ is then

$$\ln p(\mathbf{y} | \mu, \sigma_{\text{sys}}) = -\frac{1}{2} \sum_i \left[\frac{(y_i - \mu)^2}{s_i^2} + \ln(2\pi s_i^2) \right],$$

where $s_i^2 = \sigma_i^2 + \sigma_{\text{sys}}^2$. We assume a broad uniform prior on the mean, μ and a broad uniform prior on $\ln \sigma_{\text{sys}}$. We then sample the posterior probability distribution using EMCEE with 1500 steps and 128 walkers. We discard the first 500 ‘burn-in’ steps of the Markov chain and use the remaining sample to calculate the mean and standard deviation of the posterior probability distribution for μ , i.e. our best estimate for the value of the parameter and its standard error.

¹*Astrophysics Group, Keele University, Staffordshire ST5 5BG, UK*

²*Department of Astronomy, University of Geneva, Chemin Pegasi 51, CH-1290 Versoix, Switzerland*

³*Centre for Exoplanet Science, SUPA School of Physics and Astronomy, University of St Andrews, North Haugh, St Andrews KY16 9SS, UK*

⁴*Physikalisches Institut, University of Bern, Gesellschaftstrasse 6, CH-3012 Bern, Switzerland*

⁵*CNRS, CNES, LAM, Aix Marseille Univ, 13388 Marseille, France*

⁶*Instituto de Astrofísica e Ciências do Espaço, Universidade do Porto, CAUP, Rua das Estrelas, P-4150-762 Porto, Portugal*

⁷*Department of Astronomy, Stockholm University, AlbaNova University Center, SE-10691 Stockholm, Sweden*

⁸*Astrobiology Research Unit, Université de Liège, Allée du 6 Août 19C, B-4000 Liège, Belgium*

⁹*Space sciences, Technologies and Astrophysics Research (STAR) Institute, Université de Liège, Allée du 6 Août 19C, B-4000 Liège, Belgium*

¹⁰*Space Research Institute, Austrian Academy of Sciences, Schmiedlstrasse 6, A-8042 Graz, Austria*

¹¹*INAF, Osservatorio Astronomico di Padova, Vicolo dell’Osservatorio 5, I-35122 Padova, Italy*

¹²*Instituto de Astrofísica de Canarias, E-38200 La Laguna, Tenerife, Spain*

¹³*Departamento de Astrofísica, Universidad de La Laguna, E-38206 La Laguna, Tenerife, Spain*

¹⁴*Institut de Ciències de l’Espai (ICE, CSIC), Campus UAB, Can Magrass s/n, E-08193 Bellaterra, Spain*

¹⁵*Institut d’Estudis Espacials de Catalunya (IEEC), E-08034 Barcelona, Spain*

¹⁶*Depto. de Astrofísica, Centro de Astrobiología (CSIC-INTA), ESAC campus, E-28692 Villanueva de la Cãda, Madrid, Spain*

¹⁷*Departamento de Física e Astronomia, Faculdade de Ciências, Universidade do Porto, Rua do Campo Alegre, P-4169-007 Porto, Portugal*

¹⁸*Center for Space and Habitability, Gesellschaftstrasse 6, CH-3012 Bern, Switzerland*

¹⁹*Max Planck Institute for Extraterrestrial Physics, Giessenbachstrasse 1, D-85748 Garching, Germany*

²⁰*CNRS, IPAG, Université Grenoble Alpes, F-38000 Grenoble, France*

²¹*Admatis, Miskok, Hungary*

²²*Institute of Planetary Research, German Aerospace Center (DLR), Rutherfordstrasse 2, D-12489 Berlin, Germany*

²³*CNRS, Institut de physique du globe de Paris, Université de Paris, F-75005 Paris, France*

²⁴*ESTEC, European Space Agency, NL-2201AZ Noordwijk, the Netherlands*

²⁵*Lund Observatory, Department of Astronomy and Theoretical Physics, Lund University, Box 43, SE-22100 Lund, Sweden*

²⁶*Leiden Observatory, University of Leiden, PO Box 9513, NL-2300 RA Leiden, the Netherlands*

²⁷*Department of Space, Earth and Environment, Chalmers University of Technology, Onsala Space Observatory, SE-43992 Onsala, Sweden*

²⁸*Dipartimento di Fisica, Università degli Studi di Torino, via Pietro Giuria 1, I-10125, Torino, Italy*

²⁹*Department of Astrophysics, University of Vienna, Türkenschanzstrasse 17, A-1180 Vienna, Austria*

³⁰*Division Technique INSU, BP 330, F- 83507 La Seyne cedex, France*

³¹*Department of Physics, University of Warwick, Gibbet Hill Road, Coventry CV4 7AL, UK*

³²*Science and Operations Department - Science Division (SCI-SC), Directorate of Science, European Space Agency (ESA), European Space Research and Technology Centre (ESTEC), Keplerlaan 1, NL-2201-AZ Noordwijk, the Netherlands*

³³*Konkoly Observatory, Research Centre for Astronomy and Earth Sciences, 1121 Budapest, Konkoly Thege Miklós út 15-17, Hungary*

³⁴*IMCCE, UMR8028 CNRS, Observatoire de Paris, PSL Univ., Sorbonne Univ., 77 av. Denfert-Rochereau, F-75014 Paris, France*

³⁵*Institut d’astrophysique de Paris, UMR7095 CNRS, Université Pierre & Marie Curie, 98bis blvd. Arago, F-75014 Paris, France*

³⁶*Department of Astrophysics, University of Vienna, Tuerkenschanzstrasse 17, A-1180 Vienna, Austria*

³⁷*INAF, Osservatorio Astrofisico di Catania, Via S. Sofia 78, I-95123 Catania, Italy*

³⁸*Institute of Optical Sensor Systems, German Aerospace Center (DLR), Rutherfordstrasse 2, D-12489 Berlin, Germany*

³⁹*Dipartimento di Fisica e Astronomia ‘Galileo Galilei’, Università degli Studi di Padova, Vicolo dell’Osservatorio 3, I-35122 Padova, Italy*

⁴⁰*Cavendish Laboratory, JJ Thomson Avenue, Cambridge CB3 0HE, UK*

⁴¹*Center for Astronomy and Astrophysics, Technical University Berlin, Hardenberstrasse 36, D-10623 Berlin, Germany*

⁴²*Institut für Geologische Wissenschaften, Freie Universität Berlin, D-12249 Berlin, Germany*

⁴³*ELTE E’otv’os Loránd University, Gothard Astrophysical Observatory, Szent Imre h. u. 112, 9700 Szombathely, Hungary*

⁴⁴*MTA-ELTE Exoplanet Research Group, Szent Imre h. u. 112, 9700 Szombathely, Hungary*

⁴⁵*Institute of Astronomy, University of Cambridge, Madingley Road, Cambridge CB3 0HA, UK*

This paper has been typeset from a $\text{\TeX}/\text{\LaTeX}$ file prepared by the author.