



CHALMERS
UNIVERSITY OF TECHNOLOGY

Phylogenetic analysis and in-depth characterization of functionally and structurally diverse CE5 cutinases

Downloaded from: <https://research.chalmers.se>, 2026-04-03 05:51 UTC

Citation for the original published paper (version of record):

Novy, V., Carneiro, L., Shin, J. et al (2021). Phylogenetic analysis and in-depth characterization of functionally and structurally diverse CE5 cutinases. *Journal of Biological Chemistry*, 297(5). <http://dx.doi.org/10.1016/j.jbc.2021.101302>

N.B. When citing this work, cite the original published paper.



Phylogenetic analysis and in-depth characterization of functionally and structurally diverse CE5 cutinases

Received for publication, July 19, 2021, and in revised form, September 19, 2021 Published, Papers in Press, October 13, 2021, <https://doi.org/10.1016/j.jbc.2021.101302>

Vera Novy^{1,2}, Leonor Vieira Carneiro¹ , Jae Ho Shin¹ , Johan Larsbrink^{1,2}, and Lisbeth Olsson^{1,2,*}

From the ¹Division of Industrial Biotechnology, Department of Biology and Biological Engineering and ²Wallenberg Wood Science Center, Chalmers University of Technology, Gothenburg, Sweden

Edited by Joseph Jez

Cutinases are esterases that release fatty acids from the apoplastic layer in plants. As they accept bulky and hydrophobic substrates, cutinases could be used in many applications, ranging from valorization of bark-rich side streams to plastic recycling. Advancement of these applications, however, requires deeper knowledge of cutinases' biodiversity and structure–function relationships. Here, we mined over 3000 members from carbohydrate esterase family 5 for putative cutinases and condensed it to 151 genes from known or putative lignocellulose-targeting organisms. The 151 genes were subjected to a phylogenetic analysis, which showed that cutinases with available crystal structures were phylogenetically closely related. We then selected nine phylogenetic diverse cutinases for recombinant production and characterized their kinetic activity against para-nitrophenol substrates esterified with consecutively longer alkyl chains (*p*NP-C₂ to C₁₆). Each investigated cutinase had a unique activity fingerprint against the tested *p*NP substrates. The five enzymes with the highest activity on *p*NP-C₁₂ and C₁₆, indicative of activity on bulky hydrophobic compounds, were selected for in-depth kinetic and structure–function analysis. All five enzymes showed a decrease in *k*_{cat} values with increasing substrate chain length, whereas *K*_M values and binding energies (calculated from *in silico* docking analysis) improved. Two cutinases from *Fusarium solani* and *Cryptococcus* sp. exhibited outstandingly low *K*_M values, resulting in high catalytic efficiencies toward *p*NP-C₁₆. Docking analysis suggested that different clades of the phylogenetic tree may harbor enzymes with different modes of substrate interaction, involving a solvent-exposed catalytic triad, a lipase-like lid, or a clamshell-like active site possibly formed by flexible loops.

Cutinases (EC 3.1.1.74) are small serine esterases (20–25 kDa) that show hydrolytic, esterification, and transesterification activity on hydrophobic compounds (1). They belong to the α/β hydrolase superfamily, and similar to lipases they possess a Ser–His–Asp catalytic triad and an oxyanion hole for transition state stabilization of the substrate. Unlike lipases, cutinases have the catalytic triad located in a shallow binding cleft, exposed to the solvent and thus can act on

hydrophobic, high-molecular-weight molecules without the need for surface activation (1, 2).

The native substrates of cutinases are cutin and suberin (1, 2), which represent the main components of the apoplastic barrier in higher plants (3). These polyesters are made from long fatty acid chains, C₁₆–C₁₈ for cutin and C₁₆–C₃₄ for suberin, which form links to each other and to a polyaromatic, lignin-like domain, *via* glycerol or ferulic acid head groups (4, 5). Together, these polymers create a complex three-dimensional network with important functions for the plant such as management of water-, solute-, and gas translocation as well as providing physical strength and resistance to pathogenic attack (6). The cutin- or suberin-derived fatty acids contain a diverse combination of functional groups, including epoxy-, alcohol-, and carboxy groups as well as unsaturated bonds (3). These traits make plant-cuticle derived fatty acids interesting polymer precursors for fine chemical applications that have the potential to replace conventional, petrochemical compounds (7).

Previous studies have suggested that cutinases are secreted by plant pathogens to either disrupt the protective apoplastic layer to allow access to the underlying cells and cell walls or, alternatively, to enable direct use of the released fatty acids as carbon sources (6, 8). Industrial use of cutinases includes exploiting their esterification and transesterification activity (2) to synthesize new compounds, such as flavor esters (9). More significant, however, is their ability to hydrolyze ester bonds of bulky and/or hydrophobic polymers. Their ability to act on man-made polymers, such as the aromatic plastic PET (polyethylene terephthalate) or the aliphatic plastic PLA (polylactic acid), holds promise to make cutinases key tools in plastic degradation, recycling, and upgrading (1, 9, 10). Moreover, cutinases could be applied on their natural substrates to release cutin- and suberin-derived fatty acids from plant cuticles, such as the bark and root of trees. Releasing such fatty acids could add a high-value product to conventional forest-based biorefinery processes, facilitating their economic feasibility.

The biodiversity of organisms encoding cutinases is vast. Within the Carbohydrate-Active Enzymes database (CAZy, www.cazy.org, (11)), cutinases are found in Carbohydrate Esterase family 5 (CE5), which today contains over 3000 entries. Enzymes have been described to originate chiefly from

* For correspondence: Lisbeth Olsson, lisbeth.olsson@chalmers.se.

CE5 cutinases—phylogenetic and structure–function analysis

bacteria and eukaryotes (mainly fungi), with candidates of both origins being able to act on cutin, suberin, or both (1, 2, 9). The CE5 family additionally contains enzymes with acetyl xylan esterase activity (EC 3.1.1.72). Cutinases not enlisted in the CE5 family have also been described, where dedicated PETases, e.g., from *Ideonella sakaiensis*, are the most prominent ones (12). Here, we solely focused on cutinases that are active on plant biomass, belonging to the CE5 family.

The sequence identity between cutinases has been reported to be quite low (1, 13), and extensive functional development based on evolution has been described for this type of enzyme (13). The corresponding broad diversity in structure–function relationships could be exploited to identify suitable cutinase candidates for a specific application (10). However, previous studies only looked at a few sequences (1, 13), and in-depth information on biodiversity, enzyme kinetics, and enzyme structure–function relationships within CE5 is lacking, hindering the full exploration of cutinases. As of July 2021, only nine solved crystal structures of CE5 cutinases have been reported, and as we demonstrate in this study, most of them are phylogenetically close. Further, using the most common model substrate, *para*-nitrophenol (*p*NP) esterified with fatty acids of increasing chain length (*p*NP-C_n) (1), most studies only state the volumetric activity of selected cutinases (14–21). Reports of the kinetic parameters K_M (indicating substrate affinity), k_{cat} (maximal turnover rate), k_{cat}/K_M (specificity constant), or quantified enzyme–ligand interactions are much rarer (22, 23). Such detailed information is, however, vital to understand the structure–function relationship of cutinases and hence brings these promising types of enzymes closer to application.

In the present study, we explore the biodiversity of CE5 cutinases and provide in-depth information on enzyme kinetics and structure–function relationships of phylogenetically, structurally, and kinetically diverse cutinases. As CE5 is a polyspecific family, we filtered its members to focus on ~150 putatively active cutinases, which were phylogenetically analyzed. Out of these, nine cutinases from across the phylogenetic tree were selected and recombinantly expressed in *Pichia pastoris*, and the differences in sequence were reflected in their individual activities toward *p*NP-C₂ to *p*NP-C₁₆ substrates as well as in their modeled protein structures. The five candidates with the highest activity on *p*NP-C₁₆, indicating activity on bulky and hydrophobic substrates, were subjected to in-depth kinetic characterization and structure–function analysis by *in silico* docking analyzes. Our results shed light on the diversity of CE5 cutinases and have implications for both their utilization and future enzyme discovery efforts.

Results and discussion

Phylogenetic analysis of CE5

By 2021, over 3000 members are listed in the CAZy database CE5 family. We sorted the listed enzymes in CE5 to condense the family to putative cutinases and subjected the resulting entries to a phylogenetic analysis. Nine enzymes (summarized in Table 1), spanning the phylogenetic tree, were selected for

Table 1
Description of cutinases selected for recombinant production and kinetic characterization

Protein id	Uniprot accession	Source organism	Reference
CcCut	B9U443	<i>Coprinopsis cinerea</i> Fungi; Basidiomycete; Filamentous	(18)
ScSub	A0A5P3LVN0	<i>Streptomyces scabiei</i> ; Bacteria; Actinobacteria	(20)
AnCut	Q5B2C1	<i>Aspergillus nidulans</i> Fungi; Ascomycete; Filamentous	(8)
PbCut	Q9Y7G8	<i>Pyrenopeziza brassicae</i> Fungi; Ascomycete; Filamentous	(44)
ScCut	S4VCH4	<i>Sirococcus conigenus</i> Fungi; Ascomycete; Filamentous	(19)
McCut	A1DGN0.1	<i>Aspergillus fischeri</i> ^a Fungi; Ascomycete; Filamentous	(45)
TtCut	G2RAE6	<i>Thermothielavioides terrestris</i> Fungi; Ascomycete; Filamentous	(15)
FsCut	P00590.1	<i>Fusarium solani</i> Fungi; Ascomycete; Filamentous	(46)
CspCut	Q874E9	<i>Cryptococcus</i> sp Fungi; Basidiomycete; Yeast	(47)

^a Gene detected in *Malbranchea cinnamomea* transcriptome in in-house study, annotated as *Aspergillus nidulans* cutinase A1DGN0.1.

cloning and characterization against *p*NP-substrate with increasing chain lengths.

A scheme was devised to sort CE5 sequences into putative cutinases according to the decision tree depicted in Figure S1. For this, entries were first evaluated toward their likelihood to result in a mature, active enzyme. In a second step, the correlation of either the enzyme or the encoding organism to lignocellulolytic activity was assessed (e.g., plant pathogens), indicating potential suberin- or cutin-degrading activity. The resulting list of genes contained 151 putative cutinases with 41 from bacterial and 110 from fungal organisms, suggesting a predominance of cutinases in fungal lignocellulose degraders. Of the 41 bacterial cutinases, 32 are from the *Mycobacterium* genus within the Actinobacteria phylum, where species of *Mycobacterium* spp (16 species) and *Mycolicibacter* spp (14 species) were most common. The fungal cutinases originated from a broader set of organisms, where ascomycetes were more common than basidiomycetes. Here, the most represented genera are *Aspergillus* (12 species), *Fusarium* (26 species), and *Pyricularia* (15 species).

The phylogenetic tree constructed from the 151 cutinase sequences is displayed in Figure 1. The tree revealed nine main clades, or clusters, of which a detailed description is given in Figure S2 (1). The amino acid sequence identities between the 151 cutinases analyzed in this study ranged from 8 to 93% (as analyzed with Clustal Omega at <https://www.ebi.ac.uk/>), proving the vast sequence diversity of this enzyme family. Our results are in line with a previous study (13), where analysis of the evolutionary history of cutinases from five ascomycetes revealed “extreme sequence diversity.” Transcript profiling for categorizing regulatory patterns has further suggested that phylogenetically related cutinase genes in *Magnaporthe grisea* underwent extensive sub- and neo-functionalization (13). This implies that the genome of a single organism can harbor and differentially express cutinases with low sequence identity and broad functionality, which was likely a chief driver for the niche differentiation of some fungi into plant parasites (6, 8, 13).

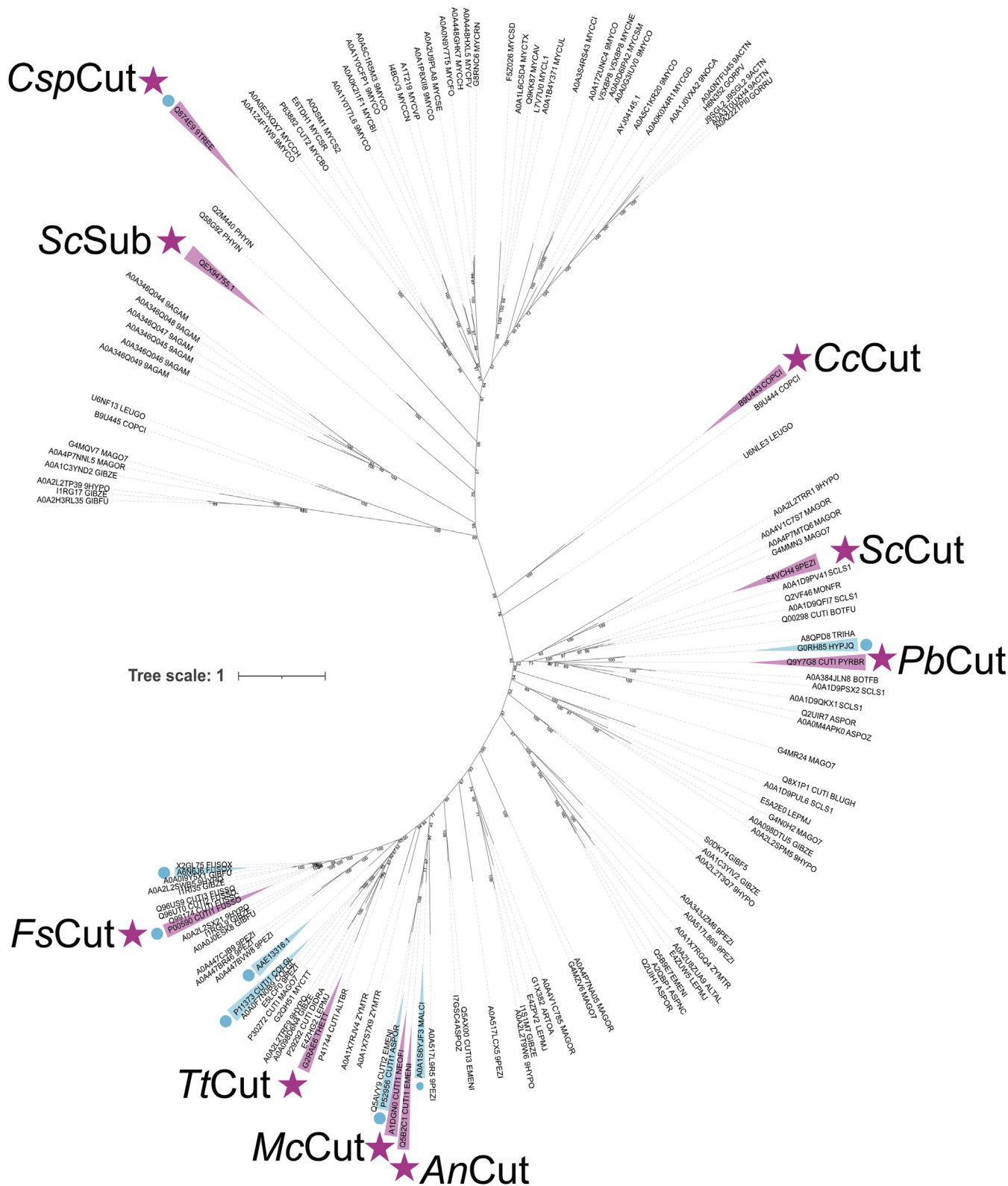


Figure 1. Phylogenetic tree of CE5 cutinases. Proteins chosen for cloning and characterization are marked in *magenta* and stars with the abbreviation used in this study (Table 1). Proteins with solved crystal structures are highlighted in *turquoise* and additionally marked with a *circle* for clarity. A decision tree on the narrowing down process of the CE5 entries is summarized in Figure S1. The main organisms found in each clade are summarized in Figure S2. A summary of all entries is submitted with this paper (supporting information).

CE5 cutinases—phylogenetic and structure–function analysis

Supporting the proposed physiological function of cutinases, the majority of the fungal cutinases selected in this study are from plant pathogens (Fig. S2). The function of cutinases from the human and animal pathogen *Mycobacterium* as esterases, in contrast, is likely parallel to that of other enzymes accepting hydrophobic substrates and might contribute to the pathogenicity by degrading the cell membrane of the infected host. Because they lack cutin-degrading activity (24), they were placed outside the scope of this study. Our phylogenetic analysis showed that the *Mycobacterium* cutinases form their own discrete clade clearly apart from enzymes from other clades, which mainly harbor fungal enzymes (Fig. S2, “clade G”).

The selected 151 sequences encompass nine solved cutinase crystal structures (Fig. 1), six of which are in one area of the phylogenetic tree (Fig. S2, clades A, B, and C). From the analyzed cutinases, the one from *Fusarium solani* (accession number P00590) is the most studied with 44 resolved structures of the wild-type enzyme and various variants.

From the phylogenetic tree, the next step was to identify cutinases from different organisms for recombinant production in *P. pastoris*, followed by kinetic characterization. Cutinases from diverse sources have been successfully produced in *P. pastoris*, suggesting it to be a suitable host for these enzymes (14, 15, 17, 19, 22, 25). The nine resulting enzyme candidates are listed in Table 1, which also summarizes the herein used abbreviations, accession numbers, and source organisms. The choice of target genes for recombinant production was based on several criteria. From the phylogenetic analysis, at least one candidate of each phylum (*i.e.*, basidiomycete, ascomycete, and actinobacterium) and main observed genera (*Fusarium*, *Aspergillus*) should be represented. Secondly, the biodiversity should be spanned, using both enzymes from the well-analyzed clades (Fig. S2, clades A, B, and C) as well as from underinvestigated areas of the tree (Fig. 1). Thirdly, from our previous transcriptome studies of *Malbranchea cinnamomea* and *Thielavia terrestris* (26, 27), we have identified two cutinases significantly overexpressed on lignocellulolytic substrates, which were also added to the list. Finally, we added a cutinase from *Sirococcus conginiensis* because of its suggested acid tolerance (19), a trait important in a biorefinery context where pretreatment results in low pH of the biomass slurries (25).

Kinetic and structural characterization of nine phylogenetically diverse cutinases

The “activity fingerprints” (*i.e.*, the relative specific activity of each enzyme against *p*NP-C₂ to *p*NP-C₁₆) were determined (Fig. 2), and a summary of the mean specific activities (in U mg⁻¹ total protein in the cultivation supernatant) and the spread can be found in Table S1. Each cutinase showed a unique fingerprint. The activity maximum (“100%” activity, Fig. 2) was reached on shorter chain substrates: *p*NP-C₂ (*PbCut*), *p*NP-C₄ (*CcCut*, *ScSub*, *ScCut*, *McCut*, *FsCut*, and *CspCut*), or *p*NP-C₈ (*AnCut*, *TtCut*). While enzymes with activity maxima at *p*NP-C₂ to C₆ seem to be common (14–21),

the preference of *AnCut* and *TtCut* for *p*NP-C₈ appears to be less common as only a few cutinases have been described to prefer these longer chain fatty acid esters (22).

With the longest chain length substrates, *p*NP-C₁₂ and *p*NP-C₁₆, all nine cutinases had lower activity than on the short substrates (Fig. 2), an effect also observed in other studies (15–22). The extent of the reduced activity was, however, individual for each enzyme (Fig. 2), and the reduction is likely a result of the increased hydrophobicity caused by the long, hydrophobic alkyl chains of these substrates (28). In addition, the enzyme must be able to accommodate the long and bulky substrate in the active site and binding cleft, for which some cutinases might have a more suitable surface topology than others.

To elucidate the underlying reason for the divergent performance of the nine cutinases, we looked at their overall and active site structure, either using solved crystal structures (*FsCut*, *CspCut*) or by creating enzyme models, using three modeling algorithms (Phyre2, iTasser, SWISS-MODEL). After extensive examination of the models and comparison with their templates (*i.e.*, alignment of the catalytic triad and the oxyanion hole, formation of disulfide bridges, configuration of N- and C-termini), one model for each enzyme was chosen for further analysis. An overview of the results is given in Table 2, the structures are displayed in Figure S3.

Except for *PbCut*, all enzymes contain a Ser-His-Asp catalytic triad, typical for cutinases. *PbCut* (Table 2; Fig. S3) harbors a Ser-His-His triad. Although less common, this unconventional catalytic triad has been described for some serine proteases (29). Mutational studies (30) have shown, however, that removal of the Asp-replacing His only affects the activity marginally, suggesting that *PbCut* likely harbors a functional dyad.

The oxyanion hole is also conserved across the investigated cutinases and is composed of a Thr or a Ser and a Gln residue, with both the backbone amides and/or the amino acid side chains being involved (Table 2; Fig. S3).

Despite the similarity of the catalytic triad, the enzymes’ architecture around the binding cleft can vary significantly (Table 2; Fig. S3). In the cases of *CcCut*, *McCut*, *CspCut*, and *FsCut*, the catalytic triad and oxyanion hole are located in a shallow cleft with the amino acid residues of the catalytic triad exposed to the solvent. This has been described as a unique feature of cutinases (31), setting them apart from lipases, which have a lid covering the active site. In contact with the hydrophobic substrate, the lid is removed and the catalytic triad exposed to the substrate (“surface/interfacial activation”) (32). Interestingly, we found that in some cutinases the catalytic triad is embedded in a tunnel (*TtCut*) or deeper within the enzyme (*AnCut*, *ScCut*). In literature, one cutinase (from *Trichoderma reesei*, accession number G0RH85) has been described where an N-terminal loop with high flexibility is covering the active site cleft (33). In that study, it was hypothesized that this loop has a function similar to the lid observed in lipases and plays an active part in substrate recognition and binding (33). This would place this and similar cutinases between lipases and cutinases as traditionally described. In this study, the *T. reesei* cutinase

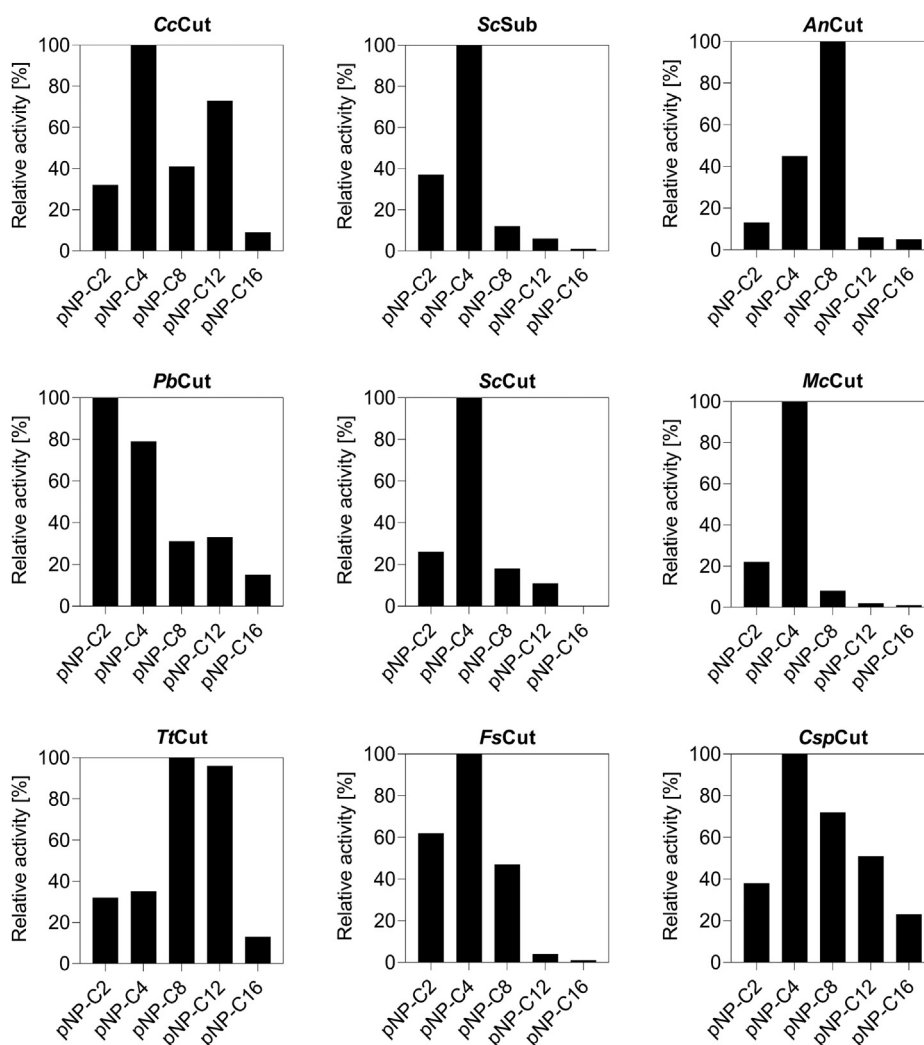


Figure 2. Activity profile of the nine selected cutinases against pNP-substrates determined at pH 7. Depicted is the relative specific activity (normalized on the highest activity measured for each enzyme) measured in the concentrated supernatant of *P. pastoris* cultivations. Values are averages from duplicate experiments. A summary of the mean specific activities (in U mg⁻¹ total protein in the cultivation supernatant) and the data spread can be found in Table S1.

crystal structure G0RH85 was the main template for four cutinases, with *CcCut*, *ScSub*, and *ScCut* being modeled after the enzyme in its native form (PDB: 4PSC or 4PSD), where the lid is “closed.” Only *PbCut* was modeled after the complexed form (C11Y4 phosphonate inhibitor; PDB: 4PSE), where the lid is swung out. The proposed function of the lid is discussed later

in the paper, when analyzing the structure–function relationship of *CcCut* and *PbCut* in more detail. It is worth mentioning that all four sequences (*CcCut*, *ScSub*, *ScCut*, and *PbCut*) are located in the less investigated parts of the phylogenetic tree (Fig. S2), where *CcCut*, *ScCut*, and *PbCut* are very close (in or close to clade F; Fig. S2).

Table 2
Structural overview of the nine selected cutinases

Protein id	Catalytic triad/oxyanion hole	Hydrophobic area	Catalytic triad location
<i>CcCut</i>	Ser116, His180, Asp168/Thr42, Gln117	Around binding cleft	Shallow binding cleft, exposed to solvent
<i>ScSub</i>	Ser87, His168, Asp155/Thr15, Gln88, Ser54	All binding face	Deep binding cleft, exposed to solvent
<i>AnCut</i>	Ser127, His195, Asp182/Ser49, Gln125	Around binding cleft	Embedded deeper in the enzyme
<i>PbCut</i>	Ser118, His183, His170/Thr43, Gln119	All binding face	Deep narrow binding cleft, proposed involvement of loop
<i>ScCut</i>	Ser118, His182, Asp169/Thr42, Gln119	Two loops flanking binding cleft	Embedded deeper in the enzyme
<i>McCut</i>	Ser125, His193, Asp180/Ser47, Gln126	Two loops flanking binding cleft	Shallow binding cleft, exposed to solvent
<i>TfCut</i>	Ser127, His195, Asp182/Ser49, Gln125	Around binding cleft	Encased in a tunnel
<i>CspCut</i>	Ser85, His179, Asp165/Thr17, Gln86	Two loops flanking binding cleft	Shallow binding cleft, exposed to solvent
<i>FsCut</i>	Ser120, His188, Asp175/Ser42, Gln121, Asn84	Two loops flanking binding cleft	Shallow binding cleft, exposed to solvent

Surface models and active side configurations of each enzyme are shown in Figure S3.

CE5 cutinases—phylogenetic and structure–function analysis

One active site configuration that differed from the other architectures is that of *ScSub* (Fig. S3). This enzyme was the only CE5 member denoted “suberinase” (20) and has a much wider and deeper active site cleft. Considering the complex ultrastructure of suberin consisting of longer chain fatty acids than cutin (3, 4), *ScSub* might be a result of evolutionary functionalization toward suberin as substrate. Although *ScSub* did not show above average activity against *pNP-C*₁₂ and *pNP-C*₁₆ in this study (Figs. 2 and 3), *ScSub* still might be an excellent candidate for suberin degradation.

Aside from the configuration of the active site, the enzymes differ in the amount and distribution of hydrophobic patches on the enzyme surface. As cutinases’ natural substrate is highly hydrophobic, this trait is pivotal in facilitating efficient substrate recognition (1), and all cutinases analyzed here have hydrophobic areas around the proposed binding clefts (Fig. S3). However, there are differences in the distribution of these hydrophobic areas, as highlighted in Figure S3 and summarized in Table 2. The hydrophobic areas can either be limited to a comparatively narrow space around the active site cleft (*AnCut*), extend over the enzyme surface forming a hydrophobic face (*ScSub*, *PbCut*, *TtCut*), or be found on two loops flanking the binding cleft (“left and right” of the binding cleft in Fig. S3; *ScCut*, *McCut*, *CspCut*, *FsCut*). These differences might suggest different modes of action toward the substrate or indicate differences in substrate preferences.

Detailed kinetic characterization and structure–function analysis of cutinases with high *pNP-C*₁₂ and *pNP-C*₁₆ activity

From the initial activity fingerprint of the nine cutinases (Fig. 2), *CcCut*, *PbCut*, *TtCut*, and *CspCut* stood out for their superior *pNP-C*₁₂ and *pNP-C*₁₆ activity (Fig. 3). These enzymes have extensive hydrophobic areas flanking the binding cleft (Table 2; Fig. S3). *CcCut*, *PbCut*, and *CspCut* further harbor the open binding cleft, with the active site exposed to the solvent. Although such an active site topology has been shown to aid activity on long chain substrates (23, 34), it does not appear to be a decisive feature as comparison of *ScSub* (wide and open binding cleft; low *pNP-C*₁₂ and *C*₁₆ activity) and *TtCut* (tunnel; high *pNP-C*₁₂ and *C*₁₆ activity) shows (*cf.*, Table 2; Figs. 3 and S3). Apart from *CcCut*, *PbCut*, *TtCut*, and

CspCut, we also included *FsCut* in the kinetic characterization, as it is the most well-studied cutinase and provides a good basis for comparison. Activities for *FsCut* were found to be comparable to previously reported data (21).

In previous studies, cutinases have mainly been characterized by analyzing volumetric activities towards various *pNP*-substrates (14–21), while in-depth characterization to determine kinetic parameters is much rarer (22, 23). Here we performed an in-depth characterization to determine the kinetic parameters of *CcCut*, *PbCut*, *TtCut*, *CspCut*, and *FsCut* against *pNP-C*₂ to *pNP-C*₁₆ (Table 3).

All five cutinases showed decreased K_M values (indicating improved substrate affinity) with increasing substrate chain length, indicating a better fit in the active site: the K_M values decreased from *pNP-C*₂ to *pNP-C*₁₆ by 12-, 302-, 49-, 198-, and 525-fold for *CcCut*, *PbCut*, *TtCut*, *CspCut*, and *FsCut*, respectively (Table 3). The lowest K_M values were, however, enzyme-dependent, with *CcCut* preferring *pNP-C*₈, *TtCut* *pNP-C*₁₂, and *PbCut*, *CspCut*, and *FsCut* *pNP-C*₁₆. This shows that all enzymes have an increased affinity toward the more native-like substrates, as *pNP-C*₁₆ closely resembles ferulic palmitate, a major building block in both cutin and suberin (35). In kinetic characterizations of *Glomerella cingulata* and *Aspergillus oryzae* cutinases, a similar trend, *i.e.*, increasing substrate affinity with longer chain *pNP*-substrates, has been observed (21, 23).

In contrast to the apparent better fit of longer substrates in the cutinase active sites, as indicated by decreasing K_M values, k_{cat} decreased for all enzymes with increasing substrate chain length (Table 3). To investigate this correlation between substrate affinity and turnover rate further, K_M was plotted against k_{cat} for each of the five cutinases assayed against the five *pNP*-substrates. The resulting plots are summarized in Figure 4. In all cases the decreasing K_M correlated well with decreasing k_{cat} values, resulting in a positive slope of the K_M - k_{cat} plots (Fig. 4). The slope, however, differed, with *PbCut* (0.93; R^2 0.85) and *CcCut* (1.23; R^2 0.97) showing a more moderate increase, and *TtCut* (2.66; R^2 0.99), *CspCut* (2.60; R^2 0.97), and *FsCut* (3.90; R^2 0.99) a steeper raise.

Catalytic efficiency is important when choosing an enzyme for a given application. In our study, *CspCut* and *FsCut* were the only two enzymes, where the very low K_M observed with

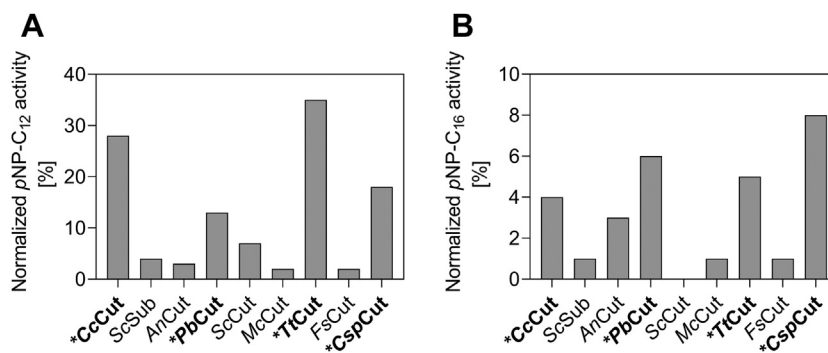


Figure 3. Identifying cutinases for in-depth kinetic analysis. Depicted is the normalized *pNP-C*₁₂ (A) and *pNP-C*₁₆ (B) activity of all nine cutinases, given as percentage of the sum of all *pNP* (*C*₂ to *C*₁₆) activities measured for each enzyme. Data were extracted from Figure 2. Values are averages from duplicate experiments. A summary of the mean specific activities (in U mg⁻¹ total protein in the cultivation supernatant) and the data spread can be found in Table S1. y-axes adjusted for clarity.

Table 3
In-depth kinetic^a and docking^b analysis of five cutinases

	CcCut	PbCut	TtCut	FsCut	CspCut
K_M (mM)					
pNP-C ₂	34.31 ± 0.62	11.73 ± 0.15	24.81 ± 3.43	7.31 ± 0.25	9.54 ± 0.99
pNP-C ₄	3.56 ± 0.15	1.71 ± 0.17	7.08 ± 0.09	1.67 ± 0.04	5.54 ± 0.50
pNP-C ₈	1.67 ± 0.18	0.54 ± 0.07	0.39 ± 0.01	0.72 ± 0.01	0.05 ± 0.00
pNP-C ₁₂	2.76 ± 0.05	0.08 ± 0.01	0.21 ± 0.00	0.05 ± 0.01	0.05 ± 0.00
pNP-C ₁₆	2.90 ± 0.20	0.04 ± 0.01	0.50 ± 0.09	0.01 ± 0.00	0.05 ± 0.00
k_{cat} (s ⁻¹)					
pNP-C ₂	41.37 ± 1.46	11.84 ± 0.40	65.79 ± 7.96	29.96 ± 1.16	29.74 ± 1.80
pNP-C ₄	8.96 ± 0.39	6.45 ± 0.52	15.92 ± 0.06	7.70 ± 0.19	13.52 ± 0.25
pNP-C ₈	1.70 ± 0.17	1.43 ± 0.09	2.30 ± 0.06	6.69 ± 0.24	3.81 ± 0.27
pNP-C ₁₂	0.22 ± 0.01	0.20 ± 0.00	0.07 ± 0.00	1.22 ± 0.03	3.49 ± 0.06
pNP-C ₁₆	0.06 ± 0.00	0.08 ± 0.00	0.09 ± 0.01	0.15 ± 0.00	3.38 ± 0.12
k_{cat}/K_M (mM ⁻¹ s ⁻¹)					
pNP-C ₂	1.21 ± 0.02	1.01 ± 0.02	2.66 ± 0.05	4.10 ± 0.02	3.13 ± 0.14
pNP-C ₄	2.52 ± 0.00	3.79 ± 0.07	2.25 ± 0.04	5.71 ± 0.08	2.51 ± 0.27
pNP-C ₈	1.02 ± 0.01	2.65 ± 0.19	5.81 ± 0.05	9.25 ± 0.26	83.20 ± 4.20
pNP-C ₁₂	0.08 ± 0.00	2.50 ± 0.18	0.31 ± 0.01	22.78 ± 2.09	65.97 ± 0.60
pNP-C ₁₆	0.02 ± 0.00	2.07 ± 0.25	0.19 ± 0.02	10.60 ± 1.06	70.68 ± 6.47
Binding energy (kcal mol ⁻¹) ^b					
pNP-C ₂	-13.5	-23.8	-22.7	-28.6	-12.5 (-21.7) ^c
pNP-C ₄	-11.3	-21.8	-26.6	-36.7	-15.4 (-24.9) ^c
pNP-C ₈	-25.7	-30.2	-29.5	-23.9	-19.4 (-30.1) ^c
pNP-C ₁₂	-31.2	-37.7	-33.8	-31.7	-27.0 (-29.7) ^c
pNP-C ₁₆	-32.5	-42.0	-38.3	-31.0	-36.5 (-40.9) ^c

^a Cutinases were purified by affinity chromatography. Depicted are mean values and the spread from duplicate experiments.

^b From *in silico* docking analyzes. Constraints and docking scores are summarized in Table S2.

^c Binding energies in brackets are calculated for the *in silico* Gly176Leu variant.

pNP-C₈ to pNP-C₁₆ offset losses in k_{cat} , resulting in an improved catalytic efficiency, *i.e.*, k_{cat}/K_M , with increasing pNP-substrate length (Table 3). A similar trend of k_{cat} and K_M for long chain pNP-substrates has so far only been described for the cutinase from *G. cingulata* (22).

For all enzymes, the binding is improving, *i.e.*, binding energy is decreasing, with increasing substrate chain length (Table 3), and the improved binding is mirrored by the decreasing K_M -values (Fig. S4). The calculated *in silico* binding energy can be useful to estimate the substrate affinity in cutinase enzymes. However, differences in the correlations could be detected (Fig. S4), where similar decreases in binding energies resulted in a more (*TtCut*, *PbCut*, *CspCut*) or less (*CcCut*, *FsCut*) pronounced improvement in $\ln(K_M)$ (Table 3; Fig. S4). One aspect is

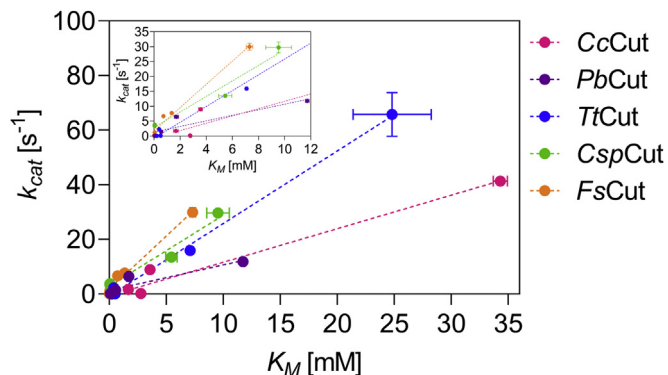


Figure 4. Correlation between K_M and k_{cat} in kinetic characterization of *CcCut*, *PbCut*, *TtCut*, *CspCut*, and *FsCut* using pNP-C₂ to pNP-C₁₆ as substrates. A summary of the kinetic parameters can be found in Table 3. The dotted line represents the linear regressions of each data set (R^2 0.85–0.99). Insert for smaller K_M (0–12 mM) and k_{cat} (0–35 s⁻¹) values was added for clarity.

that, although high binding energies are pivotal in facilitating efficient enzyme–ligand interaction, strong interaction of the substrate with the active side amino acid residues can result in slow product release, preventing the onset of a new catalytic cycle (36).

The five cutinases show different modes of substrate interaction

To further understand the divergence between the catalytic efficiency and the binding energy with increasing chain lengths, a detailed structure–function analysis was conducted using pNP-C₁₆ as substrate. Representations of the enzyme surfaces and the active site pockets of the docked structures are summarized in Figure 5. Between the five enzymes, three different pose configurations were acquired, as discussed below.

The case of *TtCut* and *FsCut*—cutinases with a solvent-exposed active site

The fits of the ligand in the active site pocket were very good for *TtCut* and *FsCut*, as assessed by docking score (Table S2), proximity of the carbonyl carbon to the catalytic serine (2.9–3.2 Å), and the close distance between the carbonyl oxygen and the oxyanion hole to allow for h-bond formation (2.1–3.6 Å). This enzyme–ligand interaction corresponds well with studies conducted on *F. solani* (37), *A. oryzae* (23), and *M. cinnamomea* (14) crystal structures, as well as with the *Alternaria brassicicola* cutinase CUTAB1 model (17). These four cutinases are also located in the same part of the phylogenetic tree (Fig. 1, clades A, B, and C; Fig. S2), indicating their relative similarity in sequence. Our docking results, hence, suggest that the structure–function relationship of *TtCut* and *FsCut*, as well as other related cutinases located in clades A, B,

CE5 cutinases—phylogenetic and structure–function analysis

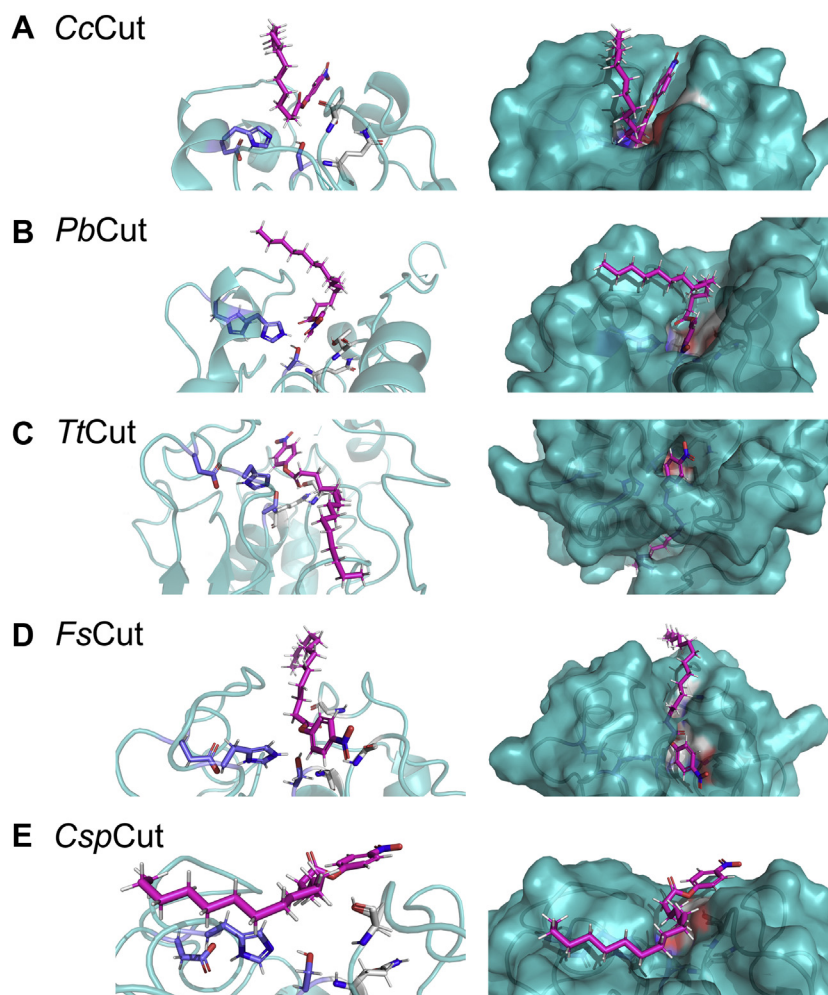


Figure 5. Docking analysis of five cutinases using pNP-C₁₆. Depicted are CcCut (A), PbCut (B), TtCut (C), FsCut (D), and CspCut (E) with the substrate in the most stable conformation. Enzyme backbones and surfaces are depicted in teal, ligands in magenta, catalytic triads in dark blue, and oxyanion holes in gray. In combination with our phylogenetic analysis, these docking results suggest three distinct modes of enzyme–substrate interaction. TtCut (C) and FsCut (D) harbor a solvent-exposed catalytic triad, CcCut (A) and PbCut (B) a lipid-like lid, and CspCut (E) has two flexible loops that might undergo a clamshell-like motion for substrate binding. Please note that angles of enzyme display are adjusted to maximize clarity.

and C of the phylogenetic tree, follows the traditional description of the cutinase enzyme family, involving a solvent-exposed active site that can enter a catalytic cycle without the need for further loop rearrangement.

The case of CcCut and PbCut—cutinases with a lipase-like lid

Docking of CcCut and PbCut with pNP-C₁₆ resulted in a bent configuration of the ligand (Fig. 5). Although the proximity of the carbonyl carbon to the catalytic serine (3.5–4.2 Å) is acceptable, this bent configuration is clearly different from the other cutinases, in which the pNP-C₁₆ goes straight over the enzymes' binding face (Fig. 5). In case of PbCut it was further not possible to achieve a pose with a h-bond to either amino acid residue of the oxyanion hole (Thr43 or Gln119, Table 2), independent of the docking restraints applied. As this is an essential part for enzyme–substrate interaction (37), this pose would not lead to completion of the catalytic cycle. Docking of pNP-C₁₆ with CcCut resulted in h-bond formation with the oxyanion residue Thr42.

Interestingly, both CcCut and PbCut have the *T. reesei* cutinase structure as template. CcCut in the enzyme's native form (PDB: 4PSC), where the lid is closed, and PbCut in its complexed form with the C11Y4 phosphonate inhibitor (PDB: 4PSE), where the lid is swung out. The configurational change of the lid described for the *T. reesei* cutinase structures has led to the hypothesis that this cutinase is functioning similar to lipases, *i.e.*, with a significant rearrangement of the loop upon substrate contact (33). Indeed, the overall structure of PbCut, with one loop swung out from the main enzyme body (Fig. S3C), closely resembles that of the “open” *T. reesei* cutinase structure (33). The phylogenetic closeness of both CcCut and PbCut with the *T. reesei* cutinase (located in or close to clade F, Fig. S2) further supports the notion that these three cutinases share properties with each other. Although the role of the moving loop cannot be investigated further with the docking analysis used herein, our results support the hypothesis that this lid movement, similar to lipases, is required for some cutinases to successfully bind bulky ligands such as pNP-C₁₆. As PbCut showed good catalytic efficiency

against the long chain *p*NP-substrates (Table 2), further investigation of this type of cutinase will be important to further understand and exploit its ability to act on bulky substrates.

The case of CspCut—a cutinase with flexible loops flanking the active site that might undergo clamshell-like motion

In case of *CspCut*, it was not possible to gain a realistic pose under any of the applied docking restraints, with the *p*NP-C₁₆ too far away from the catalytic serine (>6 Å) and the carbonyl oxygen pointing away from the active site toward the solvent. Because *CspCut* has a resolved crystal structure (PDB: 2CZQ), a closer structural examination was possible. Similar to cutinases from other organisms (14, 17, 23, 34, 37), the width of the active site cleft in *CspCut* is restricted on top by two “gatekeeper” amino acid residues, here Phe52 and Ile176 (Fig. 6).

These “gatekeeper” residues, e.g., Leu81 and Val184 in *FsCut* (Fig. S3), have been suggested to partake in substrate recognition and binding (37). Due to the closeness of these residues on opposite loops, they also have been suggested to restrict binding of bulkier ligands. Hence, engineering studies on *F. solani* (34, 37) and *A. brassicicola* (17) cutinases have replaced these amino acid residues (Leu, Ile, Val, Phe; Fig. S3) with shorter ones, resulting in enhanced activity toward larger molecules. Following these findings, we created an *in-silico* Ile176Gly variant. The achieved pose of the substrate molecule was closer to what could be expected (Fig. 6), with improved proximity of the carbonyl carbon to the catalytic serine (3.6 Å) and a h-bond formed between the carbonyl oxygen and oxyanion hole residue Thr17 (2.4 Å). The docking score also drastically improved (Table S2). However, *CspCut* already has

superior affinity and excellent catalytic efficiency against *p*NP-C₈ to *p*NP-C₁₆ (Table 3), suggesting that enzyme engineering to improve catalysis for this kind of substrate is not necessary. Rather, we hypothesize that high flexibility of the two loops bracketing the active site, as reported for *F. solani* (37) and *M. cinnamomea* (14) cutinases, might allow for enough movement to enclose the ligand in the active site. Indeed, the b factor of the crystal structure shows high flexibility of the loop harboring the oxyanion hole and to a lesser extent also the one containing the catalytic triad (Fig. 6). Hence, it might be possible that *CspCut* undergoes a clam-shell-like motion, where it opens up to allow the ligand to enter the active site and then closes until the catalytic cycle is completed and the product released. Comparison of the two proteins contained in the 2CZQ crystal structure further supports this hypothesis. Hence, Phe52 on chain B (used herein for docking, due to several conflicts in amino acid positions in the chain A protein) is found on a loop facing the binding cleft (as shown in Fig. 6), whereas in chain A Phe52 is instead facing away from the binding cleft as the loop is found swung away from the active site. However, further testing of this hypothesis could not be achieved with the simple docking analysis used in this study and will remain a target for future studies.

Conclusion

Here we investigated the biodiversity among CE5 cutinases to gain knowledge on enzyme kinetics and structure–function relationships, which can help accelerate use of this poorly studied enzyme family. Our phylogenetic analysis of CE5 cutinases and characterization of phylogenetically diverse cutinases significantly adds to the current knowledge on this enzyme family’s properties. Results show that cutinases that

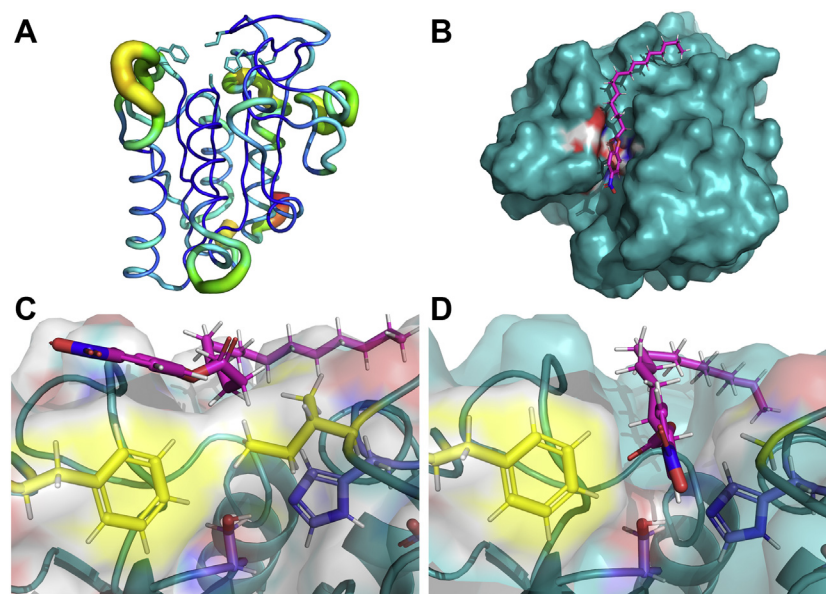


Figure 6. The role of the “gatekeeper” amino acids Phe52 and Ile176 on enzyme–ligand interaction of *CspCut*. Panel A depicts the b factor (atomic displacement parameter), where increased mobility is indicated by a broadening of the backbone cartoon and a color scale going from dark blue (little mobility) to red (highest mobility). The docked surface structure of the *in silico* Gly176Leu variant with *p*NP-C₁₆ is shown in panel B. Panels C and D illustrate the active site of the wild-type (C) and Gly176Leu variant (D) enzyme, where the catalytic triad is marked in blue, the “gatekeeper” amino acid residues in yellow, and the ligand in magenta. Please note, chain B of the crystal structure 2CZQ was used for docking analysis.

CE5 cutinases—phylogenetic and structure–function analysis

have been structurally investigated to date are closely grouped in the family's phylogenetic tree. Characterization against *p*NP-substrates with consecutively longer alkyl chains further demonstrated that each of the nine enzymes has an individual activity fingerprint. Interestingly, sequences of the five cutinases with the highest activity against *p*NP-C₁₂ and C₁₆ were scattered across the phylogenetic tree, suggesting that no single feature can be linked to high activity against bulky and hydrophobic substrates. We suggest that a combination of characteristics gives rise to this desirable trait, including the configuration of the binding cleft harboring the catalytic triad, extent, and hydrophobicity of the loops bracketing the binding cleft, as well as the length of “gatekeeper” residues enclosing the binding cleft. Detailed structure–function analysis of the five sequence-diverse cutinases further suggests that different clades of the phylogenetic tree harbor enzymes with different modes of substrate interaction. These include the traditionally described cutinase with the active site exposed to the solvent (as observed for *FsCut* and *TtCut*), substrate interaction over a lipase-like lid (*CcCut* and *PbCut*), and substrate binding involving a clamshell-like movement of likely flexible loops bracketing the binding cleft (*CspCut*). Kinetically, however, these enzymes share one trait. Although turnover rates are decreasing with increasing *p*NP-substrate length, the substrate affinity (*i.e.*, K_M and binding energies) is improving significantly. Our study shows that we only started to understand the diversity of cutinases and that there is a large knowledge gap to fill. To exploit this interesting enzyme class, further studies exploring the structure–function diversity, including resolving more cutinase structures from diverse sequences, are required.

Experimental procedures

Phylogenetic analysis

CE5 sequences to be analyzed were chosen according to the decision tree and description shown in the supporting information (Fig. S1). The selected amino acid sequences were manually trimmed to include only the catalytic domain and subsequently aligned using MUSCLE (38). The phylogenetic tree was constructed using IQ-TREE (39), with the default settings, including automatic determination of the best substitution model (WAG+G4) and 1000 ultrafast bootstraps. The tree was visualized using iTOL (40).

Cloning of cutinase genes into *P. pastoris*

Nine genes were selected for cloning into *P. pastoris* and kinetic characterization against *p*NP-substrates. Source organisms, accession numbers, and references can be found in Table 1. Genes were ordered on high-copy *Escherichia coli* plasmids via Twist Bioscience, where an N-terminal 6xHis-Tag was added, and the sequence codon optimized for *P. pastoris*, using the company's own software. Amplification of the cutinase Twist plasmids and the *Pichia* integration plasmid pPICZα A (Invitrogen) was performed in *E. coli* BL21, where cells were made chemically competent prior to transformation by heat shock. Plasmids were purified using the GeneJET Plasmid Miniprep Kit (Thermo Scientific) and subjected to a restriction

digest using EcoRI and NotI (Thermo Scientific) at 37 °C for 1 h. After inactivation at 65 °C for 5 min, ligation was performed without further DNA fragment clean-up at a volumetric pPICZα to cutinase gene ratio of 1, using T4 ligase (Thermo Scientific) at 4 °C overnight. Without further cleanup, *E. coli* BL21 was transformed with the ligation mix, containing the cutinase-pPICZα plasmids, using zeocin as selection marker. Correct plasmid configurations were tested by colony PCR using the primers AOXfw (5'→3' TAATTATTCGAAACGATGAGATTTTCCTTCAATTTTACTGC) and AOXrev (5'→3' CTGACATCCTCTTGATTAGAATCTAGCAAGAC), binding to the AOX promoter and terminator region, respectively. After amplification and purification using the GeneJET kit, the cutinase-pPICZα plasmids were linearized by SacI (Thermo Scientific) and then transformed into *P. pastoris* SMD1168H (Invitrogen) using the LiCl method and screening for zeocin resistance. Cutinase production was tested by a microscreening in 96-deep well plates with a 1 ml well volume. For this, 600 μl of YPGly10-Zeo100 (yeast extract 10 g l⁻¹, peptone 20 g l⁻¹, glycerol 10 g l⁻¹, zeocin 100 μg l⁻¹) was inoculated with a single colony, and the plate incubated at 30 °C and 500 rpm for 24 h in an incubator shaker (ThermoMixer C, Eppendorf). Hundred microliters was then transferred to a new plate with 500 μl of fresh YPGly-Zeo100. After incubation for 24 h (30 °C, 500 rpm), gene expression was induced by adding four times 6 μl of methanol every 12 h. Cutinase expression was verified by SDS-PAGE and activity screening using *p*NP-C₄ as described below. No *p*NP activity was detected in the supernatant of the *P. pastoris* SMD1168H parental strain (not harboring a cutinase gene). For each of the nine cutinase-harboring strains 10 to 20 clones were screened. SDS-PAGE results of the successful clones can be found in Figure S5.

P. pastoris cultivation for cutinase production

Recombinant *Pichia* strains were kept in glycerol (30% v/v) stocks at –80 °C. Prior to cultivations they were streaked on YPD-Zeo100 plates (yeast extract 10 g l⁻¹, peptone 20 g l⁻¹, glucose 20 g l⁻¹, zeocin 100 μg l⁻¹) and incubated for 72 h at 30 °C. One colony of each cutinase was then used to inoculate a 2 ml YPGly10-Zeo100 overnight culture in 10 ml culture tubes, which were incubated in an orbital incubator shaker at 150 rpm and 30 °C. In total, 0.5 ml of the overnight culture was then used to inoculate 50 ml of YPGly20-Zeo100 (yeast extract 10 g l⁻¹, peptone 20 g l⁻¹, glycerol 20 g l⁻¹, zeocin 100 μg l⁻¹) in 300 ml baffled shake flasks closed with two layers of miracloth (Merck). Incubation was at 30 °C, 200 rpm in an orbital incubator shaker for 48 h. Afterward, the temperature was lowered to 28 °C, and protein production was induced by adding 500 μl of pure methanol every 12 h for 48 h (2 ml total addition). After an additional incubation for 48 h, the supernatant was harvested by centrifugation. The supernatant was concentrated ten-fold (Macrosep Advance, 10 kDa cutoff, Pall Laboratories) and buffer exchanged into NaPh7 (50 mM sodium phosphate buffer, pH 7) for initial screening of cutinase activity or into binding buffer (20 mM Tris-HCl buffer, pH 8) for protein purification.

Protein purification

Protein purification by affinity chromatography was accomplished using nickel beads (Ni Sepharose Excel, GE healthcare), which were primed for use by washing five times with and incubating for 10 min in binding buffer. Then the supernatant, concentrated and buffer exchanged into binding buffer, was mixed with the primed beads and incubated for 1 h at 4 °C under constant stirring. Afterward, the beads were packed into self-pack column, and the flow-through was discarded. The beads were washed twice with three column volumes of washing buffer (20 mM Tris-HCl with 25 mM NaCl, pH8) and bound protein eluted with two times three column volumes of elution buffer (20 mM Tris-HCl with 25 mM NaCl and 250 mM imidazole, pH7), followed by immediate buffer exchange (Macrosep Advance, 10 kDa cut off) into NaPh7. SDS-PAGE was used to verify successful enzyme purification and enzyme purity (gel pictures can be found in the supporting information; Fig. S5). Enzymes were stored at 4 °C until activity analysis conducted within 72 h after purification, during which no activity loss was observed. Protein concentrations were determined by Abs₂₈₀ and the calculated extinction coefficients (41).

Activity measurement using pNP-substrates

Cutinase activity was evaluated against pNP-substrates with consecutively longer fatty acid chains. All reactions were performed in 96-well plates (Greiner Bio-One 675801) with 200 µl total volume. Substrate solutions of pNP-C₂, pNP-C₄, pNP-C₈, pNP-C₁₂, and pNP-C₁₆ were prepared in a concentration range of 0.5 to 250 mM in absolute ethanol and stored at –20 °C. In principle, all reactions were performed with the following protocol. For the substrates pNP-C₂, pNP-C₄, pNP-C₈, and pNP-C₁₂, 140 µl of NaPh7 was mixed with 50 µl of enzyme solution and preheated to 40 °C. Reactions were started by adding 10 µl of substrate solution. Due to reduced solubility, pNP-C₁₆ solutions and NaPh7 were preheated to 70 °C and then mixed at ratio 1:15 before cooling it down to 40 °C. In total, 150 µl of this solution was then mixed with 50 µl of enzyme to start the reaction. The release of pNP over time was followed at 405 nm using a SpectroStar Nano (BMG LABTECH) plate reader, and absorbance quantified against a pNP standard curve. pNP released by autohydrolysis was subtracted by running one control per each enzyme reaction, replacing the enzyme with buffer. Activities were derived from the linear area of the progress curve.

The initial activity screening of all nine cutinases was performed in duplicate experiments in the concentrated and buffer-exchanged cultivation supernatant (protein concentration range in the reaction 0.004–0.4 mg ml^{–1}) using 62.5 mM (pNP-C₂, pNP-C₄, pNP-C₈) and 31.25 mM (pNP-C₁₂, pNP-C₁₆) as substrate in NaPh7 buffer.

For in-depth kinetic characterization, the purified enzymes were used (protein concentration range in the reaction 0.1–4 µM). First, pH dependency profiles were established between pH 4 and 9, using 62.5 mM pNP-C₈ as substrate and 50 mM sodium phosphate buffer (pH 4–7) and 50 mM Tris-HCl buffer (pH 8–9). All cutinases had a discrete maximum at pH 7 (Fig. S6), so NaPh7 was used as buffer. For

determination of kinetic parameters, the specific activities (1 µmol of pNP released per minute and mg enzyme), measured for increasing substrate concentrations until saturation is reached, were plotted against the respective substrate concentration and fitted by the nonlinear MM equation using GraphPad Prism. For each kinetic characterization, 6 to 16 substrate concentrations were measured as independent experiments. The entire data set was then repeated, and data depicted herein represent mean values and the data spread.

Docking simulations

Docking simulations were performed using the flexible Glide Standard Precision (SP) function of the Maestro 12.3 program (Schrödinger, Inc). Substrate molecules were prepared using ChemDraw (PerkinElmer). Crystal structures of the CspCut (PDB: 2CZQ; (42)) and FsCut (PDB: 3QPC; (43)) were used. For CcCut, TtCut, and PbCut, enzyme models were established using SWISS MODEL (<https://swissmodel.expasy.org/>), iTASSER (<https://zhanglab.ccmb.med.umich.edu/I-TASSER/>), and Phyre2 (<http://www.sbg.bio.ic.ac.uk/~phyre2/html/page.cgi?id=index>) algorithm. Models were chosen after careful examination and comparison of the models with their templates using Pymol (Schrödinger), where focus was set on alignment of the catalytic triad and the oxyanion hole, as well as successful closure of predicted disulfide bonds. Models, crystal structures, and substrate molecules were loaded into the Maestro program and adjusted to the experimental pH of 7 using the EPIK module. A receptor grid box with 20 Å axes lengths, centered at the catalytic serine, was generated. It contained information for two docking constraints: a spatial constraint (nuclear Overhauser effect; NOE) to bring the ester bond into proximity to the catalytic serine; and a hydrogen bond constraint (hbond) to orient the carbonyl oxygen of the ester bond toward the oxyanion hole. For ligand docking, hydrogen bonds were rewarded, and an EPIK state penalty added to the docking score. Each enzyme was docked with each substrate under four constraints: using no constraints, NOE, hbond, or both. Poses were evaluated by the user according to the proximity of the ester oxygen bridge to the catalytic serine, the orientation of the carbonyl oxygen to the oxyanion hole, as well as the docking and glide rmodel score. For the best pose, the binding energy was then calculated using the Prime MM-GBSA function in Maestro (29). The constraints of each pose are summarized in Table S2. Overlays and enzyme structures presented herein were prepared using Pymol 4.6 (Schrödinger).

Data availability

All data of the presented study is included in the paper's main body or in the supporting information.

Supporting information—This article contains supporting information.

Acknowledgment—Knut and Alice Wallenberg foundation and Chalmers foundation to the Wallenberg Wood Science Center are gratefully acknowledged for financing this project.

CE5 cutinases—phylogenetic and structure–function analysis

Author contributions—V. N. and L. O. conceptualization; J. L. data curation; V. N., L. V. C., J. H. S., and J. L. formal analysis; L. O. funding acquisition; V. N. and L. V. C. investigation; V. N., L. V. C., J. H. S., and J. L. methodology; V. N. and L. O. project administration; L. O. resources; L. O. supervision; V. N. validation; V. N. writing—original draft; L. V. C., J. H. S., J. L., and L. O. writing—review and editing.

Conflict of interest—The authors declare that they have no conflicts of interest with the contents of this article.

Abbreviation—The abbreviations used are: CE5, carbohydrate esterase family 5.

References

- Chen, S., Su, L., Chen, J., and Wu, J. (2013) Cutinase: Characteristics, preparation, and application. *Biotechnol. Adv.* **31**, 1754–1767
- Chen, C.-C., Dai, L., Ma, L., and Guo, R.-T. (2020) Enzymatic degradation of plant biomass and synthetic polymers. *Nat. Rev. Chem.* **4**, 114–126
- Nawrath, C. (2002) The biopolymers cutin and suberin. *Arabidopsis Book* **1**, e0021
- Kolattukudy, P. E. (2001) Polyesters in higher plants. In: Babel, W., Steinbüchel, A., eds. *Biopolyesters*, Springer Berlin Heidelberg, Berlin, Heidelberg: 1–49
- Pollard, M., Beisson, F., Li, Y., and Ohlrogge, J. B. (2008) Building lipid barriers: Biosynthesis of cutin and suberin. *Trends Plant Sci.* **13**, 236–246
- Ranathunge, K., Schreiber, L., and Franke, R. (2011) Suberin research in the genomics era—new interest for an old polymer. *Plant Sci.* **180**, 399–413
- Ferreira, R., Garcia, H., Sousa, A. F., Freire, C. S. R., Silvestre, A. J. D., Rebelo, L. P. N., and Silva Pereira, C. (2013) Isolation of suberin from birch outer bark and cork using ionic liquids: A new source of macromonomers. *Ind. Crops Prod.* **44**, 520–527
- Martins, I., Hartmann, D. O., Alves, P. C., Martins, C., Garcia, H., Leclercq, C. C., Ferreira, R., He, J., Renaut, J., Becker, J. D., and Silva Pereira, C. (2014) Elucidating how the saprophytic fungus *Aspergillus nidulans* uses the plant polyester suberin as carbon source. *BMC Genomics* **15**, 613
- Nikolaivits, E., Kanelli, M., Dimarogona, M., and Topakas, E. (2018) A middle-aged enzyme still in its prime: Recent advances in the field of cutinases. *Catalysts* **8**, 612
- Nyysölä, A. (2015) Which properties of cutinases are important for applications? *Appl. Microbiol. Biotechnol.* **99**, 4931–4942
- Lombard, V., Golaconda Ramulu, H., Drula, E., Coutinho, P. M., and Henrissat, B. (2013) The carbohydrate-active enzymes database (CAZy) in 2013. *Nucleic Acids Res.* **42**, D490–D495
- Yoshida, S., Hiraga, K., Taniguchi, I., and Oda, K. (2021) *Ideonella sakaiensis*, PETase, and MHETase: From identification of microbial PET degradation to enzyme characterization. *Methods Enzymol.* **648**, 187–205
- Skamnioti, P., Furlong, R. F., and Gurr, S. J. (2008) Evolutionary history of the ancient cutinase family in five filamentous ascomycetes reveals differential gene duplications and losses and in *Magnaporthe grisea* shows evidence of sub- and neo-functionalization. *New Phytol.* **180**, 711–721
- Duan, X., Liu, Y., You, X., Jiang, Z., Yang, S., and Yang, S. (2017) High-level expression and characterization of a novel cutinase from *Malbranchea cinnamomea* suitable for butyl butyrate production. *Biotechnol. Biofuels* **10**, 223
- Duan, X., Jiang, Z., Liu, Y., Yan, Q., Xiang, M., and Yang, S. (2019) High-level expression of codon-optimized *Thielavia terrestris* cutinase suitable for ester biosynthesis and biodegradation. *Int. J. Biol. Macromol.* **135**, 768–775
- Bischoff, F., Litwińska, K., Cordes, A., Baronian, K., Bode, R., Schauer, F., and Kunze, G. (2015) Three new cutinases from the yeast *Arxula adenivorans* that are suitable for biotechnological applications. *Appl. Environ. Microbiol.* **81**, 5497–5510
- Koschorreck, K., Liu, D., Kazenwadel, C., Schmid, R. D., and Hauer, B. (2010) Heterologous expression, characterization and site-directed mutagenesis of cutinase CUTAB1 from *Alternaria brassicicola*. *Appl. Microbiol. Biotechnol.* **87**, 991–997
- Kontkanen, H., Westerholm-Parvinen, A., Saloheimo, M., Bailey, M., Rättö, M., Mattila, I., Mohsina, M., Kalkkinen, N., Nakari-Setälä, T., and Buchert, J. (2009) Novel *Coprinopsis cinerea* polyesterase that hydrolyzes cutin and suberin. *Appl. Environ. Microbiol.* **75**, 2148
- Nyysölä, A., Pihlajaniemi, V., Häkkinen, M., Kontkanen, H., Saloheimo, M., and Nakari-Setälä, T. (2014) Cloning and characterization of a novel acidic cutinase from *Sirococcus conigenus*. *Appl. Microbiol. Biotechnol.* **98**, 3639–3650
- Jabloune, R., Khalil, M., Ben Moussa, I. E., Simao-Beauvoir, A.-M., Lerat, S., Brzezinski, R., and Beaulieu, C. (2020) Enzymatic degradation of p-nitrophenyl esters, polyethylene terephthalate, cutin, and suberin by Sub1, a suberinase encoded by the plant pathogen *Streptomyces scabies*. *Microbes Environ.* **35**, ME19086
- Ping, L.-F., Chen, X.-Y., Yuan, X.-L., Zhang, M., Chai, Y.-J., and Shan, S.-D. (2017) Application and comparison in biosynthesis and biodegradation by *Fusarium solani* and *Aspergillus fumigatus* cutinases. *Int. J. Biol. Macromol.* **104**, 1238–1245
- Seman, W. M. K. W., Bakar, S. A., Bukhari, N. A., Gaspar, S. M., Othman, R., Nathan, S., Mahadi, N. M., Jahim, J., Murad, A. M. A., and Bakar, F. D. A. (2014) High level expression of *Glomerella cingulata* cutinase in dense cultures of *Pichia pastoris* grown under fed-batch conditions. *J. Biotechnol.* **184**, 219–228
- Liu, Z., Gosser, Y., Baker, P. J., Ravee, Y., Lu, Z., Alemu, G., Li, H., Butterfoss, G. L., Kong, X.-P., Gross, R., and Montclare, J. K. (2009) Structural and functional studies of *Aspergillus oryzae* cutinase: Enhanced thermostability and hydrolytic activity of synthetic ester and polyester degradation. *J. Am. Chem. Soc.* **131**, 15711–15716
- West, N. P., Chow, F. M. E., Randall, E. J., Wu, J., Chen, J., Ribeiro, J. M. C., and Britton, W. J. (2009) Cutinase-like proteins of *Mycobacterium tuberculosis*: Characterization of their variable enzymatic functions and active site identification. *FASEB J.* **23**, 1694–1704
- Nyysölä, A., Pihlajaniemi, V., Järvinen, R., Mikander, S., Kontkanen, H., Kruus, K., Kallio, H., and Buchert, J. (2013) Screening of microbes for novel acidic cutinases and cloning and expression of an acidic cutinase from *Aspergillus niger* CBS 513.88. *Enzyme Microb. Technol.* **52**, 272–278
- Tölgo, M., Hüttner, S., Rugbjerg, P., Thuy, N. T., Thanh, V. N., Larsbrink, J., and Olsson, L. (2021) Genomic and transcriptomic analysis of the thermophilic lignocellulose-degrading fungus *Thielavia terrestris* LPH172. *Biotechnol. Biofuels* **14**, 131
- Hüttner, S., Nguyen, T. T., Granchi, Z., Chin, A. W. T., Ahrén, D., Larsbrink, J., Thanh, V. N., and Olsson, L. (2017) Combined genome and transcriptome sequencing to investigate the plant cell wall degrading enzyme system in the thermophilic fungus *Malbranchea cinnamomea*. *Biotechnol. Biofuels* **10**, 265
- Chen, S., Tong, X., Woodard, R. W., Du, G., Wu, J., and Chen, J. (2008) Identification and characterization of bacterial cutinase. *J. Biol. Chem.* **283**, 25854–25862
- Ekici, O. D., Paetzel, M., and Dalbey, R. E. (2008) Unconventional serine proteases: Variations on the catalytic Ser/His/Asp triad configuration. *Protein Sci.* **17**, 2023–2037
- Khayat, R., Batra, R., Massariol, M. J., Lagacé, L., and Tong, L. (2001) Investigating the role of histidine 157 in the catalytic activity of human cytomegalovirus protease. *Biochemistry* **40**, 6344–6351
- Chen, S., Su, L., Billig, S., Zimmermann, W., Chen, J., and Wu, J. (2010) Biochemical characterization of the cutinases from *Thermobifida fusca*. *J. Mol. Catal. B: Enzym.* **63**, 121–127
- Khan, F. I., Lan, D., Durrani, R., Huan, W., Zhao, Z., and Wang, Y. (2017) The lid domain in lipases: Structural and functional determinant of enzymatic properties. *Front. Bioeng. Biotechnol.* **5**, 16
- Roussel, A., Amara, S., Nyysölä, A., Mateos-Diaz, E., Blangy, S., Kontkanen, H., Westerholm-Parvinen, A., Carrière, F., and Cambillau, C. (2014) A cutinase from *Trichoderma reesei* with a lid-covered active site and kinetic properties of true lipases. *J. Mol. Biol.* **426**, 3757–3772

34. Araújo, R., Silva, C., O'Neill, A., Micaelo, N., Guebitz, G., Soares, C. M., Casal, M., and Cavaco-Paulo, A. (2007) Tailoring cutinase activity towards polyethylene terephthalate and polyamide 6,6 fibers. *J. Biotechnol.* **128**, 849–857
35. Graça, J., and Lamosa, P. (2010) Linear and branched poly(ω -hydroxyacid) esters in plant cutins. *J. Agric. Food Chem.* **58**, 9666–9674
36. Kakaei, K., Esrafil, M. D., and Ehsani, A. (2019) Chapter 1 - Introduction to catalysis. In: Kakaei, K., Esrafil, M. D., Ehsani, A., eds. *Interface Science and Technology*, Elsevier, Amsterdam: 1–21
37. Longhi, S., and Cambillau, C. (1999) Structure-activity of cutinase, a small lipolytic enzyme. *Biochim. Biophys. Acta* **1441**, 185–196
38. Edgar, R. C. (2004) Muscle: Multiple sequence alignment with high accuracy and high throughput. *Nucleic Acids Res.* **32**, 1792–1797
39. Trifinopoulos, J., Nguyen, L.-T., von Haeseler, A., and Minh, B. Q. (2016) W-IQ-TREE: A fast online phylogenetic tool for maximum likelihood analysis. *Nucleic Acids Res.* **44**, W232–W235
40. Letunic, I., and Bork, P. (2019) Interactive tree of life (iTOL) v4: Recent updates and new developments. *Nucleic Acids Res.* **47**, W256–W259
41. Gasteiger, E., Hoogland, C., Gattiker, A., Duvaud, S.e., Wilkins, M. R., Appel, R. D., and Bairoch, A. (2005) Protein identification and analysis tools on the ExpASY server. In: Walker, J. M., ed. *The Proteomics Protocols Handbook*, Humana Press, Totowa, NJ: 571–607
42. Kodama, Y., Masaki, K., Kondo, H., Suzuki, M., Tsuda, S., Nagura, T., Shimba, N., Suzuki, E.-i., and Iefuji, H. (2009) Crystal structure and enhanced activity of a cutinase-like enzyme from *Cryptococcus sp.* strain S-2. *Proteins* **77**, 710–717
43. [dataset] Lu, A., Gosser, Y., Montclare, J. K., Liu, Z., Kong, X. (2012) Structure of *Fusarium Solani* cutinase expressed in *Pichia pastoris*, crystallized in the presence of paraoxon. Protein Data Bank. 3QPC.
44. Davies, K. A., De Lorono, I., Foster, S. J., Li, D., Johnstone, K., and Ashby, A. M. (2000) Evidence for a role of cutinase in pathogenicity of *Pyrenopeziza brassicae* on brassicas. *Physiol. Mol. Plant Pathol.* **57**, 63–75
45. Fedorova, N. D., Khaldi, N., Joardar, V. S., Maiti, R., Amedeo, P., Anderson, M. J., Crabtree, J., Silva, J. C., Badger, J. H., Albarrac, A., Angiuoli, S., Bussey, H., Bowyer, P., Cotty, P. J., Dyer, P. S., et al. (2008) Genomic islands in the pathogenic filamentous fungus *Aspergillus fumigatus*. *PLoS Genet.* **4**, e1000046
46. Soliday, C. L., Flurkey, W. H., Okita, T. W., and Kolattukudy, P. E. (1984) Cloning and structure determination of cDNA for cutinase, an enzyme involved in fungal penetration of plants. *Proc. Natl. Acad. Sci. U. S. A.* **81**, 3939–3943
47. Masaki, K., Kamini, N. R., Ikeda, H., and Iefuji, H. (2005) Cutinase-like enzyme from the yeast *Cryptococcus sp.* strain S-2 hydrolyzes polylactic acid and other biodegradable plastics. *Appl. Environ. Microbiol.* **71**, 7548–7550