



Moisture Control Strategies of Habitable Basements in Cold Climates

Downloaded from: <https://research.chalmers.se>, 2026-04-05 07:54 UTC

Citation for the original published paper (version of record):

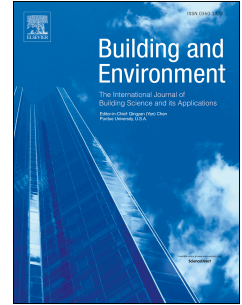
Asphaug, S., Kvande, T., Time, B. et al (2020). Moisture Control Strategies of Habitable Basements in Cold Climates. *Building and Environment*, 169. <http://dx.doi.org/10.1016/j.buildenv.2019.106572>

N.B. When citing this work, cite the original published paper.

Journal Pre-proof

Moisture Control Strategies of Habitable Basements in Cold Climates

Silje Kathrin Asphaug, Tore Kvande, Berit Time, Ruut H. Peuhkuri, Targo Kalamees, Pär Johansson, Umberto Berardi, Jardar Lohne



PII: S0360-1323(19)30784-X

DOI: <https://doi.org/10.1016/j.buildenv.2019.106572>

Reference: BAE 106572

To appear in: *Building and Environment*

Received Date: 14 June 2019

Revised Date: 22 November 2019

Accepted Date: 25 November 2019

Please cite this article as: Asphaug SK, Kvande T, Time B, Peuhkuri RH, Kalamees T, Johansson P, Berardi U, Lohne J, Moisture Control Strategies of Habitable Basements in Cold Climates *Building and Environment*, <https://doi.org/10.1016/j.buildenv.2019.106572>.

This is a PDF file of an article that has undergone enhancements after acceptance, such as the addition of a cover page and metadata, and formatting for readability, but it is not yet the definitive version of record. This version will undergo additional copyediting, typesetting and review before it is published in its final form, but we are providing this version to give early visibility of the article. Please note that, during the production process, errors may be discovered which could affect the content, and all legal disclaimers that apply to the journal pertain.

© 2019 Published by Elsevier Ltd.

Moisture Control Strategies of Habitable Basements in Cold Climates

Silje Kathrin Asphaug¹, Tore Kvande¹, Berit Time², Ruut H. Peuhkuri³,
Targo Kalamees⁴, Pär Johansson⁵, Umberto Berardi⁶ and Jardar Lohne¹

¹ Department of Civil and Environmental Engineering,
Norwegian University of Science and Technology (NTNU),
Trondheim, NO-7491, Norway

² Department of Architecture, Materials and Structures,
SINTEF Community,
Trondheim, NO-7465, Norway

³ Danish Building Research Institute,
Aalborg University,
Copenhagen, DK-2450 SV, Denmark

⁴ Department of Civil Engineering and Architecture,
Tallinn University of Technology,
Tallinn, EE-19086, Estonia

⁵ Department of Architecture and Civil Engineering,
Chalmers University of Technology,
Gothenburg, SE-412 96, Sweden

⁶ Department of Architectural Science,
Ryerson University,
Toronto, ON M5B 2K3, Canada

* Corresponding author; Silje.Asphaug@sintef.no, +4741184611

Keywords: moisture safety, envelope performance, building practice, national building
recommendation, structures below ground

Highlights

- Comparing moisture control strategies for habitable basements in cold climate nations
- Comparison of national recommendations for habitable basements in new buildings
- Contradictions exist on exterior damp proofing, dimpled membranes and vapour barriers
- The five cold climate countries emphasize ten key challenges differently

Abstract

In many countries with a cold climate, basements are used as dwellings. This presents a major challenge concerning moisture safety design. Climate change is expected to increase the risk of moisture-related damage in basements owing to increasing amounts of stormwater, annual precipitation, and annual temperatures. This study examines the primary moisture control strategies for habitable basements in western cold climate countries by identifying the main differences and similarities in national building recommendations for new buildings. Using Norwegian design guides as a baseline, we identified ten key challenges and compared them with four other cold climate countries' recommendations given by experts in the field of building physics (building science). The results showed that other countries' recommendations differ from those of Norway in various key challenges. However, similar but varying recommendations pertaining to ground surface slopes, drainage layers, drainage pipes, capillary breaking layers in floors, avoiding thermal bridges, airtightness, and ventilation were noted. The key differences pertained to the exterior damp proofing of walls, use and position of dimpled membranes and vapour barriers, and use of permeable thermal insulation. The outcome is that countries emphasise the ten key challenges differently. Although the recommendations have many similarities, the weighting (or prioritizing) distinguishes the five countries' moisture control strategies.

1. Introduction

Moisture control is a fundamental aspect of building design; it involves avoiding the damage caused by moisture and the decay and extra heat loss caused by wet materials. Most importantly, it aims to ensure occupants' health and comfort.

Climate change scenarios predict more frequent and more intense precipitation events with heavy rainfall and rainfall-induced floods in many geographical regions with cold climates [1]. Precipitation during the year might also be distributed differently compared to the current situation. To endure increasing amounts of stormwater alongside the increasing annual precipitation, buildings must be adapted to these loads.

Habitable basements can provide many advantages, e.g., reduced heating- and cooling-demands, maximizing the main living area and providing increased weather protection at exposed sites. In Norway, especially in densely populated areas, utilizing basements for more than just storage is desirable. Moisture-related damages, however, are a major challenge in basements, and likely to increase with climate change [2]. The risk is associated with the increasing amounts of stormwater alongside the increasing annual precipitation and annual temperatures. In many municipalities in Norway, restrictions have also been introduced on roof water runoff, meaning that water no longer can be carried to the municipal stormwater grid, but should be infiltrated/ delayed on site.

Norwegian recommendations for moisture control in habitable basements are provided in the SINTEF Building Research Design Guides [3]. They comply with the performance-based requirements in the Norwegian building code [4] and are an important reference to documented solutions in the technical regulations. The design guides adapt experience and results from practice and research into practical benefits to the construction industry. However, due to both increasing moisture loads and increasing insulation thicknesses in basements, new knowledge, methods, and tools are needed to substantiate and improve current recommendations. These design guides constitute the baseline for an international comparison of cold climate strategies for habitable basements.

93 The aim of this study is to provide an overview of main moisture control strategies for
94 habitable basements in cold climate countries, investigate differences and identify main
95 learning potential.

96
97 The study includes: (1) recommendations for moisture control in habitable (heated) basements
98 in new buildings above the groundwater level, (2) recommendations for the terrain surface
99 next to the building, (3) recommendations for exterior drainage (drainage outside basement
100 walls, floor or foundation), (4) recommendations for thermal insulation, airtightness, damp
101 proofing and moisture protection of walls, floor and the transition in-between and (5)
102 recommendations for the ventilation of indoor air in the basement (as this affects the moisture
103 conditions in the basement envelope). More specifically, ten centres of interest have been
104 identified throughout this research, see Table 1.

105
106 To address these general inquiries, the following research questions are raised:

- 107
108 1. Using Norwegian guidelines as a baseline, how do the western cold climate countries
109 building recommendations differ with regard to habitable basements?
110 2. What main differences and similarities can be identified?
111 3. What main learning potential can be identified?

112 **Limitations**

113 Given the extent of the research field, certain limitations are determined. We do not address:
114 (1) recommendations for rehabilitation, refurbishment, and restoration, (2) recommendations
115 for structures exposed to permanent water pressure, (3) recommendations for interior walls
116 and intermediate floors, (4) recommendations for interior lining (aesthetic recommendations)
117 beyond what concerns the moisture protection/air sealing as this affects the moisture
118 protection ,(5) recommendations for excavation, ground stabilization and other groundwork
119 outside the draining layer and (6) recommendations concerning the structural elements
120 beyond what concerns the moisture conditions, i.e. the elements normally contain moisture
121 that must be able to dry inwards, outwards or both.

122
123 The main national recommendations for habitable basements provided in Appendix A-E are
124 independent of the design of the structural elements unless otherwise specified in the tables.
125 Figure 5-9 illustrates how basements can be designed to meet the national recommendations,
126 hence the structural elements in these figures are just one of several different solutions.

127 **2. Theoretical framework**

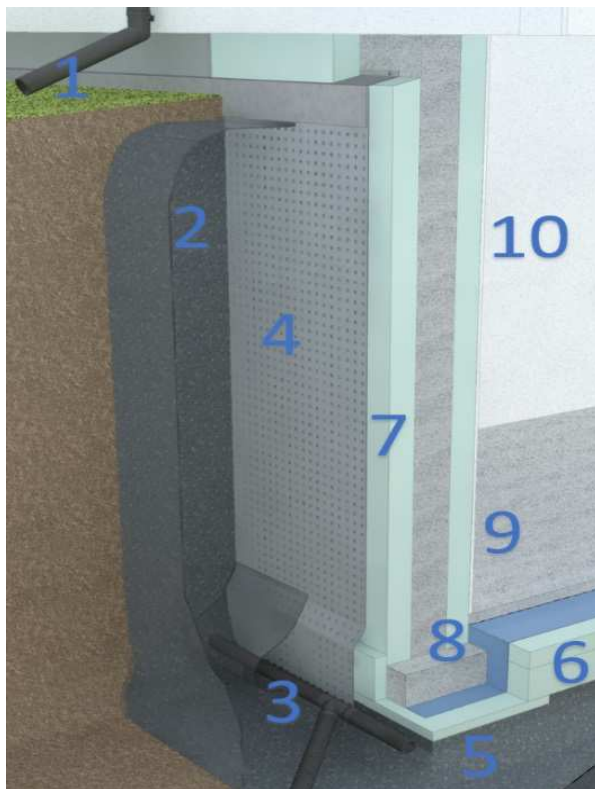
128 The main focus of this chapter is to establish an understanding of moisture control strategies
129 for habitable basements in cold climates based on international research. Arriving at such an
130 understanding is not a straightforward task because:

- 131
132 - recommendations for basements vary according to several factors, e.g. local building
133 practice, local climate, local ground conditions, national regulations, material availability,
134 and economy.
135 - the basement envelope system consists of several elements that separate the indoors from
136 the outdoor environment, both above and below grade, e.g. basement walls (both above
137 and below ground), basement floor slab, joints, intersections, and drainage.

138 - the basement envelope elements consist of several sub-systems, materials, and
 139 components that have many different and sometimes contradicting performance
 140 requirements to fulfil.

141 Our strategy has been to understand the acknowledgment and weighing of different factors
 142 concerning such building elements. The main idea is to articulate how moisture resilience in
 143 habitable basements is sought and ensured in five cold climate countries. The vocabulary
 144 outlined is based on a thorough analysis of the Norwegian SINTEF Building Research Design
 145 Guides [3] and what challenges are found to be the most important there. These design guides
 146 do not, however, constitute any significant limiting factor to the analysis. Rather, they serve
 147 as a point of departure on which the analysis can be made useful. The key challenges can be
 148 defined as in Figure 1.

149



1. Water from rain and snowmelt (including down-pipes).
2. Water pressure on exterior walls below the ground.
3. Water pressure against the construction from a rise of groundwater.
4. Water from the terrain surface or from the ground that reaches the surface of the wall.
5. Capillary rise of moisture from the ground through the floor and foundations.
6. Transfer of water vapour from the ground through the floor
7. Moisture condensation on, and drying capacity of, the basement walls.
8. Thermal bridges.
9. Air leakages (moist air and radon gas) from the ground to the structure and indoor air (walls and floor).
10. High indoor moisture supply from cloth drying, cooking, showering etc.

Figure 1. Key challenges in habitable basements.

150 The literature sources regarding the key challenges differ. More existing literature was found
 151 on the subject of relatively narrow technical fields. These are explained in Table 1. Certain
 152 studies cover the topic in a more general manner [5], [6], [7], [8] and [9]. These broader
 153 studies are to a certain extent included in the table but are also discussed more extensively
 154 below. Some other studies are more concerned with thermal conditions [10], [11], [12] and
 155 [13].

156

157 Table 1. International research sorted on the ten key challenges for habitable basements.

Key challenges	International research for habitable basements
1. Water from rain and snowmelt	- Roof drainage systems [14] (ch. 1, p. 34-35) - Site drainage [14] (p. 28-31) - Site grading [5] (ch. 4.1), [15] (ch. 4.1.1.2) - Infiltration [15] (ch. 4.1.1.3), [16]

	<ul style="list-style-type: none"> - Modelling of stormwater management [17] - Flood protection [18]
2. Water pressure on exterior walls below the ground	<ul style="list-style-type: none"> - Drainage [15] (ch. 4.1.1.4) - Draining backfill [19] - Draining insulation [19] - Moisture in drainage layers [20] - Foundation drainage [14] (ch. 1, p. 34-35)
3. Water pressure against the construction from raising of groundwater	<ul style="list-style-type: none"> - Drain pipes [15] (4.1.1.4) - Ground conditions [21], [19] - Water content distribution beneath building foundations [22] - Flood Risk Associated with Basement Drainage [23]
4. Water from the terrain surface or from the ground that reaches the surface of the wall	<ul style="list-style-type: none"> - Capillary breaking layer, wall [15] (ch.4.1.3.5) - Draining insulation [15] (ch. 4.1.3.5), [24] - Drainage and Capillary Rise in Glass Fibre Insulation [25] - Moisture transfer [26] (ch. 2.4) - Vapour transfer [26] (ch. 2.3)
5. Capillary rise of moisture from the ground through the floor and foundations	<ul style="list-style-type: none"> - Capillary breaking layer, floor [15] (4.1.1.5) - Moisture transfer [26] (ch. 2.4) - Soil material properties [19] - Capillary rise in concrete floors [27]
6. Transfer of water vapour from the ground through the floor	<ul style="list-style-type: none"> - Vapour barrier, floor [15] (3.4.1 and 4.1.2.1) - Heat, air, and moisture conditions of slab-on-ground [28] - Vapour transfer [26] (ch. 2.3) - Thermal performance [10], [29], [30]
7. Moisture condensation on, and drying capacity of the basement walls	<ul style="list-style-type: none"> - Thermal insulation below grade [31], [32], [33], [34], [15] (ch.4.1.3) - Basement Condensation [14] (p. 34-35) - Moisture transfer [26] (ch. 2.4) - Moisture diffusion [35] - Coupled heat and moisture transfer [36] - Moisture/air/vapour/soli gas barrier/retarders [5] (ch. 2.7 & 2.8.) - Surface condensation and drying [26] (ch. 2.3.6.3.) - Heat and moisture flow in soil [37]
8. Thermal bridges	<ul style="list-style-type: none"> - Dynamic modelling of thermal bridges - Thermal bridges [26] (ch. 1.2.3.4 & 1.5.4), [38] (ch. 3.4.1.) - Performance of Rigid Polystyrene Foam Insulation [39]
9. Air leakages (moist air and radon gas) from the ground to the structure and indoor air (walls and floor)	<ul style="list-style-type: none"> - Radon barriers [40] - Radon and moisture infiltration [15] [15] (ch. 4.1.1.7) - Air transfer [26], (ch. 2.2) - Air transfer through the building envelope [38] (ch. 4.2.) - Factors influencing airtightness and airtightness modelling (review) [41] - Dynamic wall system [42] - Radon transport [43], [44]
10. High indoor moisture supply from cloth drying, cooking, showering.	<ul style="list-style-type: none"> - Ventilation of a building [38] (ch. 4.3.), [45] - Ventilation strategies [46], [47] - Indoor moisture supply [48], [49] - Moisture supply [50], [51]

158

159

160

161

Although much research has been done on all the identified key challenges, little work seems to have been done so far on their interrelations. For assessments, national recommendations within chosen cold climate countries have been subjected to scrutiny.

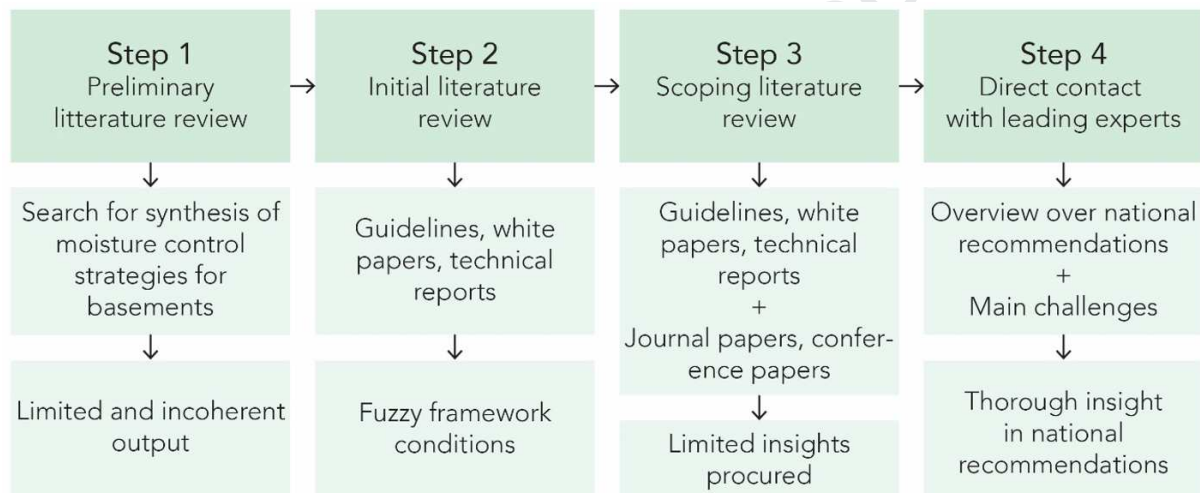
162

163 3. Methodology

164 3.1. Research procedure

165 The methodological approach for the study has been somewhat complex (Figure 2). Related
 166 literature articles could not be found; thus, we established an overview through initial
 167 literature review from February to May 2017. The literature review proved challenging
 168 because little research was found about the subject field. To advance the work, a thorough
 169 scoping literature review was carried out, systematically examining the leading journals
 170 within the field although the outcome was disappointing. The limited insights achieved
 171 indicated the need for a more direct approach. Leading experts from cold climate countries
 172 were directly contacted. These were challenged to provide overviews over main
 173 recommendations within the field for their respective countries. The analysis exposed in this
 174 article is mainly based on these insights provided.

175



176

177

178 *Figure 2. Research procedure.*

179 In the following section, we distinguish between three main sources of information
 180 concerning the overall strategies on the subject of moisture control strategies for habitable
 181 basements. The first is regarding the description of common practice within the different
 182 countries examined. The second concerns the main recommendations for practice from
 183 authoritative sources. The last concerns descriptions of special cases. The analysis of
 184 international literature did not yield information to be characterized as a proper source of
 185 information.

186

187 3.2. Preliminary literature review

188 A preliminary literature review was carried out in February 2017. We first attempted to
 189 identify literature articles about the subject field; the lack of such work initiated an attempt to
 190 establish such an overview through an initial literature review. Search words, search engines
 191 and databases included in the preliminary literature review are given in Table 2.

192

193 Studies concerning moisture in building parts other than basements, heat and moisture
 194 transport in general, and damage caused by moisture were easily found. Scientific studies

195 dealing directly with moisture control strategies or recommendations for new and habitable
196 basements were harder to find.
197

198 3.3. Initial literature review

199 Considering the limited and incoherent results from the preliminary literature review, a more
200 thorough literature review focusing on official guidelines, white papers, and technical
201 guidelines/reports was carried out in the spring of 2017. In addition to basements, this review
202 has also included recommendations for crawlspaces and slab on the ground.
203

204 The publications identified proved to be highly heterogeneous. From Science Direct, the
205 results were quite limited, i.e. mainly focusing on special foundation cases, new material
206 tryouts or building defects. Using Google and Google Scholar, examples of actual practice
207 were easily found, e.g. drawings and recommendations from material manufacturers. Overall
208 recommendations, however, proved hard to find for most countries. The exception was
209 Denmark where design guides regarding moisture in basements could be found [52] and [53].
210

211 Search words, search engines and databases included in the initial literature review are given
212 in Table 2. The search focused on the following countries;
213 Norway, Sweden, Denmark, Netherland, Belgium, USA, Canada, and Germany.
214

215 3.4. Scoping Literature review

216 Given the unclear national legacy of the results in the initial literature review, a more
217 thorough literature review of scientific publications, reports, drawings, internet pages, and
218 design guides was carried out spring of 2017. The review was carried out as a scoping study
219 according to the prescriptions [54]. As commented by these authors, scoping studies differ
220 from systematic reviews in that they typically do not assess the quality of included studies.
221 This might be considered a significant disadvantage, however, as is further underlined by
222 these authors [54:1], “scoping studies may be particularly relevant with disciplines with
223 emerging evidence”.
224

225 The review was conducted to obtain an overview of recommendations for the moisture control
226 of habitable basements in cold climate countries (Norway, Denmark, Sweden, Belgium,
227 Netherland, Germany, Canada, and the USA.). However, the review showed that it was hard
228 to find relevant information regarding general national recommendations in other countries
229 than in Norway and Denmark. One particular reason for this was that they do not have design
230 guides such as the SINTEF Building Research Design Guides [3], DBRI Guidelines [56] and
231 BYG-ERFA [57]. USA and Canada equally stand out since they have national guidelines
232 covering the topic [14], [5].
233

234 Scientific papers and journal articles generally address special cases (i.e. specific projects and
235 new solutions, measurements, calculations, details), and are therefore not a good source of
236 more general national recommendations. Google and Google Scholar searches were also
237 performed, and it yielded more relevant results; however, the information was of variable
238 quality and thus was not optimal to provide an adequate overview of national
239 recommendations.
240

241 A particular challenge entailed identifying recommendations and guidelines in languages not
242 familiar to the researchers (e.g. Dutch).

243
244 Search words, search engines and databases included in the scoping literature review are
245 given in Table 2.

246
247 *Table 2. Search words and combinations included in the literature review.*

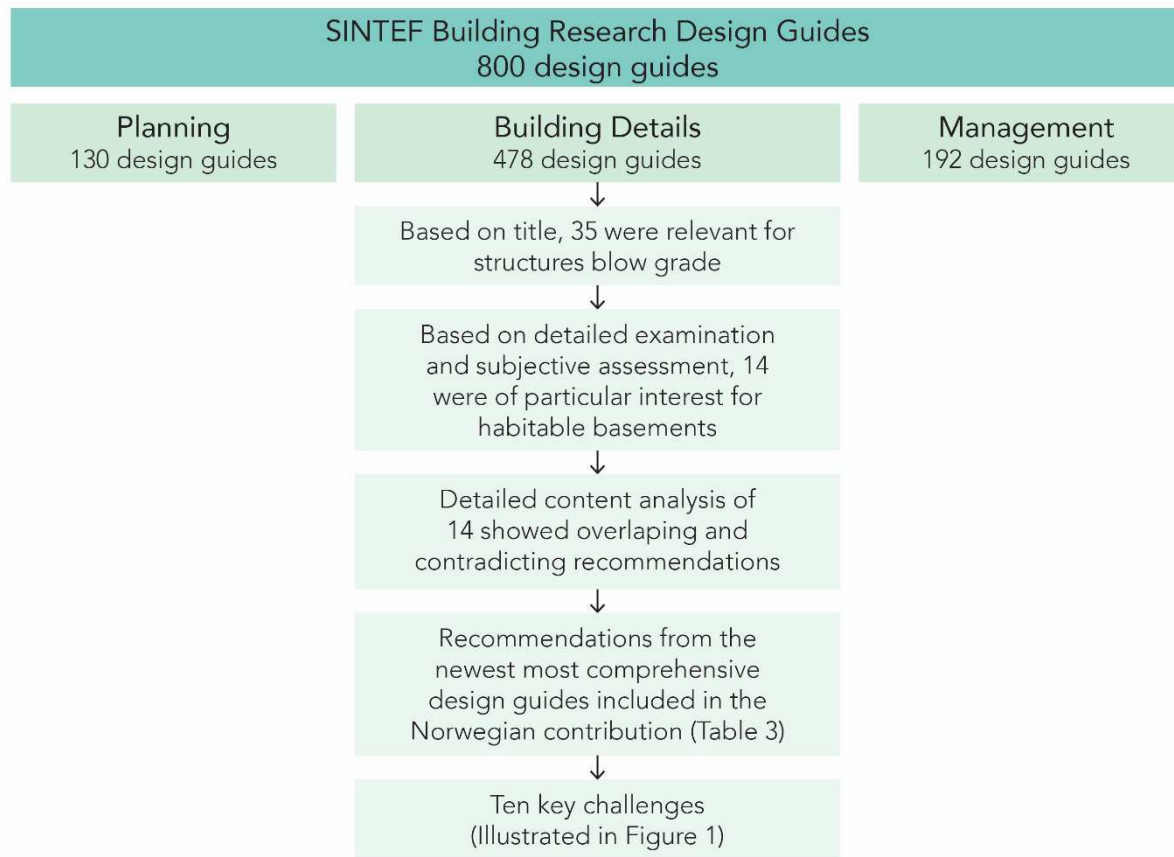
Literature review	Search engines and databases	Search words				
Preliminary (Step 1)	- Science Direct - Oria (Norwegian library database) - Google - Google scholar	basement* (basement, basements), cellar* (cellar, cellars), "foundation wall*" (foundation wall, foundation walls), moisture, moisture safety, "moisture control strateg*" ("moisture control strategy", "moisture control strategies"), design guide*, (design guide, design guides) guideline*, (guideline, guidelines) recommend* (recommend, recommending recommendations).				
Initial (Step 2)	Same as Step 1	basement, "basement wall below ground", "basement wall below grade", "basement wall below-grade", "foundation wall", crawlspace, "slab on ground", "insulated basement", "exterior insulated basement".				
Scoping (Step 3)	Same as Step 1 and Step 2 + Tailor & Francis Online	Different searches combining one search term from each column				
		Search term 1	A	Search term 2	A	Search term 3
		basement* (basement, basements)	N	moisture	N	design guide* (design guide, design guides)
		cellar* (cellar, cellars)	D	moisture safety	D	guideline* (guideline, guidelines)
		"foundation wall*"		"moisture control strateg*"		recommend* (recommend, recommending recommendations)
		"wall* below ground"		("moisture control strategy",)
		"wall* below the ground"		"moisture control strategies")		
		"wall* below grade"				
		"wall* below-grade"				
		"building* below ground"				
		"building* below the ground"				
"building below grade"						
"building below-grade"						

248
249

250 3.5. Assessing the main challenges within the Norwegian context

251 To identify the main challenges for moisture control of habitable basements, a desktop study
252 of recommendation within the Norwegian context was conducted. The object of the study was
253 the SINTEF Building Research Design Guides [3], which provides authoritative guidelines
254 for industry practice.

255
256 The guidelines are very comprehensive in nature, covering almost all the fields of buildings.
257 Providing a sample found relevant for the study was based on a detailed selection process.
258 First, planning and building details titles were distinguished. The building detail series was
259 subsequently scrutinized in detail. For the analysis, habitable basements and year of
260 publication were chosen as selection criteria. This process is illustrated in Figure 3 and
261 resulted in the development of the ten key challenges illustrated in Figure 1.



262
263
264
265

Figure 3. Illustration of the sorting process used for content analysis and final table (Table 1).

266
267
268
269
270
271
272

3.6. Involvement of international experts

The scoping literature survey was conducted to obtain an overview of the recommended solutions. This did not, however, provide a sufficient knowledge base for understanding national recommendations. Therefore, experts within the field of building physics (building science) from countries characterized by cold climates were invited to contribute with detailed information on recommended building practice.

273
274
275
276

Based on the ten key challenges identified in the analysis [3], experts were asked to contribute, with detailed information on recommended building practice in their respective countries, to the following three requirements:

277
278
279
280

1. Describe the key elements and recommendations to achieve optimal moisture safety for habitable basements in new buildings in your country.
2. Attach 1-2 detailed figures that exemplify how these recommendations can be built.
3. Write a short introduction to the use of basements in your country.

281
282
283
284
285

The experts were also given a Norwegian exemplification of the required contribution. The Norwegian exemplification is based on a content analysis [3] according to the prescriptions [58].

The involvement of international experts in the research process is illustrated in Figure 4.



286
287

Figure 4. Detailed illustration of the involvement of international experts.

288

3.7. Choosing leading experts

289

Results and implications are based on contributions from the invited experts.

290

291

When deciding on what experts to involve in the work, selection criteria were established.

292

First, 5 countries, Finland, Denmark, Sweden, Estonia, and Canada, were chosen based on the following selection criteria;

293

294

295

1. Geographical location

296

2. Climatic conditions

297

3. Availability

298

299

Secondly, one expert from the field of building physics (building science) from each respective country was selected according to prior knowledge of their contribution within the field from the originators of the research. The experts were contacted and invited to participate in the analysis. Of the five selected experts, one did not submit his contribution.

300

301

302

303

3.8. Limitations to the analysis

304

Several limitations to the analysis have to be acknowledged. Firstly, within each country, there might exist other main recommendations than those that the expert have included in their contribution. If we could have asked more than one expert from each country, perhaps this source of error could have been less. Secondly, the ten key challenges in the Tables are based on the content analysis [3] and what Norwegians experience as challenges. Initially, we thought other countries would make their own list of challenges, but they all based their contributions on the Norwegian challenges and added none of their own. If we had made the table differently, we might have left one box at the bottom open and asked the experts to add their own challenge(s) if they had any. Thirdly, the expert might have misinterpreted the content of the Norwegian Table.

305

306

307

308

309

310

311

312

313

314

315

Whilst all these limitations might have some bearing on the analysis, their influence does not seem sufficient to significantly undermine the main conclusions presented in this article.

316

317

318

4. Results

319

4.1. Summary of main findings

320

In the following section, the main results sorted by the ten key challenges, see Figure 1, are presented.

321

322

323

#1: Canada recommends that the building shall be located so that water will not accumulate at or near the building. Norway, Denmark, Sweden, and Estonia additionally recommend that the ground surface next to the building is levelled with a slope at a distance of 3 m. Differences in the size of the slope are from 1:20 to 1:50. Norway recommends the sleekest slope (1:50). Denmark additionally recommends that the top layer of the ground should be

324

325

326

327

328 less permeable than the draining layer on the exterior side of the insulation. Estonia
329 recommends a dense covering of the paved surfaces.

330

331 #2: All countries recommend a drainage layer on the exterior side of the basement walls.
332 Norway, Sweden, and Canada recommend free-draining granular backfill or draining
333 insulation. Denmark recommends both. Norway, Denmark, and Sweden additionally
334 recommend a geotextile to protect the draining layers against fine-grained material from the
335 ground. The recommendations for the type and thickness of the drainage layer also has
336 interesting variations. Estonia recommends a drainage layer ≥ 200 mm thick. Sweden
337 recommends a drainage layer ≥ 200 mm thick composed of sand or gravel. Norway
338 recommends either at least 200 mm free-draining granular backfill or draining insulation with
339 the same capacity. Canada recommends either at least 100 mm free-draining granular backfill
340 or ≥ 19 mm mineral fibre insulation. Denmark recommends either special draining insulation
341 boards or standard insulation boards with additional draining boards and an additional layer of
342 > 200 mm backfilling with good draining capacity.

343

344 #3: All countries recommend drainage pipes with some differences in the given details e.g.
345 use of geotextile, pipe-dimension, and position. Norway recommends drainage pipe
346 surrounded by gravel and enclosed by a geotextile, while in Denmark one of these options can
347 be chosen. Sweden recommends drainage pipes with an internal diameter ≥ 70 mm with
348 drainage layers around and a geotextile to protect the draining layer. Canada specifies
349 drainage tile or pipe of ≥ 100 mm diameter with top and side covered with ≥ 150 mm gravel.
350 Estonia recommends that the highest point of the drainage pipe must be at least 0.4m below
351 the lower surface of the slab on ground and that the drainage pipe below the slab on the
352 ground should be below the capillary breaking drainage layer (crushed stone or splinters) and
353 below the lower surface of the basement wall.

354

355 #4: All countries have one or several different recommendations regarding this challenge.
356 They all recommend a water repellent capillary breaking layer of some kind, on the exterior
357 side of the wall or on the exterior side of exterior insulation. However, the material, design,
358 and position vary among the countries. The capillary breaking layer can either be dimpled
359 membranes, some kind of water repellent treatment/rendering or both, or it can be bitumen-
360 saturated membrane. Canada recommends a water repellent layer on the exterior wall surface
361 and a bitumen-saturated membrane where hydrostatic pressure occurs. Denmark recommends
362 that if possible (if not water pressure or extensive water load from rain), the exterior side of
363 the basement wall should be kept diffusion open in order to ensure the drying potential of the
364 wall. Norway recommends dimpled membranes on the exterior side of exterior vapour
365 permeable thermal insulation. In Estonia, dimpled membranes are used more for the
366 protection of insulation. Sweden recommends an additional waterproof membrane from the
367 bottom of the concrete slab and 500 mm up on the outside of the wall.

368

369 #5: All the countries recommend a capillary barrier of some kind in the floor to avoid
370 capillary rise of moisture from the ground, but the type, thickness, and position vary. Sweden
371 recommends a layer of coarse crushed stone material ≥ 150 mm thick and a geotextile. Canada
372 recommends ≥ 100 mm coarse clean granular material beneath the floor. Norway recommends
373 both insulation and ≥ 100 mm thick granular layer below the building and a geotextile if there
374 is a risk of rising groundwater or very soft building ground. Denmark recommends ≥ 150 mm
375 coarse gravel, coated lightweight granular or rigid, pressure-proof insulation. Estonia
376 recommends ≥ 200 mm thick layer of crushed stone or splinters and a geotextile below that
377 layer if the base ground is clay or silt,.

378
379 #6: All the countries have different recommendations regarding water vapour from the ground
380 through the floor. In Denmark, no moisture barrier is needed for the typical construction with
381 reinforced concrete slab, unless moisture-sensitive flooring materials are used. Norway
382 recommends a moisture barrier between the insulation and concrete floor. Canada
383 recommends damp proofing below the floor of $\geq 0,15$ mm PE. If a separate floor is provided
384 over a slab, damp-proofing is permitted to be applied to the top of the slab. In Estonia, it is
385 either recommended to use a moisture barrier between the insulation and the concrete floor
386 (typically PE foil), or not to use a foil to allow dry out the concrete toward the ground.
387 Sweden recommends thermal insulation below the whole concrete slab to protect the
388 foundation from water vapour from the ground. A moisture barrier is normally not
389 recommended except for sensitive flooring material.

390
391 #7: All the countries recommend thermal insulation, but the thickness and position vary
392 among the countries. Recommendations to use or not to use vapour/moisture barriers also
393 vary. In Norway, no moisture barrier is necessary on the interior walls (in normal dry rooms)
394 as long as least 50% of the insulation is on the exterior side of the exterior walls. It is
395 recommended to put the dimpled membranes on the exterior side of exterior vapour
396 permeable insulation to optimize outwards drying. Denmark recommends that all
397 constructions in basements be of inorganic materials and no vapour barrier is recommended in
398 order to ensure drying capacity of the construction. Canada recommends combined
399 interior/exterior insulation for basement walls and if a separate interior finish is to be applied
400 to the foundation wall, a moisture protection layer shall be applied on the interior foundation
401 wall surface to minimize the ingress of moisture from the foundation wall. The common
402 practice in Estonia is to use insulation on the exterior side of the basement wall. Sweden
403 recommends that walls with moisture from the construction process be given the opportunity
404 to become dry by exterior insulation, dimpled membrane or combination of both, and do not
405 recommend a vapour barrier on the interior side of the wall.

406
407 #8: In Canada, thermal bridges in new houses basements are not a common issue, but they
408 tend to be more significant in those basements that are converted in residential spaces to
409 accommodate the increasing urban density and house shortage. Sweden has not given any
410 specific recommendations. Estonia points out the recommended temperature factor to avoid a
411 risk of mould growth [59]; however, it does not give specific recommendations on measures
412 to achieve this. Norway has provided specific recommendations on how to avoid the thermal
413 bridge in the transition between wall and foundation (either minimum of 50 mm insulation
414 below the concrete foundation or applying insulation between wall and floor). Denmark
415 recommends placing insulation on the exterior side of the construction and to reduce the
416 thermal bridge on top of the basement wall by ensuring an overlap of >200 mm for wall
417 insulation and insulation on the exterior side of basement walls.

418
419 #9: All the countries recommend airtightness for constructions against terrain (moisture, heat
420 loss and radon).

421
422 #10: The recommendations for ventilation in basements vary among the countries. In Norway,
423 the recommended fresh air supply for basements is the same as residential dwellings is
424 general, e.g. minimum 1.44 m^3 each hour per m^2 of floor area. The ventilation rates shall be
425 adapted to the contamination and moisture load and can thus be higher. In Sweden, the
426 minimum outlet airflow is a bit lower: 1.26 m^3 per m^2 floor area (converted from 0.35 l/s per
427 m^2 of floor area). In Denmark, ventilation in basements must fulfil normal requirements for

428 air change in dwellings. In Canada each habitable room shall be assigned a fan capacity of
429 5 L/s (18 m³/h) apart from the master bedroom which needs 10 L/s (36 m³/h). To compare
430 with other national recommendations, two examples are provided;

- 431 - Habitable room (floor area from 10 to 30 m²): fan capacity from 1.8 to 0.6 m³/h per m²
432 floor area.
- 433 - Master bedroom (floor area from 10 to 20 m²): fan capacity from 3.6 to 1.8 m³/h per
434 m² floor area.

435

436 4.2. Habitable basements in Norway

437 In Norway, 50% of the residential building stock consists of single-family dwellings. An
438 additional 9% are houses with two dwellings and 12% are row houses, linked house or other
439 small houses [60]. A large proportion of these homes is built with a living space in the
440 basement. Such basements are normally built above the groundwater level with a concrete
441 foundation on a free-draining layer of "gravel". The densest parts of Norway are characterized
442 by frequent freeze-thaw conditions.

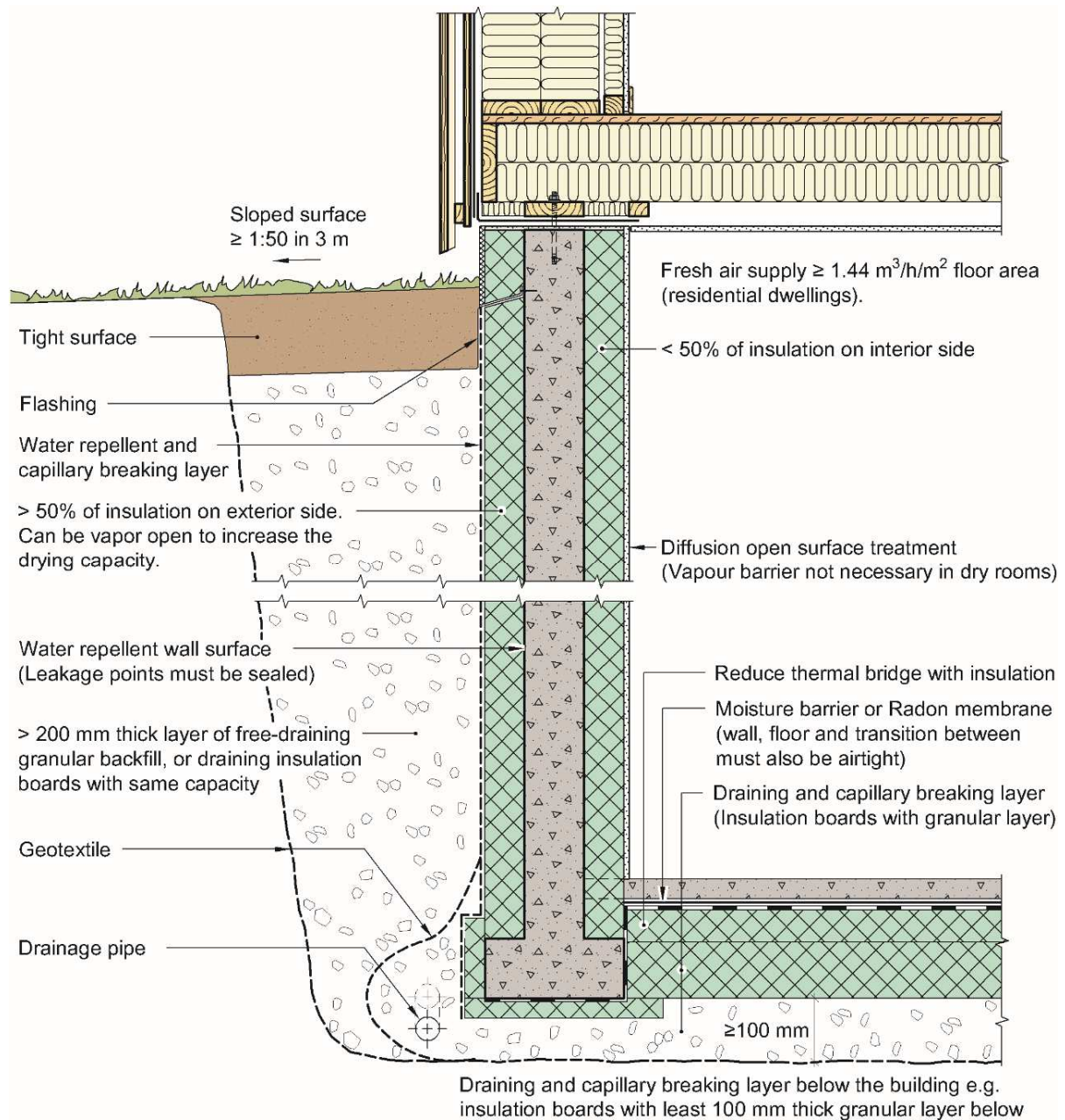
443

444 The identified recommendations for Norway are based on the SINTEF Building Research
445 Design Guides [3]. These consist of 800 design guides that have been produced and
446 continuously updated since 1958. The design guides are the most used planning and design
447 tool amongst Norwegian architects and engineers because they comply with the
448 performance-based requirements in the building code and are an important reference to
449 documented solutions in the technical regulations.

450

451 The main national recommendations for habitable basements in Norway are depicted in
452 Figure 5 and described in detail in Appendix A. According to the view of the authors, Figure
453 5 and Appendix A present the key elements to optimal moisture safety in habitable basements
454 in Norway.

455



456
457

458 *Figure 5. Main recommendations for habitable basements in Norway.*

459 4.3. Habitable basements in Denmark

460 In Denmark, habitable rooms and kitchens must be above ground and therefore no habitation
461 is allowed in basements. For special site conditions, e.g. sloping site, it is possible to have
462 habitable rooms in a basement if the floor lies above ground level along at least one wall with
463 a window. When part of the room is below the ground, a special focus must be paid on the
464 constructions against the ground regarding penetration of moisture and radon.

465
466 In general, basement walls are made of concrete or light-weight concrete blocks. The
467 basement floor is always a concrete slab. Thermal insulation must be placed on the exterior
468 side of the construction and the backfilling must be suitable for draining and preventing
469 capillary rise.

470

471 The main national recommendations for habitable basements in Denmark are depicted in
 472 Figure 6 and described in detail in Appendix B. The basic guidelines about moisture safe
 473 construction principles are found in DBRI Guideline 224 Moisture in buildings [53]. The
 474 other guidelines referred to in Appendix B can be found [56].
 475

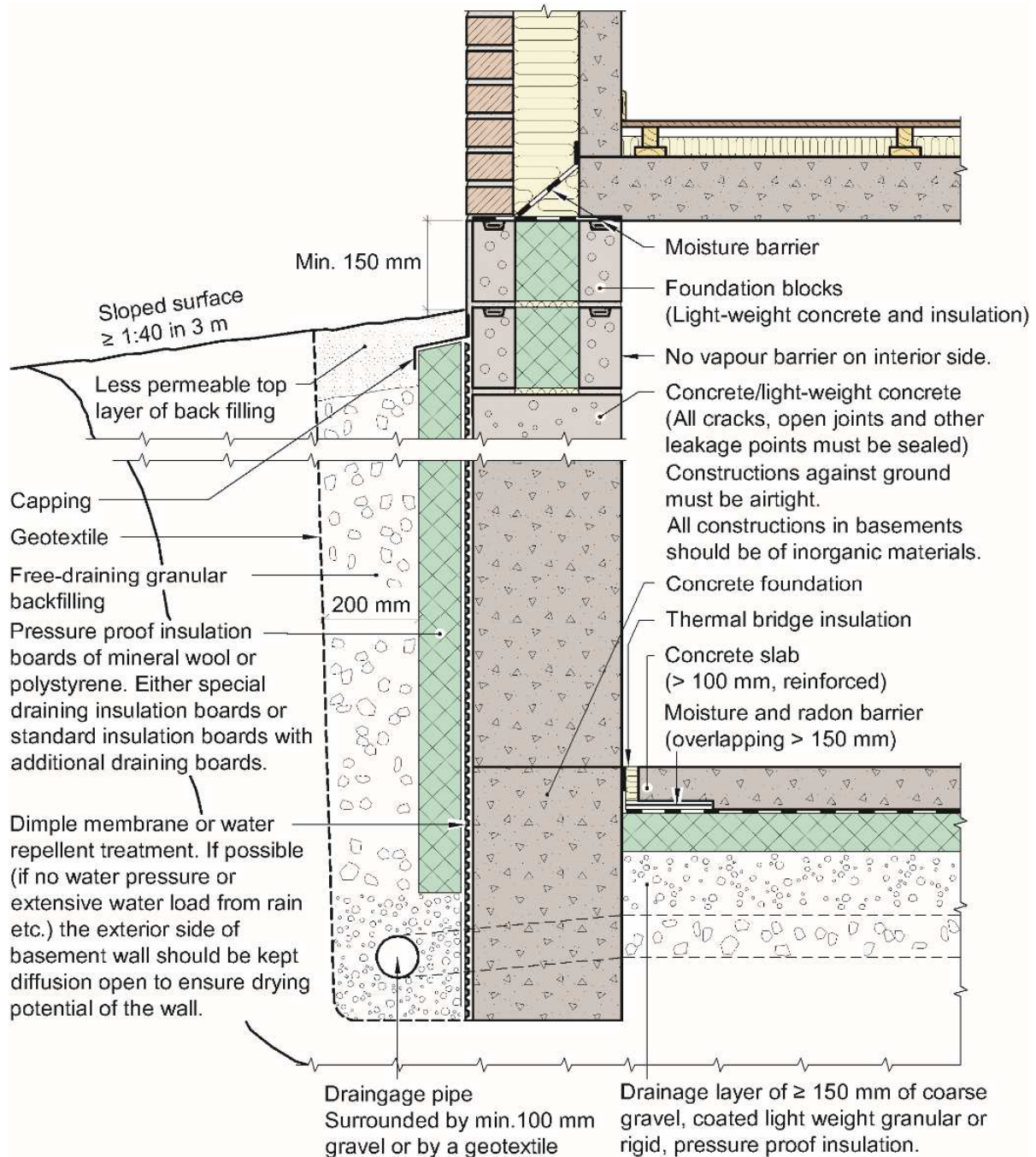


Figure 6. Main recommendations for habitable basements in Denmark (adapted from Figures 35 and 36 in [61]).

476 4.4. Habitable basements in Estonia

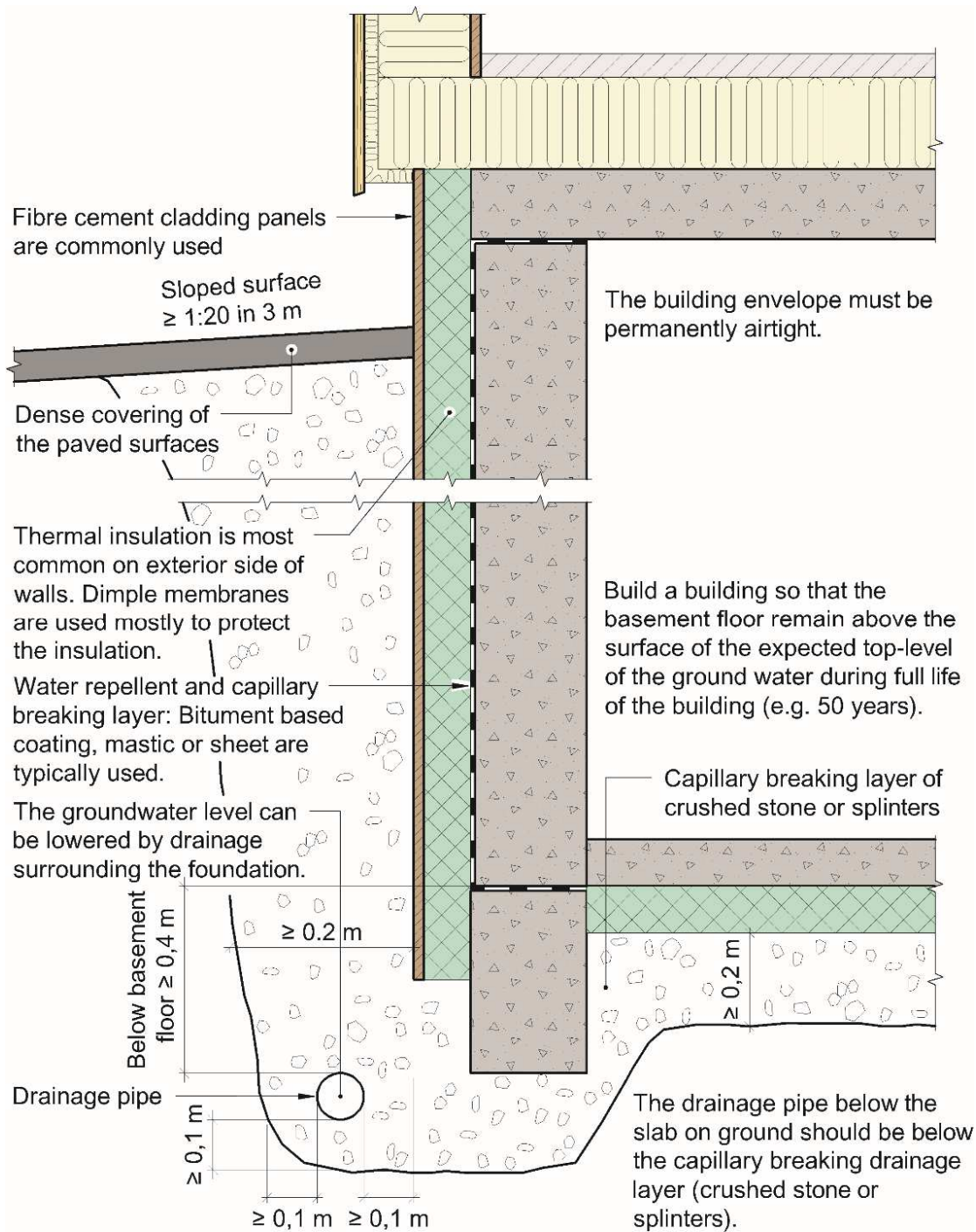
477 In Estonia, residential buildings comprise up to 60% of the total building stock [62].
 478 Apartment buildings account for 51% ($34\,282 \times 10^3 \text{ m}^2$) of the total net area of dwellings. The

479 second large group of dwellings is detached houses with 41% ($26\,447 \times 10^3 \text{ m}^2$) of the total
480 net area of dwellings. The groundwater level is high in Estonia; in most cases, the basement is
481 below. There are no official statistics about buildings with or without a basement. Based on
482 common knowledge nowadays:

- 483 - Detached houses and row houses are mainly built without a basement, mainly because
484 the inhabitants do not need so much storages in the basement; construction below the
485 ground is more expensive, and the foundation does not need to go deeper because
486 solutions exist to prevent frost rise.
- 487 - Apartment buildings and offices typically use basements for garage, technical rooms
488 or for storage.

489 In Estonia, good recommendations and guidelines as in Norway (SINTEF) and in Finland
490 (RT-cards) do not exist. Instead, Estonian designers use quite a lot of Norwegian and Finnish
491 guidelines. It is designer's responsibility and target to fulfil essential requirements on
492 construction and building.

493 The main national recommendations for habitable basements in Estonia are depicted in Figure
494 7 and described in detail in Appendix C.



495

496

497 *Figure 7. Main recommendations for habitable basements in Estonia (adapted from [63]).*

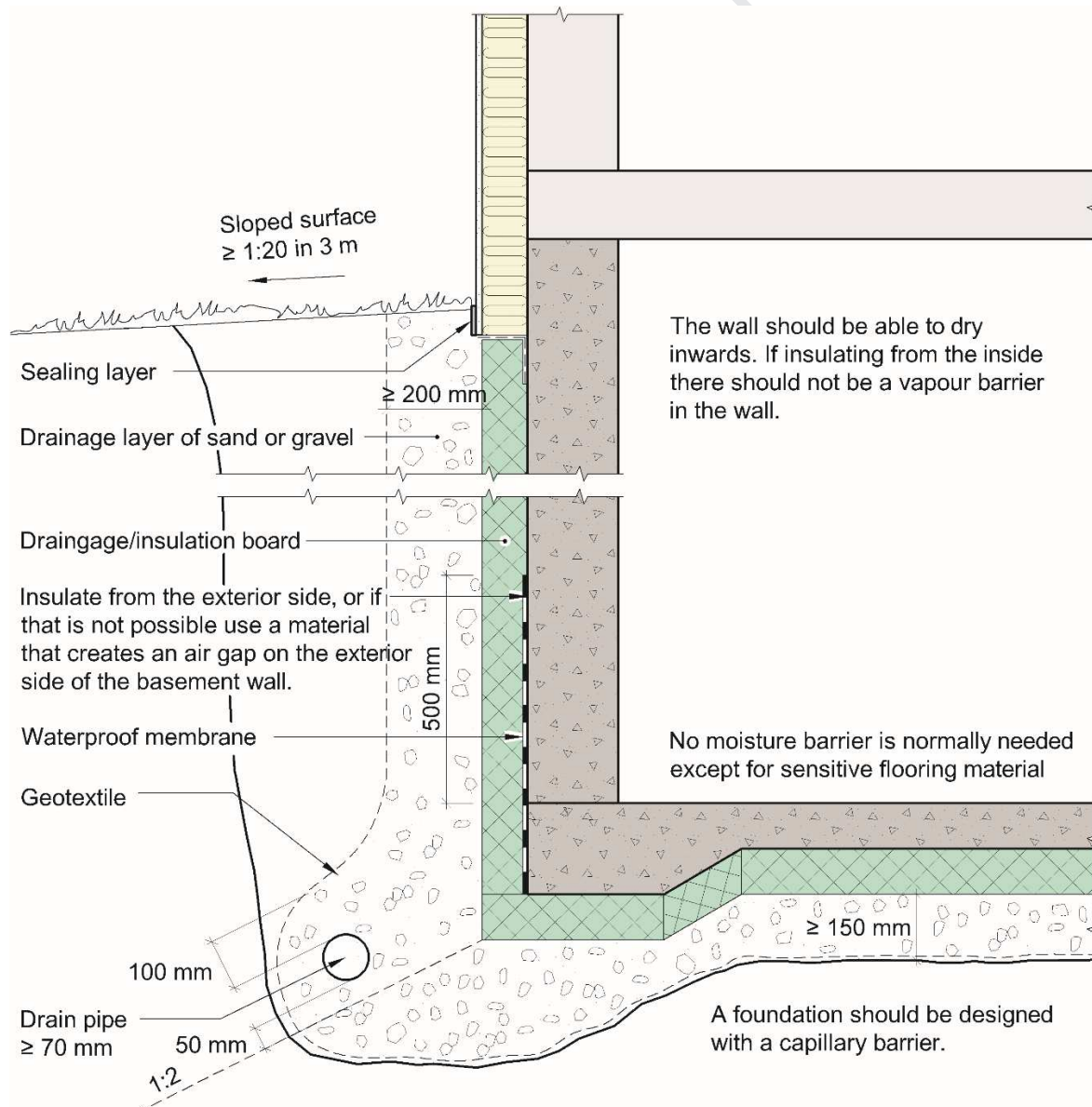
498

499 **4.5. Habitable basements in Sweden**

500 The Swedish building stock consist of 1.2 million single-family houses and 166,000
 501 multi-family buildings. Of the single-family houses, 30% have a basement, as do 50% of the
 502 multi-family buildings. The average U-value for basement walls below grade is $0.74 \text{ W}/(\text{m}^2\text{K})$
 503 and for basement walls above the ground, it is $1.65 \text{ W}/(\text{m}^2\text{K})$. Of the single-family houses,
 504 29% suffered some kind of damage; of the multi-family buildings, 8% suffered damage [64].

505 Around 8% of all basements in Sweden have mould odours [65]. Before the 1970s, basements
 506 were mainly used for storage and not heated, but today it is common to furnish the basement.
 507

508 The Swedish building regulations have been performance-based since the end of the 1980s.
 509 This means the contractor is free to suggest and choose any solutions and construction
 510 techniques as long as the basic performance criteria are fulfilled: 'Buildings shall be designed
 511 to ensure moisture does not cause damage, odours or microbial growth, which could affect
 512 human health'. If the critical moisture level is not well-researched and documented, a relative
 513 humidity (RH) of 75% shall be used as the critical moisture level. The requirements can be
 514 met and verified using moisture safety planning and monitoring of the design to ensure that
 515 the intended moisture safety is achieved. When planning, designing, executing and
 516 monitoring moisture safety, the industry-standard ByggaF – method för fuktsäker
 517 byggprocess (ByggaF – method for moisture safe building process) can be used as guidance
 518 [66]. Buildings, construction materials, and construction products should be protected from
 519 precipitation, moisture, and dirt during the construction period [67]. The main national
 520 recommendations for habitable basements in Swedish are depicted in Figure 8 and described
 521 in detail in Appendix D.
 522



523

524

525 *Figure 8. Main recommendations for habitable basements in Sweden (adapted from Figure*
526 *35 in [24], Figure 4.1.36 and 4.1.34 in [15] and Figure 11 and Typritning nr. 5 in [68].*

527

528 4.6. Habitable basements in Canada

529 Residential construction in the Greater Toronto Area (GTA) has been booming over the last
530 few years. The majority of these houses have been constructed by large “tract” homebuilders
531 in accordance with the Ontario Building Code (OBC). Under such production conditions, the
532 emphasis is placed on achieving the lowest initial capital cost. Many researchers in Canada
533 have looked at detailed construction cost data and floor plans for popular models to assess the
534 value of insulating the basement properly or “upgrading” from Ontario Building Code
535 minimum standards to the R2000 standard. These currently mean:

- 536 - Ontario Building Code: R-6 basement wall insulation to a depth of 0.6 m below grade
537 (obligation)
- 538 - R2000: R-12 full height basement wall insulation (no obligation).

539 Unfortunately, the primary problem in Ontario (and the Greater Toronto Area) is housing
540 booming. Given housing costs, basements are now no longer just used as storage spaces but
541 are often utilized as part of the interior space. Poor moisture management across these walls
542 often leads to mould and mildew growth and poor air quality in basement spaces [69].

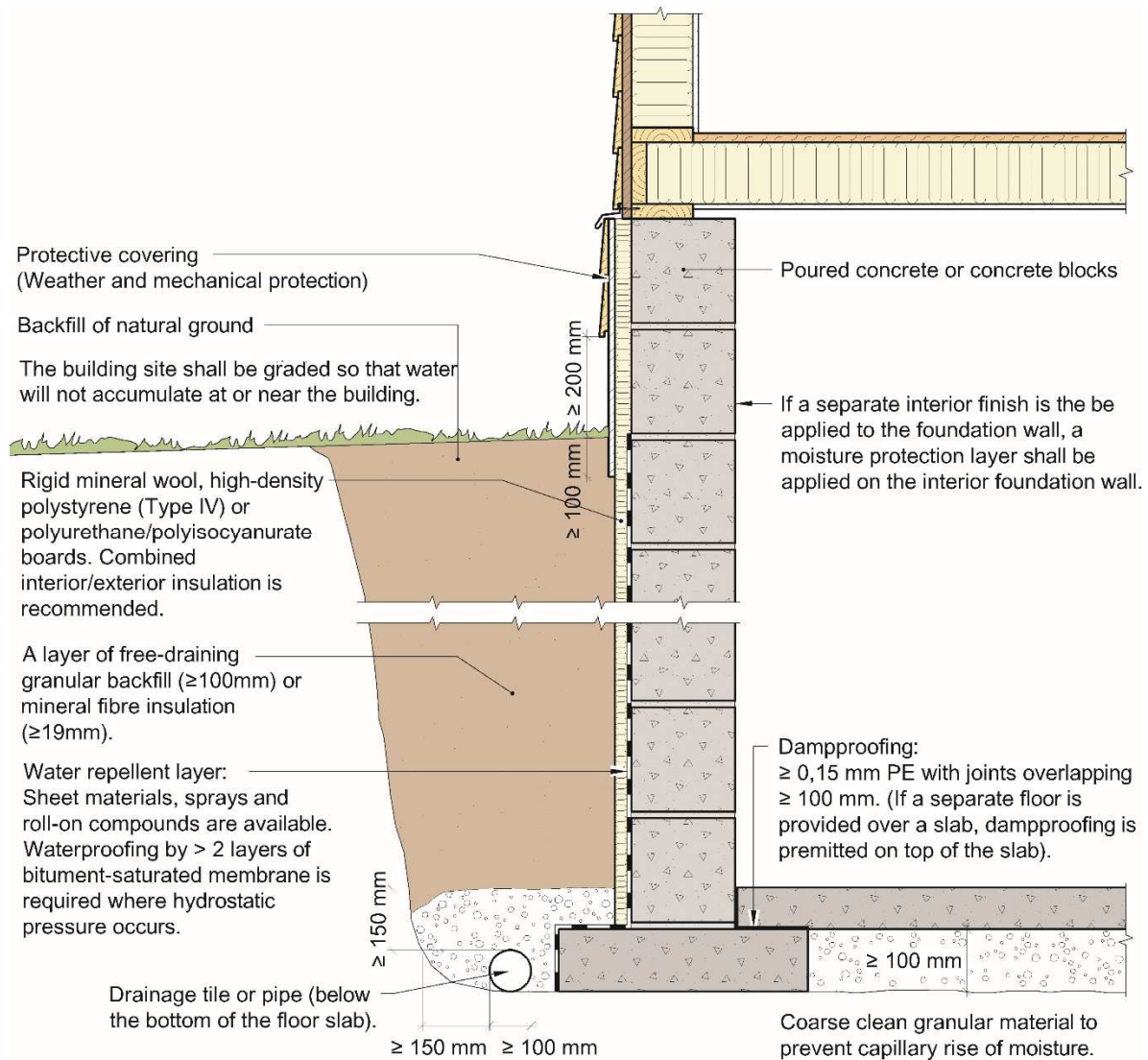
543

544 Nova Scotia does not have a provincial building code. Instead, this province relies on the
545 National Building Code of Canada (NBC). However, the National Building Code does not
546 mandate a minimum value of thermal insulation.

547

548 The main national recommendations for habitable basements in Canada are depicted in Figure
549 9 and described in detail in Appendix E.

550



551
552
553
554
555

Figure 9. Main recommendations for habitable basements in Canada (adapted from [70]).

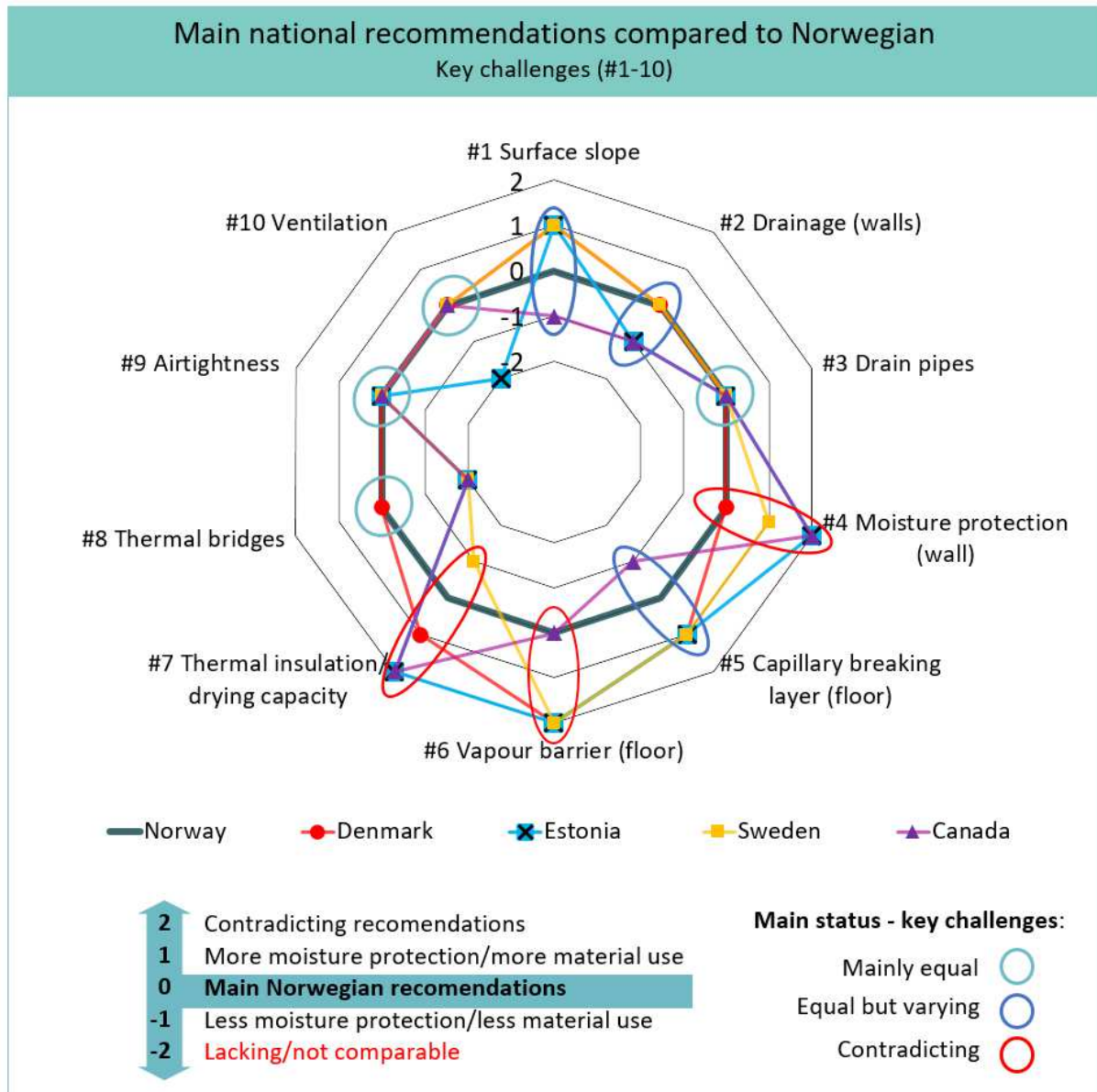
556 5. Discussion

557 5.1. Recommendations for habitable basements

558 In this study, we set out to investigate the differences and similarities in national building
559 recommendations for habitable basements. The Norwegian design guides were used as a
560 baseline to identify main learning potentials concerning moisture control strategies. Ten key
561 challenges (#1-10) have been identified and used in the comparison of the main national
562 recommendations in five western cold climate countries, see Figure 1.

563 5.2. Norwegian recommendations compared to other cold climate countries

564 This study shows that the main national building recommendations in the western cold
565 climate countries differ from the Norwegian at different key challenges, see Figure 10.
566



567
568

569 *Figure 10. Main national building recommendations for habitable basements in cold climate*
570 *countries (red, blue, yellow and purple) compared to Norwegian (grey at level 0) for each of*
571 *the ten key challenges (#1-10, see Figure 1). Recommendations are sorted as either the same*
572 *as Norway (level 0), more moisture safe (level 1), less moisture safe (level -1), contradicting*
573 *(level 2) or lacking (level -2). The figure shows, for each key challenge, where the main*
574 *recommendations are mainly equal (white circle), equal but varying (blue circle) or*
575 *contradicting (red circle).*

576 Danish recommendations have the most in common with the Norwegian, but there are
577 differences regarding (#1), (#5) and (#7) and contradicting recommendations regarding (#6).
578 Sweden has differences regarding (#1), (#4), (#5) and (#7) and contradicting
579 recommendations regarding (#6). Canadian recommendations mainly differ regarding (#1),
580 (#2) and (#5) and had contradicting recommendations regarding moisture protection in walls
581 (#4) and thermal insulation and vapour barrier in walls (#7). Estonian recommendations differ
582 regarding (#1), (#2) and (#5) and are contradicting regarding the use of dimpled membranes
583 (#4), vapour barriers in floors (#6) and dry out capacity (#7).

584
585 Norway also stands out by recommending a diffusion open exterior wall surface, vapour
586 permeable thermal insulation and dimpled membrane positioned on the exterior side of the
587 exterior thermal insulation (#7). This is recommended in order to increase the drying potential
588 of the construction against the exterior [71]. Denmark also recommends that, if possible, the
589 exterior side of the basement wall should be kept diffusion open in order to ensure the drying
590 potential of the wall. However, according to the Danish illustration, the dimpled membrane is
591 positioned between the wall and exterior insulation. Estonia typically uses bitumen-based
592 coating, mastic or sheet on the basement wall surface to prevent water transfer from the
593 ground and into the wall. Dimpled membranes are used mostly to protect the thermal
594 insulation. Estonia also stands out by not having national recommendations such as Norway,
595 but generally base their recommendations on practice.

596
597 Considering only the comparable recommendations provided, the countries have similar and
598 varying but not contradicting recommendations regarding the ground surface slope (#1),
599 drainage layers (#2), drainage pipes (#3), capillary breaking layers in floors (#5), thermal
600 bridges (#8), airtightness (#9) and ventilation (#10). The most interesting variations are found
601 for #1: recommended ground surface slope varying from 1:20 (Sweden and Estonia) to 1:50
602 (Norway) #2: recommended drainage on exterior side of walls vary from ≥ 19 mm mineral
603 fibre insulation (Canada) to special draining insulation boards or standard insulation boards
604 with additional draining boards and a layer of >200 mm backfilling with good draining
605 capacity (Denmark) and #5: recommended capillary breaking layer beneath floor vary from
606 ≥ 100 mm coarse clean granular material (Canada) to 200 mm thick layer of crushed stone or
607 splinters (Estonia) and from ≥ 100 to ≥ 150 mm with additional insulation (Norway/Denmark).

608 5.3. Contradictions

609 The main recommendations have interesting differences regarding water that reaches the
610 surface of the wall (#4), water vapour from the ground through the floor (#6) and partly (#7)
611 moisture condensation on, and drying capacity of, the basement walls. Not surprisingly, this
612 applies to use and position of foundation boards, moisture/vapour barriers/membranes and
613 type, thickness and vapour permeability of thermal insulation in walls and floors.

614
615 More precisely, Norway and Denmark recommend a diffusion open basement wall surface to
616 ensure drying outwards, while Canada and Estonia mainly recommend damp proofing (#4).
617 Sweden recommend a waterproof membrane from the bottom of the concrete slab and 500
618 mm up on the outside of the wall. Canada recommends interior moisture protection, while
619 Norway and Denmark recommend no interior vapour barrier (#7). Norway and Canada
620 recommend a vapour barrier in the floor structure, while in Estonia, some designers
621 recommend no foil and Denmark recommend no moisture barrier unless moisture-sensitive
622 flooring materials are used (e.g. wooden floor) (#6).

623
624 The countries included might have other main national recommendations not included in the
625 expert contributions. This source of error could have been reduced if more than one expert
626 from each country had submitted their version of the main recommendations.

627 5.4. Further research needs

628 Basements used as dwellings represent a major challenge concerning moisture safety design.
629 The risk of moisture-related damage in these constructions is also expected to increase due to
630 climate change. This study shows that cold climate countries recommend different strategies

631 for moisture control in basements. The ten key challenges identified can be considered a basis
632 on which future strategies for optimization of basements can be developed and evaluated.

633

634 This study shows that recommendations concerning ground surface slope (#1), drainage
635 layers in walls (#2) and capillary breaking layers in floors (#5) vary. The risk of moisture
636 damages in vulnerable structures, in particular, might be reduced by combining the strictest of
637 the varying recommendations presented in the study, e.g. steeper surface slope next to the
638 building and thicker draining and capillary breaking layers adjacent and underneath the
639 building.

640

641 It is mainly the recommendations for key challenge #4, #6 and #7 that distinguish the
642 moisture control strategies from each other. This is quite intriguing because barely any
643 research was found in the literature concerning a holistic consideration of their correlation.
644 After comparing the five countries' recommendations, new insight has substantiated the need
645 to answer some general concerns. These include (1) are vapour permeable thermal insulation
646 preferable? (2) can convection or moisture in exterior vapour permeable thermal insulation
647 significantly reduce the heat resistance? (3) can exterior thermal insulation perform as a
648 capillary breaking layer and thus replace the traditional dimple membrane? and (4) what
649 thermal insulation thickness, position, and permeability are favorable?

650

651 Not only can research concerning such subjects provide significantly improved technical
652 solutions; but also, they can imply significant pecuniary reductions.

653

654 6. Conclusion

655 A significant part of this work has been the development of the research methodology to be
656 able to study moisture control strategies in habitable basements in different cold climates
657 countries. Hence, we identified ten key challenges that should be included in national
658 moisture control strategies for such constructions. The study shows that the main national
659 building recommendations in western cold climate countries differ from the Norwegian at
660 different key challenges.

661

662 Considering only the comparable recommendations provided, the countries have similar
663 recommendations regarding drainage pipes (#3), thermal bridges (#8), airtightness (#9) and
664 ventilation (#10). Interesting variations are found regarding the ground surface slope (#1),
665 drainage layers in walls (#2) and capillary breaking layers in floors (#5). Contradicting
666 recommendations are found regarding moisture protection of walls (#4), vapour barriers in
667 floors (#6) and thermal insulation and drying capacity (#7).

668

669 The main learning potential from the review is that the five cold climate countries emphasize
670 the ten key challenges differently. The recommendations have many similarities, but it is this
671 weighing (or prioritizing) that distinguishes the five countries' moisture control strategy from
672 each other. As an example, if a basement wall is protected against water intrusion with a
673 bitumen-based watertight membrane on the exterior surface, exterior drainage might not need
674 to be as efficient. Likewise, one might not have the same need to seal the wall surface if good
675 site drainage, ground surface slope, thick draining layers and exterior vapour permeable
676 thermal insulation provides good drying conditions.

677

678 Yet another consequence of these diverging national recommendations is a challenge for
679 importing/exporting commercial and “well-known” solutions.

680

681 **7. Acknowledgment**

682 The authors gratefully acknowledge the financial support by (1) the Research Council of
683 Norway and several partners through the Centre for Research-based Innovation “Klima 2050”
684 (Grant No 237859) (see www.klima2050.no), (2) The Swedish Research Council Formas
685 (Grant No 2013-1804) through SIREn, the national research environment on sustainable,
686 integrated renovation, (3) The Estonian Research Council with personal research funding
687 PRG483 “Moisture safety of interior insulation, constructional moisture, and thermally
688 efficient building envelope”, and (4) Estonian Centre of Excellence in Zero Energy and
689 Resource Efficient Smart Buildings and Districts (Grant no TK146) funded by the European
690 Regional Development Fund. A special thanks to DAK operator Remy Eik at SINTEF for
691 help with making the illustrations.

692

693

Journal Pre-proof

694 8. References

695

696 [1] I. Hanssen-Bauer, E.J. Fjørland, I. Haddelnad, H. Hisdal, D. Lawrence, S. Mayer, A.
 697 Nesje, J.E.Ø. Nilsen, S. Sandven, A.B. Sandø, Climate in Norway 2100 – a knowledge
 698 base for climate adaptation, NCCS Report No. 1, 2017.

699 [2] K.R. Lisø, G. Aandahl, S. Eriksen, K. Alfsen, Preparing for climate change impacts in
 700 Norway's built environment, *Build Res Inf.* 31(3–4) (2003) 200–209.
 701 doi:10.1080/0961321032000097629.

702 [3] SINTEF Building Research Design Guides (Byggforskserien), (n.d.). www.byggforsk.no.

703 [4] Direktoratet for byggkvalitet, Direktoratet for byggkvalitet, (2017).
 704 <https://dibk.no/byggereglene/byggteknisk-forskrift-tek17/> (accessed September 9, 2019).

705 [5] M.C. Swinton, T.J. Kesik, Performance Guidelines for Basement Envelope Systems and
 706 Materials: Final Research Report, National Research Council Canada, 2005.

707 [6] J. Lstiburek, *Builder's Guide to Cold Climates*, Building Science Corporation, 2006.

708 [7] J. Lstiburek, *BSD-103: Understanding Basements*. Building Science Corporation,
 709 (2006).

710 [8] H.R. Trechsel, M. Bomberg, eds., *Moisture control in buildings: the key factor in mold*
 711 *prevention*, 2nd ed, ASTM International, West Conshohocken, PA, 2009.

712 [9] K. Sandin, *Källare* (informationsskrift i serien: Fuktsäkerhet i byggnader). BFR T-skrift
 713 T8:1999, Byggforskningsrådet (BFR), 1999.

714 [10] A.F. Emery, D.R. Heerwagen, C.J. Kippenhan, D.E. Steele, Measured and Predicted
 715 Thermal Performance of a Residential Basement, *HVAC&R Res.* 13(1) (2007) 39–57.
 716 doi:10.1080/10789669.2007.10390943.

717 [11] S. Zoras, A Review of Building Earth-Contact Heat Transfer, *Adv Build Energy Res.*
 718 3(1) (2009) 289–313. doi:10.3763/aber.2009.0312.

719 [12] K.S. Park, H. Nagai, Study on the Heat Load Characteristics of Underground Structures
 720 Part 2. Computational Analysis of the Heat/Moisture Behavior and Heat Load of
 721 Underground Structures, *J Asian Archit Build.* 6(1) (2007) 189–196.
 722 doi:10.3130/jaabe.6.189.

723 [13] K.-S. Park, H. Nagai, T. Iwata, Study on the Heat Load Characteristics of Underground
 724 Structures: Part 1. Field Experiment on an Underground Structure under an Internal Heat
 725 Generation Condition, *Journal of Asian Architecture and Building Engineering.* 5(2)
 726 (2006) 421–428. doi:10.3130/jaabe.5.421.

727 [14] U.S. Environmental Protection Agency, *Moisture Control Guidance for Building Design,*
 728 *Construction and Maintenance.*, U.S. Environmental Protection Agency, 2013.
 729 <https://www.epa.gov/sites/production/files/2014-08/documents/moisture-control.pdf>
 730 (accessed January 2, 2019).

731 [15] J. Arfvidsson, L.-E. Harderup, I. Samuelson, *Fukthandbok. praktik och teori*, 4. edition,
 732 *Svensk Byggtjänst*, Stocholm, 2017.

733 [16] S. Balstad, J. Lohne, T.M. Muthanna, E. Sivertsen, Seasonal variations in infiltration in
 734 cold climate raingardens – a case study from Norway, *Vann.* 1 (2018) 5–14.

735 [17] L. Salvan, M. Abily, P. Gourbesville, J. Schoorens, Drainage System and Detailed
 736 Urban Topography: Towards Operational 1D-2D Modelling for Stormwater
 737 Management, *Procedia Eng.* 154 (2016) 890–897. doi:10.1016/j.proeng.2016.07.469.

738 [18] G.P. Bouchard, Large Storm Relief Tunnel for Basement Flood Protection, in: *1st*
 739 *International Conference, Water Resources Engineering*, San Antonio, Texas, 1995: pp.
 740 1086–90.

741 [19] S. Pallin, M. Kehler, Hygrothermal simulations of foundations: Part 1: Soil material
 742 properties, *Build Phys.* 37(2) (2013) 130–152. doi:10.1177/1744259112467526.

- 743 [20] J. Rantala, V. Leivo, Thermal and moisture parameters of a dry coarse-grained fill or
 744 drainage layer, *Constr Build Mater.* 21(8) (2007) 1726–1731.
 745 doi:10.1016/j.conbuildmat.2006.05.016.
- 746 [21] A. Patel, *Geotechnical Investigations and Improvement of Ground Conditions*, Elsevier
 747 Inc, 2019. doi:10.1016/C2018-0-01307-9.
- 748 [22] J. González-Arteaga, M. Moya, Á. Yustres, J. Alonso, O. Merlo, V. Navarro,
 749 Characterisation of the water content distribution beneath building foundations,
 750 *Measurement.* 136 (2019) 82–92. doi:10.1016/j.measurement.2018.12.054.
- 751 [23] A.R. Ladson, J. Tilleard, Reducing Flood Risk Associated with Basement Drainage,
 752 *Australas J Water Resour.* 17(1) (2013) 101–104.
 753 doi:10.7158/13241583.2013.11465423.
- 754 [24] S. Pallin, *Risk Assessment of Hygrothermal Performance - Building Envelope Retrofit*,
 755 PhD Thesis, Chalmers University of Technology, 2013.
- 756 [25] J. Timusk, L.M. Tenende, Mechanism of Drainage and Capillary Rise in Glass Fibre
 757 Insulation:, *J Therm Insul.* 11(4) (2016) 231–241. doi:10.1177/109719638801100403.
- 758 [26] H. Hens, *Building Physics - Heat, Air and Moisture: Fundamentals and Engineering*
 759 *Methods with Examples and Exercises*, John Wiley & Sons, 2012.
- 760 [27] R.W. Day, Moisture Migration through Concrete Floor Slabs, *Journal of Performance of*
 761 *Constructed Facilities.* 6 (1992) 46–51. doi:10.1061/(ASCE)0887-3828(1992)6:1(46).
- 762 [28] J. Rantala, V. Leivo, Heat, Air, and Moisture Control in Slab-on-ground Structures, *J*
 763 *Build Phys.* 32(4) (2009) 335–353. doi:10.1177/1744259108093919.
- 764 [29] Y. Wang, C. Jiang, Y. Liu, D. Wang, J. Liu, The effect of heat and moisture coupling
 765 migration of ground structure without damp-proof course on the indoor floor surface
 766 temperature and humidity: Experimental study, *Energ Buildings.* 158 (2018) 580–594.
 767 doi:10.1016/j.enbuild.2017.10.064.
- 768 [30] R.W. Day, Moisture Penetration of Concrete Floor Slabs, Basement Walls, and Flat Slab
 769 Ceilings, *Pract Period Struct Des Construct.* 1 (1996) 104–107.
 770 doi:10.1061/(ASCE)1084-0680(1996)1:4(104).
- 771 [31] S. Cai, B. Zhang, L. Cremaschi, Review of moisture behavior and thermal performance
 772 of polystyrene insulation in building applications, *Build Environ.* 123 (2017) 50–65.
 773 doi:10.1016/j.buildenv.2017.06.034.
- 774 [32] S. Cai, B. Zhang, L. Cremaschi, Moisture behavior of polystyrene insulation in below-
 775 grade application, *Energ Buildings.* 159 (2018) 24–38.
 776 doi:10.1016/j.enbuild.2017.10.067.
- 777 [33] M.C. Swinton, W. Meref, M.T. Bomberg, M.K. Kumaran, N. Normandin, In situ
 778 performance evaluation of spray polyurethane foam in the exterior insulation basement
 779 system (EIBS), *Build Environ.* 41(12) (2006) 1872–1880.
 780 doi:10.1016/j.buildenv.2005.06.028.
- 781 [34] W. Meref, M.C. Swinton, M.K. Kumaran, M.T. Bomberg, Three-dimensional analysis of
 782 thermal resistance of exterior basement insulation systems (EIBS), *Build Environ.* 36(4)
 783 (2001) 407–419. doi:10.1016/S0360-1323(00)00022-6.
- 784 [35] G.H. Galbraith, R.C. Mclean, I. Gillespie, J. Guo, D. Kelly, Nonisothermal moisture
 785 diffusion in porous building materials, *Build Res Inf.* 26 (1998) 330–339.
 786 doi:10.1080/096132198369661.
- 787 [36] M. Qin, A. Ait-Mokhtar, R. Belarbi, Two-dimensional hygrothermal transfer in porous
 788 building materials, *Appl Therm Eng.* 30(16) (2010) 2555–2562.
 789 doi:10.1016/j.applthermaleng.2010.07.006.
- 790 [37] L.S. Shen, J.W. Ramsey, An investigation of transient, two-dimensional coupled heat
 791 and moisture flow in the soil surrounding a basement wall, *International Journal of Heat*
 792 *and Mass Transfer.* 31 (1988) 1517–1527. doi:10.1016/0017-9310(88)90259-1.

- 793 [38] C.-E. Hagentoft, Introduction to Building Physics, Lightning Source, 2001.
- 794 [39] J.H. Crandell, Below-Ground Performance of Rigid Polystyrene Foam Insulation:
795 Review of Effective Thermal Resistivity Values Used in ASCE Standard 32-01—Design
796 and Construction of Frost-Protected Shallow Foundations, *Journal of Cold Regions*
797 *Engineering*. 24(2) (2010) 35–53. doi:10.1061/(ASCE)CR.1943-5495.0000012.
- 798 [40] B.P. Jelle, K. Noreng, T.H. Erichsen, T. Strand, Implementation of radon barriers, model
799 development and calculation of radon concentration in indoor air, *J Build Phys*. 34(3)
800 (2011) 195–222. doi:10.1177/1744259109358285.
- 801 [41] M. Prignon, G. Van Moeseke, Factors influencing airtightness and airtightness
802 predictive models: A literature review, *Energ Buildings*. 146 (2017) 87–97.
803 doi:10.1016/j.enbuild.2017.04.062.
- 804 [42] L.E. Lingo, U. Roy, A Ground-Coupled Dynamic Wall System for New and Existing
805 Structures, in: *ASHRAE Transactions* 119, 2013.
- 806 [43] W.W. Nazaroff, H. Feustel, A.V. Nero, K.L. Revzan, D.T. Grimsrud, M.A. Essling, R.E.
807 Toohey, Radon transport into a detached one-story house with a basement, *Atmos*
808 *Environ*. 19(1) (1985) 31–46. doi:10.1016/0004-6981(85)90134-9.
- 809 [44] D. Furrer, R. Cramer, W. Burkart, Dynamics of Rn transport from the cellar to the
810 living area in an unheated house, *Health Phys*. 60(3) (1991) 393–398.
811 doi:10.1097/00004032-199103000-00009.
- 812 [45] A. Mikola, T. Kalamees, T.-A. Kõiv, Performance of ventilation in Estonian apartment
813 buildings, *Energy Procedia*. 132 (2017) 963–968. doi:10.1016/j.egypro.2017.09.681.
- 814 [46] A. Macintosh, K. Steemers, Ventilation strategies for urban housing: lessons from a PoE
815 case study, *Build Res Inf*. 33(1) (2005) 17–31. doi:10.1080/0961321042000322771.
- 816 [47] C. Brown, M. Gorgolewski, Understanding the role of inhabitants in innovative
817 mechanical ventilation strategies, *Build Res Inf*. 43(2) (2015) 210–221.
818 doi:10.1080/09613218.2015.963350.
- 819 [48] S. Ilomets, T. Kalamees, J. Vinha, Indoor hygrothermal loads for the deterministic and
820 stochastic design of the building envelope for dwellings in cold climates, *J Build Phys*.
821 41(6) (2018) 547–577. doi:10.1177/1744259117718442.
- 822 [49] H. Bagge, D. Johansson, Hygrotermiska förhållanden i inomhusluften.
823 Inneklimatmodell, referansdata och pc-program, Svenska Byggbranchens
824 Utvecklingsfonds, 2019.
- 825 [50] S. Pallin, P. Johansson, C.E. Hagentoft, Stochastic Modeling of Moisture Supply in
826 Dwellings based on Moisture Production and Moisture Buffering Capacity, in:
827 *Proceedings of the 12th Conference of the International Building Performance*
828 *Simulation Association.*, Sydney, Australia, 2011: pp. 366–373.
- 829 [51] S. Pallin, P. Johansson, M. Shahari, Development of a Risk Assessment Procedure
830 Applied on Building Physics: Part Two; an Applicability Study, in: *Proceedings of the*
831 *12th International Conference on Building Materials and Components*, Porto, Portugal,
832 2011.
- 833 [52] M.H. Hansen, E. Brandt, M. Vesterlørkke, N. Okkels, Kældervægge og -gulve –
834 fugtsikring og varmeisolering. *Byg-Erfa* (19)151114, (2015).
- 835 [53] E. Brandt, Fugt i bygninger. Statens Byggeforskningsinstitut, SBI Anvisning 224,
836 (2013).
- 837 [54] H. Arksey, L. O'Malley, Scoping studies: towards a methodological framework, *Int J*
838 *Soc Res Methodol*. 8(1) (2005) 19–32. doi:10.1080/1364557032000119616.
- 839 [55] D. Levac, H. Colquhoun, K.K. O'Brien, Scoping studies: advancing the methodology,
840 *Implementation Science*. 5(1) (2010) 69. doi:10.1186/1748-5908-5-69.
- 841 [56] DBRI, DBRI Guidelines, SBI-Anvisninger. Statens Byggeforskningsinstitut, Aalborg
842 University. (2019). <https://sbi.dk/anvisninger/Pages/Start.aspx>.

- 843 [57] BYG-ERFA, Byg På Erfaringer. (n.d.). <https://byg-erfa.dk/> (accessed March 26, 2019).
- 844 [58] R. Weber, Basic Content Analysis. Quantitative Applications in the Social Sciences.,
- 845 SAGE Publications, Inc., Thousand Oaks, 1990. doi: 10.4135/9781412983488 (accessed
- 846 March 26, 2019).
- 847 [59] ISO 13788:2012, Hygrothermal performance of building components and building
- 848 elements -- Internal surface temperature to avoid critical surface humidity and interstitial
- 849 condensation -- Calculation methods, International Organization for Standardization,
- 850 2012.
- 851 [60] Building stock, Statistics Norway. (2017). [https://www.ssb.no/en/bygg-bolig-og-](https://www.ssb.no/en/bygg-bolig-og-eiendom/statistikker/bygningsmasse/aar/2019-02-20)
- 852 [eiendom/statistikker/bygningsmasse/aar/2019-02-20](https://www.ssb.no/en/bygg-bolig-og-eiendom/statistikker/bygningsmasse/aar/2019-02-20).
- 853 [61] E.B. Møller, E. Brandt, E.S. Pedersen, Småhuse - Klimaskærmen Statens
- 854 Byggeforskningsinstitut. Anvisning 267, (2016).
- 855 [62] Estonian National Register of Construction Works, Ehitiregistre. (2010). www.ehr.ee.
- 856 [63] Eesti Ehitusteave, Moisture in buildings (Niiskus Hoonetes) ET-2 0405-0497, (2003).
- 857 [64] Boverket, Energi i bebyggelsen - tekniska egenskaper och beräkningar - resultat från
- 858 projektet BETSI, Boverket, Karlskrona, Sweden, 2010.
- 859 [65] Boverket, Så mår våra hus - redovisning av regeringsuppdrag beträffande byggnaders
- 860 tekniska utformning m.m., Boverket, Karlskrona, Sweden, 2009.
- 861 [66] ByggaF-metoden, Fuktcentrum. (n.d.). [http://www.fuktcentrum.lth.se/verktyg-och-](http://www.fuktcentrum.lth.se/verktyg-och-hjelpmedel/fuktsaekert-byggande/byggaf-metoden/)
- 862 [hjelpmedel/fuktsaekert-byggande/byggaf-metoden/](http://www.fuktcentrum.lth.se/verktyg-och-hjelpmedel/fuktsaekert-byggande/byggaf-metoden/) (accessed April 1, 2019).
- 863 [67] Boverket, Regelsamling för byggande, BFS 2018:4 BBR 26, Boverket, Karlskrona,
- 864 Sweden, 2018.
- 865 [68] Isodrän, Fuktskydd av husgrund - Källarväggar, (2014).
- 866 <https://www.isodran.se/uploads/ed419d820ac218837aed79608398214e.pdf>.
- 867 [69] S. Gray, R.C. Richman, K.D. Pressnail, B. Dong, Low-energy homes: Evaluating the
- 868 economic need to build better now, in: 33rd Annual General Conference of the Canadian
- 869 Society for Civil Engineering, Toronto, Canada, 2005.
- 870 [70] Keeping The Heat In - Chapter 6., Natural Resources Canada. (2016).
- 871 [https://www.nrcan.gc.ca/energy/efficiency/housing/home-improvements/keeping-the-](https://www.nrcan.gc.ca/energy/efficiency/housing/home-improvements/keeping-the-heat-in/basement-insulation/15639)
- 872 [heat-in/basement-insulation/15639](https://www.nrcan.gc.ca/energy/efficiency/housing/home-improvements/keeping-the-heat-in/basement-insulation/15639).
- 873 [71] P. Blom, Konstruksjoner mot grunnen, SINTEF Bokhandel, 2006.
- 874 [72] E. Kokko, Kosteus rakentamissessa: RakMk C2 opas Ympäristöopas, (1999).
- 875 [http://www.ym.fi/download/noname/{E0972376-B12B-4CFA-A3F3-](http://www.ym.fi/download/noname/{E0972376-B12B-4CFA-A3F3-FF191BDF90F9}/130204)
- 876 [FF191BDF90F9}/130204](http://www.ym.fi/download/noname/{E0972376-B12B-4CFA-A3F3-FF191BDF90F9}/130204).
- 877 [73] Reideni Plaat AS - pikaäegsete kogemustega EPS-soojustuse tootja Eestis, (n.d.).
- 878 <https://reideniplaat.ee/> (accessed April 1, 2019).
- 879 [74] EVS-EN-ISO 13788:2012, Hygrothermal performance of building components and
- 880 building elements, Internal surface temperature to avoid critical surface humidity and
- 881 interstitial condensation, Eesti Standardikeskus, 2015.
- 882 [75] Riigi Teataja, Minimum Requirements for Energy Performance. (2012).
- 883 <https://www.riigiteataja.ee/en/eli/ee/VV/reg/520102014001/consolide> (accessed January
- 884 4, 2019).
- 885 [76] EVS-EN 15026:2007, Hygrothermal performance of building components and building
- 886 elements: assessment of moisture transfer by numerical simulation, Eesti
- 887 Standardikeskus, 2015.
- 888 [77] C.M. Oredsson, Boverkets författningssamling BFS 2018:4 - BBR 26, (2018).
- 889 <https://rinfo.boverket.se/BBR/PDF/BFS2018-4-BBR-26.pdf> (accessed November 6,
- 890 2019).
- 891
- 892

893 Appendix A

894

895 *Key challenges and the corresponding main Norwegian recommendations for habitable*
 896 *basements. For references given by brackets see the Reference list of the article.*

Key challenge	Main Norwegian recommendations	[3]
1. Water from rain and snowmelt	Water from rain and snowmelt must be led away from the building. Water from down-pipes can either be directed to a ditch or infiltrated into the terrain. The ground surface next to the building must be levelled with a slope of least 1:50 in a distance of 3 m.	514.221(2009)
2. Water pressure on exterior walls below the ground	A drainage layer, on the exterior side of the exterior walls below the ground, can prevent water pressure on exterior walls created by surface water and water in the ground. A layer of free-draining granular backfill, at least 200 mm thick, or draining insulation boards with at least the same capacity can be used. The drainage layer must be protected against fine-grained material from the ground using a geotextile.	523.111(2015) 514.221(2009) See also: 523.133(2014) 521.011(2005) 523.127(2004)
3. Water pressure against the construction from raising of groundwater	If rising of the groundwater level is a risk or if the ground contains a significant portion of fine-grained material, a drainage pipe surrounded by gravel and enclosed by a geotextile can prevent water pressure against the construction.	514.221(2009) See also: 521.011(2005) 513.131(1999)
4. Water from the terrain surface or from the ground that reaches the surface of the wall	A water repellent and capillary breaking layer on the exterior wall surface can prevent capillary transfer of moisture from the ground and into the wall. Dimple membrane can be used as water repellent and capillary breaking layer. Cracks, open joints, and other leakage points in the walls must be sealed. In addition, a water repellent rendering must be applied on the exterior surface of masonry walls.	523.111(2015) 523.133(2014) 514.221(2009) 523.127(2004) See also: 523.151(2017)
5. Capillary rise of moisture from the ground through the floor and foundations	Capillary rise of moisture from the ground can be prevented by a proper draining and capillary breaking layer below the building. Insulation boards of expanded or extruded polystyrene, with an at least 100-mm-thick granular layer below it, can be used as a capillary breaking layer beneath a concrete floor. If rising groundwater level is a risk or if the building ground is very soft, a geotextile should be placed below the draining layer. Extruded polystyrene with high compressive strength can be used below the foundation.	514.221(2009) 522.111(2003) See also: 572.108(2004) 523.133(2014)
6. Transfer of water vapour from the ground through the floor	A moisture barrier between the insulation and the concrete floor will protect the floor construction against water vapour from the ground.	522.111(2003) 514.221(2009)
7. Moisture condensation on, and drying capacity of, the basement walls	At least 50 % of the insulation (total thermal resistance) should be positioned on the exterior side of the exterior walls to make the walls warmer and dryer. Hence, it will not be necessary to use a moisture barrier on the interior wall in normal dry rooms. To optimize outwards drying, it is recommended to put the dimpled membrane on the exterior side of exterior vapour permeable insulation.	523.111(2015) See also: 523.133(2014) 514.221(2009) 523.127(2004) 521.011(2005)
8. Thermal bridges	The thermal bridge in the transition between wall and foundation can be reduced by applying minimum 50 mm of insulation below the concrete foundation or by applying insulation between wall and floor.	523.111(2015) See also: 471.014(2007) 523.127(2004)
9. Air leakages (moist air and radon gas) from the ground to the structure and	Walls and floors against the terrain must be airtight to avoid the flow of moist air from the ground into the indoor air. Moulded walls of normal concrete can be considered as airtight if intersections, cold joints, and compaction voids are sealed. Masonry walls must be rendered on both the interior and exterior sides. The use of radon membrane in floors and radon	523.111(2015) 520.706(2013) See also: 523.133(2014)

indoor air (walls and floor)	barriers of airtight materials and components in walls below grade will typically ensure the necessary airtightness to avoid flow of moist air.	
10. High indoor moisture supply from cloth drying, cooking, showering etc.	The recommended fresh air supply for residential dwellings is a minimum of 1.44 m ³ each hour per m ² of floor area. The ventilation rates shall be adapted to the contamination and moisture load of the rooms to ensure sufficient air quality and the required fresh air supply can thus be higher.	421.503(2015) See also: 552.301(2015) 552.303(2015) 552.305(2015)

897
898
899

Journal Pre-proof

900 Appendix B

901
902 *Key challenges and the corresponding main Danish recommendations for habitable*
903 *basements. For references given by brackets see the Reference list of the article.*

Key challenges	Main Danish recommendations [53].	DBRI Guideline [number] [56].
1. Water from rain (and snowmelt)	Water on the terrain surface—including runoff from the roof—must be led away from the building by ensuring a sloped (at least 1:40) surface in the first 3 m from the building or a sloped hard surface towards a drain and a drainage around the building in accordance with the guidelines. The top layer of the ground should be less permeable than the draining layer on the exterior side of the insulation to reduce water load from rain (see Figure 6)	224(2013) 255(2015) 258(2017) 267(2016)
2. Water pressure on exterior walls below the ground	Constructions under groundwater level (or with water pressure in general) must have special construction that is watertight.	224(2013)
3. Water pressure against the construction from raising of groundwater	A drainage pipe in the perimeter of the foundation—in combination with the guidelines for protection of the basement wall in #4—is necessary for preventing water pressure on the basement wall. The drainage pipe (min. slope 0,3 %) must be surrounded by a minimum of 100 mm of gravel, see Figure 6, or by a geotextile.	
4. Water from the terrain surface or from the ground that reaches the surface of the wall	<p>The building constructions must be protected against water from outside and water must be led away from the building (see #1).</p> <p>The exterior side of the basement wall must be protected against water uptake: This can be done by applying foundation boards (dimple membranes) or by applying a water repellent treatment (asphalt) or water repellent rendering (or both). All cracks, open joints, and other leakage points must be sealed before. If possible (if there is no water pressure or extensive water load from rain etc.) the exterior side of the basement wall should be kept diffusion open in order to ensure the drying potential of the wall.</p> <p>On the exterior side of the wall, thermal insulation made of pressure proof insulation boards of mineral wool or polystyrene should be installed and protected from the water from above using capping. Either special draining insulation boards or standard insulation boards with additional draining boards should be used, and the draining layer should be protected from the soil using a geotextile. Finally, a layer of > 200 mm backfilling with good draining capacity should be added.</p>	224(2013) 267(2016)
5. Capillary rise of moisture from the ground through the floor and foundations	To prevent capillary rise, there must be a drainage layer of minimum 150 mm thickness of coarse gravel, coated light weight granular or rigid, pressure proof insulation under the basement floor. Drainage pipes should lead any rising water to perimeter drainage.	224(2013)
6. Transfer of water vapour from the ground through the floor	Normally, the vapour pressure below the basement floor is not very high, and therefore, no vapour barrier is needed. However, if moisture sensitive flooring materials are used (e.g. wooden floor), a moisture barrier of > 0.2 mm thickness must be used below the flooring.	224(2013)
7. Moisture condensation on, and drying	To prevent other moisture related problems due to the higher water loads below the ground, all constructions in basements should be made of inorganic materials. See above about wooden flooring.	267(2016)

capacity of, the basement walls	No vapour barrier is recommended on the interior side of the basement walls to ensure the drying capacity of the construction.	
8. Thermal insulation	Thermal insulation of the constructions in a heated basement must fulfil the requirements for the buildings' energy frame. Thermal insulation must be placed on the exterior side of the construction (both basement walls and floor) to keep constructions warm and dry. To reduce the thermal bridge on top of the basement wall, ensure an overlap of >200 mm for wall insulation (typically as cavity insulation) and insulation on the exterior side of basement wall (see Figure 6).	267(2016)
9. Air leakages (moist air and radon gas) from the ground to the structure and indoor air (walls and floor)	Constructions against the ground must be airtight to prevent the infiltration of radon gas. Normally, a concrete slab (>100 mm) with reinforcement will fulfil the airtightness requirement. Airtightness of the connection between basement floor and wall is ensured using a membrane that overlaps >150 mm of the concrete slab.	232(2010) 233(2015)
10. Air change and ventilation	Ventilation in basements must fulfil normal requirements for air change in dwellings. Ventilation can be mechanical or natural.	224(2013)

904

905

906 Appendix C

907

908 *Key challenges and the corresponding main Estonian recommendations for habitable*
909 *basements. For references given by brackets see the Reference list of the article.*

Key challenge	Main Estonian recommendations and design practice	Reference
1. Water from rain and snowmelt	<p>The slope of the ground around the building is levelled away from the building.</p> <p>A suitable ground slope for the first three meters from the building is 1:20 (a difference in height of at least 0.15 m). Water around the building is drained by rainwater drains, drainage, or other appropriate means. When constructing slopes, the rainfall and melting water flowing from above the building are directed to the side of the building without causing damage to neighbouring walls.</p> <p>The access of rainwater and surface water to the drainage system is prevented by a dense covering of the paved surfaces.</p>	Common practice based probably on [72]
2. Water pressure on exterior walls below the ground	<p>Wherever possible, the foundation should be set above the surface water level. Foundation below the level of groundwater complicates construction. During the construction, the water level must be lowered. This may result in damage to the structure of the soil and the subsequent collapse of neighbouring buildings. In most cases, it is necessary to build the structural walls. In the case of aggressive soil water, structural protection is required. Waterproofing (water pressure) or permanent lowering of the water level is required for a basement below the surface water level.</p> <p>In order to avoid damage to groundwater, it is recommended to build buildings such that the basement floor remains above the surface of the expected top-level of the groundwater during their full life (e.g. 50 years). The groundwater level can be lowered by the drainage surrounding the foundation. Drainage planning, however, requires the presence of a sufficiently close and sufficiently low pre-flow. If there is no suitable pre-flow, the building must be raised to the ground. Basement walls must be protected also above the groundwater level against water that flows down the roof or occurs in the melting of snow and falls close to the basement. The waterproofing layers must be positioned in such a way that the pressure of the water is not depressed (on the side of the water in the water) and protected from mechanical damage. The penetrations from the waterproofing must be watertight and must not lose their watertightness owing to the longitudinal movement of the building, pipes and cables, or aging. Even if it is possible to construct the waterproofing, it is hard to achieve because the waterproofing must be uninterrupted and should keep water away as well as a ship's hull; it should not start to leak during the lifetime of the buildings. If the floor of the cellar is below the surface water level, the water pressure can also be pushed and crushed to the floor of the cellar. Therefore, such a floor must be dimensioned specially and, if necessary, it should be reinforced.</p>	[63] (Building information card is the guideline)
3. Water pressure against the construction from raising of groundwater	<p>The harmful capillary flow in the structure or to the structure is prevented by drainage layers and moisture or waterproofing. A drainage layer on the exterior side of the basement wall ≥ 0.2 m should be installed. A drainage pipe surrounded by gravel should be positioned below the foundation.</p> <p>Water should be removed by drainage, by pumping through a well, by a borehole, through a needle filter, or by electro-osmosis. The choice of the system depends on:</p> <ul style="list-style-type: none"> - the geological and hydrogeological conditions of the ground - the solution of the buildings, including the depth of the basement recess and the extent of drainage <p>The risk of increased water levels associated with clogging, freezing etc., must be taken into account. Even if the quality and maintenance of the</p>	We use Finnish practice: [72]
		Estonian design norm.

	drainage system are ensured, sometimes, the possibility of rising water levels should be taken into account and viewed as an emergency load.	
4. Water from the terrain surface or from the ground that reaches the surface of the wall	A waterproof and capillary breaking layer on the basement wall surface prevents water transfer from the ground and into the wall. Bitumen based coatings or mastics or sheets are typically used as a water repellent and capillary breaking layer. Foundation boards (dimple membranes) are used extensively for the protection of insulation. We consider that making them watertight is difficult (owing to cracks, open joints and other leakage points).	
5. Capillary rise of moisture from the ground through the floor and foundations	The basement floor must have drainage to break the water capillary flow and to keep the groundwater level sufficiently distant from the floor. Below the basement floor should be an at least 0.2 m thick layer of crushed stone or splinters to inhibit the capillary rise of ground water. Below that layer should be a geotextile if the base ground is clay or silt.	We follow the Finnish practice.
6. Transfer of water vapour from the ground through the floor	A moisture barrier between the insulation and the concrete floor will protect the floor construction against water vapour from the ground. Here, two different practices are employed. Typically, PE foil is used in slabs on the ground and above the ground between the concrete and insulation. Some designers recommend not to use the foil to allow the concrete to dry out toward the ground. The highest point of the drainage pipe must be at least 0.4 m below the lower surface of the slab on the ground. The drainage pipe below the slab on the ground should be below the capillary breaking drainage layer (crushed stone or splinters). The drainage pipe should be below the lower surface of the basement wall.	
7. Moisture condensation on, and drying capacity of, the basement walls	The common practice is to use insulation on the exterior side of the basement wall (to make the walls warmer and dryer and to avoid interstitial condensation on load bearing structures). To protect insulation, usually, foundation boards (dimple membranes) are used on the exterior side of exterior insulation. It is very common to use EPS 120 or EPS 200 insulation to insulate foundations and basement walls.	Neutral [73]
8. Thermal bridges	The temperature factor of the thermal bridge should be higher than 0.8 to minimize mould growth risk and higher than 0.7 to minimize water vapour condensation risk. This information is obtained from the national appendix of [74].	[74]
9. Air leakages (moist air and radon gas) from the ground to the structure and indoor air (walls and floor)	General requirements the building envelope: <ul style="list-style-type: none"> - The building envelope must be permanently airtight and sufficiently insulated. When determining the insulation suitable for the building, the that factors need to be taken into consideration are the energy performance requirements, the maintenance of a comfortable indoor temperature, and the avoidance of moulds and condensation on thermal bridges, inner surfaces, and structural elements. The average leakage rate of the building envelope may not exceed the value used in the energy calculation performed to prove the building's compliance with the minimum requirements for energy performance. - In general, the average leakage rate of the building envelope may not exceed $1 \text{ m}^3/(\text{h}\cdot\text{m}^2)$. In order to avoid the risk of moisture convection, the critical junctions of the building should be made as airtight as possible. 	Minimum requirements for energy performance: [75]
10. High indoor moisture supply from cloth drying, cooking, showering etc.	In calculations of building envelope to avoid critical surface humidity and interstitial condensation in dwellings, the base value for moisture excess is 6 g/m^3 during the cold period and 2 g/m^3 during summer.	Moisture Excess: [76] and [74]

910
911
912

913 Appendix D

914

915 *Key challenges and the corresponding main Swedish recommendations for habitable*
 916 *basements. For references given by brackets see the Reference list of the article.*

Key challenge	Main Swedish recommendations	[77]
1. Water from rain and snowmelt	To avoid damage to a building from moisture, the adjacent ground surface shall be given an incline to drain away surface water or should be provided with devices to collect and divert surface water, unless the building is designed to withstand water pressure. The slope of the adjacent ground surface should have an incline of 1:20 to a distance of three meters from the building. If it is impossible to create such a slope, a cut-off trench should be provided.	6:5321 Surface water drainage
2. Water pressure on exterior walls below the ground	Buildings not designed to withstand water pressure should have a drainage layer adjacent to and underneath the building as well as around drainage pipes that is permeable enough to collect and drain off the appropriate quantities of water to draining pipes or corresponding systems. This layer should be at least 200 mm thick and composed of sand or gravel. A geotextile is recommended to protect the draining layer. The internal diameter of the drainage pipe should be at least 70 mm. For the base of the wall, an additional waterproof membrane from the bottom of the concrete slab and 500 mm up on the outside of the wall is recommended. Recommendations for drainage can be found in the Swedish Building Centre's handbook [15] (4.1.3.5 and 4.1.1.4.2).	6:5322 Drainage
3. Water pressure against the construction from raising of groundwater	Same as above.	6:5322 Drainage
4. Water from the terrain surface or from the ground that reaches the surface of the wall	Floors, walls, and ceilings subject to splashes of water, wet cleaning, condensation water or high humidity shall have a water-repellent surface layer. Joints should be situated in places which are least subject to water. For penetrations in the floor's water-repellent surface layer, a sealing should be in place to the pipe penetration and the substrate.	6:5332 Water-repellent surface layers
5. Capillary rise of moisture from the ground through the floor and foundations	A foundation should be designed with a capillary barrier. It is recommended to use coarse clean crushed stone material with a minimum thickness of at least 2 times the capillary rise for the material determined by testing. Usually, the thickness of the material is at least 150 mm [14] (4.1.1.5) and a geotextile should be placed below it unless it can be shown that there is not any fine-grained material in the base ground [14] (4.1.1.4.2).	6:5323 Foundation and structural floor
6. Transfer of water vapour from the ground through the floor	Thermal insulation below the whole concrete slab is recommended to protect the foundation from water vapour from the ground. For wide buildings, it can be difficult to achieve a proper temperature gradient through the insulation as the only protection. No moisture barrier is normally needed except for sensitive flooring material [14].	-
7. Moisture condensation on, and drying capacity of, the basement walls	Walls made of materials containing moisture from the construction process, on which fixed moisture-sensitive fittings, etc. are installed, should be given the opportunity to become dry; otherwise, moisture-sensitive materials and products should be protected. If moisture-sensitive material is placed between two tight materials, for example between a vapour barrier and a sealed, water-repellent surface layer, it should be verified that the maximum permitted moisture level for the material has not been exceeded. Key elements and recommendations to achieve optimal moisture safety: - Insulate from the exterior side, or if that is not possible use a	6:5324 Walls, windows and doors etc. 6:5332 Water-repellent surface layers

	<p>material that creates an air gap on the exterior side of the basement wall.</p> <ul style="list-style-type: none"> - If insulating from the inside, there should not be a vapour barrier in the wall, the wall should be able to dry inwards. 	
8. Thermal bridges	-	-
9. Air leakages (moist air and radon gas) from the ground to the structure and indoor air (walls and floor)	<p>To prevent damage due to convection of moisture, the parts of the building that separate spaces with different climatic conditions should have as high airtightness as possible. In most buildings, the risk of convection of moisture is highest in the upper parts of the buildings, i.e., where internal excess pressure may be prevalent. Particular care should be taken to ensure airtightness where the environmental impact of moisture is great such as in public baths or where temperature differences are particularly great. Airtightness can affect the moisture level, thermal comfort, ventilation, and buildings' heat losses. A method for determining air leakage is contained in SS-EN 13829. When determining air leakage, it should also be investigated whether the air leakage is concentrated to a particular building component. If this is the case, there is a risk of moisture damage.</p>	6:531 Airtightness
10. High indoor moisture supply from cloth drying, cooking, showering etc.	<p>Ventilation systems shall be designed to ensure that the required outlet air flow can be supplied to the building. Ventilation systems shall also be able to carry off hazardous substances, moisture, unpleasant odours, and effluents from people and emissions from building materials, as well as pollutants from building works if such inconveniences cannot be carried off in other ways. A minimum outlet air flow equivalent to 0.35 l/s per m² of floor area and continuous exchange of air in the room when it is used shall be pursued.</p>	

917
918
919

920 Appendix E

921
922 *Key challenges and the corresponding main Canadian recommendations for the Greater*
923 *Toronto Area (GTA). For references given by brackets see the Reference list of the article.*

Key challenge	Main Canadian recommendations for GTA	Ontario Building Code
1. Water from rain and snowmelt	The building shall be located and the building site graded such that water will not accumulate at or near the building.	9.14.6
2. Water pressure on exterior walls below the ground	A drainage layer on the exterior side of exterior walls below the ground can prevent water pressure on exterior walls created by surface water and water in the ground. A layer of free-draining granular backfill, at least 100 mm thick, or ≥ 19 mm mineral fibre insulation can be used. Waterproofing by ≥ 2 layers of bitumen-saturated membrane is required for exterior surfaces where hydrostatic pressure occurs.	9.14.2 9.13.3.1 9.13.3.5
3. Water pressure against the construction from raising of groundwater	A drainage tile or pipe of ≥ 100 mm diameter shall be provided at the bottom of the foundation walls so that it is below the bottom of the floor slab. The top and side of the drainage pipe shall be covered with ≥ 150 mm gravel.	5.8.1 9.14.2 9.14.3
4. Water from the terrain surface or from the ground that reaches the surface of the wall	If a separate interior finish is to be applied to the foundation wall, a moisture protection layer shall be applied on the interior foundation wall surface to minimize the ingress of moisture from the foundation wall. A water repellent layer on the exterior wall surface can prevent capillary transfer of moisture from the ground and into the wall.	9.13.2.6
5. Capillary rise of moisture from the ground through the floor and foundations	Beneath the floors-on-ground ≥ 100 mm coarse clean granular material shall be placed to prevent capillary rise of moisture and to enable efficient drainage.	9.16.2
6. Transfer of water vapour from the ground through the floor	Damp proofing below the floor shall consist of $\geq 0,15$ mm PE with joints overlapping ≥ 100 mm in order to protect the floor construction against water vapour from the ground. If a separate floor is provided over a slab, damp proofing is permitted to be applied on the top of the slab.	9.13.2.6
7. Moisture condensation on, and drying capacity of, the basement walls	A combined interior/exterior insulation is recommended for basement walls to ensure higher thermal efficiency and greatly reduce potential of moisture problems.	(CMHC, 1992) 9.25.2.1
8. Thermal bridges	The thermal bridge in the transition between the wall and foundation is not a common issue.	
9. Air leakages (moist air and radon gas) from the ground to the structure and indoor air (walls and floor)	The continuity of the air barrier system throughout the basement is important to prevent air leakages and moist air from the ground. Where methane or radon gases are known to be a problem, the walls and floors shall be constructed to resist the leakage of soil gas.	9.25.3 9.13.4
10. High indoor moisture supply from cloth	Each habitable room shall be assigned a fan capacity of 5 L/s, apart the master bedroom, which needs 10 L/s.	9.32.3.3

drying, cooking, showering etc.		
------------------------------------	--	--

924

Journal Pre-proof

- Comparing moisture control strategies for habitable basements in cold climate nations
- Comparison of national recommendations for habitable basements in new buildings
- Contradictions exist on exterior damp proofing, dimpled membranes and vapour barriers
- The five cold climate countries emphasize ten key challenges differently

Journal Pre-proof

Declaration of interests

The authors declare that they have no known competing financial interests or personal relationships that could have appeared to influence the work reported in this paper.

The authors declare the following financial interests/personal relationships which may be considered as potential competing interests:

Journal Pre-proof