



WISDOM project – V. Resolving molecular gas in Keplerian rotation around the supermassive black hole in NGC 0383

Downloaded from: <https://research.chalmers.se>, 2026-04-06 11:10 UTC

Citation for the original published paper (version of record):

North, E., Davis, T., Bureau, M. et al (2019). WISDOM project – V. Resolving molecular gas in Keplerian rotation around the supermassive black hole in NGC 0383. *Monthly Notices of the Royal Astronomical Society*, 490(1): 319-330.
<http://dx.doi.org/10.1093/mnras/stz2598>

N.B. When citing this work, cite the original published paper.

WISDOM project – V. Resolving molecular gas in Keplerian rotation around the supermassive black hole in NGC 0383

Eve V. North ¹, ¹★ Timothy A. Davis ¹, ¹★ Martin Bureau, ^{2,3} Michele Cappellari ^{1,2}, Satoru Iguchi, ^{4,5} Lijie Liu, ² Kyoko Onishi ^{6,7} Marc Sarzi, ⁸ Mark D. Smith ² and Thomas G. Williams ¹

¹*School of Physics, Astronomy, Cardiff University, Queens Buildings, The Parade, Cardiff CF24 3AA, UK*

²*Sub-department of Astrophysics, Department of Physics, University of Oxford, Denys Wilkinson Building, Keble Road, Oxford OX1 3RH, UK*

³*Yonsei Frontier Lab and Department of Astronomy, Yonsei University, 50 Yonsei-ro, Seodaemun-gu, Seoul 03722, Republic of Korea*

⁴*Department of Astronomical Science, SOKENDAI (The Graduate University of Advanced Studies), Mitaka, Tokyo 181-8588, Japan*

⁵*National Astronomical Observatory of Japan, National Institutes of Natural Sciences, Mitaka, Tokyo 181-8588, Japan*

⁶*Research Center for Space and Cosmic Evolution, Ehime University, Matsuyama, Ehime 790-8577, Japan*

⁷*Department of Space, Earth and Environment, Chalmers University of Technology, Onsala Observatory, SE-439 92 Onsala, Sweden*

⁸*Armagh Observatory and Planetarium, College Hill, Armagh BT61 9DG, UK*

Accepted 2019 September 4. Received 2019 August 13; in original form 2019 June 28

ABSTRACT

As part of the mm-Wave Interferometric Survey of Dark Object Masses (WISDOM), we present a measurement of the mass of the supermassive black hole (SMBH) in the nearby early-type galaxy NGC 0383 (radio source 3C 031). This measurement is based on Atacama Large Millimeter/sub-millimeter Array (ALMA) cycle 4 and 5 observations of the $^{12}\text{CO}(2-1)$ emission line with a spatial resolution of $58 \times 32 \text{ pc}^2$ ($0.18 \text{ arcsec} \times 0.1 \text{ arcsec}$). This resolution, combined with a channel width of 10 km s^{-1} , allows us to well resolve the radius of the black hole sphere of influence (measured as $R_{\text{SOI}} = 316 \text{ pc} = 0.98 \text{ arcsec}$), where we detect a clear Keplerian increase of the rotation velocities. NGC 0383 has a kinematically relaxed, smooth nuclear molecular gas disc with weak ring/spiral features. We forward model the ALMA data cube with the KINEMATIC MOLECULAR SIMULATION (KinMS) tool and a Bayesian Markov Chain Monte Carlo method to measure an SMBH mass of $(4.2 \pm 0.7) \times 10^9 M_{\odot}$, a F160W-band stellar mass-to-light ratio that varies from $2.8 \pm 0.6 M_{\odot}/L_{\odot, \text{F160W}}$ in the centre to $2.4 \pm 0.3 M_{\odot}/L_{\odot, \text{F160W}}$ at the outer edge of the disc and a molecular gas velocity dispersion of $8.3 \pm 2.1 \text{ km s}^{-1}$ (all 3σ uncertainties). We also detect unresolved continuum emission across the full bandwidth, consistent with synchrotron emission from an active galactic nucleus. This work demonstrates that low-J CO emission can resolve gas very close to the SMBH ($\approx 140\,000$ Schwarzschild radii) and hence that the molecular gas method is highly complimentary to megamaser observations, as it can probe the same emitting material.

Key words: galaxies: elliptical and lenticular – galaxies: individual: NGC 0383 – galaxies: ISM – galaxies: kinematics and dynamics – galaxies: nuclei.

1 INTRODUCTION

Early-type galaxies, as gravitationally bound stellar systems, lie on a tight ‘Fundamental Plane’ defined by their mass (luminosity), size (half-light radius) and second velocity moment (velocity dispersion; e.g. Djorgovski & Davis 1987; Dressler et al. 1987). Late-type galaxies follow less tight correlations such as the Tully–Fisher

relation between mass (luminosity) and rotation velocity (Tully & Fisher 1977; see Courteau et al. 2014 and section 4 of Cappellari 2016 for reviews of the fundamental planes of galaxies). Comparing central supermassive black hole (SMBH) mass measurements with these galaxy properties has revealed further relations connecting, for example, bulge mass, stellar mass (or luminosity), or Sérsic concentration index to the SMBH mass (Kormendy & Richstone 1995; Magorrian et al. 1998; Marconi & Hunt 2003; Haering & Rix 2004; Graham 2007). This has led to the prevailing theory that SMBHs, despite their comparatively small masses, are a major influence on galaxy evolution (e.g. Beifiori et al. 2012; van den

* E-mail: northev@cardiff.ac.uk, evienorthy@gmail.com (EVN); DavisT@cardiff.ac.uk (TAD)

Bosch 2016). However, these relations are poorly constrained, with relatively few data points drawn from biased samples, and with large uncertainties. Further evidence indicates both SMBH mass growth at the same rate as (e.g. Mullaney et al. 2012; Madau & Dickinson 2014) and SMBH feedback quenching of (Bundy et al. 2008) star formation. Furthermore, whether all galaxies follow the same relations or not is still inadequately tested. In particular, there is evidence that low-mass late-type and high-mass early-type galaxies follow different co-evolutionary relationships (e.g. McConnell & Ma 2013). Kormendy & Ho (2013) give a comprehensive review of the current state of these relations.

One of the tightest relationships is that between the SMBH mass (M_{BH}) and the stellar velocity dispersion (σ_* ; e.g. Gebhardt et al. 2000; Ferrarese & Merritt 2000), but there is again growing evidence of divergence between galaxies of different morphological types or masses (e.g. McConnell & Ma 2013; van den Bosch 2016, esp. their fig. 2; Krajnović, Cappellari & McDermid 2018). To fully analyse the extent of the co-evolution between all these galaxy properties, it is essential to gather a larger, more diverse, sample of *reliable* SMBH mass estimates (van den Bosch 2016).

Reliability is achieved by directly measuring the SMBH masses through their gravitational influence. Methods to measure SMBH masses dynamically include observing and modelling the stellar kinematics (e.g. Dressler & Richstone 1988; Cappellari et al. 2002; Krajnović et al. 2009), ionized gas kinematics (e.g. Ferrarese et al. 1996; Sarzi et al. 2001; Walsh et al. 2013) and megamaser kinematics (e.g. Miyoshi et al. 1995; Herrnstein et al. 1999; Greene et al. 2010). However, each of these methods can only be used in a small fraction of the galaxy population, as each is biased towards particular morphologies. For instance, stellar kinematics are often hampered by dust contamination and require either resolving individual stars directly or strong absorption lines in integrated spectra. Megamasers probe material very close to the SMBHs but require an edge-on view and are very rare (being present in only ≈ 5 percent of objects searched; Lo 2005). They are typically found in Seyfert 2 and low-ionization nuclear emission region (LINER)-type nuclei of low-mass galaxies. Overall the current sample is biased towards nearby, high surface brightness objects. A new method of measuring SMBH masses is thus required to diversify the sample.

To expand the current sample to all morphological types, galaxy masses and both active and non-active galaxies, our mm-Wave Interferometric Survey of Dark Object Masses (WISDOM) is using a new method exploiting molecular gas observations to trace the velocity fields surrounding SMBHs. The first use of this method with Carbon Monoxide (CO) was by Davis et al. (2013b). SMBH mass measurements in fast-rotator early-type galaxies (Onishi et al. 2017; Davis et al. 2017, 2018), galaxies with irregular gas distributions (Smith et al. 2019), and in the first late-type galaxy with the dense molecular gas tracers HCN and HCO⁺ (Onishi et al. 2015) have been successful. Barth et al. (2016a,b) and Boizelle et al. (2019) also used CO to constrain the SMBH mass in the early-type galaxy NGC 1332 and NGC 3258. Most recently, Combes et al. (2019) used CO(3–2) observations to investigate the molecular tori around seven SMBHs and therefore measure their SMBH masses. Nagai et al. (2019) observed the radial filaments of NGC 1275 in CO(2–1), detecting a rotating disc allowing them to make an SMBH mass estimate, that agrees with the estimate from H₂ observations by Scharwächter et al. (2013).

All these observations can detect the dynamical influence of the SMBH if, as shown in Davis (2014), they have a minimum spatial

resolution of approximately two times the radius of the sphere of influence (R_{SOI}) of the SMBH,

$$R_{\text{SOI}} \equiv \frac{GM_{\text{BH}}}{\sigma_*^2}, \quad (1)$$

where G is the gravitational constant. The use of molecular gas, specifically ¹²CO, reduces the selection biases normally associated with dynamical SMBH mass measurements, because of the wide range of objects with suitable molecular gas discs, and because the high angular resolution required is easily reached by modern interferometers, e.g. the Atacama Large Millimeter/sub-millimeter Array (ALMA). Indeed, molecular discs are found around the centres of galaxies of all morphological types (e.g. Regan et al. 2001; Alatalo et al. 2013). Furthermore, with rotational transitions in the millimetre/sub-millimetre wavebands, CO is observable without dust attenuation.

NGC 0383 (radio source 3C 031; Edge et al. 1959; Bennett 1962) is a well-known radio galaxy (implying the presence of a large SMBH), it has a very regular central dust disc and it is also strongly detected in CO (see Fig. 1 left-hand and right-hand, top panel) with a clear double-horned profile (Lim et al. 2000; Okuda et al. 2005; Ocaña Flaquer et al. 2010). This work presents a measurement of the SMBH mass in this galaxy using ALMA observations of the ¹²CO(2–1) line with a spatial resolution of $58 \times 32 \text{ pc}^2$ ($0.18 \text{ arcsec} \times 0.1 \text{ arcsec}$). In Section 2, we present the target, observations, and data reduction. In Section 3, we describe the dynamical modelling and SMBH mass measurement method. A discussion of the uncertainties and comparisons to other SMBH mass measurement techniques are presented in Section 4. We conclude briefly in Section 5.

2 TARGET: NGC 0383

NGC 0383 is a dusty lenticular galaxy at a distance of $66.6 \pm 9.9 \text{ Mpc}$ (Freedman et al. 2001). It is the brightest galaxy of its group (the NGC 0383 group), part of the Pisces-Perseus Supercluster (Hudson et al. 2001). NGC 0383 hosts a radio-loud active galactic nucleus (AGN) with spectacular radio jets. The coincident radio source is catalogued as 3C 031 (Edge et al. 1959; Bennett 1962). Observations of the jets are presented in MacDonald, Kenderdine & Neville (1968), Bridle & Perley (1984), Laing & Bridle (2002), and van Velzen et al. (2012), whilst the flat-spectrum radio source is described in Healey et al. (2007).

We can estimate the required angular resolution by predicting the R_{SOI} using the SMBH mass upper limit of Beifiori et al. (2009) ($M_{\text{BH}} = 1.1 \times 10^9 M_{\odot}$, corrected to our assumed distance and inclination, see Section 4.4) and σ_* as listed in van den Bosch (2016) ($\sigma_e = 239 \pm 16 \text{ km s}^{-1}$ i.e. σ_* within R_e from Beifiori et al. 2009, corrected following Jorgensen, Franx & Kjaergaard 1995). Using equation (1) with these values, we obtain $R_{\text{SOI}} = 82 \pm 15 \text{ pc}$, indicating we need an angular resolution of better than $\approx 0.5 \text{ arcsec}$ to attempt to detect the dynamical influence of the SMBH (i.e. to resolve $2 R_{\text{SOI}}$; Davis 2014).

There are existing ¹²CO(1–0) observations of NGC 0383 from Lim et al. (2000), Okuda et al. (2005), and in particular single-dish observations from the Thorough ANalysis of radio-Galaxies Observation project (TANGO; Ocaña Flaquer et al. 2010). They report the total molecular gas mass enclosed by the Institut de Radioastronomie Millimétrique (IRAM) 30-m telescope beam to be $M_{\text{H}_2} = (1.7 \pm 0.2) \times 10^9 M_{\odot}$. We correct this from 71.06 Mpc to our assumed distance of 66.6 Mpc, yielding $(1.49 \pm 0.19) \times 10^9 M_{\odot}$ as the total molecular gas mass.

2.1 ALMA observations

The $^{12}\text{CO}(2-1)$ line in NGC 0383 was observed with ALMA on June 21st 2016 at moderate resolution (0.5 arcsec) and then on August 16th 2017 at high resolution (0.1 arcsec), both as part of the WISDOM project (programmes 2015.1.00419.S and 2016.1.00437.S). Configurations C36-5 (baselines 15–704 m) and C40-8 (baselines 21–3637 m) were used to achieve sensitivity to emission on scales up to 4 arcsec, with on-source integration times of 2.22 and 28.8 min, respectively. A 1850 MHz correlator window was placed over the CO(2–1) line and centred at 226.6 GHz, yielding a continuous velocity coverage of $\approx 2000 \text{ km s}^{-1}$ with a raw channel width of $\approx 1.3 \text{ km s}^{-1}$, fully covering and well resolving the line. Three additional low spectral resolution correlator windows were included to detect continuum emission, each of 2 GHz width.

The raw ALMA data were calibrated using the standard ALMA pipeline, as provided by the ALMA regional centre staff. The amplitude and bandpass calibrator used in the two observations was, respectively, J0237+2848 and J2253+1608. The phase calibration used J0057+3021 and J0112+3208, respectively, to determine and therefore correct atmospheric phase offsets.

We then used the COMMON ASTRONOMY SOFTWARE APPLICATIONS (CASA; McMullin et al. 2007) package to combine the two configurations and image the resultant visibilities. A three-dimensional RA–Dec.–velocity data cube was produced with a binned channel width of 10 km s^{-1} . To balance spatial sampling and resolution, pixels of $0.035 \text{ arcsec} \times 0.035 \text{ arcsec}$ were chosen, yielding approximately 5 pixels across the synthesized beam major axis.

The data presented here were produced using Briggs weighting with a robust parameter of 0.5, yielding a synthesized beam full width at half-maximum (FWHM) of $\theta_{\text{maj}} \times \theta_{\text{min}} \approx 0.18 \text{ arcsec} \times 0.1 \text{ arcsec}$ at a position angle of 6.6° . The corresponding spatial resolution is $\approx 58 \times 32 \text{ pc}^2$, so that the predicted R_{SOI} is well resolved with about 2 synthesized beams, i.e. $R_{\text{SOI}} / \sqrt{\theta_{\text{maj}} \times \theta_{\text{min}}} = 1.9$. Continuum emission was detected, measured over the full line-free bandwidth, and then subtracted from the data in the uv -plane using the CASA task UVCONTSUB. The achieved continuum root mean square (rms) noise is $35 \mu\text{Jy beam}^{-1}$. The continuum-subtracted dirty cube was cleaned (see Högbom 1969 for the CLEAN procedure) in interactively-identified regions of source emission in each channel, to a threshold equal to the rms noise of the dirty channels. The clean components were then added back and re-convolved using a Gaussian beam of FWHM equal to that of the dirty beam. This produced the final, reduced and fully calibrated $^{12}\text{CO}(2-1)$ data cube of NGC 0383, with an rms noise level of $0.4 \text{ mJy beam}^{-1}$ in each 10 km s^{-1} channel.

2.2 Line emission

The final data products used in this paper were created from the clean, fully calibrated data cube. Zeroth moment (integrated intensity), first moment (mean velocity), and second moment (velocity dispersion) maps were created using a masked moment technique (e.g. Dame 2011). The mask was generated by taking a copy of the clean cube and smoothing it, first spatially using a Gaussian with FWHM equal to that of the synthesized beam, and then Hanning-smoothing in velocity. The mask selects pixels with an amplitude in the smoothed cube greater than 0.8 times the rms of the unsmoothed data cube. The moments, shown in Figs 2 and 3, are made from the original un-smoothed cube with the mask applied. We note that the masking procedure is only used when creating the moment maps, whilst the fitting is performed on the whole unmasked cube.

A regularly rotating and symmetric molecular gas disc is clearly detected, with no evidence that the disc is disturbed by the strong AGN jets. It extends $\approx 4 \text{ arcsec} \times 6 \text{ arcsec}$ in projection ($\approx 1400 \times 1600 \text{ pc}^2$). There is a slight dip in flux at the centre of the zeroth moment, partially due to our masking procedure removing low surface brightness emission spread over a large number of channels close to the central SMBH. This hole becomes much less significant when a simple clipping procedure is used, although this does increase the noise. The enhanced velocities around the centrally located SMBH are obvious in both the first moment map and the major-axis position–velocity diagram (PVD; Fig. 4), the latter constructed by summing pixels within a 5-pixel wide (0.175 arcsec) pseudo-slit at a position angle of 142° . The position angle used here and derived from the CO observations is reasonably consistent with the optical position angle as listed in the NASA/IPAC Extragalactic Database (NED)¹ of $\approx 150^\circ$. The moment one colourbar and PVD right-hand velocity axis are the observed line-of-sight velocity minus the systemic velocity of $V = 4925 \pm 4 \text{ km s}^{-1}$ derived in Section 3.2. The large velocity dispersion observed at the centre of Fig. 3 is primarily due to beam smearing.

Fig. 5 shows the $^{12}\text{CO}(2-1)$ integrated spectrum, made by integrating over a $6 \text{ arcsec} \times 6 \text{ arcsec}$ area of the clean cube, thus encompassing the entire disc. It clearly shows the double-horn shape of a rotating disc, as also observed by Lim et al. (2000) in both CO(1–0) and CO(2–1) and Okuda et al. (2005) in CO(1–0) only. The total CO(2–1) flux is $87.1 \text{ Jy km s}^{-1}$.

For this work, we want high spatial resolution data and hence use long-baseline interferometric observations. Incomplete uv -plane coverage can thus lead to some flux being resolved out. To check the scale of this problem, we compare the integrated flux derived from our CO(2–1) observations with that of Ocaña Flaquer et al. (2010), obtained with the 30-m IRAM single-dish telescope. Their CO(2–1) flux is $74.4 \pm 2.8 \text{ Jy km s}^{-1}$. As we retrieve slightly more flux than this, and the entire molecular gas disc of NGC 0383 fits within the primary beam of the 30-m telescope, it is unlikely that we resolve out flux in our observations. The lower flux of the single-dish observations may be due to pointing and/or flux calibration errors.

Comparing our CO(2–1) flux of $87.1 \text{ Jy km s}^{-1}$ to that of the CO(1–0) line ($29.8 \text{ Jy km s}^{-1}$; Ocaña Flaquer et al. 2010), we find a CO(2–1)/CO(1–0) ratio of 0.73 after converting to beam temperature units (K km s^{-1}). This ratio is very similar that found by Saintonge et al. (2017) in their mass-selected sample of local galaxies and within the range found by Leroy et al. (2013) for nearby star-forming disc galaxies, indicating the molecular gas in NGC 0383 is similar to that in other local galaxies. The detection of CO line emission provides information about the cold gas mass distribution, that is later incorporated into our modelling (in addition to the kinematics themselves).

2.3 Continuum emission

As mentioned previously, NGC 0383 hosts a radio-loud AGN. We detect a continuum point source at the kinematic centre of the galaxy, with a total integrated intensity of $65.2 \pm 0.1 \text{ mJy}$ at a central frequency of 235.33 GHz. Adding to our flux those tabulated in the NED² at millimetre and radio wavelengths, we constructed a radio–

¹<https://ned.ipac.caltech.edu>

²<https://ned.ipac.caltech.edu>

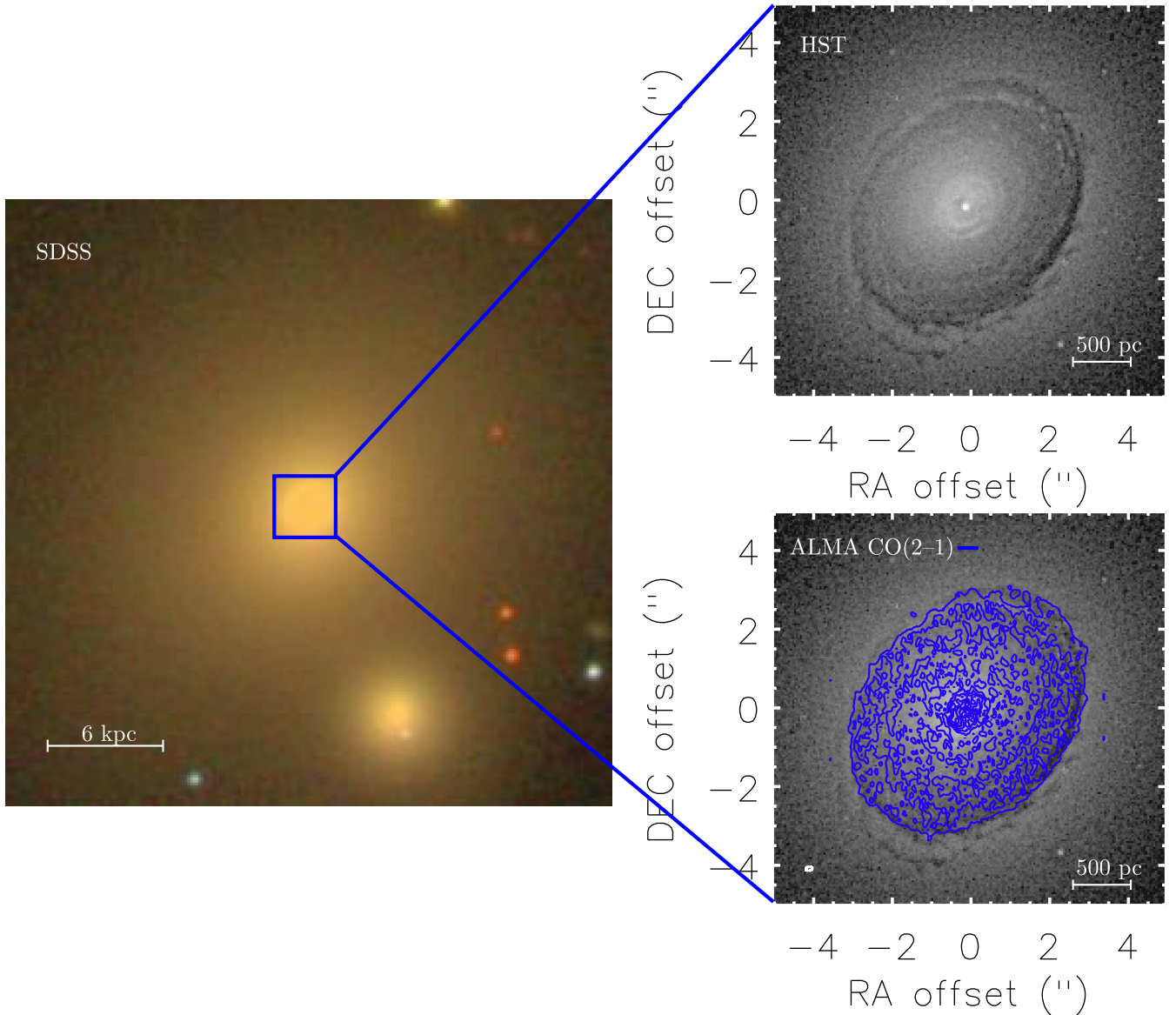


Figure 1. *Left-hand panel:* SDSS three-colour (*gri*) image of NGC 0383, 90 arcsec \times 90 arcsec (29 kpc \times 29 kpc) in size. *Right-hand panel, top:* Unsharp-masked *Hubble Space Telescope* (*HST*) Wide-Field Planetary Camera 2 (WFPC2) F555W image of a 3.2 kpc \times 3.2 kpc region around the nucleus (indicated in blue in the left-hand panel), revealing a clear central dust disc. *Right-hand panel, bottom:* As above, but overlaid with blue $^{12}\text{CO}(2-1)$ integrated intensity contours from our ALMA observations. The synthesized beam (0.18 arcsec \times 0.1 arcsec or 58 \times 32 pc 2) is shown as a (very small) white ellipse in the bottom-left corner. The molecular gas disc coincides with the dust disc.

sub-mm spectral energy distribution (SED), shown in Fig. 6. Our data point, shown by the cyan diamond, agrees well with previous observations. The literature data generally encompass emission from both the nucleus and the jet, but it is likely that it is the nucleus that causes the observed variability (i.e. the few data points well below the red best-fitting line in Fig. 6). Nevertheless, the data are fitted well with a simple power law for the flux F as a function of frequency ν ($F_\nu \propto \nu^\alpha$), with a power-law index $\alpha = -0.66 \pm 0.03$ (the red line shown in Fig. 6). This index value (≈ -0.7) is typical of a radio galaxy dominated by synchrotron radiation, as expected here from the prominent AGN jets (e.g. MacDonald et al. 1968; Bridle & Perley 1984; Laing & Bridle 2002).

Despite the prominence of the AGN jets, the extreme regularity of the molecular gas distribution and kinematics (Fig. 2) indicates that the radio AGN activity does not directly disturb the gas disc.

Our ability to model the disc motions and estimate the SMBH mass is thus unaffected.

3 DYNAMICAL MODELLING

The method we use to estimate the SMBH mass is described in detail in Davis et al. (2017) and was used in the previous WISDOM papers, but we summarize the specifics for modelling NGC 0383 in this section. We make use of the publicly available KINEMATIC MOLECULAR SIMULATION (KinMS)³ mm-wave observation simulation tool of Davis et al. (2013a) to create models of the data cube. KinMS uses input information about the gas distribution and kinematics,

³<https://github.com/TimothyADavis/KinMS>

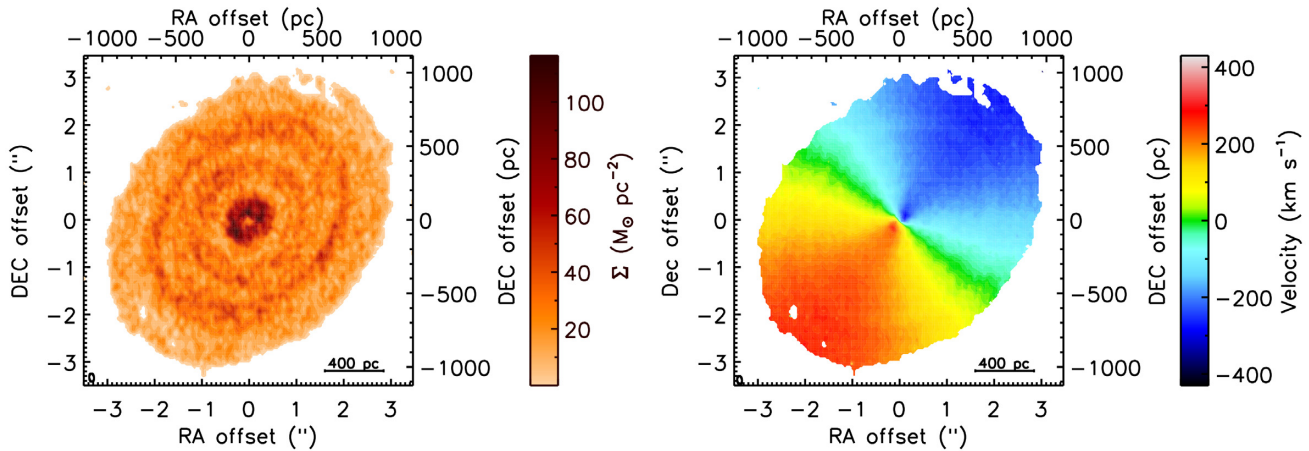


Figure 2. Moment zero (integrated intensity; left-hand panel) map of NGC 0383 assuming conversion factor CO-to-H₂ $\alpha_{\text{CO}} = 4.8 M_{\odot} (\text{K km s}^{-1})^{-1} \text{pc}^{-2}$. Moment one (intensity-weighted mean velocity; right-hand panel) of NGC 0383. The ellipse at the bottom-left of each panel shows the synthesized beam (0.18 arcsec \times 0.1 arcsec).

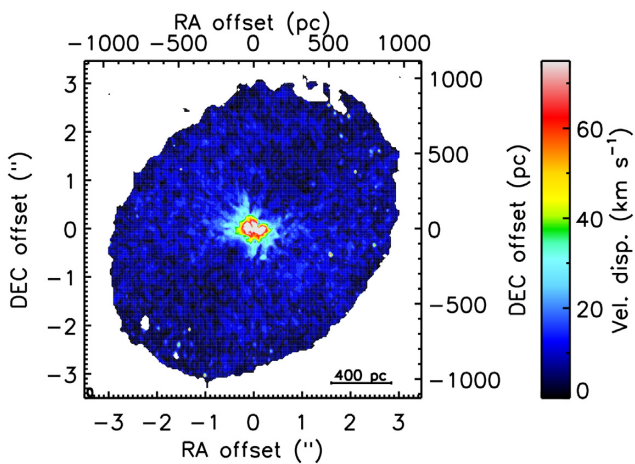


Figure 3. Moment two (intensity-weighted velocity dispersion) map of NGC 0383. The ellipse at the bottom-left shows the synthesized beam (0.18 arcsec \times 0.1 arcsec).

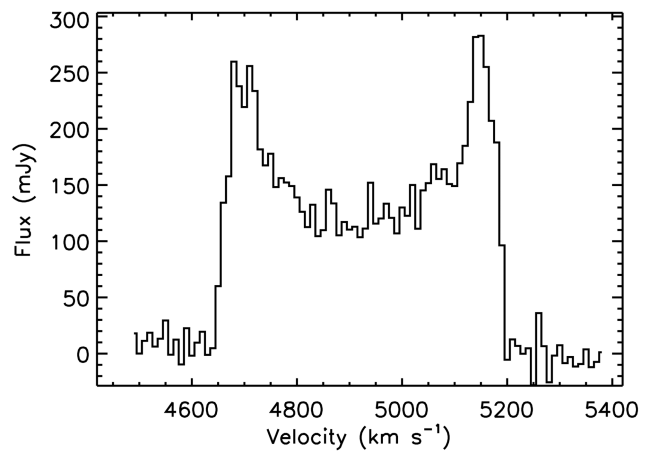


Figure 5. ¹²CO(2–1) integrated spectrum of NGC 0383, showing the clear double-horned shape of a rotating disc.

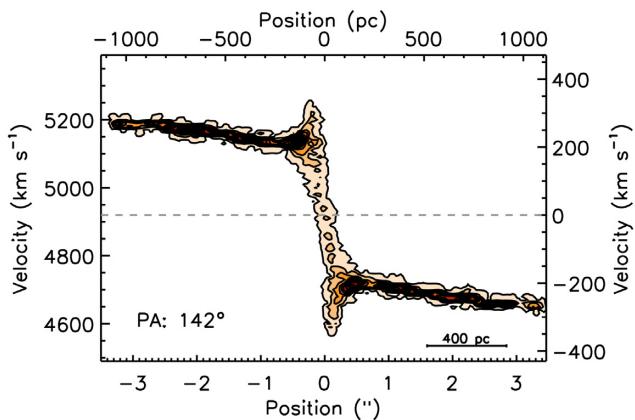


Figure 4. Major-axis PVD of NGC 0383. The SMBH signature is clearly visible and dominant at radii less than 0.5 arcsec. The rotation of the outer disc ($\gtrsim 0.5$ arcsec) is very regular and relaxed. The dashed line shows the systemic velocity $V = 4925 \pm 4 \text{ km s}^{-1}$.

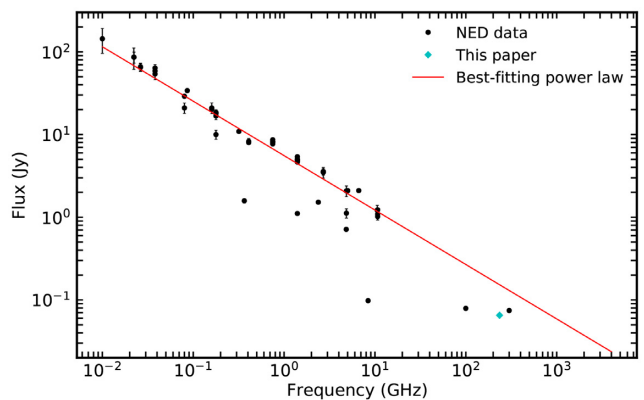


Figure 6. Spectral energy distribution of NGC 0383 from radio to mm wavelengths, constructed using data from NED (black circles) and our data (cyan diamond). A best-fitting power law with slope -0.66 is overlaid in red. Error bars are plotted for all points but most are smaller than the symbol used.

including a circular velocity curve. Applying observational effects such as beam smearing and velocity binning, KinMS then creates a simulated data cube that can be directly compared to the observed data cube. The model parameters are incrementally driven towards the best-fitting values by a Markov chain Monte Carlo (MCMC) method. The MCMC algorithm fully samples the χ^2 hyper-volume to estimate the posterior distributions and hence uncertainties on the best-fitting values.

3.1 Mass model

We use an axisymmetric model of the stellar light distribution to derive the circular velocity curve of the galaxy. We assume that the stellar mass dominates the potential in the inner parts of the galaxy: the molecular gas mass density is negligible in this system (see Section 4.2), whilst dark matter is usually unimportant at small radii, as shown by e.g. Cappellari et al. (2013). Even if this latter assumption is incorrect, if the dark matter were distributed identically to the stellar mass in the inner parts of the galaxy, it would simply lead to a higher mass-to-light ratio and would not affect the best-fitting SMBH mass. If dark matter were to contribute significantly and be distributed differently to the stellar mass, we would then find evidence for a significant mass-to-light ratio gradient (we find marginal evidence for a small mass-to-light ratio gradient in Section 3.2).

To model the luminous mass we perform a Multi-Gaussian Expansion (MGE; Emsellem, Monnet & Bacon 1994), using the method implemented in the MGE_FIT_SECTORS Interactive Data Language (IDL) software⁴ version v4.12 of Cappellari (2002). We use a combined *Hubble Space Telescope* (*HST*) Near Infrared Camera and Multi-Object Spectrometer (NICMOS) F160W and Two-Micron All-Sky Survey (2MASS) *H*-band image. This combined image allows us to model the stellar light with a sum of two-dimensional (2D) Gaussians up to a radius of 20 arcsec (6.4 kpc), the *HST* image being used exclusively for the inner ≈ 4 arcsec (1.3 kpc) in radius because of its superior angular resolution. To minimize the effect of dust attenuation on the mass-to-light ratio, the *HST* image was masked over part of its lower-right limb (see the cyan region in Fig. 7, top panel). The resulting MGE model is shown in Fig. 7, with the values of each Gaussian listed in Table 1 (these values have not been deconvolved).

The circular velocity curve is then calculated by the MGE_CIRCULAR_VELOCITY procedure,⁴ by first analytically deprojecting the 2D Gaussians to a three-dimensional (3D) mass distribution, calculating the potential, and hence the circular velocity. The procedure uses a mass-to-light ratio of $1 M_{\odot}/L_{\odot, F160W}$. The circular velocity is then multiplied element-wise by the square root of the mass-to-light ratio adopted, and a point mass representing the SMBH is added in the centre. The functional form of the mass-to-light ratio is fully explained in Section 3.2. However, we will show in Section 4 that, in the case of NGC 0383, the SMBH mass is essentially independent of the stellar mass-to-light ratio.

3.2 Bayesian analysis

We use an MCMC method to find the posterior distribution of the model best fitting the NGC 0383 data, making use of the IDL

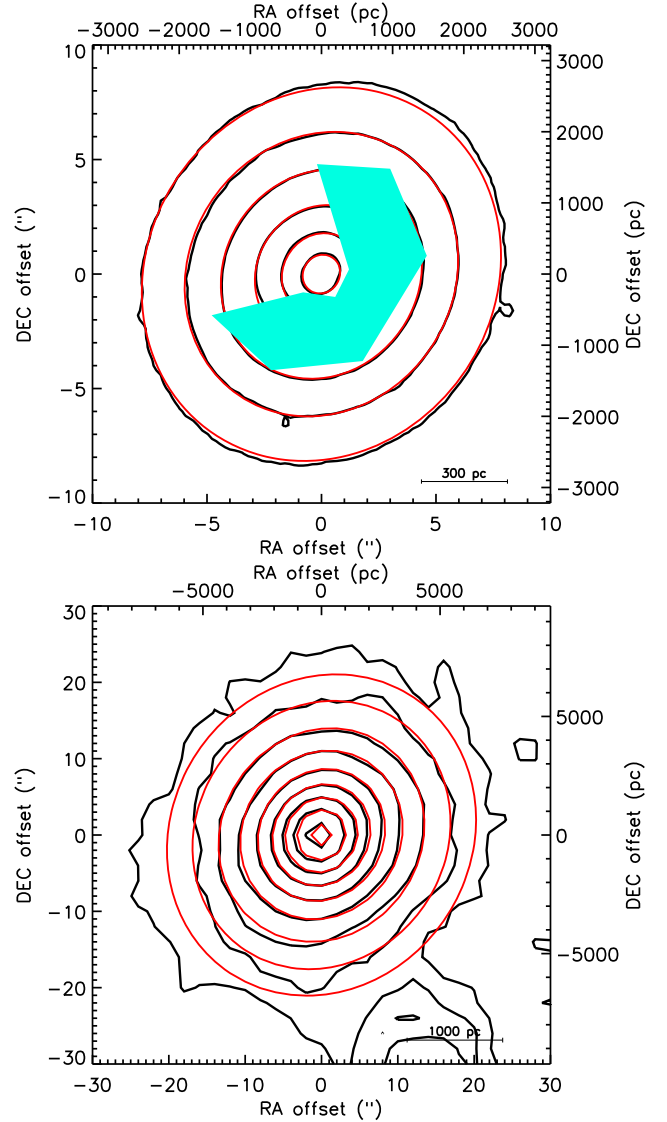


Figure 7. MGE model of NGC 0383 (red contours) overlaid on the *HST* NICMOS F160W image (black contours, top panel) and the 2MASS *H*-band image (black contours, bottom panel). In the *HST* image (top panel), the area masked due to dust is shown in cyan. A foreground star, bottom-right in the 2MASS image (bottom panel), is outside the fit radius and does not affect the MGE.

Table 1. MGE best-fitting Gaussians (not deconvolved).

I ($L_{\odot, F160W} \text{ pc}^{-2}$)	σ_j (arcsec)	q_j
12913.05	0.0682	0.91
3996.80	0.823	0.9
5560.84	1.13	0.93
4962.29	2.63	0.9
2877.92	4.98	0.9
957.88	12.7	0.9

Note. For each Gaussian component, column 1 lists its F160W central surface brightness, column 2 lists its standard deviation (width), and column 3 lists its axial ratio.

⁴<http://purl.org/cappellari/software>, part of the Jeans Anisotropic MGE (JAM) dynamical modelling package of Cappellari (2008).

Table 2. Best-fitting parameters with uncertainties from the MCMC fits.

Parameter	Search range	Best fit	1 σ uncertainty	3 σ uncertainty
SMBH mass ($\log(M_{\odot})$)	8.70–9.95	9.63	0.04	0.08
Stellar M/L inner ($M_{\odot}/L_{\odot, F160W}$)	0.01–10	2.78	0.21	0.61
Stellar M/L outer ($M_{\odot}/L_{\odot, F160W}$)	0.01–10	2.36	0.12	0.33
Position angle ($^{\circ}$)	112–172	142.20	0.04	0.10
Inclination ($^{\circ}$)	26–89	37.58	1.67	3.48
Velocity dispersion (km s^{-1})	0–15	8.32	0.72	2.11
Nuisance parameters				
Integrated intensity (Jy km s^{-1})	5–200	74.60	4.15	9.79
Centre X offset (arcsec)	–5–5	–0.00	0.01	0.03
Centre Y offset (arcsec)	–5–5	–0.05	0.02	0.04
Centre velocity offset (km s^{-1})	–50–10	–15.16	1.37	3.63

Note. The X and Y offsets are measured with respect to the location of the unresolved continuum point source, RA = $01^{\text{h}}07^{\text{m}}24^{\text{s}}.96$ and Dec. = $+32^{\circ}24'45''.11$. The velocity offset is measured with respect to the central channel of the cube ($V_{\text{helio, radio}} = 4940 \text{ km s}^{-1}$). The best-fitting centre velocity offset thus defines a systemic velocity of $V = 4925 \pm 4 \text{ km s}^{-1}$.

KINMS_MCMC⁵ code of Davis et al. (2013b, 2017) that easily interfaces with the KinMS simulation tool to create new models and calculate and maximize the likelihood. A single fit was made to the whole clean data cube, with one hundred thousand iterations. All parameters had flat priors in linear space within specified physical limits, as listed in Table 2, the only exception being the SMBH mass prior that was flat in log-space. The observational errors were taken to be the rms of the data cube in line-free channels, assumed to be constant throughout the cube.

The molecular gas disc of NGC 0383 has a slight nuclear ring and outer spiral/ring structures that make assuming a smoothly varying monotonic radial profile inappropriate. Rather than constructing an arbitrarily complicated parametrization of the radial gas distribution, we adopt instead the observed gas distribution as an input to our KINMS model. Using the SKYSAMPLER⁶ tool (Smith et al. 2019), we thus sample the de-convolved CLEAN components produced by the CASA task to generate a set of gas particles that exactly replicate the surface brightness profile. These particles are then used as an input into KINMS, with the three-dimensional central position, inclination, and position angle of the gas disc as free parameters. The centre is initially assumed to be at the centre of the continuum emission (RA = $01^{\text{h}}07^{\text{m}}24^{\text{s}}.95$, Dec. = $+32^{\circ}24'45''.15$) and the velocity of the central channel of the cube ($V_{\text{helio, radio}} = 4940 \text{ km s}^{-1}$). With no evidence to the contrary, we use the thin disc approximation for NGC 0383.

We found that allowing a linearly varying radial mass-to-light ratio profile fits the data better than a single (constant) mass-to-light ratio. Initial fits used a single mass-to-light ratio for the whole disc, but this did not provide a good fit to the entire data cube. We therefore implemented the simplest model to account for this, a linearly varying mass-to-light ratio, defined as

$$M/L(R) = (M/L_{\text{outer}} - M/L_{\text{inner}}) \left(\frac{R}{3.5 \text{ arcsec}} \right) + M/L_{\text{inner}}, \quad (2)$$

where R is the radius and the inner (M/L_{inner}) and outer (M/L_{outer}) mass-to-light ratios are free parameters of our fit. The inner value is set at the centre of the disc ($R = 0 \text{ arcsec}$) with the outer edge at $R = 3.5 \text{ arcsec}$ and a flat mass-to-light ratio beyond that.

Here, we adopt the usual definition of 1 σ (3 σ) uncertainties as the 68.3 per cent (99.7 per cent) confidence intervals of the Bayesian posteriors found from the MCMC. Table 2 lists the best-fitting value of each model parameter, along with its formal uncertainties.

As discussed in section 3.2 of van den Bosch & van de Ven (2009), when working with very large data sets the statistical uncertainties can be severely underestimated due to the dominance of the systematic uncertainties. Accordingly, they suggest an approximate correction to account for the systematic uncertainties, by rescaling the $\Delta \chi^2$ (with respect to the minimum χ^2 , χ_{min}^2) required to define a given confidence level by the standard deviation of the χ^2 , namely $\sqrt{2(N - P)} \approx \sqrt{2N}$, where N is the number of constraints ($\approx 5.9 \times 10^6$) and P is the number of inferred model parameters (10). This sets the 68.3 per cent (99.7 per cent) confidence level at $\chi_{\text{min}}^2 + \sqrt{2N} (\chi_{\text{min}}^2 + 3\sqrt{2N})$. Applying this rescaling results in significantly larger uncertainties on the fitted parameters, which are likely to be more physically plausible. The same method was applied and discussed in detail by Smith et al. (2019), and we use it here in the MCMC fitting of NGC 0383. The corner plots and one-dimensional marginalization of each model parameter are shown in Fig. 8.

Correlations are induced between pixels due to the synthesized beam that can be corrected for by accounting for the induced covariance. However, the effect of this covariance on the MCMC uncertainties is negligible compared to the rescaling of the χ^2 discussed above; hence, we did not include the covariance matrix in our calculations.

We find strong evidence for an SMBH of mass $(4.2 \pm 0.7) \times 10^9 M_{\odot}$ (3 σ uncertainty). The best-fitting model's PVD is shown in the middle panel of Fig. 9, as the blue contours overlaid on the data. It has a reduced χ^2 of 1.01. Fig. 9 shows that a kinematic model with a dark massive object at the centre is the only model to fully describe the data. In the left-hand panel, the SMBH has been removed and the model no longer reproduces the data. The right-hand panel of Fig. 9 shows the best-fitting model with the mass-to-light ratio set to zero, i.e. no stellar mass, demonstrating that the SMBH mass dominates in the inner 0.5 arcsec (as the fit is still very good in that region).

The best-fitting F160W-band mass-to-light ratio decreases linearly from $2.8 \pm 0.6 M_{\odot}/L_{\odot, F160W}$ in the centre to $2.4 \pm 0.3 M_{\odot}/L_{\odot, F160W}$ at the outer edge of the disc (both 3 σ

⁵https://github.com/TimothyADavis/KinMS_MCMC

⁶<https://github.com/Mark-D-Smith/KinMS-skySampler>

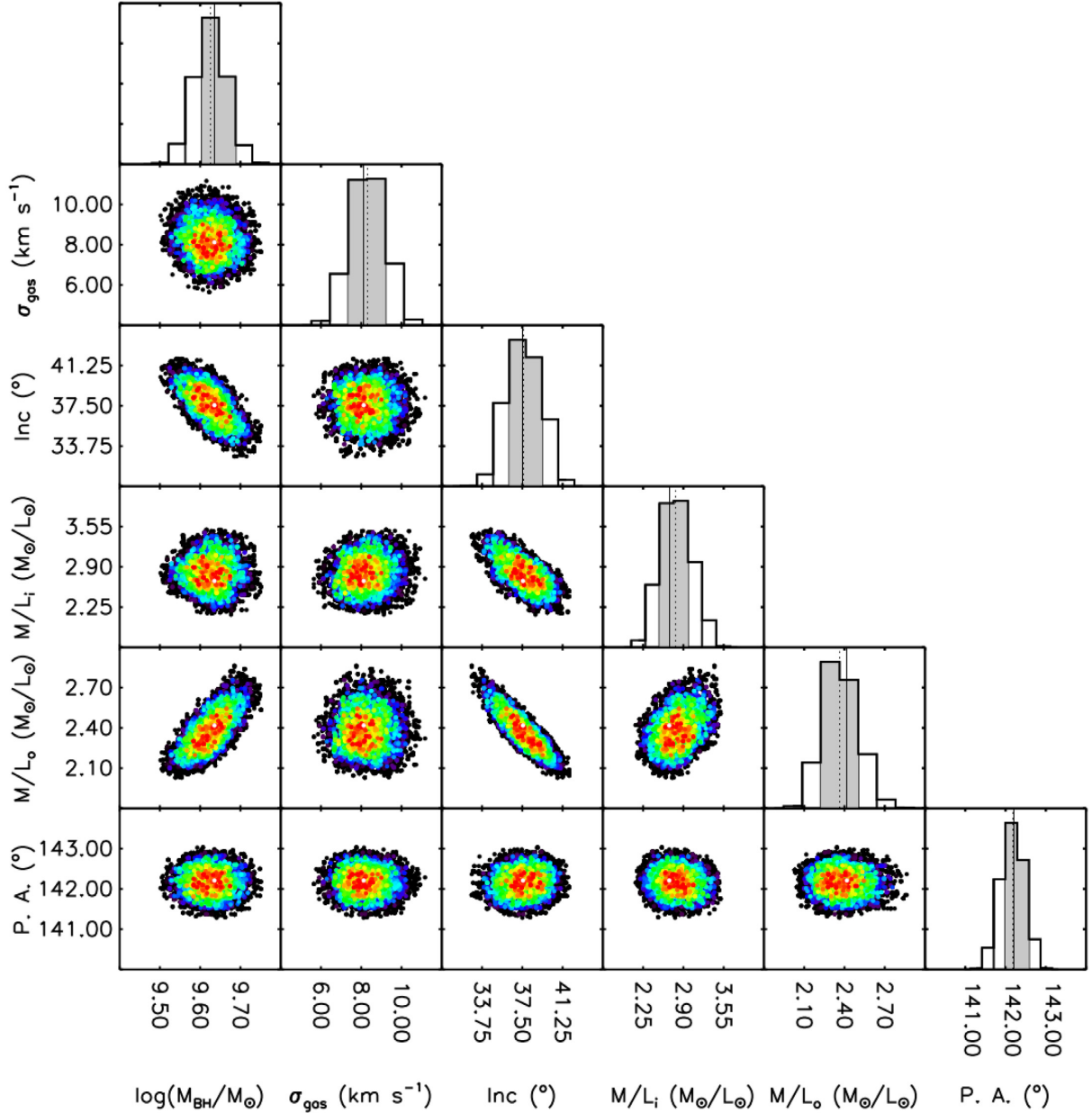


Figure 8. Corner plots showing covariances between the model parameters, for the non- nuisance parameters. The colours represent increasing confidence intervals from 68.3 per cent (red, 1σ) to 99.7 per cent (blue, 3σ). The white dots show the χ^2_{\min} values. Covariances are present between the SMBH mass and outer stellar mass-to-light ratio, SMBH mass and inclination, and inclination and both stellar mass-to-light ratios. In the SMBH mass cases, this is exaggerated by plotting linear against logarithmic scales. Histograms show the one-dimensional marginalized posterior distribution of each model parameter. The shaded regions indicate the 68 per cent (1σ) confidence intervals. The black dashed lines show the median values and the black solid lines the χ^2_{\min} values.

uncertainties). The spatial centre (as indicated by the X and Y offsets) is consistent with the unresolved continuum source to within the beam size.

4 DISCUSSION

In this work, we have presented ALMA $^{12}\text{CO}(2-1)$ observations of NGC 0383 showing a relaxed gas disc (Section 2). The data clearly show the kinematic signature of a massive dark object, with a mass of $(4.2 \pm 0.7) \times 10^9 M_{\odot}$ (3σ uncertainty) measured through dynamical modelling (Section 3).

4.1 Uncertainties

The uncertainties associated with an SMBH mass derived through the molecular gas technique are discussed extensively in the previous papers using this method. Each paper builds from the last and focuses on the sources of uncertainty that are relevant to each galaxy. In particular, Smith et al. (2019) discussed properly constraining the mass-to-light ratio and inclination. As we resolve the SMBH R_{SOI} in NGC 0383 in this case our mass measurement is essentially independent of the mass-to-light ratio (see Section 4.2). Accurately determining the inclination, however, remains important. Our choice to apply the χ^2 scaling (discussed in Section 3.2) allows us to retrieve more physically meaningful estimates of our inclination

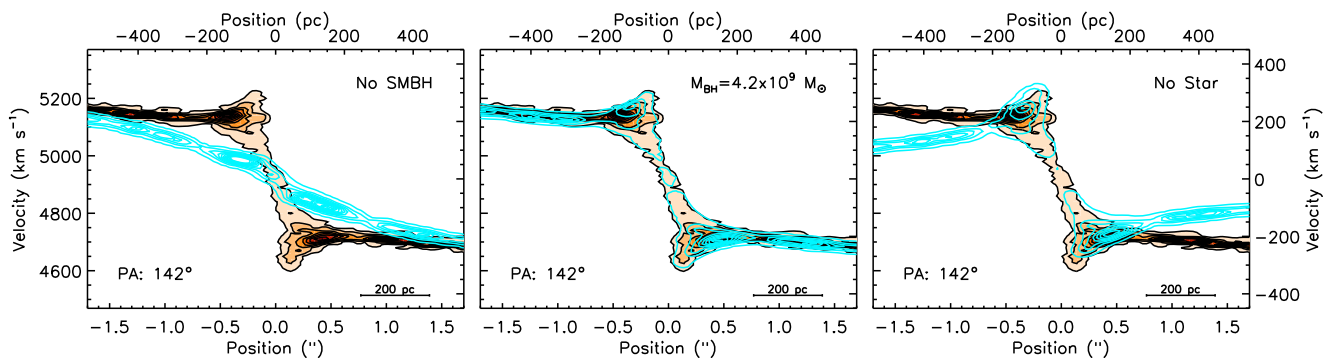


Figure 9. Observed PVD of NGC 0383 with the smooth mask applied (orange contours) with the best-fitting model’s PVD overplotted (blue contours; middle panel). The left-hand panel shows the same model, but with no SMBH. The right-hand panel also shows the same model, but with both mass-to-light ratios set to zero (no stellar contribution).

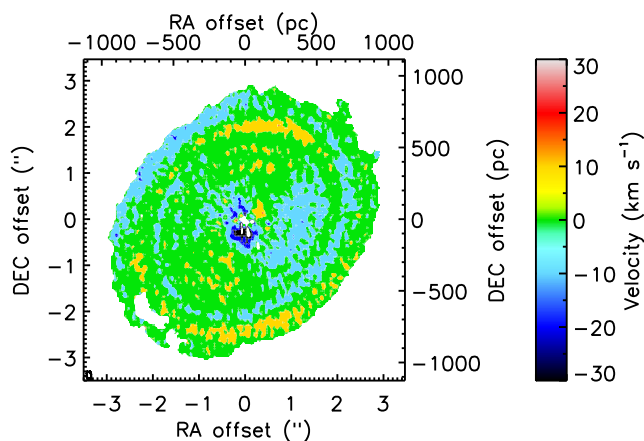


Figure 10. First moment (intensity-weighted mean velocity) residuals of NGC 0383, created by subtracting the first moment of the best-fitting model cube from the first moment of the data cube. The plot clearly shows the slight spiral features that could not be modelled by our axisymmetric mass model. Due to the simplicity of the model and weighting when creating the first moment, there are larger velocity residuals near the disc centre.

uncertainties. As NGC 0383 is fairly face-on ($i \approx 38^\circ$), these uncertainties dominate the error budget, through the degeneracy between inclination and SMBH mass (see Fig. 8).

Other potential sources of uncertainty arise from the assumption that the molecular gas is dynamically cold and rotating on circular orbits. The velocity dispersion of the gas is consistently small ($\sigma_{\text{gas}} < 10 \text{ km s}^{-1}$), indicating the disc is nearly perfectly rotationally supported ($V_{\text{rot}}/\sigma_{\text{gas}} \gtrsim 40$, where V_{rot} is the deprojected rotation velocity of the gas in the nearly flat portion of the rotation curve; see e.g. Fig. 4). Despite this, some non-circular motions do appear to be present. The velocity residuals (Fig. 10; data moment 1 minus best-fitting model moment 1) show the same spiral/ring structures noted in the moment zero (Fig. 2), indicating that material may be flowing along these arms (potential fuelling the AGN). The larger velocity residuals near the centre are due to the intensity weighting when creating the moment 1 map. However, the dominance of the SMBH in the central regions (see Fig. 11) indicates that non-circular motions are unlikely to significantly affect the derived SMBH mass.

All these uncertainties are small, and in any case they are dwarfed by that on the distance measurement. This uncertainty is ≈ 15 per cent (i.e. $66.6 \pm 9.9 \text{ Mpc}$), from the use of the Tully–Fisher

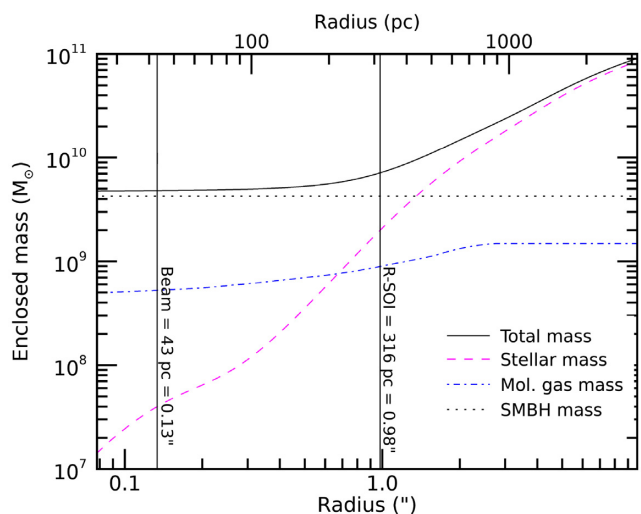


Figure 11. Cumulative mass profile of NGC 0383, showing the total mass (black solid line), SMBH mass (black dotted line), stellar mass (magenta dashed line), and molecular gas disc mass (blue dot-dashed line) enclosed as a function of radius. The vertical lines indicate the synthesized beam and measured R_{SOI} . At a radius of one synthesized beam, both the stellar mass and the molecular gas mass are insignificant (≈ 1 per cent and ≈ 10 per cent of the total mass, respectively).

relation in Freedman et al. (2001) to estimate the distance. The SMBH mass measurement scales linearly with the distance adopted, and as is customary we do not include the distance uncertainty in our result.

4.2 Mass-to-light ratio influence

The posterior distribution between SMBH mass and mass-to-light ratio shows a strong covariance (see Fig. 8, middle panels of the leftmost column), although this is exaggerated by plotting linear against logarithmic scales. The correlation present is contrary to the expected anticorrelation, and it may be a product of the SMBH mass–inclination and mass-to-light ratio–inclination correlations. By allowing the inclination to vary during the fit, the correlation between mass-to-light ratio and inclination dominates and induces correlations in other variables. See Smith et al. (2019) for a fuller discussion of this issue.

A simple calculation of the total mass enclosed from the circular velocity (and assuming spherical symmetry, i.e. $M_{<R} \propto V_{\text{rot}}^2(R)/R$)

allows us to determine how significant the stellar mass is as a function of radius in NGC 0383. Fig. 11 shows the enclosed stellar mass as a function of radius as well as the enclosed total mass, revealing that the stellar mass becomes significant only at a radius of ≈ 300 pc. At 0.13 arcsec (i.e. one synthesized beam, 43 pc), the stellar mass is only ≈ 1 per cent of the mass enclosed at that radius, so is insignificant. The molecular gas disc mass at this radius is ≈ 10 per cent of the total enclosed mass, that is again small compared to the SMBH mass (≈ 90 per cent of the total enclosed mass). This indicates that whilst the mass-to-light ratio (and assumed X_{CO}) do have a covariance with the SMBH, their effect on the best-fitting value is very small and the SMBH mass is largely independent of them. The fact that our SMBH mass is almost independent of our luminous mass model in turn leads to the very small uncertainties on M_{BH} compared to other works (indeed, the 3σ confidence interval in Fig. 8 is very narrow). It also gives us greater confidence in our measurement.

Although in NGC 0383 the SMBH dominates the total mass distribution within a few synthesized beams (i.e. angular resolution elements), this might not always be the case and in some instances the mass of the molecular gas disc itself may matter. In fact, even in NGC 0383, the stellar and molecular gas masses are approximately equal at R_{SOI} . This reinforces the importance of spatially resolved molecular gas data for SMBH mass measurements.

4.3 Estimating M_{BH} from the observed R_{SOI}

In contrast to the detailed dynamical modelling of Section 3.2, we can make a crude estimate of the SMBH mass from the observed radius of the SMBH sphere of influence (R_{SOI}). The SMBH R_{SOI} is defined as the radius within which the SMBH dominates the potential (see equation 1). This radius can be determined from the observed PVD (Fig. 4) as the local minimum in the rotation curve (i.e. the transition point) between the SMBH-dominated Keplerian curve ($V_{\text{rot}} \propto 1/\sqrt{R}$) and the stellar mass-dominated approximately flat rotation curve ($V_{\text{rot}} \simeq \text{constant}$). By visual inspection, we estimate this occurs at a radius of ≈ 0.7 arcsec (see Fig. 9). Using equation (1) and $\sigma_* = 239 \pm 16 \text{ km s}^{-1}$ (van den Bosch 2016) then yields $M_{\text{BH}} \approx 3.0 \times 10^9 M_{\odot}$. Given that the SMBH R_{SOI} is so well resolved, this back-of-the-envelope estimate agrees well with our full modelling value of $(4.2 \pm 0.7) \times 10^9 M_{\odot}$ (the latter also yielding an exact $R_{\text{SOI}} = 316 \pm 60$ pc or 0.98 arcsec ± 0.18 arcsec).

4.4 Comparison to the literature

An upper limit on the SMBH mass in NGC 0383 has previously been determined by Beifiori et al. (2009). Once scaled to our distance (66.6 Mpc from 63.4 Mpc) and inclination (37.6° from 33°) this is $M_{\text{BH}} = 1.1 \times 10^9 M_{\odot}$. Given that this is lower than our measurement, it might indicate the presence of very disturbed ionized gas.

One of the tightest known correlations between SMBH mass and a host galaxy property is that with the stellar velocity dispersion, i.e. the $M_{\text{BH}}-\sigma_*$ relation (e.g. Gebhardt et al. 2000; Ferrarese & Merritt 2000). We added our measurement to the dynamical measurements and power-law fit of van den Bosch (2016) in Fig. 12, to see whether our measurement also lies on this relation. The data of van den Bosch (2016) are shown in grey, whilst our new measurement for NGC 0383 is shown in blue. Other SMBH masses estimated using the molecular gas method are shown in red (Davis et al. 2013b; Onishi et al. 2015; Barth et al. 2016a,b; Davis et al. 2017, 2018;

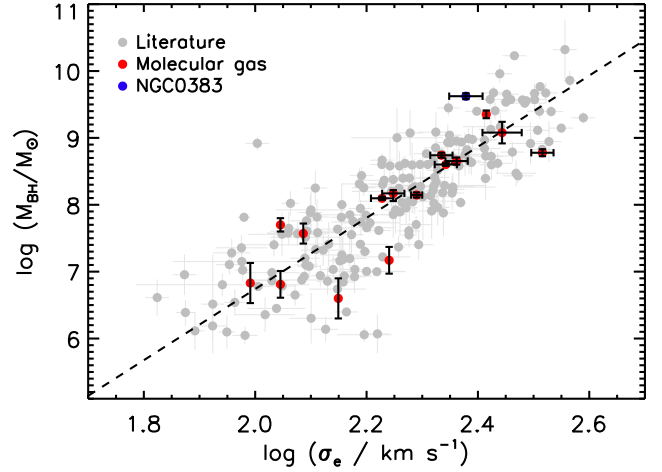


Figure 12. The $M_{\text{BH}}-\sigma_e$ relation from literature measurements (grey points and dotted line), as compiled by van den Bosch (2016). SMBH mass measurements using the molecular gas method are highlighted in red, whilst this work (NGC 0383) is in blue. For the molecular gas-derived SMBH masses, the error bars shown correspond to 1σ uncertainties.

Onishi et al. 2017; Boizelle et al. 2019; Combes et al. 2019; Nagai et al. 2019; Smith et al. 2019). NGC 0383 has the largest SMBH mass estimated with molecular gas so far, and is on the upper edge of the scatter in the van den Bosch (2016) $M_{\text{BH}}-\sigma_*$ relation. If accurate, the low σ_e compared to the SMBH mass indicates NGC 0383 might be part of the so-called overmassive black hole population. These galaxies are thought to be local analogues of the higher-redshift quiescent galaxies that also contain overmassive black holes, and could therefore be relics that have evolved little since a redshift $z \approx 2$ (van den Bosch 2016; Walsh et al. 2016). Alternatively, an overmassive SMBH may be the result of merger(s), especially when paired with a high molecular gas mass in an ETG harbouring an AGN. Lim et al. (2000) discuss whether the AGN activity in NGC 0383 is the result of a gas-rich minor merger, with black hole accretion beginning soon after the merger event. Whilst this is plausible, it is unclear if this scenario could explain such an overly massive SMBH.

4.5 Comparison of spatial scales probed by molecular gas and megamasers

Modelling megamaser dynamics is typically the most accurate method of measuring SMBH masses, due to the exquisite angular and spectral resolution usually achieved. The Keplerian rise we detect in the centre of NGC 0383 indicates that our data reach very close to the SMBH. The connection between the accretion disc/torus region (where masers are typically found) and the outer molecular gas disc has only recently begun to be explored in any detail. It is thought that position angle mismatches are common between these two components, and tilted and counter-rotating accretion discs are frequently observed (e.g. recently by Imanishi et al. 2018; Combes et al. 2019). In contrast to this expectation, NGC 0383 seems to have a single, unwarped molecular disc extending from kiloparsec scale to well within its SMBH SOI.

We are able to estimate just how close to the SMBH the highest velocity molecular gas we detect here is. Equating the centrifugal and gravitational forces at a radius R and assuming the SMBH mass

dominates the stellar mass within this radius, we obtain

$$R = \frac{GM_{\text{BH}}}{V_c^2}, \quad (3)$$

where V_c is the circular velocity at R . If we normalize the radius by the Schwarzschild radius

$$R_{\text{Schw}} \equiv \frac{2GM_{\text{BH}}}{c^2}, \quad (4)$$

where c is the speed of light, and the circular velocity by c , we find

$$\frac{R}{R_{\text{Schw}}} = \frac{1}{2} \left(\frac{V_c}{c} \right)^{-2}, \quad (5)$$

where interestingly the SMBH mass has dropped out. All rotationally supported discs around an SMBH should thus follow this unique relation, irrespective of the SMBH mass. Substituting $V_c = V_{\text{obs}}/\sin(i)$, where V_{obs} is the observed line-of-sight velocity (along the galaxy major axis) and i the inclination, we obtain

$$\frac{R}{R_{\text{Schw}}} = 0.5 \times 10^6 \left(\frac{300 \text{ km s}^{-1} \sin(i)}{V_{\text{obs}}} \right)^2. \quad (6)$$

The maximum rotation velocity observed in NGC 0383 is $V_{\text{obs}} \approx 350 \text{ km s}^{-1}$ (the peak of the PVD in Fig. 4) and $i = 37.5^\circ$. The highest velocity molecular gas we detect therefore reaches $\approx 1.36 \times 10^5$ Schwarzschild radii.

Megamasers, although rare, are the current gold standard for dynamical SMBH mass measurements. Megamasers are thought to trace gas very close to the SMBH (in the accretion disc/torus), and as such they probe the gravitational field of the SMBH in a way that is unaffected by most outside sources. In addition, in the best cases, maser observations provide independent geometric distance estimates, vastly reducing the dominant systematic effect that plagues most SMBH mass measurements. Some of the earliest megamasers discovered were in NGC 4258 (Nakai, Inoue & Miyoshi 1993; Herrnstein et al. 1999), more recently. The Megamaser Cosmology Project (MCP) have carried out the most complete survey of megamasers to date, with the goal of measuring Hubble’s constant (see e.g. the survey compilation by Braatz et al. 2015). The MCP observations also allow them to make several SMBH mass measurements (e.g. Reid et al. 2009; Zhao et al. 2018). The observed megamasers with SMBH masses have V_{obs} ranging from 170 km s^{-1} (NGC 1029; Gao et al. 2017) to 950 km s^{-1} (NGC 2273; Kuo et al. 2011), with an average of $\approx 600 \text{ km s}^{-1}$. All megamaser systems are observed close to edge-on, so that $\sin(i) \approx 1$. Given this, megamasers typically probe gas at radii between 5×10^4 and 1.5×10^6 Schwarzschild radii. Our data thus show that the molecular gas disc in NGC 0383 extends unbroken and unwarped down to very close to the SMBH, and that it traces the same material probed by megamasers in other galaxies.

5 CONCLUSIONS

We have presented a measurement of the mass of the SMBH in the nearby lenticular galaxy NGC 0383 (radio source 3C 031). This estimate is based on ALMA observations of the $^{12}\text{CO}(2-1)$ emission line with a physical resolution of $\approx 43 \text{ pc}$ ($0.18 \text{ arcsec} \times 0.1 \text{ arcsec}$). We thus have a spatial resolution a factor of >7 better than the R_{SOI} . Our spectroscopic resolution, and a channel width of 10 km s^{-1} , allow us to resolve gas down to $\approx 140\,000$ Schwarzschild radii and thus to probe the same material as typical megamaser observations. NGC 0383 has a relaxed, smooth nuclear disc with weak ring/spiral features. We detect a clear Keplerian increase of

the rotation velocity of $^{12}\text{CO}(2-1)$ at radii $\lesssim 0.5 \text{ arcsec}$, and forward model of our ALMA data cube with the KinMS tool in a Bayesian MCMC framework to measure an SMBH mass of $(4.2 \pm 0.7) \times 10^9 M_\odot$, a F160W-band mass-to-light ratio varying linearly from $2.8 \pm 0.6 M_\odot/L_{\odot, \text{F160W}}$ in the centre to $2.4 \pm 0.3 M_\odot/L_{\odot, \text{F160W}}$ at the outer edge of the molecular gas disc (3.5 arcsec radius) and a velocity dispersion of $8.3 \pm 2 \text{ km s}^{-1}$ (all 3σ uncertainties). We also detect continuum emission from the AGN in NGC 0383 across the full bandwidth, consistent with synchrotron radiation. This work not only shows the power of ALMA to estimate SMBH masses, but it also demonstrates that the molecular gas method is highly complimentary to megamaser observations as it can probe the same emitting material.

ACKNOWLEDGEMENTS

EVN, MDS, and TGW acknowledge support from a Science and Technology Facilities Council (STFC) PhD studentship.

TAD acknowledges support from a Science and Technology Facilities Council Ernest Rutherford Fellowship. MB was supported by the consolidated grants ‘Astrophysics at Oxford’ ST/H002456/1 and ST/K00106X/1 from the UK Research Council. MC acknowledges support from a Royal Society University Research Fellowship.

The authors thank the referee for their comments that have improved this paper.

This paper makes use of the following ALMA data: ADS/JAO.ALMA#2015.1.00419.S and ADS/JAO.ALMA#2016.1.00437.S. ALMA is a partnership of ESO (representing its member states), NSF (USA) and NINS (Japan), together with NRC (Canada), NSC and ASIAA (Taiwan) and KASI (Republic of Korea), in cooperation with the Republic of Chile. The Joint ALMA Observatory is operated by ESO, AUI/NRAO and NAOJ.

This paper also makes use of observations made with the NASA/ESA *HST*, and obtained from the Hubble Legacy Archive, which is a collaboration between the Space Telescope Science Institute (STScI/NASA), the Space Telescope European Coordinating Facility (ST-ECF/ESA) and the Canadian Astronomy Data Centre (CADNRC/CSA). Data were also used from the 2MASS at IPAC. The 2MASS project is a collaboration between The University of Massachusetts and the Infrared Processing and Analysis Center (JPL/Caltech). Funding is provided primarily by NASA and the NSF. The University of Massachusetts constructed and maintained the observatory facilities, and operated the survey. All data processing and data product generation is being carried out by IPAC. Survey operations began in Spring 1997 and concluded in Spring 2001. This research has made use of the NED which is operated by the Jet Propulsion Laboratory, California Institute of Technology, under contract with the National Aeronautics and Space Administration.

REFERENCES

- Alatalo K. et al., 2013, *MNRAS*, 432, 1796
- Barth A. J., Boizelle B. D., Darling J., Baker A. J., Buote D. A., Ho L. C., Walsh J. L., 2016a, *ApJ*, 822, L28
- Barth A. J., Darling J., Baker A. J., Boizelle B. D., Buote D. A., Ho L. C., Walsh J. L., 2016b, *ApJ*, 823, 51
- Beifiori A., Sarzi M., Corsini E. M., Bontà E. D., Pizzella A., Coccatto L., Bertola F., 2009, *ApJ*, 692, 856
- Beifiori A., Courteau S., Corsini E. M., Zhu Y., 2012, *MNRAS*, 419, 2497
- Bennett A. S., 1962, *MmRAS*, 68, 163

- Boizelle B. D., Barth A. J., Walsh J. L., Buote D. A., Baker A. J., Darling J., Ho L. C., 2019, *ApJ*, 881, 10
- Braatz J. et al., 2015, IAU General Assembly, 22, 2255730
- Bridle A. H., Perley R. A., 1984, *ARA&A*, 22, 319
- Bundy K. et al., 2008, *ApJ*, 681, 931
- Cappellari M., 2002, *MNRAS*, 333, 400
- Cappellari M., 2008, *MNRAS*, 390, 71
- Cappellari M., 2016, *ARA&A*, 54, 597
- Cappellari M., Verolme E. K., van der Marel R. P., Kleijn G. A. V., Illingworth G. D., Franx M., Carollo C. M., de Zeeuw P. T., 2002, *ApJ*, 578, 787
- Cappellari M. et al., 2013, *MNRAS*, 432, 1709
- Combes F. et al., 2019, *A&A*, 623, A79
- Courteau S. et al., 2014, *Rev. Mod. Phys.*, 86, 47
- Dame T. M., 2011, preprint (arXiv:1101.1499)
- Davis T. A., 2014, *MNRAS*, 443, 911
- Davis T. A. et al., 2013a, *MNRAS*, 429, 534
- Davis T. A., Bureau M., Cappellari M., Sarzi M., Blitz L., 2013b, *Nature*, 494,
- Davis T. A., Bureau M., Onishi K., Cappellari M., Iguchi S., Sarzi M., 2017, *MNRAS*, 468, 4675
- Davis T. A. et al., 2018, *MNRAS*, 473, 3818
- Djorgovski S., Davis M., 1987, *ApJ*, 313, 59
- Dressler A., Richstone D. O., 1988, *ApJ*, 324, 701
- Dressler A., Lynden-Bell D., Burstein D., Davies R. L., Faber S. M., Terlevich R., Wegner G., 1987, *ApJ*, 313, 42
- Edge D. O., Shakeshaft J. R., McAdam W. B., Baldwin J. E., Archer S., 1959, *Mem. R. Astron. Soc.*, 68, 37
- Emsellem E., Monnet G., Bacon R., 1994, *A&A*, 285, 723
- Ferrarese L., Merritt D., 2000, *ApJ*, 539, L9
- Ferrarese L., Ford H. C., Jaffe W., 1996, *ApJ*, 470, 444
- Freedman W. L. et al., 2001, *ApJ*, 553, 47
- Gao F. et al., 2017, *ApJ*, 834, 52
- Gebhardt K. et al., 2000, *ApJ*, 539, L13
- Graham A. W., 2007, *MNRAS*, 379, 711
- Greene J. E. et al., 2010, *ApJ*, 721, 26
- Haering N., Rix H.-W., 2004, *ApJ*, 604, L89
- Healey S. E., Romani R. W., Taylor G. B., Sadler E. M., Ricci R., Murphy T., Ulvestad J. S., Winn J. N., 2007, *ApJS*, 171, 61
- Herrnstein J. R. et al., 1999, *Nature*, 400, 539
- Högbom J. A., 1969, *Bulletin of the American Astronomical Society*, p. 348
- Hudson M. J., Lucey J. R., Smith R. J., Schlegel D. J., Davies R. L., 2001, *MNRAS*, 327, 265
- Imanishi M., Nakanishi K., Izumi T., Wada K., 2018, *ApJ*, 853, L25
- Jorgensen I., Franx M., Kjaergaard P., 1995, *MNRAS*, 276, 1341
- Kormendy J., Ho L. C., 2013, *ARA&A*, 51, 511
- Kormendy J., Richstone D., 1995, *ARA&A*, 33, 581
- Krajnović D., McDermid R. M., Cappellari M., Davies R. L., 2009, *MNRAS*, 399, 1839
- Krajnović D., Cappellari M., McDermid R. M., 2018, *MNRAS*, 473, 5237
- Kuo C. Y. et al., 2011, *ApJ*, 727, 20
- Laing R. A., Bridle A. H., 2002, *MNRAS*, 336, 1161
- Leroy A. K. et al., 2013, *AJ*, 146, 19
- Lim J., Leon S., Combes F., Dinh-V-Trung, 2000, *ApJ*, 545, L93
- Lo K. Y., 2005, *ARA&A*, 43, 625
- MacDonald G. H., Kenderdine S., Neville A. C., 1968, *MNRAS*, 138, 259
- Madau P., Dickinson M., 2014, *ARA&A*, 52, 415
- Magorrian J. et al., 1998, *AJ*, 115, 2285
- Marconi A., Hunt L. K., 2003, *ApJ*, 589, L21
- McConnell N. J., Ma C.-P., 2013, *ApJ*, 764, 184
- McMullin J. P., Waters B., Schiebel D., Young W., Golap K., 2007, Shaw R. A., Hill F., Bell D. J., eds, *ASP Conf. Ser. Vol. 376, Astronomical Data Analysis Software and Systems XVI*. Astron. Soc. Pac., San Francisco, p. 127
- Miyoshi M., Moran J., Herrnstein J., Greenhill L., Nakai N., Diamond P., Inoue M., 1995, *Nature*, 373, 127
- Mullaney J. R. et al., 2012, *ApJ*, 753, 30
- Nagai H. et al., 2019, preprint (arXiv:1905.06017)
- Nakai N., Inoue M., Miyoshi M., 1993, *Nature*, 361, 45
- Ocaña Flaquer B., Leon S., Combes F., Lim J., 2010, *A&A*, 518, A9
- Okuda T., Kohno K., Iguchi S., Nakanishi K., 2005, *ApJ*, 620, 673
- Onishi K., Iguchi S., Sheth K., Kohno K., 2015, *ApJ*, 806, 39
- Onishi K., Iguchi S., Davis T. A., Bureau M., Cappellari M., Sarzi M., Blitz L., 2017, *MNRAS*, 468, 4663
- Regan M. W., Thornley M. D., Helfer T. T., Sheth K., Wong T., Vogel S. N., Blitz L., Bock D. C. J., 2001, *ApJ*, 561, 218
- Reid M. J., Braatz J. A., Condon J. J., Greenhill L. J., Henkel C., Lo K. Y., 2009, *ApJ*, 695, 287
- Saintonge A. et al., 2017, *ApJS*, 233, 22
- Sarzi M., Rix H., Shields J. C., Rudnick G., Ho L. C., McIntosh D. H., Filippenko A. V., Sargent W. L. W., 2001, *ApJ*, 550, 65
- Scharwächter J., McGregor P. J., Dopita M. A., Beck T. L., 2013, *MNRAS*, 429, 2315
- Smith M. D. et al., 2019, *MNRAS*, 485, 4359
- Tully R. B., Fisher J. R., 1977, *A&A*, 54, 661
- van den Bosch R. C. E., 2016, *ApJ*, 831, 134
- van Velzen S., Falcke H., Schellart P., Nierstenhöfer N., Kampert K.-H., 2012, *A&A*, 544, A18
- van den Bosch R. C. E., van de Ven G., 2009, *MNRAS*, 398, 1117
- Walsh J. L., Barth A. J., Ho L. C., Sarzi M., 2013, *ApJ*, 770, 86
- Walsh J. L., van den Bosch R. C. E., Gebhardt K., Yıldırım A., Richstone D. O., Gültekin K., Husemann B., 2016, *ApJ*, 817, 2
- Zhao W. et al., 2018, *ApJ*, 854, 124

This paper has been typeset from a $\text{\TeX}/\text{\LaTeX}$ file prepared by the author.