



**CHALMERS**  
UNIVERSITY OF TECHNOLOGY

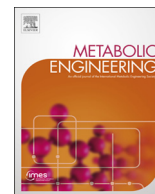
## **Pan-cancer analysis of the metabolic reaction network**

Downloaded from: <https://research.chalmers.se>, 2026-04-05 01:01 UTC

Citation for the original published paper (version of record):

Gatto, F., Ferreira, R., Nielsen, J. (2020). Pan-cancer analysis of the metabolic reaction network. *Metabolic Engineering*, 57: 51-62. <http://dx.doi.org/10.1016/j.ymben.2019.09.006>

N.B. When citing this work, cite the original published paper.



## Pan-cancer analysis of the metabolic reaction network

Francesco Gatto<sup>a</sup>, Raphael Ferreira<sup>a</sup>, Jens Nielsen<sup>a,b,\*</sup>

<sup>a</sup> Department of Biology and Biological Engineering, Chalmers University of Technology, Göteborg, Sweden

<sup>b</sup> BioInnovation Institute, Ole Maaløes Vej 3, DK2200, Copenhagen N, Denmark

### ARTICLE INFO

#### Keywords:

Cancer metabolism  
Genome-scale metabolic modeling

### ABSTRACT

Metabolic reprogramming is considered a hallmark of malignant transformation. However, it is not clear whether the network of metabolic reactions expressed by cancers of different origin differ from each other or from normal human tissues. In this study, we reconstructed functional and connected genome-scale metabolic models for 917 primary tumor samples across 13 types based on the probability of expression for 3765 reference metabolic genes in the sample. This network-centric approach revealed that tumor metabolic networks are largely similar in terms of accounted reactions, despite diversity in the expression of the associated genes. On average, each network contained 4721 reactions, of which 74% were core reactions (present in > 95% of all models). Whilst 99.3% of the core reactions were classified as housekeeping also in normal tissues, we identified reactions catalyzed by *ARG2*, *RHAG*, *SLC6* and *SLC16* family gene members, and *PTGS1* and *PTGS2* as core exclusively in cancer. These findings were subsequently replicated in an independent validation set of 3388 genome-scale metabolic models. The remaining 26% of the reactions were contextual reactions. Their inclusion was dependent in one case (*GLS2*) on the absence of *TP53* mutations and in 94.6% of cases on differences in cancer types. This dependency largely resembled differences in expression patterns in the corresponding normal tissues, with some exceptions like the presence of the *NANP*-encoded reaction in tumors not from the female reproductive system or of the *SLC5A9*-encoded reaction in kidney-pancreatic-colorectal tumors. In conclusion, tumors expressed a metabolic network virtually overlapping the matched normal tissues, raising the possibility that metabolic reprogramming simply reflects cancer cell plasticity to adapt to varying conditions thanks to redundancy and complexity of the underlying metabolic networks. At the same time, the here uncovered exceptions represent a resource to identify selective liabilities of tumor metabolism.

### 1. Introduction

Dysregulation of cellular metabolism has been implicated in the progression of several cancers as a consequence of oncogenic mutations (Cairns et al., 2011; Pavlova and Thompson, 2016; DeBerardinis and Chandel, 2016; Luengo et al., 2017). Despite the fact that the regulatory programs underlying the observed metabolic shifts should be tumor specific, it is also known that at the system level metabolic regulation is substantially similar between the tumor and its tissue of origin (Hu et al., 2013; Nilsson et al., 2014; Gatto et al., 2014). Even when shown to be selectively essential to cancer cells, the diversity of metabolic phenotypes associated with cancer questions the extent to which these regulatory programs are context-dependent rather than tumor-specific (Boroughs and DeBerardinis 2015; Gatto and Nielsen, 2016). For example, glucose metabolism was shown to vary within tumor regions and between human tumors in lung cancer patients (Hensley et al., 2016) or to depend strongly on the initiating oncogenic mutation and

the tumor tissue of origin in genetically engineered mice (Yuneva et al., 2012). Human metabolism is a highly complex system, accounting for thousands of reactions and metabolites that interact with the environment to form a connected and functional metabolic network (Mardinoglu et al., 2013). It is plausible that metabolic shifts so far associated with different cancers are yet another expression of the plasticity of these cells to ever-changing conditions in their genome and their environment (Meacham and Morrison, 2013), with the advantage that in metabolism this adaptation can leverage on the high redundancy and complexity of the human metabolic network. The aim of this study was therefore to characterize the landscape of metabolic reactions expressed in different cancers, to define their occurrence depending on the cancer type or mutations in key cancer genes, and finally to identify any difference from metabolic reactions normally expressed in human tissues.

Networks represent the natural structure of biological systems, including metabolism (Barabasi and Oltvai, 2004). Network-dependent

\* Corresponding author. Department of Biology and Biological Engineering, Chalmers University of Technology, Göteborg, Sweden.  
E-mail address: [nielsenj@chalmers.se](mailto:nielsenj@chalmers.se) (J. Nielsen).

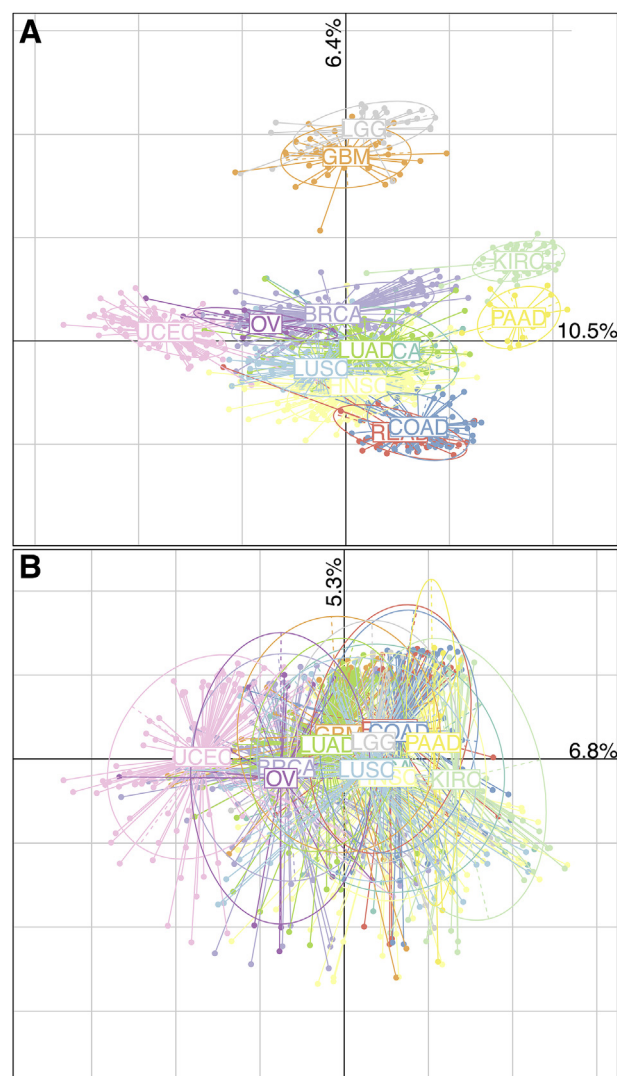
analyses not only enhance the interpretability of genome-scale data by providing a context, but also highlight knowledge gaps and experimental artifacts, e.g. networks can have been used to build a systematic gene ontology, where manual curation would have been biased towards well-studied cellular processes (Dutkowski et al., 2013). In cancer metabolism, network-based approaches have unveiled non-trivial metabolic dependencies of the studied cancers (Aspuria et al., 2014; Björnson et al., 2015; Ghaffari et al., 2015; Schultz and Qutub, 2016; Yizhak et al., 2014a, 2014b; Zielinski et al., 2017; Damiani et al. 2017; Peng et al., 2018). In light of this, we sought to reconstruct the metabolic networks of 1082 primary tumor samples in order to obtain a network-dependent landscape of metabolic reactions occurring in different cancers. These were reconstructed in the form of genome-scale metabolic models (GEMs) (Yizhak et al., 2015; O'Brien et al., 2015; Mardinoglu and Nielsen, 2015) in order to derive viable metabolic networks. GEMs encode all metabolic reactions performed by the gene products occurring in a sample, while ensuring that included reactions can carry flux during the simulation of essential metabolic tasks, such as synthesis of biomass constituents. Once the GEMs were reconstructed, we analyzed the underlying metabolic networks to address the above-defined goals of the study.

## 2. Results

### 2.1. Reconstruction of 917 cancer genome-scale metabolic models

In order to explore the landscape of metabolic reactions in cancer, we aimed to reconstruct the metabolic network in each primary tumor of a cohort consisting of 1082 patients, spanning 13 cancer types. Clinical, genetic, and gene expression data were retrieved for each sample from The Cancer Genome Atlas (TCGA). Each metabolic network was reconstructed in the form of a genome-scale metabolic model (GEM) (O'Brien et al., 2015), here-on referred to as model. The reconstruction was performed by mapping RNA-seq gene expression data from each tumor sample in a reference generic GEM of the human cell, *HMR2* (Mardinoglu et al., 2014), using the tINIT algorithm (Agren et al., 2014) and by estimating the probability that a gene is truly expressed in that sample using an *ad hoc* Bayesian statistical framework. As per algorithm formulation (Agren et al., 2012), each reconstructed GEM results in a connected and functional metabolic network. A connected GEM can carry flux in each reaction under standard medium conditions, and this requirement ensures for example that expressed genes that become isolated due to the malignant transformation are eliminated from the network. A functional GEM, on the other hand, can simulate a flux through 56 fundamental metabolic tasks, including biomass growth. Noteworthy, samples used in this study represented a mixed population of cells, predominantly constituted by cancer cells (> 80% of tumor nuclei in each sample according to TCGA quality criteria). Therefore, each GEM should be thought as the metabolic network expressed in the tumor, rather than solely representing the cancerous cells.

We devised quality criteria to ensure that the reconstruction algorithm did not introduce any substantial bias while including or excluding reactions in the final GEMs. These quality criteria measured for example the expected proportion of reactions included in the final GEM given the input probabilities (see Material and Methods). Out of the initial 1082 samples, 917 reconstructed GEMs passed the quality criteria (Fig. S1). We observed that many discarded models were derived from pancreatic adenocarcinoma (PAAD) and clear cell renal cell carcinoma (KIRC) samples. Specifically, GEMs for 15 PAAD samples (52%) and 53 KIRC samples (51%) were discarded because they failed to converge to an optimal solution (Fig. S2). The lack of convergence in the case of KIRC is consistent with the notion of a highly compromised metabolic network that we uncovered previously for this cancer type (Gatto et al., 2014, 2015). Finally, we inspected whether the genes included in a GEM have indeed a higher expression level in the

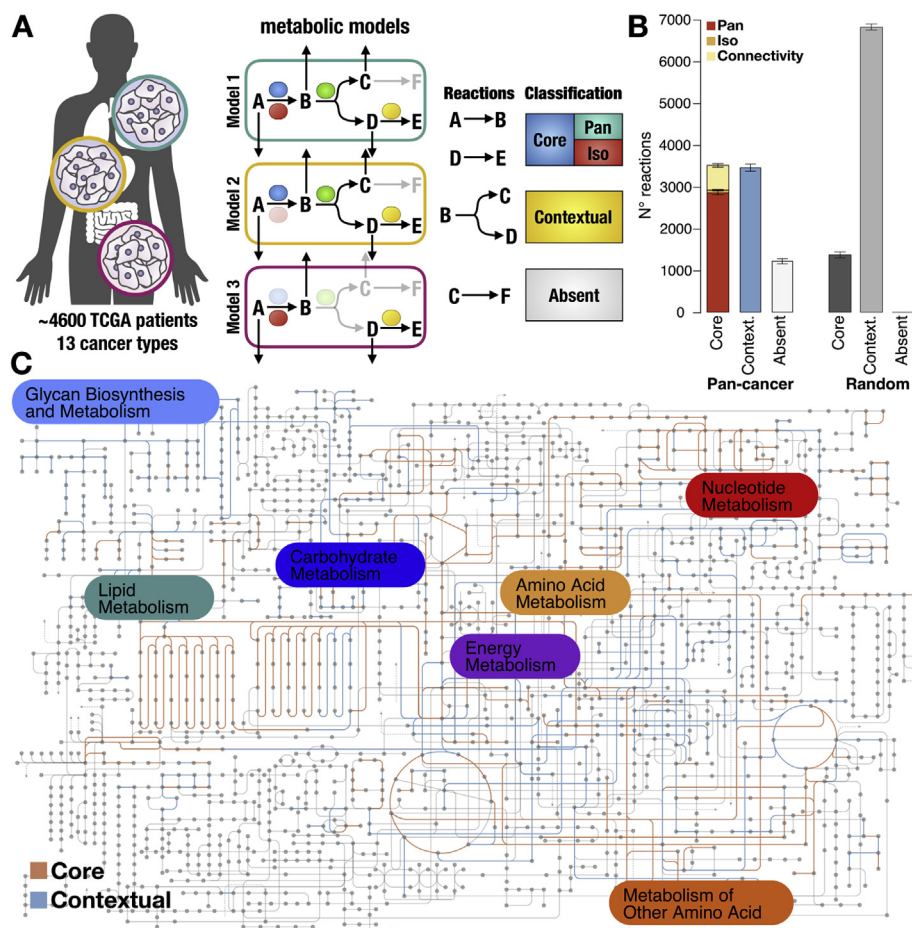


**Fig. 1.** – Principal component analysis of 917 cancer genome-scale metabolic models based on gene (A) and reaction (B) inclusion from the reference generic human model. Models are grouped by cancer type. Key: BLCA – Bladder adenocarcinoma, BRCA – Breast carcinoma, COAD – Colon adenocarcinoma, HNSC – Head and neck squamous cell carcinoma, GBM – Glioblastoma multiforme, KIRC – Clear cell renal cell carcinoma, LGG – Low grade glioma, LUAD – Lung adenocarcinoma, LUSC – Lung squamous cell carcinoma, OV – Ovarian carcinoma, PAAD – Pancreatic adenocarcinoma, READ – Rectum adenocarcinoma, UCEC – Uterine corpus endometrial carcinoma.

corresponding sample compared with the genes excluded. This was the case both when looking at individual models (Fig. S3B) and all models simultaneously (Fig. S3A). Nevertheless, we noted that a fraction of lowly expressed genes was still included in most reconstructed models, likely to preserve connectivity and functionality of the metabolic networks. Taken together, we were able to reconstruct GEMs representative of the metabolic network expressed in 917 cancers.

### 2.2. Classification of metabolic reactions in core or contextual

Compared to the reference GEM, *HMR2*, which contains 8184 reactions associated with 3765 genes, the reconstructed GEMs featured on average 4721 reactions and 1995 genes (Fig. S4). We observed small variations in the number of reactions, but substantial differences in the number of genes included across GEMs. We performed principal component analysis (PCA) on the gene inclusion matrix, that is the binary  $g \times m$  matrix where 1 indicates inclusion of *HMR2* gene *g* in the *m*-th



**Fig. 2.** – Classification of reactions based on their presence across 917 cancer genome-scale metabolic models. (A) Depiction of reaction classification. Core reactions are present in virtually all models, either by means of the same gene-reaction association (pan) or via different isoenzymes (iso). Contextual reactions are present only in a fraction of the models. Absent reactions are absent in virtually all models. (B) Number of core, contextual and absent reactions in the pan-cancer set and in a random set of 917 metabolic networks. The error bar represents the 95% confidence interval for the bootstrap statistics. See also Fig. S5 (C) KEGG map of human metabolism colored to distinguish core (red) from contextual (blue) reactions. (For interpretation of the references to color in this figure legend, the reader is referred to the Web version of this article.)

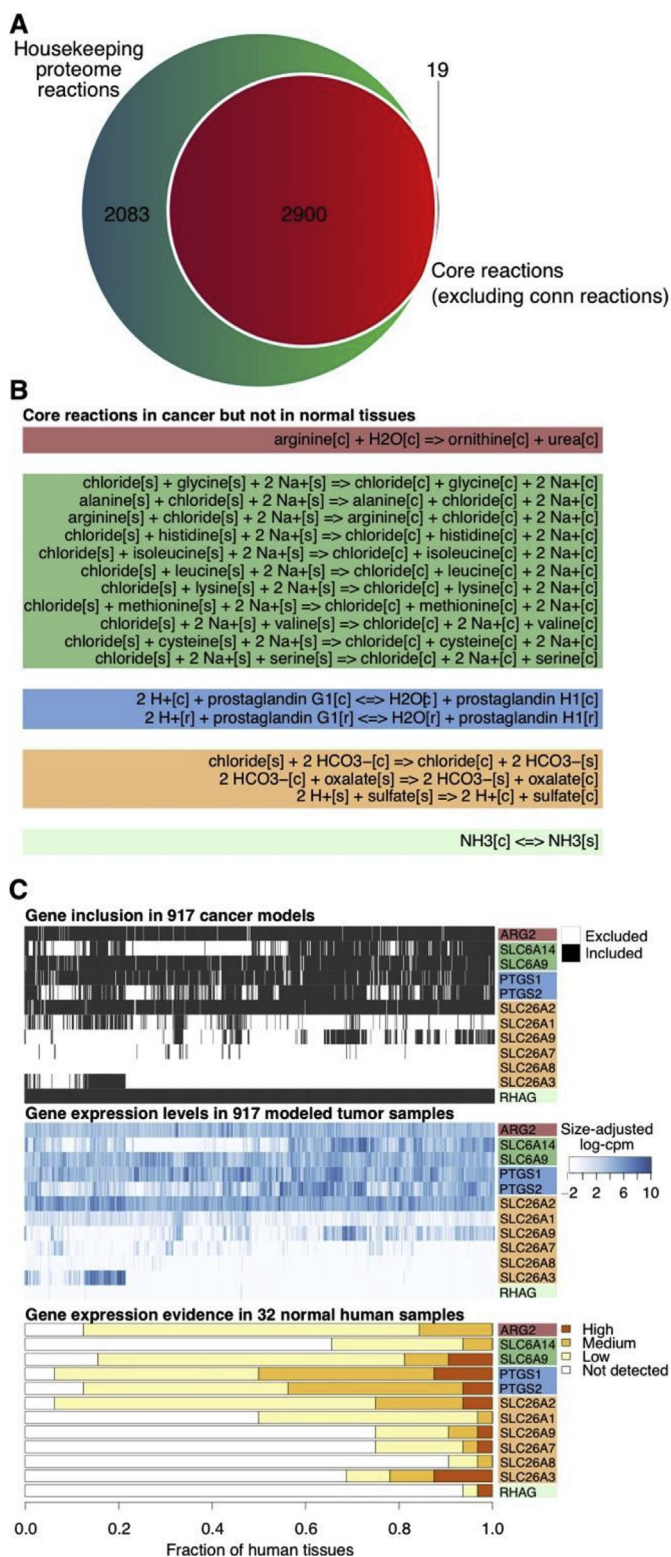
GEM, and 0 vice versa. PCA revealed that GEMs separated mostly by cancer type when looking at gene inclusion (Fig. 1A), even by taking into account that the reconstruction might be biased in the case of PAAD and KIRC types. Nevertheless, PCA on the reaction inclusion matrix virtually abolished the above-seen diversity among models (Fig. 1B). This suggest a considerable similarity in metabolic functions in cancer, in spite of gene expression heterogeneity.

To shed light on the extent of the similarity in terms of reactions across cancers, we classified a reaction as “core” if included in > 95% of all models, “absent” if excluded in > 95% of all models, and “contextual” if otherwise (Figs. 2A–S5). At this threshold, 3510 reactions were core (95% bootstrap confidence interval [CI], 3421 to 3599), 3455 were contextual (95% CI, 3367 to 3539), and 1219 were absent (95% CI, 1157 to 1284) (Fig. 2B). Since reactions can be associated with more than one gene (i.e. isoenzymes), we further distinguished core reactions into “pan” if included in all models because of the same gene-reaction association or “iso” if otherwise (Fig. 2A). Finally, some reactions with no gene associations in HMR2 (e.g. spontaneous reactions) were classified as core because present in > 95% of all models and they connected other core reactions. We termed these “conn” reactions. Among core reactions, 2850 were pan reactions (95% CI, 2807 to 2897), 69 were iso reactions (95% CI, 52 to 85), and 590 were conn reactions (95% CI, 546 to 632) (Fig. 2B). Considering an average of 4721 reactions per GEM, then 74% of all metabolic reactions in the expressed network were found in any given cancer. Importantly, we calculated a significantly higher fraction of core reactions than expected by chance, using 1000 sets of 917 randomly generated models, with equivalent gene inclusion diversity as in the reconstructed set, but no constrain on connectivity or functionality (Fig. 2B). A bird’s eye view on the generic KEGG metabolic map showed that the core reactions mostly cover primary metabolic pathways (e.g. energy, nucleotide and

lipid metabolism), while contextual reactions appear more peripheral (e.g. glycan metabolism, Fig. 2C), which was confirmed when we grouped core vs. contextual reactions in *HMR2* metabolic subsystems (Fig. S6). Taken together, these results suggest that, despite heterogeneity in the expressed metabolic genes, distinct cancers express a strikingly similar metabolic network, which can support flux connectivity and functionality and form the backbone of metabolism.

### 2.3. Analysis of core metabolic reactions in cancer

Core reactions are expected to represent the backbone of cell metabolism. Thus, we compared core reactions as defined here to the list of reactions carried by the housekeeping proteome in normal human tissues based on Human Protein Atlas (HPA) data (Uhlén et al., 2015) (Fig. 3A). Excluding conn reactions, 2900 out of 2919 core reactions (99.3%) were classified as housekeeping also in normal tissues, as expected. Noteworthy, cancer metabolism seemed to be generally associated with a large loss of function in metabolism, i.e. there were 2083 housekeeping reactions in normal cells that were not consistently present across all cancers. Noteworthy, all reactions belonging to lipoic acid metabolism, keratan sulfate biosynthesis, and mitochondrial  $\beta$ -oxidation of branched-chain fatty acids were associated with the housekeeping proteome but were not necessarily core in cancer. Conversely, 19 reactions were core only in cancers. These were lumped in 5 reaction clusters, defined as sets of reactions encoded by the same gene (s): the mitochondrial conversion of arginine to ornithine and urea (encoded by *ARG2*); amino-acid transport (*SLC6A9* and *SLC6A14*); prostaglandin biosynthesis (*PTGS1* and *PTGS2*); sulfate transport (*SLC26A1*, *SLC26A2*, *SLC26A3*, *SLC26A7*, *SLC26A8*, *SLC26A9*); and ammonia transport (*RHAG*). Except for ammonia transport by *RHAG*, all other reactions have at least one associated gene that was highly



expressed in the sample from which the model was reconstructed, further probing the consistency between the reconstruction method and the source expression data (Fig. 3B). At the same time, the corresponding proteins showed weak to no gene expression evidence in at least 30 out of 32 normal human tissues according to HPA (Fig. 3C). This is suggestive of a small acquisition in metabolic housekeeping functions in cancer compared to normal human cells.

**Fig. 3.** – Core reactions in cancer versus reactions carried out by the housekeeping proteome in normal human tissues. A) Venn diagram of the reactions classified as core in this study (excluding conn-reactions) (red circle) or housekeeping on the basis of the gene expression pattern in 32 normal human tissues as reported in HPA (green circle). B) Core reactions in cancer but not housekeeping in normal tissues based on HPA data. The cellular compartment is shown in square brackets (s, extracellular; c, cytosol; r, endoplasmic reticulum). C) Inclusion of core reactions not classified as housekeeping based on HPA data across the 917 cancer models and matched gene expression in the corresponding tumor samples. For comparison, the gene expression evidence in 32 normal human tissues for the genes encoding these reactions were retrieved from HPA. (For interpretation of the references to color in this figure legend, the reader is referred to the Web version of this article.)

Among the core reactions, we identified 69 core-iso reactions, which were included in all models but due to different gene-reaction associations. These were lumped in 16 reaction clusters (Fig. 4A). For example, the conversion of N-acetylputrescine to N4-acetylaminobutanol in the metabolism of arginine can be carried out in principle by 5 different amine oxidases (encoded by *AOC1*, *AOC2*, *AOC3*, *MAOA*, *MAOB*), whose expression varied considerably among samples for which GEMs had been reconstructed (Fig. 4B). We sought to identify if inclusion of a given isoenzyme in the GEM correlated with particular features of the modeled sample, specifically with the sample cancer type and with the presence of mutations in key cancer genes. We observed that in all cases the expression of a particular isoenzyme was significantly associated by the sample cancer type, but in no instance by the presence of a particular mutated gene (likelihood ratio test,  $FDR < 0.001$ ). This was well illustrated by the example of N-acetylputrescine degradation (Fig. 4C). This reaction was likely to be carried out by *AOC1-MAOA* gene products in rectal adenocarcinoma but *AOC3-MAOB* in invasive breast carcinoma. To provide a simplified yet exhaustive view of these associations, we computed for each cancer type the isoenzyme with the most frequent association with a given reaction cluster (Fig. 4A). Collectively, these results suggest that the inclusion of different genes across models underlies the inclusion of the same reaction. This may explain why models displayed a large degree of separation when compared in terms of gene inclusion but not when compared in terms of reaction inclusion (Fig. 1).

#### 2.4. Analysis of contextual metabolic reactions in cancer

Contextual reactions were included only in a fraction of all models. This can be explained in view of how the algorithm treated the input data. A reaction was prone to be excluded from a GEM in two cases: first, the expected expression of the associated gene(s) in the corresponding sample was not distinguishable from noise; or second, the expected expression of genes associated with neighboring reactions in the corresponding sample was not distinguishable from noise, hence prejudicing the connectivity of the network. An example of contextual reactions was the *ALOX12*-mediated peroxidation of 12(S)-hydroperoxy-5Z,8Z,10E,14Z-eicosatetraenoic acid (12(S)-HPETE) to 12(S)-hydroxyeicosatetraenoic acid (12(S)-HETE), a reaction in the metabolism of arachidonic acid that was included only in 163 out of 917 GEMs (17.8%). This was reflected by the expression level of *ALOX12* in the corresponding samples (Fig. 5A). Again, we sought to identify if inclusion of contextual reactions depended on the cancer type or on the presence of mutated genes in the sample. Out of 3,455, 3269 reactions (94.6%) showed a significant association with the cancer type, while 1 reaction had a significant association with a mutated gene (likelihood ratio test,  $FDR < 0.001$ ). As an example for the former case, the cancer type-dependency of the *ALOX12*-catalyzed reaction was evident from *ALOX12* expression level in the different types, which was particularly high in head and neck and lung squamous cell carcinomas and in bladder adenocarcinomas (Fig. 5B). As for the latter case, the only mutated gene-associated reaction was the mitochondrial hydrolysis of





**Fig. 5.** – Contextual reactions in cancer were mostly dependent on the cancer type with some of these possibly representing specific gain or loss of metabolic functions compared to the matched normal tissues. A) An example of contextual reaction, the cytosolic conversion of 12-HPETE to 12-HETE by arachidonate 12-lipoxygenase, ALOX12, and its expression plot across models. B) Expression boxplots for ALOX12 binned by cancer type. C) Barplots for the fraction of models from a cancer type (columns) that contain 4 representative contextual reactions (rows) for each cancer-type consensus clusters (horizontal colored bars). D) Heatmap of the fraction of models from a cancer type (columns) that contained the 49 most representative contextual reactions (rows) for the four cancer-type consensus clusters (see Fig. S8, colored horizontal bars). A blue entry indicates that all models belonging to that cancer type included a given reaction (white if vice versa). Below, maximum expression detected in matched normal tissues among the genes encoding for each representative contextual reaction. The reactions' cellular compartment is shown in square brackets (s, extracellular; c, cytosol; m, mitochondria; g, Golgi apparatus). Key: BLCA – Bladder adenocarcinoma, BRCA – Breast carcinoma, COAD – Colon adenocarcinoma, HNSC – Head and neck squamous cell carcinoma, GBM – Glioblastoma multiforme, KIRC – Clear cell renal cell carcinoma, LGG – Low grade glioma, LUAD – Lung adenocarcinoma, LUSC – Lung squamous cell carcinoma, OV – Ovarian carcinoma, PAAD – Pancreatic adenocarcinoma, READ – Rectum adenocarcinoma, UCEC – Uterine corpus endometrial carcinoma. (For interpretation of the references to color in this figure legend, the reader is referred to the Web version of this article.)

glutamine to glutamate encoded by glutaminase-2 (*GLS2*), which was preferentially excluded in models for tumors with *TP53* mutations (Fig. S7).

In order to reduce the complexity of cancer-type dependency in contextual reactions, we computed for each cancer type the fraction of GEMs where the reaction was included (e.g. 0 means that no GEMs from samples belonging to a given cancer type included that contextual reaction). Next, we performed consensus hierarchical clustering to detect consensus clusters of cancer types where contextual reactions appeared to segregate (Fig. S8). Four clusters were identified: brain tumors (low grade glioma and glioblastoma multiforme); kidney-pancreatic-colorectal tumors (clear cell renal cell carcinoma and pancreatic, colon, and rectum adenocarcinoma); female reproductive system tumors (ovarian cancer and uterine corpus endometrial cancer); other tumors (bladder and lung adenocarcinomas, breast carcinoma, head and neck and lung squamous cell carcinomas). Finally, we performed random forest cross-validated variable selection to select contextual reactions that exhibited the strongest representativeness to either cluster. We found 49 representative contextual reactions. For example, the transport of sulfolithocholate was preferentially included in brain tumor GEMs (mean in cluster, 82.4%; outside cluster, 19.7%); the conversion of phenylalanine to phenethylamine was almost exclusively present in kidney-pancreatic-colorectal tumor GEMs (in cluster, 89.9%; outside, 1.9%); the conversion of cytosolic malate to pyruvate was less common in female reproductive system tumor GEMs (in cluster, 56.4%, outside, 99.3%); and the above-seen conversion of 12(S)-HPETE to 12(S)-HETE was mostly included in other tumor GEMs (in cluster, 27.3%, outside, 1.9%) (Fig. 5C).

Since virtually all contextual reactions displayed cancer-type dependency, which in turn appeared to cluster by human tissue similarity, we interrogated whether the context-specificity of these 49 representative reactions simply mirrored the expression patterns of the associated genes in the normal tissues of origin, as previously suggested for metabolic genes (Hu et al., 2013; Gatto et al., 2014). Therefore, we retrieved RNA-seq gene expression data from HPA for all putative tissues of origin for the cancer types in this study (except breast, unavailable). We then extracted which gene had the maximum expression level in each tissue among all genes associated with each reaction. As hypothesized, the expression patterns in normal tissue closely resembled the availability of a given reaction in the GEMs of their malignant counterpart (Fig. 5D). However, we noticed some exceptions, both in terms of gain and loss of metabolic function. As an example of gain of function, the conversion of N-acetylneuraminic acid-9-phosphate to N-acetylneuraminic acid was present in all GEMs except in some belonging to the cluster of female reproductive system tumors. However, the associated gene, *NANP*, is not expressed in any major normal tissue (range, 0 to 4 FPKM). As a second example, the sodium-dependent transport of mannose and the absorption of cholesterol were both featured in GEMs belonging to the cluster of kidney-pancreatic-colorectal tumors. However, the encoding genes, *SLC5A9* and *NPC1L1* respectively, were not expressed in the matched normal tissues, but only in the duodenum and small intestine (range, 52 to 55 FPKM and 41 to 45 FPKM resp.). An example of loss of function was the mitochondrial

oxidation of indole-3-acetaldehyde to indoleacetate in tryptophan catabolism, which is catalyzed by several NAD-dependent aldehyde dehydrogenases with shallow substrate specificity (*ALDH1B1*, *ALDH2*, *ALDH3A2*, *ALDH7A1*, *ALDH9A1*). While these enzymes were largely expressed in all major normal tissues, the catalyzed reaction was mostly absent in all cancer GEMs, except for a fraction of models belonging to the cluster of kidney-pancreatic-colorectal tumors.

In conclusion, contextual reactions represented on average 26% of all metabolic reactions in any given cancer network. This analysis revealed that the context-specificity was often related to the cancer type. In particular, most contextual reactions segregated in four tissue clusters and, with few notable exceptions, this pattern resembled the expression profiles of the cancer tissue of origin.

#### 2.5. Expression of contextual reactions correctly distinguished cancer type clusters

We sought to validate the 49 contextual reactions here found to distinguish the metabolic networks of four cancer type clusters defined above. To this end, we retrieved expression data from TCGA for 66 genes encoding these contextual reactions in an independent cohort of 4462 tumor samples spanning the same 13 cancer type. Next, we trained a random forest classifier on 2231 samples to assign samples to one of the four cancer type clusters based on the expression level of this 66 gene signature (Fig. S9A). We then tested the so-trained classifier on the remaining 2231 samples (Fig. S9B). The out-of-bag error was 3.38% in the training set and 2.9% in the test set. The multiclass area-under-the-curve (AUC), as defined by Hand and Till (2001), was 0.973.

The classification performance might be biased due to inherent differences in the gene expression profile of the tissue of origins in the four clusters. In other words, any set of 66 genes could distinguish the four clusters because their expression is supposedly modulated in a tissue-specific fashion also in healthy conditions. To control for this, we repeated the above multiclass classification using 1000 random 66 gene-signatures and verified that the classifier based on the expression of contextual reactions outperformed the random classifier in 98.8% cases (permutation test  $p = 0.012$ , Fig. S9C). This suggests that not to any set of 66 genes was differentially regulated between these cancer type clusters simply because of inherent differences in expression in their respective tissue of origins. To further check whether these 66 genes were differentially expressed between cancer type clusters, but yet substantially similar in their corresponding normal tissues, we performed differential expression analysis using a generalized linear model to fit gene expression to the cancer type cluster while controlling for the matched-normal tissues of origin. We retrieved 438 tumor-adjacent normal samples from TCGA for the same cancer types as above except brain tumors, for which only 5 normal samples were available (sample size range per cluster: 24–287). Thus, we analyzed gene expression for the three remaining cancer type clusters (accounting for 3867 tumor samples, sample size range per cluster: 459–2452). We observed that 64 of 66 genes in the signature (97%) displayed differential regulation between cancer type clusters (FDR < 0.001). For example, *AOC1* is moderately expressed in the female reproductive

system tumor cluster, but lowly expressed in the other tumor cluster (FDR =  $9 \times 10^{-69}$ , Fig. S9D). For 48 of 66 genes, the expression was also significantly different from at least one cluster of matched normal samples. However, importantly, we found no evidence of expression difference between the corresponding clusters of matched normal samples (FDR > 0.01). For example, *AOC1* expression is overexpressed in female reproductive system tumors compared to matched normal samples (FDR =  $2 \times 10^{-4}$ ). But normal samples from the female reproductive system had similar *AOC1* expression to normal samples from tissues matched to the other tumor cluster (FDR = 0.988). Besides *AOC1*, we computed the most significant gene for the remaining two cluster comparisons: *ALDH2*, repressed in the other tumor cluster compared to kidney-pancreatic-colorectal tumor cluster, but similarly expressed in the respective tissue of origins; and *CYP3A5*, very lowly expressed in female reproductive system tumor cluster compared to the kidney-pancreatic-colorectal tumor cluster, yet again similarly expressed in the respective tissues of origin (Fig. S9D).

Taken together, even though gene expression analysis does not represent direct evidence of the occurrence of the underlying reactions and fails to account for the systems of metabolic reactions in which a gene is expressed, these results in a large independent cohort suggest that the 49 contextual reactions in the different cancer type clusters arise from cancer type-specific regulation of the corresponding genes that are not attributable to substantial differences in the gene expression profiles of the matched tissue of origins. This argues in favor to the fact that these contextual reactions may represent cancer type-specific metabolic liabilities.

## 2.6. Validation of core reaction analysis in an independent set of cancer GEMs

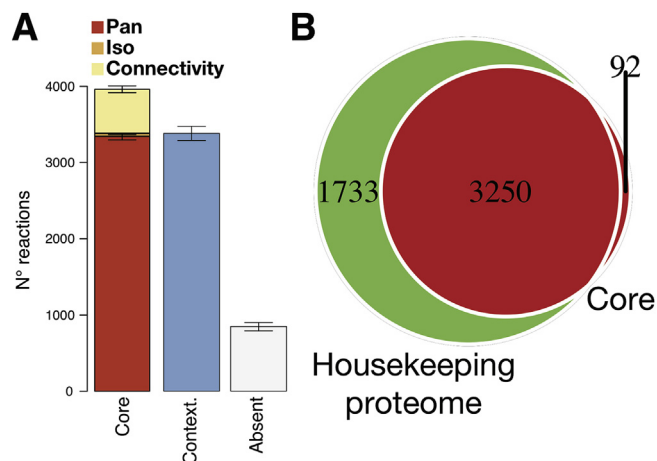
Our analysis suggested that the metabolic network of cancer was for the vast majority composed of core reactions (74% of all reactions), largely independent of cancer type, and, with the exception of 19 reactions, completely overlapping with the metabolic reaction network encoded by the housekeeping proteome. To confirm these findings, we retrieved an independent set of 3933 primary tumor samples from TCGA for which we reconstructed as many GEMs by adopting the same reconstruction procedure but a distinct - more computationally scalable

- method to estimate the probability of expression for each metabolic gene in the sample. The previously adopted quality control criteria returned a final set of 3388 functional and connected GEMs. Despite the fact that the more scalable method resulted in the inclusion of a slightly higher average number of reactions per GEM ( $5063 \pm 207$ ) and thereby number of core reactions ( $N = 3,957$ , Fig. 6A), the proportion of core reactions versus contextual reactions in this validation set was concordant with the original set (78% vs. 76% core reactions and, conversely, 22% vs. 24% contextual reactions in the validation vs. original set respectively). In addition, there was a significant overlap in the list of core reactions between the two sets ( $N = 3452$  out of 3510 (98%) in the original set and 3957 (87%) in the validation set, OR = 314,  $p < 10^{-15}$ ). After filtering out 582 reactions classified as “conn”, we were able to replicate the previous finding that 96.3% of all core reactions in cancer were housekeeping reactions, i.e. expressed in the greatest majority of normal tissues according to HPA (note that 33 core reactions were excluded in the comparison as HPA had no data on the associated genes, Fig. 6B). Consistent with the original set, also in the validation set we observed a small acquisition of 92 reactions core exclusively in cancer. Of the 19 reactions classified as core only cancer in the original set, 18 were found also in the validation set, a significant over-representation (OR = 1159,  $p < 10^{-15}$ ). Overall, these results corroborate: first, that most cancers expressed the same backbone of metabolic reactions mostly with housekeeping functions in normal human tissues; and second, that there exist a small set of metabolic reactions seemingly present in any cancer but without housekeeping functions in the normal tissues.

## 3. Discussion

Reprogramming of cellular metabolism is a hallmark of malignant transformation, as suggested by accumulating evidence that uncovered tumor-specific molecular mechanisms of metabolic regulation (Cairns et al., 2011; Pavlova and Thompson, 2016). However, only few studies explored tumor metabolism at the systems level (Gatto and Nielsen, 2016; Zielinski et al., 2017; Peng et al., 2018). Since networks are the natural structure of complex systems like metabolism, in this study we adopted a network-centric approach to characterize the landscape of metabolic reactions expressed in different cancers. Despite the substantial diversity of the genes included in each model across cancers, the resulting metabolic networks were strikingly similar in terms of included reactions, probing the robustness and redundancy of the human metabolic network.

The overwhelming majority of core reactions in this study were carried out by enzymes classified as housekeeping in normal tissues. This argues that cancer cells, regardless of their origin, vastly maintain the backbone of cellular metabolism and no specific metabolic function is universally acquired as a result of the transformation. Potential exceptions to this could be represented by the residual core reactions, which were so-classified only in cancer metabolism networks. While inclusion of these reactions in all GEMs certainly depended on network connectivity and functionality, we also observed an obvious correlation with gene expression in the underlying cancer samples. There could be many alternative biological reasons why these reactions are universally present in cancer metabolic networks while being seldom expressed in normal human tissues. Perhaps an intriguing pattern is the role of both *ARG2* and *PTGS1/2* in the generation of metabolites that control endothelial cell proliferation (Li et al., 2002, Wang and DuBois, 2010) and activation of the immune system (Wang and DuBois, 2010; Bansal and Ochoa, 2003), which are likely to be dispensable metabolic functions in the majority of healthy human cells. Another interesting observation is the presence of core-iso reactions, included in all models because at least one isoenzyme was expressed in the modeled tumor sample. Core-iso reactions were previously observed by Hu et al., for example in the case of aldolase isoenzymes (*ALDOA*, *ALDOB*, *ALDOC*) (Hu et al. 2013). Here, we complemented these findings and verified that in all cases the



**Fig. 6.** – Validation of the analysis of core reaction in cancer in an independent set of 3388 GEMs. (A) Classification of reactions based on their presence across 3388 cancer genome-scale metabolic models in core, contextual and absent reactions. The error bar represents the 95% confidence interval for the bootstrap statistics. (B) Venn diagram of the reactions classified as core in the validation set (excluding conn-reactions) (red circle) or housekeeping on the basis of the gene expression pattern in 32 normal human tissues as reported in HPA (green circle). (For interpretation of the references to color in this figure legend, the reader is referred to the Web version of this article.)

differential expression of isoenzymes could be attributed to differences in cancer type between the modeled samples. For example, oxidation of primary amines (like acetylputrescine) is possible in all models because at least one among the spectrum of monoamine oxidases (*MAOA* and *MAOB*) and amine oxidases (*AOC1*, *AOC2*, *AOC3*) was expressed in each underlying sample.

Contextual reactions were present only in a fraction of the reconstructed metabolic networks. In one case, which is the mitochondrial synthesis of glutamate from glutamine encoded by *GLS2*, the contextual reaction was strongly associated with absence of *TP53* mutations in the modeled sample (regardless of its cancer type). This result is strikingly concordant with the notion that p53 directly controls *GLS2* expression in either stressed or not stressed conditions (Hu et al., 2010) and further suggests that the presence of the underlying reaction is partly dictated by mutations in *TP53* independent of the cancer type. In 94.6% of the other cases, the inclusion of contextual reactions could be attributed to differences in cancer types, which we narrowed down to differences across four cancer type clusters. In particular, 49 contextual reactions were strongly representative for the four cancer type clusters because of differential regulation of the associated genes across cancers of different types, irrespective of the expression level in the corresponding tissues of origin. At the same time, in general, the pattern of contextual reaction inclusion in a model largely resembled the expression pattern of the associated gene(s) in the matched normal tissue of origins. Exceptions to this were noted for few reactions, for example the mitochondrial oxidation of indole-3-acetaldehyde to indoleacetate in tryptophan catabolism, by several NAD-dependent aldehyde dehydrogenases (*ALDH1B1*, *ALDH2*, *ALDH3A2*, *ALDH7A1*, *ALDH9A1*). This case is intriguing because of *ALDH2*: its cancer type-cluster specificity and the substantial expression difference with the matched normal tissues seem both to stem from the underlying patterns of *ALDH2* expression (Fig. S9D). *ALDH2* is moderately to highly expressed in most normal samples, but it is strongly repressed in all cancers except those belonging to the kidney-pancreatic-colorectal cluster, as observed in our network-centric approach (Fig. S9C). For the other cases, we could not derive equally straightforward relations with gene expression, likely due to the complexity of metabolic network around these reactions. An interesting outcome of this analysis is that the expression of the 66 genes encoding these 49 contextual reactions could accurately classify tumor samples into four groups of cancer types. Although we did not perform a systematic review of the physiological or therapeutic importance of each of these 49 reactions in the four cancer groups, we noted an apparent enrichment of intracellular transport processes and reactions within eicosanoids and xenobiotics metabolism in this list. These latter two pathways are known to be involved in cancer progression and initiation given the role of eicosanoids in shaping a pro-inflammatory tumor microenvironment and the promotion of genotoxicity by reactive intermediates generated in the metabolism of xenobiotics (Wang and DuBois, 2010; Nebert and Dalton, 2006). In addition, we previously observed that specifically these two metabolic pathways were exquisitely correlated with the occurrence of cancer-associated mutations (Gatto et al., 2016). Overall, this analysis points to metabolic reactions that not only may represent unique vulnerabilities in cancer, but also are common between cancer types in the same group. Such reactions might represent drug targets common across the different cancer types in each group.

Modeling metabolic networks at genome scale comes with challenges, mostly arising from knowledge gaps in the biochemistry of several metabolic reactions (Monk et al., 2014). The gene-reaction associations in this study were occasionally inferred, since the specificity and *in vivo* activity of some enzymes is unknown. Even though we drew our conclusions based on stringent statistical models, these shortcomings may introduce a systematic bias that is difficult to estimate and control for in downstream analysis. Hence, we expect that some quantitative claims will be revisited in light of improved knowledge on the biochemistry of human metabolism. An alternative approach could

be (differential) expression analysis for each gene associated with a metabolic reaction, as we and others have implemented previously (Hu et al., 2013; Nilsson et al., 2014; Gatto et al., 2014; Zielinski et al., 2017). However, we adopted a network-centric approach because reactions might be expressed or not depending on the availability of the neighboring reactions or, in a broader context, of a metabolic pathway or even a metabolic function; or they could be carried out by differentially expressed isoenzymes. This context is lost in canonical gene expression analyses. The network structure may occasionally override information coming from gene expression data. This provides an opportunity for discovery, but at the same time complicates the interpretability of certain results in light of gene expression evidence, as in the case of *RHAG* expression in Fig. 3C. This can also result in the opposite situation, i.e. metabolic genes seemingly expressed in the tumor yet absent at the reaction level because either unconnected or supporting an unknown metabolic function. Another challenge is the paucity of large-scale cell type-specific data. Despite the TCGA requirement that a sequenced tissue should contain > 80% of tumor nuclei, its reconstructed network does not necessarily reflect the reactions occurring in a single cancer cell nor it can dissect their distribution in the different clones in the tumor. Rather it compiles all the reactions expressed in the cell population of that tumor. Whilst a limitation, this acknowledges the contribution of stromal and immune cells to the metabolic plasticity of tumor (Ghesquiere et al., 2014).

In conclusion, our findings suggest that tumors express a metabolic network of core reactions with housekeeping functions and cancer type-specific contextual reactions that are virtually overlapping with the corresponding normal tissue of origin. In light of this vast similarity, metabolic reprogramming implicated with cancer transformation might just reflect the plasticity of tumors to adapt to varying environmental and genetic factors by leveraging on the complexity of the metabolic network. This also suggests that targeting tumor metabolism may result in either toxicity or resistance, because the underlying metabolic network supports essentially the same metabolic functions as in the matched normal tissue. Nonetheless, exceptions to this similarity with normal tissues were uncovered in this study, and we believe that this is a valuable resource to further investigate selective liabilities of tumor metabolic networks.

#### 4. Materials and methods

**Reconstruction of tumor genome-scale metabolic models.** Read count tables for 18,956 genes from 1082 primary tumor samples in the original set and 3635 in the validation set were retrieved from The Cancer Genome Atlas (TCGA), for which both gene expression and mutation data were simultaneously present. These samples were sequenced using Illumina HiSeq or Genome Analyzer RNA-seq platforms. For each sample, counts were transformed into log-counts-per-million (log-cpm) and multiplied with a normalization factor that accounts for differences in library sizes across samples, which was calculated using the *edgeR* R-package (Robinson et al., 2010). The resulting size-adjusted log-cpm for a gene *i* is an expression level measurement comparable across samples (Law et al., 2014).

In the original set, the probability that a gene is truly expressed in an individual sample was estimated using a Bayesian statistical framework by computing the probability that its expected distribution of read counts in that sample is better explained by the expected distribution of read counts of genes that should not be expressed in that samples. The expected size-adjusted log-cpm for gene *i* in sample *j* was calculated based on specific features of sample *j* (like the belonging to a certain cancer type or the presence of a mutation in a key gene) using a pre-specified generalized linear model (*I*) from (Gatto et al., 2016):

$$\theta_{\text{gene}_i} = E(\log\text{-cpm}_{i,j}) = \mu_{i,j} \sim (x_j)^T \beta_i \quad (1)$$

where the expected size-adjusted log-cpm for gene *i* in sample *j* is equal

to the linear combination of sample feature variables ( $x_j$ ) and coefficients for the effect of that feature on gene  $i$  ( $\beta_i$ ). The coefficients were fitted for each gene to the observed size-adjusted log-cpm across the 1082 samples by ordinary least squares regression using *voom* R-package (Law et al., 2014). The linear model for the expected expression of gene  $i$  is referred to as  $\theta_{\text{gene}_i}$ . We reasoned that gene  $i$  is truly expressed in sample  $j$  if its observed size-adjusted log-cpm is better explained by a normal distribution with parameters derived from  $\theta_{\text{gene}_i}$ , rather than by linear models constructed on the expected size-adjusted log-cpm of genes that are not supposed to be expressed in sample  $j$ . We selected 7 testis-specific gene products as “noise” genes: *ACRV1*, *ADAM2*, *BOLL*, *DKKL1*, *FMR1NB*, *TEX101*, and *ZBPB2*. These proteins are not detected in any other tissues according to the Human Protein Atlas (Uhlén et al., 2015), yet reads that align to their loci are seldom detected by the RNA-seq platform. The posterior probability that gene  $i$  is truly expressed in sample  $j$ , or in other words the likelihood of the linear model  $\theta_{\text{gene}_i}$  for gene  $i$  being better than alternative linear models  $\theta_{\text{gene}_g}$ , was than calculated using the Bayesian formula (2):

$$\Pr\left(\theta_{\text{gene}_i}, \mu_{i,j} \mid \log\text{-cpm}_{i,j} = \log\text{-cpm}_{i,j\text{observed}}\right) = \frac{\Pr\left(\log\text{-cpm}_{i,j} = \log\text{-cpm}_{i,j\text{observed}} \mid \theta_{\text{gene}_i}, \mu_{i,j}\right) \Pr\left(\theta_{\text{gene}_i}, \mu_{i,j}\right)}{\Pr\left(\log\text{-cpm}_{i,j} = \log\text{-cpm}_{i,j\text{observed}} \mid \theta_{\text{gene}_i}, \mu_{i,j}\right) \Pr\left(\theta_{\text{gene}_i}, \mu_{i,j}\right) + \sum_{g=1}^7 \Pr\left(\log\text{-cpm}_{i,j} = \log\text{-cpm}_{i,j\text{observed}} \mid \theta_{\text{gene}_g}, \mu_{g,j}\right) \Pr\left(\theta_{\text{gene}_g}, \mu_{g,j}\right)} \quad (2)$$

where the prior probability of the linear model  $\theta_{\text{gene}_i}$  was set equal to 50% and the prior probabilities for each alternative linear model  $\theta_{\text{gene}_g}$  derived from each of 7 “noise” genes was equally split so that they would sum to 50%. The output is a  $m \times n$  matrix of posterior probabilities  $P$ , where  $m$  is 18,956 genes and  $n$  is 1082 samples, and  $P_{m,n} \in (0,1)$ .

In the validation set, the probability that a gene is truly expressed in an individual sample was computed using a distinct more computationally scalable method. The probability was estimated as the chance of randomly finding a non-zero difference between the median in the population of expression value for the 7 “noise” genes and the expression value for that gene in that sample, i.e. the p-value of a 1-sample Wilcoxon test. The output is a  $m \times n_2$  matrix of probabilities  $P$ , where  $m$  is 18,956 genes and  $n_2$  is 3933 samples, and  $P_{m,n_2} \in (0,1)$ . Compared to the previous method, this resulted in a less conservative threshold to declare a gene expressed and therefore in the inclusion of more reactions in the final GEM.

The probabilities' vector for sample  $j$  was used to score each reaction in the automatic reconstruction of a genome-scale metabolic model (GEM) from the reference generic human GEM, *HMR2*. *HMR2* contains 8184 reactions associated with 3765 genes. The reconstruction was performed using the tINIT algorithm, as described previously (Agren et al., 2014). Briefly, the algorithm implements a mixed-integer linear problem (MILP) that, starting from a reference metabolic network (in this case *HMR2*), maximizes the inclusion in the final model of reactions that are positively scored while maximizing the exclusion of reactions that are negatively scored. Other constraints in the MILP guarantee that the final model features a connected and functional network, in that it can simulate a flux in each reaction under standard medium conditions, and it can simulate a flux through 56 fundamental metabolic tasks, including biomass growth (Agren et al., 2014). In each reconstructed sample  $j$ , the reaction score was equal to the posterior probability of the associated gene in sample  $j$ , as returned from (2). If more than one gene was associated with a reaction, the most positive score was retained because indicative that the reaction can be carried out by at least one expressed gene product, as previously implemented (Agren et al., 2012, 2014). We selected a threshold equal to 0.99 that we subtracted to the posterior probabilities' vector for sample  $j$ , before scoring the reactions, so that only genes with a posterior probability > 99% to be truly

expressed (as defined above) have positive values and will tend to be included by tINIT. We selected this threshold as an arbitrary metric reflecting 99% statistical confidence, which we reasoned to be a conceptually superior over arbitrary thresholds based on expression scores as previously implemented in automatic reconstruction of GEMs (Agren et al., 2012; Wang et al., 2012; Vlassis et al., 2014). In the validation set, the selected threshold was 0.98 due to small estimation differences to compute probabilities between the two methods. For the scope of the validation analysis and as observed empirically in the results, the two methods resulted in largely similar analysis outcomes probing the relatively low sensitivity to this parameter choice. All other parameters for the reconstruction were otherwise identical across sets and across samples, in particular the maximum allowed relative gap in the optimal solution returned from the MILP was set to 5%. The reconstruction was implemented in Matlab 7.11 using Mosek v7 as solver. All models and reconstruction scripts are made available in: <https://github.com/SysBioChalmers/pan-cancer-GEMs>.

**Quality control of reconstructed tumor GEMs.** We evaluated the quality of the reconstruction according to the following criteria: convergence to an optimal solution; the accuracy of gene inclusion should be > 90%; the corresponding Matthews correlation coefficient, an unbiased estimator of accuracy, should be > 0.8; and the number of reactions added during the reconstruction in order to be able to perform the 56 metabolic tasks considered in the tINIT algorithm should be < 1% of all reactions included in the model. These thresholds were selected to prevent reconstructions of questionable quality to be included in downstream analysis, in consideration that most reconstructions converged successfully and only some outliers fall below the selected values (Fig. S1). The accuracy for model  $k$  derived from sample  $j$  was calculated in terms of true/false positives/negatives in the final model  $k$ , where a true positive is a gene with posterior probability > 99% in sample  $j$  and included in model  $k$  and a true negative is a gene with posterior probability  $\leq$  99% in sample  $j$  and excluded in model  $k$  (false positive/negative if vice versa). Principal component analysis (PCA) to evaluate similarity of the 917 reconstructed GEMs was performed on the gene/reaction inclusion matrix, where each row is a gene/reaction in the reference GEM, *HMR2*, and each column represents a reconstructed GEMs. A matrix cell is equal to 1 if the corresponding *HMR2* gene/reaction is included in the corresponding reconstructed GEM. PCA was performed on unscaled data with mean centering using the *ade4* R-package (Dray and Dufour, 2007).

**Reaction classification and analysis.** A *HMR2* reaction was classified as “core” if included in > 95% of all reconstructed GEMs; “absent” if included in less < 5% of all reconstructed GEMs; “contextual” if otherwise. We selected these thresholds because the underlying distribution seemed to reach a plateau at these values (Fig. S5). Core reactions were further sub-classified into “pan” if their inclusion was due to inclusion of the same associated gene(s) in > 95% of all reconstructed GEMs and “iso” if otherwise, meaning that different isoenzymes are present in different models for that core reaction. We estimated how robust was the number of core, contextual and absent reactions to potential outliers in the set of reconstructed GEMs by bootstrapping the count of each category 1000 times. We computed the count of core, contextual and absent reactions in 1000 sets of 917 random GEMs, reconstructed by including  $\nu$  random genes from the gene-reaction association matrix of *HMR2*, where  $\nu$  is a  $1 \times 917$  vector equal to the number of genes included in the actual set of 917 GEMs reconstructed using tINIT. Core and contextual reactions were mapped to the generic KEGG metabolic map using iPath2 (Yamada et al., 2011) (if univocally identified using KEGG IDs) and grouped according to *HMR2* metabolic sub-systems.

Core reactions in tumors were compared to housekeeping reactions in normal tissues, so classified based on Human Protein Atlas (HPA) evidence for the associated genes. We compiled this list by including genes that were either expressed (> 0.5 FPKM) in all 32 normal tissues considered by HPA (“expressed in all” HPA category); or in > 30

normal tissues; or expressed in a subset of the 32 tissues that share little functional similarity, e.g. *CBLN3* in cerebellum, lung and small intestine, which suggests that the gene may be expressed promiscuously across human tissues (“mixed” HPA category). We counted 69 core-iso reactions, which could be lumped in 16 reaction clusters, sets of reactions encoded by the same gene(s). We tested whether the preferential inclusion of an isoenzyme in certain model could be attributed to the cancer type or presence of mutations in 9 key cancer-associated genes, which were featured in the linear model (1), using a likelihood ratio test. After adjustment for multiple testing (Benjamini et al., 2001), an association was considered significant if the false discovery rate (FDR) < 0.001. The most recurrent gene-reaction association present in models belonging to a certain cancer type was chosen as the most likely isoenzyme to carry out the core-iso reaction in that cancer type.

We tested if the preferential inclusion of a contextual reaction in a certain model could be attributed to the cancer type or presence of mutations in 9 key cancer-associated genes, using a likelihood ratio test. Since 94.6% of contextual reactions showed an association with cancer type, we sought to reduce the complexity by deriving clusters of cancer types where a contextual reaction is included more or less frequently than expected. We performed consensus clustering on a  $l \times c$  matrix, where  $c$  is the number of cancer types (13) and  $l$  is the number of contextual reactions (3,269), and each matrix cell is the fraction of models derived from samples of the corresponding cancer type containing the corresponding contextual reaction. The optimal number of cluster  $w = 4$  was selected based on the observation that for  $w > 4$  the relative change in the area-under-CDF-curve was < 0.1, where CDF stands for the empirical cumulative distribution function of consensus distributions for up to  $w$  clusters. Consensus clustering was implemented using *ConsensusClusterPlus* R-package (Wilkerson and Hayes, 2010). The 49 contextual reactions most representative of the four clusters were chosen based on variable selection procedure applied to a random forest classifier constructed to assign a model to either of the four consensus clusters based on inclusion of contextual reactions. Random forest-driven variable selection was implemented using the *varSelRF* R-package (Diaz-Uriarte, 2007).

**Validation of cancer type cluster-dependency of contextual reactions.** Gene expression profiles for 4462 primary tumor samples from the same 13 cancer types (sample size per type: 94 to 978) were retrieved from TCGA and transformed to size-adjusted log-cpm as described above. The profiles were randomly split in a training and test set so that 50% of samples belonging to a certain cancer type cluster were included in each set. A random forest classifier was constructed on the expression level in the training set of 66 genes, selected because associated with the 49 contextual reactions most representatives of the different clusters (see above). The performance in the classification of samples in the test set to the 4 cancer type clusters based on the 66 gene expression signature was evaluated by calculating the multiclass AUC (Hand and Till, 2001). The same procedure was repeated for 1000 random 66 gene expression signatures. The random forest classification was implemented using the *RandomForest* R-package (Breiman, 2001). Differential gene expression analysis for the 66 gene expression signature was performed. Samples belonging to the brain tumor cluster because not enough tumor-adjacent normal samples were found to match these cancer types in TCGA. We retrieved 438 normal samples from TCGA that matched the remaining cancer types. We evaluated differential gene expression between tumor vs. normal samples belonging to the same cluster, between tumor samples belonging to different clusters, and between normal samples belonging to different clusters. After adjustment for multiple testing, a gene was considered differentially expressed between groups if FDR < 0.001. The differential gene expression analysis was implemented using the *voom* and *limma* R-packages (Law et al., 2014; Smyth, 2004).

## Acknowledgments:

The authors wish to thank Leif Våremo for his contributions on the reaction classification, and Avlant Nilsson, Benjamín José Sánchez, and Michael Gossing for a critical review of the manuscript. The computations were performed on resources provided by the Swedish National Infrastructure for Computing (SNIC) at C3SE. Knut and Alice Wallenberg Foundation is acknowledged for financing this work.

## Appendix A. Supplementary data

Supplementary data to this article can be found online at <https://doi.org/10.1016/j.ymben.2019.09.006>.

## References

- Agren, R., Bordel, S., Mardinoglu, A., Pornputtapong, N., Nookaew, I., Nielsen, J., 2012 May 17. Reconstruction of genome-scale active metabolic networks for 69 human cell types and 16 cancer types using INIT. *PLoS Comput. Biol.* 8 (5) e1002518.
- Agren, R., Mardinoglu, A., Asplund, A., Kampf, C., Uhlen, M., Nielsen, J., 2014 Mar 1. Identification of anticancer drugs for hepatocellular carcinoma through personalized genome-scale metabolic modeling. *Mol. Syst. Biol.* 10 (3), 721.
- Aspuria, P.J., Lunt, S.Y., Våremo, L., Vergnes, L., Gozo, M., Beach, J.A., Salumbides, B., Reue, K., Wiedemeyer, W.R., Nielsen, J., Karlan, B.Y., 2014 Dec. Succinate dehydrogenase inhibition leads to epithelial-mesenchymal transition and reprogrammed carbon metabolism. *Cancer Metabol.* 2 (1), 21.
- Bansal, V., Ochoa, J.B., 2003 Mar 1. Arginine availability, arginase, and the immune response. *Curr. Opin. Clin. Nutr. Metab. Care* 6 (2), 223–228.
- Barabasi, A.L., Oltvai, Z.N., 2004 Feb. Network biology: understanding the cell's functional organization. *Nat. Rev. Genet.* 5 (2), 101.
- Benjamini, Y., Drai, D., Elmer, G., Kafkafi, N., Golani, I., 2001 Nov 8. Controlling the false discovery rate in behavior genetics research. *Behav. Brain Res.* 125 (1–2), 279–284.
- Björnson, E., Mukhopadhyay, B., Asplund, A., Pristovsek, N., Cinar, R., Romeo, S., Uhlen, M., Kunos, G., Nielsen, J., Mardinoglu, A., 2015 Dec 1. Stratification of hepatocellular carcinoma patients based on acetate utilization. *Cell Rep.* 13 (9), 2014–2026.
- Boroughs, L.K., DeBerardinis, R.J., 2015 Apr. Metabolic pathways promoting cancer cell survival and growth. *Nat. Cell Biol.* 17 (4), 351.
- Breiman, L., 2001 Oct 1. Random forests. *Mach. Learn.* 45 (1), 5–32.
- Cairns, R.A., Harris, I.S., Mak, T.W., 2011. Regulation of cancer cell metabolism. *Nat. Rev. Cancer* 11 (2), 85.
- Damiani, C., et al., 2017. A metabolic core model elucidates how enhanced utilization of glucose and glutamine, with enhanced glutamine-dependent lactate production, promotes cancer cell growth: The Warburq effect. *PLoS Comput. Biol.* 13 (9). <https://doi.org/10.1371/journal.pcbi.1005758>. e1005758.
- DeBerardinis, R.J., Chandel, N.S., 2016 May 1. Fundamentals of cancer metabolism. *Science advances* 2 (5), e1600200.
- Diaz-Uriarte, R., 2007 Dec. GeneSrf and varSelRF: a web-based tool and R package for gene selection and classification using random forest. *BMC Bioinform.* 8 (1), 328.
- Dray, S., Dufour, A.B., 2007 Jan. The ade4 package: implementing the duality diagram for ecologists. *J. Stat. Softw.* 22 (4), 1–20.
- Dutkowskij, J., Kramer, M., Surma, M.A., Balakrishnan, R., Cherry, J.M., Krogan, N.J., Ideker, T., 2013 Jan. A gene ontology inferred from molecular networks. *Nat. Biotechnol.* 31 (1), 38.
- Gatto, F., Miess, H., Schulze, A., Nielsen, J., 2015 Jun 4. Flux balance analysis predicts essential genes in clear cell renal cell carcinoma metabolism. *Sci. Rep.* 5, 10738.
- Gatto, F., Nielsen, J., 2016 Jan. In search for symmetries in the metabolism of cancer. *Wiley Interdisciplinary Reviews: Systems Biology and Medicine* 8 (1), 23–35.
- Gatto, F., Nookaew, I., Nielsen, J., 2014 Feb 17. Chromosome 3p loss of heterozygosity is associated with a unique metabolic network in clear cell renal carcinoma. *Proc. Natl. Acad. Sci.* 201319196.
- Gatto, F., Schulze, A., Nielsen, J., 2016 Jul 19. Systematic analysis reveals that cancer mutations converge on deregulated metabolism of arachidonate and xenobiotics. *Cell Rep.* 16 (3), 878–895.
- Ghaffari, P., Mardinoglu, A., Asplund, A., Shoaie, S., Kampf, C., Uhlen, M., Nielsen, J., 2015 Feb 2. Identifying anti-growth factors for human cancer cell lines through genome-scale metabolic modeling. *Sci. Rep.* 5, 8183.
- Ghesquiere, B., Wong, B.W., Kuchnio, A., Carmeliet, P., 2014 Jul. Metabolism of stromal and immune cells in health and disease. *Nature* 511 (7508), 167.
- Hand, D.J., Till, R.J., 2001 Nov 1. A simple generalisation of the area under the ROC curve for multiple class classification problems. *Mach. Learn.* 45 (2), 171–186.
- Hensley, C.T., Faubert, B., Yuan, Q., Lev-Cohain, N., Jin, E., Kim, J., Jiang, L., Ko, B., Skelton, R., Loudat, L., Wodzak, M., 2016 Feb 11. Metabolic heterogeneity in human lung tumors. *Cell* 164 (4), 681–694.
- Hu, J., Locasale, J.W., Bielas, J.H., O'sullivan, J., Sheahan, K., Cantley, L.C., Vander Heiden, M.G., Vitkup, D., 2013 Jun. Heterogeneity of tumor-induced gene expression changes in the human metabolic network. *Nat. Biotechnol.* 31 (6), 522.
- Hu, W., Zhang, C., Wu, R., Sun, Y., Levine, A., Feng, Z., 2010 Apr 20. Glutaminase 2, a novel p53 target gene regulating energy metabolism and antioxidant function. *Proc. Natl. Acad. Sci.* 107 (16), 7455–7460.
- Law, C.W., Chen, Y., Shi, W., Smyth, G.K., 2014 Feb. voom: precision weights unlock linear model analysis tools for RNA-seq read counts. *Genome Biol.* 15 (2), R29.

- Li, H., Meininger, C.J., Kelly, K.A., Hawker Jr., J.R., Morris Jr., S.M., Wu, G., 2002 Jan 1. Activities of arginase I and II are limiting for endothelial cell proliferation. *Am. J. Physiol. Regul. Integr. Comp. Physiol.* 282 (1), R64–R69.
- Luengo, A., Gui, D.Y., Vander Heiden, M.G., 2017 Sep 21. Targeting metabolism for cancer therapy. *Cell chemical biology* 24 (9), 1161–1180.
- Mardinoglu, A., Agren, R., Kampf, C., Asplund, A., Uhlen, M., Nielsen, J., 2014 Jan 14. Genome-scale metabolic modelling of hepatocytes reveals serine deficiency in patients with non-alcoholic fatty liver disease. *Nat. Commun.* 5, 3083.
- Mardinoglu, A., Gatto, F., Nielsen, J., 2013 Sep 1. Genome-scale modeling of human metabolism—a systems biology approach. *Biotechnol. J.* 8 (9), 985–996.
- Mardinoglu, A., Nielsen, J., 2015 Aug 31. New paradigms for metabolic modeling of human cells. *Curr. Opin. Biotechnol.* 34, 91–97.
- Meacham, C.E., Morrison, S.J., 2013 Sep. Tumour heterogeneity and cancer cell plasticity. *Nature* 501 (7467), 328.
- Monk, J., Nogales, J., Palsson, B.O., 2014 May. Optimizing genome-scale network reconstructions. *Nat. Biotechnol.* 32 (5), 447.
- Nebert, D.W., Dalton, T.P., 2006. The role of cytochrome P450 enzymes in endogenous signalling pathways and environmental carcinogenesis. *Nature review cancer* (6), 947–960.
- Nilsson, R., Jain, M., Madhusudhan, N., Sheppard, N.G., Strittmatter, L., Kampf, C., Huang, J., Asplund, A., Mootha, V.K., 2014 Jan 23. Metabolic enzyme expression highlights a key role for MTHFD2 and the mitochondrial folate pathway in cancer. *Nat. Commun.* 5, 3128.
- O'Brien, E.J., Monk, J.M., Palsson, B.O., 2015 May 21. Using genome-scale models to predict biological capabilities. *Cell* 161 (5), 971–987.
- Pavlova, N.N., Thompson, C.B., 2016 Jan 12. The emerging hallmarks of cancer metabolism. *Cell Metabol.* 23 (1), 27–47.
- Peng, X., Chen, Z., Farshidfar, F., Xu, X., Lorenzi, P.L., Wang, Y., Cheng, F., Tan, L., Mojumdar, K., Du, D., Ge, Z., 2018 Apr 3. Molecular characterization and clinical relevance of metabolic expression subtypes in human cancers. *Cell Rep.* 23 (1), 255–269.
- Robinson, M.D., McCarthy, D.J., Smyth, G.K., 2010 Jan 1. edgeR: a Bioconductor package for differential expression analysis of digital gene expression data. *Bioinformatics* 26 (1), 139–140.
- Schultz, A., Qutub, A.A., 2016 Mar 4. Reconstruction of tissue-specific metabolic networks using CORDA. *PLoS Comput. Biol.* 12 (3) e1004808.
- Smyth, G.K., 2004 Feb 12. Linear models and empirical bayes methods for assessing differential expression in microarray experiments. *Stat. Appl. Genet. Mol. Biol.* 3 (1), 1–25.
- Uhlén, M., Fagerberg, L., Hallström, B.M., Lindskog, C., Oksvold, P., Mardinoglu, A., Sivertsson, Å., Kampf, C., Sjöstedt, E., Asplund, A., Olsson, I., 2015 Jan 23. Tissue-based map of the human proteome. *Science* 347 (6220), 1260419.
- Vlassis, N., Pacheco, M.P., Sauter, T., 2014 Jan 16. Fast reconstruction of compact context-specific metabolic network models. *PLoS Comput. Biol.* 10 (1) e1003424.
- Wang, D., DuBois, R.N., 2010 Mar. Eicosanoids and cancer. *Nat. Rev. Cancer* 10 (3), 181.
- Wang, Y., Eddy, J.A., Price, N.D., 2012 Dec. Reconstruction of genome-scale metabolic models for 126 human tissues using mCADRE. *BMC Syst. Biol.* 6 (1), 153.
- Wilkerson, M.D., Hayes, D.N., 2010 Apr 28. ConsensusClusterPlus: a class discovery tool with confidence assessments and item tracking. *Bioinformatics* 26 (12), 1572–1573.
- Yamada, T., Letunic, I., Okuda, S., Kanehisa, M., Bork, P., 2011 May 5. iPath2.0: interactive pathway explorer. *Nucleic Acids Res.* 39 (Suppl. 1\_2), W412–W415.
- Yizhak, K., Chaneton, B., Gottlieb, E., Ruppén, E., 2015 Jun 1. Modeling cancer metabolism on a genome scale. *Mol. Syst. Biol.* 11 (6), 817.
- Yizhak, K., Gaude, E., Le Dévédec, S., Waldman, Y.Y., Stein, G.Y., van de Water, B., Frezza, C., Ruppén, E., 2014a. Phenotype-based cell-specific metabolic modeling reveals metabolic liabilities of cancer. *Nov 21. Elife* 3 e03641.
- Yizhak, K., Le Dévédec, S.E., Rogkoti, V.M., Baenke, F., de Boer, V.C., Frezza, C., Schulze, A., van de Water, B., Ruppén, E., 2014b. A computational study of the Warburg effect identifies metabolic targets inhibiting cancer migration. *Mol. Syst. Biol.* 10 (8), 744.
- Yuneva, M.O., Fan, T.W., Allen, T.D., Higashi, R.M., Ferraris, D.V., Tsukamoto, T., Matés, J.M., Alonso, F.J., Wang, C., Seo, Y., Chen, X., 2012 Feb 8. The metabolic profile of tumors depends on both the responsible genetic lesion and tissue type. *Cell Metabol.* 15 (2), 157–170.
- Zielinski, D.C., Jamshidi, N., Corbett, A.J., Bordbar, A., Thomas, A., Palsson, B.O., 2017 Jan 25. Systems biology analysis of drivers underlying hallmarks of cancer cell metabolism. *Sci. Rep.* 7, 41241.