



Physics of the laser-plasma interface in the relativistic regime of interaction

Downloaded from: <https://research.chalmers.se>, 2026-04-05 01:33 UTC

Citation for the original published paper (version of record):

Svedung Wettervik, B., Marklund, M., Gonoskov, A. (2019). Physics of the laser-plasma interface in the relativistic regime of interaction. *Physics of Plasmas*, 26(5). <http://dx.doi.org/10.1063/1.5088870>

N.B. When citing this work, cite the original published paper.

Physics of the laser-plasma interface in the relativistic regime of interaction

Cite as: Phys. Plasmas **26**, 053101 (2019); <https://doi.org/10.1063/1.5088870>

Submitted: 15 January 2019 . Accepted: 14 April 2019 . Published Online: 07 May 2019

B. Svedung Wettervik, M. Marklund, and A. Gonoskov 



View Online



Export Citation



CrossMark

ARTICLES YOU MAY BE INTERESTED IN

[Are we ready to transfer optical light to gamma-rays?](#)

Physics of Plasmas **26**, 053103 (2019); <https://doi.org/10.1063/1.5090992>

[Relativistic laser driven electron accelerator using micro-channel plasma targets](#)

Physics of Plasmas **26**, 033110 (2019); <https://doi.org/10.1063/1.5087409>

[On the generalized formulation of Debye shielding in plasmas](#)

Physics of Plasmas **26**, 050701 (2019); <https://doi.org/10.1063/1.5091949>



ULVAC

Leading the World with Vacuum Technology

- Vacuum Pumps
- Arc Plasma Deposition
- RGAs
- Leak Detectors
- Thermal Analysis
- Ellipsometers



Physics of the laser-plasma interface in the relativistic regime of interaction

Cite as: Phys. Plasmas **26**, 053101 (2019); doi: [10.1063/1.5088870](https://doi.org/10.1063/1.5088870)

Submitted: 15 January 2019 · Accepted: 14 April 2019 ·

Published Online: 7 May 2019



View Online



Export Citation



CrossMark

B. Svedung Wettervik,¹ M. Marklund,¹ and A. Gonoskov^{1,2,3} 

AFFILIATIONS

¹Department of Physics, Chalmers University of Technology, Göteborg 41296, Sweden

²Institute of Applied Physics, Russian Academy of Sciences, Nizhny Novgorod 603950, Russia

³Lobachevsky State University of Nizhni Novgorod, Nizhny Novgorod 603950, Russia

ABSTRACT

The reflection of intense laser radiation from solids appears as a result of relativistic dynamics of the electrons driven by both incoming and self-generated electromagnetic fields at the periphery of the emerging dense plasma. In the case of highly relativistic motion, electrons tend to form a thin oscillating layer, which makes it possible to model the interaction and obtain the temporal structure of the reflected radiation. The modeling reveals the possibility and conditions for producing singularly intense and short extreme ultraviolet (XUV) bursts of radiation, which are interesting for many applications. However, the intensity and duration of the XUV bursts, as well as the high-energy end of the harmonic spectrum, depend on the thickness of the layer and its internal structure which are not assessed by such macroscopic modeling. Here, we analyze the microscopic physics of this layer and clarify how its parameters are bound and how this controls the outlined properties of XUV bursts.

Published under license by AIP Publishing. <https://doi.org/10.1063/1.5088870>

I. INTRODUCTION

The interaction of intense radiation with overdense plasmas in the relativistic regime appears as the basic problem for many promising applications of high-intensity lasers, ranging from particle acceleration^{1,2} to the generation of high frequency radiation,^{3–6} with practical applications within diagnostics, probing of warm dense matter, and observing phenomena at the atto-second time-scale.^{7–9}

If the transverse size of the laser pulse is much larger than the wavelength and the irradiated plasma is sufficiently dense to prevent the penetration of radiation, the reflection of an obliquely incident laser pulse can be considered as a one-dimensional problem in a reference frame moving along the plasma surface with speed $c \sin \theta$, where c is the speed of light and θ is the angle of incidence.¹⁰ In this reference frame, the laser radiation impinges normally on the plasma streaming with the speed $c \sin \theta$.

The character of the laser-plasma interaction depends crucially on the conditions of interaction. In the case of low intensity and a sharp density profile, the plasma still acts as an almost ideal mirror, but with small fractions of frontier electrons that are repeatedly thrown into the plasma resulting in heating.^{11–16} In the case of a limited density gradient, typically provided by limited contrast of the laser pulse, the electron bunches thrown into the density ramp can excite plasma oscillations, which produce emission of high-frequency

radiation in the specular direction. This mechanism, known as coherent wake emission (CWE),⁵ is dominant for moderate intensities, characterized by that the field amplitude $a_0 \ll 1$, where the amplitude is given in relativistic units mc/e and ω is the radiation frequency, and m and e are the electron mass and charge (absolute value).

For higher intensities, the light pressure and especially its temporal variation start to affect the reflection from the plasma yielding a distinctively different mechanism for high order harmonic generation (HHG). One way of modeling this is based on the assumption that at any instance of time, there exists a point where the incoming and outgoing energy fluxes are equal, and this point oscillates approaching relativistic speed just as an ordinary particle. Although this model is referred to as the relativistic oscillating mirror (ROM),¹⁷ this is a mirror in a limited sense: It provides phase modulations but no amplitude boosts as a real mirror would do. While this might look unnatural, this interpretation leads to the universal law for harmonic intensity decay $I_k \sim k^{-8/3}$, where k is the wavenumber, which has been observed in some simulations¹⁸ and experiments^{19,20} (some other trends have also been discussed in the literature^{21–24}). Note that the assumed equality of the incoming and outgoing fluxes, known as the Leontovich boundary condition, implies that the plasma does not accumulate energy even temporarily.

If the intensity is even higher and/or the plasma edge is sufficiently smooth, the oscillating light pressure repeatedly causes

significant back and forth shifts of the plasma front.^{25,26} During these shifts, a significant part of incoming radiation energy can become temporally allocated in the quasi-static field of charge separation between the shifted electrons and less mobile residual ions. In this case, the plasma acts more like a spring, repeatedly accumulating and releasing energy from the incident radiation. Simulations of this process show that electrons tend to form a bunch and thus provide coherent synchrotron emission (CSE).⁵ It is notable that the bunch is compressed during both forward and backward motion due to relativistic effects and, in the case of high intensities, maintains a thickness that is much smaller than the distance over which it travels.²⁷ This motivates modeling the interaction process based on treating this bunch as an infinitely thin layer that moves so that its radiation cancels out the incoming radiation into the plasma bulk. This model is referred to as the relativistic electronic spring (RES)²⁸ and provides the temporal structure of the outgoing radiation for an arbitrary incident radiation structure and polarization as well as for arbitrary plasma density shapes.²⁷ Although challenging, some signatures of electron bunching and relativistic dynamics have already been observed in experiments.^{29–31}

The analysis of the RES equations indicates that at certain parameters, the outgoing radiation appears in the form of singularly intense and short bursts of radiation. Simulations have shown that these bursts can have more than two orders of magnitude higher intensity than that of the incident radiation and a duration of down to a few attoseconds.^{28,32,33} One way to reach even more extreme intensities is by focusing such bursts generated from self-generated³⁴ or manufactured^{35,36} spherical or groove-shaped²⁸ plasma mirrors. Furthermore, recently discussed applications are related to the creation of compact sources of bright extreme ultraviolet (XUV) pulses^{37–40} with controllable ellipticity⁴¹ and of bright gamma rays⁴² emitted by the electrons in

this regime of interaction. Since the generated XUV bursts can reach relativistic intensities for the XUV range of frequencies,⁴³ they can also be used for driving wakefields in solids.^{44,45}

For the RES theory, the described bursts of radiation appear as singularities and their actual peak intensity, duration, and the high-energy end of the spectrum are not assessed by the theory. These characteristics are limited by the thickness of the layer. Simulations show that, in contrast to the layer dynamics, the thickness of the layer does not follow the relativistic similarity⁴⁶ with parameter $S = n/a_0$, where n is the plasma density in units of critical density $n_c = m\omega^2/4\pi e^2$. This indicates that assessing the thickness requires analysis based on the first principles.

The RES model is motivated by the spread in electron velocities in the sheath being small, which is an effect of the relativistic dynamics. However, as the velocities of the electrons are close to the speed of light, small fluctuations in velocity imply large fluctuations in the corresponding γ -factor. One may hence ask what happens to the similarity normalized γ -factor γ/a_0 in the high a_0 -limit, a question that is also connected to the layer thickness Δx and normalized energy W/a_0^2 of the electrons in the sheath. Figure 1 shows the similarity normalized maximum γ -factor in the layer, the energy W/a_0^2 , and the thickness Δx of the sheath as a function of time, obtained from particle-in-cell (PIC) simulations, for a range of different a_0 . From this, a decreasing trend can be observed for all three quantities as a_0 increases. It is not clear whether they approach a nonzero limit or converge to zero. The latter case would indicate that the efficiency of energy conversion from the laser to the electrons in the sheath becomes smaller for high a_0 (even if the maximum γ -factor may increase with a_0 in absolute numbers). The amount of energy in the compressed sheath of electrons, as well as its distribution, is relevant to address questions about the

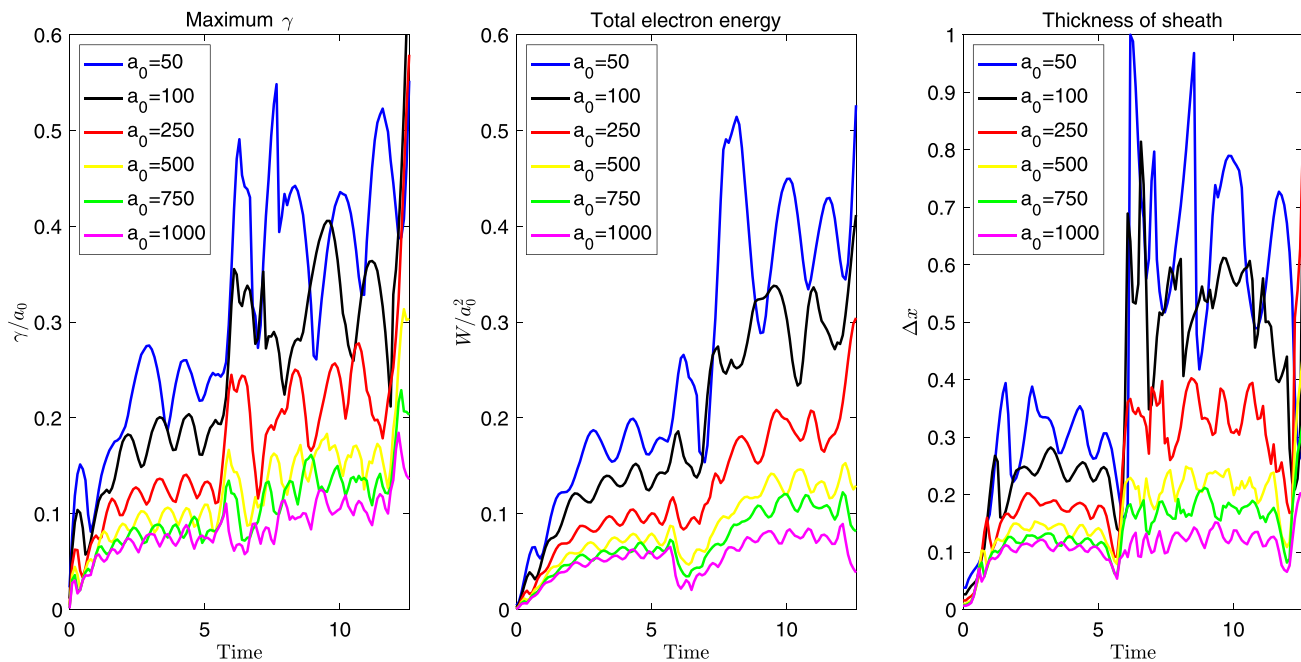


FIG. 1. Left: Maximum γ as a function of time for setup with $S = 1/\cos^3\theta$ and angle of incidence $\theta = \pi/7$, and different a_0 . Middle: Total energy of electrons in sheath as a function of time. Right: Thickness of sheath as a function of time. The similarity normalized quantities γ/a_0 , W/a_0^2 , Δx decrease as $a_0 \rightarrow \infty$.

radiation spectrum for high-harmonic generation and electron heating. Resolving the γ -factor distribution for electrons in the sheath is therefore of great interest. In previous studies, an average value of 10 has been proposed to be used as an *ad hoc* value for limiting the singularity of the RES equations in Refs. 28 and 47. Serebryakov *et al.*⁴² have also proposed to model the average γ -factor in the sheath by solving the equations of motion for an average particle in the sheath. However, such a model is limited by the fact that particles are continuously added and removed from the sheath, leading to difficulties in connecting single-particle dynamics to that of the sheath.

In this paper, we show that the relation between the transverse momentum and vector potential can be used to express the distribution (as well as average) of the electron γ -factors in terms of the thickness of the sheath and the parameters from the RES-model. However, the layer thickness and its dependency on a_0 still need to be determined. One way to do this is to integrate the rate of change of γ for an electron at the vacuum-plasma boundary. This is highly complicated and demands accurate models for the fields at the vacuum-plasma boundary, incorporating effects due to finite γ -factors and variations in velocities across the sheath to give a non-vanishing rate of change. Instead, we will here combine estimates for the layer thickness from analytical solutions with the results of particle-in-cell simulations. The analytical estimates are based on the balance between the radiation pressure and the longitudinal electric field. Furthermore, we address the similarity limit of the layer dynamics, as well as scaling laws for the cut-off frequency for high harmonic generation.

This paper is structured as follows: In Secs. II and III, we introduce notation as well as the governing equations in the RES-model. This is followed by Secs. IV and V, where we derive the field-structure and γ -distribution inside the electron sheath. The derived expressions are compared with the results of simulations. Thereafter, Sec. VI considers the a_0 dependence of the layer thickness and addresses scalings for the cut-off frequency for high-harmonics based on coherency-limits and energy conservation. Finally, in Sec. VII, we summarize our findings and elaborate on possible extensions to obtain a fully analytical model for the electron and radiation spectrum, as well as discuss possible applications.

II. SETUP AND UNITS

The RES-model can be applied for arbitrary angles of incidence, density profiles, pulse-shapes, polarization, and relativistic intensities.²⁸ However, here, we consider an incoming laser pulse of the form $\vec{E}(\psi) = E_{y,i}(\psi)\hat{y} + E_{z,i}(\psi)\hat{z}$, where $\psi = \omega t - kx$ is a phase coordinate and $E_{y,i}(\psi)$, $E_{z,i}(\psi)$ are arbitrary functions of phase, interacting with a step-like plasma density profile $n(x) = n_0\Theta(x)$, where $\Theta(x)$ is a step-function and n_0 is the plasma density, i.e., a plasma with its vacuum-plasma boundary initially located at $x = 0$. This can be related to the more realistic situation with a smooth density profile by using the notion of an effective S -number proposed in Ref. 43. We assume that the pulse is incident with an angle θ with respect to the x -axis in the plane normal to \hat{z} . By performing a Lorentz-transformation in the $\vec{v} = -c \sin \theta \hat{y}$ direction, the setup reduces to that of normal incidence. However, in the boosted frame, the electrons and ions are moving with an initial velocity.

In the following, time and space are expressed in terms of $x' = kx$ and $t' = \omega t$, where k is the wave-vector of the incident radiation and ω is its frequency. Furthermore, densities are expressed in terms

of n_c , momentum is expressed in terms of mc , and fields are expressed in terms of the relativistic field $E_r = mc\omega/e$, with the relativistic amplitude defined by $a_0 = E_{\max}/E_r$, where E_{\max} is the maximum amplitude of the incoming field. Normalizations are, unless otherwise stated, performed with respect to the boosted frame.

III. THE RELATIVISTIC ELECTRON SPRING (RES) MODEL-GOVERNING EQUATIONS

The RES-model relies on that the incident radiation will not propagate inside the plasma, i.e., only penetrates the vacuum-plasma boundary to a limited extent, eventually being canceled by fields due to plasma-currents, in combination with $a_0 > 1$, which makes the electron-dynamics relativistic. Under these circumstances, the electrons form a sheath, moving with velocity $\vec{\beta} = (\beta_x, \beta_y, \beta_z)$, which is approximately positioned at the point of full cancellation of the incident field: x_s . This criterion can with respect to the boosted frame be expressed in terms of

$$E_{y,i}(x_s - t) + \frac{Q}{2} \left(\sin \theta - \frac{\beta_y}{1 - \beta_x} \right) = 0, \quad (1)$$

$$E_{z,i}(x_s - t) - \frac{Q}{2} \frac{\beta_z}{1 - \beta_x} = 0, \quad (2)$$

where $Q = n_0 x_s$ is the total charge in the sheath. Since the dynamics is relativistic, it is assumed that the layer moves at the speed of light, i.e., $\beta_x^2 + \beta_y^2 + \beta_z^2 = 1$, resulting in three equations for the four unknowns x_s and $\vec{\beta}$. The system of equations is closed by adding an equation of motion for x_s

$$\frac{dx_s}{dt} = \beta_x. \quad (3)$$

The fact that these equations capture the physics of interaction in the high a_0 limit is demonstrated in Fig. 2. In this Figure, we compare the solution of the equations in the RES-model and PIC-simulations for the velocities $\vec{\beta}$, as well as the magnetic fields at the vacuum-plasma interface in the particular case of $\theta = \pi/7$, $S = 1/\cos^3 \theta$, and $E_y(\psi) = \Theta(\psi)a_0(\cos \zeta \sin \psi \hat{y} + \sin \zeta \cos \psi \hat{z})$ with $a_0 = 1000$ and $\zeta = \pi/3$, with respect to the boosted frame. The PIC-simulations were performed using the ELMIS-code,⁴⁸ with the spatial resolution $\Delta x = 3.8 \times 10^{-4}$, temporal resolution $\Delta t = 7 \times 10^{-4}$, and 25 particles per cell.

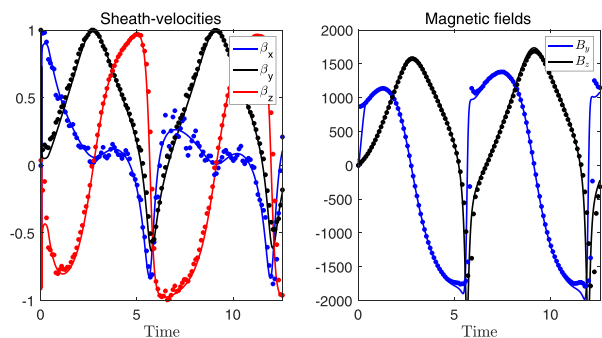


FIG. 2. Left: Comparison of sheath-velocities from the RES-model (lines) and PIC-simulations (dots). Right: Comparison of the magnetic field component at the vacuum-plasma interface from the RES-model (lines) and PIC-simulations (dots).

IV. FIELDS INSIDE THE COMPRESSED ELECTRON SHEATH

Figure 3 schematically illustrates a compressed sheath with velocities $\vec{\beta} = (\beta_x, \beta_y, \beta_z)$ and thickness Δx , resulting from the interaction between a laser and a plasma. The position x_s , in the RES-model, is associated with the right-most point of the sheath, whereas $x_s - \Delta x$ corresponds to the vacuum-plasma interface. The electromagnetic field at a point $x \in [x_s - \Delta x, x_s]$, i.e., inside the sheath, has four contributions: The incident field from the laser, the field from the unshielded ion current, and the forward as well as backward traveling radiation from electrons inside the sheath. By using the RES-condition and summing all the contributions, a lowest order approximation to the fields at a point x inside the sheath is given by

$$E_x = -(Q - q), \tag{4}$$

$$E_y = (Q - q) \frac{\beta_x \beta_y}{1 - \beta_x^2}, \tag{5}$$

$$B_y = -(Q - q) \frac{\beta_z}{1 - \beta_x^2}, \tag{6}$$

$$E_z = (Q - q) \frac{\beta_x \beta_z}{1 - \beta_x^2}, \tag{7}$$

$$B_z = (Q - q) \frac{\beta_y}{1 - \beta_x^2}, \tag{8}$$

where q is the amount of electron charge between the vacuum-plasma interface and x .

The above expressions are used in Sec. V to calculate the shape of the γ -factor distribution for electrons. However, to obtain a closed expression for the γ -distribution in the layer, it is necessary to determine either the energy in the layer, its thickness or the maximum γ -factor (the γ -factor of a particle at the vacuum plasma interface), which poses a significant challenge. In particular, with the above field expressions, both the energy-flow across the vacuum plasma boundary and the rate of change of γ (i.e., $\vec{\beta} \cdot \vec{E}$) vanish. The vanishing of energy flow across the vacuum-plasma boundary in the crude approximation

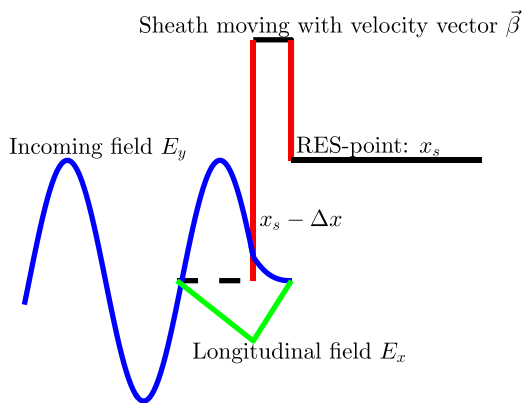


FIG. 3. In the boosted frame, a laser pulse is incoming at a sharp plasma-boundary leading to the formation of a thin sheath with velocity $\vec{\beta}$. Whereas the incoming radiation is canceled by the $Q = n_0 x_s$ electrons in the sheath, the longitudinal electric field peaks at the vacuum-plasma interface and is due to the unshielded charge $Q = Q - n_0 \Delta x$ to the left of the interface, where Δx is the layer thickness.

of the fields does not rely on that the sheath velocity follows that in the RES-model, but holds in the broader context of that the sheath is described by some common velocity and moves at the speed of light. To account for energy accumulation in the sheath, it is instead necessary to consider more accurate models for the field structure, which may include the following:

1. The effect of the ions situated between $x_s - \Delta x$ and x_s on E_x .
2. The variation of the incoming field across the extension of the sheath.
3. The effect of finite γ -factors.
4. Retardation effects, in the evaluation of the field due to both electrons and ions.
5. Angular deviations of the particle velocities $\vec{\beta}(x)$ compared to the description of the sheath electrons moving with a single velocity.

These corrections play a varying role during different parts of the interaction. Finite γ -factors on the one hand directly affect the fields through the expressions for the field of an element of the sheath moving with a given velocity, but also indirectly as it determines the dynamics of the layer thickness, which broadly determines the importance of the other corrections. One may further notice that retardation plays a critical role in the emission of high-harmonics as this occurs simultaneously with the layer moving in the opposite \hat{x} -direction.

V. ESTIMATE FOR γ -DISTRIBUTION

In the following, we assume that the incoming laser pulse has infinite transverse extension. This excludes treatment of effects such as ponderomotive expulsion of electrons in the transverse direction as well as some aspects of electron heating. Although these effects are likely to be important in experiments using near-future tightly focused relativistic laser systems, we are here focused on revealing and clarifying one-dimensional aspects which should provide a constructive basis for the estimation of the multidimensional effects. Since, in the case of normal incidence of a laser pulse with an infinitely large focal spot size, the hamiltonian of the particles does not depend on the transverse coordinates, transverse canonical momentum is conserved. In the boosted frame, conservation of canonical momentum in the \hat{z} -direction is equivalent to

$$p_z = -A_z. \tag{9}$$

As $p_z = \gamma \beta_z$, provided that the vector-potential component A_z , expressed in units of mc^2/e , can be calculated, γ is obtained by taking β_z from the RES-model. Clearly, such an expression is valid as long as the electron dynamics is relativistic and the RES-velocity accurately describes the electron dynamics (which commonly is the case, except for when the transverse velocity is close to zero).

To calculate the vector-potential, observe that $B_y = -\partial A_z / \partial x$ and consequently that

$$A_z(x) = -\frac{\beta_z}{1 - \beta_x^2} \int_x^{x_s} (Q - q) dx. \tag{10}$$

This integral incorporates details related to the electron-density in the layer, which from an analytical perspective cannot be known in detail (although it may be calculated from simulations). As an approximation, we assume that the density is constant across the sheath, i.e., has some value $n = Q/\Delta x$. In that case

$$A_z(x) = -\Delta x Q \frac{\beta_z}{1 - \beta_x^2} \frac{\delta x^2}{2} \tag{11}$$

with $\delta x = (x_s - x)/\Delta x$ being the position in the sheath, normalized with the width of the sheath.

Combining the equation for the vector potential and conservation of canonical momentum gives the γ -factor distribution

$$\gamma = \frac{Q\Delta x}{1 - \beta_x^2} \frac{\delta x^2}{2}. \tag{12}$$

Although the analytical expression is not entirely independent of PIC-simulations, which were used to determine the thickness of the sheath, Fig. 4 indicates good consistency with the γ -factor distribution obtained from PIC-simulations.

By integrating the γ -factor distribution, the total electron energy in the sheath can be written as

$$W(t, S, a_0) = \frac{Q^2 \Delta x}{6(1 - \beta_x^2)}. \tag{13}$$

Evidently, the average γ -factor scales proportionally with $Q\Delta x$. The S -similarity theory implies that there is a normalized energy $W(t, S) = W(t, S, a_0)/a_0^2$, where $W(t, S)$ in the limit of high a_0 only depends on time and the S -parameter. In terms of $W(t, S)$, the γ -distribution takes the form

$$\gamma = 3a_0 W(t, S) \delta x^2 / Sx_s \tag{14}$$

which shows that the singular behavior of γ indicated by its dependency on β_x is constrained by the available energy $W(t, S)$ which is limited from above by the energy available in the laser pulse. In terms of normalized quantities, the thickness of the sheath

$$\Delta x = 6(1 - \beta_x^2) W(t, S) / S^2 x_s^2, \tag{15}$$

i.e., if $W(t, S)$ converges to a limit for high a_0 , the thickness of the sheath also converges and in particular goes to zero as the sheath moves along the axis of incidence. An estimate for the thickness in the intermediate region is given by

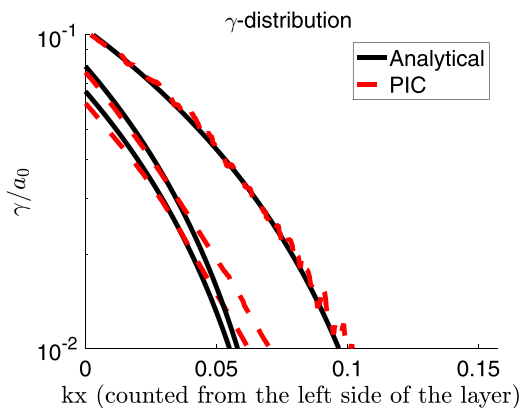


FIG. 4. Comparison of the γ -factor in the sheath calculated from PIC-simulations as well as from the γ -distribution in Sec. V, with the approximation of constant sheath-density with the thickness taken from simulations at times $t = 2.0, 4.9$, and 7.9 .

$$\Delta x = \frac{2}{3a_0^2 W(t, S)}, \tag{16}$$

where we have assumed that the velocities for the sheath can be associated with γ , which then is equated to the maximum γ in the sheath. However, notice that this expression is limited by the accuracy of the field-description at the point $\beta_x = -1$ and that the field at the singular point needs further consideration, which will be addressed in Sec. VI.

Figure 1 shows the comparison of the maximum γ , the energy of electrons in the sheath, and Δx for the laser-plasma interaction with $S = 1/\cos^3 \theta$, $\theta = \pi/7$, and different a_0 . Although γ , the energy, and Δx appear to change increasingly slowly with respect to similarity normalized units as a_0 increases, there is no clear indication whether they have a nonzero limit. To shed light on this, we consider the simplified problem of a circularly polarized plane wave interacting with an overdense plasma.⁴⁹ In this case, the balance between radiation pressure and the electrostatic force leads to a penetration depth of the vector-potential scaling as $\lambda_s \sim a_0^{-1/2}$, i.e., which goes to zero as a_0 increases. If this property generalizes to the case of arbitrary interaction parameters, it would mean that $W(t, S) = 0$ and consequently that energy-accumulation in the sheath is a transient phenomenon, which is only significant for low to moderate a_0 .

VI. SIMULATION OF THE LAYER THICKNESS AND PEAK FIELD AT SINGULAR POINT

The existence of a limit for the layer thickness (for high a_0) as the layer moves backward and radiates is important for the prospects of generating coherent high harmonics of increasingly high order. In view of the expression for the layer thickness in Sec. V, with a proportionality $\Delta x \sim (1 - \beta_x^2)$, higher a_0 implies a layer thickness approaching zero (as $1 - \beta_x^2 \sim 1/\gamma^2$), which is a consequence of that the field approaches infinity when $\beta_x \rightarrow -1$. However, this estimate may overestimate the decay rate by overestimating the field in the calculation of the vector potential, which is reduced due to retardation effects and potentially also affected by angular velocity spread for the electrons, which is conserved in the high a_0 -limit. In Fig. 5, the layer thickness as well as frequency cut-off for high-harmonic generation (defined in terms of a sharp drop in the spectrum) is shown as a function of a_0 in a case with linear polarization, $S = 1$ and $\theta = 0$, as well the case described in Sec. III. The layer thickness is measured at the point of maximum compression (i.e., where $\beta_x = 0$). The thickness in the two cases approximately decays as $a_0^{-0.4}$ and $a_0^{-0.3}$, respectively, which shows that the decay rate for the skin depth gives results that remain representative for a wider range of interaction parameters. For the linearly polarized case, the cut-off frequency for the generation of high harmonics scales as $a_0^{0.5}$, which is fairly consistent with the limit on coherency implied by $\sim 1/\Delta x$ and the scaling of the layer thickness. Additional simulations showed that a pre-plasma of scale-length $L \sim 0.1\lambda$, i.e., smaller than the penetration depth of the pulse, did not significantly alter the layer thickness or cut-off frequency. For longer pre-plasma, work by Blackburn *et al.*⁴³ shows that the laser-plasma interaction can be put in correspondence to interaction with a step-like plasma at a modified S -number.

In the following, we compare the restrictions on the cut-off frequency from the layer thickness to that implied by the accumulated energy in the sheath. An heuristic implication from the study of the scaling of the thickness is that the energy in the sheath scales as $W(t, S, a_0) \sim a_0^{2-\alpha}$, where α is such that $\Delta x \sim a_0^{-\alpha}$; introducing α to

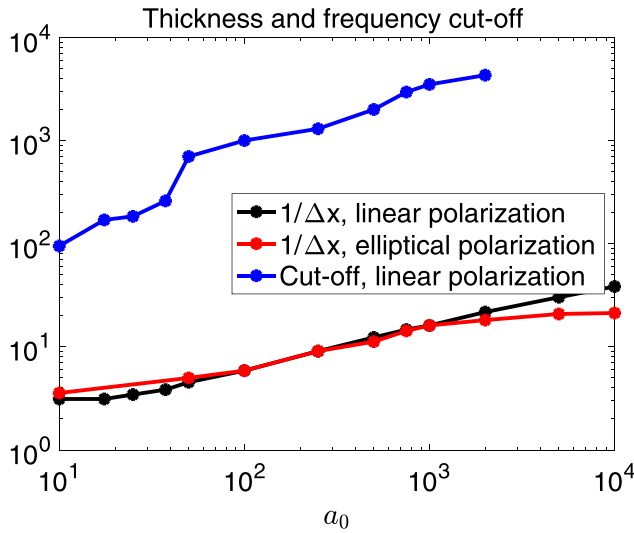


FIG. 5. The frequency cut-off for high-harmonic radiation and inverse thickness $1/\Delta x$ as a function of a_0 for the interaction of a linearly polarized laser at normal incidence with an $S=1$ plasma, as well as the case with $S=1/\cos^3\theta$, $\theta=\pi/7$ and pulse shape described in Sec. III.

take into account that the exponent (observed in simulations) is slightly different from 0.5 as suggested by taking the skin depth (see Sec. V) as an estimate for Δx . Assuming that the atto-second burst generated from the interaction can be described by an amplitude B and typical wavelength L : $LB^2 \sim a_0^{2-\alpha}$, which provides a different route to the scaling of the frequency for high harmonic generation. To find L , it is necessary to estimate the amplitude of the atto-second burst. Here, we take into account the velocity spread for electrons in the layer through a delay $\tilde{t}(q)$, dependent on the charge coordinate q , such that $\beta_x(t, q) = \rho\beta_x(t - \tilde{t}(q))$, where $\rho = \sqrt{1 - 1/\gamma^2}$ and $\tilde{t}(t)$ corresponds to a motion at the speed of light. To analyze the emission of high-frequency radiation, we consider the particle velocities in the vicinity of (t, q) such that $\beta_x(t, q) = -\rho$ (i.e., a time t is such that $t = t_e + \tilde{t}(q)$ and $\beta_x(t_e) = -1$)

$$\beta_x(t, q) = \rho \left(-1 + \frac{1}{2} \frac{\partial^2 \beta_x}{\partial t^2} (\delta t - u\delta x)^2 \right), \quad (17)$$

where $u = n\partial\tilde{t}/\partial q$ and $\delta t, \delta x$ are the deviations from the position and time defined by $t = t_e + \tilde{t}(q)$. For linear polarization (with non-zero electric field along the \hat{y} -axis), it then holds that

$$\beta_y(t, q) \sim \sqrt{\frac{\partial^2 \beta_x}{\partial t^2}} (\delta t - u\delta x). \quad (18)$$

We assume that the interaction parameters are such that the second-derivative is nonzero and the transverse velocity crosses zero. According to Gonoskov *et al.*,²⁸ the transverse velocity may also just touch zero, which actually turns out to result in optimal conditions ($\theta \approx \pi/3$, $S \approx 0.5$) for achieving a high amplitude and cut-off frequency for the emitted radiation. The interaction close to these conditions may be thought of as $\partial^2 \beta_x / \partial t^2$ being small. Based on the expressions for the velocities, the field contribution from an element of charge dq becomes

$$dB_z \sim \frac{\sqrt{\frac{\partial^2 \beta_x}{\partial t^2}} (\delta t - u\delta x)}{1 - \rho + \frac{1}{2} \frac{\partial^2 \beta_x}{\partial t^2} (\delta t - u\delta x)^2} dq. \quad (19)$$

Taking into account retardation amounts to setting $\delta x = -\delta t$ and the total field can be obtained by integration of all contributions. However, the integrand is anti-symmetric in δx and nonzero values of the field are hence a consequence of the position (characterized by q) for the zero-crossing of the transverse velocity (with the correct phase) as well as variations of γ across the layer. An upper estimate for the field can be obtained by only taking into account the contribution from the γ -factor resolved singular point when integrating with respect to the part of the sheath defined by $\delta x > 0$

$$B_z \sim \frac{n \log \gamma}{(1 + u) \sqrt{\frac{\partial^2 \beta_x}{\partial t^2}}}, \quad (20)$$

where we assume that the sheath can be associated with a single γ -factor. This expression is proportional to n , which as $n \sim Q/\Delta x \sim a_0^{1+\alpha}$, and from (12) $\log \gamma \sim (1 - \alpha) \log a_0$ to leading order in a_0 , shows that the field grows no faster than $a_0^{1+\alpha} \log a_0$. Combining this with the estimate for energy: $L \sim a_0^{-3\alpha} / (\log a_0)^2$, which translates into a frequency scaling $\tilde{\omega}/\omega \sim a_0^{3\alpha} (\log a_0)^2$, where $\tilde{\omega}$ is a typical frequency for the attosecond burst. Energy constraints hence allow a faster increase in the frequency with a_0 than the scaling of the layer thickness. The frequency of high harmonics may hence be anticipated to scale at this rate until it reaches high enough values for coherency to set limits and then following the slower scaling of $1/\Delta x$.

VII. CONCLUSIONS

Understanding the properties, e.g., frequency range, amplitude, and duration of high harmonics generated from the interaction of lasers with moderately overdense plasma, has been of great experimental as well as theoretical interest. The RES-model has in the past been shown to model the layer dynamics for the laser-plasma interaction in the near-critical regime, which is relevant to the generation of high harmonic radiation. However, to understand the details of the radiation spectrum, it is necessary to assess the electron spectrum and properties of the microdynamics in the sheath.

In this paper, we connected the γ -factor inside the electron layer to RES-parameters and the thickness of the electron sheath or, equivalently, in terms of the total energy of the sheath. However, it was observed that the energy-flow across the vacuum-plasma boundary vanished, unless field-effects of the order of the thickness of the layer were included. Such field effects include variations of the velocities across the sheath, retardation effects, and effects due to finite γ -factors for the electrons.

Finally, guided by analytical estimates and simulations, we found that the layer thickness Δx scales as $a_0^{-\alpha}$, where $\alpha \sim 0.5$. Based on these observations, two scalings for the cut-off frequency for high harmonics could be indicated: on the one hand, from limits due to energy constraints, and on the other hand, from incoherency ($\sim 1/\Delta x$). Such scalings are consistent with a faster growth of the cut-off frequency for small a_0 than at higher a_0 . To improve the accuracy of the analysis of the radiation generation, it is suggested to focus on a more in detail understanding of the scaling of the layer thickness with the relativistic

amplitude as well as effects of the microdynamics of the electron-sheath during emission of high harmonics.

ACKNOWLEDGMENTS

This research was supported by the Knut & Alice Wallenberg Foundation Grant Plasma based compact ion sources, and the Swedish Research Council (Grant Nos. 2016-03329 and 2017-05148). The simulations were performed on resources provided by the Swedish National Infrastructure for Computing (SNIC) at High Performance Computing Center North (HPC2N).

REFERENCES

- ¹H. Daido, M. Nishiuchi, and A. S. Pirozhkov, *Rep. Prog. Phys.* **75**, 056401 (2012).
- ²V. Malka, J. Faure, Y. A. Gauduel, E. Lefebvre, A. Rousse, and K. T. Phuoc, *Nat. Phys.* **4**, 447 (2008).
- ³S. Corde, K. Ta Phuoc, G. Lambert, R. Fitour, V. Malka, A. Rousse, A. Beck, and E. Lefebvre, *Rev. Mod. Phys.* **85**, 1 (2013).
- ⁴A. Rousse, K. T. Phuoc, R. Shah, A. Pukhov, E. Lefebvre, V. Malka, S. Kiselev, F. Burgy, J.-P. Rousseau, D. Umstadter, and D. Hulin, *Phys. Rev. Lett.* **93**, 135005 (2004).
- ⁵F. Quéré, C. Thauray, P. Monot, S. Dobosz, P. Martin, J.-P. Geindre, and P. Audebert, *Phys. Rev. Lett.* **96**, 125004 (2006).
- ⁶A. Rousse, P. Audebert, J. P. Geindre, F. Fallières, J. C. Gauthier, A. Mysyrowicz, G. Grillon, and A. Antonetti, *Phys. Rev. E* **50**, 2200 (1994).
- ⁷S. Dobosz, G. Doumy, H. Stabile, P. D'Oliveira, P. Monot, F. Réau, S. Hüller, and P. Martin, *Phys. Rev. Lett.* **95**, 025001 (2005).
- ⁸E. Galtier, F. B. Rosmej, T. Dzelzainis, D. Riley, F. Y. Khattak, P. Heimann, R. W. Lee, A. J. Nelson, S. M. Vinko, T. Whitcher, J. S. Wark, T. Tschentscher, S. Toleikis, R. R. Fäustlin, R. Sobierajski, M. Jurek, L. Juha, J. Chalupsky, V. Hajkova, M. Kozlova, J. Krzywinski, and B. Nagler, *Phys. Rev. Lett.* **106**, 164801 (2011).
- ⁹F. Krausz and M. Ivanov, *Rev. Mod. Phys.* **81**, 163 (2009).
- ¹⁰A. Bourdier, *Phys. Fluids* **26**, 1804 (1983).
- ¹¹D. W. Forslund, J. M. Kindel, K. Lee, E. L. Lindman, and R. L. Morse, *Phys. Rev. A* **11**, 679 (1975).
- ¹²F. Brunel, *Phys. Rev. Lett.* **59**, 52 (1987).
- ¹³S. C. Wilks, W. L. Krueer, M. Tabak, and A. B. Langdon, *Phys. Rev. Lett.* **69**, 1383 (1992).
- ¹⁴D. F. Price, R. M. More, R. S. Walling, G. Guethlein, R. L. Shepherd, R. E. Stewart, and W. E. White, *Phys. Rev. Lett.* **75**, 252 (1995).
- ¹⁵T. Kluge, T. Cowan, A. Debus, U. Schramm, K. Zeil, and M. Bussmann, *Phys. Rev. Lett.* **107**, 205003 (2011).
- ¹⁶T. Kluge, M. Bussmann, U. Schramm, and T. E. Cowan, *Phys. Plasmas* **25**, 073106 (2018).
- ¹⁷S. Gordienko, A. Pukhov, O. Shorokhov, and T. Baeva, *Phys. Rev. Lett.* **93**, 115002 (2004).
- ¹⁸T. Baeva, S. Gordienko, and A. Pukhov, *Phys. Rev. E* **74**, 046404 (2006).
- ¹⁹B. Dromey, M. Zepf, A. Gopal, K. Lancaster, M. S. Wei, K. Krushelnick, M. Tatarakis, N. Vakakis, S. Moustazis, R. Kodama, M. Tampo, C. Stoeckl, R. Clarke, H. Habara, D. Neely, S. Karsch, and P. Norreys, *Nat. Phys.* **2**, 456 (2006).
- ²⁰B. Dromey, S. Kar, C. Bellei, D. C. Carroll, R. J. Clarke, J. S. Green, S. Kneip, K. Markey, S. R. Nagel, P. T. Simpson, L. Willingale, P. McKenna, D. Neely, Z. Najmudin, K. Krushelnick, P. A. Norreys, and M. Zepf, *Phys. Rev. Lett.* **99**, 085001 (2007).
- ²¹A. S. Pirozhkov, S. V. Bulanov, T. Z. Esirkepov, M. Mori, A. Sagisaka, and H. Daido, *Phys. Plasmas* **13**, 013107 (2006).
- ²²T. J. M. Boyd and R. Ondarza-Rovira, *Phys. Rev. Lett.* **101**, 125004 (2008).
- ²³A. Debayle, J. Sanz, L. Gremillet, and K. Mima, *Phys. Plasmas* **20**, 053107 (2013).
- ²⁴T. Boyd and R. Ondarza-Rovira, *Phys. Lett. A* **380**, 1368 (2016).
- ²⁵S. V. Bulanov, N. M. Naumova, and F. Pegoraro, *Phys. Plasmas* **1**, 745 (1994).
- ²⁶R. Lichters, J. Meyer-ter-Vehn, and A. Pukhov, *Phys. Plasmas* **3**, 3425 (1996).
- ²⁷A. Gonoskov, *Phys. Plasmas* **25**, 013108 (2018).
- ²⁸A. A. Gonoskov, A. V. Korzhimanov, A. V. Kim, M. Marklund, and A. M. Sergeev, *Phys. Rev. E* **84**, 046403 (2011).
- ²⁹B. Dromey, S. Rykovanov, M. Yeung, R. Hörlein, D. Jung, D. C. Gautier, T. Dzelzainis, D. Kiefer, S. Palaniyppan, R. Shah, J. Schreiber, H. Ruhl, J. C. Fernandez, C. L. S. Lewis, M. Zepf, and B. M. Hegelich, *Nat. Phys.* **8**, 804 (2012).
- ³⁰A. Borot, A. Malvache, X. Chen, A. Jullien, J.-P. Geindre, P. Audebert, G. Mourou, F. Quéré, and R. Lopez-Martens, *Nat. Phys.* **8**, 416 (2012).
- ³¹D. Kormin, A. Borot, G. Ma, W. Dallari, B. Bergues, M. Aladi, I. B. Földes, and L. Veisz, *Nat. Commun.* **9**, 4992 (2018).
- ³²A. Bashinov, A. Gonoskov, A. Kim, G. Mourou, and A. Sergeev, *Eur. Phys. J. Spec. Top.* **223**, 1105 (2014).
- ³³J. Fuchs, A. Gonoskov, M. Nakatsutsumi, W. Nazarov, F. Quéré, A. Sergeev, and X. Yan, *Eur. Phys. J. Spec. Top.* **223**, 1169 (2014).
- ³⁴N. M. Naumova, J. A. Nees, I. V. Sokolov, B. Hou, and G. A. Mourou, *Phys. Rev. Lett.* **92**, 063902 (2004).
- ³⁵S. Gordienko, A. Pukhov, O. Shorokhov, and T. Baeva, *Phys. Rev. Lett.* **94**, 103903 (2005).
- ³⁶H. Vincenti, S. Monchocé, S. Kahaly, G. Bonnaud, P. Martin, and F. Quéré, *Nat. Commun.* **5**, 3403 (2014).
- ³⁷M. R. Edwards and J. M. Mikhailova, *Phys. Rev. A* **93**, 023836 (2016).
- ³⁸Z. Léczy and A. Andreev, *J. Opt. Soc. Am. B* **35**, A49 (2018).
- ³⁹Z.-Y. Chen, *Opt. Lett.* **43**, 2114 (2018).
- ⁴⁰S. Tang and N. Kumar, *Plasma Phys. Controlled Fusion* **61**(2), 025013 (2019).
- ⁴¹M. Blanco, M. T. Flores-Arias, and A. Gonoskov, *Phys. Plasmas* **25**, 093114 (2018).
- ⁴²D. A. Serebryakov, E. N. Nerush, and I. Y. Kostyukov, *Phys. Plasmas* **22**, 123119 (2015).
- ⁴³T. G. Blackburn, A. A. Gonoskov, and M. Marklund, *Phys. Rev. A* **98**, 023421 (2018).
- ⁴⁴B. Svedung Wettervik, A. Gonoskov, and M. Marklund, *Phys. Plasmas* **25**, 013107 (2018).
- ⁴⁵S. Hakimi, T. Nguyen, D. Farinella, C. K. Lau, H.-Y. Wang, P. Taborek, F. Dollar, and T. Tajima, *Phys. Plasmas* **25**, 023112 (2018).
- ⁴⁶S. Gordienko and A. Pukhov, *Phys. Plasmas* **12**, 043109 (2005).
- ⁴⁷A. Gonoskov, E. Wallin, A. Polovinkin, and I. Meyerov, e-print [arXiv:1812.06304](https://arxiv.org/abs/1812.06304).
- ⁴⁸A. Gonoskov, "Ultra-intense laser-plasma interaction for applied and fundamental physics," Ph.D. thesis (Umeå University, 2013).
- ⁴⁹E. Siminos, M. Grech, S. Skupin, T. Schlegel, and V. T. Tikhonchuk, *Phys. Rev. E* **86**, 056404 (2012).