



CHALMERS
UNIVERSITY OF TECHNOLOGY

Maximum modulus principle for “holomorphic functions” on the quantum matrix ball

Downloaded from: <https://research.chalmers.se>, 2026-04-05 22:55 UTC

Citation for the original published paper (version of record):

Bershtein, O., Giselsson, O., Turowska, L. (2019). Maximum modulus principle for “holomorphic functions” on the quantum matrix ball. *Journal of Functional Analysis*, 276(5): 1479-1509.
<http://dx.doi.org/10.1016/j.jfa.2018.09.003>

N.B. When citing this work, cite the original published paper.



ELSEVIER

Contents lists available at ScienceDirect

Journal of Functional Analysis

www.elsevier.com/locate/jfa



Maximum modulus principle for “holomorphic functions” on the quantum matrix ball



Olga Bershtein^a, Olof Giselsson^b, Lyudmila Turowska^{b,*}

^a Department of Mathematics, University of Copenhagen, Universitetsparken 5, 2100 København Ø, Denmark

^b Department of Mathematical Sciences, Chalmers University of Technology and the University of Gothenburg, Gothenburg SE-412 96, Sweden

ARTICLE INFO

Article history:

Received 18 February 2018

Accepted 3 September 2018

Available online 6 November 2018

Communicated by Stefaan Vaes

Keywords:

Quantum group

Boundary ideal

C^* -envelope

ABSTRACT

We describe the Shilov boundary ideal for a q -analog of the algebra of holomorphic functions on the unit ball in the space of $n \times n$ matrices and show that its C^* -envelope is isomorphic to the C^* -algebra of continuous functions on the quantum unitary group $U_q(n)$.

© 2018 Elsevier Inc. All rights reserved.

1. Introduction

In 80s S.L. Woronowicz introduced the notion of a compact quantum group within the framework of C^* -algebras. It was clear from the beginning that one can consider the appearing theory as a counterpart to the theory of compact groups and their representations. For instance, the key Peter–Weyl theorem was proved for the case of compact quantum groups.

* Corresponding author.

E-mail addresses: olya.bersht@gmail.com (O. Bershtein), olofgi@chalmers.se (O. Giselsson), turowska@chalmers.se (L. Turowska).

The concept of a non-compact quantum group was much less clear, the corresponding theory was in need of the key statements (for instance, it was not clear whether there exists a Haar measure on a noncompact quantum group). At that point L. Vaksman and his collaborators suggested another approach to representation theory of noncompact quantum groups. The idea was to construct quantum analogs for homogeneous spaces X of noncompact Lie groups G_0 and then develop representation theory in connection with these quantum spaces.

The object they started with were Hermitian symmetric spaces of non-compact type. Let us briefly recall some facts about them and representation theory in connection. Under the Harish-Chandra embedding, an irreducible Hermitian symmetric space X of non-compact type allows a realization as a unit ball \mathbb{D} in a certain normed vector space. The group of biholomorphic automorphisms $G_0 = \text{Aut}(\mathbb{D})$ is a non-compact real Lie group, and X is a homogeneous space of G_0 . One of the classical approaches to Harish-Chandra modules for non-compact real groups is to derive them from a G_0 -orbits in certain flag variety X_c (see, e.g. [27]). The flag variety X_c is namely the dual of X (in the sense of symmetric space), which is a Hermitian symmetric space of compact type. An important fact is that there is a unique closed G_0 -orbit in X_c . This orbit namely corresponds to the Shilov boundary $S(\mathbb{D})$ of the bounded symmetric domain \mathbb{D} . In particular, if we consider the unit matrix ball $X = \mathbb{D}_n = \{Z \in \text{Mat}_n \mid I - ZZ^* > 0\}$, its group of symmetries G_0 is the group of pseudounitary matrices $SU(n, n)$, the dual Hermitian symmetric space X_c is the Grassmannian $Gr_n(\mathbb{C}^{2n})$ and the Shilov boundary is the group of unitary $n \times n$ -matrices $S(\mathbb{D}_n) = U_n$. The series of Harish-Chandra modules related to the Shilov boundary are called the principal degenerate series.

Quantum bounded symmetric domains were introduced in [20] and studied in the series of papers (see [25] and references therein). The authors associated to a bounded symmetric domain \mathbb{D} in a complex vector space V non-commutative algebras $\mathbb{C}[V]_q$ and $\text{Pol}(V)_q$ which they treated as the algebras of holomorphic resp. arbitrary polynomials on the quantum vector space V ; the algebra of continuous functions on the quantum domain \mathbb{D} are derived then from $\text{Pol}(V)_q$ via some completion procedure. The main obstacle for developing representation theory for quantum G_0 in this setting was that there were no quantum analogs for G_0 -orbits on flag varieties. The Shilov boundary was a happy exception because it itself is a compact symmetric space. Although the construction of quantum Shilov boundary for an arbitrary quantum bounded symmetric domain is rather nontrivial, in some simpler cases the object was already known. In particular, for the quantum analog of the unit matrix ball \mathbb{D}_n , the corresponding quantum U_n , more precisely a q -analog $\mathbb{C}[U_n]_q$ of the algebra of functions on U_n , was well studied. In [23], using a purely algebraic approach, Vaksman defined a q -analog of polynomials $\text{Pol}(S(\mathbb{D}_n))_q$ on the Shilov boundary $U_n = S(\mathbb{D}_n)$ as a $*$ -algebra isomorphic to $\mathbb{C}[U_n]_q$ and produced a $*$ -homomorphism

$$j_q : \text{Pol}(\text{Mat}_n)_q \rightarrow \text{Pol}(S(\mathbb{D}_n))_q;$$

the latter can be understood as a q -analog of the operator that restricts the polynomials on $\overline{\mathbb{D}}_n$ to its Shilov boundary; we refer to the kernel $J_n := \ker j_q$ as algebraic Shilov boundary ideal. The principal degenerate series of the quantum $SU(n, n)$ related to the Shilov boundary were studied in [4]. In the following we want to clarify the connection of the constructed quantum Shilov boundary with its topological (non-commutative) counterpart.

Recall that the classical topological notion of Shilov boundary is used in the study of uniform algebras \mathcal{A} , that is, closed subalgebras of $C(X)$ of all continuous functions on a compact X that separate points and contain constants; this is the smallest subset $S \subset X$ where the functions in \mathcal{A} attain their maximum; the latter means that the restriction of the operator $j : C(X) \rightarrow C(S), f \mapsto f|_S$, to the subalgebra \mathcal{A} is an isometry. In complex analysis the uniform algebras are typically the algebra $\mathcal{A}(X^0)$ of functions holomorphic in the interior X^0 of a compact domain X in a complex vector space; for instance $\mathcal{A}(\mathbb{D}_n) \subset C(\overline{\mathbb{D}}_n)$ for the unit matrix ball \mathbb{D}_n .

In the late 1960s W. Arveson initiated in his influential paper [1] the study of non-commutative uniform algebras as (non-selfadjoint) subalgebras \mathcal{A} of C^* -algebras \mathcal{B} and introduced a non-commutative analog of the Shilov boundary; the latter is the largest ideal $J \subset \mathcal{B}$ such that the quotient map $j : \mathcal{B} \rightarrow \mathcal{B}/J$ is a complete isometry when restricted to \mathcal{A} . A question, which was raised by Vaksman, is whether the “algebraically” constructed Shilov boundary for quantum unit matrix ball coincides with the Arveson one. We give an affirmative answer to this question for general value of n . The cases $n = 1$ and $n = 2$ were treated in [24] and [18], respectively. More precisely, considering a completion $C_F(\overline{\mathbb{D}}_n)_q$ of $\text{Pol}(\text{Mat}_n)_q$, a q -analog of continuous functions in $\overline{\mathbb{D}}_n$, we prove that the closure of the algebraic Shilov boundary ideal J_n is the Shilov boundary ideal in the sense of Arveson for the subalgebra $A(\mathbb{D}_n)_q$ which is the closure of the holomorphic polynomials $\mathbb{C}[\text{Mat}_n]_q$ in the quantum space of $n \times n$ matrices. The pair $(A(\mathbb{D}_n)_q, C_F(\overline{\mathbb{D}}_n)_q)$ is a q -analog of the pair $(A(\mathbb{D}_n), C(\overline{\mathbb{D}}_n))$. Note that the quotient $C_F(\overline{\mathbb{D}}_n)_q/\overline{J}_n$ provides a realization of the C^* -envelope of $A(\mathbb{D}_n)_q$. We refer the reader to [2,7,15] for the background and recent development concerning Shilov boundary and C^* -envelope.

The paper is organized as follows. After finishing this section by introducing some general notational conventions, in section 2.1–2.3 we introduce and collect some properties of the main objects of our study, the algebras $\mathbb{C}[\text{Mat}_n]_q$, $\text{Pol}(\text{Mat}_n)_q$ and $\mathbb{C}[SU_n]_q$. The $*$ -algebra $\text{Pol}(\text{Mat}_n)_q$ possesses a $\mathbb{C}[SU_n \times SU_n]_q$ -comodule structure; it plays a crucial role in our consideration and is presented in Lemma 3. In section 2.4 we discuss $*$ -representations of $\text{Pol}(\text{Mat}_n)_q$. In particular, we propose a new construction of the Fock $*$ -representation $\pi_{F,n}$ of the $*$ -algebra; the representation is known to be the only faithful irreducible $*$ -representation by bounded operators (see [19]). The construction allows to derive a number of consequences about other $*$ -representations of $\text{Pol}(\text{Mat}_n)_q$ which are discussed in sections 2 and 3. The C^* -algebra $C_F(\overline{\mathbb{D}}_n)_q$ is defined to be the completion of $\text{Pol}(\text{Mat}_n)_q$ with respect to the norm $\|f\| = \|\pi_{F,n}(f)\|, f \in \text{Pol}(\text{Mat}_n)_q$, and shown to be a C^* -subalgebra of the (spatial) tensor product $C^*(S)^{\otimes n^2}$ of n^2 copies

of the C^* -algebra generated by the unilateral shift S on $\ell^2(\mathbb{Z}_+)$. In section 3 we prove the main results of the paper: Theorems 3 and 4; they state that \bar{J}_n is the Shilov boundary ideal of $C_F(\overline{\mathbb{D}}_n)_q$ relative the subalgebra $A(\mathbb{D}_n)_q$. As a corollary we obtain that the C^* -envelope of $A(\mathbb{D}_n)_q$ is isomorphic to the C^* -algebra of continuous functions on the quantum unitary group $U_q(n)$, i.e. the C^* -enveloping algebra of $\mathbb{C}[U_n]_q$. Our approach is based on dilation-theoretic arguments. Namely, we construct a $*$ -representation of $\text{Pol}(\text{Mat}_n)_q$ which annihilates the ideal J_n and compresses to the Fock representation when both are restricted to the holomorphic part $\mathbb{C}[\text{Mat}_n]_q$. We refer the reader to [7] and [2] for the dilation ideas to the Shilov boundary ideal and C^* -envelopes.

We finish this section by recalling standard notation and notions that are used in the paper. For a Hilbert space H we let $B(H)$ denote the space of all bounded linear operators on H . We shall write $H \otimes K$ for the Hilbertian tensor product of two Hilbert spaces H and K and $H^{\otimes n}$ for the tensor product of n -copies of H . For an index set I , $\{e_i : i \in I\}$ will always stand for the standard orthonormal basis in the Hilbert space $\ell^2(I)$. If $A \in B(H)$, $B \in B(K)$, then $A \otimes B$ stands for the operator in $B(H \otimes K)$ given by $A \otimes B(\xi \otimes \eta) = A\xi \otimes B\eta$, $\xi \in H$, $\eta \in K$. If $W \subset H$ is a closed subspace and $A \in B(H)$ leaves W invariant then we write $A|_W$ for the restriction of A to W . If \mathcal{A}, \mathcal{B} are $*$ -algebras we write, as usual, $\mathcal{A} \otimes \mathcal{B}$ for the algebraic tensor product of the algebras; if \mathcal{A} and \mathcal{B} are C^* -algebras by $\mathcal{A} \otimes_{\min} \mathcal{B}$ we denote their minimal C^* -tensor product. Even though we shall always have one of the C^* -algebras \mathcal{A} and \mathcal{B} nuclear and hence all C^* -norms on $\mathcal{A} \otimes \mathcal{B}$ will be the same, we shall keep the notation $\mathcal{A} \otimes_{\min} \mathcal{B}$ in order to distinguish the latter from the algebraic tensor product of \mathcal{A} and \mathcal{B} . We write $\mathcal{A}^{\otimes n}$ for the minimal tensor product of n copies of \mathcal{A} .

For a set V , we denote, as usual, by $M_n(V)$ the set of all $n \times n$ matrices with entries in V . It is clearly a vector space if V is such. For a map $\phi : V \rightarrow W$ between vector spaces V and W we let $\phi^{(n)}((a_{i,j})_{i,j}) = (\phi(a_{i,j}))_{i,j}$ for each $(a_{i,j})_{i,j} \in M_n(V)$.

If \mathcal{A} is a $*$ -algebra, any $*$ -homomorphism $\pi : \mathcal{A} \rightarrow B(H)$ is called a bounded $*$ -representation. As in this paper we mostly deal with bounded $*$ -representation we shall often omit the word bounded and write simply a $*$ -representation. The set of all bounded $*$ -representations of \mathcal{A} will be denoted by $\text{Rep}(\mathcal{A})$.

Let $\pi_i : \mathcal{A}_i \rightarrow B(H_i)$ be a $*$ -representation of \mathcal{A}_i , $i = 1, 2$. We write $\pi_1 \otimes \pi_2 : \mathcal{A}_1 \otimes \mathcal{A}_2 \rightarrow B(H_1 \otimes H_2)$ for the $*$ -representation given by $\pi_1 \otimes \pi_2(a_1 \otimes a_2) = \pi_1(a_1) \otimes \pi_2(a_2)$, $a_1 \in \mathcal{A}_1$, $a_2 \in \mathcal{A}_2$. It should not be confused with the tensor product $\pi_1 \otimes \pi_2$ of $*$ -representations of a Hopf $*$ -algebra \mathcal{A} (used in section 2.3), which is actually the $*$ -homomorphism $(\pi_1 \otimes \pi_2) \circ \Delta : \mathcal{A} \rightarrow B(H_1 \otimes H_1)$, where $\Delta : \mathcal{A} \rightarrow \mathcal{A} \otimes \mathcal{A}$ is the co-product on \mathcal{A} .

2. The $*$ -algebras $\text{Pol}(\text{Mat}_n)_q$ and $\mathbb{C}[SU_n]_q$ and their representations

2.1. The $*$ -algebra $\text{Pol}(\text{Mat}_n)_q$

In what follows \mathbb{C} is a ground field and $q \in (0, 1)$. We assume that all the algebras under consideration are unital. Consider the well known algebra $\mathbb{C}[\text{Mat}_n]_q$ defined by its

generators z_a^α , $\alpha, a = 1, \dots, n$, and the commutation relations

$$z_a^\alpha z_b^\beta - q z_b^\beta z_a^\alpha = 0, \quad a = b \ \& \ \alpha < \beta, \ \text{or} \ a < b \ \& \ \alpha = \beta, \quad (1)$$

$$z_a^\alpha z_b^\beta - z_b^\beta z_a^\alpha = 0, \quad \alpha < \beta \ \& \ a > b, \quad (2)$$

$$z_a^\alpha z_b^\beta - z_b^\beta z_a^\alpha - (q - q^{-1}) z_a^\beta z_b^\alpha = 0, \quad \alpha < \beta \ \& \ a < b. \quad (3)$$

This algebra is a quantum analogue of the polynomial algebra $\mathbb{C}[\text{Mat}_n]$ on the space of $n \times n$ matrices. It follows from the Bergman diamond lemma (see [3]) that the lexicographically ordered monomials $(z_n^\alpha)^{\gamma_n} (z_{n-1}^\alpha)^{\gamma_{n-1}} \dots (z_1^\alpha)^{\gamma_1}$, $\gamma_a \in \mathbb{Z}_+$, $\alpha, a = 1, \dots, n$, form a basis of the vector space $\mathbb{C}[\text{Mat}_n]_q$. Hence $\mathbb{C}[\text{Mat}_n]_q$ admits a natural grading given by $\text{deg} z_a^\alpha = 1$.

In a similar way, introduce the algebra $\mathbb{C}[\overline{\text{Mat}}_n]_q$, defined by its generators $(z_a^\alpha)^*$, $\alpha, a = 1, \dots, n$, and the relations

$$(z_b^\beta)^* (z_a^\alpha)^* - q (z_a^\alpha)^* (z_b^\beta)^* = 0, \quad a = b \ \& \ \alpha < \beta, \quad \text{or} \quad a < b \ \& \ \alpha = \beta, \quad (4)$$

$$(z_b^\beta)^* (z_a^\alpha)^* - (z_a^\alpha)^* (z_b^\beta)^* = 0, \quad \alpha < \beta \ \& \ a > b, \quad (5)$$

$$(z_b^\beta)^* (z_a^\alpha)^* - (z_a^\alpha)^* (z_b^\beta)^* - (q - q^{-1}) (z_b^\alpha)^* (z_a^\beta)^* = 0, \quad \alpha < \beta \ \& \ a < b. \quad (6)$$

A grading in $\mathbb{C}[\overline{\text{Mat}}_n]_q$ is given by $\text{deg} (z_a^\alpha)^* = -1$.

Finally, consider the algebra $\text{Pol}(\text{Mat}_n)_q$ whose generators are z_a^α , $(z_a^\alpha)^*$, $\alpha, a = 1, \dots, n$, and the list of relations is formed by (1)–(6) and

$$(z_b^\beta)^* z_a^\alpha = q^2 \cdot \sum_{a', \beta'=1}^n \sum_{\alpha', \beta'=1}^n R_{ba'}^{\beta' \alpha'} R_{\beta \alpha}^{\beta' \alpha'} \cdot z_{a'}^{\alpha'} (z_{b'}^{\beta'})^* + (1 - q^2) \delta_{ab} \delta^{\alpha\beta}, \quad (7)$$

with δ_{ab} , $\delta^{\alpha\beta}$ being the Kronecker symbols, and

$$R_{ij}^{kl} = \begin{cases} q^{-1}, & i \neq j \ \& \ i = k \ \& \ j = l \\ 1, & i = j = k = l \\ -(q^{-2} - 1), & i = j \ \& \ k = l \ \& \ l > j \\ 0, & \text{otherwise.} \end{cases}$$

The involution in $\text{Pol}(\text{Mat}_n)_q$ is introduced in the obvious way: $*$: $z_a^\alpha \mapsto (z_a^\alpha)^*$.

Recall a standard notation for the q -determinant of the matrix $\mathbf{z} = (z_a^\alpha)_{\alpha, a=1}^n$:

$$\det_q \mathbf{z} = \sum_{s \in S_n} (-q)^{l(s)} z_1^{s(1)} z_2^{s(2)} \dots z_n^{s(n)},$$

with $l(s) = \text{card}\{(i, j) \mid i < j \ \& \ s(i) > s(j)\}$. It is well-known that $\det_q \mathbf{z}$ is in the center of $\mathbb{C}[\text{Mat}_n]_q$.

In order to introduce the Shilov boundary for the quantum matrix ball we will need the algebra of regular functions on the quantum GL_n , denoted by $\mathbb{C}[GL_n]_q$ (see [12]). It is the localization of $\mathbb{C}[\text{Mat}_n]_q$ with respect to the multiplicative system $(\det_q \mathbf{z})^{\mathbb{N}}$. The algebra $\mathbb{C}[GL_n]_q$ possesses a unique involution $*$ given by

$$(z_a^\alpha)^* = (-q)^{a+\alpha-2n} (\det_q \mathbf{z})^{-1} \det_q \mathbf{z}_a^\alpha \tag{8}$$

with \mathbf{z}_a^α being the matrix derived from \mathbf{z} by deleting the α -th row and a -th column. Furthermore,

$$\det_q \mathbf{z} (\det_q \mathbf{z})^* = (\det_q \mathbf{z})^* \det_q \mathbf{z} = q^{-n(n-1)} \tag{9}$$

(see [23, Lemma 2.1]).

Theorem 1 ([23]). *There exists a unique $*$ -homomorphism*

$$\psi : \text{Pol}(\text{Mat}_n)_q \rightarrow (\mathbb{C}[GL_n]_q, *)$$

such that $\psi : z_a^\alpha \mapsto z_a^\alpha$, $\alpha, a = 1, \dots, n$.

Note that the $*$ -algebra $(\mathbb{C}[GL_n]_q, *)$ is isomorphic to the $*$ -algebra $\mathbb{C}[U_n]_q = (\mathbb{C}[GL_n]_q, \star)$ of regular functions on the quantum U_n (see [13]) with the isomorphism $\iota : (\mathbb{C}[GL_n]_q, *) \rightarrow (\mathbb{C}[GL_n]_q, \star)$ given by $\iota : z_a^\alpha \rightarrow q^{\alpha-n} z_a^\alpha$, $a, \alpha = 1, \dots, n$; the involution \star in $\mathbb{C}[U_n]_q$ satisfies $(z_a^\alpha)^\star = (-q)^{a-\alpha} (\det_q \mathbf{z})^{-1} \det_q \mathbf{z}_a^\alpha$, $a, \alpha = 1, \dots, n$.

We finish the section by a lemma that makes a connection between $\text{Pol}(\text{Mat}_n)_q$ for different values of n . For $\varphi \in [0, 2\pi)$ let

$$\Pi_\varphi(z_j^i) = \begin{cases} q^{-1} z_j^i, & i, j < n, \\ e^{i\varphi}, & i = j = n, \\ 0, & \text{otherwise.} \end{cases} \tag{10}$$

Lemma 1.

1. The map Π_φ extends uniquely to a $*$ -homomorphism from $\text{Pol}(\text{Mat}_n)_q$ to $\text{Pol}(\text{Mat}_{n-1})_q$.
2. The map $z_j^i \mapsto z_{j+n}^{i+n}$, $i, j = 1, \dots, n$ defines an embedding of $\text{Pol}(\text{Mat}_n)_q$ into $\text{Pol}(\text{Mat}_{2n})_q$.

Proof. 1. It is enough to check that all relations (1)–(7) turn to correct identities under Π_φ . Relations (1)–(3) are checked easily. Indeed, if such a relation does not involve elements of the last row or column of $(z_j^i)_{i,j=1}^n$, then it remains the same. If a relation contains z_n^n , then either it is a relation of type (1) and under Π_φ it transforms to $0 = 0$, or it is a relation of type (3) and under Π_φ it transforms to $q^{-1} e^{i\varphi} z_j^i = q^{-1} e^{i\varphi} z_j^i$. If,

finally, a relation involves some element from the last column or row but not z_n^n , then it transforms to $0 = 0$.

Now let us check the relations between holomorphic and antiholomorphic generators, namely, relations of type (7). Let us consider several cases. The first case is $a \neq b$ and $\alpha \neq \beta$. Then the explicitly written commutation relation has the form $(z_b^\beta)^* z_a^\alpha = z_a^\alpha (z_b^\beta)^*$, and this relation either survives under Π_φ or turns to the identity $0 = 0$.

The second case is when one of the pairs of indices (a, b) and (α, β) coincides and the other does not. These cases are completely similar, so we will elaborate here only one. Let us suppose that $a = b$. Then the commutation relation can be rewritten in a more explicit way as follows: $(z_a^\beta)^* z_a^\alpha = q \sum_{a'=1}^n R_{aa}^{a'a'} z_{a'}^\alpha (z_{a'}^\beta)^*$. If $a = n$, then Π_φ maps this relation to the identity $0 = 0$, since $\alpha \neq \beta$. Let us now assume that $a < n$. If either α or β equals n , then also Π_φ maps this relation to the identity $0 = 0$. Finally, if all indices are less than n , then Π_φ maps this relation to the relation $q^{-2} (z_a^\beta)^* z_a^\alpha = q \sum_{a'=1}^{n-1} R_{aa}^{a'a'} z_{a'}^\alpha q^{-2} (z_{a'}^\beta)^*$ which holds in $\text{Pol}(\text{Mat}_{n-1})_q$.

Now let us consider the last case where $a = b$ and $\alpha = \beta$. Then the relation can be written more explicitly as

$$(z_a^\alpha)^* z_a^\alpha = q^2 \sum_{a'=1}^n \sum_{\alpha'=1}^n R_{aa}^{a'a'} R_{\alpha\alpha}^{\alpha'\alpha'} z_{a'}^{\alpha'} (z_{a'}^{\alpha'})^* + 1 - q^2.$$

If $a = \alpha = n$, then we have the standard relation $(z_n^n)^* z_n^n = q^2 z_n^n (z_n^n)^* + 1 - q^2$ which is mapped by Π_φ to the identity $1 = q^2 + 1 - q^2$.

If $a = n$ and $\alpha < n$ (the other case is analogous), we have the relation

$$(z_n^\alpha)^* z_n^\alpha = q^2 \sum_{\alpha'=1}^n R_{\alpha\alpha}^{\alpha'\alpha'} z_n^{\alpha'} (z_n^{\alpha'})^* + 1 - q^2.$$

Π_φ maps this relation to the identity $0 = -q^2(q^{-2} - 1) + 1 - q^2$.

Finally, if $a < n$ and $\alpha < n$, then we can rewrite the relation in the most explicit way as follows:

$$(z_a^\alpha)^* z_a^\alpha = q^2 z_a^\alpha (z_a^\alpha)^* - q^2 \sum_{a'=a+1}^n (q^{-2} - 1) z_{a'}^\alpha (z_{a'}^\alpha)^* - q^2 \sum_{\alpha'=\alpha+1}^n (q^{-2} - 1) z_a^{\alpha'} (z_a^{\alpha'})^* + q^2 \sum_{a'=a+1}^n \sum_{\alpha'=\alpha+1}^n (q^{-2} - 1)^2 z_{a'}^{\alpha'} (z_{a'}^{\alpha'})^* + 1 - q^2.$$

Applying Π_φ , we get the relation

$$q^{-2} (z_a^\alpha)^* z_a^\alpha = z_a^\alpha (z_a^\alpha)^* - \sum_{a'=a+1}^{n-1} (q^{-2} - 1) z_{a'}^\alpha (z_{a'}^\alpha)^* - \sum_{\alpha'=\alpha+1}^{n-1} (q^{-2} - 1) z_a^{\alpha'} (z_a^{\alpha'})^* + \sum_{a'=a+1}^{n-1} \sum_{\alpha'=\alpha+1}^{n-1} (q^{-2} - 1)^2 z_{a'}^{\alpha'} (z_{a'}^{\alpha'})^* + q^2 (q^{-2} - 1)^2 + 1 - q^2.$$

Obviously, $q^2(q^{-2} - 1)^2 + 1 - q^2 = q^{-2}(1 - q^2)$, so after multiplying the relation by the common factor q^2 we get the corresponding relation in $\text{Pol}(\text{Mat}_{n-1})_q$. So, we also checked all the relations between holomorphic and antiholomorphic generators of $\text{Pol}(\text{Mat}_n)_q$ and the map Π_φ admits an extension to an algebra morphism. Its uniqueness is obvious.

2. It is a consequence of a similar easy inspection of the commutation relations; we leave the details to the reader. \square

2.2. The quantum universal enveloping algebra $U_q\mathfrak{sl}_N$ and its action on $\text{Pol}(\text{Mat}_n)_q$

The Drinfeld–Jimbo quantum universal enveloping algebra is among the basic notions of the quantum group theory. Recall the definition of the Hopf algebra $U_q\mathfrak{sl}_N$ [10]. Let $(a_{i,j})_{i,j=1}^{N-1}$ be the Cartan matrix of \mathfrak{sl}_N :

$$a_{i,j} = \begin{cases} 2, & i - j = 0, \\ -1, & |i - j| = 1, \\ 0, & \text{otherwise.} \end{cases}$$

The algebra $U_q\mathfrak{sl}_N$ is determined by the generators $E_i, F_i, K_i, K_i^{-1}, i = 1, \dots, N - 1$, and the relations

$$\begin{aligned} K_i K_j &= K_j K_i, & K_i K_i^{-1} &= K_i^{-1} K_i = 1, & K_i E_j &= q^{a_{ij}} E_j K_i, & K_i F_j &= q^{-a_{ij}} F_j K_i, \\ E_i F_j - F_j E_i &= \delta_{ij} (K_i - K_i^{-1}) / (q - q^{-1}), \\ E_i^2 E_j - (q + q^{-1}) E_i E_j E_i + E_j E_i^2 &= 0, & |i - j| &= 1, \\ F_i^2 F_j - (q + q^{-1}) F_i F_j F_i + F_j F_i^2 &= 0, & |i - j| &= 1, \\ E_i E_j - E_j E_i &= F_i F_j - F_j F_i = 0, & |i - j| &\neq 1. \end{aligned}$$

The comultiplication Δ , the antipode S , and the counit ε are determined by

$$\begin{aligned} \Delta(E_i) &= E_i \otimes 1 + K_i \otimes E_i, & \Delta(F_i) &= F_i \otimes K_i^{-1} + 1 \otimes F_i, & \Delta(K_i) &= K_i \otimes K_i, \\ S(E_i) &= -K_i^{-1} E_i, & S(F_i) &= -F_i K_i, & S(K_i) &= K_i^{-1}, \\ \varepsilon(E_i) &= \varepsilon(F_i) = 0, & \varepsilon(K_i) &= 1. \end{aligned}$$

Let $U_q\mathfrak{su}_{n,N-n}$ denote the $*$ -Hopf algebra $(U_q\mathfrak{sl}_N, *)$ given by

$$(K_j^{\pm 1})^* = K_j^{\pm 1}, \quad E_j^* = \begin{cases} K_j F_j, & j \neq n, \\ -K_j F_j, & j = n, \end{cases} \quad F_j^* = \begin{cases} E_j K_j^{-1}, & j \neq n, \\ -E_j K_j^{-1}, & j = n, \end{cases}$$

with $j = 1, \dots, N - 1$.

An important fact from the theory of quantum bounded symmetric domains is that the $*$ -algebra $\text{Pol}(\text{Mat}_n)_q$ possesses a quantum symmetry with respect to $U_q\mathfrak{su}_{n,n}$. Recall a

general notion of a module algebra. Namely, let A be a Hopf algebra, B an A -module and an algebra. Then B is called an A -module algebra if the multiplication and embedding of the unit are morphisms of A -modules. If both A and B possess involutions, then they should satisfy the compatibility condition $(ab)^* = (S(a))^*b^*$ for each $a \in A, b \in B$.

Proposition 1 ([20]). *The $*$ -algebra $\text{Pol}(\text{Mat}_n)_q$ possesses a $U_q\mathfrak{su}_{n,n}$ -module algebra structure.*

From here on we will focus on the $*$ -subalgebra of $U_q\mathfrak{su}_{n,n}$ generated by all $K_j^{\pm 1}, E_j, F_j$ for $j \neq n$. This subalgebra will be denoted as $U_q\mathfrak{su}_n \otimes U_q\mathfrak{su}_n$. The formulas below completely determine the $U_q\mathfrak{su}_n \otimes U_q\mathfrak{su}_n$ -action on $\text{Pol}(\text{Mat}_n)_q$.

For $a, \alpha = 1, \dots, n$ and $k < n$ we have

$$K_k^{\pm 1} z_a^\alpha = \begin{cases} q^{\pm 1} z_a^\alpha, & a = k, \\ q^{\mp 1} z_a^\alpha, & a = k + 1, \\ z_a^\alpha, & \text{otherwise,} \end{cases} \tag{11}$$

$$F_k z_a^\alpha = q^{1/2} \cdot \begin{cases} z_{a+1}^\alpha, & a = k, \\ 0, & \text{otherwise,} \end{cases} \tag{12}$$

$$E_k z_a^\alpha = q^{-1/2} \cdot \begin{cases} z_{a-1}^\alpha, & a = k + 1, \\ 0, & \text{otherwise,} \end{cases} \tag{13}$$

while for $k > n$ we have

$$K_k^{\pm 1} z_a^\alpha = \begin{cases} q^{\pm 1} z_a^\alpha, & \alpha = 2n - k, \\ q^{\mp 1} z_a^\alpha, & \alpha = 2n - k + 1, \\ z_a^\alpha, & \text{otherwise,} \end{cases} \tag{14}$$

$$F_k z_a^\alpha = q^{1/2} \cdot \begin{cases} z_a^{\alpha+1}, & \alpha = 2n - k, \\ 0, & \text{otherwise,} \end{cases} \tag{15}$$

$$E_k z_a^\alpha = q^{-1/2} \cdot \begin{cases} z_a^{\alpha-1}, & \alpha = 2n - k + 1, \\ 0, & \text{otherwise.} \end{cases} \tag{16}$$

Recall that the action on other elements of $\text{Pol}(\text{Mat}_n)_q$ can be obtained from the property that $\xi(fg) = \sum_i \xi_i^{(1)}(f)\xi_i^{(2)}(g)$ and $S(\xi)^*(f^*) = (\xi(f))^*$ for $\xi \in U_q\mathfrak{su}_n \otimes U_q\mathfrak{su}_n, f, g \in \text{Pol}(\text{Mat}_n)_q$ and $\Delta(\xi) = \sum_i \xi_i^{(1)} \otimes \xi_i^{(2)}$ (in the Sweedler notation).

The above formulas show that the action of $U_q\mathfrak{su}_n \otimes U_q\mathfrak{su}_n$ preserves the degree of each element $f \in \text{Pol}(\text{Mat}_n)_q$. As a simple corollary, we have

Lemma 2. *The $U_q\mathfrak{su}_n \otimes U_q\mathfrak{su}_n$ -action in $\text{Pol}(\text{Mat}_n)_q$ is locally finite.*

2.3. The \ast -algebra $\mathbb{C}[SU_n]_q$ and its coaction

Recall the definition of the Hopf algebra $\mathbb{C}[SL_n]_q$. It is defined by the generators $\{t_{i,j} : i, j = 1, \dots, n\}$ and the relations

$$\begin{aligned} t_{\alpha,a}t_{\beta,b} - qt_{\beta,b}t_{\alpha,a} &= 0, & a = b \ \&\ \alpha < \beta, \ \text{or} \ a < b \ \&\ \alpha = \beta, \\ t_{\alpha,a}t_{\beta,b} - t_{\beta,b}t_{\alpha,a} &= 0, & \alpha < \beta \ \&\ \ a > b, \\ t_{\alpha,a}t_{\beta,b} - t_{\beta,b}t_{\alpha,a} - (q - q^{-1})t_{\beta,a}t_{\alpha,b} &= 0, & \alpha < \beta \ \&\ \ a < b, \\ \det_q \mathbf{t} &= 1. \end{aligned}$$

Here $\det_q \mathbf{t}$ is the q -determinant of the matrix $\mathbf{t} = (t_{\alpha,a})_{\alpha,a=1}^n$.

It is well known (see [12] or other standard book on quantum groups) that $\mathbb{C}[SU_n]_q \stackrel{\text{def}}{=} (\mathbb{C}[SL_n]_q, \star)$ is a Hopf \ast -algebra; the comultiplication Δ , the counit ε , the antipode S and the involution \star are defined as follows

$$\Delta(t_{i,j}) = \sum_k t_{i,k} \otimes t_{k,j}, \quad \varepsilon(t_{i,j}) = \delta_{ij}, \quad S(t_{i,j}) = (-q)^{i-j} \det_q \mathbf{t}_{ji},$$

and

$$t_{i,j}^\star = (-q)^{j-i} \det_q \mathbf{t}_{ij},$$

where \mathbf{t}_{ij} is the matrix derived from \mathbf{t} by discarding its i -th row and j -th column. We have, in particular,

$$S(t_{i,j}) = t_{j,i}^\star, \text{ and } S^2(t_{i,j}) = q^{2(i-j)}t_{i,j}, \quad i, j = 1, \dots, n \tag{17}$$

([12, Proposition 9.10]). From the relations it easily follows that the mapping $t_{i,j} \mapsto q^{i-j}t_{i,j}$ extends to an automorphism α of $\mathbb{C}[SU_n]_q$ such that $\alpha(t_{i,j}^\star) = q^{j-i}t_{i,j}^\star$. Combining, for example, this result with (17), one can see that

$$\theta : t_{i,j} \mapsto q^{j-i}t_{j,i} \tag{18}$$

gives a \ast -automorphism of $\mathbb{C}[SU_n]_q$: we have $\theta(t_{i,j}) = \alpha(S(t_{i,j})^\star)$.

There is a canonical isomorphism $\mathbb{C}[SU_n]_q \simeq \mathbb{C}[U_n]_q / \langle \det_q \mathbf{z} - 1 \rangle$, given by $t_{i,j} \mapsto z_j^i + \langle \det_q \mathbf{z} - 1 \rangle$, $i, j = 1, \dots, n$; here $\langle \det_q \mathbf{z} - 1 \rangle$ denotes the two-sided \ast -ideal generated by $\det_q \mathbf{z} - 1$ (see [12]).

Theorem 1 and the remark after it give a \ast -homomorphism $\phi : \text{Pol}(\text{Mat}_n) \rightarrow \mathbb{C}[SU_n]_q$ such that

$$\phi(z_j^i) = q^{i-n}t_{i,j}, \quad i, j = 1, \dots, n. \tag{19}$$

Let us recall here the standard construction of $*$ -representations of $\mathbb{C}[SU_n]_q$. Consider the Hilbert space $l^2(\mathbb{Z}_+)$ with the standard basis $\{e_n : n \in \mathbb{Z}_+\}$. The formulas

$$\begin{aligned} \Pi(t_{1,1})e_n &= (1 - q^{2n})^{1/2}e_{n-1}, & \Pi(t_{1,2})e_n &= q^{n+1}e_n, \\ \Pi(t_{2,1})e_n &= -q^n e_n, & \Pi(t_{2,2})e_n &= (1 - q^{2n+2})^{1/2}e_{n+1}, \quad n \in \mathbb{Z}_+ \end{aligned}$$

define an irreducible $*$ -representation of $\mathbb{C}[SU_2]_q$, (see e.g. [12] or [14]).

For $j \in \{1, \dots, n - 1\}$ let $\psi_j : \mathbb{C}[SU_n]_q \rightarrow \mathbb{C}[SU_2]_q$ denote the morphism of $*$ -Hopf algebras defined on the generators as follows:

$$\psi_j(t_{a,b}) = \begin{cases} t_{a-j+1,b-j+1}, & j \leq a, b \leq j + 1, \\ \delta_{ab}, & \text{otherwise.} \end{cases}$$

Recall that the symmetric group S_n is the Weyl group of \mathfrak{sl}_n , and denote by s_1, \dots, s_{n-1} the transpositions $(1, 2), \dots, (n - 1, n)$, respectively. For each s_j one can associate an irreducible $*$ -representation of $\mathbb{C}[SU_n]_q$ via $\pi_{s_j} = \Pi \circ \psi_j$.

Let s be an arbitrary element of the Weyl group, and $s = s_{j_1} \dots s_{j_k}$ its reduced decomposition. Then one associates to it the $*$ -representation of the Hopf $*$ -algebra $\mathbb{C}[SU_n]_q$ by the rule:

$$\pi_s = \pi_{s_{j_1}} \otimes \dots \otimes \pi_{s_{j_k}}.$$

A remarkable result of Soibelman [21,22] and Soibelman and Vaksman [26] (see also [14, chapter 3.6] for a general result) says that π_s is irreducible and does not depend on the reduced decomposition, i.e. two representations obtained through this construction are unitarily equivalent if and only if they correspond to the same element of the Weyl group; moreover, any irreducible representation of $\mathbb{C}[SU_n]_q$ differs from some π_s by tensor multiplication by a one-dimensional representation.

Recall a general fact on the connection between modules and comodules of algebras and their Hopf duals. In the following proposition A° denotes the Hopf dual (or the finite dual) of an algebra A (the definition can be found in [5] [p. 82]).

Proposition 2 ([5] [pp. 86–87]).

- Let A be an algebra and V be a left A -module. Then V can be made into a right A° -comodule whose associated left A -module is V if and only if V is a locally finite A -module.
- V possesses a left A -module locally finite algebra structure if and only if there exists a right A° -comodule algebra structure on it.

Lemma 3. *The map*

$$\mathcal{D}_n : z_j^i \mapsto \sum_{a,b=1}^n z_b^a \otimes t_{b,j} \otimes t_{a,i}, i, j = 1, \dots, n$$

*extends uniquely to a *-homomorphism*

$$\mathcal{D}_n : \text{Pol}(\text{Mat}_n)_q \rightarrow \text{Pol}(\text{Mat}_n)_q \otimes \mathbb{C}[SU_n]_q \otimes \mathbb{C}[SU_n]_q.$$

Proof. Let us focus on the first part $U_q\mathfrak{sl}_n \subset U_q\mathfrak{sl}_n \otimes U_q\mathfrak{sl}_n$, arguments for the second one are the same. Recall that $\mathbb{C}[SL_n]_q$ is the (finite) dual for the quantum universal enveloping algebra $U_q\mathfrak{sl}_n$. As the $U_q\mathfrak{sl}_n$ -action on $\text{Pol}(\text{Mat}_n)_q$ defined by (11)–(13) is locally finite, we can apply the previous proposition to obtain a right $\mathbb{C}[SL_n]_q$ -comodule algebra structure on $\text{Pol}(\text{Mat}_n)_q$. We claim that this coaction is given by

$$z_j^i \mapsto \sum_{b=1}^n z_b^i \otimes t_{b,j}, \quad 1 \leq i, j \leq n. \tag{20}$$

To see this it is enough to verify that

$$\xi \cdot z_j^i = \sum_{b=1}^n z_b^i t_{b,j}(\xi) \text{ for any } \xi \in U_q\mathfrak{sl}_n, 1 \leq i, j \leq n. \tag{21}$$

For the generators $\xi \in U_q\mathfrak{sl}_n$ this can be easily recovered from the explicit formulas for the linear functionals $t_{b,j} \in \mathbb{C}[SL_n]_q \subset (U_q\mathfrak{sl}_n)^*$. One has

$$t_{i,i+1}(E_i) = q^{-1/2}, \quad t_{i+1,i}(F_i) = q^{1/2}, \quad t_{i,i}(K_i) = q, \quad t_{i,i}(K_{i-1}) = q^{-1}, \quad i = 1, \dots, n,$$

and all other evaluations of $t_{b,j}$ on the generators of $U_q\mathfrak{sl}_n$ are zero (see e.g. [12]).

To see that (21) holds for any $\xi \in U_q\mathfrak{sl}_n$ it is enough to observe that whenever $\sum_{b=1}^n z_b^i t_{b,j}(\xi_m) = \xi_m \cdot z_j^i$, $m = 1, 2$, then

$$\begin{aligned} \sum_{b=1}^n z_b^i t_{b,j}(\xi_1 \xi_2) &= \sum_{b=1}^n z_b^i \Delta(t_{b,j})(\xi_1 \otimes \xi_2) = \sum_{b=1}^n z_b^i \sum_{k=1}^n t_{b,k}(\xi_1) t_{k,j}(\xi_2) \\ &= \sum_{k=1}^n \left(\sum_{b=1}^n z_b^i t_{b,k}(\xi_1) \right) t_{k,j}(\xi_2) = \sum_{k=1}^n (\xi_1 \cdot z_k^i) t_{k,j}(\xi_2) = \xi_1 \cdot \left(\sum_{k=1}^n z_k^i t_{k,j}(\xi_2) \right) \\ &= \xi_1 \cdot (\xi_2 \cdot z_j^i) = (\xi_1 \xi_2) \cdot z_j^i. \end{aligned}$$

Since the algebra $\text{Pol}(\text{Mat}_n)_q$ is a $U_q\mathfrak{su}_n$ -module algebra, and the involutions in $U_q\mathfrak{su}_n$ and $\mathbb{C}[SU_n]_q$ are compatible, one deduces that the map (20) extends to a *-homomorphism. \square

2.4. On $*$ -representation of $\text{Pol}(\text{Mat}_n)_q$

In this section we shall discuss $*$ -representations of the $*$ -algebra $\text{Pol}(\text{Mat}_n)_q$. One of the most important $*$ -representations of $\text{Pol}(\text{Mat}_n)_q$ is the so-called Fock representation which we now define.

Let $\mathcal{H}_{F,n}$ be a $\text{Pol}(\text{Mat}_n)_q$ -module with one generator v_0 and the defining relations

$$\pi_{F,n}(z_j^i)^* v_0 = 0, \quad i, j = 1, \dots, n.$$

It was proved in [19, Corollary 2.3, Proposition 2.4, Proposition 2.5] that there exists a unique sesquilinear form (\cdot, \cdot) on $\mathcal{H}_{F,n}$ such that $(v_0, v_0) = 1$ and $(\pi_{F,n}(f)u, v) = (u, \pi_{F,n}(f^*)v)$ for any $f \in \text{Pol}(\text{Mat}_n)_q$, $u, v \in \mathcal{H}_{F,n}$. Moreover, the sesquilinear form is positive definite and the linear mappings $\pi_{F,n}(f)$ define a bounded $*$ -representation, called the Fock representation, of $\text{Pol}(\text{Mat}_n)_q$; it acts on the Hilbert space $H_{F,n}$ which is the completion of $\mathcal{H}_{F,n}$ with respect to (\cdot, \cdot) .

We say that a $*$ -representation $\pi : \text{Pol}(\text{Mat}_n)_q \rightarrow B(H)$ has a vacuum vector if there exists a unit vector v in H such that $\pi(z_j^i)^* v = 0$ for any $i, j = 1, \dots, n$; any such vector v is called a *vacuum vector* for π . The Fock representation is the only (up to unitary equivalence) irreducible $*$ -representation of $\text{Pol}(\text{Mat}_n)_q$ that possesses a vacuum vector (see [19]).

Let $C_F(\overline{\mathbb{D}}_n)_q$ be the C^* -subalgebra of $B(H_{F,n})$ generated by the operators $\pi_{F,n}(z_j^i)$, $i, j = 1, \dots, n$.

By [19], $\pi_{F,n}$ is a faithful irreducible representation of the $*$ -algebra $\text{Pol}(\text{Mat}_n)_q$. When $n = 1$ and $n = 2$ it was proved in [16,24] and [17] that $\|\pi(a)\| \leq \|\pi_{F,n}(a)\|$ for any bounded $*$ -representation of $\text{Pol}(\text{Mat}_n)_q$ and $a \in \text{Pol}(\text{Mat}_n)_q$, giving that $C_F(\overline{\mathbb{D}}_n)_q$ is isomorphic to the universal enveloping C^* -algebra of $\text{Pol}(\text{Mat}_n)_q$. Recently, using, in particular, results from the present work, the second author proved in [8] that the statement holds for all values of n .

In order to prove the faithfulness of the Fock representation of the $*$ -algebra $\text{Pol}(\text{Mat}_n)_q$ the authors of [19] gave an explicit construction of the Fock representation: for this they embed first $\text{Pol}(\text{Mat}_n)_q$ in a localization of $\mathbb{C}[SL_{2n}]_q$ with an involution and then use a concrete well understood $*$ -representation of the latter $*$ -algebra. The embedding is highly non-trivial that makes the construction very difficult to work with. In this section we propose a new simpler construction of the Fock representation of $\text{Pol}(\text{Mat}_n)_q$ built out of a representation of $\mathbb{C}[SU_{2n}]_q$. Using this construction we shall derive a number of consequences concerning the C^* -algebra $C_F(\overline{\mathbb{D}}_n)_q$ and its $*$ -representations.

Recall the $*$ -representation Π of $\mathbb{C}[SU_2]_q$ from the previous section and let $C_q, S, d(q) : \ell_2(\mathbb{Z}_+) \rightarrow \ell_2(\mathbb{Z}_+)$ be the operators defined as follows:

$$S e_n = e_{n+1}, \quad C_q e_n = \sqrt{1 - q^{2n}} e_n, \quad d(q) e_n = q^n e_n. \tag{22}$$

We have

$$\Pi(t_{1,1}) = S^*C_q, \quad \Pi(t_{1,2}) = qd(q), \quad \Pi(t_{2,1}) = -d(q), \quad \Pi(t_{2,2}) = C_qS.$$

As in [19] consider the element

$$u = \begin{pmatrix} 1 & 2 & \dots & n & n+1 & n+2 & \dots & 2n \\ n+1 & n+2 & \dots & 2n & 1 & 2 & \dots & n \end{pmatrix} \tag{23}$$

of the symmetric group S_{2n} . This element is the product of n cycles: $u = c_1 \cdot c_2 \dots \cdot c_n$, where $c_k = s_{k+n-1}s_{k+n-2} \dots s_k$ and s_k is the transposition $(k, k + 1)$. The concatenation of the expressions for the cycles c_k gives a reduced decomposition of $u = \sigma_1\sigma_2 \dots \sigma_{n^2}$, $\sigma_i \in \{s_1, \dots, s_{2n-1}\}$. Let

$$\pi_u = \pi_{\sigma_1} \otimes \pi_{\sigma_2} \otimes \dots \pi_{\sigma_{n^2}}$$

be the corresponding representation of $\mathbb{C}[SU_{2n}]_q$ (see section 2.3).

Consider the map

$$\iota : z_j^i \mapsto q^{i-n}t_{n+i,n+j} \in \mathbb{C}[SU_{2n}]_q, \quad 1 \leq i, j \leq n,$$

defined on the generators $\{z_j^i : 1 \leq i, j \leq n\}$ of $\text{Pol}(\text{Mat}_n)_q$. It admits a unique extension to a $*$ -homomorphism $\iota : \text{Pol}(\text{Mat}_n)_q \rightarrow \mathbb{C}[SU_{2n}]_q$ as the composition of the embedding of $\text{Pol}(\text{Mat}_n)_q$ into $\text{Pol}(\text{Mat}_{2n})_q$ that sends z_j^i to z_{j+n}^{i+n} , $1 \leq i, j \leq n$ (see Lemma 1), and the $*$ -homomorphism $\phi : \text{Pol}(\text{Mat}_{2n})_q \rightarrow \mathbb{C}[SU_{2n}]_q$, $z_j^i \mapsto q^{i-2n}t_{i,j}$ (see (19)).

Theorem 2. *Let $\mathcal{T} := \pi_u \circ \iota : \text{Pol}(\text{Mat}_n)_q \rightarrow B(\ell^2(\mathbb{Z}_+)^{\otimes n^2})$. Then \mathcal{T} is unitary equivalent to the Fock representation $\pi_{F,n}$.*

In order to understand the action of \mathcal{T} we shall associate to it a collection of square box diagrams with directed routes in the following way.

For $1 \leq j, k \leq n$ we have

$$\mathcal{T}(z_k^j) = q^{j-n} \sum_{k_1, \dots, k_{n^2-1}=1}^{2n} \pi_{\sigma_1}(t_{n+j,k_1}) \otimes \dots \otimes \pi_{\sigma_{n^2}}(t_{k_{n^2-1},n+k}). \tag{24}$$

Recall from section 2.3 that the only non-zero factors in (24) are

$$\begin{aligned} \pi_{s_i}(t_{i,i+1}) &= qd(q), \quad \pi_{s_i}(t_{i+1,i}) = -d(q), \quad \pi_{s_i}(t_{i,i}) = S^*C_q, \\ \pi_{s_i}(t_{i+1,i+1}) &= C_qS, \quad \pi_{s_i}(t_{k,k}) = I, \quad k \neq i, i + 1, \end{aligned}$$

where $d(q), C_q, S : \ell^2(\mathbb{Z}_+) \rightarrow \ell^2(\mathbb{Z}_+)$ are given by (22) and I stands for the identity operator on $\ell^2(\mathbb{Z}_+)$.

To each non-zero term $\pi_{\sigma_1}(t_{n+j,k_1}) \otimes \cdots \otimes \pi_{\sigma_{n_2}}(t_{k_{n_2-1},n+k})$ in (24) we associate a square tableau consisting of n^2 equal boxes. Each box will represent a factor in the term. The non-zero factors $\pi_{s_i}(t_{i,i+1}), \pi_{s_i}(t_{i+1,i}), \pi_{s_i}(t_{i,i}), \pi_{s_i}(t_{i+1,i+1}), \pi_{s_i}(t_{k,k}), k \neq i, i+1$, will be represented by the following boxes with arrows:

$$\pi_{s_i}(t_{i,i+1}) \rightsquigarrow \boxed{\rightarrow} \tag{25}$$

$$\pi_{s_i}(t_{i+1,i}) \rightsquigarrow \boxed{\uparrow} \tag{26}$$

$$\pi_{s_i}(t_{i,i}) \rightsquigarrow \boxed{\updownarrow} \tag{27}$$

$$\pi_{s_i}(t_{i+1,i+1}) \rightsquigarrow \boxed{\nearrow} \tag{28}$$

$$\pi_{s_i}(t_{k,k}) \rightsquigarrow \boxed{} \tag{29}$$

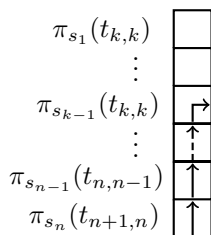
the i -th column of the tableau will correspond to the part related to the cycle $c_i = s_{i+n-1}s_{i+n-2} \dots s_i$ in the decomposition $u = c_1 \cdot c_2 \cdot \dots \cdot c_n$, i.e.

$$\begin{aligned} &\pi_{\sigma_{n(i-1)+1}}(t_{k_{n(i-1)},k_{n(i-1)+1}}) \otimes \cdots \otimes \pi_{\sigma_{n_i}}(t_{k_{n(i-1)},k_{n(i-1)+1}}) \\ &= \pi_{s_{i+n-1}}(t_{k_{n(i-1)},k_{n(i-1)+1}}) \otimes \cdots \otimes \pi_{s_i}(t_{k_{n(i-1)},k_{n(i-1)+1}}) \end{aligned}$$

where the reading from the left to the right in the tensor product will correspond to the moving up along the column. For instance, if the part of a non-zero term corresponding to the first cycle is given by

$$\pi_{s_n}(t_{n+1,n}) \otimes \pi_{s_{n-1}}(t_{n,n-1}) \otimes \cdots \otimes \pi_{s_k}(t_{k+1,k}) \otimes \pi_{s_{k-1}}(t_{k,k}) \otimes \pi_{s_{k-2}}(t_{k,k}) \otimes \cdots \otimes \pi_{s_1}(t_{k,k})$$

we obtain the column:



It is not difficult to see that following the above algorithm applied to a non-zero term of (24) we obtain in the corresponding n by n box tableau a path, called *admissible* and built out of arrow boxes (25)–(29) with the start and end positions (n, j) and (k, n) , respectively. In fact, as $\pi_{s_l}(t_{m,p}) = \delta_{m,p}I$ for $n \geq m > l+1$, we obtain that the elementary tensor

$$\begin{aligned} &\pi_{\sigma_1}(t_{n+j,k_1}) \otimes \cdots \otimes \pi_{\sigma_{n(j-1)+1}}(t_{k_{n(j-1)},k_{n(j-1)+1}}) = \\ &\pi_{s_n}(t_{n+j,k_1}) \otimes \cdots \otimes \pi_{s_1}(t_{k_{n-1},k_n}) \otimes \pi_{s_{n+1}}(t_{k_{n+1},k_{n+2}}) \otimes \cdots \otimes \pi_{s_{n+j-1}}(t_{k_{n(j-1)},k_{n(j-1)+1}}) \end{aligned}$$

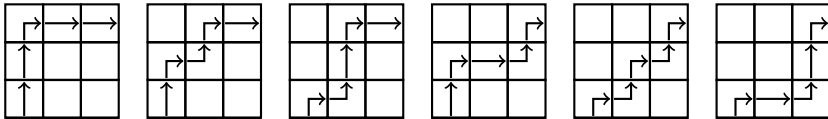
is non-zero if and only if $n+j = k_1 = k_2 = \dots = k_{n(j-1)}$ and $k_{n(j-1)+1}$ is either $n+j-1$ or $n+j$ so that the last factor is either $\pi_{s_{n+j-1}}(t_{n+j,n+j-1})$ or $\pi_{s_{n+j-1}}(t_{n+j,n+j})$ while the

others are the identity operators. Hence the first arrow in the diagrams corresponding to a summand in $\mathcal{T}(z_k^j)$ occurs at the position (n, j) and it is either $\boxed{\uparrow}$ or $\boxed{\rightarrow}$, respectively. Similarly, we observe that

$$\begin{aligned} &\pi_{\sigma_{n^2-k+1}}(t_{k_{n^2-k}, k_{n^2-k+1}}) \otimes \dots \otimes \pi_{\sigma_{n^2}}(t_{k_{n^2-1}, n+k}) \\ &= \pi_{s_{n+k-1}}(t_{k_{n^2-k}, k_{n^2-k+1}}) \otimes \dots \otimes \pi_{s_n}(t_{k_{n^2-1}, n+k}) \end{aligned}$$

is non-zero if and only if $n + k = k_{n^2-1} = \dots = k_{n^2-k+1}$ and k_{n^2-k} is either $n + k$ or $n + k - 1$ so that the first factor is either $\pi_{s_{n+k-1}}(t_{n+k, n+k})$ or $\pi_{s_{n+k-1}}(t_{n+k-1, n+k})$ and the others are the identity operators. Hence the last arrow in the diagrams corresponding to a summand in $\mathcal{T}(z_k^j)$ occurs at the position (k, n) and it is either $\boxed{\rightarrow}$ or $\boxed{\uparrow}$, respectively. With a similar analysis it is not difficult to convince oneself that one gets a connected path from (n, j) to (k, n) ; the details are left to the reader.

We have, in particular, that for $n = 3$ and $j = k = 1$ the diagrams representing the non-zero terms in $\mathcal{T}(z_1^1)$ are given by



The term corresponding, for example, to the first diagram can be easily recovered as $d(q) \otimes d(q) \otimes C_q S \otimes I \otimes I \otimes d(q) \otimes I \otimes I \otimes d(q)$.

With the diagram approach the following result becomes evident.

Lemma 4. *The vector $v_0 = e_0 \otimes \dots \otimes e_0 \in \ell^2(\mathbb{Z}_+)^{\otimes n^2}$ is a vacuum vector for the $*$ -representation \mathcal{T} .*

Proof. The statement follows from the simple observation that any route corresponding to a non-zero term in (24) must contain the right hook arrow box (28) that represents the factor $C_q S$ in the term. Recalling that $(C_q S)^* e_0 = 0$, we get the claim. \square

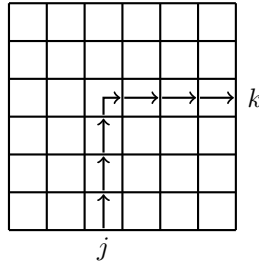
To proceed to the next claim, that can also be easily derived from the associated square box diagrams, we enumerate the boxes in n by n tableaux by numbers from 1 to n^2 counting the boxes in each column from the bottom up and moving gradually from the first column to the last one, i.e. we have the following ordering for the box positions in the tableaux:

$$\begin{aligned} (n, 1) &< (n - 1, 1) < \dots < (1, 1) < (n, 2) < (n - 1, 2) \dots < (1, 2) < \dots \\ &< (n, n) < (n - 1, n) < \dots < (1, n) \end{aligned}$$

Let $h(k, l)$ be the number in $\{1, \dots, n^2\}$ corresponding to the box in the position (k, l) . We have $h(k, l) = n(l - 1) + n - k + 1$ although we will not use this expression.

Lemma 5. *The subspace $\{\mathcal{T}(a)v_0 : a \in \text{Pol}(\text{Mat}_n)_q\}$ is dense in $\ell^2(\mathbb{Z}_+)^{\otimes n^2}$.*

Proof. Consider all admissible routes from (n, j) to (k, n) in our set of tableaux. We observe that the only route which does not contain the upper hook arrow box (27), corresponding to the factor S^*C_q , is of the form



The route represents an operator of the form $R_k^j \otimes C_q S \otimes F_k^j$, where R_k^j, F_k^j are tensor products of the factors $d(q)$ and I . Furthermore, S^*C_q can occur as a factor in a non-zero term for $\mathcal{T}(z_k^j)$ at the position with index which is strictly larger than $h(k, j)$. Recalling now that S^*C_q annihilates e_0 we obtain that for $v = e_{m_1} \otimes \dots \otimes e_{m_{h(k,j)}} \otimes e_0 \otimes \dots \otimes e_0$

$$\mathcal{T}(z_k^j)v = q^{j-n} (R_k^j \otimes C_q S \otimes F_k^j)v,$$

i.e. the only summand in $\mathcal{T}(z_k^j)$ that corresponds to the above route survives after applying $\mathcal{T}(z_k^j)$ to the vector v . Similarly, for $m \geq 1$,

$$\begin{aligned} \mathcal{T}(z_k^j)^m v &= q^{(j-n)m} ((R_k^j)^m \otimes (C_q S)^m \otimes (F_k^j)^m)v \\ &= \beta_k^j(m) e_{m_1} \otimes \dots \otimes e_{m_{h(k,j)-1}} \otimes e_{m_{h(k,j)}+m} \otimes e_0 \otimes \dots \otimes e_0 \end{aligned}$$

for some non-zero constant $\beta_k^j(m)$ (depending on $m_1, \dots, m_{h(k,j)}$).

By letting $X_{h(k,j)} = \mathcal{T}(z_k^j)$ we can now easily obtain that

$$\begin{aligned} X_{n^2}^{m_{n^2}} \dots X_2^{m_2} X_1^{m_1} v_0 &= \beta_1(m_1) X_{n^2}^{m_{n^2}} \dots X_2^{m_2} (e_{m_1} \otimes e_0 \otimes e_0 \otimes \dots \otimes e_0) \\ &= \beta_1(m_1) \beta_2(m_1, m_2) X_{n^2}^{m_{n^2}} \dots X_3^{m_3} (e_{m_1} \otimes e_{m_2} \otimes e_0 \otimes \dots \otimes e_0) = \dots \\ &= \prod_{i=1}^{n^2} \beta_i(m_1, \dots, m_i) e_{m_1} \otimes e_{m_2} \otimes e_{m_3} \otimes \dots \otimes e_{m_{n^2}} \end{aligned}$$

for non-zero $\beta_i(m_1, \dots, m_i), i = 1, \dots, n^2$. The proof is done. \square

The proof above gives more, namely if $X_i, i = 1, \dots, n^2$, are as in the proof then we obtain

Corollary 1. $\{X_{n^2}^{m_{n^2}} \dots X_2^{m_2} X_1^{m_1} v_0, m_i \in \mathbb{Z}_+\}$ is an orthogonal basis of $\ell^2(\mathbb{Z}_+)^{n^2}$.

We can now complete the proof of the theorem.

Proof of Theorem 2. As the Fock representation is the only $*$ -representation (up to unitary equivalence) that has a cyclic vacuum vector (see [19]), the statement follows from Lemma 4 and Lemma 5. \square

We proceed with deriving a number of useful corollaries from our construction of the Fock representation.

Let $C^*(S)$ be the C^* -algebra generated by the isometry S . It is easy to see that the operators $C_q, S, d(q) \in B(\ell^2(\mathbb{Z}_+))$ satisfy the following relations

$$C_q = (1 - q^2)^{1/2} \left(\sum_{n=0}^{\infty} q^{2n} S^{n+1} (S^*)^{n+1} \right)^{1/2}, \tag{30}$$

$$d(q) = \sum_{n=0}^{\infty} q^n (S^n (S^*)^n - S^{n+1} (S^*)^{n+1}), \quad S^0 := 1, \tag{31}$$

where the series converge in the operator norm topology. Consequently, $C_q, d(q) \in C^*(S)$.

Identifying $\pi_{F,n}$ with the representation \mathcal{T} of Theorem 2, we have

Corollary 2. $C_F(\overline{\mathbb{D}}_n)_q \subset C^*(S)^{\otimes n^2}$.

Proof. Each $\mathcal{T}(z_k^j)$ is a linear combination of elementary tensors in $B(\ell^2(\mathbb{Z}_+))^{\otimes n^2}$ each factor of which is either $d(q), C_q S, S^* C_q$ or I , the latter are elements of $C^*(S)$. \square

Let \mathcal{K} be the space of compact operators on $\ell^2(\mathbb{Z}_+)$ and $C(\mathbb{T})$ be the C^* -algebra of continuous functions on the torus $\mathbb{T} = \{z \in \mathbb{C} : |z| = 1\}$. It is known that

$$\phi : C^*(S) \rightarrow C(\mathbb{T}), S \mapsto z, \tag{32}$$

is a surjective $*$ -homomorphism with kernel $\ker \phi = \mathcal{K}$ (see e.g. [6]). In particular, by (30)–(31)

$$\phi(d(q)) = 0 \text{ and } \phi(C_q) = 1. \tag{33}$$

This is essential for the proof of the following lemma.

Lemma 6. Let $\varphi = (\varphi_1, \dots, \varphi_n) \in [0, 2\pi)^n$ and $\chi_\varphi : z_k^l \rightarrow e^{i\varphi_k} q^{l-n} \delta_{kl}, k, l = 1, \dots, n$. Then χ_φ extends uniquely to a $*$ -representation of $\text{Pol}(\text{Mat}_n)_q$. Moreover, $|\chi_\varphi(a)| \leq$

respect to some inner product. For $\psi \in [0, 2\pi)$ let $\omega_\psi : C(\mathbb{T}) \rightarrow \mathbb{C}$ be the evaluation map $f \mapsto f(e^{i\psi})$.

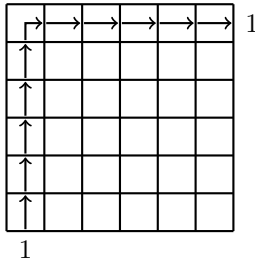
Proposition 3. *Let \mathcal{T} be the Fock representation given in Theorem 2. Then*

$$\mathcal{T}_\psi := (\text{id} \otimes \dots \otimes (\omega_\psi \circ \phi) \otimes \text{id} \otimes \dots \otimes \text{id}) \circ \mathcal{T} : \text{Pol}(\text{Mat}_n)_q \rightarrow C^*(S)^{\otimes(n^2-1)}$$

\uparrow
 n

is unitary equivalent to a coherent representation of $\text{Pol}(\text{Mat}_n)_q$.

Proof. Any admissible route from the position $(n, 1)$ to $(1, n)$ is either



or contains both the right hook and the upper hook arrow boxes in positions different from $(1, 1)$. Hence the corresponding summand in the expression for $\mathcal{T}(z_1^1)$ is either

$$(-1)^{n-1} d(q) \otimes \dots \otimes d(q) \otimes \underset{\uparrow n}{C_q S} \otimes I \otimes \dots \otimes I \otimes \underset{\uparrow 2n}{d(q)} \dots \otimes I \otimes \dots \otimes I \otimes \underset{\uparrow n^2}{d(q)}$$

or an elementary tensor that contains both the factors $C_q S$ and $S^* C_q$ in positions different from $n = h(1, 1)$ and has the identity operator as the n -th factor. Hence applying $(\text{id} \otimes \dots \otimes (\omega_\psi \circ \phi) \otimes \text{id} \otimes \dots \otimes \text{id})$ we obtain

\uparrow
 n

$$\mathcal{T}_\psi(z_1^1)\Omega = (-1)^{n-1} e^{i\psi} \Omega$$

for $\Omega := e_0 \otimes \dots \otimes e_0 \in \ell^2(\mathbb{Z}_+)^{\otimes(n^2-1)}$. That $\mathcal{T}_\psi(z_k^j)^* \Omega = 0$ for $(j, k) \neq (1, 1)$ follows from the fact that any admissible path from (n, j) to (k, n) contains the right hook arrow box in a position different from $(1, 1)$. That Ω is a cyclic vector can be seen using arguments similar to one in Lemma 5. \square

It follows from [11, Proposition 1.3.3] that a coherent representation corresponding to $\varphi \in [0, 2\pi)$ is unique, up to unitary equivalence. We shall denote it by ρ_φ^n .

The following technical result will be needed in the next section and can be easily derived from our box diagrams.

Lemma 7. Let $\varphi \in [0, 2\pi)$. There exist operators $A_{jk}, B \in B(\ell^2(\mathbb{Z}_+^{(n^2-1)}))$ such that $\pi_{F,n}$ and ρ_φ^n are unitary equivalent to the following representations on $\ell^2(\mathbb{Z}_+^{(n^2-1)}) \otimes \ell^2(\mathbb{Z}_+)$ and $\ell^2(\mathbb{Z}_+^{(n^2-1)})$, respectively:

$$\begin{aligned} \tilde{\pi}_{F,n} : z_1^1 &\mapsto B \otimes C_q S + A_{11} \otimes I, & z_k^j &\mapsto A_{jk} \otimes I, & (j, k) &\neq (1, 1) \\ \tilde{\rho}_\varphi^n : z_1^1 &\mapsto e^{i\varphi} B + A_{11}, & z_k^j &\mapsto A_{jk}, & (j, k) &\neq (1, 1) \end{aligned}$$

Proof. Let $\psi \in [0, 2\pi)$, $(-1)^{n-1} e^{i\psi} = e^{i\varphi}$ and let \mathcal{T} and \mathcal{T}_ψ be the Fock and the coherent representations from Theorem 2 and Proposition 3, respectively. It follows from the proof of the previous proposition that

$$\mathcal{T}(z_1^1) = R_1^1 \otimes C_q S \otimes F_1^1 + \sum_i A_1^1(i) \otimes I \otimes B_1^1(i) \tag{34}$$

and

$$\mathcal{T}(z_k^j) = \sum_i A_k^j(i) \otimes I \otimes B_k^j(i), \quad (k, j) \neq (1, 1), \tag{35}$$

for some elementary tensors $R_1^1, F_1^1, A_k^j(i), B_k^j(i)$.

Applying $(\text{id} \otimes \dots \otimes (\omega_\psi \circ \phi) \otimes \text{id} \otimes \dots \otimes \text{id})$ to (34)–(35) gives

$$\mathcal{T}_\psi(z_1^1) = e^{i\psi} R_1^1 \otimes F_1^1 + \sum_i A_1^1(i) \otimes B_1^1(i)$$

and

$$\mathcal{T}_\psi(z_k^j) = \sum_i A_k^j(i) \otimes B_k^j(i), \quad (k, j) \neq (1, 1).$$

Set $A_{jk} = \sum_i A_k^j(i) \otimes B_k^j(i)$ and $B = R_1^1 \otimes F_1^1$ and consider the unitary operator $U : \ell^2(\mathbb{Z}_+)^{\otimes n^2} \rightarrow \ell^2(\mathbb{Z}_+)^{\otimes n^2}$ given by

$$U : f_1 \otimes \dots \otimes f_{n-1} \otimes f_n \otimes f_{n+1} \otimes \dots \otimes f_{n^2} \mapsto f_1 \otimes \dots \otimes f_{n-1} \otimes f_{n+1} \otimes \dots \otimes f_{n^2} \otimes f_n.$$

Clearly, \mathcal{T} is unitary equivalent via the operator U to $\tilde{\pi}_{F,n}$ giving the statement. \square

We conclude this section with a couple of lemmas on $*$ -representations of $\text{Pol}(\text{Mat}_n)_q$ induced from the coaction map, defined in the previous section.

Recall the coaction $\mathcal{D}_n : \text{Pol}(\text{Mat}_n)_q \rightarrow \text{Pol}(\text{Mat}_n)_q \otimes \mathbb{C}[SU_n]_q \otimes \mathbb{C}[SU_n]_q$ defined in Lemma 3 and the $*$ -homomorphism $\Pi_\varphi : \text{Pol}(\text{Mat}_n)_q \rightarrow \text{Pol}(\text{Mat}_{n-1})_q$, $\varphi \in [0, 2\pi)$, given by (10). Clearly, if ρ is a $*$ -representation of $\text{Pol}(\text{Mat}_{n-1})_q$, τ is a $*$ -representation of $\text{Pol}(\text{Mat}_n)_q$, and π_1, π_2 are $*$ -representations of $\mathbb{C}[SU_n]_q$ then $\rho \circ \Pi_\varphi$ and $(\tau \otimes \pi_1 \otimes \pi_2) \circ \mathcal{D}_n$ are $*$ -representations of $\text{Pol}(\text{Mat}_n)_q$.

Lemma 8. *Given $*$ -representations π_1, π_2 of $\mathbb{C}[SU_n]_q$, the $*$ -representation $(\pi_{F,n} \otimes \pi_1 \otimes \pi_2) \circ \mathcal{D}_n$ of $\text{Pol}(\text{Mat}_n)_q$ is a direct sum $\oplus_i \pi_{F,n}$ of copies of the Fock representation. In particular, $\|(\pi_{F,n} \otimes \pi_1 \otimes \pi_2) \circ \mathcal{D}_n(a)\| \leq \|\pi_{F,n}(a)\|$ for any $a \in \text{Pol}(\text{Mat}_n)_q$.*

Proof. Let $\{f_i\}_{i \in I}, \{g_j\}_{j \in J}$ be orthonormal bases for the representation spaces H_{π_1} and H_{π_2} respectively and let v_0 denote a vacuum vector for $\pi_{F,n}$. Recall that $\mathbb{C}[\text{Mat}_n]_q$ stands for the subalgebra of $\text{Pol}(\text{Mat}_n)_q$ generated by the holomorphic generators $z_l^k, k, l = 1, \dots, n$. We have that each $v_0 \otimes f_i \otimes g_j, i \in I, j \in J$, is a vacuum vector for $\tau := (\pi_{F,n} \otimes \pi_1 \otimes \pi_2) \circ \mathcal{D}_n$. Moreover, as $\pi_{F,n}(a)v_0 \perp v_0$ for any $a \in \mathbb{C}[\text{Mat}_n]_q$ with $\text{deg } a > 0$, one can easily see that $v_0 \otimes f_k \otimes g_l$ is orthogonal to $\text{span}\{\tau(a)(v_0 \otimes f_i \otimes g_j) : a \in \mathbb{C}[\text{Mat}_n]_q\}$ whenever $(i, j) \neq (k, l)$. As the latter subspace is invariant with respect to $\tau(a), a \in \text{Pol}(\text{Mat}_n)_q$, we have

$$\text{span}\{\tau(a)(v_0 \otimes f_i \otimes g_j) : a \in \mathbb{C}[\text{Mat}_n]_q\} = \text{span}\{\tau(a)(v_0 \otimes f_i \otimes g_j) : a \in \text{Pol}(\text{Mat}_n)_q\}$$

and the subspaces

$$\text{span}\{\tau(a)(v_0 \otimes f_i \otimes g_j) : a \in \text{Pol}(\text{Mat}_n)_q\} \text{ and } \text{span}\{\tau(a)(v_0 \otimes f_k \otimes g_l) : a \in \text{Pol}(\text{Mat}_n)_q\}$$

are orthogonal whenever $(i, j) \neq (k, l)$. This implies the statement. \square

Let $w = s_{n-1} \dots s_1 \in S_n$ and let π_w denote the irreducible representation of $\mathbb{C}[SU_n]_q$ corresponding to w .

Lemma 9. *The coherent $*$ -representation ρ_φ^n is unitary equivalent to a sub-representation of $\tau_{\varphi,w,w} := ((\pi_{F,n-1} \circ \Pi_\varphi) \otimes \pi_w \otimes \pi_w) \circ \mathcal{D}_n$.*

Proof. It is enough to prove that $\tau_{\varphi,w,w}$ possesses a vector Ω such that $\tau_{\varphi,w,w}(z_j^i)^* \Omega = 0$ if $(i, j) \neq (1, 1)$ and $\tau_{\varphi,w,w}(z_1^1)^* \Omega = e^{-i\varphi} \Omega$.

The representation $\tau_{\varphi,w,w}$ acts on $H_{F,n-1} \otimes \ell^2(\mathbb{Z}_+)^{\otimes(n-1)} \otimes \ell^2(\mathbb{Z}_+)^{\otimes(n-1)}$. Let $e_0^{(n-1)} = \underbrace{e_0 \otimes \dots \otimes e_0}_{n-1}$ and $\Omega = v_0 \otimes e_0^{(n-1)} \otimes e_0^{(n-1)}$, where v_0 is a vacuum vector for $\pi_{F,n-1}$. Then

$$\tau_{\varphi,w,w}(z_1^1)^* \Omega = \sum_{a,b=1}^n \pi_{F,n-1}(\Pi_\varphi(z_b^a))^* v_0 \otimes \pi_w(t_{b,1}^*) e_0^{(n-1)} \otimes \pi_w(t_{a,1}^*) e_0^{(n-1)}.$$

It follows from the definition of the Fock representation and the $*$ -homomorphism Π_φ that $\pi_{F,n-1}(\Pi_\varphi(z_a^b))^* v_0 = 0$ whenever $(a, b) \neq (n, n)$ and $\pi_{F,n-1}(\Pi_\varphi(z_n^n))^* v_0 = e^{-i\varphi} v_0$. As

$$\pi_w(t_{n,i}^*) e_0^{(n-1)} = \sum_{k_1, \dots, k_{n-2}=1}^n \pi_{s_{n-1}}(t_{n,k_1}^*) e_0 \otimes \pi_{s_{n-2}}(t_{k_1,k_2}^*) e_0 \otimes \dots \otimes \pi_{s_1}(t_{k_{n-2},i}^*) e_0,$$

$\pi_{s_{k-1}}(t_{k,l}^*)e_0 \neq 0$ if and only if $l = k - 1$ and $\pi_{s_{k-1}}(t_{k,k-1}^*)e_0 = -e_0$, we obtain

$$\pi_w(t_{n,1}^*)e_0^{(n-1)} = \pi_{s_{n-1}}(t_{n,n-1}^*)e_0 \otimes \pi_{s_{n-2}}(t_{n-1,n-2}^*)e_0 \otimes \dots \otimes \pi_{s_1}(t_{2,1}^*)e_0 = (-1)^{n-1}e_0^{(n-1)}$$

and $\pi_w(t_{n,i}^*)e_0^{(n-1)} = 0$ if $i > 1$.

Hence

$$\tau_{\varphi,\omega}(z_1^1)^*\Omega = e^{-i\varphi}v_0 \otimes \pi_w(t_{n,1}^*)e_0^{(n-1)} \otimes \pi_w(t_{n,1}^*)e_0^{(n-1)} = e^{-i\varphi}\Omega.$$

Similarly

$$\tau_{\varphi,\omega}(z_i^j)^*\Omega = e^{-i\varphi}v_0 \otimes \pi_w(t_{n,i}^*)e_0^{(n-1)} \otimes \pi_w(t_{n,j}^*)e_0^{(n-1)} = 0 \text{ if } (i, j) \neq (1, 1). \quad \square$$

3. Shilov boundary

The Shilov boundary ideal is a non-commutative analog of the Shilov boundary of a compact Hausdorff space X relative to a uniform subalgebra \mathcal{A} of $C(X)$, which is, by definition, the smallest closed subset K of X such that every function in \mathcal{A} attains its maximum modulus on K . The notion goes back to the fundamental work by W. Arveson, [1], which gave birth to several directions in mathematics.

A typical “commutative” example that we should keep in mind is the algebra \mathcal{A} of holomorphic functions on the open unit ball $\mathbb{D}_n = \{z \in M_n(\mathbb{C}) : \mathbf{z}\mathbf{z}^* < 1\}$ which are continuous on its closure. The Shilov boundary of \mathbb{D}_n relative to \mathcal{A} is known to be the space of unitary n by n matrices.

To introduce the non-commutative version of the Shilov boundary recall that if V is a subspace of a C^* -algebra \mathcal{B} , $M_n(V)$ is the space of n by n matrices in V with norm induced by the C^* -norm on $M_n(\mathcal{B})$, then any linear map ϕ from V to another C^* -algebra \mathcal{C} induces a linear map $\phi^{(n)} : M_n(V) \rightarrow M_n(\mathcal{C})$ by letting

$$\phi^{(n)}((a_{i,j})_{i,j}) = (\phi(a_{i,j}))_{i,j}, (a_{i,j})_{i,j} \in M_n(V).$$

The linear map is called a complete isometry if $\phi^{(n)}$ is an isometry for any n .

Assume V contains the identity of \mathcal{B} and generates \mathcal{B} as a C^* -algebra. The following definition was given by Arveson [1].

Definition 1. A closed two-sided ideal J in \mathcal{B} is called a *boundary ideal* for V if the canonical quotient map $q : \mathcal{B} \rightarrow \mathcal{B}/J$ is a complete isometry when restricted to V . A boundary ideal is called a *Shilov boundary* or a *Shilov boundary ideal* for V if it contains every other boundary ideal.

Arveson demonstrated the existence of the Shilov boundary in several situations of particular interests. In [9] Hamana proved that the boundary always exists for any such

subspace V . Another proof using dilation arguments was given by Ditschel and McCullough in [7] (see also [2]). As the operator space structure on commutative C^* -algebras is minimal one has that a closed subset K of a compact Hausdorff space X is the Shilov boundary relative to a uniform subalgebra of $C(X)$ if and only if the ideal $J = \{f \in C(X) : f|_K = 0\}$ is the Shilov boundary ideal. This shows that the above definition indeed generalizes the commutative notion.

If J is the Shilov ideal for a unital subalgebra V of $C^*(V)$, then $C^*(V)/J$ provides a realization of the C^* -envelope $C_e^*(V)$ of V , a C^* -algebra which is determined by the property: there exists a completely isometric representation $\gamma : V \rightarrow C_e^*(V)$ such that $C_e^*(V) = C^*(\gamma(V))$ and if ρ is any other completely isometric representation, then there exists an onto representation $\pi : C^*(\rho(V)) \rightarrow C^*(\gamma(V))$ such that $\pi(\rho(a)) = \gamma(a)$ for all $a \in V$.

In this section we shall describe the Shilov boundary ideal for the closed subalgebra of $C_F(\overline{\mathbb{D}}_n)_q$ generated by the “holomorphic” generators $\pi_{F,n}(z_j^i)$, $i, j = 1, \dots, n$.

In $\text{Pol}(\text{Mat}_n)_q$ consider the two-sided ideal J_n generated by

$$\sum_{j=1}^n q^{2n-\alpha-\beta} z_j^\alpha (z_j^\beta)^* - \delta^{\alpha\beta}, \alpha, \beta = 1, \dots, n,$$

where $\delta^{\alpha\beta}$ is the Kronecker symbol. The ideal J_n is a $*$ -ideal, i.e. $J_n = J_n^*$. The quotient algebra $\text{Pol}(S(\mathbb{D}_n))_q := \text{Pol}(\text{Mat}_n)_q/J_n$ is a $U_q\mathfrak{su}_{n,n}$ -module $*$ -algebra called the polynomial algebra on the Shilov boundary of a quantum matrix ball. The canonical homomorphism

$$j_q : \text{Pol}(\text{Mat}_n)_q \rightarrow \text{Pol}(S(\mathbb{D}_n))_q$$

is a q -analog of the restriction operator which maps a polynomial on the ball $\mathbb{D}_n = \{\mathbf{z} \in \text{Mat}_n : \mathbf{z}\mathbf{z}^* < 1\}$ to its restriction to the Shilov boundary $S(\mathbb{D}_n) = \{\mathbf{z} \in \text{Mat}_n : \mathbf{z}\mathbf{z}^* = 1\}$.

The $*$ -algebra $\text{Pol}(S(\mathbb{D}_n))_q$ was introduced by L. Vaksman in [23] and shown to be isomorphic to the $*$ -algebra $(\mathbb{C}[GL_n]_q, *) \simeq \mathbb{C}[U_n]_q$ introduced in section 2.1; the isomorphism $\Psi : \text{Pol}(S(\mathbb{D}_n))_q \rightarrow (\mathbb{C}[GL_n]_q, *)$ is given by $z_j^i + J_n \rightarrow z_j^i$, $i, j = 1, \dots, n$ (see [23, Theorem 2.2, Proposition 6.1]). The author of [23] used an algebraic approach to introduce the q -analog of the Shilov boundary and posed a question whether this notion would coincide with the “analytic” Shilov boundary of Arveson. In this section we shall give an affirmative answer to that question for general value of n .

Let $A(\mathbb{D}_n)_q$ be the closed (non-involutive) subalgebra of $C_F(\overline{\mathbb{D}}_n)_q$ generated by $\pi_{F,n}(z_j^i)$, $i, j = 1, \dots, n$. Let \bar{J}_n be the closure of J_n in $C_F(\overline{\mathbb{D}}_n)_q$ and write j_q also for the canonical quotient map $C_F(\overline{\mathbb{D}}_n)_q \rightarrow C_F(\overline{\mathbb{D}}_n)_q/\bar{J}_n$.

We are now ready to state the main theorems of the paper.

Theorem 3. *The ideal \bar{J}_n is a boundary ideal for $A(\mathbb{D}_n)_q$.*

Theorem 4. *The ideal \bar{J}_n is the Shilov boundary ideal for $A(\mathbb{D}_n)_q$.*

We begin by proving several auxiliary lemmas.

Lemma 10. *Let τ be a $*$ -representation of $\text{Pol}(\text{Mat}_{n-1})_q$ that annihilates the ideal J_{n-1} of $\text{Pol}(\text{Mat}_{n-1})_q$. Then $((\tau \circ \Pi_\varphi) \otimes \pi_1 \otimes \pi_2) \circ \mathcal{D}_n$ is a $*$ -representation of $\text{Pol}(\text{Mat}_n)_q$ that annihilates the ideal J_n of $\text{Pol}(\text{Mat}_n)_q$ for any $*$ -representations π_1, π_2 of $\mathbb{C}[SU_n]_q$.*

Proof. Write $\Phi_n : \text{Pol}(\text{Mat}_n)_q \rightarrow \mathbb{C}[U_n]_q$ for the $*$ -homomorphism given by

$$\Phi_n : z_j^i \mapsto q^{i-n} z_j^i, \quad i, j = 1, \dots, n,$$

(see Theorem 1 and the remark after it). It is straightforward to check that

$$\Phi_{n-1} \circ \Pi_\varphi = \Psi_\varphi \circ \Phi_n, \quad \varphi \in [0, 2\pi],$$

where $\Psi_\varphi : \mathbb{C}[U_n]_q \rightarrow \mathbb{C}[U_{n-1}]_q$ is the $*$ -homomorphism such that

$$\Psi_\varphi(z_j^i) = \begin{cases} z_j^i, & i, j < n, \\ e^{i\varphi}, & i = j = n, \\ 0, & \text{otherwise.} \end{cases}$$

Therefore, as $\ker \Phi_n = J_n$, we have $\Pi_\varphi(J_n) \subset J_{n-1}$, giving that $\tau \circ \Pi_\varphi$ annihilates the ideal J_n whenever τ is a $*$ -representation of $\text{Pol}(\text{Mat}_{n-1})_q$ such that $\tau(J_{n-1}) = 0$.

Next we observe that if $\Upsilon : \mathbb{C}[U_n]_q \rightarrow \mathbb{C}[SU_n]_q$ is the canonical $*$ -homomorphism given by $\Upsilon : z_j^i \mapsto t_{i,j}$, then, for any $a \in \text{Pol}(\text{Mat}_n)_q$,

$$(\Upsilon \otimes \text{id} \otimes \Upsilon) \circ (\Delta \otimes \text{id}) \circ \Delta \circ \Phi_n(a) = (\sigma \otimes \text{id}) \circ (\text{id} \otimes \sigma) \circ (\text{id} \otimes \text{id} \otimes \theta) \circ (\Phi_n \otimes \text{id} \otimes \text{id}) \circ \mathcal{D}_n(a),$$

where σ is the flip map that sends $a \otimes b$ to $b \otimes a$, Δ is the comultiplication on $\mathbb{C}[U_n]_q$ and $\theta : \mathbb{C}[SU_n]_q \rightarrow \mathbb{C}[SU_n]_q$ is the $*$ -automorphism defined by (18). Hence, $(\Phi_n \otimes \text{id} \otimes \text{id}) \circ \mathcal{D}_n(J_n) = 0$. It is now immediate that if ρ is a $*$ -representation of $\text{Pol}(\text{Mat}_n)_q$ that annihilates J_n , then $(\rho \otimes \pi_1 \otimes \pi_2) \circ \mathcal{D}_n(J_n) = 0$ and, by the first part of the proof, $((\tau \circ \Pi_\varphi) \otimes \pi_1 \otimes \pi_2) \circ \mathcal{D}_n(J_n) = 0$, for any τ, π_1, π_2 satisfying the assumptions of the lemma. \square

The dilation technique will play a crucial role in the rest of the paper. Recall that if V is a vector space and $\phi_i : V \rightarrow B(H_i), i = 1, 2$, are linear maps then ϕ_2 is said to be a *dilation* of ϕ_1 on V and write $\phi_1 \prec \phi_2$ if $H_1 \subset H_2$ and $\phi_1(a) = P_{H_1} \phi_2(a)|_{H_1}$ for $a \in V$. Clearly, the relation \prec on V is transitive.

The next statement shows that the Fock representation is a dilation of a “sum” of coherent representations when considered as maps on $\mathbb{C}[\text{Mat}_n]_q$.

Lemma 11. *There is a $*$ -representation Ψ of $\text{Pol}(\text{Mat}_n)_q$ such that Ψ is a direct integral of coherent representations ρ_φ^n and $\pi_{F,n} \prec \Psi$ on $\mathbb{C}[\text{Mat}_n]_q$.*

Proof. Let S and C_q be the shift and the diagonal operators on $\ell^2(\mathbb{Z}_+)$ given by (22). By Lemma 7,

$$\pi_{F,n}(z_1^1) = B \otimes C_q S + A_{11} \otimes 1, \quad \pi_{F,n}(z_j^i) = A_{ij} \otimes 1, \quad (i, j) \neq (1, 1),$$

for some $A_{ij}, B \in B(\ell^2(\mathbb{Z}_+)^{\otimes(n^2-1)})$, while the images under the coherent representations are:

$$\rho_\varphi^n(z_1^1) = (-1)^{n-1} e^{i\varphi} B + A_{11}, \quad \rho_\varphi^n(z_j^i) = A_{ij} \quad (i, j) \neq (1, 1).$$

As $C_q S$ is a contraction, by Sz.-Nagy’s theorem (see e.g. [15]), there exists a unitary operator U on a larger space containing $\ell^2(\mathbb{Z}_+)$ such that $(C_q S)^k = P_{\ell^2(\mathbb{Z}_+)} U^k|_{\ell^2(\mathbb{Z}_+)}$ for all $k \in \mathbb{N}$. Let

$$\Psi(z_1^1) = B \otimes U + A_{11} \otimes 1, \quad \Psi(z_j^i) = A_{ij} \otimes 1 \text{ if } (i, j) \neq (1, 1).$$

Clearly, $\pi_{F,n} \prec \Psi$ on $\mathbb{C}[\text{Mat}_n]_q$ and Ψ is a $*$ -representation of $\text{Pol}(\text{Mat}_n)_q$ which is a direct integral of those ρ_φ^n such that $(-1)^{n-1} e^{i\varphi}$ is in the spectrum of U . \square

Lemma 12.

1. Any $*$ -representation of $\text{Pol}(\text{Mat}_n)_q$ that annihilates the ideal J_n is a direct integral of $*$ -representations given by $z_l^k \mapsto e^{i\varphi_k} q^{k-n} \rho(t_{k,l})$, $k, l = 1, \dots, n$, where ρ is a $*$ -representation of $\mathbb{C}[SU_n]_q$ and $\varphi_k \in [0, 2\pi)$.
2. If π is a $*$ -representation of $\text{Pol}(\text{Mat}_n)_q$ such that $\pi(J_n) = 0$ then $\|\pi(a)\| \leq \|\pi_{F,n}(a)\|$, $a \in \text{Pol}(\text{Mat}_n)_q$, and

$$\|j_q^{(k)}((\pi_{F,n}(a_{i,j}))_{i,j})\| = \sup\{\|(\pi(a_{i,j}))_{i,j}\| : \pi \in \text{Rep}(\text{Pol}(\text{Mat}_n)_q), \pi(J_n) = 0\} \quad (36)$$

for any $k \in \mathbb{N}$ and $(a_{i,j})_{i,j} \in M_k(\text{Pol}(\text{Mat}_n)_q)$.

Proof. 1. Let π be a $*$ -representation of $\text{Pol}(\text{Mat}_n)_q$ that annihilates J_n . By [23, Proposition 6.1, Theorem 2.2], the family $\{\pi(z_j^i) : i, j = 1, \dots, n\}$ determines a $*$ -representation of $(\mathbb{C}[GL_n]_q, *)$. Since $\det_q \mathbf{z}$ is central in $(\mathbb{C}[GL_n]_q, *)$ and satisfies $\det_q \mathbf{z}(\det_q \mathbf{z})^* = q^{-n(n-1)}$ (see (9)), by the spectral theorem

$$\pi(\det_q \mathbf{z}) = \int_{[0,2\pi]}^\oplus e^{i\varphi} q^{-n(n-1)/2} I_\varphi d\mu(\varphi)$$

and

$$\pi = \int_{[0,2\pi]}^\oplus \pi_\varphi d\mu(\varphi),$$

where $\{\pi_\varphi : \varphi \in [0, 2\pi]\}$ is a field of $*$ -representations of $\text{Pol}(\text{Mat}_n)_q$ such that $\pi_\varphi(\det_q \mathbf{z}) = e^{i\varphi} q^{-n(n-1)/2} I_\varphi$ with I_φ being the identity operator on the representation space of π_φ .

Fix now $\varphi \in [0, 2\pi]$ and let $\iota : (\mathbb{C}[GL_n]_q, *) \rightarrow \mathbb{C}[U_n]_q$ be the $*$ -isomorphism given by $\iota(z_l^k) = e^{i\varphi_k} q^{k-n} z_l^k$, $k, l = 1, \dots, n$, where $\varphi_1 + \dots + \varphi_n = \varphi$. Then $\pi_\varphi \circ \iota^{-1}$ is a $*$ -representation of $\mathbb{C}[U_n]_q$ such that $\pi_\varphi \circ \iota^{-1}(\det_q \mathbf{z}) = I$ and hence $\rho_\varphi := \pi_\varphi \circ \iota^{-1} \circ j^{-1}$ is a $*$ -representation of $\mathbb{C}[SU_n]_q \simeq^j \mathbb{C}[U_n]_q / \langle \det_q \mathbf{z} - 1 \rangle$, where $j(z_l^k) = t_{k,l}$, $k, l = 1, \dots, n$. We obtain

$$\pi_\varphi(z_l^k) = \rho_\varphi \circ j \circ \iota(z_l^k) = e^{i\varphi_k} q^{k-n} \rho_\varphi(t_{k,l}), k, l = 1, \dots, n.$$

2. Let χ_φ , $\varphi = (\varphi_1, \dots, \varphi_n)$, be the one dimensional representation of $\text{Pol}(\text{Mat}_n)_q$ defined in Lemma 6. By the lemma the mapping $\psi : \pi_{F,n}(a) \mapsto \chi_\varphi(a)$, $a \in \text{Pol}(\text{Mat}_n)_q$ extends to a $*$ -homomorphism from $C_F(\mathbb{D}_n)_q$ to \mathbb{C} . Given representations π_1, π_2 of $\mathbb{C}[SU_n]_q$ and $a \in \text{Pol}(\text{Mat}_n)_q$, by Lemma 8, we obtain

$$\begin{aligned} \|(\chi_\varphi \otimes \pi_1 \otimes \pi_2) \circ \mathcal{D}_n(a)\| &= \|(\psi \otimes \text{id} \otimes \text{id})((\pi_{F,n} \otimes \pi_1 \otimes \pi_2) \circ \mathcal{D}_n(a))\| \quad (37) \\ &\leq \|(\pi_{F,n} \otimes \pi_1 \otimes \pi_2) \circ \mathcal{D}_n(a)\| \leq \|\pi_{F,n}(a)\|. \end{aligned}$$

If π_2 is the one-dimensional representation given by $\pi_2(t_{k,l}) = \delta_{kl}$, $k, l = 1, \dots, n$, then

$$(\chi_\varphi \otimes \pi_1 \otimes \pi_2) \circ \mathcal{D}_n(z_l^k) = \sum_{a,b=1}^n \chi_\varphi(z_b^a) \otimes \pi_1(t_{b,l}) \otimes \pi_2(t_{a,k}) = e^{i\varphi_k} q^{k-n} \pi_1(t_{k,l}).$$

Hence, applying the first statement of the lemma and (37) we get

$$\|\pi(a)\| \leq \|\pi_{F,n}(a)\|, a \in \text{Pol}(\text{Mat}_n)_q$$

for any $*$ -representation π of $\text{Pol}(\text{Mat}_n)_q$ such that $\pi(J_n) = 0$.

The equality (36) holds by the fact that $\|j_q^{(k)}((\pi_{F,n}(a_{i,j}))_{i,j})\|$ is the supremum over $\|(\pi(a_{i,j}))_{i,j}\|$, where π runs over all $*$ -representations of $\text{Pol}(\text{Mat}_n)_q$ that annihilate the ideal J_n and such that $\|\pi(x)\| \leq \|\pi_{F,n}(x)\|$, $x \in \text{Pol}(\text{Mat}_n)_q$. \square

We are now in a position to prove the main theorems.

Proof of Theorem 3. Since j_q is a $*$ -homomorphism between C^* -algebras, it is a complete contraction. To see that j_q is a complete isometry when restricted to $A(\mathbb{D}_n)_q$ it is enough to prove that

$$\|(\pi_{F,n}(a_{i,j}))_{i,j}\| \leq \|j_q^{(k)}((\pi_{F,n}(a_{i,j}))_{i,j})\|$$

for any $(a_{i,j})_{i,j} \in M_k(A(\mathbb{D}_n)_q)$.

The strategy is to find a $*$ -representation $\Pi : \text{Pol}(\text{Mat}_n)_q \rightarrow B(K)$, $K \supset H_{F,n}$ such that $\Pi(J_n) = 0$ and

$$\pi_{F,n}(a) = P_{H_{F,n}} \Pi(a)|_{H_{F,n}}, a \in \mathbb{C}[\text{Mat}_n]_q, \tag{38}$$

i.e. $\pi_{F,n} \prec \Pi$ when considered as maps on $\mathbb{C}[\text{Mat}_n]_q$. As in this case

$$\|(\pi_{F,n}(a_{i,j}))_{i,j}\| \leq \|(\Pi(a_{i,j}))_{i,j}\|, (a_{i,j})_{i,j} \in M_k(\mathbb{C}[\text{Mat}_n]_q), k \in \mathbb{N},$$

Lemma 12 would give immediately the statement.

We proceed by induction. If $n = 1$ this was proved in [24]. For the reader’s convenience we reproduce the arguments. We have that $\text{Pol}(\mathbb{C})_q$ is generated by a single element z subject to the relation $z^*z = q^2zz^* + (1 - q^2)$ and $\pi_{F,1}(z) = C_q S$, a contraction (see e.g. the proof of Lemma 6). By Sz.-Nagy’s theorem there exist a Hilbert space $K \supset H_{F,1}$ and a unitary operator $U \in B(K)$ such that $\pi_{F,1}(p(z)) = P_{H_{F,1}} p(U)|_{H_{F,1}}$ for all holomorphic polynomials p . As the map $z \mapsto U$ extends to a $*$ -representation of $\text{Pol}(\mathbb{C})_q$ that annihilates the ideal $J_1 = \langle zz^* - 1 \rangle$, we obtain a necessary dilation.

Assume (38) holds for some $n \geq 1$. By Lemma 11 there exists a $*$ -representation Ψ of $\text{Pol}(\text{Mat}_{n+1})_q$, which is a direct integral of coherent representations ρ_φ^{n+1} and such that $\pi_{F,n+1} \prec \Psi$ on $\mathbb{C}[\text{Mat}_{n+1}]_q$.

By the remark after Lemma 9, ρ_φ^{n+1} is a $*$ -subrepresentation of $\tau_{\varphi,w,w}$ and hence $\rho_\varphi^{n+1}(a) = P_L \tau_{\varphi,w,w}(a)|_L$, $a \in \text{Pol}(\text{Mat}_{n+1})_q$, for a subspace L .

As $\tau_{\varphi,w,w} = ((\pi_{F,n} \circ \Pi_\varphi) \otimes \pi_w \otimes \pi_w) \circ \mathcal{D}_{n+1}$ and by induction $\pi_{F,n} \prec \Pi$ on $\mathbb{C}[\text{Mat}_n]_q$ with $\Pi(J_n) = 0$ we obtain

$$\tau_{\varphi,w,w} \prec ((\Pi \circ \Pi_\varphi) \otimes \pi_w \otimes \pi_w) \circ \mathcal{D}_{n+1} \text{ on } \mathbb{C}[\text{Mat}_{n+1}]_q.$$

Finally, by Lemma 10 $((\Pi \circ \Pi_\varphi) \otimes \pi_w \otimes \pi_w) \circ \mathcal{D}_{n+1}$ annihilates the ideal J_{n+1} of $\text{Pol}(\text{Mat}_{n+1})_q$.

Combining all these steps and using transitivity of the relation \prec we obtain the desired statement. \square

Proof of Theorem 4. Assume that I is a boundary ideal for $A(\mathbb{D}_n)_q$ with $I \supset \bar{J}_n$ and identify $\text{Pol}(\text{Mat}_n)_q$ with its image under the Fock representation. Let $a \in \mathbb{C}[\text{Mat}_n]_q \subset \text{Pol}(\text{Mat}_n)_q$ be a polynomial in “holomorphic” generators z_j^i , $1 \leq i, j \leq n$.

By assumption,

$$\|a + I\| = \|a\| = \|a + \bar{J}_n\|. \tag{39}$$

Let $x \in \text{Pol}(\text{Mat}_n)_q$. As, by (8) and (9),

$$(z_j^i)^* + J_n = (-q)^{i+j-2n} (\det_q \mathbf{z})^{-1} \det_q \mathbf{z}_j^i + J_n,$$

$\det_q \mathbf{z} + J_n$ is a central element in $\text{Pol}(\text{Mat}_n)_q/J_n$ and

$$(\det_q \mathbf{z})^* \det_q \mathbf{z} + J_n = q^{-n(n-1)} + J_n,$$

there exist $k \in \mathbb{Z}_+$ and $a \in \mathbb{C}[\text{Mat}_n]_q$ such that $x + \bar{J}_n = (\det_q \mathbf{z})^{-k} a + \bar{J}_n$. Hence, by (39) and the fact that $I \supset \bar{J}_n$, we obtain

$$\begin{aligned} \|x + \bar{J}_n\|^2 &= \|(x^* + \bar{J}_n)(x + \bar{J}_n)\| \\ &= \|a^* ((\det_q \mathbf{z})^{-k})^* (\det_q \mathbf{z})^{-k} a + \bar{J}_n\| \\ &= \|a^* q^{kn(n-1)} a + \bar{J}_n\| = \|q^{kn(n-1)/2} a + \bar{J}_n\|^2 \\ &= \|q^{kn(n-1)/2} a + I\|^2 = \|a^* q^{kn(n-1)} a + I\| \\ &= \|a^* ((\det_q \mathbf{z})^{-k})^* (\det_q \mathbf{z})^{-k} a + I\| \\ &= \|x + I\|^2. \end{aligned}$$

This implies that $C_F(\overline{\mathbb{D}}_n)_q/\bar{J}_n = C_F(\overline{\mathbb{D}}_n)_q/I$ and hence $\bar{J}_n = I$. \square

Let $C(U_n)_q$ be the C^* -enveloping algebra of $\mathbb{C}[U_n]_q$. As the matrix $(z_j^i)_{i,j}$ formed by the generators of $\mathbb{C}[U_n]_q$ is unitary one has that the norm of each generator is not larger than 1 in each $*$ -representation by bounded operators on a Hilbert space and hence the C^* -enveloping algebra is well-defined.

Corollary 3. *The C^* -envelope $C_e^*(A(\mathbb{D}_n)_q)$ is isomorphic to $C(U_n)_q$.*

Proof. Let $\psi : \text{Pol}(\text{Mat}_n)_q \rightarrow (\mathbb{C}[GL_n]_q, *)$ be the surjective $*$ -homomorphism from Theorem 1 and $\iota : (\mathbb{C}[GL_n]_q, *) \rightarrow \mathbb{C}[U_n]_q$ the $*$ -isomorphism given by $\iota(z_l^k) = q^{k-n} z_l^k$, $k, l = 1, \dots, n$. As $\ker \psi = J_n$, any $*$ -representation of $\text{Pol}(\text{Mat}_n)_q$ such that $\pi(J_n) = 0$ is given by $\pi(a) = \rho(\iota \circ \psi(a))$, $a \in \text{Pol}(\text{Mat}_n)_q$, for some $*$ -representation ρ of $\mathbb{C}[U_n]_q$. Moreover, the correspondence $\pi \leftrightarrow \rho$ is one-to-one. Consider a $*$ -representation ρ of $\mathbb{C}[U_n]_q$ such that $\overline{\rho(\mathbb{C}[U_n]_q)} \simeq C(U_n)_q$. In what follows we identify the latter two algebras. Let $\Psi : \pi_{F,n}(\text{Pol}(\text{Mat}_n)_q) \rightarrow C(U_n)_q$, $\pi_{F,n}(a) \mapsto \rho(\iota \circ \psi(a))$. By Lemma 12,

$$\|\rho(\iota \circ \psi(a))\| \leq \|\pi_{F,n}(a)\|, a \in \text{Pol}(\text{Mat}_n)_q$$

and hence Ψ extends to a surjective $*$ -homomorphism (denoted by the same letter) from $C_F(\overline{\mathbb{D}}_n)_q$ to $C(U_n)_q$. As any representation of $C(U_n)_q$ gives rise to a representation of $C_F(\overline{\mathbb{D}}_n)_q$ that annihilates the ideal J_n , we have $\ker \Psi = \bar{J}_n$ and hence

$$C_F(\overline{\mathbb{D}}_n)_q/\bar{J}_n \simeq C(U_n)_q.$$

As \bar{J}_n is the Shilov boundary ideal of $A(\mathbb{D}_n)_q$, $C_F(\overline{\mathbb{D}}_n)_q/\bar{J}_n \simeq C_e^*(A(\mathbb{D}_n)_q)$ giving the statement. \square

Acknowledgments

We would like to thank Daniil Proskurin for valuable conversations during the preparation of this paper. We are grateful to the referee for a number of suggestions that improved the exposition.

References

- [1] W. Arveson, Subalgebras of C^* -algebras, *Acta Math.* 123 (1969) 122–141.
- [2] W. Arveson, Notes on the unique extension property, unpublished, available from <http://math.berkeley.edu/~arveson/Dvi/unExt.pdf>, 2003.
- [3] G. Bergman, The diamond lemma for ring theory, *Adv. Math.* 29 (1978) 178–218.
- [4] O. Bershtein, Degenerate principal series of quantum Harish-Chandra modules, *J. Math. Phys.* 45 (10) (2004) 3800–3827.
- [5] K.A. Brown, K.R. Goodearl, *Lectures on Algebraic Quantum Groups*, Birkhäuser, 2002.
- [6] K. Davidson, *C^* -algebras by Examples*, Fields Institute Monographs, vol. 6, American Mathematical Society, Providence, RI, 1996.
- [7] M.A. Dritschel, S.A. McCullough, Boundary representations for families of representations of operator algebras and spaces, *J. Operator Theory* 53 (2005) 159–167.
- [8] O. Giselsson, The universal C^* -algebra of the quantum matrix ball and its $*$ -representations, arXiv: 1801.10608.
- [9] M. Hamana, Injective envelopes of operator systems, *Publ. RIMS Kyoto Univ.* 15 (1979) 773–785.
- [10] J.C. Jantzen, *Lectures in Quantum Groups*, Graduate Studies in Mathematics, American Mathematical Society, Providence, RI, 1996.
- [11] P.E.T. Jørgensen, L.M. Schmitt, R.F. Werner, Positive representations of general commutation relations allowing Wick ordering, *J. Funct. Anal.* 134 (1) (1995) 33–99.
- [12] A. Klimyk, K. Schmüdgen, *Quantum Groups and Their Representations*, Springer-Verlag, 1997.
- [13] H.T. Koelnik, On $*$ -representations of the Hopf $*$ -algebra associated with quantum group $U_q(n)$, *Compos. Math.* 77 (1991) 199–231.
- [14] L.I. Korogodski, Y.S. Soibelman, *Algebra of Functions on Quantum Groups: Part I*, American Mathematical Society, Providence, RI, 1998.
- [15] V. Paulsen, *Completely Bounded Maps and Operator Algebras*, Cambridge University Press, 2003, p. 78.
- [16] D. Proskurin, Yu.S. Samoilenko, Stability of the C^* -algebra associated with twisted CCR, *Algebr. Represent. Theory* 5 (4) (2002) 433–444.
- [17] D. Proskurin, L. Turowska, On the C^* -algebra associated with $\text{Pol}(\text{Mat}_{2,2})_q$, *Methods Funct. Anal. Topology* 7 (1) (2001) 88–92.
- [18] D. Proskurin, L. Turowska, Shilov boundary for “holomorphic functions” on a quantum matrix ball, *Algebr. Represent. Theory* 18 (4) (2015) 917–929.
- [19] D. Shklyarov, S. Sinelshchikov, L. Vaksman, Fock representations and quantum matrices, *Internat. J. Math.* 15 (9) (2004) 855–894.
- [20] S. Sinel'shchikov, L. Vaksman, On q -analogues of bounded symmetric domains and Dolbeault complexes, *Mat. Fiz. Anal. Geom.* 1 (1998) 75–100.
- [21] Ya.S. Soibelman, Irreducible representations of the algebra of functions on the quantum group $SU(n)$ and Schubert cells (Russian), *Dokl. Akad. Nauk SSSR* 307 (1) (1989) 41–45, translation in *Sov. Math., Dokl.* 40 (1) (1990) 34–38.
- [22] Ya.S. Soibelman, Algebra of functions on a compact quantum group and its representations (Russian), *Algebra i Analiz* 2 (1) (1990) 190–212, translation in *Leningrad Math. J.* 2 (1) (1991) 161–178.
- [23] L. Vaksman, Quantum matrix ball: the Cauchy–Szegő kernel and the Shilov boundary, *Mat. Fiz. Anal. Geom.* 8 (4) (2001) 366–384.
- [24] L. Vaksman, Maximum principle for “holomorphic functions” in the quantum ball, *Mat. Fiz. Anal. Geom.* 10 (1) (2003) 12–28.
- [25] L. Vaksman, *Quantum Bounded Symmetric Domains*, American Mathematical Society, Providence, RI, 2010.
- [26] L.L. Vaksman, Ya.S. Soibelman, Algebra of functions on the quantum group $SU(n+1)$, and odd-dimensional quantum spheres (Russian), *Algebra i Analiz* 2 (5) (1990) 101–120, translation in *Leningrad Math. J.* 2 (5) (1991) 1023–1042.

- [27] J. Wolf, The action of a real semisimple Lie group on a complex flag manifold I. Orbit structure and holomorphic arc components, *Bull. Amer. Math. Soc.* 75 (1969) 1121–1237.