

Validation and Use of PANS for Vehicle Aerodynamics and Active Flow Control

G. Minelli, B. Basara, S. Krajnović

minelli@chalmers.se



CHALMERS
UNIVERSITY OF TECHNOLOGY



15%



70%

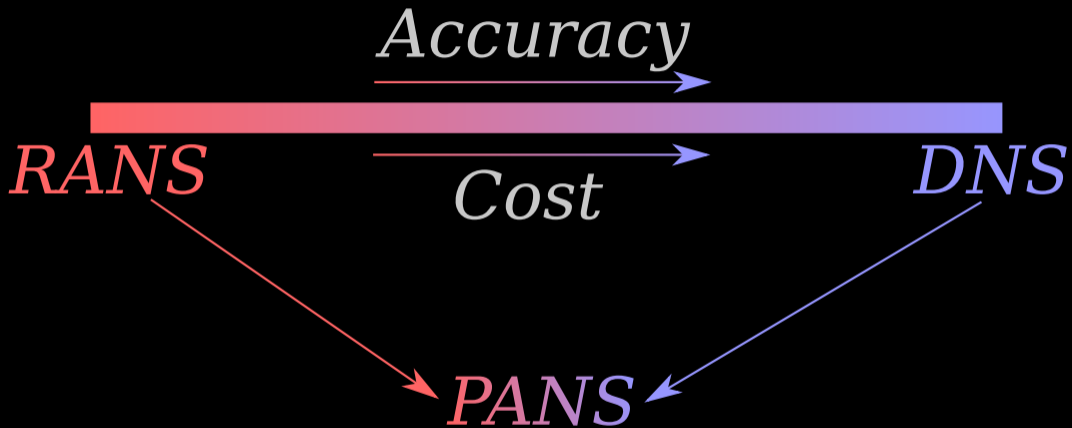


15%

60%



70%



$$f_k = \frac{1}{\sqrt{C_\mu}} \left(\frac{\Delta}{\Lambda} \right)^{\frac{2}{3}} > \frac{k_u}{k}$$

$$\sqrt[3]{\Delta_x \Delta_y \Delta_z}$$

$$\frac{k^{3/2}}{\varepsilon}$$

$$f_k = \frac{1}{\sqrt{C_\mu}} \left(\frac{\Delta}{\Lambda} \right)^{\frac{2}{3}} > \frac{\kappa u}{k}$$

$\sqrt[3]{\Delta_x \Delta_y \Delta_z}$

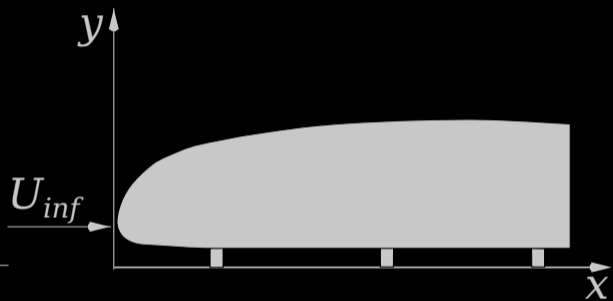
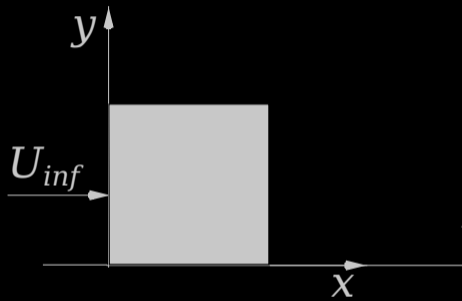
$\frac{k^{3/2}}{\varepsilon}$

1
 0

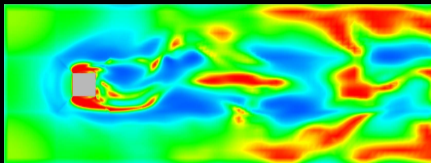
$$f_k = \frac{1}{\sqrt{C_\mu}} \left(\frac{\Delta}{\Lambda} \right)^{\frac{2}{3}} > \frac{k_\nu}{k}$$

$\sqrt[3]{\Delta_x \Delta_y \Delta_z}$

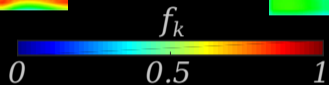
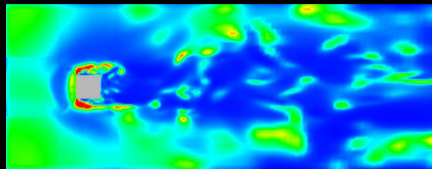
$\frac{k^{3/2}}{\epsilon}$



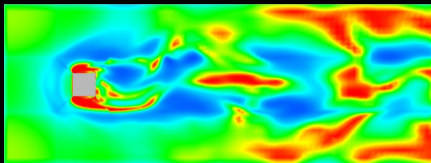
Coarse grid



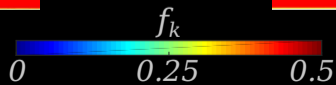
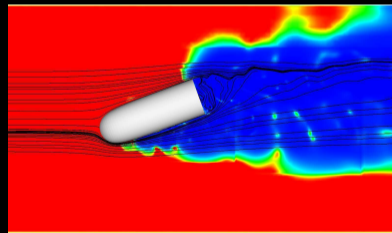
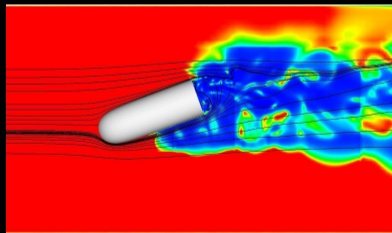
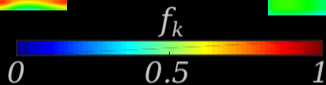
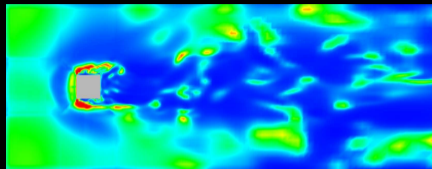
Fine grid



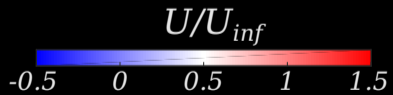
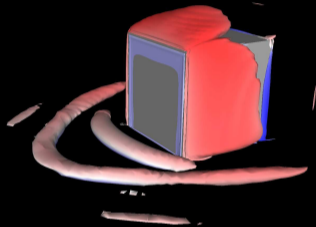
Coarse grid



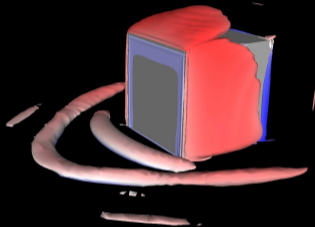
Fine grid



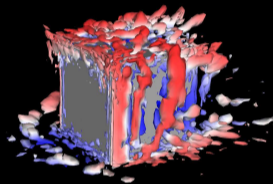
URANS



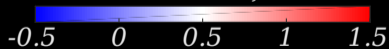
URANS



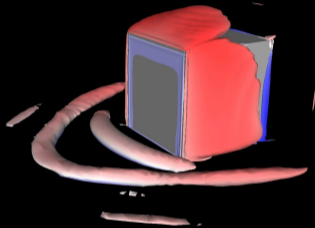
LES



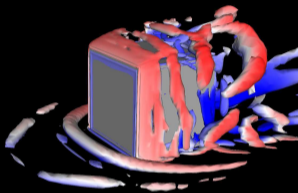
U/U_{inf}



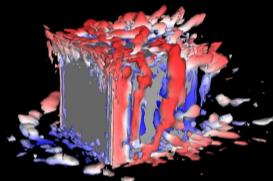
URANS



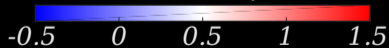
PANS

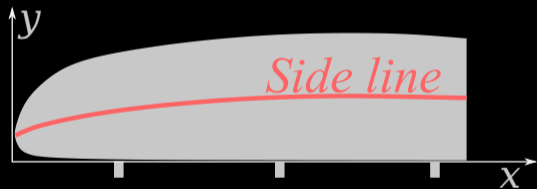
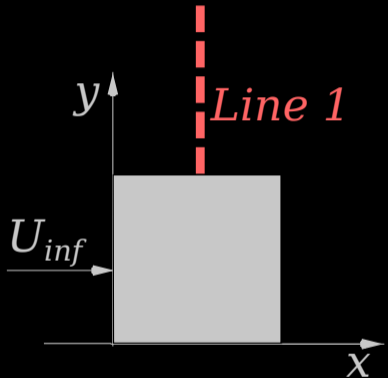


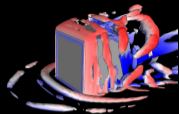
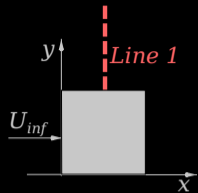
LES



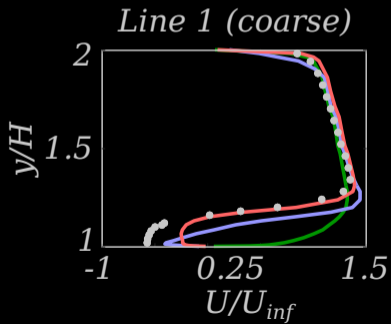
U/U_{inf}

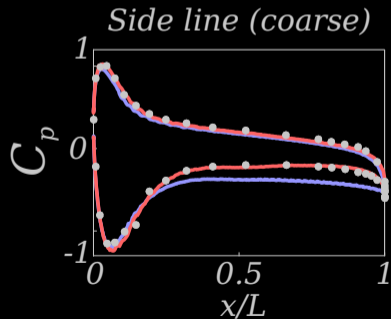
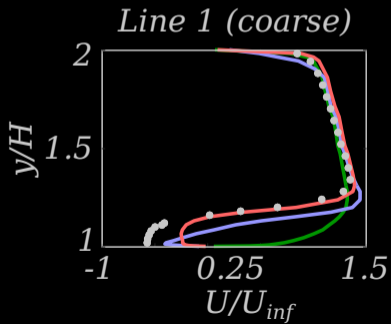
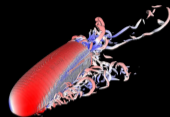
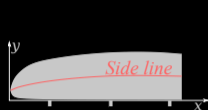
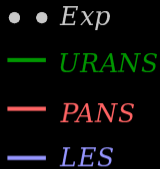
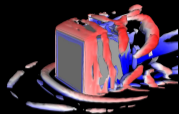
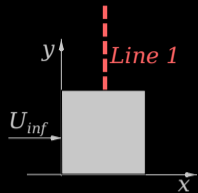






- • *Exp*
- *URANS*
- *PANS*
- *LES*

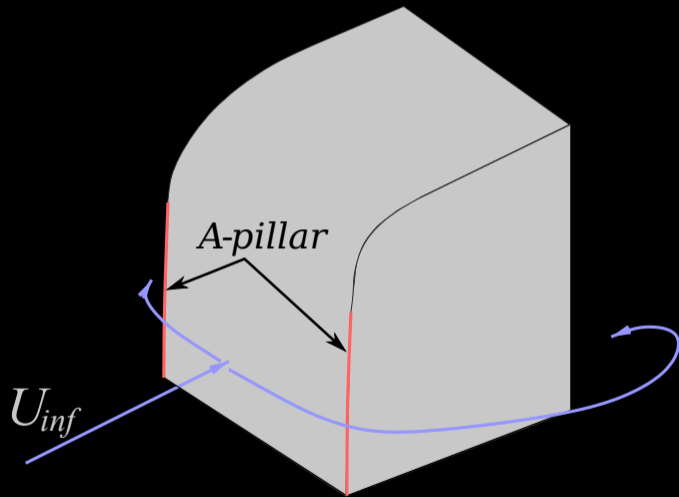


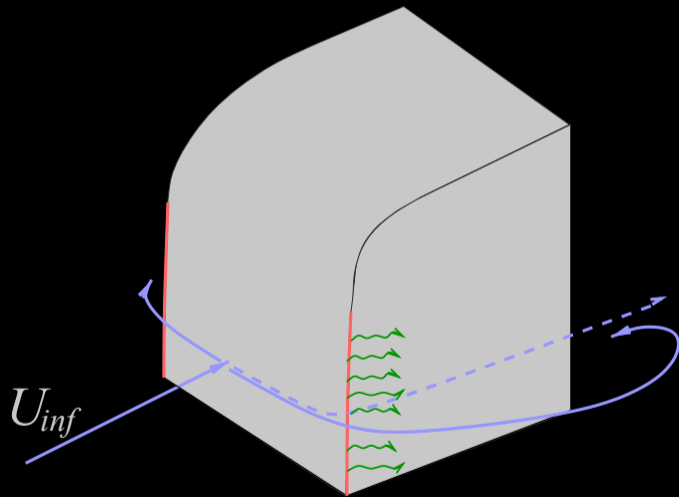


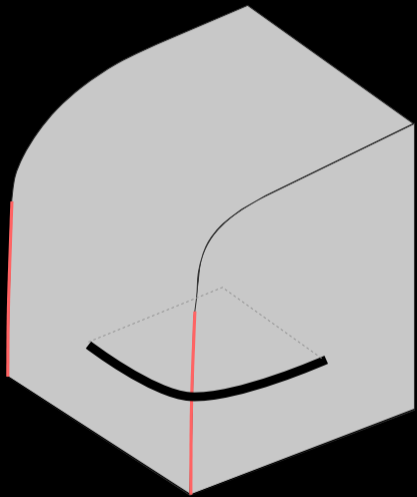


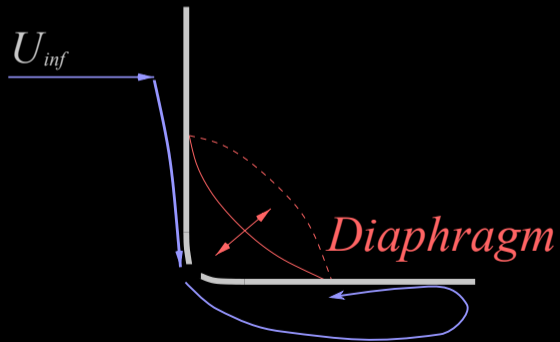
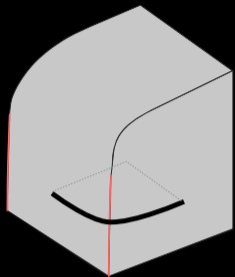


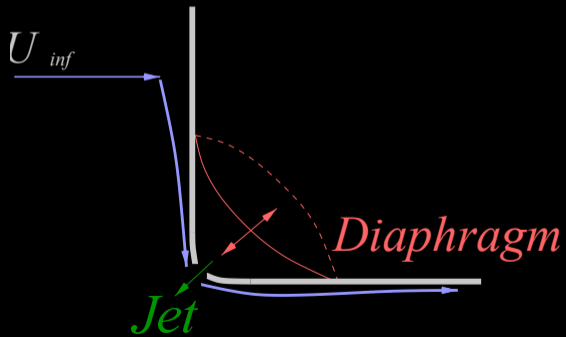
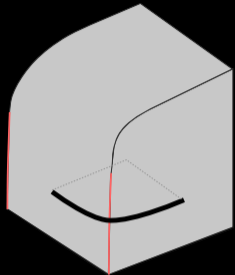
A-pillar

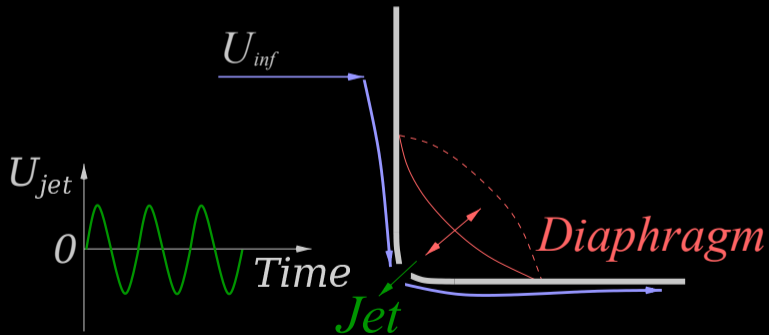
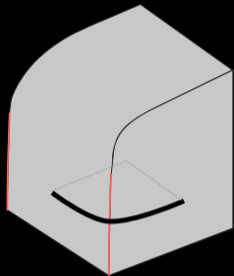


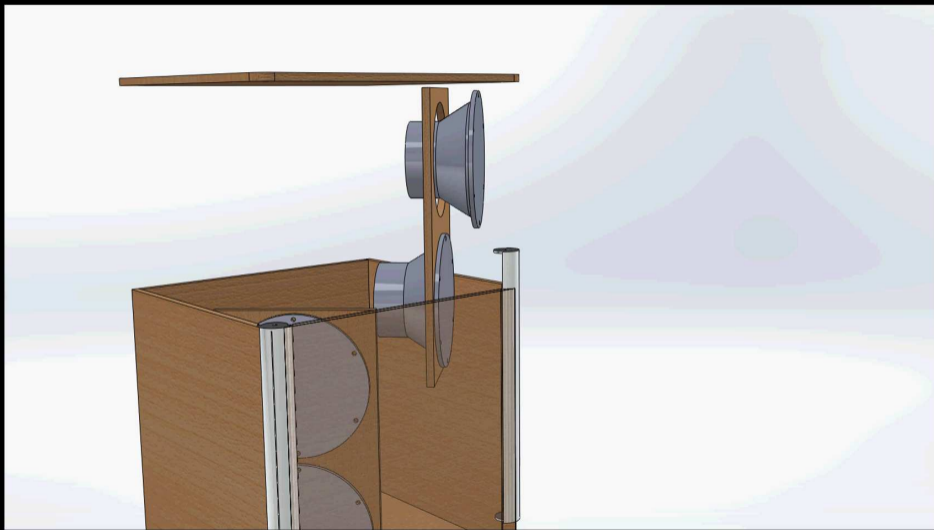


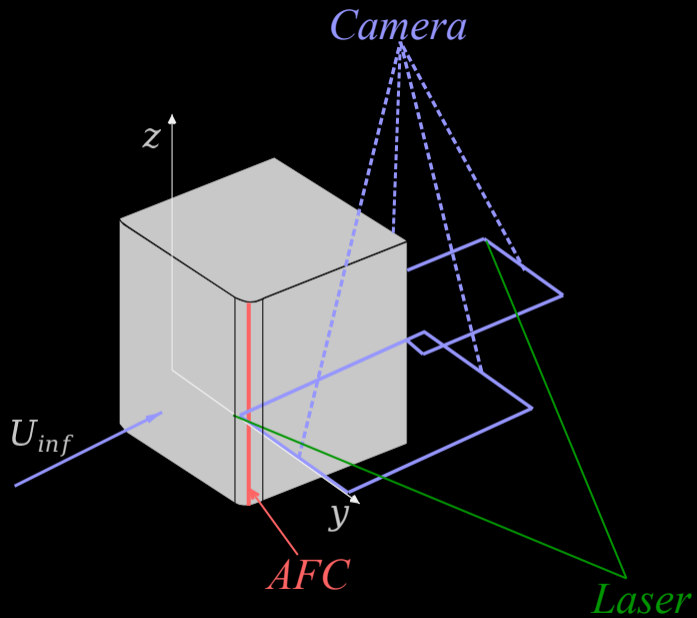


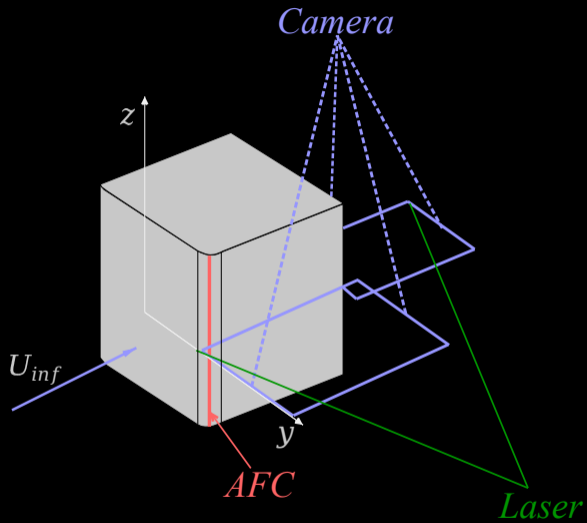




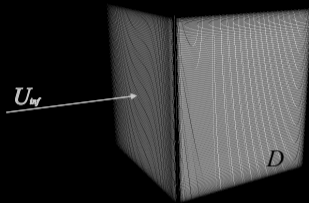




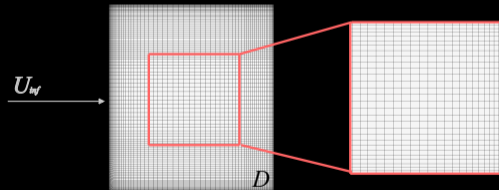
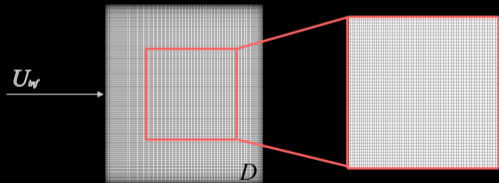
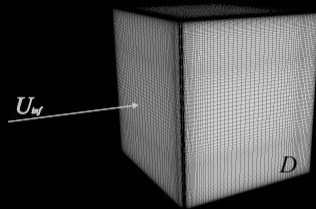


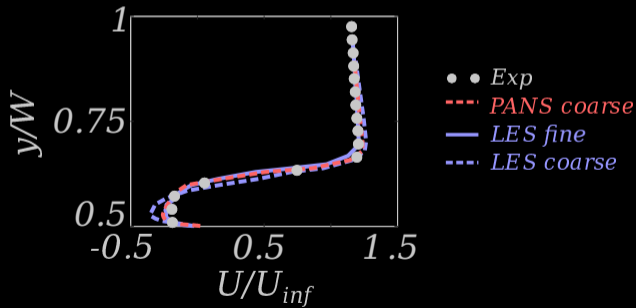
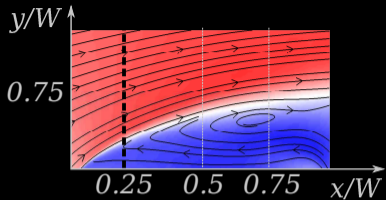
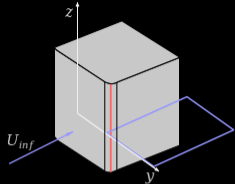


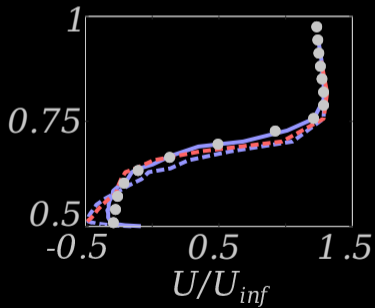
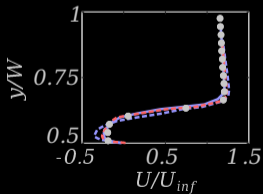
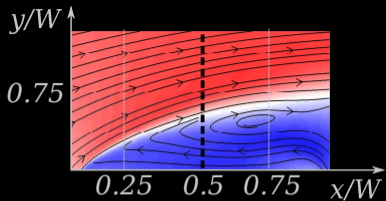
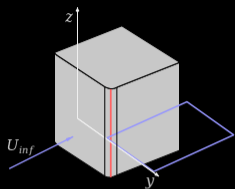
Fine (16 mil)



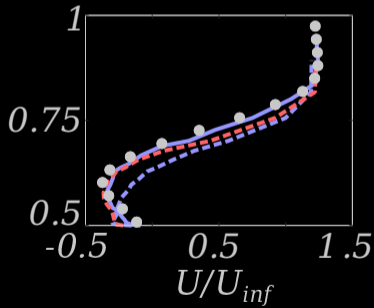
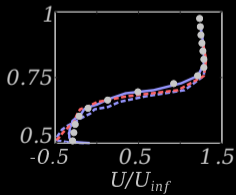
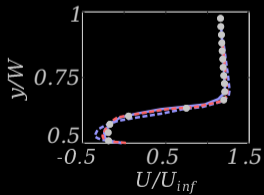
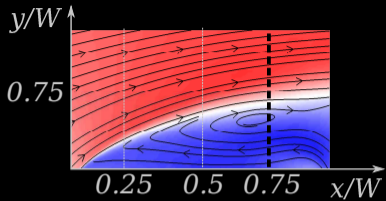
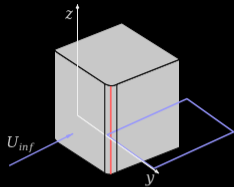
Coarse (4 mil)



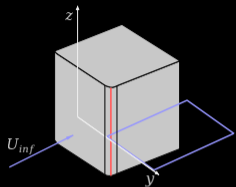




- • Exp
- - - PANS coarse
- LES fine
- - - LES coarse

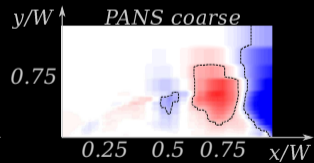
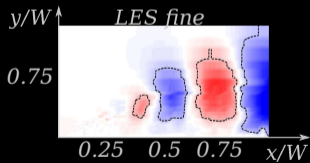
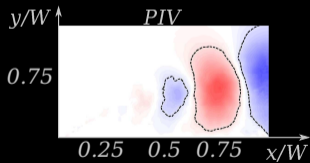


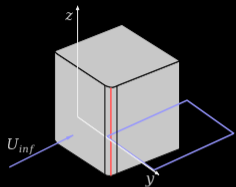
- ● Exp
- - - PANS coarse
- LES fine
- - - LES coarse



v component (y)

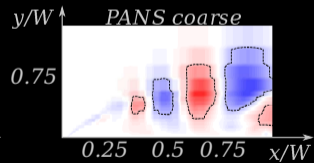
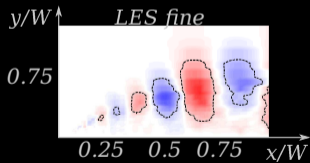
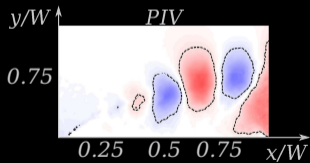
Mode 1

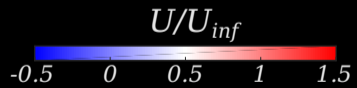


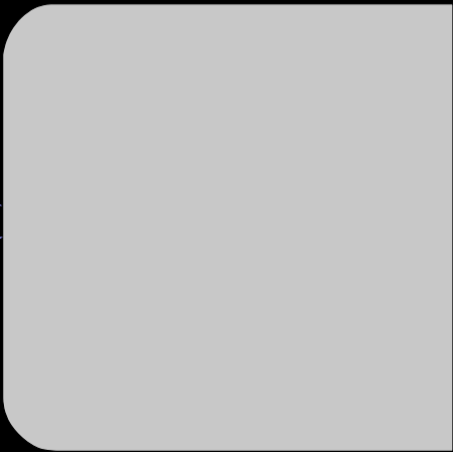
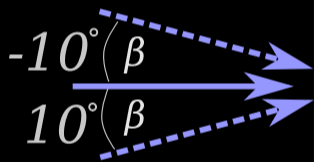


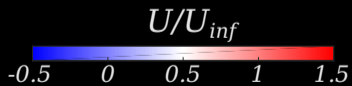
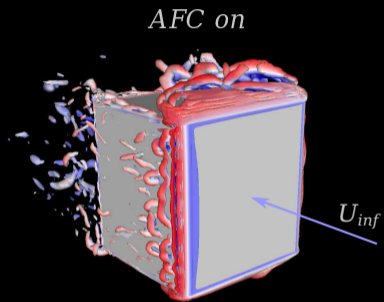
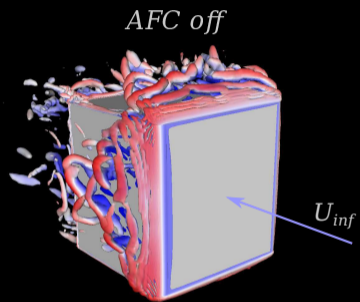
v component (y)

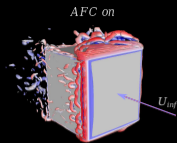
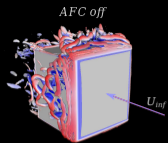
Mode 2



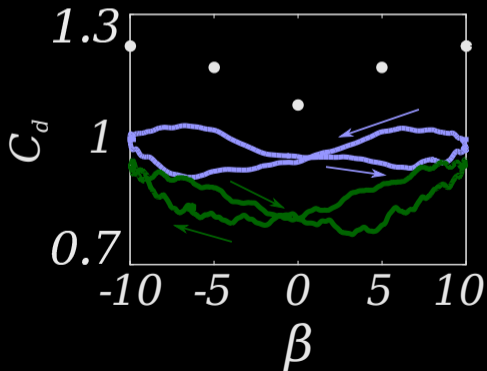


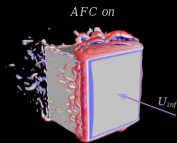
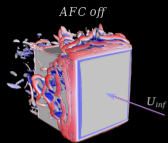




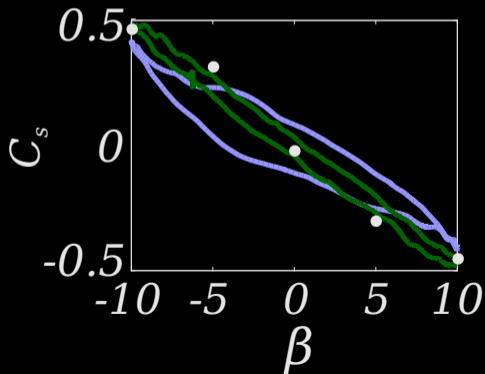
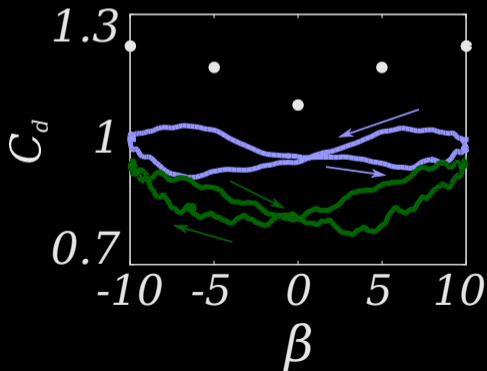


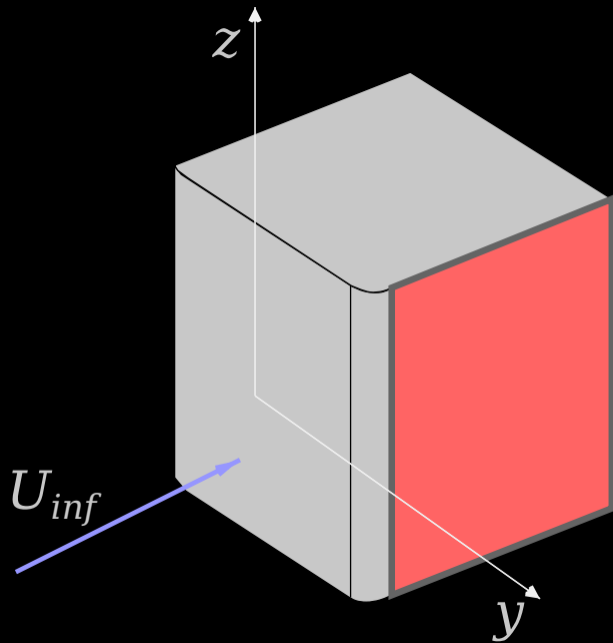
•• Stat — Dyn — Dyn Actuated

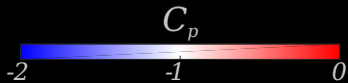
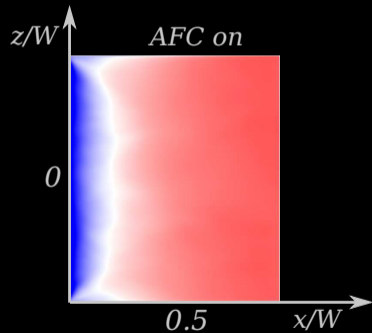
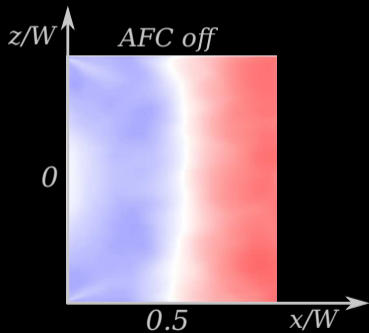
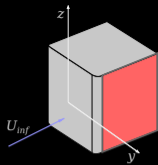




•• Stat — Dyn — Dyn Actuated









CHALMERS
UNIVERSITY OF TECHNOLOGY

