



Revealing timid pseudo-scalars with taus at the LHC

Downloaded from: <https://research.chalmers.se>, 2026-04-05 05:05 UTC

Citation for the original published paper (version of record):

Cacciapaglia, G., Ferretti, G., Flacke, T. et al (2018). Revealing timid pseudo-scalars with taus at the LHC. *European Physical Journal C*, 78(9). <http://dx.doi.org/10.1140/epjc/s10052-018-6183-4>

N.B. When citing this work, cite the original published paper.

Revealing timid pseudo-scalars with taus at the LHC

Giacomo Cacciapaglia^{1,2,a}, Gabriele Ferretti^{3,b}, Thomas Flacke^{4,c}, Hugo Serôdio^{5,d}

¹ Université de Lyon, Lyon, France

² Université Lyon 1, CNRS/IN2P3, UMR5822, IPNL, 69622 Villeurbanne Cedex, France

³ Department of Physics, Chalmers University of Technology, Fysikgården 41296 Göteborg, Sweden

⁴ Center for Theoretical Physics of the Universe, Institute for Basic Science (IBS), Daejeon 34126, Korea

⁵ Department of Astronomy and Theoretical Physics, Lund University, SE-223 62 Lund, Sweden

Received: 17 April 2018 / Accepted: 23 August 2018 / Published online: 6 September 2018

© The Author(s) 2018

Abstract A light pseudo-scalar that is copiously produced at the LHC may still be allowed by present searches. While masses above 65 GeV are effectively covered by di-photon searches, the lower mass window can be tested by a new search for boosted di-tau resonances. We test this strategy on a set of composite Higgs models with top partial compositeness, where most models can be probed with an integrated luminosity below 300 fb^{-1} .

1 Introduction

The search for new resonances is one of the main physics goals at the LHC, with the discovery of a Higgs boson being an illustrious example [1,2]. The efforts continue, mainly focusing on high mass objects typically heavier than the Higgs itself. There are in fact few searches exploring invariant masses of two Standard Model (SM) particles below, say, 100 GeV: one notable case is the search for a di-photon resonance [3,4], mostly motivated by models that feature an extended Higgs sector, like two Higgs doublet models [5] and the next-to-minimal supersymmetric SM [6].

In this article, we focus on the LHC phenomenology of a light new scalar with a mass between 10 and 100 GeV. Generically, light new scalars are strongly constrained from electroweak precision measurements (indirectly) and from direct searches at LEP and Tevatron. At the LHC, besides the above-mentioned di-photon channel, light (pseudo)-scalars are usually searched for in the decays of the 125 GeV Higgs boson. Below roughly 10 GeV, strong bounds arise

from searches related to mesons, or in experiments looking for light axion-like particles (ALPs) [7–10]. Thus, the common lore is that a new scalar, in order to escape detection, needs to be either very heavy or weakly coupled to the SM.

Note, however, that it is enough to have small couplings to electrons and to the electroweak gauge bosons in order to escape direct LEP searches and electroweak precision bounds, as well as small couplings to the Higgs to avoid the Higgs portal constraints. Couplings to gluons (and heavy quarks) are less constrained, and may lead to sizable production rates at the LHC. Candidates of this kind arise naturally in composite Higgs models that enjoy a fermion-gauge underlying description [11–15] providing a partial UV completion. Recent lattice results [16] have started to address the mass spectrum in a specific model [17].

In this article, we will consider this class of models to explore the 10–100 GeV mass window and show that it is, in fact, poorly tested. A *timid* composite pseudo-scalar (TCP) arises as the pseudo-Nambu-Goldstone boson associated with an anomaly-free U(1) global symmetry in all models of partial compositeness that enjoy a UV completion, as defined in Ref. [12]. All the possible models can be classified, and give precise predictions for the properties of the TCP candidate [15], thus mapping out a complete landscape of possibilities. We show that, while some models are already partly tested by the low mass di-photon searches, others are unconstrained. We point out that searches for boosted di-tau resonances (which could reach a lower invariant mass than the current value of 90 GeV [18,19]) give very promising signals and could be a powerful complementary probe to the di-photon channel, or even be the only way to access this class of TCPs.

^a e-mail: g.cacciapaglia@ipnl.in2p3.fr

^b e-mail: ferretti@chalmers.se

^c e-mail: flacke@ibs.re.kr

^d e-mail: hugo.serodio@thep.lu.se

Table 1 Couplings in the twelve models [15] used as benchmarks. For the top, several possibilities arise depending on the choice of top partner representation: here, as an illustration, we take the same coupling

	M1	M2	M3	M4	M5	M6	M7	M8	M9	M10	M11	M12
K_g	-7.2	-8.7	-6.3	-11.	-4.9	-4.9	-8.7	-1.6	-10.	-9.4	-3.3	-4.1
K_W	7.6	12.	8.7	12.	3.6	4.4	13.	1.9	5.6	5.6	3.3	4.6
K_B	2.8	5.9	-8.2	-17.	0.40	1.1	7.3	-2.3	-22.	-19.	-5.5	-6.3
C_f	2.2	2.6	2.2	1.5	1.5	1.5	2.6	1.9	0.70	0.70	1.7	1.8
$\frac{f_a}{f_\psi}$	2.1	2.4	2.8	2.0	1.4	1.4	2.4	2.8	1.2	1.5	3.1	2.6

2 Description of the models

The effective Lagrangian we consider is the SM Lagrangian augmented by the following terms, up to dimension five operators (counting powers of f_a):

$$\mathcal{L} = \frac{1}{2}(\partial_\mu a)(\partial^\mu a) - \frac{1}{2}m_a^2 a^2 - \sum_f \frac{iC_f m_f}{f_a} a \bar{\Psi}_f \gamma^5 \Psi_f + \frac{g_s^2 K_g a}{16\pi^2 f_a} G_{\mu\nu}^a \tilde{G}^{a\mu\nu} + \frac{g^2 K_W a}{16\pi^2 f_a} W_{\mu\nu}^i \tilde{W}^{i\mu\nu} + \frac{g'^2 K_B a}{16\pi^2 f_a} B_{\mu\nu} \tilde{B}^{\mu\nu}. \quad (1)$$

A pseudo-scalar a described by this general Lagrangian arises, for example, in UV completions of composite Higgs models, which were classified and studied in Refs [12, 15]. In this section, we briefly summarize the main results relevant for our phenomenological study. Further background information on the models is provided in Appendix A.

Within this class of models, the coupling to the SM fermions in Eq. (1) is only the first term of the expansion of the spurion coupling $-m_f(h) e^{iC_f a/f_a} \bar{\Psi}_f L \Psi_{fR} + \text{h.c.}$ (generating the fermions masses), which breaks *explicitly* the $U(1)$ shift symmetry. A derivative coupling of the TCP to fermions of the form $(\partial_\mu a/f_a) \bar{\Psi}_f \gamma^5 \gamma^\mu \Psi_f$ is absent in these models since the SM fermions are neutral under the TCP $U(1)$ charge. Although such a coupling can be obtained by using the fermion equations of motion on the leading term given in Eq. (1), the two couplings are of genuinely different origin [20], as manifested in the higher-order expansion of the spurion coupling. Starting from the complete spurion term, couplings of the Higgs to two TCPs, as well as to one TCP and Z boson, arise at loop level and are given by (see Appendix A.1 for the derivation)

$$\mathcal{L}_{haa} = \frac{3C_t^2 m_t^2 \kappa_t}{8\pi^2 f_a^2 v} \log \frac{\Lambda^2}{m_t^2} h(\partial_\mu a)(\partial^\mu a), \quad (2)$$

$$\mathcal{L}_{hZa} = \frac{3C_t m_t^2 g_A}{2\pi^2 f_a v} (\kappa_t - \kappa_V) \log \frac{\Lambda^2}{m_t^2} h(\partial_\mu a) Z^\mu, \quad (3)$$

where we list only the effect of the log-divergence ($\Lambda \sim 4\pi f_a$), $g_A = -g/(4 \cos \theta_W)$ is the axial coupling of the Z to

as for lighter fermions, whose mass arise from bilinear four-fermion interactions. f_a/f_ψ is an estimate of the ratio between the TCP decay constant f_a and the composite Higgs decay constant f_ψ

tops, and $\kappa_{V,t}$ are the corrections from compositeness to the couplings of the Higgs to vectors and tops, respectively. As $\kappa_{V,t} = 1 + \mathcal{O}(v^2/f_a^2)$, our result agrees with the fact that the only non-zero contribution to the hZa coupling arises from a dimension 7 operator [21].

The couplings to gauge bosons in Eq. (1) arise as anomalous couplings if the TCP is a (SM singlet) bound state of underlying SM charged fermions. In this case, the anomaly coefficients $K_{g,W,B}$ are fully determined by the charges of the hyper-fermions. We refer to [15] for an extensive description of a classification of UV completions giving rise to this TCP, which yields twelve models. For the purpose of this article, the TCP dynamics in the twelve models is fully specified¹ by the numerical couplings in Table 1. Note that, due to the small TCP mass, top loops also give additional sizable contributions to the couplings to gauge bosons (not included in the table, but included in our analysis).

Our goal is to confront the TCP with the existing searches and to propose a new, more sensitive search for such object. We treat the mass m_a and the decay constant f_a of the TCP as free parameters. In composite Higgs UV completions, f_a is related to the composite Higgs decay constant f_ψ , entering in the usual alignment parameter $\xi = v^2/f_\psi^2$, by a relative coefficient that was estimated in [15] and is summarized in Table 1. Since bounds on composite Higgs models require $f_\psi \gtrsim 800$ GeV, f_a is expected to be naturally of the order of $1 \div 2$ TeV.

3 Bounds from existing searches

Since the TCP is a gauge singlet, its couplings to Z and W are induced by the anomaly and by top loops, thus they are always much smaller than those of a SM Higgs boson. Hence, bounds from all LEP searches for a light Higgs, which are based on Z associated production, are evaded. At hadron colliders the TCP is copiously produced via gluon fusion. However, only very few Tevatron or LHC two-body reso-

¹ The model in [17] is denoted by M6 in this work and in [15], while the model [11] is denoted by M8.

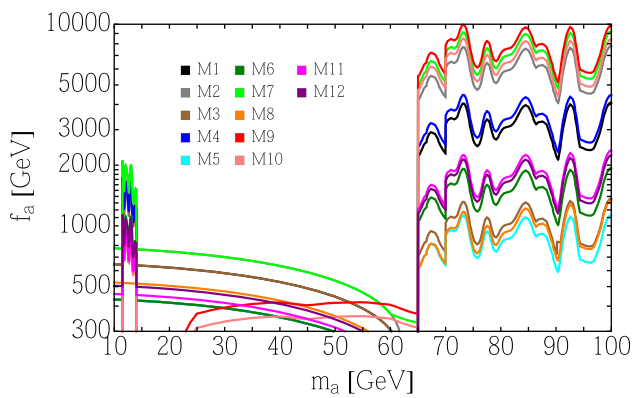


Fig. 1 Constraints on f_a as a function of m_a for the benchmark models M1 - M12, defined in Table 1. The bounds arise from di-muon searches [22,23] in the low mass range, di-photon searches [3,4] in the higher one, and from the BSM decay width of the Higgs [24] below 65 GeV. We have also indicated the current bounds obtained by adapting the results in [10] in the region between 20 and 65 GeV for the two models (M9 and M10) where they are the strongest

nant searches reach down to resonance masses below ~ 100 GeV. Relevant bounds arise from Run-I ATLAS [3] and Run-II CMS [4] di-photon searches, which reach down to masses of 65 and 70 GeV, respectively, as well as ATLAS and CMS low-mass di-muon searches [22,23], reaching up to 14 GeV. The bounds on f_a from these searches are shown in Fig. 1,² for our models. The bounds are obtained by calculating the leading order TCP production cross section following from the Lagrangian (1) with PDF set NNPDF23_nnlo_as_0119_qcd [25] and a conservative k -factor of 3.3 applied [26], and using branching ratios into $\gamma\gamma$ and $\mu\mu$ (computed at NLO following Ref. [9]) for the models listed in Table 1. Figures on the production cross sections and branching ratios in the twelve sample models are provided in Appendix A.2. Resonant di-tau searches reach values of the mass as low as 90 GeV [18,19], however the current bounds are never competitive with the di-photon ones in that range, mainly due to the presence of the Z-peak background. As noted in Ref. [10], a CMS search looking for boosted Z' in di-jet [27] may give additional bounds above 50 GeV.

For other processes, a recent comprehensive review of the existing bounds on ALPs [9] can be directly used to confront TCPs. Firstly, the one-loop suppression ($1/16\pi^2$) of couplings to vector bosons in the TCP Lagrangian (1) renders bounds from vector-boson-fusion or photon-fusion production very weak. This includes $Z \rightarrow a\gamma$ processes and production by photon fusion in Pb-Pb ultra-peripheral collisions [28]. The up-to-date most constraining searches in the mass window between 14 and 65 GeV rely on the indirect production via Higgs portal, $h \rightarrow aa$. As compared to

the generic ALP model discussed in Ref. [9], the bounds from direct searches are weakened due to the smallness of the $h \rightarrow aa$ branching fraction following from Eq. (2), and due to the smallness of the $a \rightarrow \gamma\gamma$ and $a \rightarrow \mu\mu$ branching fractions. Nevertheless, indirect constraints arise from the bounds on the BSM decay width of the Higgs, which is currently below 34% [24]: as shown in Fig. 1, the lower bound on f_a always falls short of 1 TeV for the models under consideration.³ For $m_a < 34$ GeV there is also a bound from $h \rightarrow Za$ (following from Eq.(3)), however it turns out even weaker than the Higgs portal one. Associated tta production may yield a bound on TCPs: using the results of the feasibility study [30] at $\sqrt{s} = 14$ TeV with 3 ab^{-1} , which focuses on $a \rightarrow bb$ in the mass range between 20 and 100 GeV, significant bounds on f_a can be found only for a few models in the low mass end. Associated bba production yields weaker bounds [31]. Lastly, we should mention that the contribution of the TCP to the anomalous magnetic moment of the muon [32,33] is also small. For $m_a = 10$ GeV and $f_a = 1$ TeV it varies from $\Delta a_\mu = -5.7 \times 10^{-11}$ for M9 to $\Delta a_\mu = 2.7 \times 10^{-10}$ for M7, the current discrepancy being $a_\mu^{\text{exp.}} - a_\mu^{\text{SM}} = (29.3 \pm 7.6) \times 10^{-10}$.

As shown, the TCP represents an example of a light pseudo-scalar which would evade all existing bounds, while being copiously produced at the LHC in gluon fusion. Searches in final states from which current bounds arise can be extended in mass range. The low-mass di-muon search [23] (performed at $\sqrt{s} = 7$ TeV) terminated at $m_a = 14$ GeV, but the first severe physical barrier at higher mass is the di-muon background from Drell-Yan Z production. However, a dedicated low-mass di-muon trigger and a very high invariant mass resolution would be required.⁴

A recent study on inclusive di-photon cross section measurements [10] has shown how to extend the low-mass reach of di-photon searches for a generic ALP. Applying their projected reach to our models we find a nice complementarity between the di-photon channel and our proposal to use the di-tau channel to be discussed below.⁵

4 Boosted di-tau searches as a chance to explore the TCP

As TCP decays to muons and photons have small rates, it is of interest to also look at other final states. The dom-

² The $3\text{-}\sigma$ excess at 95.3 GeV in the Run-II CMS search [4] can be seen as a bump, giving a rough estimate of the required value of f_a .

³ As the partial width scales with C_i^4 , choices of larger C_i can lead to bounds on f_a well above 1 TeV. We also remark that this bound will not substantially improve with higher luminosity, with a projected reach of 10% for 3 ab^{-1} [29].

⁴ A LHCb search for a dark photon in di-muon, within the mass range 10–70 GeV, can be found in Ref. [34].

⁵ Results of the comparison can be found in Appendix 1.

Table 2 The values of $\sigma_{\text{prod.}} \times BR_{\tau\tau} \times \epsilon$ in fb for $f_a = 1$ TeV for each of the models defined in Table 1. The main backgrounds are di-top and single-top (59.2 fb), Z/γ^* (24.7 fb), and di-bosons (11.0 fb)

m_a	10	20	30	40	50	60	70	80	90	100
M1	30.	14.	9.3	6.6	5.3	3.7	3.0	2.3	1.7	1.4
M2	44.	20.	13.	9.5	7.7	5.4	4.4	3.2	2.4	2.0
M3	26.	12.	8.4	6.1	5.0	3.6	2.9	2.2	1.6	1.4
M4	28.	11.	6.1	3.8	2.9	1.9	1.5	1.1	0.80	0.67
M5	14.	6.3	4.2	3.0	2.4	1.7	1.4	1.0	0.74	0.63
M6	14.	6.3	4.2	3.0	2.4	1.7	1.4	1.0	0.74	0.63
M7	44.	20.	13.	9.5	7.7	5.4	4.4	3.2	2.4	2.0
M8	4.0	2.1	1.8	1.6	1.6	1.3	1.2	0.96	0.76	0.69
M9	8.3	3.1	1.6	0.95	0.70	0.47	0.36	0.26	0.19	0.16
M10	8.1	3.0	1.6	0.95	0.70	0.46	0.36	0.26	0.19	0.16
M11	9.4	4.7	3.5	2.8	2.4	1.8	1.5	1.2	0.87	0.74
M12	13.	6.4	4.7	3.6	3.1	2.3	1.9	1.4	1.1	0.92

inant TCP decay channels are gg and $b\bar{b}$, but both have very large irreducible QCD background.⁶ The next-most frequent final state is $\tau^+\tau^-$: sizable rates of a few % are possible and the models with the lowest rates are the ones with better di-photon reach (see Fig. 1). Compared to the dimuon channel, the branching ratios are larger by a factor of $\sim m_\tau^2/m_\mu^2 \sim 280$.

One of the main challenges for low-mass di-tau resonant searches is the trigger. The topology that we find most promising is that of a boosted TCP recoiling against an initial state radiation (ISR) jet, and then decaying into $\tau^+\tau^-$. The boost needs to be sufficient to allow the event to pass the high-level trigger requirement in at least one category (jet, tau or lepton p_T) and yet leave enough observable signal. Boosted di-tau pairs have already been considered by CMS [37] in searches for heavy resonances which decay to hh , hZ , or hW . In our case, the mass of the TCP is not known, thus it may not be necessary to require a full reconstruction of the taus with subsequent increase of the systematic uncertainty associated to the procedure. Furthermore, we are interested in light TCPs with a large boost, and thus smaller separation angles between the di-tau decay products can be expected. All decay modes of the di-tau system – fully hadronic, semi-leptonic, and leptonic – are potentially interesting. However, for the reasons mentioned above, we focus on the opposite flavor leptonic channel, in which one τ decays to an electron and the other to a muon. One crucial issue, to be discussed more extensively in Appendix B, is related to the minimum angular separation $\Delta R_{e\mu}$ between the leptons, since the boosted tau pairs have a small separation angle. We generate the signal sample $pp \rightarrow a \rightarrow \tau^+\tau^-$ for $m_a = 10, 20, \dots, 100$ GeV with up to two jets at the partonic level using MadGraph [38]. We shower and hadronize with Pythia [39] and run the fast

detector simulation of Delphes [40] using the standard CMS card after removing the isolation requirement between electrons and muons. Table 2 shows the value of the signal cross section $\sigma_{\text{prod.}} \times BR_{\tau\tau}$ times the efficiency ϵ expected for each of the benchmark models with $f_a = 1$ TeV after imposing the following requirements:⁷ $p_{T\mu} > 52$ GeV, $p_{Te} > 10$ GeV, $\Delta R_{\mu j} > 0.5$, $\Delta R_{ej} > 0.5$, $p_{Tj} > 150$ GeV, $\Delta R_{e\mu} < 1$, $m_{e\mu} < 100$ GeV. The upper cut on the separation $\Delta R_{e\mu} < 1$ is essential in reducing the background from W 's [41], while we do not impose any minimum value yet. (This last issue is discussed below and in Appendix B.)

The leading irreducible SM backgrounds are $t\bar{t}$ + single top, γ^*/Z and VV , the last one being mainly W^+W^- . Our simulation of these backgrounds yields $\sigma \times \epsilon = 59, 25$ and 11 fb, respectively, after imposing the same cuts as above. As discussed in Appendix B, we expect the reducible backgrounds of single vector boson+fakes and QCD to be sub-leading (of the order of a few fb) in the (μ, e) channel. Note that we do not require full reconstruction of the tau momentum.

To be able to estimate the reach of Run II + III at the LHC, it is essential to know the systematic uncertainties because we are in a situation where the signal over background ratio is small, $S/B \ll 1$, as can be seen from Table 2. Since a search of this type has not been done by the experimental collaborations, we cannot reliably quantify the systematic uncertainties yet. Data driven techniques can certainly be used to reduce the systematic uncertainties on the different backgrounds. For the lepton identification, the systematic uncertainties typically amount to 1% [41], while we do not require tau identification, which would increase the systematics to 10–20%. To assess the feasibility of the analysis, we will include the systematic uncer-

⁶ Searches for boosted low-mass di-jet resonances are possible, as for instance Ref. [27]. See also [35] for di-tau jets and [36] for associated top production.

⁷ For more details on event generation, cut-flows and results, see Appendix B.

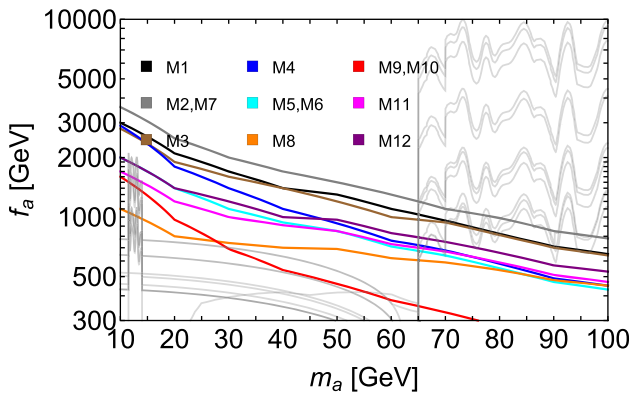


Fig. 2 Values of f_a for models M1 - M12 for which $\mathcal{Z} \equiv S/\sqrt{B + \delta^2 B^2} = 3$ in the proposed di-tau search after an integrated Luminosity of 300 fb^{-1} . We assume a systematic error on the background $\delta = 1\%$. Shown in grey are the current bounds as of Fig. 1

tainty δ in the significance \mathcal{Z} according the approximate formula

$$\mathcal{Z} = \frac{S}{\sqrt{B + \delta^2 B^2}}, \tag{4}$$

where S and B are the number of signal and background events at a given integrated luminosity and δ the relative systematic error on the background. Eq. (4) works quite well in the regime of interest for this work when compared to the more general treatment in [42]. A projection of the bound on f_a for the various models after 300 fb^{-1} integrated luminosity is shown in Fig. 2, including an estimated systematic uncertainty of 1%. We can see that for all models with exception of M9 and M10, the boosted di-tau search we propose can probe the mass range of 10–70 GeV with integrated luminosity below 300 fb^{-1} .

In Fig. 3 we show the relative change in the projected bound on f_a if a minimum $\Delta R_{e\mu}$ cut of 0.1 or 0.2 is imposed as well as its dependence on a change in systematic uncertainty from 1 to 0, 0.5, and 2%. These changes apply to all models in a universal way. We can see a loss of sensitivity for masses below $\sim 30 - 40 \text{ GeV}$ when raising $\Delta R_{e\mu}$, while above this mass range the search is barely affected. Thus, being able to remove or reduce the minimum separation angle is important for the lowest mass region, as long as it does not imply an increase in the systematic errors.

The plot also clearly shows the importance of controlling the systematic uncertainties to a level close to 1%. The latter values are what CMS and ATLAS typically require for opposite sign leptons [41] in current searches.

It is possible to improve sensitivity by imposing variable cuts on the invariant mass $m_{e\mu}$ and particularly on the angular separation $\Delta R_{e\mu}$ of the lepton pair depending on the mass range of interest. For guidance we show in Fig. 4 the kin-

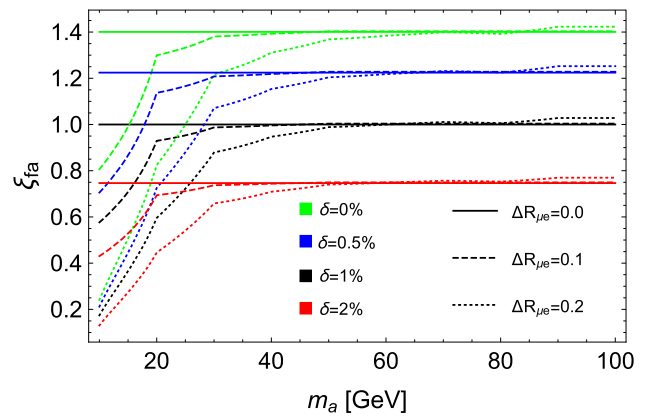


Fig. 3 Relative change $\xi_{f_a} \equiv f_a^{\delta, \Delta R_{e\mu}} / f_a^{1\%, 0}$ in the projected bounds on f_a with 300 fb^{-1} of data. We plot the relative change against the baseline presented in Fig. 2 for different values of systematic uncertainties $\delta = 0, 0.5, 1,$ and 2% (green, blue, black, and red) and choosing three different separation cuts $\Delta R_{e\mu} > 0$ (solid) 0.1 (dashed) and 0.2 (dotted) respectively

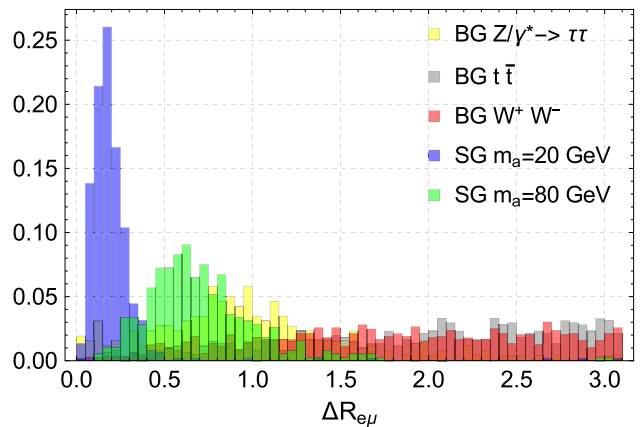


Fig. 4 Angular separation ($\Delta R_{e\mu}$) between the two leptons for two signal (SG) masses (20 and 80 GeV) compared to the most relevant backgrounds (BG). Small separation angles can be a good discriminant particularly for low masses

matic distribution of $\Delta R_{e\mu}$ for the most relevant backgrounds and the signal with $m_a = 20$ and 80 GeV before imposing the $m_{e\mu} < 100 \text{ GeV}$ and $\Delta R_{e\mu} < 1$ cuts.

As mentioned above, fully or semi-hadronic decays of the di-tau system may also be testable by designing appropriate di-tau jet algorithms. For the semi-hadronic case, a sophisticated isolation procedure has been used by CMS for boosted Higgs tagging in the di-tau channel. However, large systematic uncertainties, or the order of 20–30% [37], are introduced due to the modified isolation and tau-identification procedures. Furthermore, the signal we are interested in features smaller separation between the two taus, thus a better performance may be achieved by a dedicated identification procedure. For instance, the technique of “mini-isolation” proposed in Ref. [43] may be adapted to this case, although

this is beyond the scope of this paper. For the fully hadronic case, preliminary studies in Refs. [44,45] show that a good discrimination between di-tau jets and single tau or QCD jets can be achieved using sub-jet variables. However, a correct estimate of the background (especially from QCD) can only be done with data driven techniques, thus we do not attempt to quantify the sensitivity of these channels.

5 Conclusions

The search for new resonances at the LHC continues, and many searches for high-mass resonances are being performed. Nevertheless, complementary searches for lower-mass resonances which have evaded current constraints must not be forgotten. We observe that light pseudo-scalars in the mass regime between 14 and 65 GeV can be copiously produced at the LHC while avoiding current experimental constraints.

We propose to search for boosted di-tau resonances, produced via gluon fusion, that can effectively cover this open window. We test this strategy on a set of twelve benchmark models of composite Higgs with top partial compositeness, which have a simple gauge-fermion underlying description. Low mass di-photon searches effectively cover masses above 65 GeV. Extending the di-photon search to lower masses is challenging due to triggers (but potential solutions have been presented [10]), while resuming low-mass di-muon resonant searches and extending them to higher masses is possible but challenging due to increased muon p_T trigger thresholds. The boosted di-tau search we propose allows to access the open window below 65 GeV, and, for some models, it can be competitive with the di-photon channel at higher masses.

Acknowledgements We thank Hwidong Yoo for helpful comments and suggestions on lepton-isolation and di-muon searches, Suzanne Gascon-Shotkin for comments on di-photon and di-tau searches. We thank Alberto Mariotti, Diego Redigolo and Filippo Sala for discussions about the relation of their proposed search to ours. We thank Matthias Neubert for email communications. GF and GC thank for hospitality the IBS CTPU, where part of this work was performed. TF was supported by IBS under the project code IBS-R018-D1. GF is supported in part by a grant from the Wallenberg foundation. GC acknowledges partial support from the Institut Franco-Suedois (project Tör) and the Labex Lyon Institute of the Origins – LIO. HS has received funding from the European Research Council (ERC) under the European Union's Horizon 2020 research and innovation programme (Grant agreement No 668679).

Open Access This article is distributed under the terms of the Creative Commons Attribution 4.0 International License (<http://creativecommons.org/licenses/by/4.0/>), which permits unrestricted use, distribution, and reproduction in any medium, provided you give appropriate credit to the original author(s) and the source, provide a link to the Creative Commons license, and indicate if changes were made. Funded by SCOAP³.

Appendices

A Details of the models

A light Higgs may emerge as the pseudo-Nambu-Goldstone boson (pNGB) of a spontaneously broken global symmetry of a new strongly interacting sector. Most of the developments in these models have been achieved by use of effective descriptions. However, as shown in [15], the knowledge of the underlying theory (a partial UV completion) based on gauge-fermion models allows for specific, and testable, predictions.

A particular minimalist class of UV completions was found in [12]. In such models, dangerous leptoquark pNGBs are avoided by having two distinct cosets, one associated with color and the other with electroweak quantum numbers. The presence of two cosets also requires the presence of two species of underlying fermions in the theory, ψ and χ . Imposing further dynamical assumptions, one is left with twelve models, whose properties are summarized in Table 3. The details of the models have been extensively explored in Ref. [15], so here we will simply recall their main features.

In order to study the low energy degrees of freedom of the present models we use the formulation of chiral perturbation theory. We parameterize relevant degrees of freedom as

$$\Sigma_r = \exp \left[i2\sqrt{2}c_5 \frac{\pi_r^a T_r^a}{f_r} \right] \cdot \Sigma_{0,r} \quad \text{and} \quad \Phi_r = \exp \left[ic_5 \frac{a_r}{f_{a_r}} \right], \quad (5)$$

where $r = \psi$ or χ . The meson matrices Σ_r are associated with electroweak and color cosets. The number of fields π_r^a , associated with the broken generators of the non-Abelian symmetries, is model dependent. The matrix $\Sigma_{0,r}$ is the gauge-preserving vacuum. The meson matrix Σ_ψ contains a Higgs in the custodial representation on top of extra scalar multiplets. The coefficient c_5 is $\sqrt{2}$ when the ψ irrep is real and 1 otherwise.

While the meson matrices Σ_r have a different structure for each coset, the Abelian terms Φ_r characterize a universal feature of all the models, i.e. the presence of two pseudo-scalars in the spectrum. They are associated with the freedom to perform a chiral rotation in the underlying fermions ψ and χ , or, in other words, with the presence of the Abelian symmetries $U(1)_{\psi,\chi}$. These symmetries are spontaneously broken by the respective condensates, and explicitly broken by the underlying fermion masses and the gauging of the SM symmetries (via anomalies). On top of this, one combination has an anomaly with the new strong dynamics gauge bosons. The charges for the non-anomalous $U(1)$ are given in Table 3. For each model we can, therefore, find the linear combinations of $a_{\psi,\chi}$ that are anomaly-free and anomalous, i.e.

Table 3 The first column shows the EW and color cosets, respectively. The $-q_\chi/q_\psi$ column indicates the ratio of charges of the fermions under the non-anomalous $U(1)$ combination. HC is the confining hyper-color gauge group. \mathbf{F} and \mathbf{A}_2 denote the fundamental and anti-symmetric representation of HC

Coset	HC	ψ	χ	$-q_\chi/q_\psi$	Y_χ	Model
$\frac{SU(5)}{SO(5)} \times \frac{SU(6)}{SO(6)}$	$SO(7)$	$5 \times \mathbf{F}$	$6 \times \mathbf{Spin}$	5/6	1/3	M1
$\frac{SU(5)}{SO(5)} \times \frac{SU(6)}{SO(6)}$	$SO(9)$	$5 \times \mathbf{F}$	$6 \times \mathbf{Spin}$	5/12	1/3	M2
$\frac{SU(5)}{SO(5)} \times \frac{SU(6)}{SO(6)}$	$SO(7)$	$5 \times \mathbf{Spin}$	$6 \times \mathbf{F}$	5/6	2/3	M3
$\frac{SU(5)}{SO(5)} \times \frac{SU(6)}{SO(6)}$	$SO(9)$	$5 \times \mathbf{Spin}$	$6 \times \mathbf{F}$	5/3	2/3	M4
$\frac{SU(5)}{SO(5)} \times \frac{SU(6)}{Sp(6)}$	$Sp(4)$	$5 \times \mathbf{A}_2$	$6 \times \mathbf{F}$	5/3	1/3	M5
$\frac{SU(5)}{SO(5)} \times \frac{SU(3)^2}{SU(3)}$	$SU(4)$	$5 \times \mathbf{A}_2$	$3 \times (\mathbf{F}, \bar{\mathbf{F}})$	5/3	1/3	M6
$\frac{SU(5)}{SO(5)} \times \frac{SU(3)^2}{SU(3)}$	$SO(10)$	$5 \times \mathbf{F}$	$3 \times (\mathbf{Spin}, \bar{\mathbf{Spin}})$	5/12	1/3	M7
$\frac{SU(4)}{Sp(4)} \times \frac{SU(6)}{SO(6)}$	$Sp(4)$	$4 \times \mathbf{F}$	$6 \times \mathbf{A}_2$	1/3	2/3	M8
$\frac{SU(4)}{Sp(4)} \times \frac{SU(6)}{SO(6)}$	$SO(11)$	$4 \times \mathbf{Spin}$	$6 \times \mathbf{F}$	8/3	2/3	M9
$\frac{SU(4)^2}{SU(4)} \times \frac{SU(6)}{SO(6)}$	$SO(10)$	$4 \times (\mathbf{Spin}, \bar{\mathbf{Spin}})$	$6 \times \mathbf{F}$	8/3	2/3	M10
$\frac{SU(4)^2}{SU(4)} \times \frac{SU(6)}{SO(6)}$	$SU(4)$	$4 \times (\mathbf{F}, \bar{\mathbf{F}})$	$6 \times \mathbf{A}_2$	2/3	2/3	M11
$\frac{SU(4)^2}{SU(4)} \times \frac{SU(3)^2}{SU(3)}$	$SU(5)$	$4 \times (\mathbf{F}, \bar{\mathbf{F}})$	$3 \times (\mathbf{A}_2, \bar{\mathbf{A}}_2)$	4/9	2/3	M12

$$\tilde{a} = \frac{q_\psi f_{a_\psi} a_\psi + q_\chi f_{a_\chi} a_\chi}{\sqrt{q_\psi^2 f_{a_\psi}^2 + q_\chi^2 f_{a_\chi}^2}} \quad \text{and} \quad \tilde{\eta} = \frac{q_\psi f_{a_\psi} a_\chi - q_\chi f_{a_\chi} a_\psi}{\sqrt{q_\psi^2 f_{a_\psi}^2 + q_\chi^2 f_{a_\chi}^2}} \tag{6}$$

respectively. These combinations are, in general, not the physical mass eigenstates. Ref. [15] studied the phenomenology of these two states in the case where they are both heavy (above 500 GeV). In this article, we are only interested in the limit where one of them is light: this can only happen for the pNGB associated to the non-anomalous $U(1)$, i.e. \tilde{a} , while the other one is massive and decouples. Thus, the light mass eigenstate a coincides with the non-anomalous \tilde{a} .

The couplings of the light pNGB to gauge bosons and fermions can be expressed as (we match the notation used in (1) with the one used in Ref. [15]):

$$K_A = c_5 \frac{C_A^\psi q_\psi + C_A^\chi q_\chi}{\sqrt{q_\psi^2 + q_\chi^2}} \quad \text{and} \quad C_t = c_5 \frac{n_\psi q_\psi + n_\chi q_\chi}{\sqrt{q_\psi^2 + q_\chi^2}}, \tag{7}$$

with $A = g, W, B$, and we have normalized the coefficients in such a way to render them independent on the normalization of the charges. The numerical values for each model are given in Table 1. The $C_A^{\psi,\chi}$ are WZW coefficients of the anomaly terms between $U(1)_{\psi,\chi}$ and the SM gauge

group. These are completely determined by the underlying fermionic representation. We always have $C_W^\psi = C_B^\psi = d_\psi$ (dimension of the ψ irrep under the hyper-color group) for complex and real irreps and $C_W^\psi = C_B^\psi = d_\psi/2$ for pseudo-real ones. For the fermion χ we have $C_G^\chi = d_\chi$ and $C_B^\chi = 6Y_\chi^2 d_\chi$ for all irreps. The decay constant in (1) is related to the decay constants of the two condensates as

$$f_a = \sqrt{\frac{q_\psi^2 f_{a_\psi}^2 + q_\chi^2 f_{a_\chi}^2}{q_\psi^2 + q_\chi^2}}. \tag{8}$$

To quantify the amount of fine-tuning, it is necessary to give an estimate of this decay constant with respect to the one entering the Higgs sector. To do so, we relate the decay constants in the abelian and non-abelian sectors by use of large- N estimates: $f_{a_\psi} = \sqrt{N_\psi} f_\psi$ and $f_{a_\chi} = \sqrt{N_\chi} f_\chi$. This leads to:

$$\frac{f_a}{f_\psi} = \sqrt{\left(N_\psi + N_\chi \frac{q_\chi^2 f_\chi^2}{q_\psi^2 f_\psi^2} \right) / \left(1 + \frac{q_\chi^2}{q_\psi^2} \right)}. \tag{9}$$

The ratio f_ψ/f_χ can be estimated based on the MAC hypothesis [15], leading to

Table 4 Values of C_t for the various possible top partner assignment. For the last two columns, the values correspond to $(\pm 4, 2)$ for $\psi\psi\chi$ models ($Y_\chi = 2/3$), and $(2, \pm 4)$ for $\psi\chi\chi$ models ($Y_\chi = 1/3$). In the paper we used the assignment $(2, 0)$ which is also common to all other fermions

(n_ψ, n_χ)	$(\pm 2, 0)$	$(0, \pm 2)$	$(4, 2)$ or $(2, 4)$	$(-4, 2)$ or $(2, -4)$
M1	± 2.2	∓ 1.8	-1.4	5.8
M2	± 2.6	∓ 1.1	0.44	4.8
M3	± 2.2	∓ 1.8	2.5	-6.2
M4	± 1.5	∓ 2.4	0.49	-5.3
M5	± 1.5	∓ 2.4	-3.4	6.3
M6	± 1.5	∓ 2.4	-3.4	6.3
M7	± 2.6	∓ 1.1	0.44	4.8
M8	± 1.9	∓ 0.63	3.2	-4.4
M9	± 0.70	∓ 1.9	-0.47	-3.3
M10	± 0.70	∓ 1.9	-0.47	-3.3
M11	± 1.7	∓ 1.1	2.2	-4.4
M12	± 1.8	∓ 0.81	2.8	-4.5

$$f_\psi/f_\chi = \{1.4, 0.75, 0.73, 1.3, 2.8, 1.9, 0.58, 0.38, 2.3, 1.7, 0.52, 0.38\} \tag{10}$$

for models M1, ..., M12.

We finally want to comment on the couplings to fermions. For the light quarks and leptons, we assume that they couple to the strong dynamics via bi-linear four fermion interactions only involving ψ 's. This is mainly due to the fact that it is impossible to generate enough partners to make all SM fermions partially composite. Thus, the couplings are obtained by setting $(n_\psi, n_\chi) = (2, 0)$ in the above expressions. For the top, the coupling crucially depends on the charges of the top partners: if the bound state is made of $\psi\psi\chi$, the possible assignments are $(n_\psi, n_\chi) = (\pm 2, 0), (0, \pm 2), (\pm 4, 2)$, while for $\psi\chi\chi$ one has $(n_\psi, n_\chi) = (\pm 2, 0), (0, \pm 2), (2, \pm 4)$. The values of the couplings C_t for all models and all assignments are reported in Table 4. In the main text, we present results for the case $(2, 0)$, which gives the same coupling to all SM fermions. This is only a representative case. Note that the bounds from other searches also depend on this choice.

A.1 Loop calculation for the $h \rightarrow aa$ and $h \rightarrow Za$ decays

The coupling of the Higgs to two TCPs is generated mainly by loops of top quarks (the contribution of lighter fermions being suppressed by the mass, while the gauge contribution is suppressed by the small anomalous couplings). The relevant vertices can be read off by expanding the spurion term $-m_t(h) e^{iC_t a/f_a} \bar{\Psi}_t \Psi_t + h.c.$ as follows:

$$\begin{aligned}
 & -m_t \bar{\Psi}_t \Psi_t - i \frac{C_t m_t}{f_a} a \bar{\Psi}_t \gamma^5 \Psi_t + \frac{C_t^2 m_t}{2 f_a^2} a^2 \bar{\Psi}_t \Psi_t \\
 & - \frac{m_t}{v} \kappa_t h \left(\bar{\Psi}_t \Psi_t + i \frac{C_t}{f_a} a \bar{\Psi}_t \gamma^5 \Psi_t - \frac{C_t^2}{2 f_a^2} a^2 \bar{\Psi}_t \Psi_t \right) + \dots
 \end{aligned} \tag{11}$$

where the Higgs coupling is defined as

$$\frac{m_t}{v} \kappa_t = \left. \frac{\partial m_t(h)}{\partial h} \right|_{h \rightarrow 0}, \tag{12}$$

so that κ_t encodes the deviations from the SM coupling m_t/v . The Lagrangian above allows for four diagrams, depicted in Fig. 5. The last three contain a quadratic divergence, that vanishes once they are summed. Thus, we are left with a log divergence that contributes to the amplitude as:

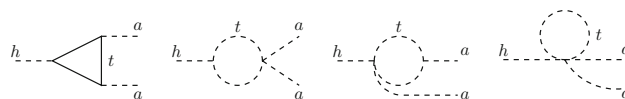


Fig. 5 Top loop diagrams contributing to the effective coupling $h \rightarrow aa$

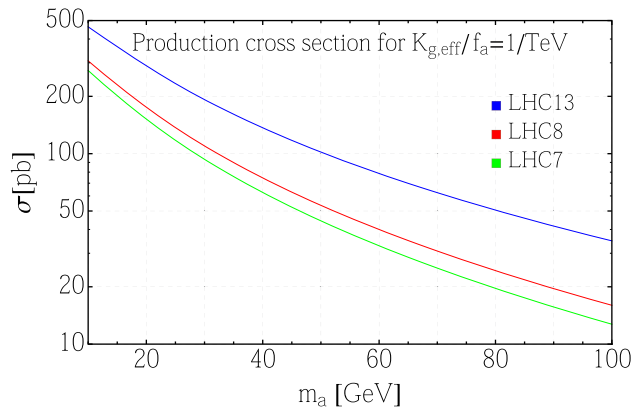


Fig. 6 Production cross section of a for LHC with $\sqrt{s} = 7, 8, 13$ TeV, for $K_{g,eff}/f_a = 1/\text{TeV}$

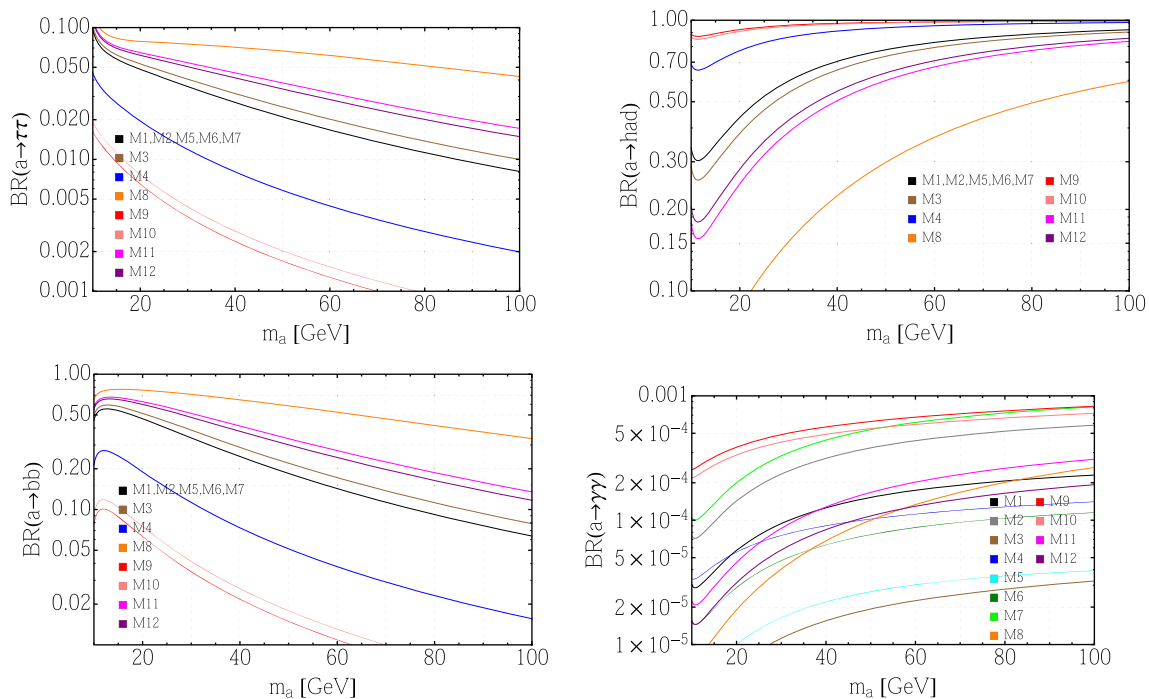


Fig. 7 Main branching ratios of the TCP for the reference models M1-M12 (c.f. Table 1) as a function of m_a : $a \rightarrow \tau^+\tau^-$ (top-left), $a \rightarrow$ hadrons (top right), $a \rightarrow b\bar{b}$ (bottom-left) and $a \rightarrow \gamma\gamma$ (bottom-right)

$$i\Sigma = -i \frac{C_t^2 m_t^2}{v f_a^2} \kappa_t \frac{3}{8\pi^2} \log \frac{\Lambda^2}{m_t^2} (p_h^2 - p_{a1}^2 - p_{a2}^2) + \text{finite} \tag{13}$$

where p_h and p_{ai} are the four-momenta of the Higgs and of the two TCPs respectively. The operator in Eq. (2) matches the divergent part of the above amplitude. Note also that the result differs from the one in Ref. [9] by a factor of 1/4 while having the same form: the two calculations indeed refer to two different models, as in Ref. [9] only a derivative coupling is considered.

The calculation of the $h \rightarrow Za$ vertex is the same as in Ref. [21], except for the modifications of the Higgs couplings κ_t and κ_V that prevent the cancellation of the log divergences.

A.2 Cross sections, widths and branching ratios

In Fig. 6 we plot the TCP production cross section for gluon fusion at the LHC with a center-of-mass energy of 7, 8 and 13 TeV. We also show, in Fig. 7, the branching ratios in the main decay channels.

B Details of the simulation

As already stated in the main text, we generate a sample of signal events $pp \rightarrow a \rightarrow \tau^+\tau^-$ for $m_a =$

10, 20, ... 100 GeV with up to two jets at the partonic level using MadGraph/ MadEvent. We shower and hadronize with Pythia and pass the resulting events through the fast detector simulation of Delphes using the standard CMS card with the modification on electron and muon isolation to be discussed below.

For the signal sample we set a p_T -cut of 100 GeV on the first jet at partonic level in order to increase the efficiency of the analysis at the reconstructed level. We use MLM matching and nn231o1 PDFs for both signal and background generation.

First, we generate the signal samples with⁸ $K_{g,\text{eff}} = C_\tau = 1$ and $f_a = 1$ TeV with the same pNGB width of 1 GeV for all masses and re-scale the production cross-section multiplying by $\text{GeV}/\Gamma_{\tau\tau}$ for each model.

We then perform the cuts discussed in the main paper and below on these samples. This gives the value of the TCP production cross-section after the cuts for $K_{g,\text{eff}} = 1$ and $f_a = 1$ TeV that we denote by $\bar{\sigma}_{\text{prod.}} \times \epsilon$, where ϵ is the efficiency of the cut flow.

The true value of $\sigma_{\text{prod.}} \times \text{BR}_{\tau\tau} \times \epsilon$ displayed in Table 2 for each model is obtained by multiplying $\bar{\sigma}_{\text{prod.}} \times \epsilon$ by $K_{g,\text{eff}}^2 \times \text{BR}_{\tau\tau}$ shown in Table 5. We do not include a k -factor for this analysis. The efficiencies of the cuts depend on m_a but are independent on the type of model. Thus the expected signal

⁸ Here, $K_{g,\text{eff}} \sim K_g - 1/2C_t$ includes the effect of top loops in the gluon-fusion production.

Table 5 Values of $K_{g,\text{eff}}^2 \times BR_{\tau\tau}$ for the models M1 - M12 and $m_a = 10 \dots 100$ GeV. For the values given, we chose the discrete charges of the top partners to be the same as those of the other fermions

m_a [GeV]	10	20	30	40	50	60	70	80	90	100
M1	6.7	3.4	2.5	1.9	1.5	1.2	0.95	0.79	0.66	0.57
M2	9.7	4.8	3.6	2.7	2.1	1.7	1.4	1.1	0.96	0.82
M3	5.7	2.9	2.2	1.8	1.4	1.1	0.91	0.76	0.65	0.56
M4	6.2	2.6	1.6	1.1	0.79	0.60	0.47	0.39	0.32	0.27
M5	3.0	1.5	1.1	0.84	0.66	0.52	0.42	0.35	0.30	0.25
M6	3.0	1.5	1.1	0.84	0.66	0.52	0.42	0.35	0.30	0.25
M7	9.7	4.8	3.6	2.7	2.1	1.7	1.4	1.1	0.96	0.82
M8	0.88	0.50	0.48	0.46	0.43	0.40	0.36	0.33	0.30	0.28
M9	1.9	0.74	0.42	0.27	0.19	0.14	0.11	0.091	0.076	0.064
M10	1.8	0.73	0.41	0.27	0.19	0.14	0.11	0.091	0.076	0.064
M11	2.1	1.1	0.94	0.79	0.66	0.55	0.47	0.40	0.35	0.30
M12	2.9	1.5	1.3	1.0	0.85	0.70	0.59	0.50	0.43	0.37

Table 6 The values of $\sigma_{\text{prod.}} \times BR_{\tau\tau} \times \epsilon$ in fb for $f_a = 1$ TeV for each of the models defined in Table 1 if a separation cut $\Delta R_{e\mu} > 0.1$ is imposed. The main backgrounds are di-top and single-top (59.2 fb), Z/γ^* (24.0 fb), and di-bosons (10.9 fb)

m_a	10	20	30	40	50	60	70	80	90	100
M1	9.9	12.	9.0	6.5	5.3	3.7	3.0	2.3	1.7	1.4
M2	14.	17.	13.	9.3	7.7	5.4	4.4	3.2	2.4	2.0
M3	8.5	10.	8.2	6.0	5.0	3.6	2.9	2.2	1.6	1.4
M4	9.1	9.2	5.9	3.8	2.9	1.9	1.5	1.1	0.80	0.67
M5	4.5	5.2	4.0	2.9	2.4	1.7	1.4	1.0	0.74	0.63
M6	4.5	5.2	4.0	2.9	2.4	1.7	1.4	1.0	0.74	0.63
M7	14.	17.	13.	9.3	7.7	5.4	4.4	3.2	2.4	2.0
M8	1.3	1.7	1.8	1.6	1.6	1.3	1.2	0.96	0.76	0.69
M9	2.7	2.6	1.5	0.93	0.70	0.46	0.36	0.26	0.19	0.16
M10	2.7	2.5	1.5	0.93	0.70	0.46	0.36	0.26	0.19	0.16
M11	3.1	3.9	3.4	2.7	2.4	1.8	1.5	1.2	0.87	0.74
M12	4.3	5.3	4.6	3.5	3.1	2.3	1.9	1.4	1.1	0.92

S is obtained as $S = \sigma_{\text{prod.}} \times BR_{\tau\tau} \times \epsilon \times L \times (\text{TeV}^2/f_a^2)$, where L is the total luminosity.

The $Z/\gamma^* \rightarrow \tau\tau$ background cross-section is estimated from the Monte Carlo. We generate this sample in exactly the same way as the signal sample, i.e. with up to two jets MLM matched and a p_T cut of 100 GeV on the leading jet at partonic level. We find the cross-section after matching to be 49 pb.

For the remaining background processes we generate all the fully leptonic channels. We use the total cross-sections published by ATLAS, multiplied by the appropriate leptonic branching ratios for the W and Z ($BR(W \rightarrow l\nu) = 0.326$, $BR(Z \rightarrow l^+l^-) = 0.101$, where $l = e, \mu, \tau$, assuming $BR(t \rightarrow Wb) = 100\%$). We find $\sigma_{t, \text{lep.}} = 82.9$ pb, $\sigma_{\tau W, \text{lep.}} = 10.$ pb, $\sigma_{W, \text{lep.}} = 15.1$ pb, $\sigma_{WZ, \text{lep.}} = 1.66$ pb, $\sigma_{ZZ, \text{lep.}} = 0.175$ pb.

For the (e, μ) channel the QCD background and the single vector boson production+fakes background are expected to be sub-leading with respect to the irreducible backgrounds above. These can only be reliably computed by the experi-

ment using data driven techniques. An order of magnitude estimate using a fake-rate of 10^{-3} for $j \rightarrow e$ and 10^{-4} for $j \rightarrow \mu$ and (conservatively) efficiencies similar to those of the signal sample ≈ 0.003 leads us to estimate their total contribution after cuts to be at most a few fb. The $t\bar{t}$ and Wt backgrounds are further reduced by imposing a b -jet veto, while the di-boson backgrounds containing a Z boson are further reduced by vetoing on a third lepton. Neither of these last two cuts has any significant effect on the signal sample.

We now would like to pick a set of cuts that maximizes the figure of merit \mathcal{Z} defined in Eq. (4) for our channel (opposite sign, opposite flavor di-lepton channel). We need to satisfy both trigger and isolation requirements for the leptons. From the trigger menus discussed in [46] we chose to retain only muons with $p_{T\mu} > 52$ GeV (off-line selection). This allows us to go rather low in the selection of p_{Tj} of the leading jet, on which we are not triggering. We find that $p_{Tj} > 150$ GeV gives an acceptable compromise between the signal rate and the reach in \mathcal{Z} . The p_{Te} of the electron is chosen to be above 10 GeV and we use the standard isolation requirements

Table 7 The values of $\sigma_{\text{prod.}} \times BR_{\tau\tau} \times \epsilon$ in fb for $f_a = 1$ TeV for each of the models defined in Table 1 if a separation cut $\Delta R_{e\mu} > 0.2$ is imposed. The main backgrounds are di-top and single-top (55.9 fb), Z/γ^* (22.6 fb), and di-bosons (10.5 fb)

m_a	10	20	30	40	50	60	70	80	90	100
M1	0.86	4.7	6.8	5.6	4.9	3.5	2.9	2.2	1.7	1.4
M2	1.2	6.8	9.8	8.1	7.1	5.0	4.2	3.2	2.4	2.0
M3	0.74	4.1	6.1	5.2	4.7	3.3	2.8	2.1	1.6	1.4
M4	0.79	3.7	4.4	3.3	2.7	1.8	1.5	1.1	0.80	0.66
M5	0.39	2.1	3.0	2.5	2.2	1.6	1.3	0.99	0.74	0.62
M6	0.39	2.1	3.0	2.5	2.2	1.6	1.3	0.99	0.74	0.62
M7	1.2	6.8	9.8	8.1	7.1	5.0	4.2	3.2	2.4	2.0
M8	0.11	0.71	1.3	1.4	1.4	1.2	1.1	0.94	0.76	0.68
M9	0.24	1.0	1.1	0.81	0.65	0.44	0.35	0.26	0.19	0.16
M10	0.23	1.0	1.1	0.81	0.65	0.43	0.35	0.26	0.19	0.16
M11	0.27	1.6	2.6	2.4	2.2	1.7	1.5	1.1	0.86	0.74
M12	0.37	2.2	3.5	3.1	2.9	2.1	1.8	1.4	1.1	0.92

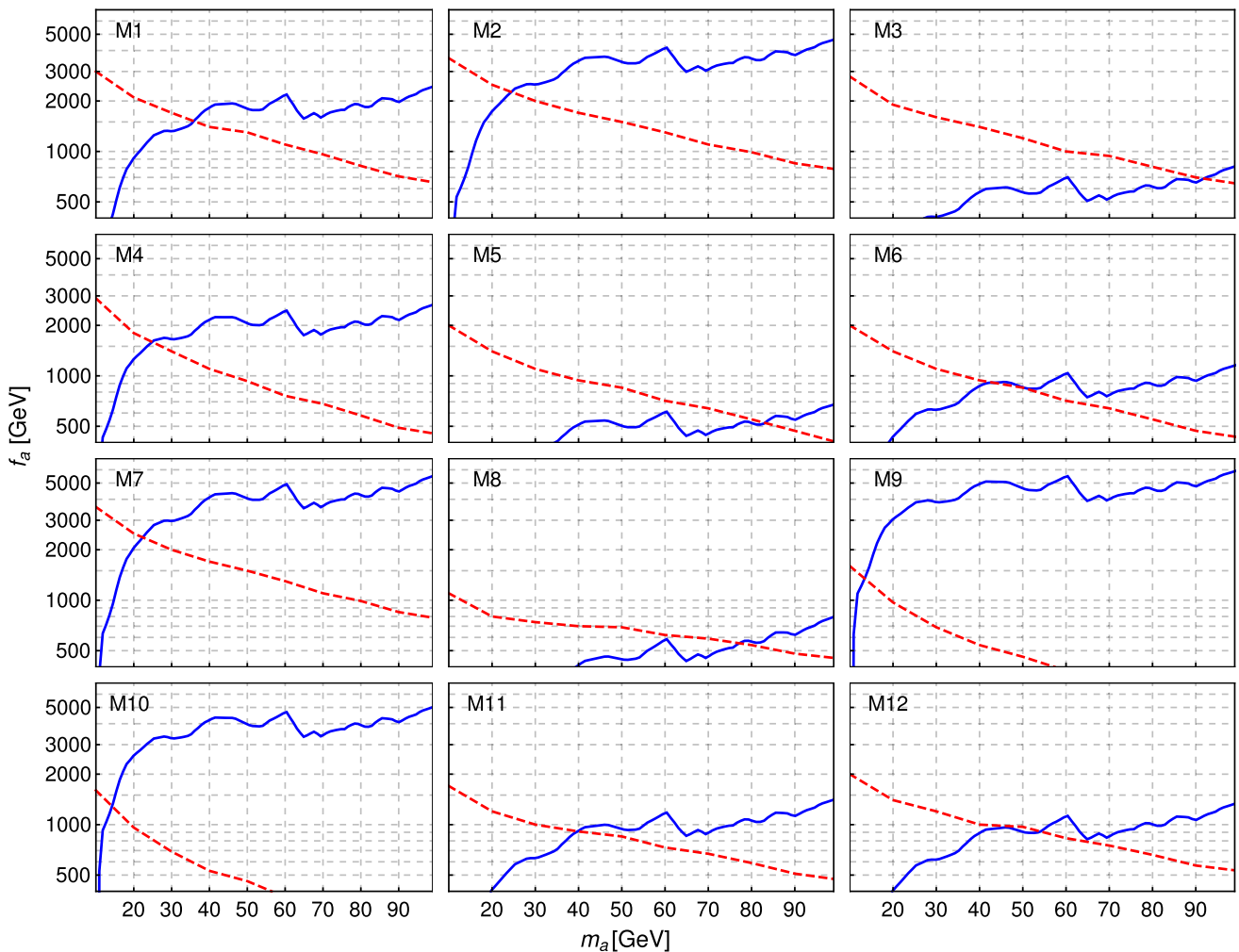


Fig. 8 Projected bounds on f_a from a boosted di-tau search with $\sqrt{s} = 13$ TeV after an integrated Luminosity of 300 fb^{-1} (red dashed, from Fig. 2) and from a boosted di-photon search with $\sqrt{s} = 14$ TeV after an integrated Luminosity of 300 fb^{-1} (blue solid, projections following Ref. [10])

between leptons and jets $\Delta R_{lj} > 0.5$. Furthermore, we put a third lepton veto and a b -jet veto in order to reduce the top and di-boson background.

The separation between the electron and the muon requires a more detailed discussion. Figure 4 shows the $\Delta R_{e\mu}$ distribution of the signal (for two reference masses) and the main backgrounds before imposing $\Delta R_{e\mu}$ cuts. The background distributions of di-tops and di-bosons are rather flat while the signal – especially for light TCPs – is characterized by small $\Delta R_{e\mu}$. Thus, the sensitivity of the search is increased by imposing an *upper* cut which we choose at $\Delta R_{e\mu} < 1.0$.

In current searches, the ATLAS and CMS collaborations typically also use a *lower* cut of $\Delta R_{e\mu} > 0.1$ or 0.2 as lepton isolation requirement. For these values, efficiencies and systematic errors are known and determined from data driven methods. Imposing an analogous isolation cut thus gives a reliable estimate of systematics and the reach of the study, but it comes at a price because for a light TCP, the signal efficiency is reduced. To study the impact of lepton isolation in more detail we explore three cases: without μ - e isolation, with $\Delta R_{e\mu} > 0.1$, and 0.2 . The resulting values for $\sigma_{\text{prod.}} \times \text{BR}_{\tau\tau} \times \epsilon$ for the case of no isolation are given in Table 2. The analogous values with an isolation criterion $\Delta R_{e\mu} > 0.1$ and 0.2 are shown in Tables 6 and 7, respectively.

The background cross sections are barely affected by the modified isolation cuts. They are given in the caption of the respective table. The signal cross sections for the different isolations are comparable for a high mass TCP, but get reduced for $m_a \lesssim 20$ GeV (30 GeV) for $\Delta R_{e\mu} > 0.1$ (0.2). Thus removing or at least reducing the isolation cut is advantageous for the TCP low mass regime if systematic errors can be kept under control.

Additionally, one could consider other channels such as (τ_h, μ) and (τ_h, e) . Perhaps even the (μ, μ) channel could be relevant in spite of the large Z/γ^* background. We refrain from doing this since the systematic error and the backgrounds become harder to estimate with our tools.

C Complementarity of $\tau\tau$ and $\gamma\gamma$ searches

To conclude, we show in Fig. 8 a comparison of the reach of the di-photon analysis proposed in [10] to the di-tau search proposed in this paper. We see that there is a nice complementarity between the two approaches, the di-tau being more sensitive in the low mass region and the di-photon nicely covering the high mass regions left uncovered. The complementarity also extends to the models themselves, namely some models, like M5 and M8, are much more sensitive to the di-tau signal, while others like M9 and M10 are covered by the di-photon analysis. A combination of the two approaches would essentially allow to test all of these models in the full mass range.

References

1. ATLAS Collaboration, G. Aad et al., Observation of a new particle in the search for the Standard Model Higgs boson with the ATLAS detector at the LHC, Phys. Lett. **B716** (2012) 1–29, [arXiv:1207.7214](#)
2. C.M.S. Collaboration, S. Chatrchyan et al., Observation of a new boson at a mass of 125 GeV with the CMS experiment at the LHC. Phys. Lett. B **716**, 30–61 (2012), [arXiv:1207.7235](#)
3. ATLAS Collaboration, G. Aad et al., Search for Scalar Diphoton Resonances in the Mass Range 65 – 600 GeV with the ATLAS Detector in pp Collision Data at $\sqrt{s} = 8$ TeV, Phys. Rev. Lett. **113** (2014), no. 17 171801, [arXiv:1407.6583](#)
4. CMS Collaboration, Search for new resonances in the diphoton final state in the mass range between 70 and 110 GeV in pp collisions at $\sqrt{s} = 8$ and 13 TeV, Tech. Rep. CMS-PAS-HIG-17-013, CERN, Geneva, 2017
5. G. Cacciapaglia, A. Deandrea, S. Gascon-Shotkin, S. Le Corre, M. Lethuillier, J. Tao, Search for a lighter Higgs boson in two higgs doublet models. JHEP **12**, 068 (2016). [arXiv:1607.0865](#)
6. U. Ellwanger, M. Rodriguez-Vazquez, Discovery prospects of a light scalar in the NMSSM. JHEP **02**, 096 (2016). [arXiv:1512.0428](#)
7. I. Brivio, M.B. Gavela, L. Merlo, K. Mimasa, J. M. No, R. del Rey, V. Sanz, ALPs Effective field theory and collider signatures [arXiv:1701.0537](#)
8. B. Bellazzini, A. Mariotti, D. Redigolo, F. Sala, J. Serra, R-axion at colliders, [arXiv:1702.0215](#)
9. M. Bauer, M. Neubert, A. Thamm, Collider probes of axion-like particles, [arXiv:1708.0044](#)
10. A. Mariotti, D. Redigolo, F. Sala, K. Tobioka, New LHC bound on low-mass diphoton resonances, [arXiv:1710.0174](#)
11. J. Barnard, T. Gherghetta, T.S. Ray, UV descriptions of composite Higgs models without elementary scalars. JHEP **02**, 002 (2014). [arXiv:1311.6562](#)
12. G. Ferretti, D. Karateev, Fermionic UV completions of composite Higgs models. JHEP **03**, 077 (2014). [arXiv:1312.5330](#)
13. G. Ferretti, Gauge theories of partial compositeness: scenarios for run-II of the LHC. JHEP **06**, 107 (2016). [arXiv:1604.0646](#)
14. T. DeGrand, M. Golterman, E.T. Neil, Y. Shamir, One-loop Chiral Perturbation Theory with two fermion representations. Phys. Rev. **D94**, 025020 (2016). [arXiv:1605.0773](#)
15. A. Belyaev, G. Cacciapaglia, H. Cai, G. Ferretti, T. Flacke, A. Parolini, H. Serodio, Di-boson signatures as standard candles for partial compositeness. JHEP **01**, 094 (2017). [arXiv:1610.0659](#)
16. V. Ayyar, T. DeGrand, M. Golterman, D. C. Hackett, W. I. Jay, E. T. Neil, Y. Shamir, B. Svetitsky, Spectroscopy of SU(4) composite Higgs theory with two distinct fermion representations, [arXiv:1710.0080](#)
17. G. Ferretti, UV completions of partial compositeness: the case for a SU(4) gauge group. JHEP **06**, 142 (2014). [arXiv:1404.7137](#)
18. CMS Collaboration, Search for a neutral MSSM Higgs boson decaying into tautau at 13 TeV, Tech. Rep. CMS-PAS-HIG-16-006, CERN, Geneva, (2016)
19. CMS Collaboration, Search for a neutral MSSM Higgs boson decaying into $\tau\tau$ with 12.9 fb⁻¹ of data at $\sqrt{s} = 13$ TeV, Tech. Rep. CMS-PAS-HIG-16-037, CERN, Geneva, (2016)
20. J.E. Kim, A COMPOSITE INVISIBLE AXION. Phys. Rev. D **31**, 1733 (1985)
21. M. Bauer, M. Neubert, A. Thamm, Analyzing the CP nature of a new scalar particle via $S \rightarrow Zh$ decay. Phys. Rev. Lett. **117**, 181801 (2016). [[arXiv:1610.0000](#)]
22. ATLAS Collaboration, A search for light CP-odd Higgs Bosons decaying to $\mu^+ \mu^-$ in ATLAS, Tech. Rep. ATLAS-CONF-2011-020, (2011)

23. CMS Collaboration, S. Chatrchyan, Search for a light pseudoscalar Higgs boson in the dimuon decay channel in pp collisions at $\sqrt{s} = 7$ TeV. *Phys. Rev. Lett.* **109**, 121801 (2012). [arXiv:1206.6326](#)
24. ATLAS, CMS Collaboration, G. Aad et al., Measurements of the Higgs boson production and decay rates and constraints on its couplings from a combined ATLAS and CMS analysis of the LHC pp collision data at $\sqrt{s} = 7$ and 8 TeV. *JHEP* **08**, 045 (2016) [arXiv:1606.0226](#)
25. NNPDF Collaboration, R. D. Ball, V. Bertone, S. Carrazza, L. Del Debbio, S. Forte, A. Guffanti, N. P. Hartland, J. Rojo, *Parton distributions with QED corrections*, *Nucl. Phys.* **B877**, 290–320 (2013) [arXiv:1308.0598](#)
26. T. Ahmed, M. Bonvini, M.C. Kumar, P. Mathews, N. Rana, V. Ravindran, Pseudo-scalar Higgs boson production at N^3 LO_A + N^3 LL'. *Eur. Phys. J.* **C76**, 663 (2016). [arXiv:1606.0083](#)
27. CMS Collaboration, Search for low mass vector resonances decaying into quark-antiquark pairs in proton-proton collisions at $\sqrt{s} = 13$ TeV, Tech. Rep. CMS-EXO-17-001-003, CERN, Geneva, Sep, (2017)
28. S. Knapen, T. Lin, H. K. Lou, T. Melia, Searching for axionlike particles with ultraperipheral heavy-ion collisions. *Phys. Rev. Lett.* **118**(17), 171801 (2017). [arXiv:1607.0608](#)
29. ATLAS Collaboration, Projections for measurements of Higgs boson signal strengths and coupling parameters with the ATLAS detector at a HL-LHC, Tech. Rep. ATL-PHYS-PUB-2014-016, CERN, Geneva, Oct, (2014)
30. M. Casolino, T. Farooque, A. Juste, T. Liu, M. Spannowsky, Probing a light CP-odd scalar in di-top-associated production at the LHC. *Eur. Phys. J. C* **75**, 498 (2015). [arXiv:1507.0700](#)
31. J. Kozaczuk, T.A.W. Martin, Extending LHC coverage to light pseudoscalar mediators and coy dark sectors. *JHEP* **04**, 046 (2015). [arXiv:1501.0727](#)
32. W.J. Marciano, A. Masiero, P. Paradisi, M. Passera, Contributions of axionlike particles to lepton dipole moments. *Phys. Rev. D* **94**(11), 115033 (2016). [arXiv:1607.0102](#)
33. M. Bauer, M. Neubert, A. Thamm, LHC as an axion factory: probing an axion explanation for $(g - 2)_\mu$ with exotic Higgs decays. [arXiv:1704.0820](#)
34. LHCb Collaboration, R. Aaij et al., Search for dark photons produced in 13 TeV pp collisions, [arXiv:1710.0286](#)
35. A. Chakraborty, A. M. Iyer, T. S. Roy, A universal framework for finding anomalous objects at the LHC, [arXiv:1707.0708](#)
36. D. Goncalves, D. Lopez-Val, Pseudoscalar searches with dileptonic tops and jet substructure. *Phys. Rev.* **D94**(9), 095005 (2016). [arXiv:1607.0861](#)
37. CMS Collaboration, Search for heavy resonances decaying into two Higgs bosons or into a Higgs and a vector boson in proton-proton collisions at 13 TeV, Tech. Rep. CMS-PAS-B2G-17-006, CERN, Geneva, (2017)
38. J. Alwall, R. Frederix, S. Frixione, V. Hirschi, F. Maltoni, O. Mattelaer, H.S. Shao, T. Stelzer, P. Torrielli, M. Zaro, The automated computation of tree-level and next-to-leading order differential cross sections, and their matching to parton shower simulations. *JHEP* **07**, 079 (2014). [arXiv:1405.0301](#)
39. I. Sjöstrand, S. Mrenna, P.Z. Skands, A brief introduction to PYTHIA 8.1. *Comput. Phys. Commun.* **178**, 852–867 (2008). [arXiv:0710.3820](#). *Inspire*
40. J. de Favereau, C. Delaere, P. Demin, A. Giammanco, V. Lemaitre, A. Mertens, M. Selvaggi, DELPHES 3, A modular framework for fast simulation of a generic collider experiment. *JHEP* **02**, 057 (2014). [arXiv:1307.6346](#). *Inspire*
41. CMS Collaboration, V. Khachatryan, Search for narrow high-mass resonances in proton-proton collisions at $\sqrt{s} = 8$ TeV decaying to a Z and a Higgs boson. *Phys. Lett. B* **748**, 255–277 (2015). [arXiv:1502.0499](#)
42. G. Cowan, K. Cranmer, E. Gross, O. Vitells, Asymptotic formulae for likelihood-based tests of new physics. *Eur. Phys. J. C* **71**, 1554 (2011). [arXiv:1007.1727](#). (**Erratum: Eur. Phys. J. C** **73**, 2501 (2013))
43. K. Rehermann, B. Tweedie, Efficient identification of boosted semileptonic top quarks at the LHC. *JHEP* **03**, 059 (2011). [arXiv:1007.2221](#)
44. A. Katz, M. Son, B. Tweedie, Ditau-jet tagging and Boosted Higgses from a multi-TeV resonance. *Phys. Rev. D* **83**, 114033 (2011). [arXiv:1011.4523](#)
45. E. Conte, B. Fuks, J. Guo, J. Li, A.G. Williams, Investigating light NMSSM pseudoscalar states with boosted ditau tagging. *JHEP* **05**, 100 (2016). [arXiv:1604.0539](#)
46. ATLAS Collaboration, Trigger Menu in 2016, Tech. Rep. ATL-DAQ-PUB-2017-001, (2017)