



A method for identifying aggressive driving by using naturalistic driving data

Downloaded from: <https://research.chalmers.se>, 2026-04-05 04:54 UTC

Citation for the original published paper (version of record):

Kovaceva, J., Isaksson-Hellman, I. (2018). A method for identifying aggressive driving by using naturalistic driving data. 7th International Symposium on Naturalistic Driving Research

N.B. When citing this work, cite the original published paper.

research.chalmers.se offers the possibility of retrieving research publications produced at Chalmers University of Technology. It covers all kind of research output: articles, dissertations, conference papers, reports etc. since 2004. research.chalmers.se is administrated and maintained by Chalmers Library

(article starts on next page)

A method for identifying aggressive driving by using naturalistic driving data

**Jordanka Kovaceva, Chalmers University Of Technology, Sweden
Irene Isaksson Hellman, If P&C Insurance, Sweden**

7th International Symposium on Naturalistic Driving Research, Blacksburg, USA, 28-29 August 2018

Agenda

- Aim
- Data
- Method
- Results
- Conclusions

Aim

- Identify metrics that can categorize driver behavior associated with higher crash risk
- Aggressive driving in car-following situations
- Investigate effects of drivers characteristics on the identified metrics

UDRIVE

NUMBER OF DRIVERS PER COUNTRY:

EUROPEAN NATURALISTIC
DRIVING STUDY



87871 HOURS OF
DATA COLLECTED

VEHICLE
TYPES



NUMBER OF DRIVERS:

48

186

47

HOURS OF DATA COLLECTED
PER VEHICLE:

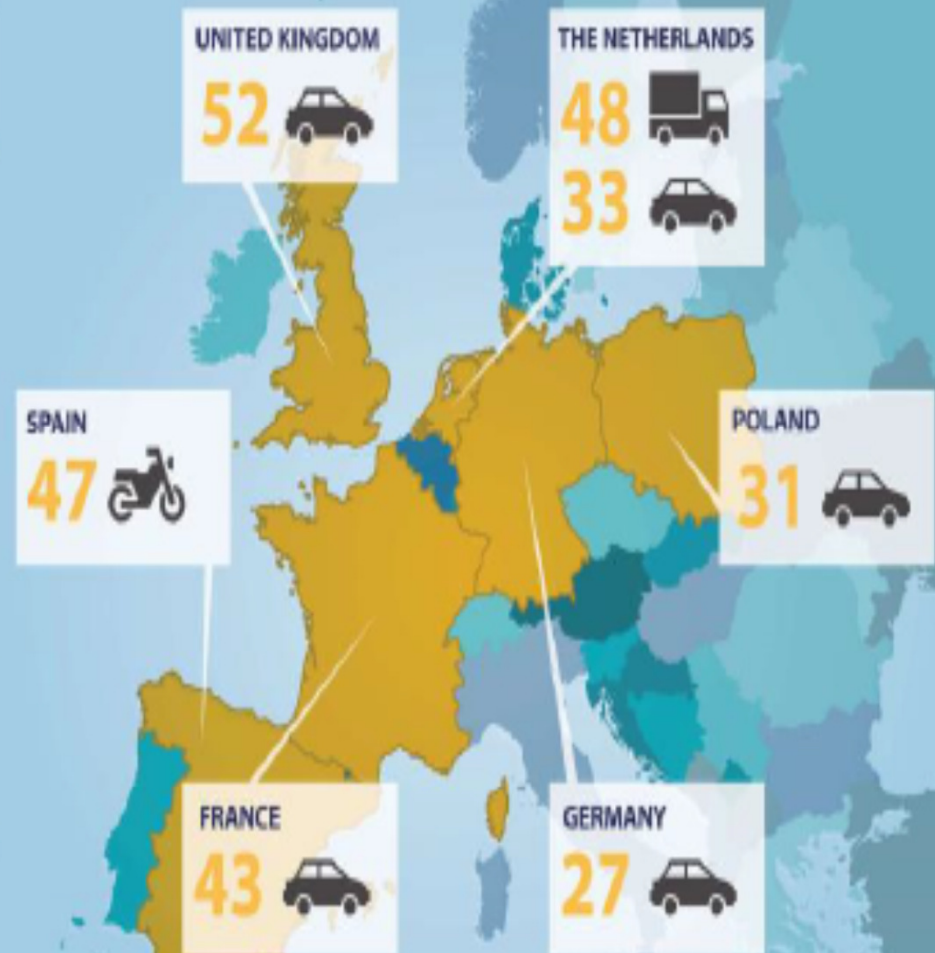
41389

45591

891



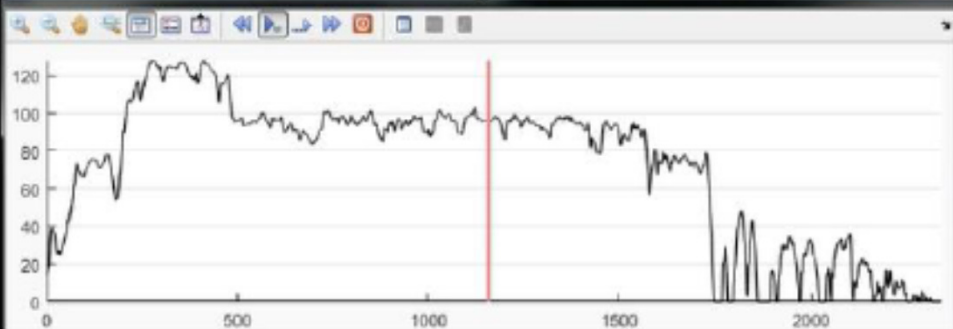
NUMBER
OF DRIVERS
281





UDRIVE

European Naturalistic
Driving Study



UDRIVE demonstration
video, non-participant
with consent

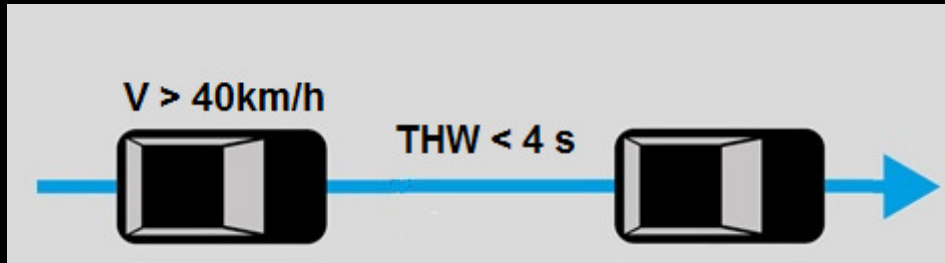
CDC data extraction
on 2017-06-20

Questionnaires' data



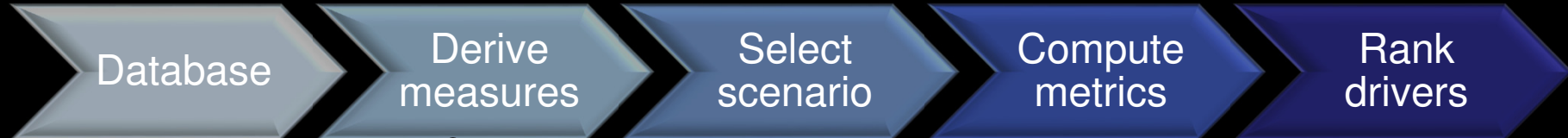
- Driver Behaviour Questionnaires' (DBQ)
 - 19 items assessing the prevalence of errors and violations in the driver's everyday behaviors
 - High score = more reported aggressive driving violations
- Arnett Inventory of Sensation Seeking (AISS)
 - 20 items assessing the risk-taking and sensation-seeking nature of a driver's personality
 - High score = drivers seek out highly novel or high intensity experiences

-Vehicle sensor (V, a)
-Mobile eye (range)
-Map data (road type)



-Motorway
-No CC

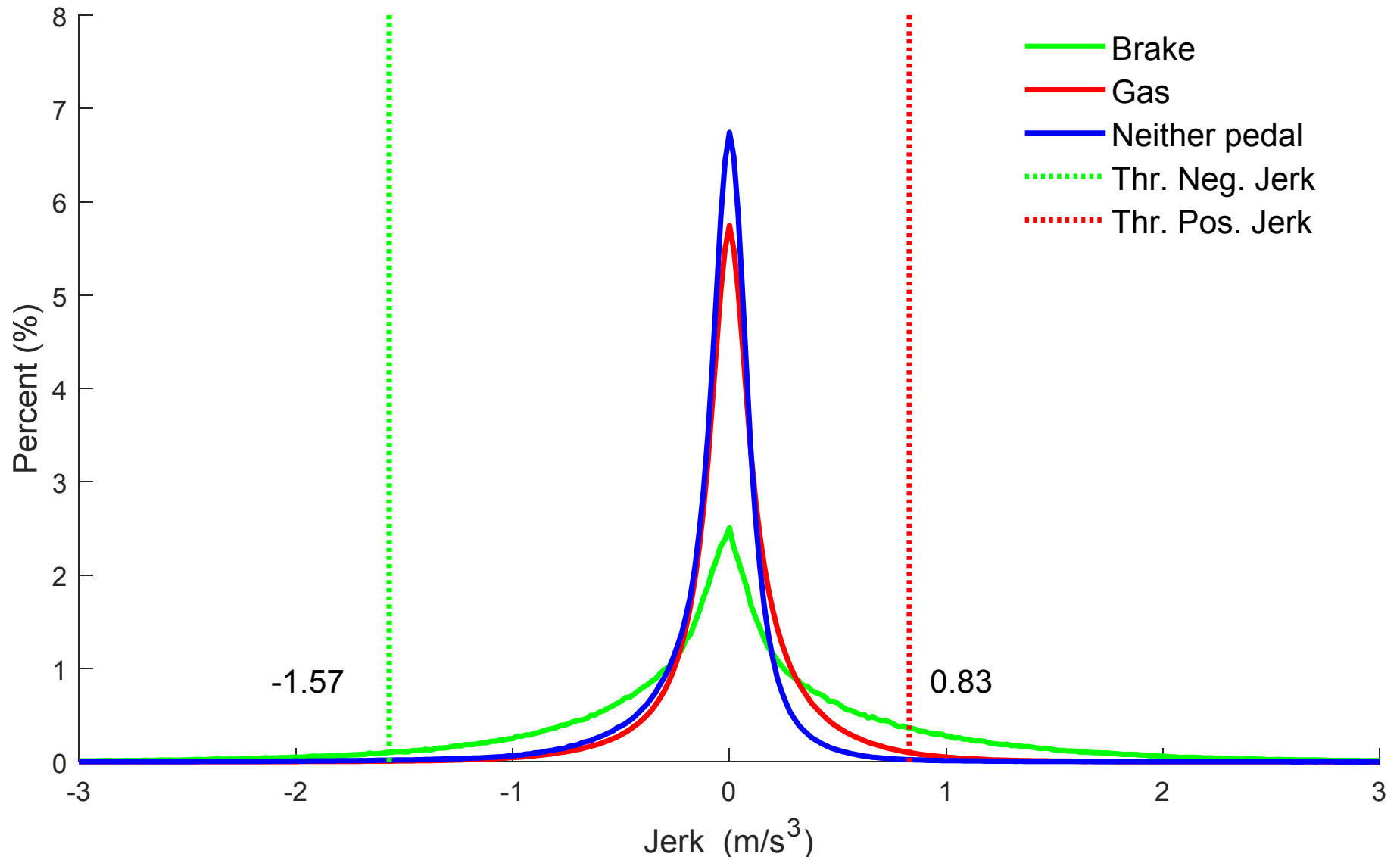
Top 25%



-Longitudinal jerk
-THW

$$\% \text{ tailgating} = \frac{THW < 0.4s}{THW < 4s} * 100$$

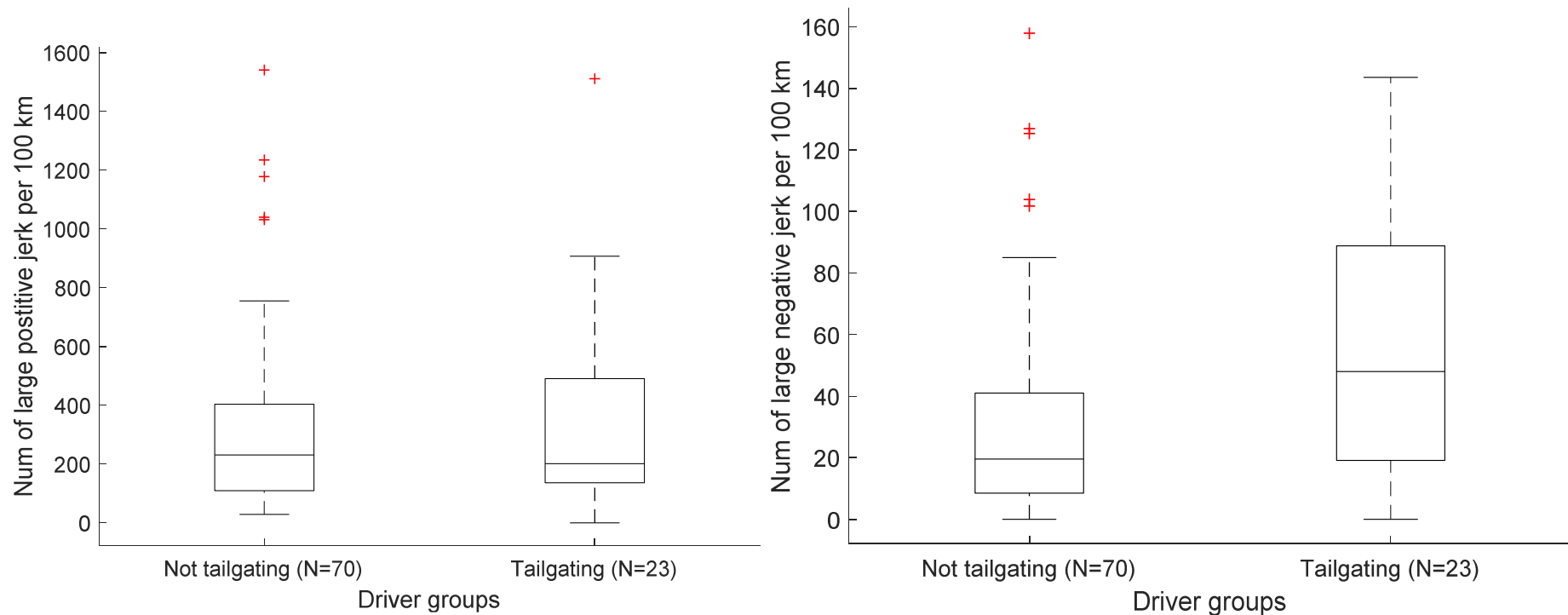
negative jerk
positive jerk



Results

- Total segments of car-following: 126098
- Distance: 72705 km
- Duration: 758.2 hours
- 93 drivers
 - 50 males and 43 females

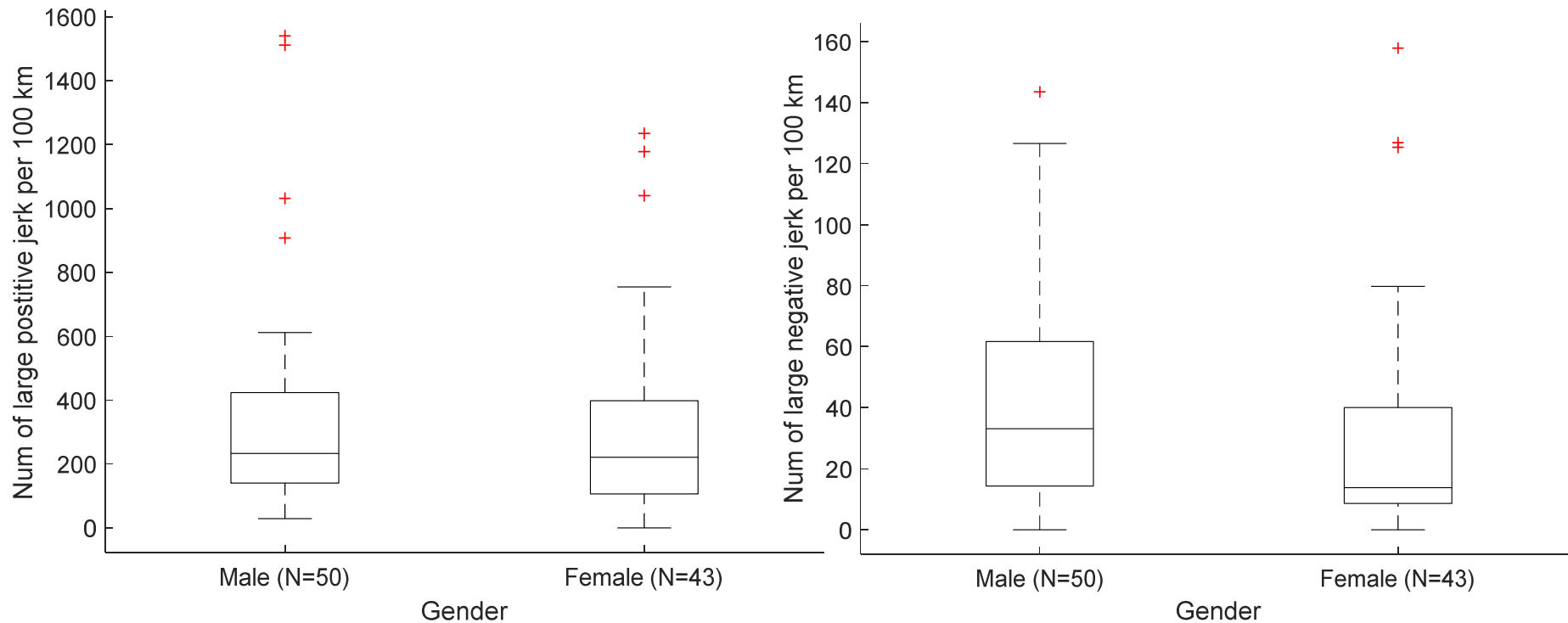
Jerk and tailgating



K-W: $\chi^2 (1) = 0.1605, p = 0.6886$

$\chi^2 (1) = 8.3764, p = 0.0038$

Jerk and gender



K-W: $\chi^2 (1) = 0.8128, p = 0.3673$

$\chi^2 (1) = 6.0431, p = 0.0139$

Jerk and country

- Positive jerk

$$\text{K-W } \chi^2 (4) = 20 \text{ p} = \mathbf{0.00049}$$

- Negative jerk

$$\text{K-W } \chi^2 (4) = 19.51 \text{ p} = \mathbf{0.00062}$$

AISS

- Low AISS group (AISS ≤ 45)
- High AISS group (AISS > 45)

- Tailgate:
 - Fisher exact **p = 0.0139**
- Positive jerk:
 - K-W: $\chi^2(1) = 0.2435$, p = 0.6216
- Negative jerk:
 - K-W: $\chi^2(1) = 1.5286$, p = 0.2163

DBQ

- Low DBQ group (1-3)
- High DBQ group (4-5)

- Tailgate:
 - Fisher exact $p = 0.8604$
- Positive jerk:
 - K-W: $\chi^2 (1) = 2.8062$, $p = 0.0939$
- Negative jerk:
 - K-W: $\chi^2 (1) = 1.6015$, $p = 0.2057$

Conclusion

- Aggressive drivers are associated with significantly higher frequency of using large **negative** jerk
- Drivers from different countries have significantly different frequency in using both **positive** and **negative** jerk
- Male drivers have significantly higher frequency of using large **negative** jerk compared to female drivers
- Higher sensation-seeking drivers are more prone to tailgating

Thank you